
Digital Still Camera / Instruction Manual

GB

數位照相機 / 使用說明書

CT

If the product number of your camera is within the range below, refer to the following URL.

0010001 - 3000000

9000001 - 9330000

<http://helpguide.sony.net/dsc/rx100/d032100811.pdf>

Cyber-shot



LITHIUM ION **X**
TYPE



AVCHD
Progressive

HDMI
HIGH-DEFINITION MULTIMEDIA INTERFACE

Learning more about the camera (“Cyber-shot User Guide”)



“Cyber-shot User Guide” is an on-line manual. Refer to it for in-depth instructions on the many functions of the camera.

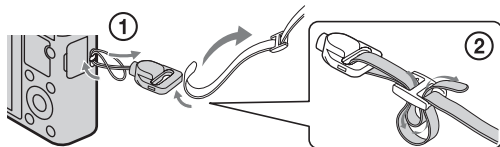
- ① Access the Sony support page.
<http://www.sony.net/SonyInfo/Support/>
- ② Select your country or region.
- ③ Search for the model name of your camera within the support page.
 - Check the model name on the bottom of your camera.

Checking the supplied items

The number in parentheses indicates the number of pieces.

- Camera (1)
- Rechargeable battery pack NP-BX1 (1)
- Micro USB cable (1)
- AC Adaptor AC-UD10/UD11 (1)
- Power cord (mains lead) (not supplied in the USA and Canada) (1)
- Wrist strap (1)
- Strap adapter (2)

(Strap adapters are used to attach the shoulder strap (sold separately), as illustrated.)



- Instruction Manual (this manual) (1)

Owner's Record

The model and serial numbers are located on the bottom. Record the serial number in the space provided below. Refer to these numbers whenever you call your Sony dealer regarding this product.

Model No. DSC-RX100

Serial No. _____

Model No. AC-UD10/AC-UD11

Serial No. _____

GB

WARNING

To reduce fire or shock hazard, do not expose the unit to rain or moisture.

IMPORTANT SAFETY INSTRUCTIONS -SAVE THESE INSTRUCTIONS

DANGER

TO REDUCE THE RISK OF FIRE OR ELECTRIC SHOCK, CAREFULLY FOLLOW THESE INSTRUCTIONS

If the shape of the plug does not fit the power outlet, use an attachment plug adaptor of the proper configuration for the power outlet.

CAUTION

Battery pack

If the battery pack is mishandled, the battery pack can burst, cause a fire or even chemical burns. Observe the following cautions.

- Do not disassemble.
- Do not crush and do not expose the battery pack to any shock or force such as hammering, dropping or stepping on it.
- Do not short circuit and do not allow metal objects to come into contact with the battery terminals.
- Do not expose to high temperature above 60°C (140°F) such as in direct sunlight or in a car parked in the sun.
- Do not incinerate or dispose of in fire.
- Do not handle damaged or leaking lithium ion batteries.

- Be sure to charge the battery pack using a genuine Sony battery charger or a device that can charge the battery pack.
- Keep the battery pack out of the reach of small children.
- Keep the battery pack dry.
- Replace only with the same or equivalent type recommended by Sony.
- Dispose of used battery packs promptly as described in the instructions.

AC Adaptor

Connect the AC Adaptor to the nearest wall outlet (wall socket).

If some trouble occurs while using the AC Adaptor, immediately shut off the power by disconnecting the plug from the wall outlet (wall socket).

The power cord (mains lead), if supplied, is designed specifically for use with this camera only, and should not be used with other electrical equipment.

For Customers in the U.S.A. and Canada

RECYCLING LITHIUM-ION BATTERIES

Lithium-Ion batteries are recyclable.

You can help preserve our environment by returning your used rechargeable batteries to the collection and recycling location nearest you.



For more information regarding recycling of rechargeable batteries, call toll free

1-800-822-8837, or visit <http://www.rbrclion.org/>

Caution: Do not handle damaged or leaking Lithium-Ion batteries.

Battery pack

This device complies with Part 15 of the FCC Rules. Operation is subject to the following two conditions:

(1) This device may not cause harmful interference, and (2) this device must accept any interference received, including interference that may cause undesired operation.

This Class B digital apparatus complies with Canadian ICES-003.

For Customers in the U.S.A.

UL is an internationally recognized safety organization.
The UL Mark on the product means it has been UL Listed.

If you have any questions about this product, you may call:

Sony Customer Information Center
1-800-222-SONY (7669).

The number below is for the FCC related matters only.

GB

Regulatory Information

Declaration of Conformity

Trade Name: SONY
Model No.: DSC-RX100
Responsible Party: Sony Electronics Inc.
Address: 16530 Via Esprillo,
San Diego, CA 92127 U.S.A.
Telephone No.: 858-942-2230

This device complies with Part 15 of the FCC Rules. Operation is subject to the following two conditions: (1) This device may not cause harmful interference, and (2) this device must accept any interference received, including interference that may cause undesired operation.

CAUTION

You are cautioned that any changes or modifications not expressly approved in this manual could void your authority to operate this equipment.

Note:

This equipment has been tested and found to comply with the limits for a Class B digital device, pursuant to Part 15 of the FCC Rules.

These limits are designed to provide reasonable protection against harmful interference in a residential installation. This equipment generates, uses, and can radiate radio frequency energy and, if not installed and used in accordance with the instructions, may cause harmful interference to radio communications. However, there is no guarantee that interference will not occur in a particular installation. If this equipment does cause harmful interference to radio or television reception, which can be determined by turning the equipment off and on, the user is encouraged to try to correct the interference by one or more of the following measures:

- Reorient or relocate the receiving antenna.
- Increase the separation between the equipment and receiver.
- Connect the equipment into an outlet on a circuit different from that to which the receiver is connected.
- Consult the dealer or an experienced radio/TV technician for help.

The supplied interface cable must be used with the equipment in order to comply with the limits for a digital device pursuant to Subpart B of Part 15 of FCC Rules.

GB
5

For Customers in Europe

Notice for the customers in the countries applying EU Directives

The manufacturer of this product is Sony Corporation, 1-7-1 Konan Minato-ku Tokyo, 108-0075 Japan. The Authorized Representative for EMC and product safety is Sony Deutschland GmbH, Hedelfinger Strasse 61, 70327 Stuttgart, Germany. For any service or guarantee matters please refer to the addresses given in separate service or guarantee documents.

This product has been tested and found compliant with the limits set out in the EMC Directive for using connection cables shorter than 3 meters (9.8 feet).

Attention

The electromagnetic fields at the specific frequencies may influence the picture and sound of this unit.

Notice

If static electricity or electromagnetism causes data transfer to discontinue midway (fail), restart the application or disconnect and connect the communication cable (USB, etc.) again.

Disposal of Old Electrical & Electronic Equipment (Applicable in the European Union and other European countries with separate collection systems)



This symbol on the product or on its packaging indicates that this product shall not be treated as household waste. Instead it shall be handed over to the applicable collection point for the recycling of electrical and electronic equipment. By ensuring this product is disposed of correctly, you will help prevent potential negative consequences for the environment and human health, which could otherwise be caused by inappropriate waste handling of this product. The recycling of materials will help to conserve natural resources. For more detailed information about recycling of this product,

please contact your local Civic Office, your household waste disposal service or the shop where you purchased the product.

Disposal of waste batteries (applicable in the European Union and other European countries with separate collection systems)



This symbol on the battery or on the packaging indicates that the battery provided with this product shall not be treated as household waste.

On certain batteries this symbol might be used in combination with a chemical symbol. The chemical symbols for mercury (Hg) or lead (Pb) are added if the battery contains more than 0.0005% mercury or 0.004% lead.

By ensuring these batteries are disposed of correctly, you will help prevent potentially negative consequences for the environment and human health which could otherwise be caused by inappropriate waste handling of the battery. The recycling of the materials will help to conserve natural resources.

In case of products that for safety, performance or data integrity reasons require a permanent connection with an incorporated battery, this battery should be replaced by qualified service staff only. To ensure that the battery will be treated properly, hand over the product at end-of-life to the applicable collection point for the recycling of electrical and electronic equipment.



For all other batteries, please view the section on how to remove the battery from the product safely.

Hand the battery over to the applicable collection point for the recycling of waste batteries. For more detailed information about recycling of this product or battery, please contact your local Civic Office, your household waste disposal service or the shop where you purchased the product.

GB

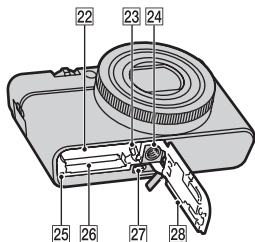
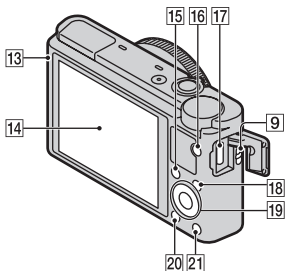
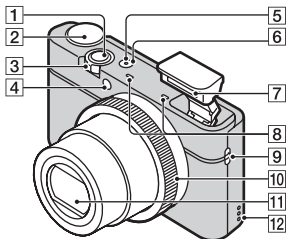
Notice for customers in the United Kingdom

A moulded plug complying with BS 1363 is fitted to this equipment for your safety and convenience.



Should the fuse in the plug supplied need to be replaced, a fuse of the same rating as the supplied one and approved by ASTA or BSI to BS 1362, (i.e., marked with an  or  mark) must be used.

If the plug supplied with this equipment has a detachable fuse cover, be sure to attach the fuse cover after you change the fuse. Never use the plug without the fuse cover. If you should lose the fuse cover, please contact your nearest Sony service station.

Identifying parts



- 1 Shutter button
- 2 Mode dial
iA (Intelligent Auto)/
iA+ (Superior Auto)/
P (Program Auto)/
A (Aperture Priority)/
S (Shutter Priority)/
M (Manual Exposure)/
MR (Memory recall)/
MOVIE (Movie)/**SWEEP** (Sweep Shooting)/**SCN** (Scene Selection)
- 3 For shooting: W/T (zoom) lever
 For viewing: Index/Playback zoom lever
- 4 Self-timer lamp/Smile Shutter lamp/AF illuminator
- 5 Power/Charge lamp
- 6 ON/OFF (Power) button
- 7 Flash
 - Do not cover the flash with your fingers.
 - When using the flash, the flash pops up automatically. If not using the flash, press it down manually.
- 8 Microphone
- 9 Hook for strap
- 10 Control Ring
- 11 Lens
- 12 Speaker
- 13 Light sensor
- 14 LCD screen
- 15 Fn (Function) button
- 16 MOVIE (Movie) button
- 17 Micro USB connector
- 18 MENU button
- 19 Control wheel

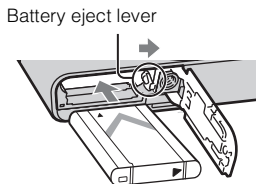
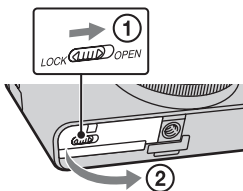
- 20  (Playback) button
- 21  (In-Camera Guide/Delete) button
- 22 Battery insertion slot
- 23 Battery eject lever
- 24 Tripod socket hole

- Use a tripod with a screw less than 5.5 mm (7/32 inches) long. Otherwise, you cannot firmly secure the camera, and damage to the camera may occur.

- 25 Access lamp
- 26 Memory card slot
- 27 HDMI micro jack
- 28 Battery/Memory card cover

GB

Inserting the battery pack

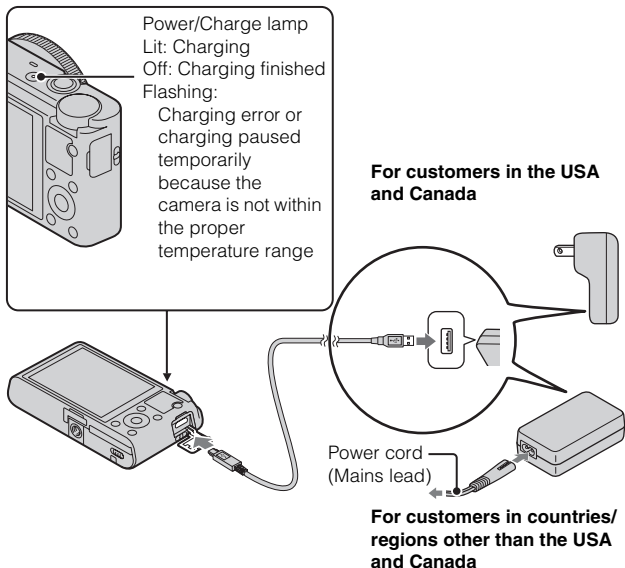


1 Open the cover.

2 Insert the battery pack.

- While pressing the battery eject lever, insert the battery pack as illustrated. Make sure that the battery eject lever locks after insertion.
- Closing the cover with the battery inserted incorrectly may damage the camera.

Charging the battery pack



- 1 Connect the camera to the AC Adaptor (supplied), using the micro USB cable (supplied).
- 2 Connect the AC Adaptor to the wall outlet (wall socket). The Power/Charge lamp lights orange, and charging starts.
 - Turn off the camera while charging the battery.
 - You can charge the battery pack even when it is partially charged.
 - When the Power/Charge lamp flashes and charging is not finished, remove and re-insert the battery pack.

Notes

- If the Power/Charge lamp on the camera flashes when the AC Adaptor is connected to the wall outlet (wall socket), this indicates that charging is temporarily stopped because the temperature is outside the recommended range. When the temperature gets back within the appropriate range, the charging resumes. We recommend charging the battery pack in an ambient temperature of between 10°C to 30°C (50°F to 86°F).
- The battery pack may not be effectively charged if the terminal section of the battery is dirty. In this case, wipe any dust off lightly using a soft cloth or a cotton swab to clean the terminal section of the battery.
- Connect the AC Adaptor (supplied) to the nearest wall outlet (wall socket). If malfunctions occur while using the AC Adaptor, disconnect the plug from the wall outlet (wall socket) immediately to disconnect from the power source.
- When charging is finished, disconnect the AC Adaptor from the wall outlet (wall socket).
- Be sure to use only genuine Sony brand battery packs, micro USB cable (supplied) and AC Adaptor (supplied).

GB

■ Charging time (Full charge)

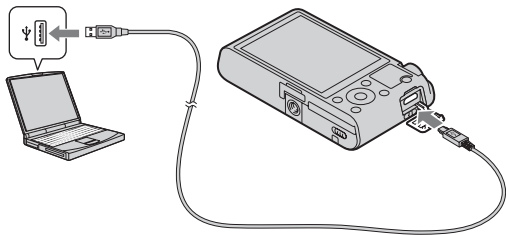
The charging time is approximately 155 min. using the AC Adaptor (supplied).

Notes

- The above charging time applies when charging a fully depleted battery pack at a temperature of 25°C (77°F). Charging may take longer depending on conditions of use and circumstances.

■ Charging by connecting to a computer

The battery pack can be charged by connecting the camera to a computer using a micro USB cable.



Notes

- Note the following points when charging via a computer:
 - If the camera is connected to a laptop computer that is not connected to a power source, the laptop battery level decreases. Do not charge for an extended period of time.
 - Do not turn on/off or restart the computer, or wake the computer to resume from sleep mode when a USB connection has been established between the computer and the camera. The camera may cause a malfunction. Before turning on/off, or restarting the computer or waking the computer from sleep mode, disconnect the camera and the computer.
 - No guarantees are made for charging using a custom-built computer or a modified computer.

Battery life and number of images that can be recorded and played back

	Battery life	Number of images
Shooting (still images)	Approx. 165 min.	Approx. 330 images
Viewing (still images)	Approx. 250 min.	Approx. 5000 images
Shooting (movies)	Approx. 80 min.	—

GB

Notes

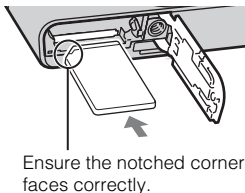
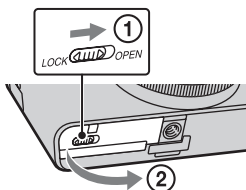
- The above number of images applies when the battery pack is fully charged. The number of images may decrease depending on the conditions of use.
- The number of images that can be recorded is for shooting under the following conditions:
 - Using Sony “Memory Stick PRO Duo” (Mark2) media (sold separately)
 - The battery pack is used at an ambient temperature of 25°C (77°F).
- The number for “Shooting (still images)” is based on the CIPA standard, and is for shooting under the following conditions:
(CIPA: Camera & Imaging Products Association)
 - DISP is set to [Display All Info.].
 - Shooting once every 30 seconds.
 - The zoom is switched alternately between the W and T ends.
 - The flash strobes once every two times.
 - The power turns on and off once every ten times.
- The battery life for movies applies shooting under the following conditions:
 - Record Setting: 60i 17M(FH)/50i 17M(FH)
 - When continuous shooting ends because of set limits (29 minutes), press the MOVIE (Movie) button again to continue shooting. Shooting functions such as zoom will not be available.

■ Supplying power

The camera can be supplied with power from the wall outlet (wall socket) by connecting to the AC Adaptor (supplied), using the micro USB cable (supplied). This way, there is no need to worry about draining the battery when shooting over extended periods or when the camera is connected to a TV or computer.

Shooting and playback are possible without a battery pack in the camera.

Inserting a memory card (sold separately)



1 Open the cover.

2 Insert the memory card (sold separately).

- With the notched corner facing as illustrated, insert the memory card until it clicks into place.

3 Close the cover.

■ Memory cards that can be used

	Memory card	For still images	For movies
A	Memory Stick PRO Duo	✓	✓ (Mark2 only)
	Memory Stick PRO-HG Duo	✓	✓
	Memory Stick Duo	✓	—
B	Memory Stick Micro (M2)	✓	✓ (Mark2 only)
C	SD memory card	✓	✓ (Class 4 or faster)
	SDHC memory card	✓	✓ (Class 4 or faster)
	SDXC memory card	✓	✓ (Class 4 or faster)
D	microSD memory card	✓	✓ (Class 4 or faster)
	microSDHC memory card	✓	✓ (Class 4 or faster)

GB

- In this manual, the products in the table are collectively referred to as follows:

- A:** “Memory Stick Duo” media
- B:** “Memory Stick Micro” media
- C:** SD card
- D:** microSD memory card

Notes

- When using “Memory Stick Micro” media or microSD memory cards with this camera, make sure to use with the appropriate adaptor.

■ To remove the memory card/battery pack

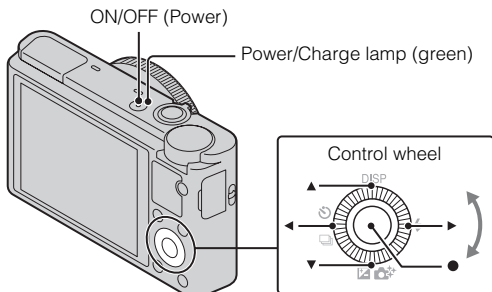
Memory card: Push the memory card in once to eject the memory card.

Battery pack: Slide the battery eject lever. Be sure not to drop the battery pack.

Notes

- Never remove the memory card/battery pack when the access lamp (page 8) is lit. This may cause damage to data in the memory card.

Setting the clock



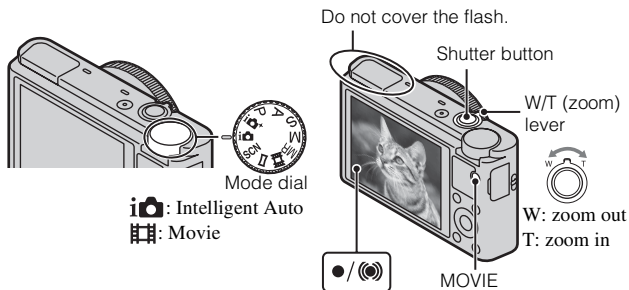
Select items: ◀/▶

Set the numeric value of date and time: ▲/▼/↶/↷

Set: ●

- 1** Press the ON/OFF (Power) button.
Date & Time setting is displayed when you turn on the camera for the first time.
 - It may take time for the power to turn on and allow operation.
- 2** Check that [Enter] is selected on the screen, then press ● on the control wheel.
- 3** Select a desired geographic location by following the on-screen instructions, then press ●.
- 4** Set [Daylight Svg.:], date and [Date Format:], then press ●.
 - Midnight is indicated as 12:00 AM, and noon as 12:00 PM.
- 5** Check that [Enter] is selected, then press ●.

Shooting still images/movies



GB

Shooting still images

- 1 Press the shutter button halfway down to focus.
When the image is in focus, a beep sounds and the ● or (●) indicator lights.
- 2 Press the shutter button fully down to shoot an image.

Shooting movies

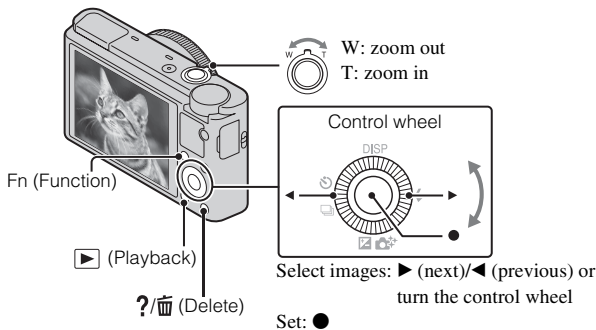
- 1 Press the MOVIE (Movie) button to start recording.
 - Use the W/T (zoom) lever to change the zoom scale.
 - Press the shutter button to shoot still images while continuing to record the movie.
- 2 Press the MOVIE button again to stop recording.

Notes

- Do not pull up the flash manually. This may cause a malfunction.
- When using the zoom function while shooting a movie, the sound of the camera operating will be recorded. The sound of the MOVIE button operating may also be recorded when movie recording is finished.
- Continuous shooting is possible for approximately 29 minutes at one time at the camera's default settings and when the temperature is approximately 25°C (77°F). When movie recording is finished, you can restart recording by pressing the MOVIE button again. Recording may stop to protect the camera depending on the ambient temperature.

GB
17

Viewing images



1 Press the ▶ (Playback) button.

- You can switch the display mode between still images and movies by selecting MENU → ▶ 1 → [Still/Movie Select].

■ Selecting next/previous image

Select an image by pressing ▶ (next)/◀ (previous) on the control wheel or by turning the control wheel. Press ● in the center of the control wheel to view movies.

■ Deleting an image

- ① Press ?/🗑️ (Delete) button.
- ② Select [Delete] with ▲ on the control wheel, then press ●.

■ Rotating an image

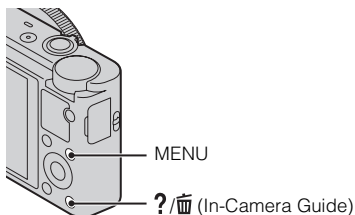
Press the Fn (Function) button.

■ Returning to shooting images

Press the shutter button halfway down.

Viewing the Guide

This camera is equipped with a built-in instruction guide.



GB

In-Camera Guide

The camera displays explanations for MENU items and the setting values.

- 1 Press the MENU button.
- 2 Select the desired MENU item, then press ?/In-Camera Guide button.

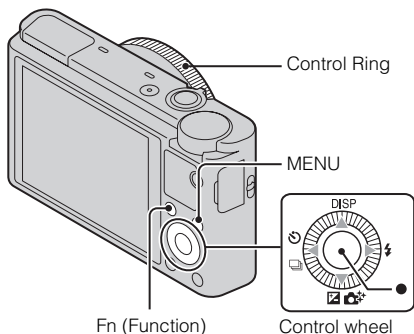
Shooting Tip

The camera displays shooting tips for the shooting mode selected.

- 1 Press ?/In-Camera Guide button in shooting mode.
- 2 Select the desired shooting tip, then press ● on the control wheel.
The shooting tip is displayed.
 - You can scroll the screen using ▲/▼ and change shooting tips using ◀/▶.

Introduction of other functions

Other functions can be operated using the control wheel, MENU button, etc.



■ Control wheel

DISP (Display Contents): Allows you to change the screen display.

⚡ (Flash Mode): Allows you to select a flash mode for still images.

📷/🌟 (Exposure Comp./Photo Creativity): Allows you to adjust image brightness. Allows you to change [Bkground Defocus], [Brightness], [Color], [Vividness] and [Picture Effect] when shooting mode is set to [Intelligent Auto] or [Superior Auto].

🕒/📷 (Drive Mode): Allows you to use the self-timer and burst shooting mode.

● (Tracking focus): The camera tracks the subject and adjusts focus automatically even when the subject is moving.

■ Fn (Function) button

Allows you to register seven functions and recall those functions when shooting.

- ① Press the Fn (Function) button.
- ② Select the desired function using the Fn (Function) button or ◀/▶ on the control wheel.
- ③ Select the setting value by turning the control wheel or Control Ring.

GB

■ Control Ring

Your favorite functions can be assigned to the Control Ring; when shooting, established settings can be changed just by turning the Control Ring.

■ Menu Items

📷 Still shooting menu

Image Size	Selects the size of still images.
Aspect Ratio	Selects the aspect ratio for still images.
Quality	Sets the image quality for still images.
Panorama: Size	Selects the size of panoramic images.
Panorama: Direction	Sets the shooting direction for panoramic images.
Drive Mode	Sets the drive mode, such as for continuous shooting.
Flash Mode	Sets the flash settings.
Focus Mode	Selects the focus method.
Autofocus Area	Selects the area of focus.
Soft Skin Effect	Sets the Soft Skin Effect and the effect level.
Smile/Face Detect.	Selects to detect faces and adjust various settings automatically. Sets to automatically release the shutter when a smile is detected.
Auto Port. Framing	Analyzes the scene when capturing a face and saves another image with a more impressive composition.
ISO	Adjusts the luminous sensitivity.
Metering Mode	Selects the metering mode that sets which part of the subject to measure to determine the exposure.

GB
21

Flash Comp.	Adjusts the intensity of flash output.
White Balance	Adjusts color tones of an image.
DRO/Auto HDR	Compensates automatically for brightness and contrast.
Creative Style	Selects the desired image processing.
Picture Effect	Shoots still images with a texture unique to the selected effect.
Clear Image Zoom	Provides a higher-quality zoomed image than with Digital Zoom.
Digital Zoom	Provides zoomed images at higher magnification than with Clear Image Zoom.
Long Exposure NR	Sets noise reduction processing for shots with a shutter speed of 1/3 second or longer.
High ISO NR	Sets noise reduction processing for high-sensitivity shooting.
AF Illuminator	Sets the AF illuminator, which provides light for a dark scene to aid focusing.
SteadyShot	Sets SteadyShot.
Color Space	Changes the range of reproducible colors.
Shooting Tip List	Accesses all shooting tips.
Write Date	Sets whether to record a shooting date on the still image.
Scene Selection	Selects pre-set settings to match various scene conditions.
Memory recall	Selects settings you want to recall when the mode dial is set to [Memory recall].
Memory	Registers the desired modes or camera settings.

Movie shooting menu

File Format	Selects the movie file format.
Record Setting	Selects the size of the recorded movie frame.
Image Size(Dual Rec)	Sets the still image size shot when recording a movie.
SteadyShot	Sets SteadyShot.
Audio Recording	Sets whether to record audio when shooting a movie.
Wind Noise Reduct.	Reduces wind noise during movie recording.
Movie	Selects the exposure mode to suit your subject or effect.

GB

Custom menu

Red Eye Reduction	Reduces the red-eye phenomenon when using flash.
Grid Line	Sets a grid line display to enable alignment to a structural outline.
Auto Review	Displays the captured image after shooting. Sets auto review.
DISP Button(Monitor)	Sets the screen display modes that can be selected by pressing DISP on the control wheel.
Peaking Level	Enhances the outline of in-focus ranges with a specific color.
Peaking Color	Sets the color used for the peaking function.
Control Ring	Assigns the desired functions to the Control Ring.
Control Ring Display	Sets whether to display animation when operating the Control Ring.
Function Button	Customizes the functions displayed when the Fn (Function) button is pressed.
Func. of Center Button	Assigns the desired functions to the center button.
Func. of Left Button	Assigns the desired functions to the left button.
Func. of Right Button	Assigns the desired functions to the right button.

GB
23

MF Assist	Displays an enlarged image when focusing manually.
Focus Magnif. Time	Sets the length of time the image will be shown in an enlarged form.
Face Priority Tracking	Sets whether to track faces as a priority when tracking.
Face Registration	Registers or changes the person to be given priority in the focus.

▶ Playback menu

Still/Movie Select	Selects the display format for images.
Delete	Deletes an image.
Slide Show	Shows a slide show.
Image Index	Displays multiple images at the same time.
3D Viewing	Connects to a 3D compatible TV and allows you to view 3D images.
Protect	Protects the images.
Specify Printing	Adds a print order mark to a still image.
Picture Effect	Adds various textures to images.
Volume Settings	Adjusts the volume.
Playback Display	Sets how to play back an image recorded in portrait.

▶ Memory Card Tool menu

Format	Formats the memory card.
File Number	Sets the method used to assign file numbers to still images and movies.
Select REC Folder	Changes the selected folder for storing images.
New Folder	Creates a new folder for storing still images and movies (MP4).
Recover Image DB	Recovers the image database file and enables recording and playback.
Display Card Space	Displays the remaining recording time of movies and the recordable number of still images on the memory card.

Clock setup menu

Date/Time Setup	Sets date and time, and daylight savings.
Area Setting	Sets the location of use.

Setup menu

Menu start	Sets the default position of the cursor on the menu to the top item or the last-selected item.
Mode Dial Guide	Turns the mode dial guide (the explanation of each shooting mode) on or off.
LCD Brightness	Sets the screen brightness.
Power Saving Start Time	Sets the length of time until the camera turns off automatically.
HDMI Resolution	Sets the resolution when the camera is connected to an HDMI TV.
CTRL FOR HDMI	Operates the camera from a TV that supports "BRAVIA" Sync.
Upload Settings*	Sets the upload function of the camera when using an Eye-Fi card.
USB Connection	Sets the USB connection method.
USB LUN Setting	Sets the mode when the camera is connected to a computer using a USB connection.
USB Power Supply	Sets whether to supply power using a USB connection.
Audio signals	Sets the operating sound of the camera.
Version	Displays the camera software version.
Language	Selects the language.
Drop Sensor	Sets the [Drop Sensor] function.
Demo Mode	Sets demonstration playback of a movie to on or off.
Initialize	Restores settings to their defaults.

* Appears when an Eye-Fi card (sold separately) is inserted into the camera.

Install “PlayMemories Home” (Windows)

The built-in software “PlayMemories Home” allows you to import still images and movies to your computer and use them.

You can shoot or play back images on this camera even if you do not install “PlayMemories Home”, however, “PlayMemories Home” is required to import AVCHD movies to your computer.

- 1 Connect the camera to a computer.
 - 2 Windows 7: [Computer] → camera icon → media icon → Double-click [PMHOME.EXE]
Windows XP/Vista: [Computer] (in Windows XP, [My Computer]) → [PMHOME] → Double-click [PMHOME.EXE]
 - 3 Follow the instructions on the screen to complete the installation.
-

Notes

- “PlayMemories Home” is not compatible to Mac OS. If you play back images on a Mac, use the applications that are installed on your Mac.
For details, visit the following URL.
<http://www.sony.co.jp/imsoft/Mac/>

■ Features of “PlayMemories Home”

Below are examples of the functions available when you use “PlayMemories Home”. To take advantage of the various “PlayMemories Home” functions, connect to the Internet and install the “Expanded Feature”.

- You can import images shot with the camera to a computer and display them.
- You can display images stored on a computer by shooting date in a calendar display.
- You can correct (Red Eye Correction, etc.) still images, print the images, send images by e-mail, and change the shooting date and time.
- You can save and print images with the date.
- You can create a disc from AVCHD movies imported to a computer. (Expanded Feature)

Install “Image Data Converter”

“Image Data Converter” allows you to develop RAW images.

- 1 Download the software from the following URL and install it on your computer.

Windows: <http://www.sony.co.jp/imsoft/Win/>

Mac: <http://www.sony.co.jp/imsoft/Mac/>

GB

■ Features of “Image Data Converter”

Below are examples of the functions available when you use “Image Data Converter”.

- You can edit RAW images using multiple correction functions, such as tone curve or sharpness.
- You can adjust images using white balance, aperture and Creative Style, etc.
- You can save displayed and edited still images to your computer.
There are two ways to save RAW images: save and leave as RAW data or save in a general-purpose file format.
- You can display and compare the RAW images/JPEG images that are shot with this camera.
- You can rank images in five levels.
- You can set the color label.

For other details, see Help under “Image Data Converter”.

Click [Start] → [All Programs] → [Image Data Converter] → [Help] → [Image Data Converter Ver.4].

“Image Data Converter” support page (English only)

<http://www.sony.co.jp/ids-se/>

Number of still images and recordable time of movies

The number of still images and recordable time may vary depending on the shooting conditions and the memory card.

■ Still images

Image Size: L: 20M

When [Aspect Ratio] is set to [3:2]*

Quality \ Capacity	2 GB
Standard	295 images
Fine	170 images
RAW & JPEG	58 images
RAW	88 images

* When the [Aspect Ratio] is set to other than [3:2], you can record more pictures than shown above. (Except when [Quality] is set to [RAW].)

■ Movies

The table below shows the approximate maximum recording times. These are the total times for all movie files. Continuous shooting is possible for approximately 29 minutes. The maximum size of an MP4-format movie file is up to approximately 2 GB.

(h (hour), m (minute))

Record Setting \ Capacity	2 GB
60i 24M(FX)/50i 24M(FX)	10 m
60i 17M(FH)/50i 17M(FH)	10 m
60p 28M(PS)/50p 28M(PS)	9 m
1440×1080 12M	15 m
VGA 3M	1 h 10 m

- The recordable time of movies varies because the camera is equipped with VBR (Variable Bit Rate), which automatically adjusts image quality depending on the shooting scene. When you record a fast-moving subject, the image is clearer but the recordable time is shorter because more memory is required for recording. The recordable time also varies depending on the shooting conditions, the subject or the image quality/size settings.

Notes on using the camera

GB

Functions built into this camera

- This manual describes 1080 60i-compatible devices and 1080 50i-compatible devices.
To check whether your camera is a 1080 60i-compatible device or 1080 50i-compatible device, check for the following marks on the bottom of the camera.
1080 60i-compatible device: 60i
1080 50i-compatible device: 50i
- This camera is compatible with 1080 60p or 50p-format movies. Unlike standard recording modes up to now, which record in an interlacing method, this camera records using a progressive method. This increases the resolution, and provides a smoother, more realistic image.

On use and care

Avoid rough handling, disassembling, modifying, physical shock, or impact such as hammering, dropping, or stepping on the product. Be particularly careful of the lens.

Notes on recording/playback

- Before you start recording, make a trial recording to make sure that the camera is working correctly.
- The camera is neither dust-proof, nor splash-proof, nor water-proof.
- Avoid exposing the camera to water. If water enters inside the camera, a malfunction may occur. In some cases, the camera cannot be repaired.
- Do not aim the camera at the sun or other bright light. It may cause the malfunction of the camera.
- If moisture condensation occurs, remove it before using the camera.
- Do not shake or strike the camera. It may cause a malfunction and you may not be able to record images. Furthermore, the recording media may become unusable or image data may be damaged.

Do not use/store the camera in the following places

- In an extremely hot, cold or humid place
In places such as in a car parked in the sun, the camera body may become deformed and this may cause a malfunction.
- Storing under direct sunlight or near a heater
The camera body may become discolored or deformed, and this may cause a malfunction.
- In a location subject to rocking vibration
- Near a location that generates strong radio waves, emits radiation or is strongly magnetic place. Otherwise, the camera may not properly record or play back images.
- In sandy or dusty places
Be careful not to let sand or dust get into the camera. This may cause the camera to malfunction, and in some cases this malfunction cannot be repaired.

On carrying

Do not sit down in a chair or other place with the camera in the back pocket of your trousers or skirt, as this may cause malfunction or damage the camera.

Carl Zeiss lens

The camera is equipped with a Carl Zeiss lens which is capable of reproducing sharp images with excellent contrast. The lens for the camera has been produced under a quality assurance system certified by Carl Zeiss in accordance with the quality standards of Carl Zeiss in Germany.

Notes on the screen

The screen is manufactured using extremely high-precision technology so over 99.99% of the pixels are operational for effective use. However, some tiny black and/or bright dots (white, red, blue or green) may appear on the screen. These dots are a normal result of the manufacturing process, and do not affect the recording.

Notes on the flash

- Do not carry the camera by the flash unit, or use excessive strength on it.
- If water, dust or sand get into the open flash unit, it may cause a malfunction.

On camera's temperature

Your camera and battery may get hot due to continuous use, but it is not a malfunction.

On the overheat protection

Depending on the camera and battery temperature, you may be unable to record movies or the power may turn off automatically to protect the camera.

A message will be displayed on the screen before the power turns off or you can no longer record movies. In this case, leave the power off and wait until the camera and battery temperature goes down. If you turn on the power without letting the camera and battery cool enough, the power may turn off again or you may be unable to record movies.

GB

On charging the battery

If you charge a battery that has not been used for a long time, you may be unable to charge it to the proper capacity.

This is due to the battery characteristics, and is not a malfunction. Charge the battery again.

Warning on copyright

Television programs, films, videotapes, and other materials may be copyrighted.

Unauthorized recording of such materials may be contrary to the provisions of the copyright laws.

No compensation for damaged content or recording failure

Sony cannot compensate for failure to record or loss or damage of recorded content due to a malfunction of the camera or recording media, etc.

Cleaning the camera surface

Clean the camera surface with a soft cloth slightly moistened with water, then wipe the surface with a dry cloth. To prevent damage to the finish or casing:

- Do not expose the camera to chemical products such as thinner, benzine, alcohol, disposable cloths, insect repellent, sunscreen or insecticide.

Specifications

Camera

[System]

Image device: 13.2 mm × 8.8 mm

(1.0 type) Exmor CMOS sensor

Total pixel number of camera:

Approx. 20.9 Megapixels

Effective pixel number of camera:

Approx. 20.2 Megapixels

Lens: Carl Zeiss Vario-Sonnar T* 3.6× zoom lens

f = 10.4 mm – 37.1 mm (28 mm – 100 mm (35 mm film equivalent))

F1.8 (W) – F4.9 (T)

While shooting movies (16:9):

29 mm – 105 mm^{*1}

While shooting movies (4:3):

36 mm – 128 mm^{*1}

^{*1} When [SteadyShot] is set to

[Standard]

SteadyShot: Optical

Exposure control: Automatic exposure,

Aperture priority, Shutter priority,

Manual exposure, Scene Selection

(13 modes)

White balance: Automatic, Daylight,

Shade, Cloudy, Incandescent,

Fluorescent (Warm White/

Cool White/Day White/Daylight),

Flash, Color temperature/Color

filter, Custom

Signal format:

For 1080 50i:

PAL color, CCIR standards HDTV

1080/50i, 1080/50p specification

For 1080 60i:

NTSC color, EIA standards HDTV

1080/60i, 1080/60p specification

File format:

Still images: JPEG (DCF, Exif, MPF Baseline) compliant, DPOF compatible

Movies (AVCHD format):

AVCHD format Ver. 2.0

compatible

Video: MPEG-4 AVC/H.264

Audio: Dolby Digital 2ch, equipped with Dolby Digital Stereo Creator

- Manufactured under license from Dolby Laboratories.

Movies (MP4 format):

Video: MPEG-4 AVC/H.264

Audio: MPEG-4 AAC-LC 2ch

Recording media: “Memory Stick

Duo” media, “Memory Stick

Micro” media, SD cards, microSD memory cards

Flash: Flash range (ISO sensitivity

(Recommended Exposure Index)

set to Auto):

Approx. 0.3 m to 17.1 m

(11 3/4 inches to 56 ft.

1 3/4 inches) (W)

Approx. 0.55 m to 6.3 m (1 ft.

9 1/2 inches to 20 ft. 8 inches) (T)

[Input and Output connectors]

HDMI connector: HDMI micro jack

Micro USB connector:

USB communication

USB communication: Hi-Speed USB

(USB 2.0)

[Screen]

LCD screen:

7.5 cm (3.0 type) TFT drive

Total number of dots:

1 228 800 dots

[Power, general]

Power: Rechargeable battery pack

NP-BX1, 3.6 V

AC Adaptor AC-UD10/UD11, 5 V

Power consumption (during shooting):

1.5 W

Operating temperature: 0 °C to 40 °C

(32 °F to 104 °F)

Storage temperature: -20 °C to +60 °C

(-4 °F to +140 °F)

Dimensions (CIPA compliant):

101.6 mm × 58.1 mm × 35.9 mm

(4 inches × 2 3/8 inches ×

1 7/16 inches) (W/H/D)

Mass (CIPA compliant) (including NP-

BX1 battery pack, “Memory Stick Duo” media):

Approx. 240 g (8.5 oz)

Microphone: Stereo

Speaker: Monaural

Exif Print: Compatible

PRINT Image Matching III:

Compatible

AC Adaptor AC-UD10/UD11

Power requirements: AC 100 V to

240 V, 50 Hz/60 Hz, 0.2 A

Output voltage: DC 5 V, 1 500 mA

Operating temperature: 0 °C to 40 °C

(32 °F to 104 °F)

Storage temperature: -20 °C to +60 °C

(-4 °F to +140 °F)

Dimensions:

AC-UD10: Approx. 78 mm ×

22 mm × 36 mm (3 1/8 inches ×

7/8 inches × 1 7/16 inches)

(W/H/D)

AC-UD11: Approx. 70 mm ×

33 mm × 36 mm (2 7/8 inches ×

1 5/16 inches × 1 7/16 inches)

(W/H/D)

Mass:

AC-UD10: Approx. 45 g (1.6 oz)

AC-UD11: Approx. 50 g (1.8 oz)

Rechargeable battery pack**NP-BX1**

Used battery: Lithium-ion battery

Maximum voltage: DC 4.2 V

Nominal voltage: DC 3.6 V

Maximum charge voltage: DC 4.2 V


Maximum charge current: 1.89 A

Capacity: 4.5 Wh (1 240 mAh)

Design and specifications are subject to change without notice.

GB

Trademarks

- The following marks are trademarks of Sony Corporation.
Cyber-shot, “Cyber-shot,”
“Memory Stick PRO Duo,”
“Memory Stick PRO-HG Duo,”
“Memory Stick Duo,” “Memory Stick Micro”
- “AVCHD Progressive” and “AVCHD Progressive” logotype are trademarks of Panasonic Corporation and Sony Corporation.
- Windows is registered trademark of Microsoft Corporation in the United States and/or other countries.
- Mac and Mac OS are registered trademarks of Apple Inc.
- SDXC logo is a trademark of SD-3C, LLC.
- “” and “PlayStation” are registered trademarks of Sony Computer Entertainment Inc.
- In addition, system and product names used in this manual are, in general, trademarks or registered trademarks of their respective developers or manufacturers. However, the TM or ® marks are not used in all cases in this manual.



- Add further enjoyment with your PlayStation 3 by downloading the application for PlayStation 3 from PlayStation Store (where available.)
- The application for PlayStation 3 requires PlayStation Network account and application download. Accessible in areas where the PlayStation Store is available.

Additional information on this product and answers to frequently asked questions can be found at our Customer Support Website.

<http://www.sony.net/>

Printed on 70% or more recycled paper using VOC (Volatile Organic Compound)-free vegetable oil based ink.

關於相機的詳細資訊（“Cyber-shot 使用者指南”）



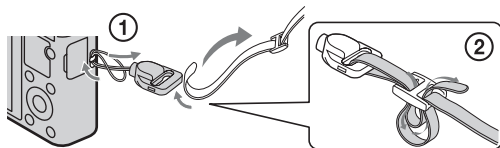
“Cyber-shot 使用者指南”是線上使用說明書。關於相機各種功能的深入使用說明，請參考此書。

- ① 進入 Sony 服務網頁。
<http://www.sony.net/SonyInfo/Support/>
- ② 選擇您的國家與地區。
- ③ 搜尋服務網頁內您相機的型號名稱。
 - 查看您相機底部的型號名稱。

檢查附件

括號中的數字代表的是件數。

- 相機 (1)
- 充電電池 NP-BX1 (1)
- 微型 USB 電纜 (1)
- 電源適配器 AC-UD10/UD11 (1)
- 電源線 (在美國與加拿大非附件) (1)
- 腕帶 (1)
- 掛帶轉接環 (2)
(如圖所示，掛帶轉接環用來安裝肩帶 (另售)。)



- 使用說明書 (本說明書) (1)

警告

為減少發生火災或電擊的危險，請勿讓本機暴露於雨中或受潮。

重要的安全指示

— 請保存這些指示危險

為了降低火災或電擊的危險，請小心遵守這些指示

CT

如果插頭的形狀與電源插座不合，請使用適合電源插座的插頭轉接頭。

注意

電池組

如果電池組處理不當，電池組可能會爆炸，造成火災，甚至化學灼傷。請遵循以下注意事項。

- 切勿拆解。
- 切勿擠壓，撞擊電池組或對電池組用力過度，如敲擊，跌落或踩踏在電池組上。
- 切勿短路或讓金屬物品接觸到電池端子。
- 切勿暴露在超過 60 °C 的高溫下，例如直射陽光下，或停在太陽下的汽車內。
- 切勿焚化或丟棄在火中。
- 切勿處理損壞或洩漏的鋰離子電池。
- 務必使用 Sony 原廠的充電器或可對電池組充電的裝置來為電池組充電。
- 電池組應放在幼兒不易觸及的地方。
- 使電池組保持乾燥。
- 請僅使用與 Sony 建議的相同或相等的電池類型進行更換。
- 請依照說明書中的說明正確丟棄舊電池組。

電源適配器

將電源適配器連接到附近的牆上電源插座。如果使用電源適配器時發生某些問題，請立即中斷插頭與牆上電源插座的連接，以關閉電源。

如果附帶電源線，則該電源線專為本相機設計，不能用於其他電子設備。

注意

本產品已經過測試並確定符合 EMC 規定中所提出的使用連接電纜不得超過 3 公尺的限制。

注意

特定頻率的電磁場可能會影響此機的畫面和聲音。

通知

如果靜電或電磁導致資料傳送中斷（失敗），請重新啟動應用程式或斷開連接，並重新連接通信電纜（USB 等）。

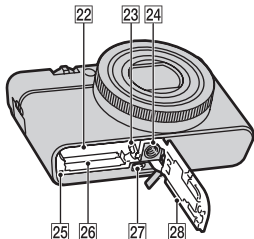
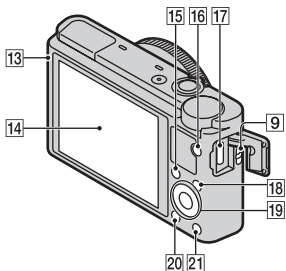
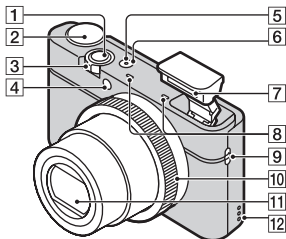
僅適用於台灣



廢電池請回收

附屬電纜上附有鐵芯時的注意事項：USB 電纜或 A/V 連接電纜或電源適配器之 DC 輸出線上的一个鐵芯係抑制電磁波干擾用，請勿任意拆卸。

認識各部件



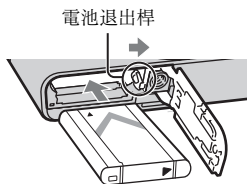
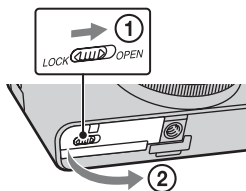
- 1 快門按鈕
- 2 模式轉盤
iA (智慧式自動) / iA+ (高級自動) / P (程式自動) / A (光圈優先) / S (快門速度優先) / M (手動曝光) / MR (記憶回復) / (動態影像) / (全景拍攝) / SCN (場景選擇)
- 3 用來拍攝: W/T (變焦) 桿
用來觀看: 索引 / 播放變焦桿
- 4 自拍定時器指示燈 / 微笑快門指示燈 / AF 照明器
- 5 電源 / 充電指示燈
- 6 ON/OFF (電源) 按鈕
- 7 閃光燈
 - 請勿以手指擋住閃光燈。
 - 使用閃光燈時，閃光燈會自動跳起來。如果不使用閃光燈，請以手動方式將其按下去。
- 8 麥克風
- 9 掛帶掛勾
- 10 控制環
- 11 鏡頭
- 12 揚聲器
- 13 光線感應器
- 14 LCD 螢幕
- 15 Fn (功能) 按鈕
- 16 MOVIE (動態影像) 按鈕
- 17 微型 USB 接頭
- 18 MENU 按鈕
- 19 控制輪

CT

- 20 ▶ (播放) 按鈕
- 21 ?/⏻ (相機指南 / 刪除) 按鈕
- 22 電池插槽
- 23 電池退出桿
- 24 三腳架螺絲孔
 - 請使用螺絲長度在 5.5 公釐以下的三腳架。否則無法將相機牢靠地固定住，而且可能會對相機造成損壞。

- 25 存取指示燈
- 26 記憶卡插槽
- 27 HDMI 小型插孔
- 28 電池 / 記憶卡蓋子

插入電池

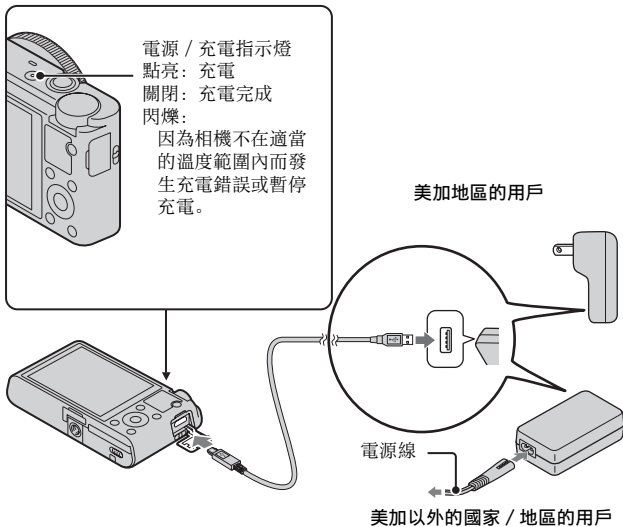


1 打開蓋子。

2 插入電池。

- 如圖所示，在按住電池退出桿的同時將電池插入。確認電池退出桿在插入後有鎖定。
- 電池插入不正確時關上電池蓋可能會損壞相機。

為電池充電



1 用微型 USB 電纜（附件）將相機連接到電源適配器（附件）。

2 將電源適配器連接到牆上的電源插座。

電源 / 充電指示燈點亮橘色的燈，充電開始。

- 為電池充電時關閉相機。
- 即使電力沒有完全放光，也可以為電池充電。
- 電源 / 充電指示燈閃爍而且充電未完成時，取出電池之後再插回去。

附註

- 電源適配器連接到牆上的電源插座時，如果相機上的電源 / 充電指示燈閃爍，表示因為溫度超出建議範圍外而暫停充電。溫度回到適當的範圍內時，會恢復充電。建議您在 10 °C 至 30 °C 的環境溫度下對電池充電。
- 電池的端子部分如果髒了，可能無法有效地充電。遇到這種情況時，請用軟布或棉花棒輕輕地將所有髒東西擦掉，以清潔電池的端子部分。
- 將電源適配器（附件）連接到最近的牆上電源插座。如果使用電源適配器時發生故障，請立即將插頭從插座拔掉以中斷電源。
- 充電完成時，將電源適配器從牆上的電源插座拔掉。
- 務必只使用原廠的 Sony 電池、微型 USB 電纜（附件）以及電源適配器（附件）。

■ 充電時間（完全充電）

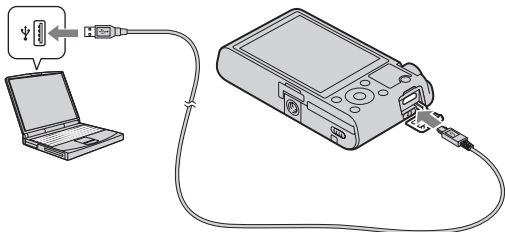
使用電源適配器（附件）的充電時間大約 155 分鐘。

附註

- 上述充電時間適用於在 25 °C 的溫度下為放完電的電池充電的情況。充電可能因為使用情況或環境而需要長一點的時間。

■ 連接到電腦上充電

用微型 USB 電纜將相機連接到電腦，便可以為電池充電。



附註

- 經由電腦充電時，請注意下列幾點：
 - 如果相機是連接在沒有連接電源的到膝上型電腦，電腦的電池電量會降低。請不要長時間充電。
 - 在相機與電腦之間建立 USB 連接時，不要開 / 關或重新啟動電腦，或者是將電腦從休眠模式中喚醒。相機可能會造成故障。開 / 關電腦或重新啟動電腦，或者喚醒休眠模式中的電腦之前，要中斷相機與電腦的連接。
 - 對於自行組裝的電腦或修改過的電腦，不保證能夠充電。

■ 電池使用時間以及可以記錄與播放的影像數目

	電池使用時間	影像數目
拍攝（靜態影像）	大約 165 分鐘	大約 330 張影像
檢視（靜態影像）	大約 250 分鐘	大約 5000 張影像
拍攝（動態影像）	大約 80 分鐘	—

附註

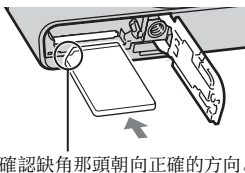
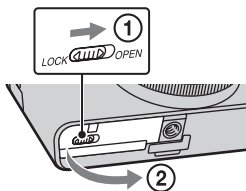
- 上述影像數目適用於電池充滿電的情況。視使用情況而定，影像的數目可能會減少。
- 可以記錄的影像數目是在下列情況下拍攝的：
 - 使用 Sony “Memory Stick PRO Duo”（Mark2）（另售）
 - 在周邊溫度為 25 °C 時使用電池。
- “拍攝（靜態影像）”的數目以 CIPA 標準為根據，在下列情況下進行拍攝：（CIPA: Camera & Imaging Products Association）
 - DISP 設定為 [顯示所有資訊]。
 - 每 30 秒鐘拍一張。
 - 變焦在 W 和 T 端交替轉換。
 - 每拍攝兩次閃光燈閃光一次。
 - 每拍攝十次打開和關閉電源一次。
- 動態影像的電池使用時間適用於下列拍攝情況：
 - 錄製設定 :60i 17M (FH) /50i 17M (FH)
 - 連續拍攝因為設定限制（29 分鐘）而結束時，再度按下 MOVIE（動態影像）按鈕以便繼續拍攝。變焦之類的拍攝功能將會無法使用。

CT

■ 供電

用微型 USB 電纜（附件）連接到電源適配器（附件），便可以從牆上的電源插座為相機供應電源。這樣長時間拍攝或者相機連接到電視機或電腦時，便不需要擔心電池沒電。相機裡沒有電池也可以拍攝與播放。

插入記憶卡（另售）



1 打開蓋子。

2 插入記憶卡（另售）。

- 缺角那頭朝向圖示方向，將記憶卡插入到卡入定位為止。

3 關上蓋子。

■ 可以使用的記憶卡

	記憶卡	適用於靜態影像	適用於動態影像
A	Memory Stick PRO Duo	✓	✓ (僅限 Mark2)
	Memory Stick PRO-HG Duo	✓	✓
	Memory Stick Duo	✓	—
B	Memory Stick Micro (M2)	✓	✓ (僅限 Mark2)
C	SD 記憶卡	✓	✓ (等級 4 或者更快)
	SDHC 記憶卡	✓	✓ (等級 4 或者更快)
	SDXC 記憶卡	✓	✓ (等級 4 或者更快)
D	microSD 記憶卡	✓	✓ (等級 4 或者更快)
	microSDHC 記憶卡	✓	✓ (等級 4 或者更快)

CT

- 在本說明書中，表中的產品統稱如下：

A: “Memory Stick Duo”

B: “Memory Stick Micro”

C: SD 卡

D: microSD 記憶卡

附註

- 以本相機使用 “Memory Stick Micro” 或 microSD 記憶卡時，務必要使用適當的轉接卡。

■ 若要取出記憶卡 / 電池

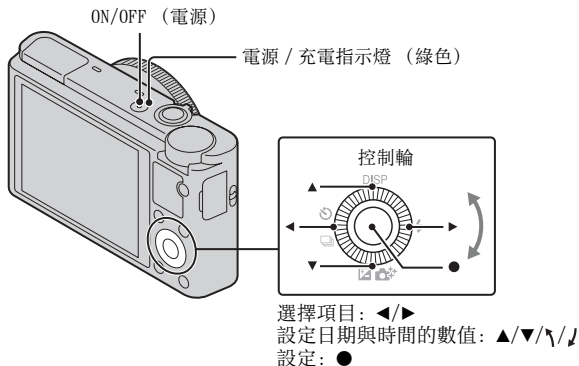
記憶卡：將記憶卡往裡壓一下以退出記憶卡。

電池：推動電池退出桿。小心不要讓電池掉落地上。

附註

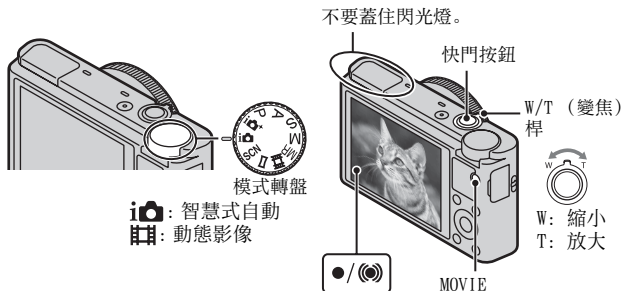
- 存取指示燈（第 5 頁）點亮時切勿取出記憶卡 / 電池。這樣可能會對記憶卡中的資料造成損壞。

設定時鐘



- 1 按 ON/OFF (電源) 按鈕。
日期與時間設定會在您首次開機時顯示出來。
 - 可能需要一點時間才能開啟電源並進行操作。
- 2 確認已經選取螢幕上的 [進入]，然後按控制輪上的 ●。
- 3 按照螢幕上的指示選取一個您要的地理位置，然後按 ●。
- 4 設定 [日光節約時間:]、日期與 [日期格式:]，然後按 ●。
 - 午夜會顯示為 12:00 AM，而正午則是 12:00 PM。
- 5 確認已經選取 [進入]，然後按 ●。

拍攝靜態影像 / 動態影像



拍攝靜態影像

1 將快門按鈕按下一半以便對焦。

影像合焦時，會發出一個嗶音，而且 ● 或 (●) 指示燈會點亮。

2 將快門按鈕完全按下去以拍攝影像。

拍攝動態影像

1 按下 MOVIE (動態影像) 按鈕開始記錄。

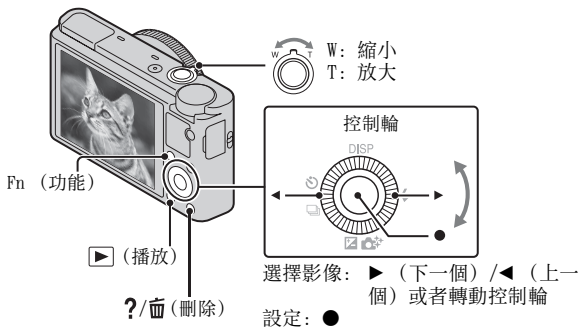
- 用 W/T (變焦) 桿變更變焦比率。
- 繼續記錄動態影像的同時按快門按鈕拍攝靜態影像。

2 再度按下 MOVIE 按鈕停止記錄。

附註

- 不要以手動方式拉起閃光燈。這樣可能會造成故障。
- 用變焦功能拍攝動態影像時，相機的操作聲音會被錄下來。動態影像記錄完成時，MOVIE 按鈕的運作聲音也可能會被記錄下來。
- 在 25 °C 左右的溫度下，以相機的預設設定拍攝時，一次可以連續拍攝大約 29 分鐘。動態影像記錄完成時，可以再按一下 MOVIE 按鈕以重新開始記錄。視周遭溫度而定，記錄可能會停止以保護相機。

觀看影像



1 按▶ (播放) 按鈕。

- 您可以選擇 MENU → ▶ 1 → [靜態 / 動態影像選擇]，以便在靜態影像與動態影像顯示模式之間切換。

■ 選擇下一個 / 上一個影像

按控制輪上的 ▶ (下一個) / ◀ (上一個) 或者轉動控制輪，以選擇一個影像。按控制輪中央的 ● 以檢視動態影像。

■ 刪除影像

- ① 按?/⏏ (刪除) 按鈕。
- ② 用控制輪上的 ▲ 選擇 [刪除]，然後按 ●。

■ 轉動影像

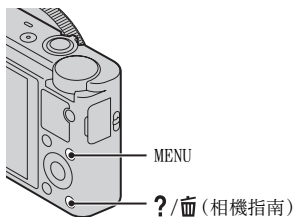
按 Fn (功能) 按鈕。

■ 恢復拍攝影像

將快門按鈕按下一半。

檢視指南

本相機配備有內建的使用指南。



CT

相機指南

相機會顯示 MENU 項目與設定值的解釋。

- 1 按 MENU 按鈕。
- 2 選擇您要的 MENU 項目，然後按 ?/GUIDE (相機指南) 按鈕。

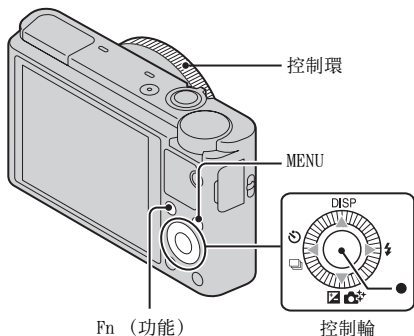
拍攝秘訣

相機會顯示所選拍攝模式的拍攝秘訣。

- 1 在拍攝模式中按 ?/GUIDE (相機指南) 按鈕。
- 2 選擇您要的拍攝秘訣，然後按控制輪上的 ●。
拍攝秘訣就會顯示出來。
 - 您可以用 ▲/▼ 捲動畫面，然後用 ◀/▶ 變更拍攝秘訣。

其他功能簡介

其他功能可以用控制輪、MENU 按鈕等等操作。



■ 控制輪

DISP (顯示內容)：讓您變更螢幕顯示。

⚡ (閃光燈模式)：讓您選擇靜態影像的閃光燈模式。

☑/⊕ (曝光補償 / 相片創造)：讓您調整影像亮度。讓您在拍攝模式設定為 [智慧式自動] 或 [高級自動] 時，變更 [背景離焦]、[亮度]、[色彩]、[鮮明] 以及 [相片效果]。

🕒/📷 (過片模式)：讓您使用自拍定時器和連拍模式。

● (追蹤對焦)：即使被攝體正在移動，相機也會追蹤被攝體並自動調整對焦。

■ Fn (功能) 按鈕

讓您登記七種功能，並在拍攝時調用這些功能。

- ① 按 Fn (功能) 按鈕。
- ② 用 Fn (功能) 按鈕或者控制輪上的 ◀/▶ 選擇要使用的功能。
- ③ 轉動控制輪或控制環以選取設定值。

■ 控制環

您偏好的功能可以指定給控制環，拍攝時，只要轉動控制環便可以變更已經建立的設定。

■ 功能表項目

📷 靜態影像拍攝功能表

影像尺寸	選擇靜態影像的大小。
長寬比	選擇靜態影像的長寬比。
影像質量	設定靜態影像的畫質。
全景：影像尺寸	選擇全景影像的大小。
全景：方向	設定全景影像的拍攝方向。
過片模式	設定過片模式，例如連續拍攝。
閃光燈模式	設定閃光燈設定值。
對焦模式	選擇對焦方式。
自動對焦區域	選擇對焦區域。
柔膚效果	設定美膚效果以及效果的等級。
微笑 / 面孔偵測	選此選項以便偵測面孔，並自動調整各項設定。設定在偵測到微笑時自動釋放快門。
自動肖像取景	捕捉面孔影像時分析場景，並以更令人印象深刻的構圖儲存另一個影像。
ISO	調整感光度。
測光模式	選擇測光模式，以設定要根據被攝體的那個部分決定曝光值。
閃光補償	調整閃光燈輸出的強度。
白平衡	調整影像的色調。
DRO/ 自動 HDR	自動補償亮度與對比度。
風格設定	選擇要使用的影像處理。
相片效果	以所選效果特有的畫質拍攝靜態影像。
清晰影像縮放	提供畫質比數位變焦更好的變焦影像。
數位變焦	提供放大率比清晰影像縮放更高的變焦影像。
消除長曝雜訊	為快門速度為 1/3 秒鐘或者更長的拍攝設定雜訊消除處理。
高 ISO 雜訊消除	為高感光度的拍攝設定雜訊消除處理。
AF 輔助照明	設定 AF 輔助照明，為黑暗場景提供照明以輔助對焦。

CT

CT
17

SteadyShot	設定 SteadyShot。
色彩空間	變更可再生色彩的範圍。
拍攝祕訣清單	檢視所有拍攝秘訣。
寫入日期	設定是否在靜態影像上記錄拍攝日期。
場景選擇	選擇預設的設定，以便與各種場景條件配合。
記憶回復	模式轉盤設定為 [記憶回復] 時，選擇您要調用的設定。
記憶	登記要使用的模式或相機設定。

目 動態影像拍攝功能表

檔案格式	選擇動態影像檔案格式。
錄製設定	選擇記錄動態影像框的尺寸。
影像尺寸 (Dual Rec)	設定記錄動態影像時拍攝的靜態影像尺寸。
SteadyShot	設定 SteadyShot。
音訊錄製	設定拍攝動態影像時是否記錄聲音。
減少風噪音	記錄動態影像時減少風噪音。
動態影像	選擇適合拍攝物體或效果的曝光模式。

⚙ 自訂功能表

紅眼減弱	減少使用閃光燈時的紅眼現象。
格線	設定格線顯示，以便與結構輪廓對齊。
自動檢視	拍攝之後顯示捕捉到的影像。設定自動檢視。
DISP 按鈕 (螢幕)	設定按控制輪上的 DISP 時可以選擇的螢幕顯示模式。
峰值等級	以特定的色彩強調合焦範圍的外框。
峰值顏色	設定用於峰值功能的色彩。
控制環	將您要用的功能指定給控制環。
控制環顯示	設定是否在操作控制環時顯示動畫。
功能按鈕	自訂按下 Fn (功能) 按鈕時顯示的功能。

中央按鈕功能	將您要用的功能指定給中間按鈕。
左側按鈕功能	將您要用的功能指定給左側按鈕。
右側按鈕功能	將您要用的功能指定給右側按鈕。
MF 輔助	手動對焦時顯示放大的影像。
對焦放大時間	設定以放大方式顯示影像的時間長度。
面孔優先追蹤	設定追蹤時是否優先追蹤面孔。
面孔登錄	登記或變更要優先對焦的人。

CT

▶ 播放功能表

靜態 / 動態影像選擇	選擇影像的顯示格式。
刪除	刪除一個影像。
循環播放	顯示循環播放。
影像索引	同時顯示多個影像。
3D 檢視	連線至與 3D 相容的電視機，讓您觀賞 3D 影像。
保護	保護影像。
指定列印	為一個靜態影像添加列印預定標記。
相片效果	為影像添加各種紋理。
音量設定	調整音量。
播放顯示	設定如何播放以縱向記錄的影像。

◀ 記憶卡工具功能表

格式化	格式化記憶卡。
檔案編號	設定用來指定檔案編號給靜態影像與動態影像的方法。
選擇 REC 資料夾	變更選擇用來儲存影像的資料夾。

新資料夾	建立新資料夾用來儲存靜態影像與動態影像 (MP4)。
還原影像資料庫	還原影像資料庫檔案，以便記錄與播放。
顯示記憶卡空間	顯示記憶卡上動態影像的剩餘記錄時間與可以記錄的靜態影像數目。

🕒 時鐘設置功能表

日期 / 時間設定	設定日期與時間，以及日光節約時間。
區域設定	設定使用的地方。

🔧 設置功能表

選單開始位置	將游標在功能表上的預設位置設定為最頂端的項目或者上次選擇的項目。
模式轉盤指南	開啟或關閉模式轉盤指南（解釋各種拍攝模式）。
LCD 亮度	設定螢幕亮度。
省電開始時間	設定相機自動關機前的等待時間。
HDMI 解析度	設定相機連接到 HDMI 電視機時的解析度。
HDMI 控制	從支援 “BRAVIA” Sync 的電視機操作相機。
上傳的設定 *	設定使用 Eye-Fi 卡時相機的上傳功能。
USB 連線	設定 USB 連接方式。
USB LUN 設定	設定用 USB 連接方式將相機連接到電腦時的模式。
USB 電源供給	設定是否用 USB 連接方式供電。
音頻訊號	設定相機的操作聲音。
版本	顯示相機的軟體版本。
語言	選擇語言。
跌落傳感器	設定 [跌落傳感器] 功能。
示範模式	設定開啟或關閉動態影像的展示播放。
初始化	將設定恢復為預設值。

* 出現於相機中插入 Eye-Fi 卡（另售）時。

安裝“PlayMemories Home” (Windows)

內建的軟體“PlayMemories Home”可以讓您將靜態影像與動態影像匯入電腦並加以使用。

即使沒有安裝“PlayMemories Home”，也可以用本相機拍攝或播放影像，不過，必須要有“PlayMemories Home”才能將 AVCHD 動態影像匯入電腦。

1 將相機連接到電腦。

2 Windows 7: [電腦] → 相機圖示 → 媒體圖示 → 按兩下 [PMHOME.EXE]

Windows XP/Vista: [電腦] (在 Windows XP 中，則是 [我的電腦]) → [PMHOME] → 按兩下 [PMHOME.EXE]

3 按照畫面上的指示完成安裝。

附註

- “PlayMemories Home”與 Mac OS 不相容。如果在 Mac 上播放影像，請使用 Mac 上安裝的應用程式。

詳情請造訪下列 URL:

<http://www.sony.co.jp/imsoft/Mac/>

■ “PlayMemories Home” 的功能

底下是使用“PlayMemories Home”時的可用功能範例。若要利用“PlayMemories Home”的各種功能，請連線至網際網路，並安裝“擴充功能”。

- 您可以將用相機拍攝的影像匯入電腦並加以顯示。
- 您可以在日曆顯示畫面中按拍攝日期顯示儲存於電腦上的影像。
- 您可以校正（紅眼校正等）靜態影像、列印影像、用電子郵件傳送影像以及變更拍攝日期和時間。
- 您可以儲存並列印有日期的影像。
- 您可以從匯入電腦的 AVCHD 動態影像製作光碟。（擴充功能）

安裝 “Image Data Converter”

“Image Data Converter” 可以讓您處理 RAW 影像。

1 從下列 URL 下載軟體，並將其安裝在您的電腦上。

Windows:<http://www.sony.co.jp/imsoft/Win/>

Mac:<http://www.sony.co.jp/imsoft/Mac/>

■ “Image Data Converter” 的功能

底下是使用 “Image Data Converter” 時的可用功能範例。

- 您可以用色調曲線或清晰度之類的各種校正功能編輯 RAW 影像。
- 您可以用白平衡、光圈以及風格設定等調整影像。
- 您可以將顯示並編輯過的靜態影像儲存到您的電腦。

儲存 RAW 影像的方法有兩種：儲存並保留為 RAW 資料，或者以通用型檔案格式儲存。

- 您可以顯示並比較以本相機拍攝的 RAW 影像 / JPEG 影像。
- 您可以用五種等級將影像分級。
- 您可以設定色彩標籤。

其他細節請參閱 “Image Data Converter” 底下的說明。

按一下 [開始] → [所有程式] → [Image Data Converter] → [說明] → [Image Data Converter Ver.4]。

“Image Data Converter” 服務網頁（只有英文）

<http://www.sony.co.jp/ids-se/>

靜態影像的數目和可以記錄的動態影像時間

靜態影像的數目和可以記錄的動態影像時間可能會因為拍攝條件和記憶卡而異。

■ 靜態影像

影像尺寸 : L: 20M

[長寬比] 設定為 [3:2] * 時

影像質量 \ 容量	2 GB
標準	295 張影像
精細	170 張影像
RAW 與 JPEG	58 張影像
RAW	88 張影像

CT

* [長寬比] 不是設定為 [3:2] 時，您可以記錄的相片張數會比上述張數更多。（[影像質量] 設定為 [RAW] 時例外。）

■ 動態影像

下表顯示的是大略的最長記錄時間。這些是所有動態影像檔案的總時間。可以持續拍攝約 29 分鐘。MP4 格式動態影像檔案最大可以高達約 2 GB。

(h (時), m (分))

錄製設定 \ 容量	2 GB
60i 24M (FX) / 50i 24M (FX)	10 m
60i 17M (FH) / 50i 17M (FH)	10 m
60p 28M (PS) / 50p 28M (PS)	9 m
1440 × 1080 12M	15 m
VGA 3M	1 h 10 m

- 動態影像可以記錄的時間會因為相機配備有可以根據拍攝場景而自動調整畫質的 VBR (Variable Bit Rate) 而有所不同。記錄快速移動的被攝體時，影像會比較清晰，但是可以記錄的時間會比較短，因為需要更多記憶體來記錄。
可以記錄的時間也會因為拍攝條件、被攝體或者畫質 / 尺寸的設定而有所不同。

CT
23

使用相機的注意事項

本相機內建的功能

- 本說明書描述 1080 60i 相容裝置與 1080 50i 相容裝置。
若要查看您的相機是否是與 1080 60i 或 1080 50i 相容的裝置，請查看相機底部的下列標誌。
1080 60i 相容裝置: 60i
1080 50i 相容裝置: 50i
- 本相機與 1080 60p 或 50p 格式的動態影像相容。與到目前為止都是以隔行掃描法記錄的標準記錄模式不同的是，本相機是以逐行掃描法記錄。這樣可以增加解析度，提供更順暢、更真實的影像。

關於使用和維護

對於產品要避免粗暴的使用、拆解、修改、實體衝擊或者敲打、跌落或踐踏之類的撞擊。對於鏡頭要特別小心。

關於記錄 / 播放的注意事項

- 開始拍攝之前，要進行試拍，以確定相機能正確的運作。
- 本相機不防塵、不防潑濺、也不防水。
- 避免讓相機接觸到水。如果有水進入相機內，可能會發生故障。在某些情況下，相機無法修復。
- 請勿用相機朝向太陽或其它強光。那樣可能會令您的相機故障。
- 如果有濕氣凝結，要在使用相機之前將其清除。
- 請勿搖晃或撞擊本相機。那樣可能會造成故障，您可能無法記錄影像。而且，記錄媒體可能變成無法使用，或者影像資料可能受損。

請勿在下列地方使用 / 存放相機

- 在非常炎熱、寒冷或潮濕的地方
例如，在停在太陽底下的車廂中，相機機身可能變形而造成故障。
- 存放在直射的陽光下或加熱器附近
相機機身可能褪色或變形，而這可能會造成故障。
- 在會受到搖擺振動的地方
- 靠近會產生強烈無線電波、發出輻射或者強烈磁性的地方。否則相機可能無法正確地記錄或播放影像。
- 在多沙或多灰塵的地方
小心不要讓沙子或灰塵進入相機中。否則可能會造成相機故障，有時候這種故障是無法修理的。

攜帶時

不要在相機放置於褲子或裙子的後面口袋中時坐在椅子或其他地方，因為這樣可能會造成故障或者損害相機。

Carl Zeiss 鏡頭

本相機配備有 Carl Zeiss 鏡頭，能以優越的對比再生清晰的影像。本相機的鏡頭是根據德國 Carl Zeiss 的品質標準，在經過 Carl Zeiss 認證的品質保證系統底下生產的。

關於螢幕的說明

螢幕利用極高精確度技術製造，所以 99.99% 以上的像素都可以有效的使用。不過，您可能會發現細小的黑點和 / 或亮點（白色、紅色、藍色或綠色）出現在螢幕上。這些點是生產過程中的正常結果，不會影響記錄。

關於閃光燈的注意事項

- 請不要以抓住閃光燈的方式拿相機，或者是對閃光燈施加太大的力量。
- 如果水、灰塵或沙子進入開啟的閃光燈，可能會造成故障。

關於相機的溫度

您的相機和電池可能因為持續使用而變熱，但是這並不是故障。

關於過熱保護

您可能無法記錄動態影像，或者電源可能會自動關閉以保護相機，這點要視相機和電池溫度而定。

螢幕上會出現一個訊息，然後電源會關閉，或者您無法再記錄動態影像。遇到這種情況時，將電源關閉，等到相機與電池溫度下降為止。如果不讓相機與電池溫度降得夠低就開啟電源，電源可能會再度關閉或者可能會無法記錄動態影像。

關於為電池充電

如果為很久沒用的電池充電，可能無法將其充到適當的容量。這是因為電池特性的緣故，並不是故障。請再為電池充電。

版權警告

電視節目、影片、錄影帶及其它資料可能具有版權。未經許可錄製這些資料將會觸犯版權法。

對於損壞的內容或記錄失敗不補償

對於因為相機或記錄媒體等的故障而造成的記錄失敗或記錄內容遺失或損壞，Sony 不能補償。

清潔相機表面

用沾了一點水的軟布清潔相機表面，然後以乾布擦拭表面。若要防止傷害表面塗層或外殼：

- 請不要讓相機接觸化學產品如稀釋劑、揮發油、酒精、用過即丟的清潔布、驅蟲劑、遮光劑或殺蟲劑。

規格

相機

[系統]

影像裝置: 13.2 公釐 × 8.8 公釐

(1.0 型) Exmor CMOS 感應器

相機的總像素數:

約 20.9 百萬像素

相機的有效像素數:

約 20.2 百萬像素

鏡頭: Carl Zeiss Vario-Sonnar

T* 3.6 × 變焦鏡頭

f = 10.4 公釐 - 37.1 公釐

(28 公釐 - 100 公釐 (35 公釐
的底片機))

F1.8 (W) - F4.9 (T)

拍攝動態影像 (16:9) 時:

29 公釐 - 105 公釐^{*1}

拍攝動態影像 (4:3) 時:

36 公釐 - 128 公釐^{*1}

^{*1} 當 [SteadyShot] 設為 [標
準] 時

SteadyShot: 光學

曝光控制: 自動曝光, 光圈優先,
快門優先, 手動曝光, 場景選擇
(13 種模式)

白平衡: 自動, 日光, 陰影, 陰天,
白熾燈, 螢光燈 (暖白 / 冷白 /
白天 / 日光), 閃光燈, 色溫 /
濾色鏡, 自訂

訊號格式:

1080 50i:

PAL 彩色, CCIR 標準 HDTV

1080/50i, 1080/50p 規格

1080 60i:

NTSC 彩色, EIA 標準 HDTV

1080/60i, 1080/60p 規格

檔案格式:

靜態影像: 符合 JPEG (DCF,
Exif, MPF Baseline) 標準, 相
容於 DPOF

動態影像 (AVCHD 格式):

AVCHD 格式 Ver. 2.0 相容

視訊: MPEG-4 AVC/H.264

音訊: Dolby Digital 2 聲道,

配備 Dolby Digital Stereo

Creator

• 由 Dolby Laboratories 授權製
造。

動態影像 (MP4 格式):

視訊: MPEG-4 AVC/H.264

音訊: MPEG-4 AAC-LC 2 聲道

記錄媒體: "Memory Stick Duo",

"Memory Stick Micro", SD

卡, microSD 記憶卡

閃光燈: 閃光範圍 (ISO 感光度

(建議曝光指數) 設定為自

動):

約 0.3 公尺至 17.1 公尺 (W)

約 0.55 公尺至 6.3 公尺 (T)

[輸入和輸出接頭]

HDMI 接頭: HDMI 小型插孔

微型 USB 接頭:

USB 通訊

USB 通訊: Hi-Speed USB (USB

2.0)

[螢幕]

LCD 螢幕:

7.5 公分 (3.0 型) TFT 驅動

總點數:

1 228 800 點

CT

[電源，一般]

電源：充電電池 NP-BX1, 3.6 V

電源適配器 AC-UD10/UD11, 5 V

電池消耗量（進行拍攝時）：1.5 W

操作溫度：0 °C至 40 °C

存放溫度：-20 °C至 +60 °C

尺寸（符合 CIPA 標準）：

101.6 公釐× 58.1 公釐×

35.9 公釐（長 / 寬 / 高）

質量（符合 CIPA 標準）（包含 NP-

BX1 電池、“Memory Stick

Duo”）：

約 240 公克

麥克風：立體聲

揚聲器：單聲

Exif Print：相容

PRINT Image Matching III：相容

電源適配器 AC-UD10/UD11

電源要求：AC 100 V 至 240 V，

50 Hz/60 Hz, 0.2 A

輸出電壓：DC 5 V, 1 500 mA

操作溫度：0 °C至 40 °C

存放溫度：-20 °C至 +60 °C

尺寸：

AC-UD10：約 78 公釐× 22 公釐

× 36 公釐（長 / 高 / 寬）

AC-UD11：約 70 公釐× 33 公釐

× 36 公釐（長 / 高 / 寬）

質量：

AC-UD10：約 45 公克

AC-UD11：約 50 公克

充電電池 NP-BX1

使用的電池：鋰離子電池

最大電壓：DC 4.2 V

額定電壓：DC 3.6 V

最大充電電壓：DC 4.2 V

最大充電電流：1.89 A

容量：4.5 Wh（1 240 mAh）

設計及規格如有變更，恕不另行通知。

商標

- 下列標記是 Sony Corporation 的商標。

Cyber-shot、“Cyber-shot”、“Memory Stick PRO Duo”、“Memory Stick PRO-HG Duo”、“Memory Stick Duo”、“Memory Stick Micro”

- “AVCHD Progressive”與“AVCHD Progressive”標誌是 Panasonic Corporation 與 Sony Corporation 的商標。
- Windows 是 Microsoft Corporation 在美國和 / 或其他國家的註冊商標。
- Mac 和 Mac OS 是 Apple Inc. 的註冊商標。
- SDXC 標誌是 SD-3C, LLC 的商標。
- “”和“PlayStation”是 Sony Computer Entertainment Inc. 的註冊商標。
- 此外，在本說明書中所使用的系統和產品的名稱通常是他們各自的開發商或製造商的商標或註冊商標。但是在本說明書中並未在所有場合使用™或®標誌。



- 從 PlayStation Store（在有這些店的地方）下載 PlayStation 3 的應用程式，可以用您的 PlayStation 3 增添更多樂趣。
- PlayStation 3 的應用程式需要有 PlayStation Network 帳戶與應用程式下載。只能在有 PlayStation Store 的地方使用。

在我們的客戶支援網站可以查到本產品新增的資訊和常見問題的答案。

<http://www.sony.net/>

使用基於不含有 VOC（揮發性有機成分）的植物油的油墨在 70% 以上再生紙上印刷。

CT

