

Android TV™ Igayidi yokusetha

Ukuxhuma i-TV yakho ku-inthanethi kukuvumela ukuthi ulande izinhlelo namageyimu futhi ujabulele amasevisi wevidiyo aku-inthanethi, njengoba ungakwazi ngama-smartphone namathwebulethi. Le gayidi ichaza ukuthi ungayisetha kanjani i-TV yakho kulezo zici.

Ngeke udinge ukusebenzisa le gayidi uma ufuna ukubuka kuphela izinhlelo ze-TV ngokuvamile.



(Zonke izithombe zesikrini nemiyalo eyenguqulo yesiNgisi.)

(Gcina le gayidi nemanuwali yemiyalo ngereferensi yangakusasa.)

Ukulanda izinhlelo nemidlalo

- 1. Ukuxhuma i-TV yakho ku-inthanethi 2
- 2. Ukungena ngemvume ku-akhawunti ye-Google™ nge-TV yakho 5
- 3. Ukulanda izinhlelo namageyimu kusuka kusitolo se-Google Play™ 7

Gebruik van die Sony-internetdiens

- 4. Gebruik van die Sony-internetdiens 8

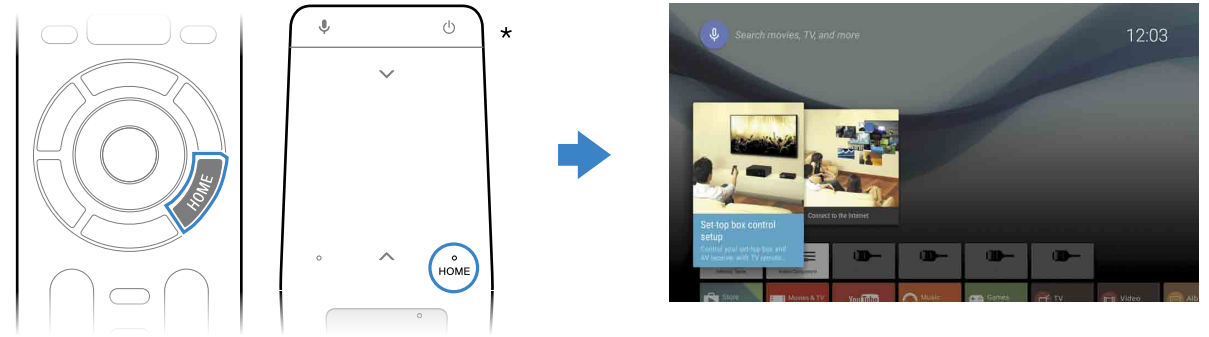
1 Ukuxhuma i-TV yakho ku-inthanethi

Kokuqala, uzodinga ukuxhuma i-TV yakho ku-inthanethi ngoxhumo olungenazintambo (I-Wi-Fi) noma olunezintambo. Uzodinga uxhumo le-inthanethi: ngemininingwane xhumana nomhlinzeki wakho wesevisi ye-inthanethi. Yeqa lesi sinyathelo uma i-TV yakho isivele ixhumekele ku-inthanethi.

Ukuze uhlole isimo soxhumo se-inthanethi Nezilungiselelo Zenethiwekhi njengekheli le-MAC, khetha [Usizo] kunkinobho yemenyu Ekhaya, bese ukhethe [Bheka isimo senethwekhi].

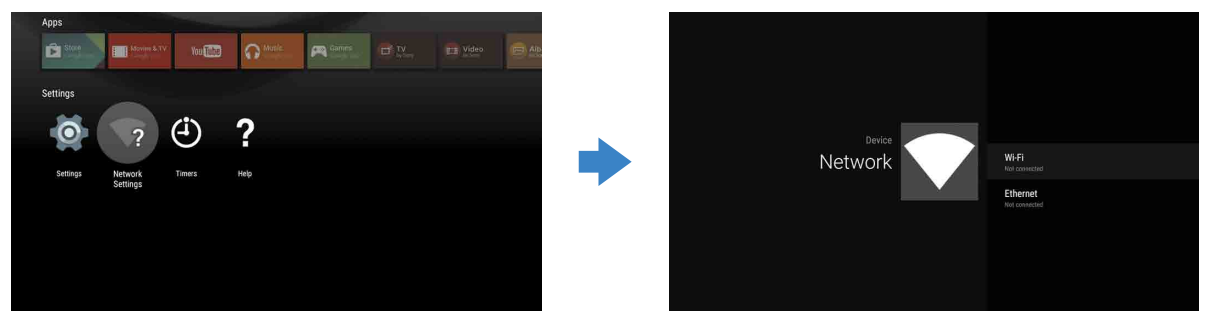
Ukuxhuma ku-inthanethi ngokungenazintambo (nge-I-Wi-Fi)

1 Cindezela inkonobho HOME yerimothi ukuze ubonise Imenyu Ekhaya.



* I-Touchpad Remote Control ayinikeziwe kuwo wonke amamodeli.

2 Kumenyu Ekhaya, hambisa ukugxila phansi kwesikrini, bese ukhethe [Izilungiselelo Zenethiwekhi] — [I-Wi-Fi].



3 Khetha izinyathelo zokusetha ezilungile zerutha yakho engenazintambo:

Ingabe irutha yakho engenazintambo isekela i-WPS (Ukusetha Okuvikelekile kwe-Wi-Fi)?

↓

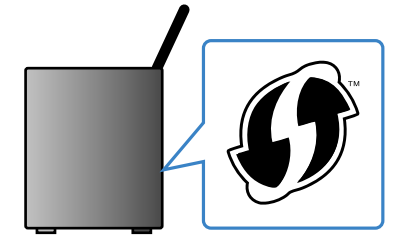
Yebo

↓

Cha noma anginasiqinisekiso

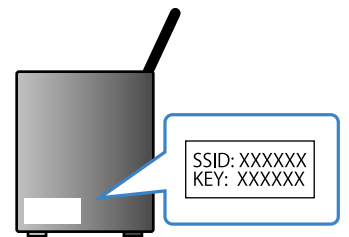
Sebenzisa inkonobho ye-WPS ukuze uxhume

- ① Khetha okuthi [Xhuma nge-WPS] kusuka kusikrini.
- ② Cindezela inkonobho WPS kurutha yakho.



Khetha i-SSID ngokuzenzela

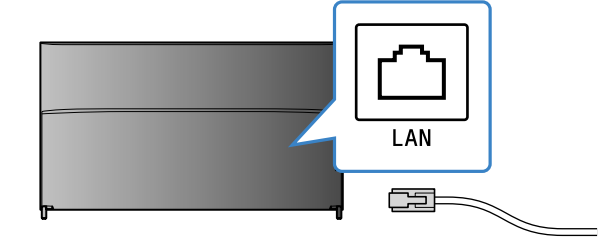
- ① Khetha i-SSID yerutha yakho kusuka kusikrini. I-SSID igama lokukhomba lerutha yakho engenazintambo. Ungakwazi ukuthola i-SSID nephasiwedi (ukhiye wokuphepha) kulebuli elungiselwe kurutha yakho. Ngemininingwane, bheka kumanuwali yakho yemiyalo yerutha yakho.



- ② Faka iphasiwedi yerutha yakho.

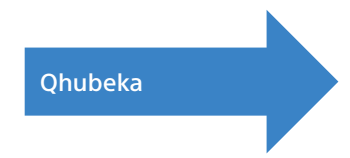
Ukuxhuma ku-inthanethi usebenzisa ikhebuli ye-LAN (inethiwekhi)

1 Xhuma ikhebuli ye-LAN embobeni ye-LAN emuva kwe-TV.



I-TV yakho izoxhuma ngokuzenzakalelayo kumasekhondi angaba ngu-30.

Uma i-TV ingaxhumi ku-inthanethi ngokuzenzakalela
Uma i-TV ingakwazi ukuxhuma ku-inthanethi ngokuzenzakalelayo kuye ngezilungiselelo zerutha yakho. Khetha [Izilungiselelo Zenethiwekhi] phansi kwemenyu Ekhaya ukuze usethe ngokwenza inethiwekhi yakho.



2 Ukungena ngemvume ku-akhawunti ye-Google™ nge-TV yakho

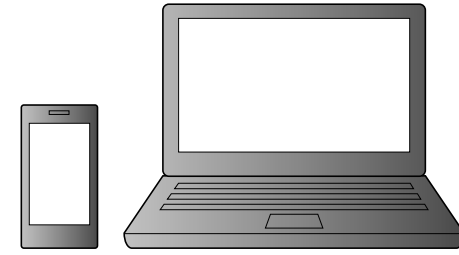
Yeqa lesi sinyathelo uma usuvele ungene ngemvume ku-akhawunti yakho yakwa-Google nge-TV yakho phakathi kokusetha kokuqala.

I-akhawunti ye-Google ikunika ukufinyelela kumasevisi ahluahlukene we-Google. Uma usuvele udale i-akhawunti ye-Google usebenzisa ikhompyutha noma i-smartphone, ungasebenzisa leyo akhawunti ukungena ngemvume.

Ukudala i-akhawunti ye-Google

I-akhawunti ye-Google ayikwazi ukudaleka usebenzisa i-TV. Sebenzisa ikhompyutha noma i-smartphone ukuze udale eyodwa.

- 1 Vakashela le webhusayithi usebenzisa ikhompyutha noma i-smartphone: <http://accounts.google.com/signup>



- 2 Landela imiyalo kusikrini ukuze udale i-akhawunti ye-Google.

Futhi ungasadala i-akhawunti ye-Google phakathi kokusetha kokuqala kwe-TV.

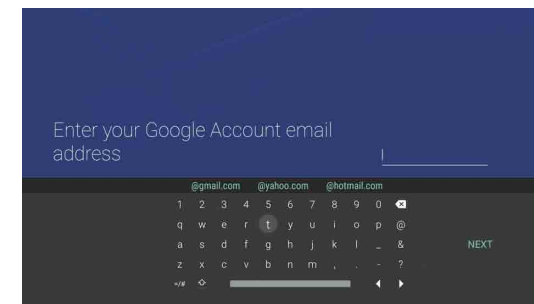
- 1 Xhuma i-TV yakho ku-inthanethi phakathi kokusetha kokuqala kwe-TV.
- 2 Kusikrini [Ngena ngemvume ku-Google] sokusetha kokuqala kwe-TV, khetha okuthi [Sebenzisa ifoni yakho noma ikhompyutha ephathekayo].
- 3 Sebenzisa ikhompyutha noma i-smartphone ukuze uvakashele iwebhusayithi engezansi, bese ulandele imiyalo ekusikrini ukuze udale i-akhawunti ye-Google. g.co/AndroidTV

Ukungena ngemvume ku-akhawunti ye-Google nge-TV yakho

- 1 Khetha i-[Google Play Store] ku-[Izinhlelo] Kumenyu Ekhaya.



- 2 Ngemuva kokuthi kuvele isikrini songena ngemvume, landela imiyalo kusikrini ukuze ungene ngemvume.



Ngemuva kokungena ngemvume nokucindezela inkinobho HOME yerimothi yakho ye-TV, izincomo zakho ziyaboniswa kumenyu Ekhaya.



Isikrini sokungena se-akhawunti ye-Google naso sivele uma uxhuma ku-inthanethi phakathi kokusetha kokuqala, noma uma uvula ezinye izinhlelo.

Ukuphuma

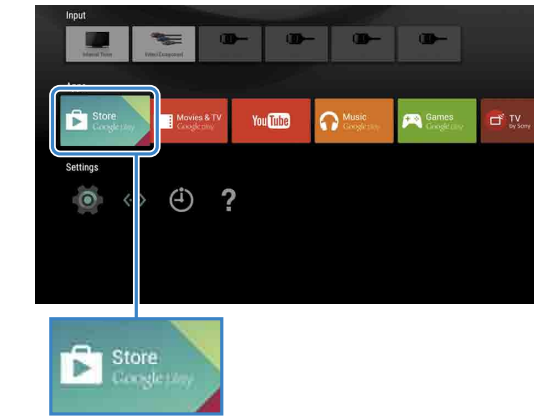
Khetha [Okomuntu siqu] ku-[Izilungiselelo] yekenyu Ekhaya, bese usule i-akhawunti yakho kusuka ku-TV.

3 Ukulanda izinhlelo namageyimu kusuka kusitolo se-Google Play™

Ungalanda izinhlelo nemidlalo kusuka ku-Google Play store ku-TV, njengoba wenza kuma-smartphone wakho namathebhulethi.

Ungalanda kuphela izinhlelo esebenzisana kuphela ne-TV. Ingahluka kusuka kuzinhlelo nemidlalo kuma-smartphone/amathebhulethi.

- 1 Khetha i-[Google Play Store] ku-[Izinhlelo] yemenu Ekhaya.



- 2 Khetha uhlelo noma umdlalo ofuna ukuwulanda, bese ufake uhlelo. Uhlelo luzoqala ukulanda.

Ngemuva kokulanda, uhlelo lufakwa ngokuzenzakalela. Isithonjana salo kumenyu Ekhaya, sikuvumela ukuthi ulivule.

Mayelana nezinhlelo ezikhokhiwe

Kunezinhlelo zamahhala nezinhlelo ezikhokhelwayo ku-Google Play store. Ukuze uthenge uhlelo olukhokhelwayo, ikhodi yekhadi lesiphso se-Google Play ekhokhelwe ngaphambili noma ulwazi lekhadi lesikweletu kuyadingeka. Ungathenga ikhadi lesiphso le-Google Play kusuka kuzitolo ezahluahlukene.

Ukuze usule uhlelo

- 1 Khetha i-[Google Play Store] ku-[Izinhlelo] yemenu Ekhaya.
- 2 Khetha uhlelo oluzosuswa, bese ukhiphe uhlelo.

4 Gebruik van die Sony-internetdiens

Ngokuxhuma ku-inthanethi nokungena ngemvume kusevisi ye-inthanethi ye-Sony, ungasebenzisa amasevisi ahluahlukene njengesevisi yevidiyo ye-inthanethi nesevisi yomculo ye-inthanethi. Ukuze usebenzise lawo masevisi, i-akhawunti ye-SEN iyadingeka. Lawo masevisi ahlwelele ukutholakala ngemuva kwesibuyekezo sesofthiwe entwasahlobo yango-2015.

Ukudala i-akhawunti ye-SEN

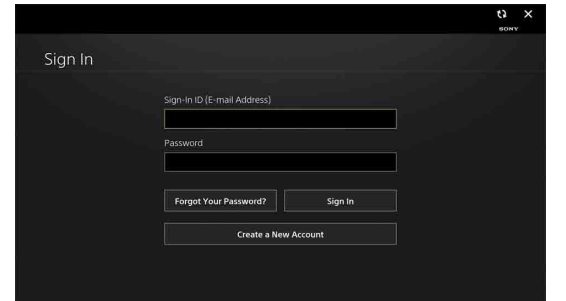
I-akhawunti ye-SEN ayikwazi ukudaleka usebenzisa i-TV. Sebenzisa ikhompyutha noma i-smartphone ukuze udale i-akhawunti yakho.

- 1 Vakashela le webhusayithi usebenzisa ikhompyutha noma i-smartphone: <https://account.sonyentertainmentnetwork.com>

- 2 Landela imiyalo kusikrini ukuze udale i-akhawunti ye-SEN.

Ukungena ngemvume ku-TV nge-akhawunti yakho ye-SEN

- 1 Khetha isithonjana sesevisi ye-inthanethi ye-Sony kumenyu Ekhaya.
- 2 Ngemuva kokuthi kuvele isikrini songena ngemvume, landela imiyalo kusikrini ukuze ungene ngemvume.



Isikrini sokungena se-akhawunti ye-SEN naso sivele uma uxhuma ku-inthanethi phakathi kokusetha kokuqala. Ungangena ngemvume kulesi sikrini, futhi.

- I-Google, Google Play, Android TV nezinye izimpawu zentengiso ze-Google Inc.
- Eminye imisebenzi namasevisi kungahle kungatholakali ngokuya ngesifunda/izwe.
- Ulwazi kule gayidi likhonjwele ukushintsha ngaphandle kwesaziso.
- Die Wi-Fi Protected Setup-identifiseerdermerk is 'n sertifiseringsmerk van Wi-Fi Alliance.