

Camera Control Box  
CCB-WD1

This “Help Guide” explains how to operate the product or a camera connected to the product from a web browser on your computer.

When the product is connected to a camera, you can turn the camera on/off or shoot images with the camera through operations in the web browser. Connecting multiple cameras to multiple camera control boxes allows you to shoot images simultaneously with multiple cameras or apply camera settings to multiple cameras at once.

Refer to the instruction manual for how to connect the product to a camera or a computer.

When you want to operate multiple CCB-WD1 camera control boxes simultaneously, first update the system software (firmware) of all the CCB-WD1 camera control boxes to the latest version.

Update the system software (firmware) of the cameras to be connected to the product to the latest version.

The available functions differ depending on the model of the camera connected to the product.

[Operating the camera from the computer](#)

[Screen layout](#)

[Camera information area](#)

[Control area](#)

[Trademarks](#)

Camera Control Box  
CCB-WD1

## Operating the camera from the computer

---

You can operate the camera from a web browser on the computer by connecting the product to the camera and the computer.

### Recommended computer environment

**OS:**

Windows 7/Windows 8.1/Windows 10  
macOS 10.12 - 10.14

**Web browser:**

Google Chrome/Internet Explorer\*/Safari

\* Version 11.0 or later (as of December 2017)

### 1 Launch a web browser on the computer, and then enter the following URL into the address bar.

URL:

<http://169.254.200.200/>

- The URL can also be found on the bottom of the product.

The screen for operating the camera will appear on the web browser.



### 2 Turn the camera on.

- Make sure that the battery inside the camera is sufficiently charged.
- You can also turn the camera on from the web browser.



---

---

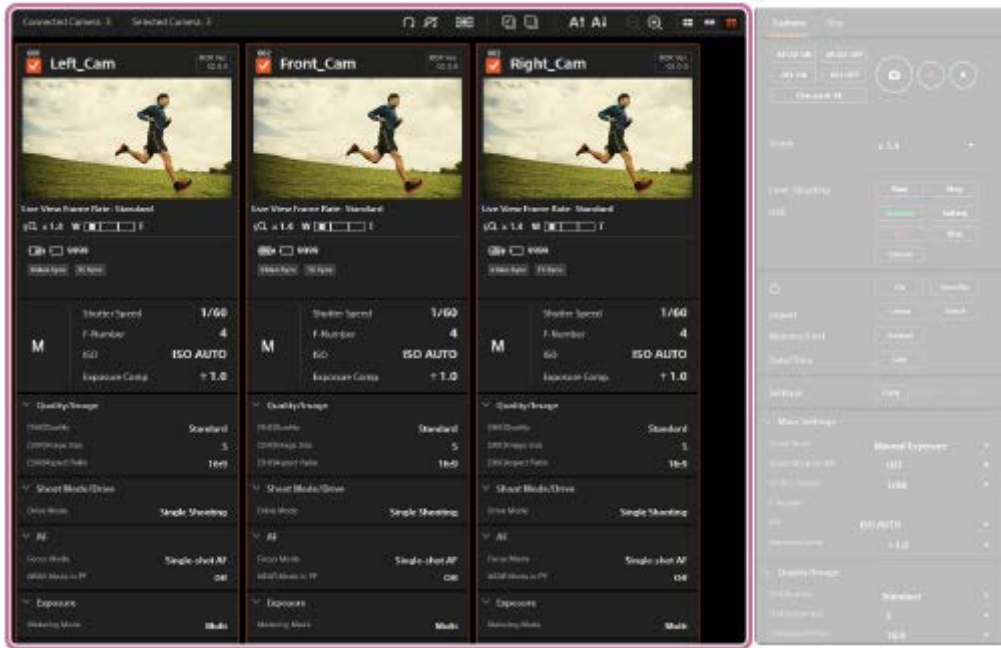
**Related Topic**

- [Camera information area](#)
- [Control area](#)

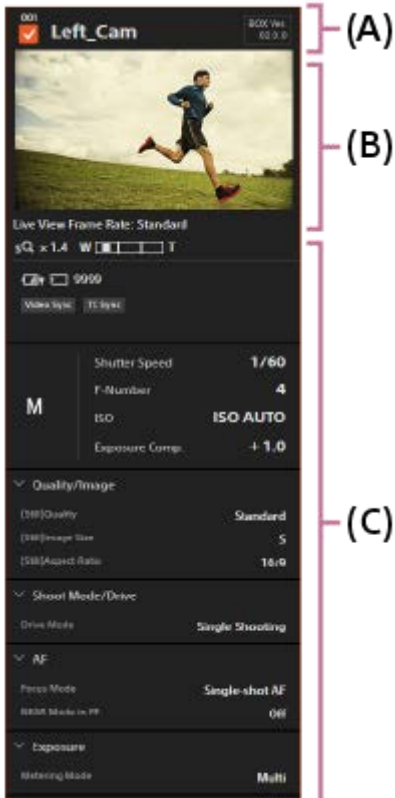
4-735-434-12(1) Copyright 2018 Sony Corporation

## Camera information area

The live views and shooting information for each connected camera are displayed.  
The displayed information differs depending on the model of the camera connected to the product.



### Camera information



## (A): Camera control box information

A temporarily assigned number indicating the product's position in the series, a checkbox to select the camera, the camera label for the connected camera, and the software version of the product are displayed.

### Checkbox

You can switch the selection status by clicking the checkbox.

Connected cameras are unselected initially. Make sure that the checkboxes for the target cameras are checked before you operate or set up the cameras.

### Camera label

You can edit the camera label by clicking it.

The camera's model name and camera ID are displayed as the camera label initially.

## (B): Live view

The live view for the camera is displayed.

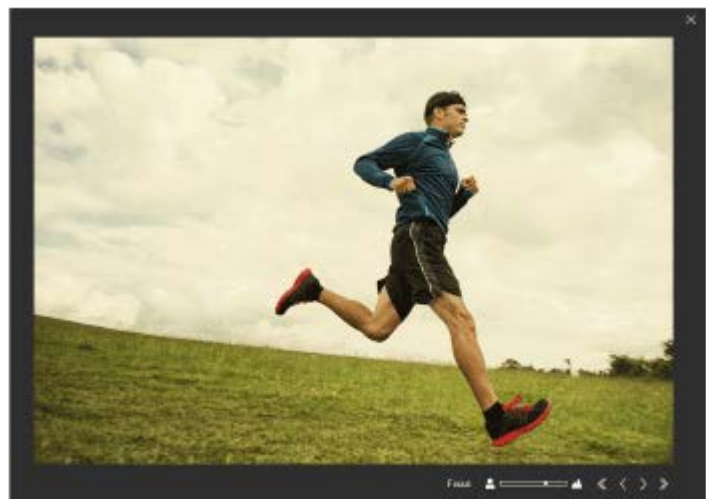
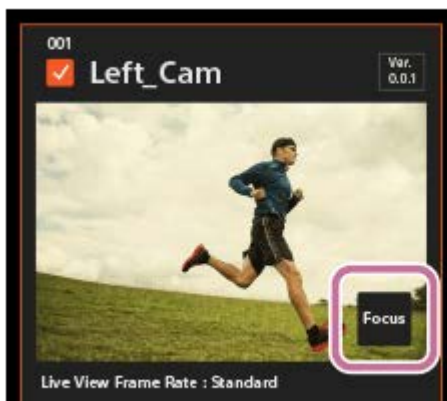
### Live-view frame rate


You can switch between "Low" and "Standard" as the live-view frame rate by double-clicking the live view. The current frame rate of the live view is displayed below the live view.

### Focus button

If you move the cursor over the live view, the "Focus" button will appear.

You can adjust the focus by clicking the "Focus" button (only in the manual focus mode).



Adjust the focus using .

## (C): Shooting information


The shooting information for the camera is displayed.

### Toolbar

You can use the toolbar to display grid lines over the live view or rotate the live view.



#### (Rotate/Reset Rotation)

Rotates the live view of the selected cameras. The rotation can be reset by clicking .

#### (Grid Line)

Displays grid lines over the live view. The type of grid lines changes each time you click this button.

#### (Select All/Cancel All)

Selects all the cameras. / Unselects all the cameras.

### (Ascending Sort/Descending Sort)

Sorts the camera information by camera label in ascending order (  ) or in descending order (  ).

### (Zoom Out/Zoom In)

Increases or decreases the magnification of the live view.

### (Index Display/Main Information Display/Details Display)

Switches the method in which the camera information is displayed.

#### Hint

- You can change the ordering of the camera information by dragging and dropping.

#### Note

- When you change the combination of a camera control box and camera, any edited camera label is deleted. The model name and camera ID of the connected camera are displayed as the camera label.
- Setting the frame rate of the live view to “Standard” for multiple cameras may slow down the computer.

---

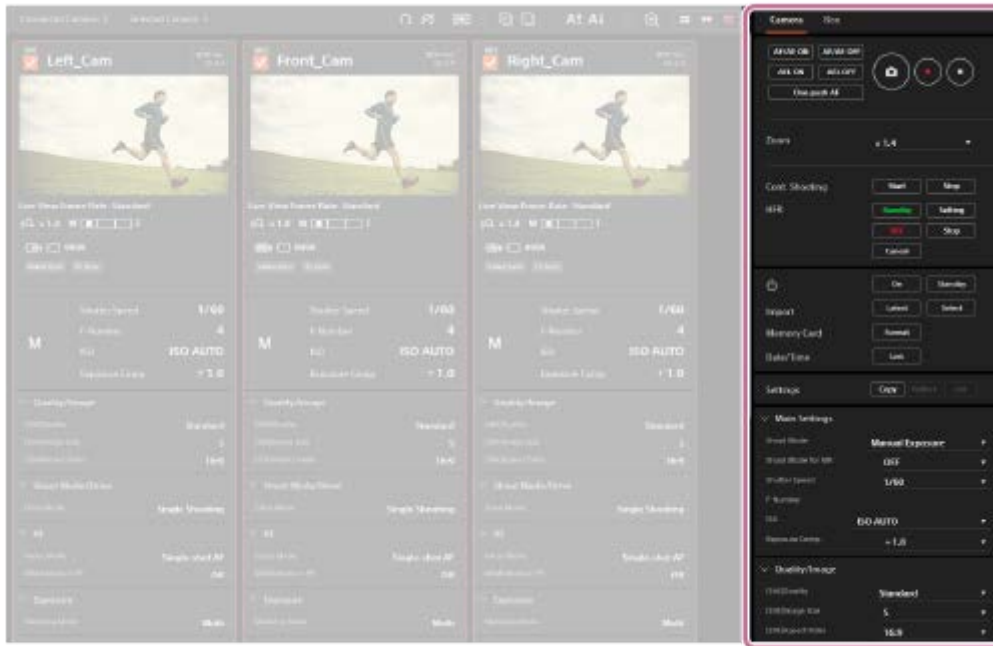
#### Related Topic

- [Control area](#)

Camera Control Box  
CCB-WD1

## Control area

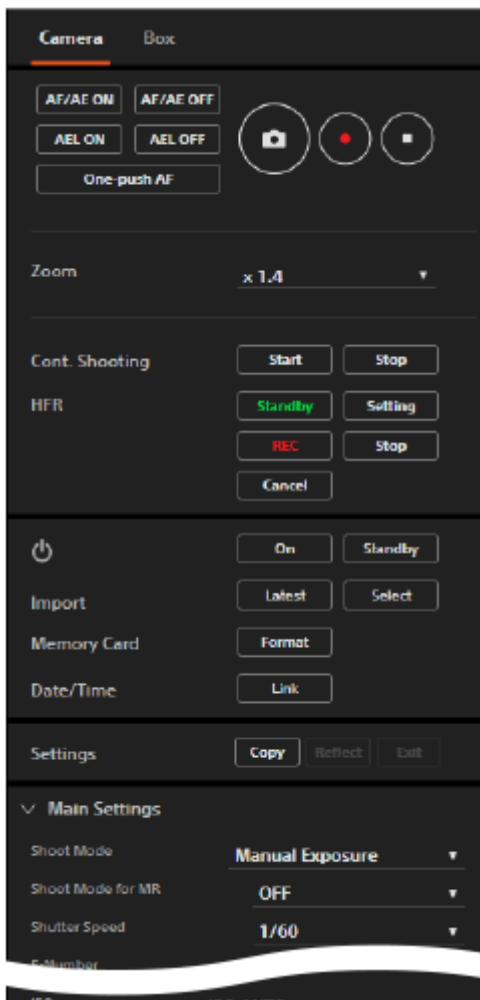
You can operate and configure the camera and the product.  
The available functions differ depending on the model of the camera connected to the product.



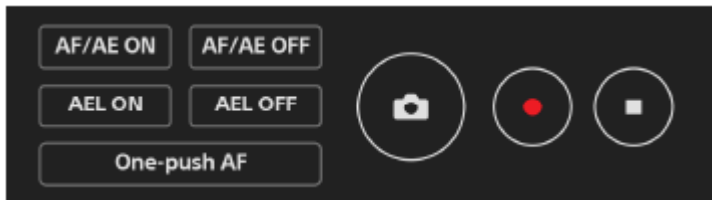
### “Camera” tab

You can perform shooting operations and change the settings for selected cameras using the “Camera” tab.





## Shooting buttons



### AF/AE ON

Performs auto-focusing and locks the exposure.

- During execution of “AF/AE ON,” the message “Executing AF/AE...” appears in the shooting information field (camera information area). You cannot change the settings for the camera while this message is displayed.

### AF/AE OFF

Cancels auto-focusing and exposure locking.

### AEL ON

Locks the exposure.

### AEL OFF

Cancels exposure locking.

### One-push AF

Focuses automatically in the manual focusing mode. You can adjust the focus of multiple cameras simultaneously, and then fine-tune the focus of each camera manually.

- The message “Executing One-push AF...” is displayed in the shooting information field (camera information area) while executing the One-push AF function.
- To exit the One-push AF function, click “One-push AF” again.



Shoots a still image.

- This button works only when the camera is set to the still-image shooting mode.
- Continuous shooting cannot be performed even if you press and hold this button. Use the “Cont. Shooting” buttons to perform continuous shooting.



Starts movie recording.

- This button works only when the camera is set to the movie recording mode.



Stops movie recording.

### Zoom (Zoom scale)



- Select the desired zoom scale using the pull-down menu.

### Cont. Shooting (Continuous shooting)



- These buttons work only when the camera is set to the still-image shooting mode and the drive mode is set to the continuous shooting mode.

#### Start

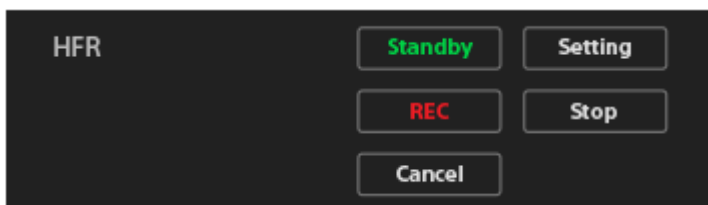
Starts continuous shooting.

- During continuous shooting, the message “Executing Cont. Shooting...” appears in the shooting information field (camera information area). You cannot change the settings for the camera while this message is displayed.

#### Stop

Stops continuous shooting.

### HFR (High-Frame-Rate shooting)



- These buttons work only when the camera is set to the HFR mode.

## Standby

Switches the camera to the shooting standby screen.

## Setting

Switches the camera to the shooting setting screen.

## REC

Starts HFR shooting.

If the timing of recording is set to the start-trigger mode in the camera's HFR shooting settings, capturing (shooting) will start.

If the timing of recording is set to the end-trigger mode or the end-trigger half mode, capturing will end and the camera will start recording the movie to the memory card.

## Stop

If the timing of recording is set to the start-trigger mode in the camera's HFR shooting settings, the camera will stop any HFR shooting in progress.

## Cancel

Cancels recording to the memory card.

## ⏻ (Power)



## On

Turns the cameras on.

## Standby

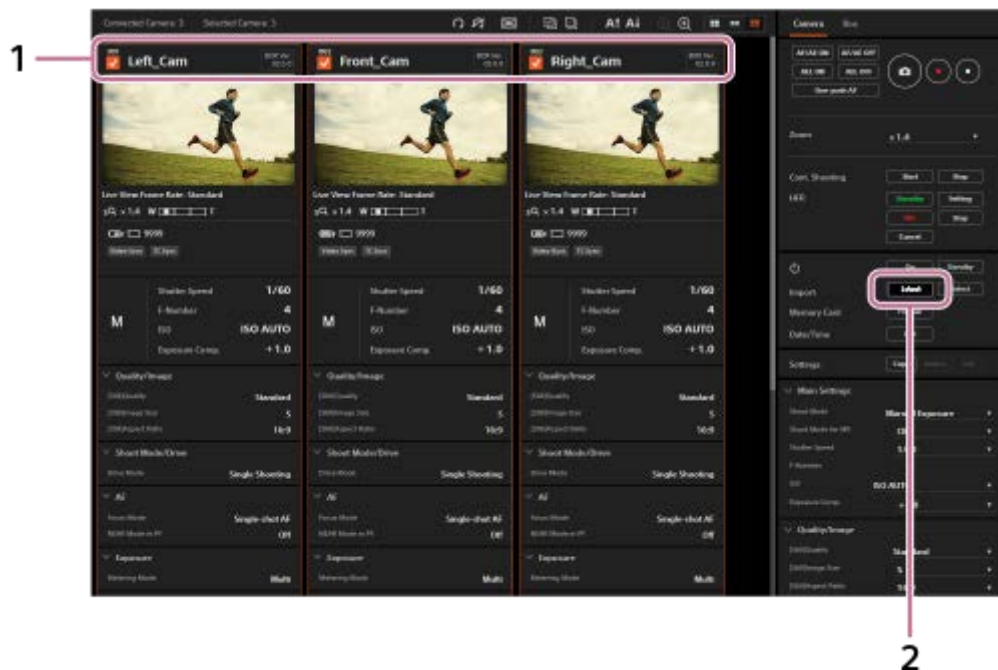
Turns the cameras off.

## Import (File transfer)



## Latest

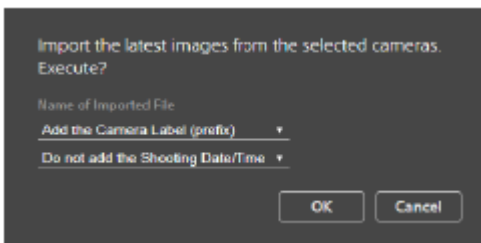
Imports the most recent files from all of the selected cameras to a computer.



1. Add a check mark to the desired cameras.

2. Click "Latest."

The screen for file transfers will appear.

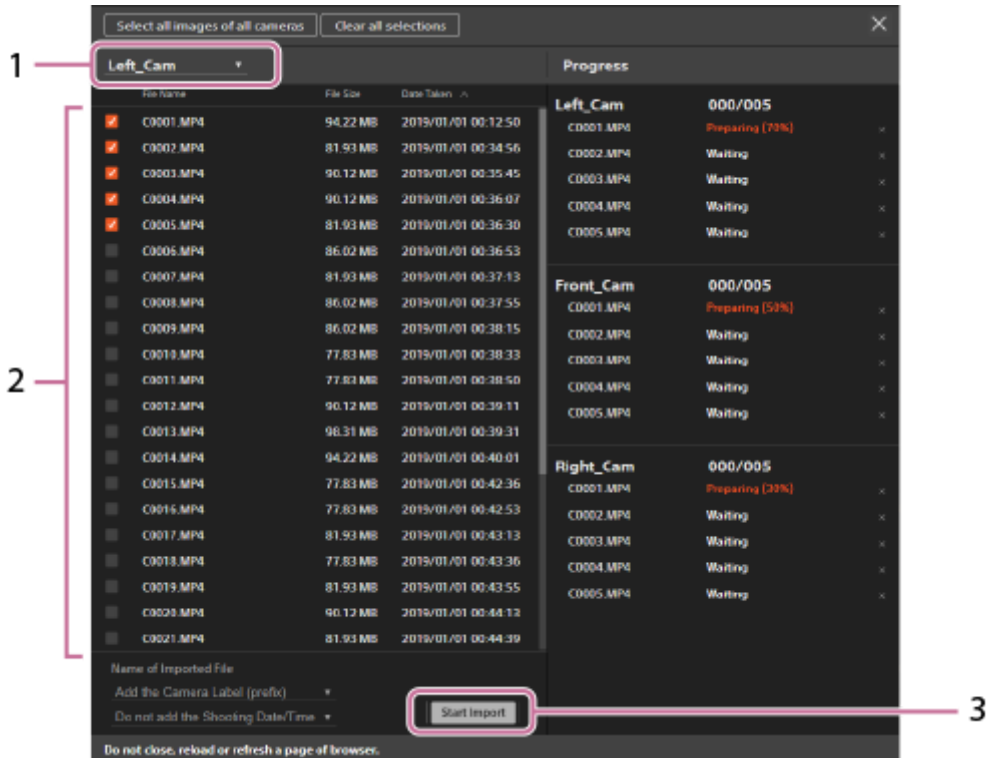


3. Set a file name for the imported files, and then click “OK.”

The most recent files from the selected cameras will be imported to the product, and then transferred to the computer.

**Select**

Select the desired images to be transferred on the file import screen, and then transfer them to a computer.



1. Select the camera.

You can select a camera by its camera label using the pull-down menu at the top of the file import screen. The images shot by the camera that corresponds to the selected camera label will be listed.

2. Select the desired images using the checkboxes on the file import screen.

Click “Select all images of all cameras” on the top of the screen to add a check mark to all the images, or click “Clear all selections” to remove all check marks.

3. Set a file name for the imported files, and then click the “Start Import” button.

The selected images will be imported to the computer.

4. To close the file import screen, click  in the top right of the screen. If  is not displayed, change the display scale of your browser.

**Hint**

- You can specify the file names for the imported files using the pull-down menu before transferring.

**Adding the camera label**

**Add the Camera Label (prefix):**

Imports files with the camera label prefixed to the original file names of the selected images.

**Do not add the Camera Label:**

Imports files without the camera label.

### Adding the shooting date/time

#### Do not add the Shooting Date/Time:

Imports files without the shooting date/time.

#### Add the Shooting Date/Time (prefix):

Imports files with the shooting date/time prefixed to the original file names of the selected images.

#### Add the Shooting Date/Time (suffix):

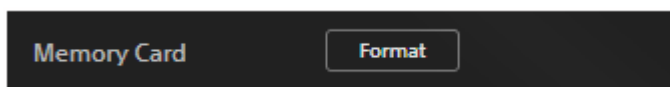
Imports files with the shooting date/time suffixed to the original file names of the selected images.

- When using the “Latest” function, if there are multiple recent files recorded on the same date and time on the camera’s memory card, the files will be selected as follows:
  - If the images are recorded in the RAW&JPEG format, only the JPEG files will be selected.
  - If multiple JPEG images were recorded using continuous shooting, only one of the images will be selected.

### Note

- If the images on the memory card inserted into the camera do not transfer, check the security level settings of the computer.
- If you try to transfer images from a camera connected to a camera control box with the MASTER/CLIENT (Master/Client) switch set to CLIENT, a confirmation screen may not be displayed in the web browser after the data is prepared. In this case, downloads from a domain other than the one displayed may be restricted in the computer’s settings. Check the settings on the computer.
- You cannot transfer files with an individual size of 40 GB or larger.
- When using the “Latest” function, if a movie of 4 GB or more in size is recorded on the camera’s SDHC memory card, it will be divided and only the most recent file will be transferred.

## Memory Card (Memory card)



Formats the memory card inserted into the camera.

## Date/Time (Date and time setting)



You can apply the date, time, and area settings on the computer to the date, time, and area settings on the camera.

## Settings (Copying and applying shooting settings)



### Copy

Copies the shooting settings of the selected camera and displays them in the control area. Only one camera can be selected.

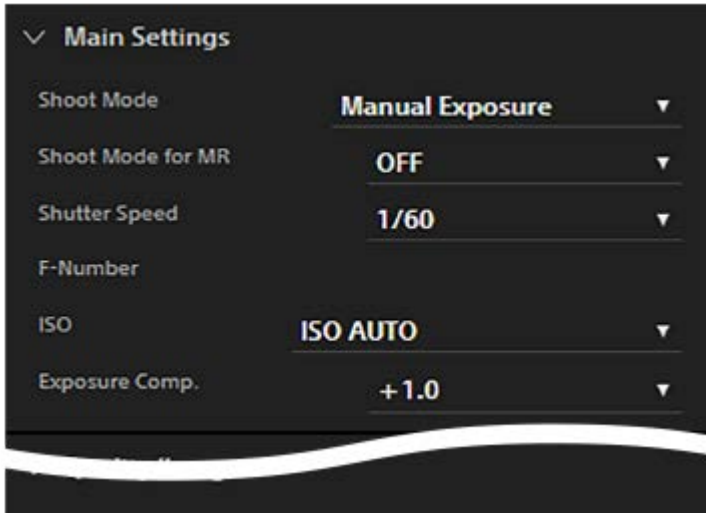
### Reflect

Applies the shooting settings currently displayed in the control area to the selected cameras. Multiple cameras can be selected.


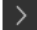
### Exit

Exits the function for copying shooting settings.

## Shooting settings

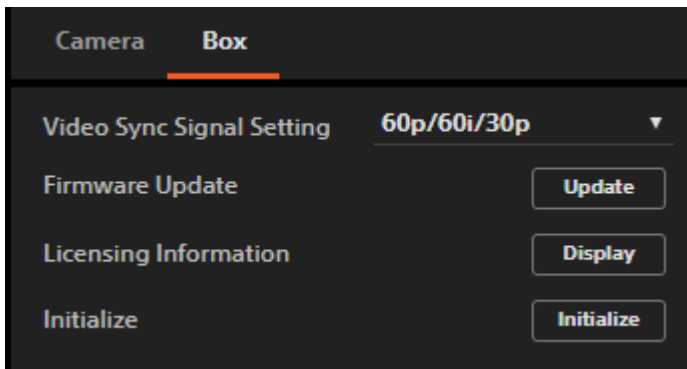


You can change the shooting settings for the cameras. Select the desired setting from the pull-down menu for each setting item.

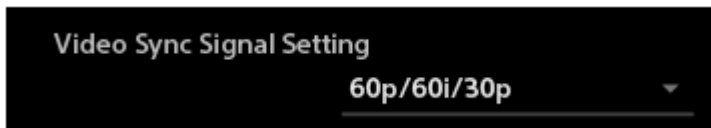
- Click  next to a setting title to collapse the items. Click  next to a setting title to expand it.

### “Box” tab


You can set the synchronization signal, update the software, or initialize all of the connected camera control boxes using the “Box” tab.



### Video Sync Signal Setting (Settings for the video synchronization signal)



You can set the video synchronization signal for synchronizing the connected cameras. Select a frame rate according to the movie recording settings on the cameras.

- “Video Sync” appears in the shooting information field (camera information area) during exposure synchronization. “TC Sync” appears in the shooting information field (camera information area) during time-code synchronization.
- Select MENU →  (Setup) → [TC/UB Settings] → [TC Run] → [Free Run] on each camera when you perform time-code synchronization.
- If you add a camera control box to the network after the date has changed, the time code for the added camera control box will be desynchronized even if you have already performed time-code synchronization. In this case, restart the camera control box whose MASTER/CLIENT (Master/Client) switch is set to MASTER.
- If the selected synchronization signal is different from the recording setting on the camera, synchronization will not be performed.

- When you use the HDMI output function, set the frame rate in the HDMI output settings according to the recording settings on the camera.
- Set the recording setting for HFR shooting to 24p when you are using the cameras in the NTSC mode and want to synchronize them in the HFR shooting mode.
- You cannot perform time-code synchronization when the recording format is set to MP4, or in the HFR shooting mode.

## Firmware Update (Software update)



You can update the software of the camera control box. All of the camera control boxes in the same network can be updated at once.

- Download the update file from the designated website in advance.
- Do not disconnect the cables or shut down the power source while updating. This may cause the product to malfunction.
- The message "Update Warning" indicates that the software (firmware) of the camera control box is already up to date. You do not need to update it.
- For the latest information on software updates, refer to the product website.

## Licensing Information (Licensing information)



You can view the licensing information for the software included in the product.

## Initialize (Initialization)



You can initialize the settings, etc. for the camera control boxes.

- Do not shut down the power source during initialization. This may cause the products to malfunction.

---

---

### Related Topic

- [Camera information area](#)

Camera Control Box  
CCB-WD1

## Trademarks

---

- Microsoft, Windows and Internet Explorer are registered trademarks or trademarks of Microsoft Corporation in the United States and/or other countries.
- Mac and Safari are registered trademarks or trademarks of Apple Inc., registered in the U.S. and other countries.
- Google Chrome is a trademark or registered trademark of Google LLC.

In addition, system and product names used in this manual are, in general, trademarks or registered trademarks of their respective developers or manufacturers. However, the ™ or ® marks may not be used in all cases in this manual.