

A specialized application for HDD AUDIO PLAYER HAP Music Transfer

This Help explains how to use HAP Music Transfer and what you can do with it.
In this Help, Windows screens when the HAP-S1 is connected are used as examples.

This Help is also available as a PDF, which can be downloaded [here](#).

[About the HAP Music Transfer](#)

[Preparations](#)

[Transferring music files](#)

[Deleting music files](#)

[Using menus \(Windows\)](#)

[Using menus \(Mac\)](#)

[Backups](#)

[Error messages](#)

[Dealing with problems](#)

[↑ Go to Page Top](#)

A specialized application for HDD AUDIO PLAYER HAP Music Transfer

Features of HAP Music Transfer

HAP Music Transfer is an application that transfers music files stored in your computer to the HDD AUDIO PLAYER.

The features of this application are as follows:

Selecting multiple folders and batch transfer

You can select multiple folders in which music files are saved on your computer, and then transfer them in a batch to the HDD AUDIO PLAYER.

You can select up to 100 folders.

Supports the transfer of various types of file formats

In addition to widely used file formats (such as MP3), HAP Music Transfer allows you to transfer non-compressed and High-Resolution Audio files such as 192 kHz/24 bit and DSD (Direct Stream Digital) file formats.

Automatic transfer setting

You can set the automatic transfer function to [ON] to start transferring automatically.

If you set the automatic transfer function, it automatically starts transferring music files to the HDD AUDIO PLAYER when new music files are added to the designated folder on your computer.

You can also start transfer manually any time you choose.

A specialized application for HDD AUDIO PLAYER
HAP Music Transfer

Compatible HDD AUDIO PLAYER models

HAP Music Transfer is compatible with the following HDD AUDIO PLAYER models.

Compatible models

HAP-Z1ES, HAP-S1
(as of May, 2022)

Related Topic

- [System requirements](#)

[↑ Go to Page Top](#)

4-472-859-12(5)
Copyright 2013 Sony Corporation

A specialized application for HDD AUDIO PLAYER
HAP Music Transfer

Trademarks

- Microsoft, Windows, and Windows Vista are trademarks of the Microsoft group of companies.
- Mac, macOS and OS X are trademarks of Apple Inc., registered in the U.S. and other countries and regions.

All other trademarks and registered trademarks are trademarks or registered trademarks of their respective holders. In this Help, TM and ® marks are not specified.

4-472-859-12(5)

Copyright 2013 Sony Corporation

A specialized application for HDD AUDIO PLAYER HAP Music Transfer

System requirements

HAP Music Transfer can be used in the following system environment.

OS

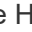
- Windows 11 Home
 - Windows 11 Pro
 - Windows 10 Home
 - Windows 10 Pro
 - Windows 8.1
 - Windows 8
 - Windows 8 Pro
 - Windows 7 Starter Service Pack 1 or later
 - Windows 7 Home Basic Service Pack 1 or later
 - Windows 7 Home Premium Service Pack 1 or later
 - Windows 7 Professional Service Pack 1 or later
 - Windows 7 Ultimate Service Pack 1 or later
 - Windows Vista Home Basic Service Pack 2 or later
 - Windows Vista Home Premium Service Pack 2 or later
 - Windows Vista Business Service Pack 2 or later
 - Windows Vista Ultimate Service Pack 2 or later
-
- macOS Monterey 12 (*)
 - macOS Big Sur 11 (*)
 - macOS Catalina 10.15 (*)
 - macOS Mojave 10.14 (*)
 - macOS High Sierra 10.13 (*)
 - macOS Sierra 10.12 (*)
 - OS X 10.11 El Capitan (*)
 - OS X 10.10 Yosemite (*)
 - OS X 10.9 Mavericks (*)

* Intel CPU models and M1 chip models are supported.

Note

- For users of macOS 11.3.1 or later, we have confirmed that transferring files by using HAP Music Transfer is not possible while the HDD AUDIO PLAYER is in the default state.
First, confirm in advance that the HDD AUDIO PLAYER and HAP Music Transfer are running the latest versions, and then use the following procedure to change the SMB version of the HDD AUDIO PLAYER.

Setting [SMB Version] through [Special Mode] is possible if the software version of the HDD AUDIO PLAYER is later than “18777R”.

1. When the HDD AUDIO PLAYER is in the standby, press the  (Power) button while pressing the HOME button.
2. The Special Mode screen appears, select [SMB Version], and then apply the settings.
3. Change from [1.0 - 3.1.1] (initial value) to [1.0], and then apply the settings.
The screen returns to the Special Mode screen.
4. Select [Restart], and then apply the settings.

After restarting the HDD AUDIO PLAYER, test whether you can use HAP Music Transfer to transfer a file.

These settings are retained even after turning off the power to the HDD AUDIO PLAYER.

Screen resolution

1,024 x 768 pixels or higher

Note

- One of the above operating systems should be installed by default. Upgraded operating systems and multi-boot environments are not supported.
- We do not guarantee operation for all computers even if they meet the above system requirements. Furthermore, the following systems are not supported:
 - Personally constructed computers or operating systems
 - Upgraded operating systems
 - Multi-boot environments
 - Multi-monitor environments
- Be sure to update your operating system to the latest version to ensure the security of your computer. Please note that the update may change the settings on the operating system and affect the connection with the HDD AUDIO PLAYER.
For details on updates, please consult Microsoft Corporation for Windows, or Apple Inc. for macOS.

Regarding OS that are no longer supported by Microsoft

Support for problems and security measures for our hardware/software products will also be ending. Continuing to use our products in these OS environments may cause devices and software to function abnormally, or may cause problems, such as that security cannot be assured. Check the support information provided by Microsoft Corporation.

4-472-859-12(5)

Copyright 2013 Sony Corporation

A specialized application for HDD AUDIO PLAYER HAP Music Transfer

Installing HAP Music Transfer

First, you need to install HAP Music Transfer on a computer on which music files are stored.

1. Download “HAP Music Transfer” from the following Sony service site.

- For the USA and Canada: <https://www.sony.com/am/support>
- For Europe: <https://www.sony.eu/support>
- For Asia Pacific: <https://www.sony-asia.com/support>
- For China: <https://service.sony.com.cn>

For details on how to install the application, refer to one of the websites listed above.

Hint

- When you install HAP Music Transfer, the HAP Music Transfer icon appears on the desktop and the start menu for Windows.
- To uninstall the application from Windows, use “Programs and Features” in the Control Panel, or “Apps & features” in the Settings.

Related Topic

- [System requirements](#)

 [Go to Page Top](#)

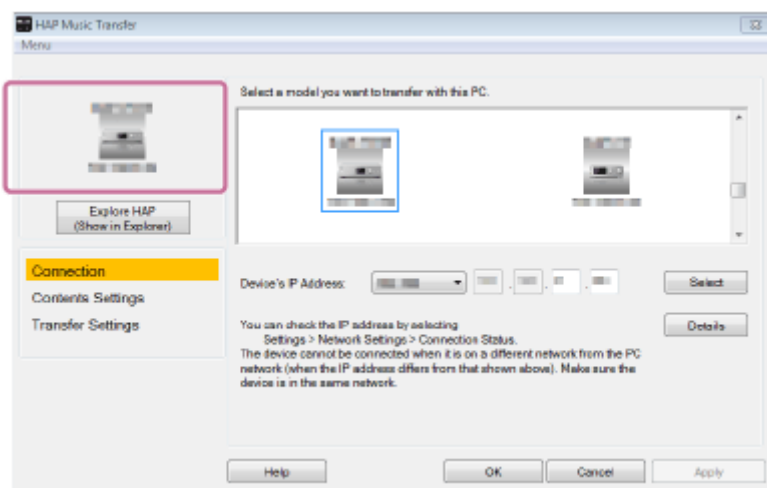
A specialized application for HDD AUDIO PLAYER HAP Music Transfer

Checking the connection status of your computer and the HDD AUDIO PLAYER

Confirm whether your computer and the HDD AUDIO PLAYER are connected to the same network as follows.

1. Start HAP Music Transfer and check that the name of the HDD AUDIO PLAYER is shown on the top left of the display.

The icon of the currently connected HDD AUDIO PLAYER appears. The name of the HDD AUDIO PLAYER appears above the icon and the IP address appears below the icon.



Hint



- If the HDD AUDIO PLAYER is not displayed in the Connection window, enter the IP address of the HDD AUDIO PLAYER, and then click the [Select] button. To check the IP address of the HDD AUDIO PLAYER, select [Settings] - [Network Settings] - [View Network Status] on the Home screen.
- Turning off your router may change the IP address of the HDD AUDIO PLAYER. In this case, check the IP address again.

Related Topic

- [The desired HDD AUDIO PLAYER is not displayed in the Connection window.](#)

A specialized application for HDD AUDIO PLAYER HAP Music Transfer

Step 1. Starting HAP Music Transfer

1. Start HAP Music Transfer with  (Windows) or  (Mac) (the HAP Music Transfer icon) on your computer desktop.

HAP Music Transfer starts.

When you start the HAP Music Transfer for the first time, the wizard starts (the Connection window appears first).

When you subsequently start HAP Music Transfer, the Connection window appears.

Note

- If the computer is not connected to the HDD AUDIO PLAYER, such as when you start HAP Music Transfer for the first time, you cannot select the Contents Settings window or the Transfer Settings window.

Hint

- You can quit HAP Music Transfer using the following operations.
 - Windows: Select [Menu] - [Exit] from the menu bar, or select [Exit] the context menu from the task tray icon.
 - Mac: Select [HAP Music Transfer] - [Quit HAP Music Transfer] from the menu bar, or select [Quit] in the context menu from the Dock.
- If you turn off your computer while HAP Music Transfer is open, it automatically starts the next time you turn on the computer.

Related Topic

- [Step 2. Transferring music files stored on the computer to the HDD AUDIO PLAYER](#)
- [Using the system menu \(Windows only\)](#)
- [Using menus from the menu bar \(Mac only\)](#)

 [Go to Page Top](#)

A specialized application for HDD AUDIO PLAYER HAP Music Transfer

Step 2. Transferring music files stored on the computer to the HDD AUDIO PLAYER

When you first start HAP Music Transfer, a setup wizard starts. Follow the steps below to transfer music files.

When you start HAP Music Transfer subsequently, the steps below will differ since the wizard does not appear. Set up the Connection window, Contents Settings window and Transfer Settings window manually to transfer the file(s).

1. Start HAP Music Transfer.

The setup wizard starts and the Connection window appears.

2. Select the HDD AUDIO PLAYER you want to connect to, and then select [Next] (Windows) or [Continue] (Mac).

The Contents Settings window appears.

3. Select [Add] to select the folder in which music files are stored, and then select [OK] (Windows) or [Add folders] (Mac).

File formats that are supported by the connected HDD AUDIO PLAYER are listed at the bottom of the Contents Settings window.

4. Check the check boxes of file formats you want to transfer, and then select [Next] (Windows) or [Continue] (Mac).

The Transfer Settings window appears.

5. Select [Start] beside [Manual Transfer].

A progress bar appears and the file transfer starts.

When the file transfer is completed, select [Finish Wizard]. The window changes back to the Connection window.

Music file management on the HDD AUDIO PLAYER

The HDD AUDIO PLAYER registers music information obtained from music files when you transfer them to the HDD AUDIO PLAYER.

The HDD AUDIO PLAYER utilizes music information about the album name, album artist name, album art image, track name, track artist name, track number and track genre from each music file.

The method of embedding music information differs depending on the music file management software or tag editing software.

Music information is classified on the list screen of the HDD AUDIO PLAYER as follows.

Genres : Displays the track genre in [Genres].

Artists : Displays the track artist name in [Artists].

Albums : Displays information composed of the album name and album artist name in [Albums].

Tracks : Displays the track name in [Tracks].

Note

- Some music file management software only manages the music information in the database on your computer and does not embed any music information to the music files. In other cases, some music file management software embeds part of the music information to the music files.
- The method of embedding music information differs depending on the music file format in some music file management software.
- Some music file management software uses a different method from the HDD AUDIO PLAYER to construct an album from multiple tracks.

Hint

- You can transfer music files automatically by setting [Auto Transfer] to [ON] in the Transfer Settings window.
- When transferring music files to the HDD AUDIO PLAYER for the first time, it is recommended that you connect using a wired LAN connection, as doing so allows a large number of files to be transferred at higher speed.
- You can select whether to exit the wizard and start transferring or to exit the wizard without transferring.

Related Topic

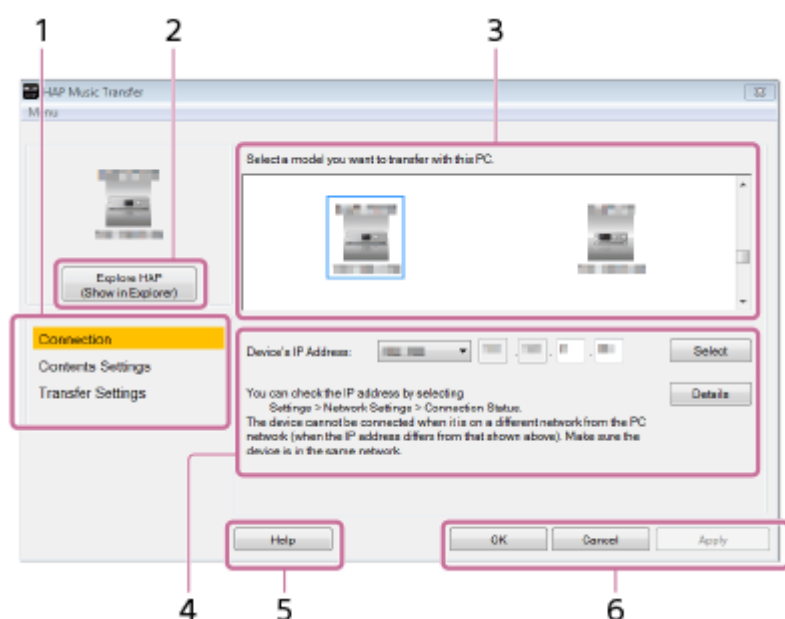
- [Descriptions and functions of the Connection window](#)
- [Descriptions and functions of the Contents Settings window](#)
- [Descriptions and functions of the Transfer Settings window](#)

 [Go to Page Top](#)

A specialized application for HDD AUDIO PLAYER HAP Music Transfer

Descriptions and functions of the Connection window

Select the HDD AUDIO PLAYER that you want to connect to in the Connection window.



1. Menu window selection area

Select which window to display.

Menu items are highlighted according to the selected window.

2. Explore HAP

The Explorer window (for Windows) or the Finder (for Mac) opens and displays the content stored in the hard disk drive of the HDD AUDIO PLAYER.

3. HDD AUDIO PLAYER selection area

The HDD AUDIO PLAYER models that are connected to the same network as the computer appear in this area.

Select the HDD AUDIO PLAYER you want to connect to.

You can check the icons of the HDD AUDIO PLAYER models and their names and IP addresses.

4. IP address verification area

You can check and directly enter the IP address of the HDD AUDIO PLAYER.

Directions on how to check the IP address of your HDD AUDIO PLAYER and notes are shown in this area.

5. Help

Opens the web browser and displays the website which links to the HAP Music Transfer Help. Select the HAP Music Transfer Help.

6. Operation buttons

Windows:

- [OK]: Enters the settings and closes the window.
- [Cancel]: Cancels the settings made on the screen and closes the window.
- [Apply]: Enters the settings. The window remains open.

Mac:

- [Apply]: Enters the settings. The window remains open.
- [Close]: Enters the settings and closes the window.
- [Quit]: Enters the settings and quits HAP Music Transfer.

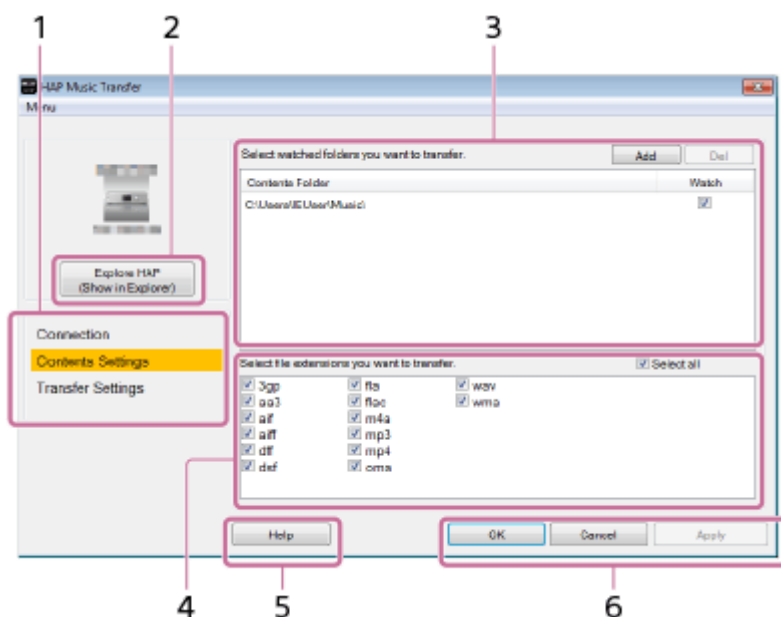
4-472-859-12(5)

Copyright 2013 Sony Corporation

A specialized application for HDD AUDIO PLAYER HAP Music Transfer

Descriptions and functions of the Contents Settings window

You can select the folder in which music files are stored in your computer and the file formats of the music files to be transferred in the Contents Settings window.



1. Menu window selection area

Select which window to display.

Menu items are highlighted according to the selected window.

2. Explore HAP

The Explorer window (for Windows) or the Finder (for Mac) opens and displays the content stored in the hard disk drive of the HDD AUDIO PLAYER.

3. Folder selection area

Check the check boxes of folders on your computer in which music files that you want to transfer are stored.

Select [Add] to add target folders in your computer.

Select [Del] to delete a folder from the screen so that it is removed from the transfer targets.

Check the [Watch] check boxes to set the folders as transfer target folders.

4. File format selection area

Check the check boxes of file format extensions that you want to transfer.

Unless you have reason not to, check the [Select all] check box and transfer files of all file formats.

For details on the compatible file formats, refer to the HDD AUDIO PLAYER Help Guide.

5. Help

Opens the web browser and displays the website which links to the HAP Music Transfer Help. Select the HAP Music Transfer Help.

6. Operation buttons

Windows:

- [OK]: Enters the settings and closes the window.
- [Cancel]: Cancels the settings made on the screen and closes the window.
- [Apply]: Enters the settings. The window remains open.

Mac:

- [Apply]: Enters the settings. The window remains open.
- [Close]: Enters the settings and closes the window.
- [Quit]: Enters the settings and quits HAP Music Transfer.

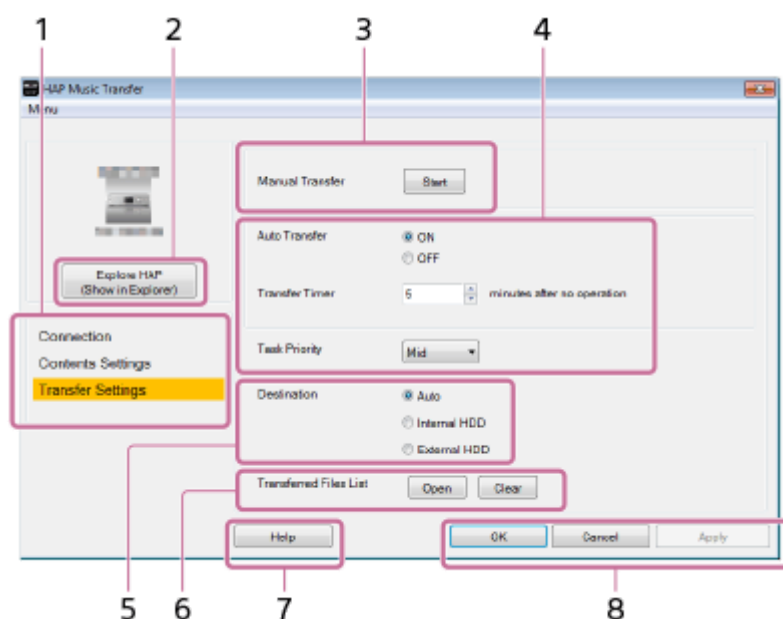
4-472-859-12(5)

Copyright 2013 Sony Corporation

A specialized application for HDD AUDIO PLAYER HAP Music Transfer

Descriptions and functions of the Transfer Settings window

You can select the transfer method (manual/automatic), the hard disk drive on the HDD AUDIO PLAYER for the music files to be transferred to and check the transfer history in the Transfer Settings window.



1. Menu window selection area

Select which window to display.

Menu items are highlighted according to the selected window.

2. Explore HAP

The Explorer window (for Windows) or the Finder (for Mac) opens and displays the content stored in the hard disk drive of the HDD AUDIO PLAYER.

3. Manual transfer operation area

Set [Manual Transfer] to [Start] to immediately start transferring music files.

When the transfer starts, the progress bar, total number of files to be transferred and number of transferred files appear on the screen.

4. Automatic transfer setup area

Set [Auto Transfer] to [ON] and set the desired time in the [Transfer Timer] parameter.

If your computer is not operated for the amount of time set in [Transfer Timer], HAP Music Transfer starts transferring music files to the HDD AUDIO PLAYER automatically.

[Task Priority] sets the priority for the HAP Music Transfer process within the software/hardware processes performed automatically by your computer. (This function is available for Windows only.)

5. Hard disk drive selection area

Select [Destination] to select the hard disk drive on the HDD AUDIO PLAYER. Select the destination from [Auto], [Internal HDD], or [External HDD].

If you select [Auto], the music files are transferred to the internal hard disk drive first, and then are automatically transferred to the external hard disk drive when the internal hard disk drive becomes full.

6. Transfer history confirmation area

Select [Open] from [Transferred Files List] to check the transfer history of the music files transferred to the currently selected HDD AUDIO PLAYER.

You can erase the history by selecting [Clear]. When the transfer history is erased, all files that are included in the folders you select will be transferred to the HDD AUDIO PLAYER the next time the application transfers music files.

Erase the transfer history when you want to transfer all music files again.

7. Help

Opens the web browser and displays the website which links to the HAP Music Transfer Help. Select the HAP Music Transfer Help.

8. Operation buttons

Windows:

- [OK]: Enters the settings and closes the window.
- [Cancel]: Cancels the settings made on the screen and closes the window.
- [Apply]: Enters the settings. The window remains open.

Mac:

- [Apply]: Enters the settings. The window remains open.
- [Close]: Enters the settings and closes the window.
- [Quit]: Enters the settings and quits HAP Music Transfer.

4-472-859-12(5)

Copyright 2013 Sony Corporation

A specialized application for HDD AUDIO PLAYER HAP Music Transfer

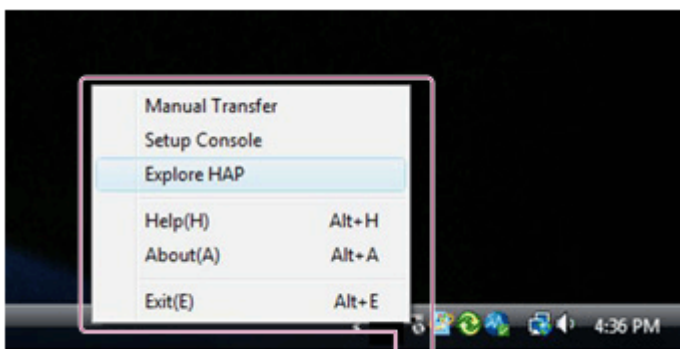
Deleting music files from the HDD AUDIO PLAYER

You can delete music files from the HDD AUDIO PLAYER using the HAP Music Transfer application.

1. Perform one of the following operations.

- For Windows:

Select [Explore HAP] from  (the HAP Music Transfer icon) on the task tray of your computer.



- For Mac:

Select [Explore HAP] from  (the HAP Music Transfer icon) on the Dock of your computer.



The Explorer window (for Windows) or the Finder (for Mac) opens and icon(s) of the available shared folder(s) appear. ([HAP_Internal] appears for the internal hard disk drive and [HAP_External] appears for the external hard disk drive if one is connected.)

2. Select [HAP_Internal] (to select the internal hard disk drive) or [HAP_External] (to select the external hard disk drive), and then keep selecting folders until you reach the folder that contains the music files you want to delete.
3. Delete the music files.

Note

- You can delete sample files that are pre-installed in the HDD AUDIO PLAYER. If you perform the Factory Reset function on the HDD AUDIO PLAYER, the sample files will be restored.
- Do not transfer music files using HAP Music Transfer on your computer while deleting music files in Explorer (for Windows) or in the Finder (for Mac).
- Do not transfer music files from your smartphone or tablet while deleting music files using Explorer (for Windows) or the Finder (for Mac).

4-472-859-12(5)

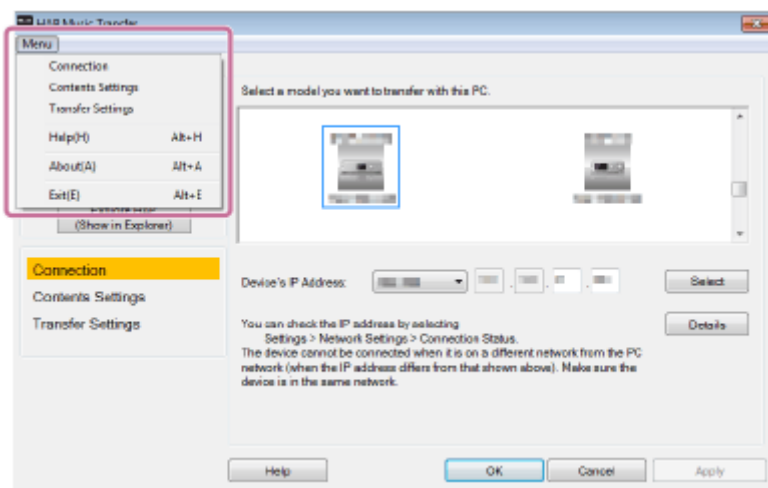
Copyright 2013 Sony Corporation

A specialized application for HDD AUDIO PLAYER HAP Music Transfer

Using the system menu (Windows only)

You can use the system menu to access the HAP Music Transfer Help and find the HAP Music Transfer software version. You can select the system menu from any of the Connection, Contents Settings or Transfer Settings windows.

1. Select [Menu] in the Connection, Contents Settings or Transfer Settings window.
The system menu appears.



2. Select the desired item.

Descriptions of displayed items

The following items can be selected.

Connection:

Displays the Connection window.

Contents Settings:

Displays the Contents Settings window.

Transfer Settings:

Displays the Transfer Settings window.

Help:

Opens the web browser and displays the website which links to the HAP Music Transfer Help. Select the HAP Music Transfer Help.

About:

Shows the current version and the copyright year of HAP Music Transfer.

Exit:

Quits HAP Music Transfer.

4-472-859-12(5)


Copyright 2013 Sony Corporation


SONY

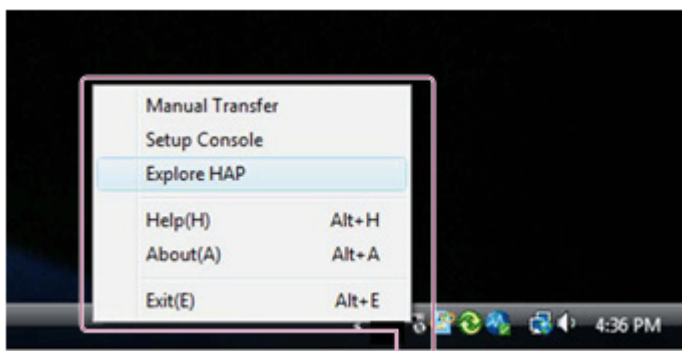
Help

A specialized application for HDD AUDIO PLAYER HAP Music Transfer

Using the context menu for the HAP Music Transfer task tray icon (Windows only)

You can use the context menu, which can be displayed from  (the HAP Music Transfer icon) in the task tray, to start file transfer, open the HAP Music Transfer operation window, open the explorer and display the hard disk drive of the HDD AUDIO PLAYER, and more.

1. Right-click (tap and hold on the touch panel)  in the task tray.
The context menu appears.



2. Select the desired item.

Descriptions of the displayed item

The following items can be selected.

Manual Transfer/Stop Transferring:

Select [Manual Transfer] to start the transfer of music files immediately.

[Stop Transferring] appears during the transfer, and can be used to stop the transfer.

Setup Console:

Opens a HAP Music Transfer window.

Explore HAP:

Opens the explorer and displays the content stored in the hard disk drive of the HDD AUDIO PLAYER.

Help:

Opens the web browser and displays the website which links to the HAP Music Transfer Help. Select the HAP Music Transfer Help.




About:

Shows the current version and the copyright year of HAP Music Transfer.

Exit:

Quits HAP Music Transfer.

Hint

- The HAP Music Transfer icon differs depending on the status of HAP Music Transfer.
 -  : HAP Music Transfer is not transferring music files (stopped).
 -  : HAP Music Transfer is standing by for automatic transfer (Transfer Timer has started).
 -  : HAP Music Transfer is transferring music files.

4-472-859-12(5)

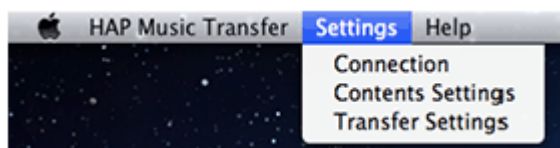
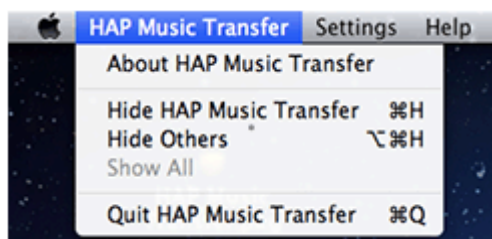
Copyright 2013 Sony Corporation

A specialized application for HDD AUDIO PLAYER HAP Music Transfer

Using menus from the menu bar (Mac only)

You can use the menu bar to find the HAP Music Transfer software version, access the HAP Music Transfer Help, and more.

1. Select [HAP Music Transfer], [Settings] or [Help] in the menu bar.
The following menus appear.



2. Select the desired item.

Descriptions of “HAP Music Transfer” menu

The following items can be selected.

About HAP Music Transfer:

Shows the current version and the copyright year of HAP Music Transfer.

Hide HAP Music Transfer:

Hides the HAP Music Transfer Window.

Hide Others:

Hides the windows of other applications currently running on the computer.

Show All:

Shows all windows of all applications currently running on the computer (including HAP Music Transfer).

Quit HAP Music Transfer:

Quits HAP Music Transfer.

Descriptions of “Settings” menu

The following items can be selected.

Connection:

Displays the Connection window.

Contents Settings:

Displays the Contents Settings window.

Transfer Settings:

Displays the Transfer Settings window.

Descriptions of “Help” menu

The following item can be selected.

HAP Music Transfer Help:

Opens the web browser and displays the website which links to the HAP Music Transfer Help. Select the HAP Music Transfer Help.

4-472-859-12(5)


Copyright 2013 Sony Corporation

SONY

Help

A specialized application for HDD AUDIO PLAYER HAP Music Transfer

Using the context menu for the HAP Music Transfer icon on the Dock (Mac only)

You can use the context menu, which can be displayed from  (the HAP Music Transfer icon) in the Dock, to start file transfer, open the HAP Music Transfer operation window, open the Finder and display the hard disk drive of the HDD AUDIO PLAYER, and more.

1. Click and hold  on the Dock, or click  while holding the Ctrl key on the keyboard.
The context menu appears.



2. Select the desired item.

Descriptions of the displayed item

The following items can be selected.

Manual Transfer/Stop Transferring:

Select [Manual Transfer] to start the transfer of music files immediately.

[Stop Transferring] appears during the transfer, and can be used to stop the transfer.

Setup Console:

Opens a HAP Music Transfer window.

Explore HAP:

Opens the Finder and displays the content stored in the hard disk drive of the HDD AUDIO PLAYER.

Options:

Displays system menu of your Mac.

Show All Windows:

Displays all windows that are running on the computer, including the HAP Music Transfer window.




Hide:

Hides the HAP Music Transfer window.

Quit:

Quits HAP Music Transfer.

Hint

- The HAP Music Transfer icon differs depending on the status of HAP Music Transfer.
 - : HAP Music Transfer is not transferring music files (stopped).
 - : HAP Music Transfer is standing by for automatic transfer (Transfer Timer has started).
 - : HAP Music Transfer is transferring music files.

4-472-859-12(5)

Copyright 2013 Sony Corporation

A specialized application for HDD AUDIO PLAYER HAP Music Transfer

Backing up data

We recommend you arbitrarily have a backup of contents stored on the hard disk drive of the HDD AUDIO PLAYER, which are copies of contents on your computer.

If you do not have the original data on your computer anymore, we recommend you copy the contents in the hard disk drive of the HDD AUDIO PLAYER to your computer to have a backup.

Make sure you have a back up before sending the HDD AUDIO PLAYER for repair.

For details on how to copy music files from the HDD AUDIO PLAYER to your computer as a backup, check the topics listed as related topics below.

Related Topic

- [Backing up music files in the HDD AUDIO PLAYER to your computer \(for Windows\)](#)
- [Backing up music files in the HDD AUDIO PLAYER to your computer \(for Mac\)](#)
- [Returning backup music files from your computer to the HDD AUDIO PLAYER \(for Windows\)](#)
- [Returning backup music files from your computer to the HDD AUDIO PLAYER \(for Mac\)](#)


[↑ Go to Page Top](#)

A specialized application for HDD AUDIO PLAYER HAP Music Transfer

Backing up music files in the HDD AUDIO PLAYER to your computer (for Windows)

It is recommended that you copy music files in the HDD AUDIO PLAYER to your computer as a backup before you bring the HDD AUDIO PLAYER for repair or if you do not have the original music files in your computer.

You need to use the HAP Music Transfer application installed in your computer for the backup. Make sure that the HDD AUDIO PLAYER is turned on.

1. Open the context menu of HAP Music Transfer from  (the HAP Music Transfer icon) on the task tray of your computer and then select [Explore HAP].
The Explorer window opens and icon(s) of the available shared folder(s) appear. ([HAP_Internal] appears for the internal hard disk drive and [HAP_External] appears for the external hard disk drive if one is connected.)
2. Select [HAP_Internal] (to select the internal hard disk drive) or [HAP_External] (to select the external hard disk drive), and then keep selecting folders until you reach the folder that contains the music files you want to back up.
3. Copy the music files from the HDD AUDIO PLAYER to the desired folder in your computer by drag and drop.

Note

- Do not transfer music files while backing up music files in Explorer using HAP Music Transfer.
- Do not transfer music files from your smartphone or tablet while backing up music files in Explorer.
- Set the [Auto Standby] function of the HDD AUDIO PLAYER to [Off] when you make a backup.

Hint

- If you want to back up all of the content in the internal or external hard disk drive, copy all of the folders (or files) that are located directly under [HAP_Internal] or [HAP_External] to your computer.

Related Topic

- [Returning backup music files from your computer to the HDD AUDIO PLAYER \(for Windows\)](#)


4-472-859-12(5)
Copyright 2013 Sony Corporation

A specialized application for HDD AUDIO PLAYER HAP Music Transfer

Backing up music files in the HDD AUDIO PLAYER to your computer (for Mac)

It is recommended that you copy music files in the HDD AUDIO PLAYER to your computer as a backup before you bring the HDD AUDIO PLAYER for repair or if you do not have the original music files in your computer.

You need to use the HAP Music Transfer application installed in your computer for the backup. Make sure that the HDD AUDIO PLAYER is turned on.

1. Open the context menu of HAP Music Transfer from  (the HAP Music Transfer icon) on the Dock of your computer and then select [Explore HAP].
The Finder opens and icon(s) of the available shared folder(s) appear. ([HAP_Internal] appears for the internal hard disk drive and [HAP_External] appears for the external hard disk drive if one is connected.)
2. Select [HAP_Internal] (to select the internal hard disk drive) or [HAP_External] (to select the external hard disk drive), and then keep selecting folders until you reach the folder that contains the music files you want to back up.
3. Copy the music files from the HDD AUDIO PLAYER to the desired folder in your computer by drag and drop.

Note

- Do not transfer music files while backing up music files in the Finder using HAP Music Transfer.
- Do not transfer music files from your smartphone or tablet while backing up music files in the Finder.
- Set the [Auto Standby] function of the HDD AUDIO PLAYER to [Off] when you make a backup.

Hint

- If you want to back up all of the content in the internal or external hard disk drive, copy all of the folders (or files) that are located directly under [HAP_Internal] or [HAP_External] to your computer.

Related Topic


- [Returning backup music files from your computer to the HDD AUDIO PLAYER \(for Mac\)](#)

A specialized application for HDD AUDIO PLAYER HAP Music Transfer

Returning backup music files from your computer to the HDD AUDIO PLAYER (for Windows)

If you want to return music files you have copied to your computer as a backup to the HDD AUDIO PLAYER, follow the steps below.

You need to use the HAP Music Transfer application installed in your computer for returning backup files. Make sure that the HDD AUDIO PLAYER is turned on.

1. Open the context menu of HAP Music Transfer from  (the HAP Music Transfer icon) on the task tray of your computer and then select [Explore HAP].
The Explorer window opens and icon(s) of the available shared folder(s) appear. ([HAP_Internal] appears for the internal hard disk drive and [HAP_External] appears for the external hard disk drive if one is connected.)
2. Select [HAP_Internal] (to select the internal hard disk drive) or [HAP_External] (to select the external hard disk drive), and then keep selecting folders until you reach the folder of the music files you want to restore.
3. Copy the music files from your computer to the HDD AUDIO PLAYER by drag and drop.

Note

- Do not transfer music files while returning backup files from your computer to the HDD AUDIO PLAYER using HAP Music Transfer.
- Do not transfer music files from your smartphone or tablet while returning backup files from your computer to the HDD AUDIO PLAYER.
- Do not return backup files from two or more computers at the same time.

Hint

- If you want to return the backup files of all of the content in the internal or external hard disk drive, select the backup folder and check “Watch” in the Contents Settings window of HAP Music Transfer. Go to the Transfer Settings window and select [Clear] for the [Transferred Files List] configuration to delete the transfer history, and then automatically or manually transfer the files.

Related Topic

- [Backing up music files in the HDD AUDIO PLAYER to your computer \(for Windows\)](#)

4-472-859-12(5)
Copyright 2013 Sony Corporation


A specialized application for HDD AUDIO PLAYER

HAP Music Transfer

Returning backup music files from your computer to the HDD AUDIO PLAYER (for Mac)

If you want to return music files you have copied to your computer as a backup to the HDD AUDIO PLAYER, follow the steps below.

You need to use the HAP Music Transfer application installed in your computer for returning backup files. Make sure that the HDD AUDIO PLAYER is turned on.

1. Open the context menu of HAP Music Transfer from  (the HAP Music Transfer icon) on the Dock of your computer and then select [Explore HAP].
The Finder opens and icon(s) of the available shared folder(s) appear. ([HAP_Internal] appears for the internal hard disk drive and [HAP_External] appears for the external hard disk drive if one is connected.)
2. Select [HAP_Internal] (to select the internal hard disk drive) or [HAP_External] (to select the external hard disk drive), and then keep selecting folders until you reach the folder of the music files you want to restore.
3. Copy the music files from your computer to the HDD AUDIO PLAYER by drag and drop.

Note

- Do not transfer music files while returning backup files from your computer to the HDD AUDIO PLAYER using HAP Music Transfer.
- Do not transfer music files from your smartphone or tablet while returning backup files from your computer to the HDD AUDIO PLAYER.
- Do not return backup files from two or more computers at the same time.

Hint

- If you want to return the backup files of all of the content in the internal or external hard disk drive, select the backup folder and check “Watch” in the Contents Settings window of HAP Music Transfer. Go to the Transfer Settings window and select [Clear] for the [Transferred Files List] configuration to delete the transfer history, and then automatically or manually transfer the files.

Related Topic

- [Backing up music files in the HDD AUDIO PLAYER to your computer \(for Mac\)](#)

4-472-859-12(5)
Copyright 2013 Sony Corporation

A specialized application for HDD AUDIO PLAYER HAP Music Transfer

Error messages

The selected device is now offline. Please confirm the power of device and network connection.

- The HDD AUDIO PLAYER that was previously selected or that is currently selected is not turned on.
Turn the power on or set the HDD AUDIO PLAYER to the Network Standby mode.
- The HDD AUDIO PLAYER that was previously selected or that is currently selected is not connected to the network.
Check the network connection and connect the HDD AUDIO PLAYER to the same network as your computer.

The watched folders you selected is over 100. Please confirm the list of watched folders.

You cannot select more than 100 source folders. Select the folders you do not want to transfer and select [Del] in the Contents Settings window.

There is not enough space on the device.

The HDD AUDIO PLAYER does not have enough space on its hard disk drive. Remove the unnecessary files from the hard disk drive or add the external hard disk drive to ensure there is enough space.

There is not enough space on the disk.

There is not enough free space on the computer to use HAP Music Transfer. Delete unnecessary files from the hard disk drive of your computer.

The selected device is not connected. The files can't be copied. Please confirm the power of device and network connection.

- The selected HDD AUDIO PLAYER switched to standby mode or was turned off while transferring music files.
Turn the power on or set the HDD AUDIO PLAYER to the Network Standby mode.
- The network connection with the selected HDD AUDIO PLAYER was interrupted while transferring music files.
Check the network connection.

An error occurs when transferring. Please confirm the transferred files list.

Unexpected error occurred during the transfer. Check the transfer history by selecting [Transferred Files List] in the Transfer Settings window. Also check the status of the connected HDD AUDIO PLAYER and the

network connection.

4-472-859-12(5)
Copyright 2013 Sony Corporation

A specialized application for HDD AUDIO PLAYER
HAP Music Transfer

Cannot install HAP Music Transfer.

- Make sure that HAP Music Transfer is compatible with your operating system. Check the system requirements and install HAP Music Transfer on a computer with a compatible operating system installed.
- Make sure that there is enough free space on the hard disk drive of your computer. If not, delete any unnecessary files from your computer.

4-472-859-12(5)

Copyright 2013 Sony Corporation

A specialized application for HDD AUDIO PLAYER

HAP Music Transfer

HAP Music Transfer does not start.

- Your computer may not be functioning normally. Start other software to check if your computer is functioning normally.
- Your computer may not be functioning normally. Restart your computer.
- HAP Music Transfer may not be installed correctly. Uninstall HAP Music Transfer, and then install it again.

4-472-859-12(5)

Copyright 2013 Sony Corporation

A specialized application for HDD AUDIO PLAYER

HAP Music Transfer

HAP Music Transfer window is not displayed correctly.

- Your computer may not be functioning normally. Start other software to check if your computer is functioning normally.
- Your computer may not be functioning normally. Restart your computer.
- HAP Music Transfer may not be installed correctly. Uninstall HAP Music Transfer, and then install it again.

4-472-859-12(5)

Copyright 2013 Sony Corporation

A specialized application for HDD AUDIO PLAYER HAP Music Transfer

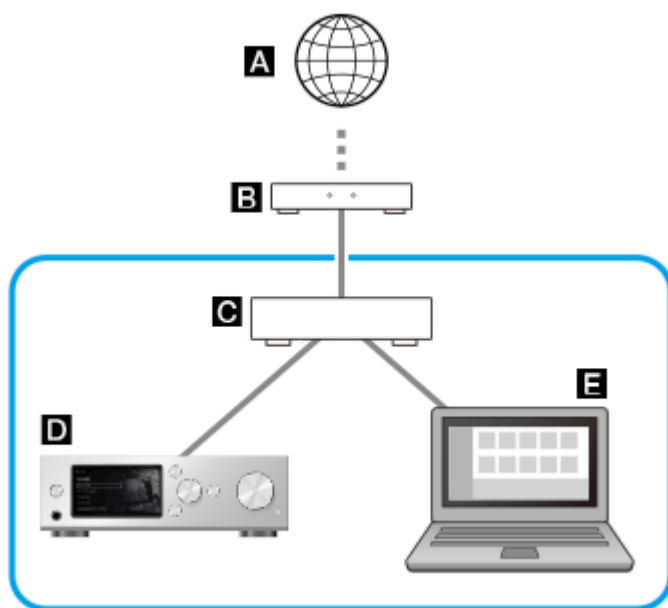
The desired HDD AUDIO PLAYER is not displayed in the Connection window.

- Check the network connection.
- Check that the HDD AUDIO PLAYER is connected to the same network as the computer is connected.

Example of a good network connection

(The HDD AUDIO PLAYER (**D**) and the computer (**E**) are connected to one router (**C**), so they belong to the same network.)

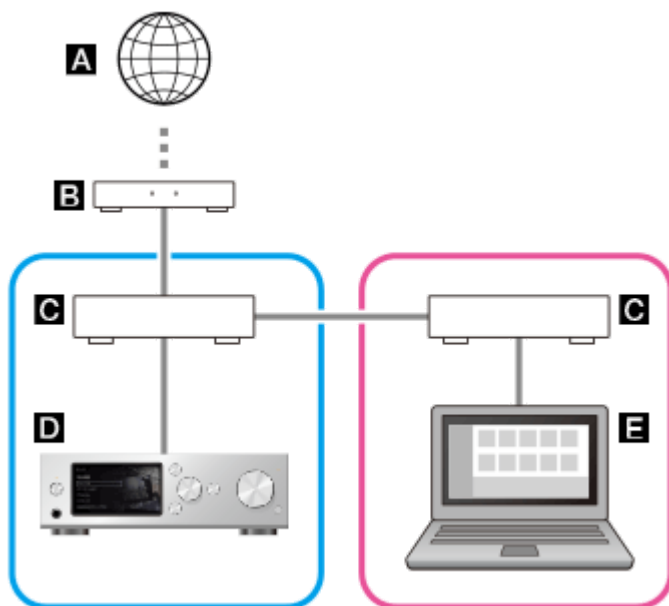
In this situation, the computer is able to recognize the HDD AUDIO PLAYER using HAP Music Transfer.



Example of a bad network connection

(The HDD AUDIO PLAYER (**D**) and the computer (**E**) are connected to different routers (**C**) or servers, so they belong to different networks.)

In this situation, the computer is not able to recognize the HDD AUDIO PLAYER using HAP Music Transfer.



A: Internet

B: Modem

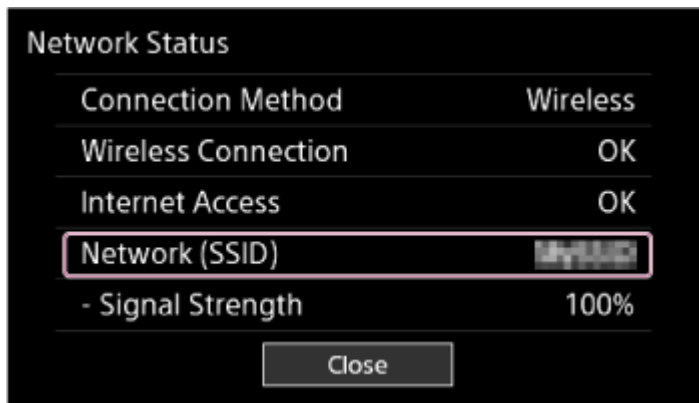
C: Router

D: HDD AUDIO PLAYER (The illustrations in this topic use HAP-S1 as an example.)

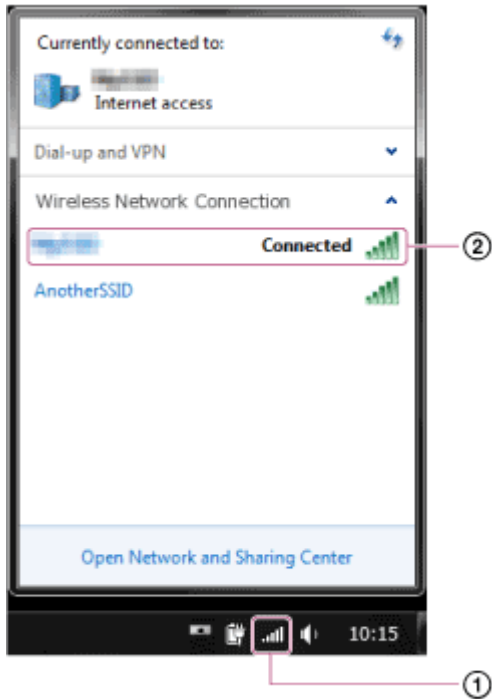
E: Computer

Distribute the connection using a network hub or a Wi-Fi access point set to infrastructure mode when it is difficult to connect the HDD AUDIO PLAYER and the computer directly to one router (for example, when using HAP Music Transfer on a computer placed in a different room from the HDD AUDIO PLAYER).

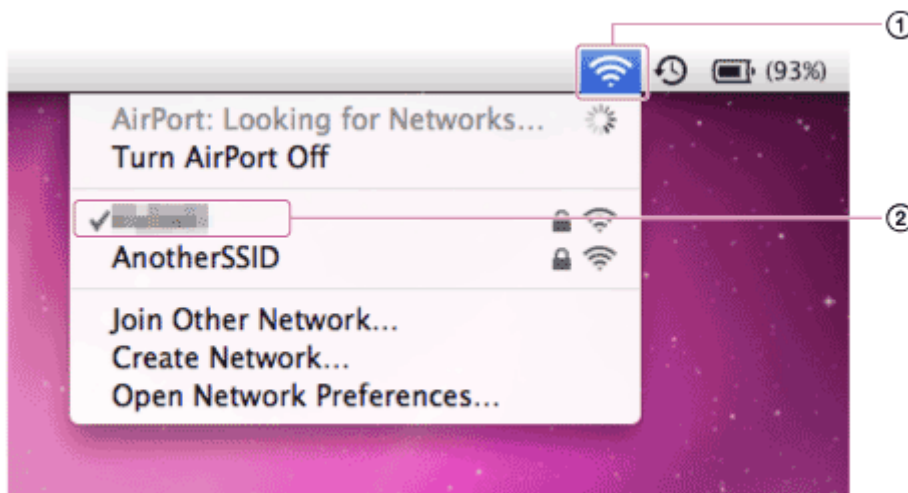
- The HDD AUDIO PLAYER is not turned on. Turn the power on or set the HDD AUDIO PLAYER to the Network Standby mode.
- If you are using your computer's firewall function or commercially available firewall software on your computer, HAP Music Transfer may not work properly.
 - If you are using your computer's firewall function, configure HAP Music Transfer as an "exception." Refer to your computer's operating manuals, the operating system help or the computer manufacturer's website for more information.
 - If you are using commercially available firewall software, disable the software or add HAP Music Transfer to the list of allowed programs. Refer to the help of the firewall software or operating manual for more information.
- If the network connection is interrupted while HAP Music Transfer is active, quit HAP Music Transfer once, and then restart it.
- The SSDP port (UDP 1900) used by your computer to detect other devices may be occupied by another application (such as a DLNA server). In this case, HAP Music Transfer automatically detects applications that may be occupying the SSDP port, and displays a warning screen. Quit the detected applications, and then restart HAP Music Transfer. For details on how to quit the applications, refer to the operating manual of each application.
- Some routers are equipped with a function (privacy separator) to prohibit communications between Wi-Fi terminal devices (such as a computer). Check that the function is disabled.
- Check the network SSID of the HDD AUDIO PLAYER and the computer. When network SSIDs are different from each other, the network separation function may be enabled on your router. Reconnect the HDD AUDIO PLAYER and the computer to the same SSID.
 - To check the network SSID of the HDD AUDIO PLAYER, select [Settings] - [Network Settings] - [View Network Status] on the Home screen. The network SSID of the HDD AUDIO PLAYER is displayed in [Network (SSID)].



- To check the network SSID of a Windows computer, click the Wi-Fi connection icon (①) on the task bar, and then check the item displayed as “Connected” (②).



- To check the network SSID of a Mac computer, click the Wi-Fi connection icon (①) on the menu bar, and then check the item on which a check mark is displayed (②).



- The “MAC address filtering” function may be enabled on your router. Disable this function.

A specialized application for HDD AUDIO PLAYER
HAP Music Transfer

You want to delete music files but do not know how.

- You can delete music files from the HDD AUDIO PLAYER using HAP Music Transfer.

Related Topic

- [Deleting music files from the HDD AUDIO PLAYER](#)

[↑ Go to Page Top](#)

4-472-859-12(5)
Copyright 2013 Sony Corporation

A specialized application for HDD AUDIO PLAYER
HAP Music Transfer

Music files cannot be transferred correctly.

Transferred music files cannot be found on the HDD AUDIO PLAYER.

Music files cannot be transferred to the HDD AUDIO PLAYER.

The computer does not start transferring files even when the time set in the Transfer Timer has elapsed.

Tracks belonging to the same album are registered to different albums.

Tracks belonging to different albums are registered to one album.

The album art image displayed on the HDD AUDIO PLAYER is different from that displayed in the music file management software on your computer or does not display.

The track name or album name displayed on the HDD AUDIO PLAYER is different from that displayed in the music file management software on your computer or does not display.

4-472-859-12(5)

Copyright 2013 Sony Corporation

A specialized application for HDD AUDIO PLAYER
HAP Music Transfer

Transferred music files cannot be found on the HDD AUDIO PLAYER.

- Check the transfer history by selecting [Open] for [Transferred Files List] in the Transfer Settings window, and confirm that the desired music files have been transferred.
- The HDD AUDIO PLAYER may not have finished analyzing the music files. Wait for a while and check again, or turn the power of the HDD AUDIO PLAYER off and then on again.

Related Topic

- [Descriptions and functions of the Transfer Settings window](#)

 [Go to Page Top](#)

4-472-859-12(5)
Copyright 2013 Sony Corporation

A specialized application for HDD AUDIO PLAYER HAP Music Transfer

Music files cannot be transferred to the HDD AUDIO PLAYER.

- The hard disk drive of the HDD AUDIO PLAYER may be full. Delete any unnecessary music files or add a new external hard disk drive to ensure there is sufficient free space for new files.
- The network connection may be malfunctioning. The network connection may be interrupted for some reason if a Wi-Fi (wireless LAN) connection is used. Check the network connection, select the destination HDD AUDIO PLAYER in the Connection window, and then transfer the music files again.
- The audio format of the music files may not be supported by the HDD AUDIO PLAYER. Check the supported audio formats in the Contents Settings window.
- You may not be able to transfer files from HAP Music Transfer if your router is set to low power consumption mode. In this case, disable the low power consumption mode of your router. For details, refer to the operating manual of your router.
- Make sure not to transfer music files from your smartphone or tablet and HAP Music Transfer at the same time.

Related Topic

- [Descriptions and functions of the Connection window](#)

 [Go to Page Top](#)

A specialized application for HDD AUDIO PLAYER HAP Music Transfer

The computer does not start transferring files even when the time set in the Transfer Timer has elapsed.

- If the [Task Priority] in the Transfer Settings window is set to [Low], the priority of file transfer may be lower than all other processes performed on your computer. Your computer will start the file transfer when other processes are finished (Windows only).
- The Transfer Timer does not work while you are operating the computer. Your computer only starts transferring files when the time set for the Transfer Timer elapses without any operation being performed on your computer.

Related Topic

- [Descriptions and functions of the Transfer Settings window](#)

 [Go to Page Top](#)

4-472-859-12(5)

Copyright 2013 Sony Corporation

A specialized application for HDD AUDIO PLAYER HAP Music Transfer

Tracks belonging to the same album are registered to different albums.

- The album name or album artist name embedded in the music files are different.
 - Select the target albums with HDD Audio Remote, and then edit the album name and album artist name of the tracks so they are the same. (For details on how to edit the information, refer to the Help of HDD Audio Remote.)
 - Edit the album name and album artist name of all music files you want to include together in same album so they are the same using music file management software on your computer, and then transfer (*) those music files to the HDD AUDIO PLAYER.
 - Edit the album name and album artist name of all music files you want to include together in same album so they are the same using tag editing software on your computer, and then transfer (*) those music files to the HDD AUDIO PLAYER. However, problems may occur in the music file management software if you are using that on your computer to edit.
- You can merge different albums into one album using the HDD AUDIO PLAYER or HDD Audio Remote. Albums belonging to the same folder are displayed as possible albums. For details, refer to the Help Guide for the HDD AUDIO PLAYER or the Help for HDD Audio Remote.
- Perform [Get music info] from the Folder list screen on the HDD AUDIO PLAYER or HDD Audio Remote and select the information you want to obtain from the options displayed. Music files with the same album information will be recognized as tracks in the same album. For details, refer to the Help Guide for the HDD AUDIO PLAYER or the Help for HDD Audio Remote.

* When you transfer music files the next time, the HAP Music Transfer transfers the changed files to the HDD AUDIO PLAYER again if it detects changes to the files in the folder you have selected.

Related Topic

- [Step 2. Transferring music files stored on the computer to the HDD AUDIO PLAYER](#)

 [Go to Page Top](#)

A specialized application for HDD AUDIO PLAYER HAP Music Transfer

Tracks belonging to different albums are registered to one album.

- The album name and album artist name embedded in the music files are same on multiple albums.
 - Select the target album with HDD Audio Remote, and then edit the album name or album artist name of all music files you want to separate into different albums. (For details on how to edit the information, refer to the Help of HDD Audio Remote.)
 - Edit the album name or album artist name of all music files you want to separate into different albums using music file management software on your computer, and then transfer (*) those music files to the HDD AUDIO PLAYER.
 - Edit the album name or album artist name of all music files you want to separate into different albums using tag editing software on your computer, and then transfer (*) those music files to the HDD AUDIO PLAYER. However, problems may occur in the music file management software if you are using that on your computer.

* When you transfer music files the next time, the HAP Music Transfer transfers the changed files to the HDD AUDIO PLAYER again if it detects changes to the files in the folder you have selected.

Related Topic

- [Step 2. Transferring music files stored on the computer to the HDD AUDIO PLAYER](#)

 [Go to Page Top](#)

A specialized application for HDD AUDIO PLAYER HAP Music Transfer

The album art image displayed on the HDD AUDIO PLAYER is different from that displayed in the music file management software on your computer or does not display.

- Some music file management software may not embed album art images to music files. In this case, the album art image may be different from that displayed in the music file management software on your computer because the HDD AUDIO PLAYER obtains the album art image from the Gracenote database using tag information of the music file.
 - Select the target album with HDD Audio Remote, and then edit the album art image. (For details on how to edit the information, refer to the Help of HDD Audio Remote.)
 - Edit the album art images of all music files for which you want to change the album art image using tag editing software on your computer, and then transfer (*) those music files to the HDD AUDIO PLAYER. However, problems may occur in the music file management software if you are using that on your computer.

* When you transfer music files the next time, the HAP Music Transfer transfers the changed files to the HDD AUDIO PLAYER again if it detects changes to the files in the folder you have selected.

Related Topic

- [Step 2. Transferring music files stored on the computer to the HDD AUDIO PLAYER](#)

[↑ Go to Page Top](#)

A specialized application for HDD AUDIO PLAYER HAP Music Transfer

The track name or album name displayed on the HDD AUDIO PLAYER is different from that displayed in the music file management software on your computer or does not display.

- Some music file management software may not embed music information with some kinds of file formats such as WAV. In this case, the track name or album name may be different from that displayed in the music file management software on your computer because the HDD AUDIO PLAYER obtains the track name or album name from the Gracenote database using information of the music file other than the tag information.
 - Select the target track or album with HDD Audio Remote, and then edit the track name or album name. (For details on how to edit the information, refer to the Help of HDD Audio Remote.)
 - Edit the track name or album name of all music files for which you want to change the track name or album name using tag editing software on your computer, and then transfer (*) those music files to the HDD AUDIO PLAYER. However, problems may occur in the music file management software if you are using that on your computer.

* When you transfer music files the next time, the HAP Music Transfer transfers the changed files to the HDD AUDIO PLAYER again if it detects changes to the files in the folder you have selected.

- Text encoding information may be dropped out while the music file management software is embedding music information. In despite of automatic detection of the text encoding type attempted by the HDD AUDIO PLAYER, the music information may not be correctly displayed. In such a case, check the music file management software settings, or change the text encoding type by selecting [Settings] - [System Settings] - [Text encoding] and copy the file again.

Related Topic

- [Step 2. Transferring music files stored on the computer to the HDD AUDIO PLAYER](#)

 [Go to Page Top](#)

A specialized application for HDD AUDIO PLAYER
HAP Music Transfer

[Features of HAP Music Transfer](#)

Introduces the features of HAP Music Transfer.

[Compatible HDD AUDIO PLAYER models](#)

Introduces the HDD AUDIO PLAYER models that are compatible with HAP Music Transfer.

[Trademarks](#)

Provides a list of trademarks/registered trademarks.

4-472-859-12(5)
Copyright 2013 Sony Corporation

A specialized application for HDD AUDIO PLAYER

HAP Music Transfer

[System requirements](#)

[Explains the system environment required for computers to use HAP Music Transfer.](#)

[Installing HAP Music Transfer](#)

[Explains how to install HAP Music Transfer.](#)

[Checking the connection status of your computer and the HDD AUDIO PLAYER](#)

[Explains how to check whether your computer and the HDD AUDIO PLAYER are connected to the same network.](#)

4-472-859-12(5)

Copyright 2013 Sony Corporation

A specialized application for HDD AUDIO PLAYER

HAP Music Transfer

[Step 1. Starting HAP Music Transfer](#)

[Explains how to start HAP Music Transfer.](#)

[Step 2. Transferring music files stored on the computer to the HDD AUDIO PLAYER](#)

[Explains how to transfer music files stored on your computer to the HDD AUDIO PLAYER.](#)

[Descriptions and functions of the Connection window](#)

[Explains the functions of the Connection window. Select the HDD AUDIO PLAYER to connect to in this window.](#)

[Descriptions and functions of the Contents Settings window](#)

[Explains the functions of the Contents Settings window. Select the folder in which music files are stored your computer and the file formats of the music files to be transferred.](#)

[Descriptions and functions of the Transfer Settings window](#)

[Explains the functions of the Transfer Settings window. Select the transfer method \(manual/automatic\), the hard disk drive on the HDD AUDIO PLAYER for the music files to be transferred to and other settings in this window.](#)

4-472-859-12(5)

Copyright 2013 Sony Corporation

A specialized application for HDD AUDIO PLAYER

HAP Music Transfer

[Deleting music files from the HDD AUDIO PLAYER](#)

[Explains how to delete music files from the HDD AUDIO PLAYER using HAP Music Transfer application.](#)

4-472-859-12(5)

Copyright 2013 Sony Corporation

A specialized application for HDD AUDIO PLAYER

HAP Music Transfer

Using the system menu (Windows only)

Explains how to use the system menu. Use the system menu to access the HAP Music Transfer Help and find the HAP Music Transfer software version.

Using the context menu for the HAP Music Transfer task tray icon (Windows only)

Explains how to use the context menu that can be displayed from the HAP Music Transfer icon in the task tray. From the context menu, you can start file transfer, open the HAP Music Transfer operation window, or open the explorer and display the hard disk drive of the HDD AUDIO PLAYER.

4-472-859-12(5)

Copyright 2013 Sony Corporation

A specialized application for HDD AUDIO PLAYER

HAP Music Transfer

Using menus from the menu bar (Mac only)

Explains how to use the menus from the menu bar. Use the menu bar to access the HAP Music Transfer Help and find the HAP Music Transfer software version.

Using the context menu for the HAP Music Transfer icon on the Dock (Mac only)

Explains how to use the context menu that can be displayed for the HAP Music Transfer icon in the Dock. From the context menu, you can start file transfer, open the HAP Music Transfer operation window, or open the Finder and display the hard disk drive of the HDD AUDIO PLAYER.

4-472-859-12(5)

Copyright 2013 Sony Corporation

A specialized application for HDD AUDIO PLAYER

HAP Music Transfer

[Backing up data](#)

[Provides information on having a backup.](#)

[Backing up music files in the HDD AUDIO PLAYER to your computer \(for Windows\)](#)

[Explains how to back up music files stored in the HDD AUDIO PLAYER to your computer.](#)

[Backing up music files in the HDD AUDIO PLAYER to your computer \(for Mac\)](#)

[Explains how to back up music files stored in the HDD AUDIO PLAYER to your computer.](#)

[Returning backup music files from your computer to the HDD AUDIO PLAYER \(for Windows\)](#)

[Explains how to return music files that have been copied to your computer as a backup to the HDD AUDIO PLAYER.](#)

[Returning backup music files from your computer to the HDD AUDIO PLAYER \(for Mac\)](#)

[Explains how to return music files that have been copied to your computer as a backup to the HDD AUDIO PLAYER.](#)

4-472-859-12(5)

Copyright 2013 Sony Corporation

SONY

Help

A specialized application for HDD AUDIO PLAYER
HAP Music Transfer

[Error messages](#)

4-472-859-12(5)
Copyright 2013 Sony Corporation

A specialized application for HDD AUDIO PLAYER

HAP Music Transfer

Cannot install HAP Music Transfer.

HAP Music Transfer does not start.

HAP Music Transfer window is not displayed correctly.

The desired HDD AUDIO PLAYER is not displayed in the Connection window.

You want to delete music files but do not know how.

Music files cannot be transferred correctly.

4-472-859-12(5)

Copyright 2013 Sony Corporation

A specialized application for HDD AUDIO PLAYER
HAP Music Transfer

[Features of HAP Music Transfer](#)

[Introduces the features of HAP Music Transfer.](#)

[Compatible HDD AUDIO PLAYER models](#)

[Introduces the HDD AUDIO PLAYER models that are compatible with HAP Music Transfer.](#)

[Trademarks](#)

[Provides a list of trademarks/registered trademarks.](#)

4-472-859-12(5)
Copyright 2013 Sony Corporation

A specialized application for HDD AUDIO PLAYER

HAP Music Transfer

[System requirements](#)

[Explains the system environment required for computers to use HAP Music Transfer.](#)

[Installing HAP Music Transfer](#)

[Explains how to install HAP Music Transfer.](#)

[Checking the connection status of your computer and the HDD AUDIO PLAYER](#)

[Explains how to check whether your computer and the HDD AUDIO PLAYER are connected to the same network.](#)

4-472-859-12(5)

Copyright 2013 Sony Corporation

A specialized application for HDD AUDIO PLAYER

HAP Music Transfer

[Step 1. Starting HAP Music Transfer](#)

[Explains how to start HAP Music Transfer.](#)

[Step 2. Transferring music files stored on the computer to the HDD AUDIO PLAYER](#)

[Explains how to transfer music files stored on your computer to the HDD AUDIO PLAYER.](#)

[Descriptions and functions of the Connection window](#)

[Explains the functions of the Connection window. Select the HDD AUDIO PLAYER to connect to in this window.](#)

[Descriptions and functions of the Contents Settings window](#)

[Explains the functions of the Contents Settings window. Select the folder in which music files are stored on your computer and the file formats of the music files to be transferred.](#)

[Descriptions and functions of the Transfer Settings window](#)

[Explains the functions of the Transfer Settings window. Select the transfer method \(manual/automatic\), the hard disk drive on the HDD AUDIO PLAYER for the music files to be transferred to and other settings in this window.](#)

4-472-859-12(5)

Copyright 2013 Sony Corporation

A specialized application for HDD AUDIO PLAYER

HAP Music Transfer

[Deleting music files from the HDD AUDIO PLAYER](#)

[Explains how to delete music files from the HDD AUDIO PLAYER using HAP Music Transfer application.](#)

4-472-859-12(5)

Copyright 2013 Sony Corporation

A specialized application for HDD AUDIO PLAYER

HAP Music Transfer

[Using the system menu \(Windows only\)](#)

[Explains how to use the system menu. Use the system menu to access the HAP Music Transfer Help and find the HAP Music Transfer software version.](#)

[Using the context menu for the HAP Music Transfer task tray icon \(Windows only\)](#)

[Explains how to use the context menu that can be displayed from the HAP Music Transfer icon in the task tray. From the context menu, you can start file transfer, open the HAP Music Transfer operation window, or open the explorer and display the hard disk drive of the HDD AUDIO PLAYER.](#)

4-472-859-12(5)

Copyright 2013 Sony Corporation

A specialized application for HDD AUDIO PLAYER

HAP Music Transfer

Using menus from the menu bar (Mac only)

Explains how to use the menus from the menu bar. Use the menu bar to access the HAP Music Transfer Help and find the HAP Music Transfer software version.

Using the context menu for the HAP Music Transfer icon on the Dock (Mac only)

Explains how to use the context menu that can be displayed for the HAP Music Transfer icon in the Dock. From the context menu, you can start file transfer, open the HAP Music Transfer operation window, or open the Finder and display the hard disk drive of the HDD AUDIO PLAYER.

4-472-859-12(5)

Copyright 2013 Sony Corporation

A specialized application for HDD AUDIO PLAYER
HAP Music Transfer

[Backing up data](#)

[Provides information on having a backup.](#)

[Backing up music files in the HDD AUDIO PLAYER to your computer \(for Windows\)](#)

[Explains how to back up music files stored in the HDD AUDIO PLAYER to your computer.](#)

[Backing up music files in the HDD AUDIO PLAYER to your computer \(for Mac\)](#)

[Explains how to back up music files stored in the HDD AUDIO PLAYER to your computer.](#)

[Returning backup music files from your computer to the HDD AUDIO PLAYER \(for Windows\)](#)

[Explains how to return music files that have been copied to your computer as a backup to the HDD AUDIO PLAYER.](#)

[Returning backup music files from your computer to the HDD AUDIO PLAYER \(for Mac\)](#)

[Explains how to return music files that have been copied to your computer as a backup to the HDD AUDIO PLAYER.](#)

SONY

Help

A specialized application for HDD AUDIO PLAYER
HAP Music Transfer

[Error messages](#)

4-472-859-12(5)
Copyright 2013 Sony Corporation

A specialized application for HDD AUDIO PLAYER

HAP Music Transfer

Cannot install HAP Music Transfer.

HAP Music Transfer does not start.

HAP Music Transfer window is not displayed correctly.

The desired HDD AUDIO PLAYER is not displayed in the Connection window.

You want to delete music files but do not know how.

Music files cannot be transferred correctly.

4-472-859-12(5)

Copyright 2013 Sony Corporation