

Wireless Stereo Headset
WI-OE600

Model: YY2962

Use this manual if you encounter any problems, or have any questions.

Getting started

[What you can do with the BLUETOOTH® function](#)

[About the voice guidance](#)

Supplied accessories

- └ [Checking the package contents](#)

Parts and controls

- └ [Location and function of parts](#)
- └ [About the indicator](#)

[Wearing the headset](#)

Power/Charging

- └ [Charging the headset](#)
- └ [Available operating time](#)
- └ [Checking the remaining battery charge](#)
- └ [Turning on the headset](#)
- └ [Turning off the headset](#)

Making connections

[How to make a wireless connection to Bluetooth devices](#)

Android smartphone

- └ [Pairing and connecting with an Android smartphone](#)
- └ [Connecting to a paired Android smartphone](#)

iPhone (iOS devices)

- └ [Pairing and connecting with an iPhone](#)
- └ [Connecting to a paired iPhone](#)

Computers

- [Pairing and connecting with a computer \(Windows® 10\)](#)
- [Pairing and connecting with a computer \(Windows 8.1\)](#)
- [Pairing and connecting with a computer \(Mac\)](#)
- [Connecting to a paired computer \(Windows 10\)](#)
- [Connecting to a paired computer \(Windows 8.1\)](#)
- [Connecting to a paired computer \(Mac\)](#)

Other Bluetooth devices

- [Pairing and connecting with a Bluetooth device](#)
- [Connecting to a paired Bluetooth device](#)

Multipoint connection

- [Connecting the headset to both a music player and a smartphone / mobile phone \(multipoint connection\)](#)
- [Connecting the headset to 2 Android smartphones \(multipoint connection\)](#)
- [Connecting the headset to an Android smartphone and an iPhone \(multipoint connection\)](#)

Listening to music

Listening to music via a Bluetooth connection

- [Listening to music from a device via Bluetooth connection](#)
- [Controlling the audio device \(Bluetooth connection\)](#)
- [Disconnecting Bluetooth connection \(after use\)](#)

[Supported codecs](#)

Making phone calls

[Receiving a call](#)

[Making a call](#)

[Functions for a phone call](#)

[Making a video call on your computer](#)

[Disconnecting Bluetooth connection \(after use\)](#)

Using the voice assist function

[Using the voice assist function \(Google app\)](#)

[Using the voice assist function \(Siri\)](#)

Important information

[Precautions](#)

[To prevent burning or malfunction due to getting wet](#)

[If the headset gets wet](#)

[Licenses](#)

[Trademarks](#)

[Customer support websites](#)

Troubleshooting

[What can I do to solve a problem?](#)

Power/Charging

- [Unable to turn on the headset.](#)
- [Charging cannot be done.](#)
- [Charging time is too long.](#)
- [The available operating time is short \(the duration of the battery is short\).](#)

Sound

- [No sound](#)
- [Low sound level](#)
- [Low sound quality, or noise or unusual sound can be heard.](#)
- [Sound skips frequently.](#)

Bluetooth connection

- [Pairing cannot be done.](#)
- [Unable to make a Bluetooth connection.](#)
- [The headset does not operate properly.](#)
- [Cannot hear a person during a call/low voice from callers, your voice does not reach the person during a call/your voice is low on the caller's side.](#)

Resetting or initializing the headset

- [Resetting the headset](#)
- [Initializing the headset to restore factory settings](#)

Specifications

[Specifications](#)

Wireless Stereo Headset
WI-OE600

What you can do with the BLUETOOTH® function

The headset uses Bluetooth wireless technology, allowing you to do the following.

Listening to music

You can enjoy music wirelessly from a smartphone or music player, etc.



Talking on the phone

You can make and receive calls hands-free with a smartphone or mobile phone.



Wireless Stereo Headset
WI-OE600

About the voice guidance

You will hear a voice guidance in the following situations via the headset.

- When the headset is turned on: "Power on"
- When the headset is turned off: "Power off"
- When entering pairing mode: "Bluetooth pairing"
- When establishing a Bluetooth connection: "Bluetooth connected"
- When disconnecting a Bluetooth connection: "Bluetooth disconnected"
- When informing the remaining battery charge: "Battery about XX %" (The "XX" value indicates the approximate remaining charge. Use it as a rough estimate.) / "Battery fully charged"
- When the remaining battery charge is low: "Low battery, please recharge headset"
- When automatically turning off due to low battery: "Please recharge headset. Power off"

Wireless Stereo Headset
WI-OE600

Checking the package contents

After opening the package, check that all of the items in the list are included. If any items are missing, contact your dealer.

Numbers in () indicate the item amount.

Wireless Stereo Headset

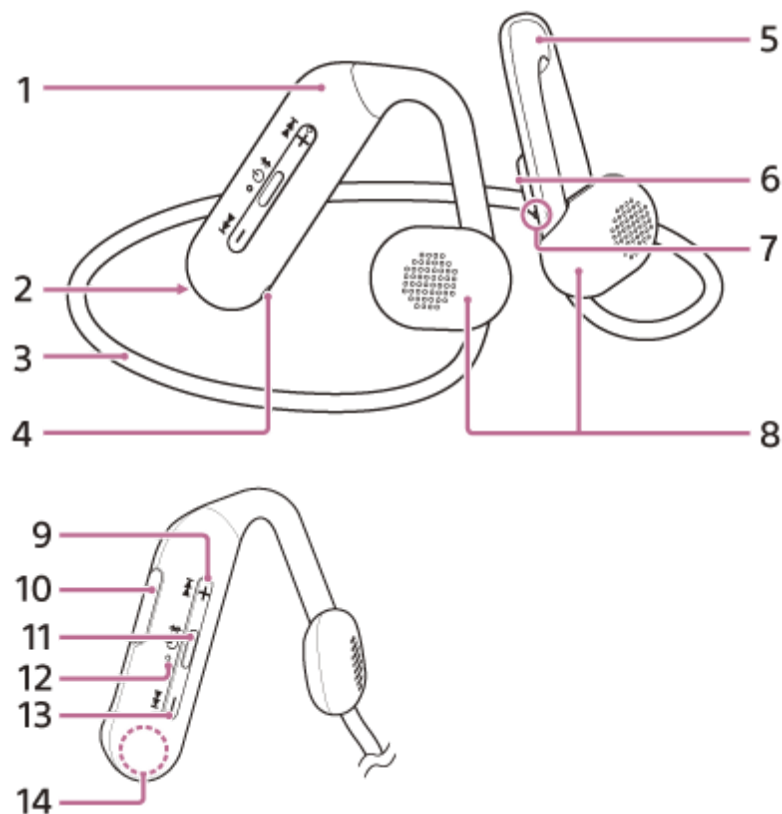
USB Type-C® cable (USB-A to USB-C®) (approx. 20 cm (7.88 in.)) (1)



Carrying pouch (1)



Location and function of parts



1. Right unit/remote control component
2. ® (right) mark
3. Neckband
4. Microphone
Picks up the sound of your voice when talking on the phone.
5. Left unit
6. Ⓛ (left) mark
7. Tactile dot
There is a tactile dot on the left unit.
8. Housings (left, right)
9. + / ►► (volume +/next) button
There is a tactile dot on the + button.
10. USB Type-C port
Connect the headset to a computer, or to an AC outlet via a commercially available USB AC adaptor, with the supplied USB Type-C cable to charge the headset.
11. - / ◻ / ◻ (play/call/power/Bluetooth) button

12. Indicator

Lights up in orange while charging.

Lights up in orange or blue to indicate the battery or communications status of the headset.

13. – / ◀◀ (volume –/previous) button

14. Built-in antenna

A Bluetooth antenna is built into the headset.

Related Topic

- [About the indicator](#)
- [Checking the remaining battery charge](#)

5-043-991-11(1) Copyright 2022 Sony Corporation

About the indicator

You can check various statuses of the headset by the indicator.

● : Turns on in blue / ● : Turns on in orange / -: Turns off

Turning on

● - ● (flashes twice in blue)

In this case, when the remaining battery charge is 20% or lower (requires charging), the indicator lights successively as follows.

● - ● - ● (repeatedly flashes slowly in orange for about 15 seconds)

For details, see "[Checking the remaining battery charge](#)".

Turning off

● (lights up in blue for about 2 seconds)

When the remaining battery charge becomes low

● - ● - ● (repeatedly flashes slowly in orange for about 15 seconds)

Charging

- While charging
● (lights up in orange)
The indicator turns off after charging is complete.
- Abnormal temperature
● ● - - ● ● - - (repeatedly flashes twice in orange)
- Abnormal charging
● - - ● - - (repeatedly flashes slowly in orange)

Bluetooth function

- Pairing mode
● ● - - ● ● - - (repeatedly flashes twice in blue)
- Not connected
● - - ● - - ● - - (repeatedly flashes in blue at about 1-second intervals)
- Connection process completed
● ● ● ● ● ● ● (repeatedly flashes quickly in blue for about 5 seconds)
- Connected
● - - - - - ● - - - - - (repeatedly flashes in blue at about 5-second intervals)
- Incoming call
● ● ● ● ● ● ● (repeatedly flashes quickly in blue)

The unconnected and connected status indications automatically turn off after a period of time has passed. They start flashing again for a period of time when some operation is performed. When the remaining battery charge becomes low, the indicator starts flashing in orange.

Other

- Initialization completed

● ● ● ● (flashes 4 times in blue)

For details, see “[Initializing the headset to restore factory settings](#)”.

Related Topic

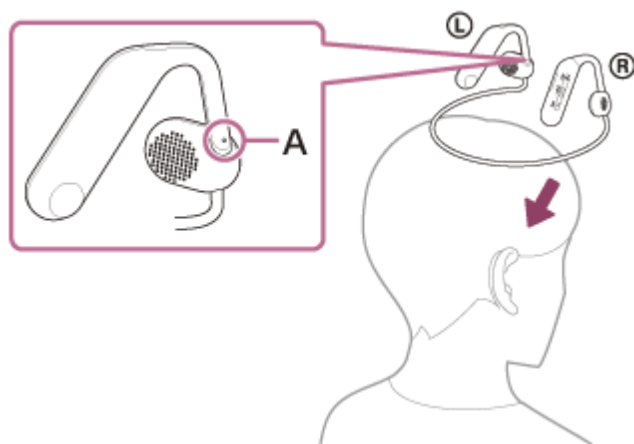
- [Checking the remaining battery charge](#)
- [Initializing the headset to restore factory settings](#)

5-043-991-11(1) Copyright 2022 Sony Corporation

Wearing the headset

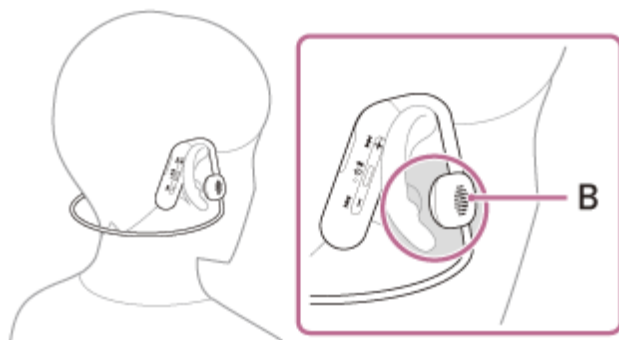
1 Wear the headset on your ears.

1. Position the neckband at the rear of your head, and bring down the headset from above your head. Place the side with the **Ⓐ** (left) mark to your left and the side with the **Ⓑ** (right) mark to your right. There is a tactile dot on the **Ⓐ** (left) mark side.

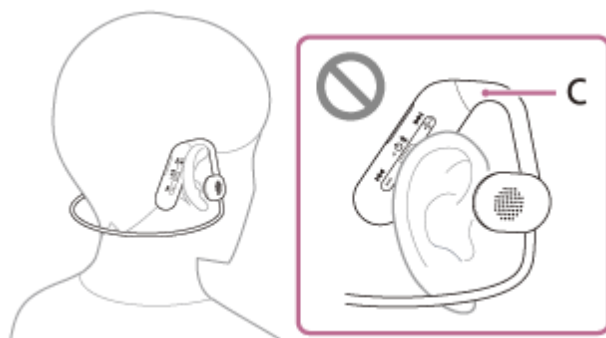


A: Tactile dot

2. Hang the ear hangers of the left and right units firmly on your ears. When you wear the headset, a certain space is left between the housing and your ear.



B: Housing

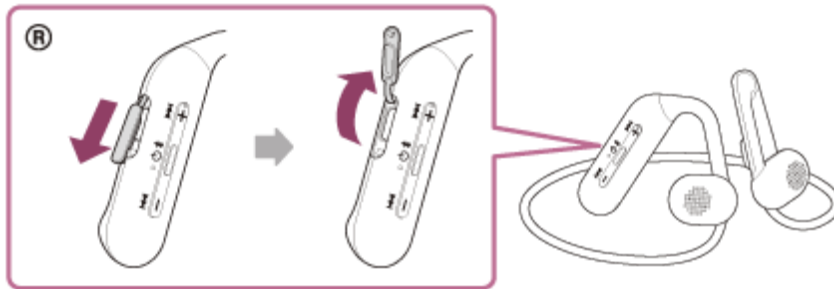


C: Ear hanger

Charging the headset

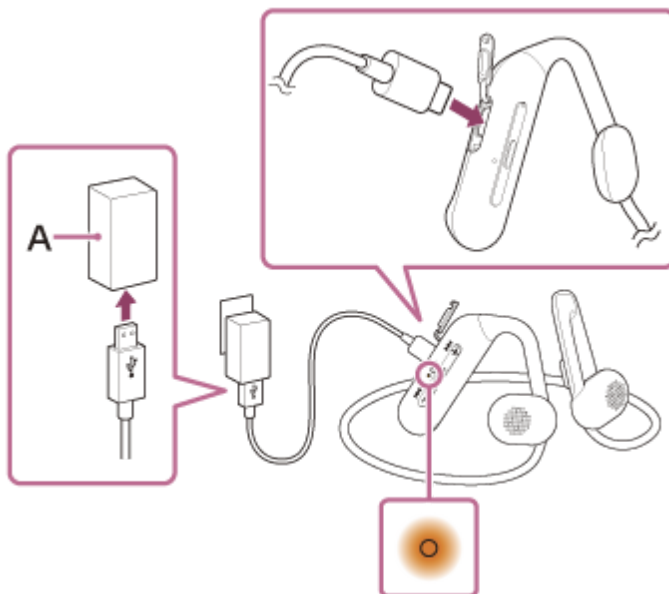
The headset contains a built-in lithium-ion rechargeable battery. Use the supplied USB Type-C cable to charge the headset before use.

1 Open the USB Type-C port cover.



2 Connect the headset to an AC outlet.

Use the supplied USB Type-C cable and a commercially available USB AC adaptor.

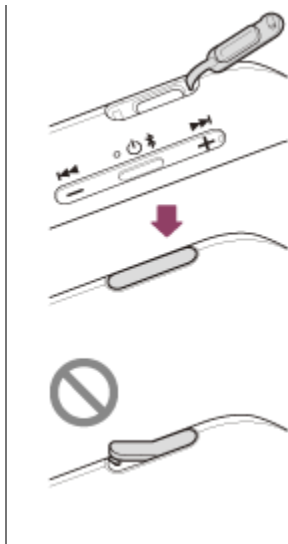


A: USB AC adaptor

- The indicator (orange) on the headset lights up.
- Charging is completed in about 3 hours (*) and the indicator turns off automatically.

* Time required for charging the empty battery to its full capacity. The charging time may differ depending on the conditions of use.

After charging is complete, disconnect the USB Type-C cable and close the USB Type-C port cover securely to prevent water or dust from entering the headset.



System requirements for battery charge using USB

USB AC adaptor

A commercially available USB AC adaptor capable of supplying an output current of 0.5 A (500 mA) or more

Personal computer

Personal computer with a standard USB port

- We do not guarantee operation on all computers.
- Operations using a custom-built or homebuilt computer are not guaranteed.

Hint

- The headset can be also charged by connecting the headset to a running computer using the supplied USB Type-C cable.
- If charging starts while the headset is on, the headset will turn off automatically.

Note

- Charging may not be successful with cables other than the supplied USB Type-C cable.
- Charging may not be successful depending on the type of USB AC adaptor.
- When the headset is connected to an AC outlet or computer, all operations such as turning on the headset, registering or connecting to Bluetooth devices, and music playback cannot be performed.
- The headset cannot be charged when the computer goes into standby (sleep) or hibernation mode. In this case, change the computer settings, and start charging once again.
- If the headset is not used for a long time, the rechargeable battery usage hours may be reduced. However, the battery life will improve after charging and discharging several times. If you store the headset for a long time, charge the battery once every 6 months to avoid over-discharge.
- If the headset is not used for a long time, it may take longer to charge the battery.
- If the headset detects a problem while charging due to the following causes, the indicator (orange) flashes. In this case, charge once again within the charging temperature range. If the problem persists, consult your nearest Sony dealer.
 - Ambient temperature exceeds the charging temperature range of 5 °C - 35 °C (41 °F - 95 °F).
 - There is a problem with the rechargeable battery.
- If the headset is not used for a long time, the indicator (orange) may not immediately light up when the headset starts charging. Please wait a moment until the indicator lights up.
- If the usage hours of the built-in rechargeable battery decrease significantly, the battery should be replaced. Consult your nearest Sony dealer.

- Avoid exposure to extreme temperature changes, direct sunlight, moisture, sand, dust, and electrical shock. Never leave the headset in a parked vehicle.
- When connecting the headset to a computer, use only the supplied USB Type-C cable, and make sure to connect them directly. Charging will not be properly completed when the headset is connected through a USB hub.

5-043-991-11(1) Copyright 2022 Sony Corporation

Wireless Stereo Headset
WI-OE600

Available operating time

The available operating times of the headset with the battery fully charged are as follows:

Bluetooth connection

Music playback time (AAC): Max. 10 hours

Music playback time (SBC): Max. 10 hours

- About 60 minutes of music playback is possible after 10 minutes charging.

Communication time: Max. 10 hours

Note

- Usage hours may be different from the time described above depending on the conditions of use.

Related Topic

- [Supported codecs](#)

Checking the remaining battery charge

You can check the remaining battery charge of the rechargeable battery by the following way.

When you turn on the headset, the voice guidance indicating the remaining battery charge can be heard.

“Battery about XX %” (The “XX” value indicates the approximate remaining charge.)

“Battery fully charged”

The remaining battery charge indicated by the voice guidance may differ from the actual remaining charge in some cases. Use it as a rough estimate.

The indicator (orange) also flashes for about 15 seconds if the remaining battery charge is 20% or lower when the headset is turned on.

When the remaining charge becomes low

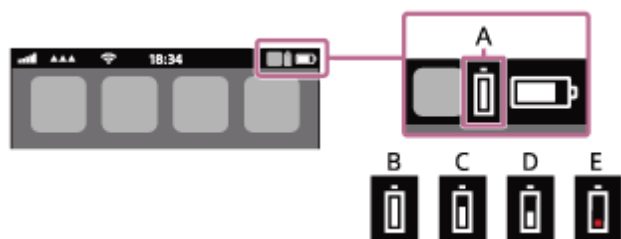
A warning beep sounds and the color of the operating indicator (blue) becomes orange. If you hear the voice guidance say, “Low battery, please recharge headset”, charge the headset as soon as possible.

When the battery becomes completely empty, a warning beep sounds, the voice guidance says, “Please recharge headset. Power off”, and the headset automatically turns off.

When you are using an iPhone or iPod touch

When the headset is connected to an iPhone or iPod touch over an HFP (Hands-free Profile) Bluetooth connection, it will show an icon that indicates the remaining battery charge of the headset on the screen of the iPhone or iPod touch.

The display position is an example.



A: Remaining battery charge of the headset

B: 100% - 70%

C: 70% - 50%

D: 50% - 20%

E: 20% or lower (requires charging)

The remaining battery charge of the headset is also displayed on the widget of an iPhone or iPod touch running iOS 11 or later.

For more details, refer to the operating instructions supplied with the iPhone or iPod touch.

The remaining charge which is displayed may differ from the actual remaining charge in some cases. Use it as a rough estimate.

When you are using an Android™ smartphone (OS 8.1 or later)

When the headset is connected to an Android smartphone via HFP Bluetooth connection, select [Settings] - [Device connection] - [Bluetooth] to display the remaining battery charge of the headset as “100%”, “70%”, “50%” or “20%” in the connected Bluetooth device column.

The operation above is an example. For details, refer to the operating instructions of the Android smartphone.

The remaining charge which is displayed may differ from the actual remaining charge in some cases. Use it as a rough estimate.

Note

- If the headset and smartphone are not connected with HFP, the remaining battery charge will not be correctly displayed.
- If you connect the headset to an iPhone/iPod touch or Android smartphone with "Media audio" (A2DP) only in a multipoint connection, the remaining battery charge will not be displayed correctly.
- The remaining battery charge may not be properly displayed if the headset has not been used for a long time. In this case, repeatedly charge and discharge the battery multiple times to properly display the remaining battery charge.

Related Topic

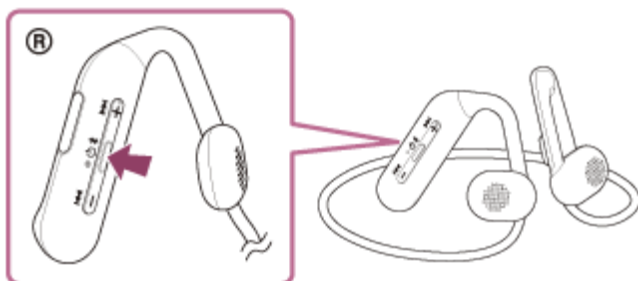
- [About the indicator](#)

5-043-991-11(1) Copyright 2022 Sony Corporation

Wireless Stereo Headset
WI-OE600

Turning on the headset

- 1 Press and hold the  (power) button for about 2 seconds until the indicator (blue) flashes.



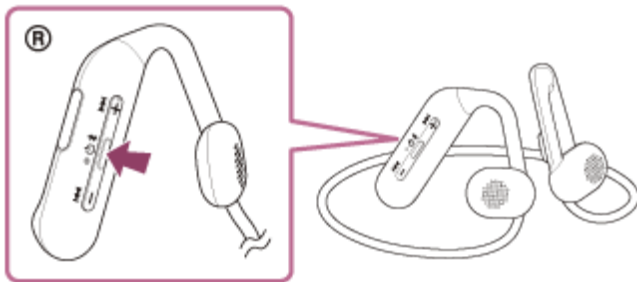
Related Topic

- [Turning off the headset](#)

Wireless Stereo Headset
WI-OE600

Turning off the headset

- 1 Press and hold the  (power) button for about 2 seconds until the indicator (blue) turns off.



Related Topic

- [Turning on the headset](#)

How to make a wireless connection to Bluetooth devices

You can enjoy music and hands-free calling with the headset wirelessly by using your Bluetooth device's Bluetooth function.

Pairing

To use the Bluetooth function, both of the connecting devices must be registered in advance. The operation to register a device is called "pairing".

Pair the headset and the device manually.

Connecting to a paired device

Once a device is paired, it is not necessary to pair it again. Connect to devices already paired with the headset using the methods necessary for each device.

Related Topic

- [Pairing and connecting with an Android smartphone](#)
- [Pairing and connecting with an iPhone](#)
- [Pairing and connecting with a computer \(Windows® 10\)](#)
- [Pairing and connecting with a computer \(Windows 8.1\)](#)
- [Pairing and connecting with a computer \(Mac\)](#)
- [Pairing and connecting with a Bluetooth device](#)
- [Connecting to a paired Android smartphone](#)
- [Connecting to a paired iPhone](#)
- [Connecting to a paired computer \(Windows 10\)](#)
- [Connecting to a paired computer \(Windows 8.1\)](#)
- [Connecting to a paired computer \(Mac\)](#)
- [Connecting to a paired Bluetooth device](#)

Pairing and connecting with an Android smartphone


The operation to register the device that you wish to connect to is called “pairing”. First, pair a device to use it with the headset for the first time.

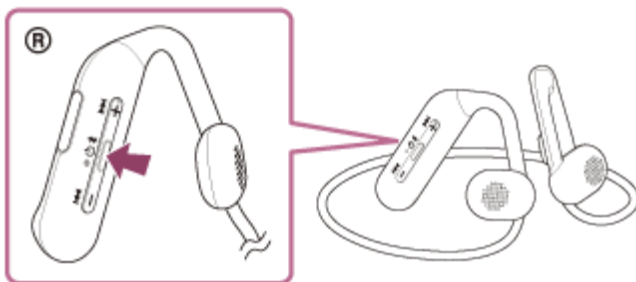
Before starting the operation, make sure of the following:

- The Android smartphone is placed within 1 m (3 feet) of the headset.
- The headset is charged sufficiently.
- The operating instructions of the Android smartphone is in hand.

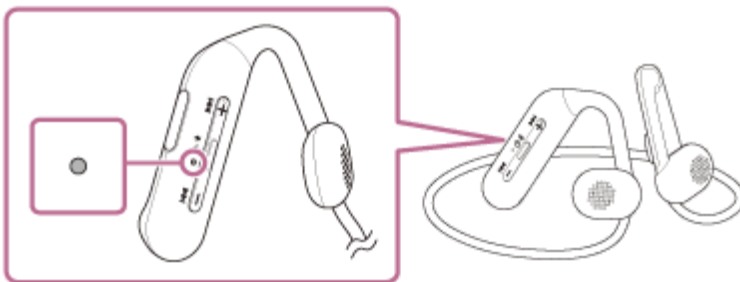
1 Enter pairing mode on this headset.

Turn on the headset when you pair the headset with a device for the first time after you bought it or after you initialized the headset (the headset has no pairing information). The headset enters pairing mode automatically. In this case, proceed to step 2.

When you pair a second or subsequent device (the headset already has pairing information for other devices), press and hold the  (Bluetooth) button for about 7 seconds to enter pairing mode manually.



The indicator (blue) repeatedly flashes twice in a row. You will hear the voice guidance say, “Bluetooth pairing”.



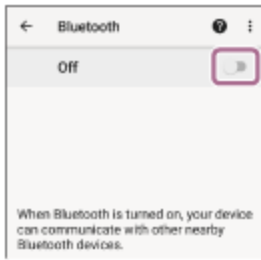
2 Unlock the screen of the Android smartphone if it is locked.

3 Find the headset on the Android smartphone.

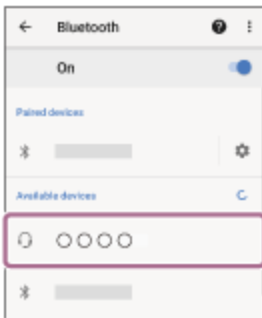
1. Select [Settings] - [Device connection] - [Bluetooth].



2. Touch the switch to turn on the Bluetooth function.



- 4 Touch [WI-OE600].



If Passkey (*) input is required, input "0000".

The headset and smartphone are paired and connected with each other.

You will hear the voice guidance say, "Bluetooth connected".

If they are not connected, see ["Connecting to a paired Android smartphone"](#).

If [WI-OE600] does not appear on the Android smartphone screen, try again from the beginning of step 3 .

* A Passkey may be called "Passcode", "PIN code", "PIN number", or "Password".

Hint

- The operation above is an example. For more details, refer to the operating instructions supplied with the Android smartphone.
- To delete all Bluetooth pairing information, see ["Initializing the headset to restore factory settings"](#).

Note

- If pairing is not established within 5 minutes, pairing mode is canceled, and the headset turns off. In this case, start the operation again from step 1 .
- Once Bluetooth devices are paired, there is no need to pair them again, except in the following cases:
 - Pairing information has been deleted after repair, etc.
 - When a 9th device is paired.
The headset can be paired with up to 8 devices. If a new device is paired after 8 devices are already paired, the registration information of the paired device with the oldest connection date is overwritten with the information for the new device.
 - When the pairing information for the headset has been deleted from the Bluetooth device.
 - When the headset is initialized.
All of the pairing information is deleted. In this case, delete the pairing information for the headset from the connected device and then pair them again.
- The headset can be paired with multiple devices, but can only play music from 1 paired device at a time.

Related Topic

- [How to make a wireless connection to Bluetooth devices](#)
- [Connecting to a paired Android smartphone](#)

- [Listening to music from a device via Bluetooth connection](#)
- [Disconnecting Bluetooth connection \(after use\)](#)
- [Initializing the headset to restore factory settings](#)

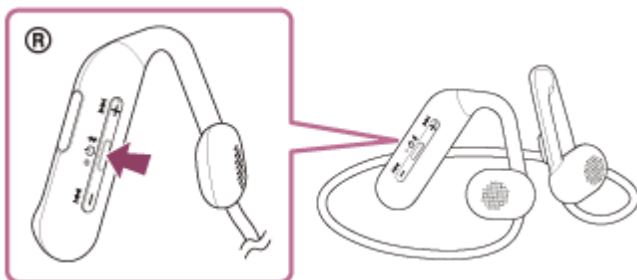
5-043-991-11(1) Copyright 2022 Sony Corporation

Connecting to a paired Android smartphone

- 1 **Unlock the screen of the Android smartphone if it is locked.**

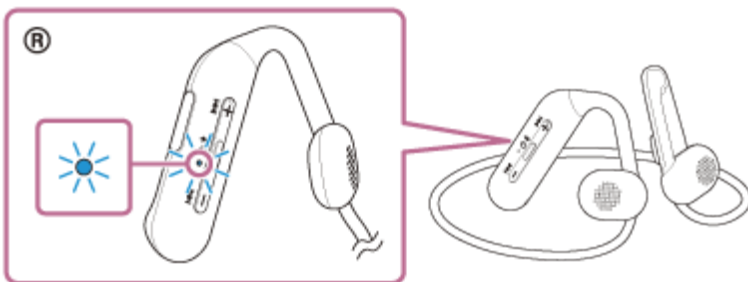
- 2 **Turn on the headset.**

Press and hold the  (power) button for about 2 seconds.



You will hear the voice guidance say, "Power on".

The indicator (blue) continues to flash even after you release your finger from the button.



If the headset has automatically connected to the last connected device, you will hear the voice guidance say, "Bluetooth connected".

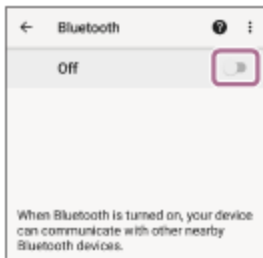
Check the connection status on the Android smartphone. If it is not connected, proceed to step **3**.

- 3 **Display the devices paired with the Android smartphone.**

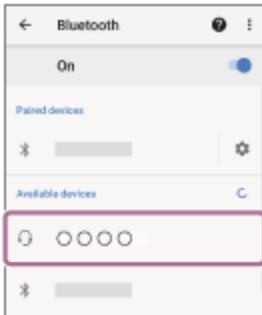
1. Select [Settings] - [Device connection] - [Bluetooth].



2. Touch the switch to turn on the Bluetooth function.



4 Touch [WI-OE600].



You will hear the voice guidance say, “Bluetooth connected”.

Hint

- The operation above is an example. For more details, refer to the operating instructions supplied with the Android smartphone.

Note

- If the last-connected Bluetooth device is placed near the headset, the headset may connect automatically to the device by simply turning on the headset. If this is the case, deactivate the Bluetooth function on the last-connected device or turn off the power.
- If you cannot connect your smartphone to the headset, delete the headset pairing information on your smartphone and perform the pairing again. As for the operations on your smartphone, refer to the operating instructions supplied with the smartphone.

Related Topic

- [How to make a wireless connection to Bluetooth devices](#)
- [Pairing and connecting with an Android smartphone](#)
- [Listening to music from a device via Bluetooth connection](#)
- [Disconnecting Bluetooth connection \(after use\)](#)

Pairing and connecting with an iPhone


The operation to register the device that you wish to connect to is called "pairing". First, pair a device to use it with the headset for the first time.

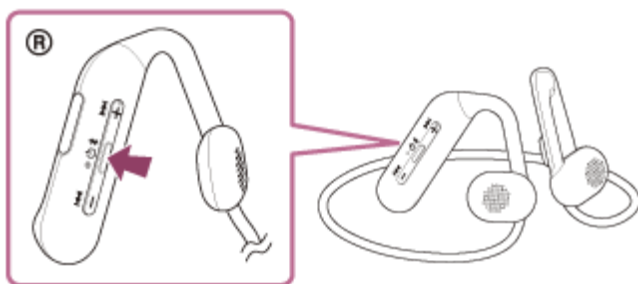
Before starting the operation, make sure of the following:

- The iPhone is placed within 1 m (3 feet) of the headset.
- The headset is charged sufficiently.
- The operating instructions of the iPhone is in hand.

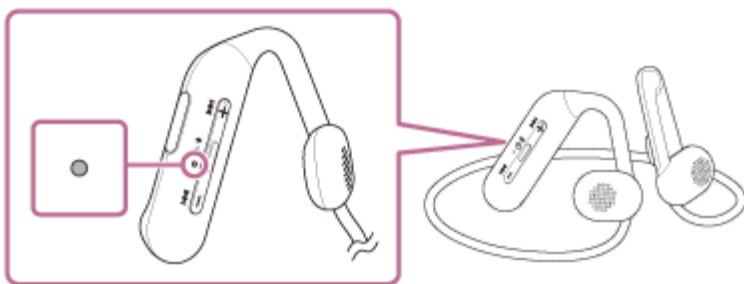
1 Enter pairing mode on this headset.

Turn on the headset when you pair the headset with a device for the first time after you bought it or after you initialized the headset (the headset has no pairing information). The headset enters pairing mode automatically. In this case, proceed to step 2.

When you pair a second or subsequent device (the headset already has pairing information for other devices), press and hold the  (Bluetooth) button for about 7 seconds to enter pairing mode manually.



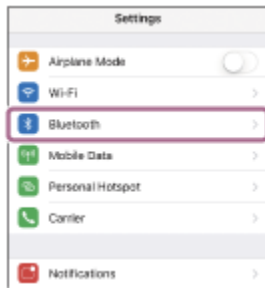
The indicator (blue) repeatedly flashes twice in a row. You will hear the voice guidance say, "Bluetooth pairing".



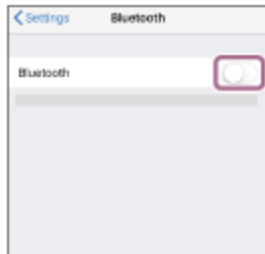
2 Unlock the screen of the iPhone if it is locked.

3 Find the headset on the iPhone.

1. Select [Settings].
2. Touch [Bluetooth].



3. Touch the switch to turn on the Bluetooth function.



- 4 Touch [WI-OE600].



If Passkey (*) input is required, input "0000".

The headset and iPhone are paired and connected with each other.

You will hear the voice guidance say, "Bluetooth connected".

If they are not connected, see ["Connecting to a paired iPhone"](#).

If [WI-OE600] does not appear on the iPhone screen, try again from the beginning of step 3.

* A Passkey may be called "Passcode", "PIN code", "PIN number", or "Password".

Hint

- The operation above is an example. For more details, refer to the operating instructions supplied with the iPhone.
- To delete all Bluetooth pairing information, see ["Initializing the headset to restore factory settings"](#).

Note

- If pairing is not established within 5 minutes, pairing mode is canceled, and the headset turns off. In this case, start the operation again from step 1.
- Once Bluetooth devices are paired, there is no need to pair them again, except in the following cases:
 - Pairing information has been deleted after repair, etc.
 - When a 9th device is paired.
The headset can be paired with up to 8 devices. If a new device is paired after 8 devices are already paired, the registration information of the paired device with the oldest connection date is overwritten with the information for the new device.
 - When the pairing information for the headset has been deleted from the Bluetooth device.
 - When the headset is initialized.
All of the pairing information is deleted. In this case, delete the pairing information for the headset from the connected device and then pair them again.
- The headset can be paired with multiple devices, but can only play music from 1 paired device at a time.

Related Topic

- [How to make a wireless connection to Bluetooth devices](#)
- [Connecting to a paired iPhone](#)
- [Listening to music from a device via Bluetooth connection](#)
- [Disconnecting Bluetooth connection \(after use\)](#)
- [Initializing the headset to restore factory settings](#)

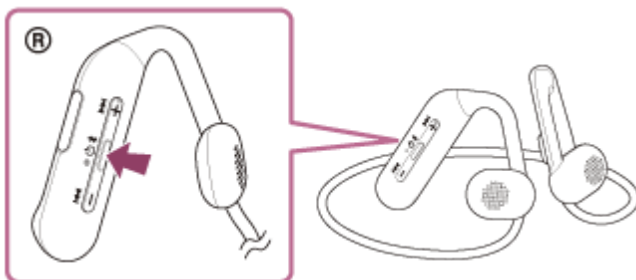
5-043-991-11(1) Copyright 2022 Sony Corporation

Connecting to a paired iPhone

1 Unlock the screen of the iPhone if it is locked.

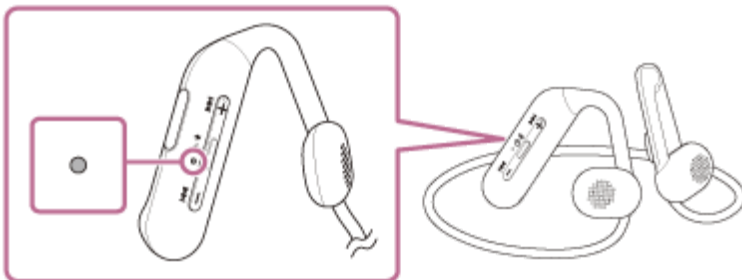
2 Turn on the headset.

Press and hold the  (power) button for about 2 seconds.



You will hear the voice guidance say, "Power on".

The indicator (blue) continues to flash even after you release your finger from the button.

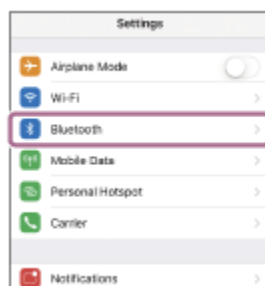


If the headset has automatically connected to the last connected device, you will hear the voice guidance say, "Bluetooth connected".

Check the connection status on the iPhone. If it is not connected, proceed to step **3**.

3 Display the devices paired with the iPhone.

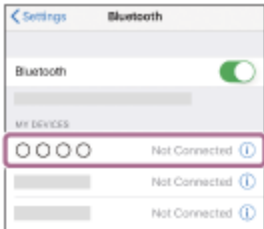
1. Select [Settings].
2. Touch [Bluetooth].



3. Touch the switch to turn on the Bluetooth function.



4 Touch [WI-OE600].



You will hear the voice guidance say, “Bluetooth connected”.

Hint

- The operation above is an example. For more details, refer to the operating instructions supplied with the iPhone.

Note

- If the last-connected Bluetooth device is placed near the headset, the headset may connect automatically to the device by simply turning on the headset. If this is the case, deactivate the Bluetooth function on the last-connected device or turn off the power.
- If you cannot connect your iPhone to the headset, delete the headset pairing information on your iPhone and perform the pairing again. As for the operations on your iPhone, refer to the operating instructions supplied with the iPhone.

Related Topic

- [How to make a wireless connection to Bluetooth devices](#)
- [Pairing and connecting with an iPhone](#)
- [Listening to music from a device via Bluetooth connection](#)
- [Disconnecting Bluetooth connection \(after use\)](#)

Pairing and connecting with a computer (Windows® 10)


The operation to register the device that you wish to connect to is called “pairing”. First, pair a device to use it with the headset for the first time.

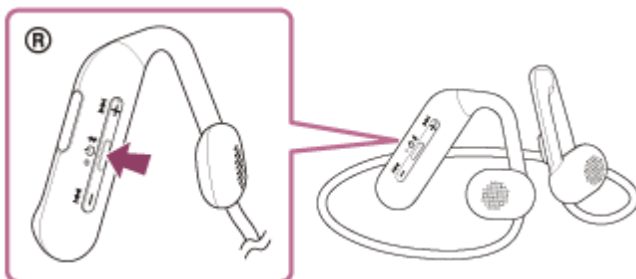
Before starting the operation, make sure of the following:

- Your computer has a Bluetooth function that supports music playback connections (A2DP).
- When you use a video calling application on your computer, your computer has a Bluetooth function that supports calling connections (HFP/HSP).
- The computer is placed within 1 m (3 feet) of the headset.
- The headset is charged sufficiently.
- The operating instructions of the computer is in hand.
- Depending on the computer you are using, the built-in Bluetooth adaptor may need to be turned on. If you do not know how to turn on the Bluetooth adaptor or are unsure if your computer has a built-in Bluetooth adaptor, refer to the operating instructions supplied with the computer.

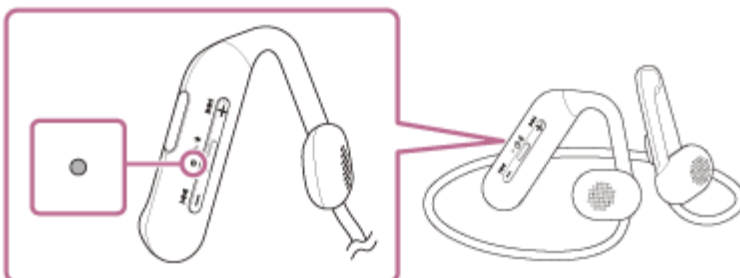
1 Enter pairing mode on this headset.

Turn on the headset when you pair the headset with a device for the first time after you bought it or after you initialized the headset (the headset has no pairing information). The headset enters pairing mode automatically. In this case, proceed to step 2.

When you pair a second or subsequent device (the headset already has pairing information for other devices), press and hold the  (Bluetooth) button for about 7 seconds to enter pairing mode manually.



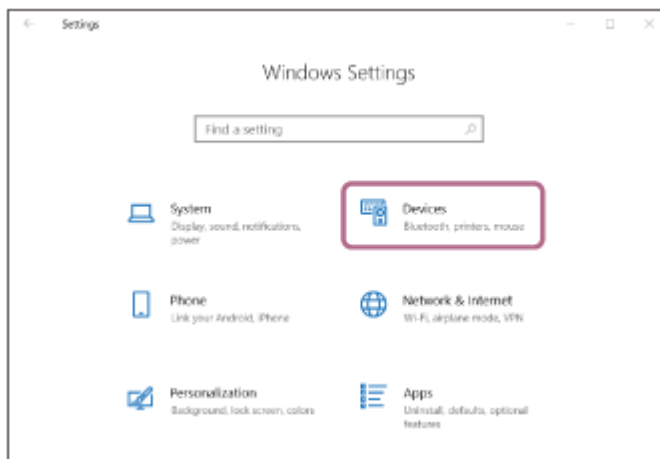
The indicator (blue) repeatedly flashes twice in a row. You will hear the voice guidance say, “Bluetooth pairing”.



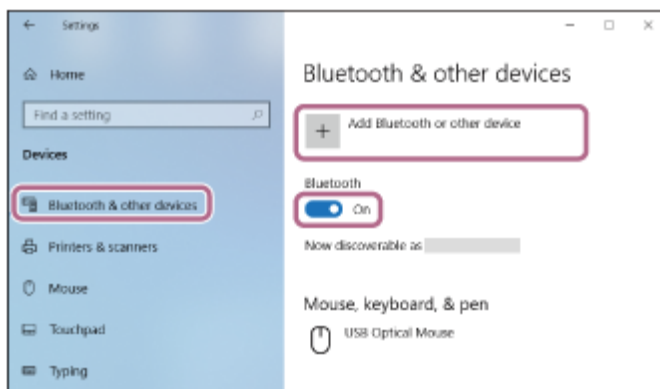
2 Wake the computer up if the computer is in standby (sleep) or hibernation mode.

3 Pair the headset using the computer.

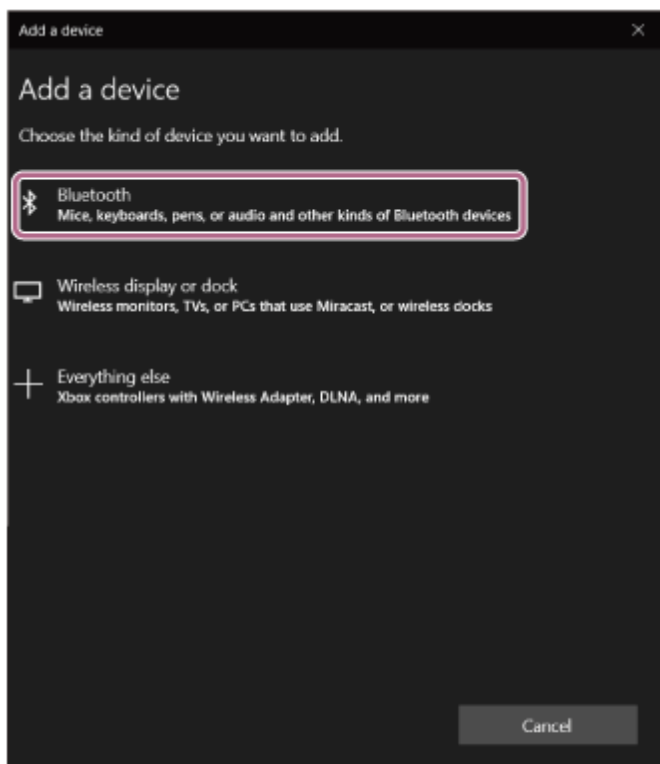
1. Click the [Start] button, then [Settings].
2. Click [Devices].



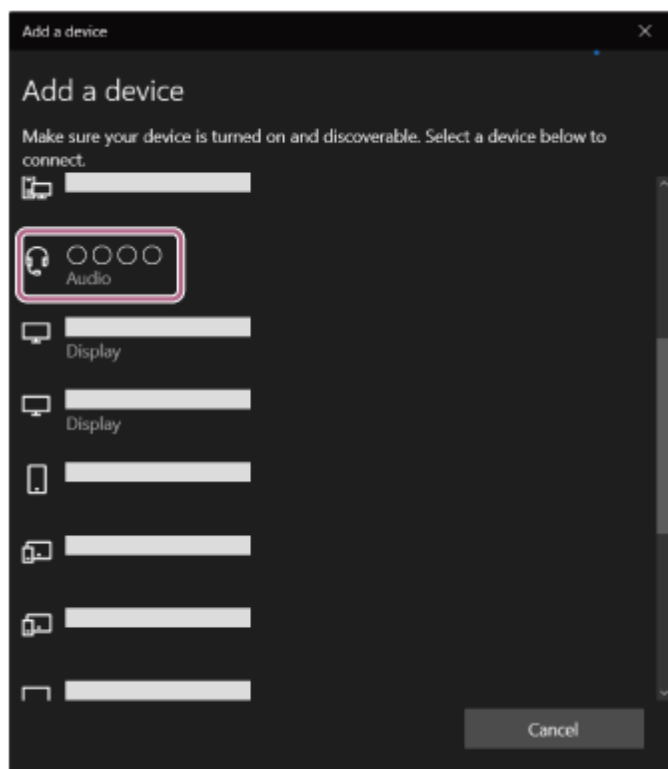
3. Click the [Bluetooth & other devices] tab, click the [Bluetooth] switch to turn on the Bluetooth function, then click [Add Bluetooth or other device].



4. Click [Bluetooth].



5. Click [WI-OE600].



If Passkey (*) input is required, input "0000".

The headset and computer are paired and connected with each other.

You will hear the voice guidance say, "Bluetooth connected".

If they are not connected, see ["Connecting to a paired computer \(Windows 10\)"](#).

If [WI-OE600] does not appear on the computer screen, try again from the beginning of step ③ .

* A Passkey may be called "Passcode", "PIN code", "PIN number", or "Password".

Hint

- The operation above is an example. For more details, refer to the operating instructions supplied with the computer.
- To delete all Bluetooth pairing information, see ["Initializing the headset to restore factory settings"](#).

Note

- If pairing is not established within 5 minutes, pairing mode is canceled, and the headset turns off. In this case, start the operation again from step ① .
- Once Bluetooth devices are paired, there is no need to pair them again, except in the following cases:
 - Pairing information has been deleted after repair, etc.
 - When a 9th device is paired.
The headset can be paired with up to 8 devices. If a new device is paired after 8 devices are already paired, the registration information of the paired device with the oldest connection date is overwritten with the information for the new device.
 - When the pairing information for the headset has been deleted from the Bluetooth device.
 - When the headset is initialized.
All of the pairing information is deleted. In this case, delete the pairing information for the headset from the connected device and then pair them again.
- The headset can be paired with multiple devices, but can only play music from 1 paired device at a time.

Related Topic

- [How to make a wireless connection to Bluetooth devices](#)
- [Connecting to a paired computer \(Windows 10\)](#)

- [Listening to music from a device via Bluetooth connection](#)
- [Making a video call on your computer](#)
- [Disconnecting Bluetooth connection \(after use\)](#)
- [Initializing the headset to restore factory settings](#)

5-043-991-11(1) Copyright 2022 Sony Corporation

Pairing and connecting with a computer (Windows 8.1)


The operation to register the device that you wish to connect to is called "pairing". First, pair a device to use it with the headset for the first time.

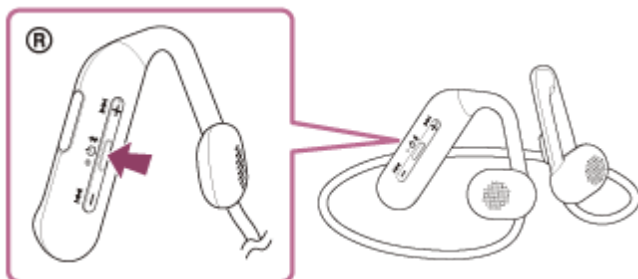
Before starting the operation, make sure of the following:

- Your computer has a Bluetooth function that supports music playback connections (A2DP).
- When you use a video calling application on your computer, your computer has a Bluetooth function that supports calling connections (HFP/HSP).
- The computer is placed within 1 m (3 feet) of the headset.
- The headset is charged sufficiently.
- The operating instructions of the computer is in hand.
- Depending on the computer you are using, the built-in Bluetooth adaptor may need to be turned on. If you do not know how to turn on the Bluetooth adaptor or are unsure if your computer has a built-in Bluetooth adaptor, refer to the operating instructions supplied with the computer.

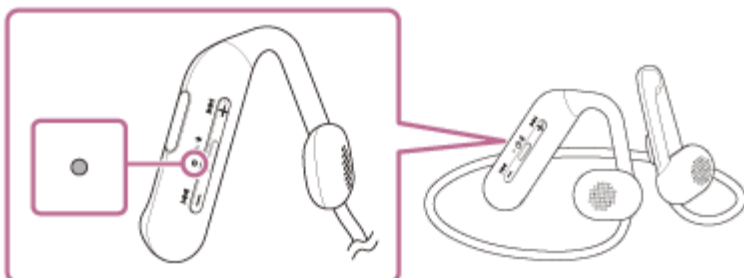
1 Enter pairing mode on this headset.

Turn on the headset when you pair the headset with a device for the first time after you bought it or after you initialized the headset (the headset has no pairing information). The headset enters pairing mode automatically. In this case, proceed to step 2.

When you pair a second or subsequent device (the headset already has pairing information for other devices), press and hold the  (Bluetooth) button for about 7 seconds to enter pairing mode manually.



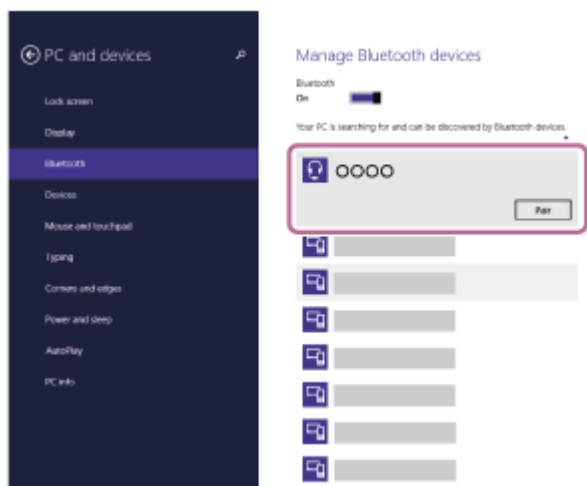
The indicator (blue) repeatedly flashes twice in a row. You will hear the voice guidance say, "Bluetooth pairing".



2 Wake the computer up if the computer is in standby (sleep) or hibernation mode.

3 Pair the headset using the computer.

1. Move the mouse pointer to the top-right corner of the screen (when using a touch panel, swipe from the right edge of the screen), then select [Settings] from the Charm Bar.



If Passkey (*) input is required, input "0000".

The headset and computer are paired and connected with each other.

You will hear the voice guidance say, "Bluetooth connected".

If they are not connected, see ["Connecting to a paired computer \(Windows 8.1\)"](#).

If [WI-OE600] does not appear on the computer screen, try again from the beginning of step ③ .

* A Passkey may be called "Passcode", "PIN code", "PIN number", or "Password".

Hint

- The operation above is an example. For more details, refer to the operating instructions supplied with the computer.
- To delete all Bluetooth pairing information, see ["Initializing the headset to restore factory settings"](#).

Note

- If pairing is not established within 5 minutes, pairing mode is canceled, and the headset turns off. In this case, start the operation again from step ① .
- Once Bluetooth devices are paired, there is no need to pair them again, except in the following cases:
 - Pairing information has been deleted after repair, etc.
 - When a 9th device is paired.
The headset can be paired with up to 8 devices. If a new device is paired after 8 devices are already paired, the registration information of the paired device with the oldest connection date is overwritten with the information for the new device.
 - When the pairing information for the headset has been deleted from the Bluetooth device.
 - When the headset is initialized.
All of the pairing information is deleted. In this case, delete the pairing information for the headset from the connected device and then pair them again.
- The headset can be paired with multiple devices, but can only play music from 1 paired device at a time.

Related Topic

- [How to make a wireless connection to Bluetooth devices](#)
- [Connecting to a paired computer \(Windows 8.1\)](#)
- [Listening to music from a device via Bluetooth connection](#)
- [Making a video call on your computer](#)
- [Disconnecting Bluetooth connection \(after use\)](#)
- [Initializing the headset to restore factory settings](#)



Pairing and connecting with a computer (Mac)

The operation to register the device that you wish to connect to is called “pairing”. First, pair a device to use it with the headset for the first time.

Compatible OS

macOS (version 11 or later)

Before starting the operation, make sure of the following:

- Your computer has a Bluetooth function that supports music playback connections (A2DP).
- When you use a video calling application on your computer, your computer has a Bluetooth function that supports calling connections (HFP/HSP).
- The computer is placed within 1 m (3 feet) of the headset.
- The headset is charged sufficiently.
- The operating instructions of the computer is in hand.
- Depending on the computer you are using, the built-in Bluetooth adaptor may need to be turned on. If you do not know how to turn on the Bluetooth adaptor or are unsure if your computer has a built-in Bluetooth adaptor, refer to the operating instructions supplied with the computer.
- Set the computer speaker to the ON mode.


If the computer speaker is set to the  “OFF” mode, no sound is heard from the headset.

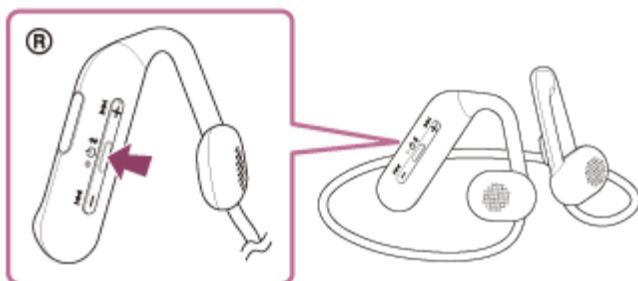
Computer speaker in the ON mode



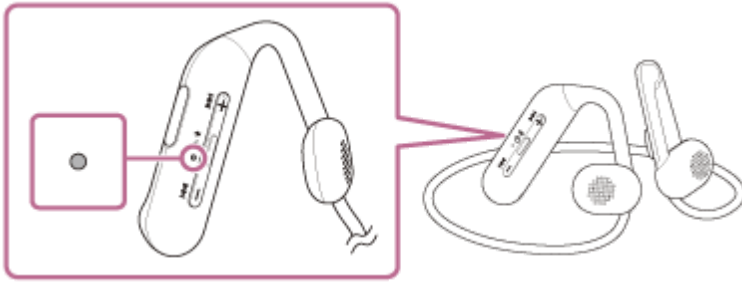
1 Enter pairing mode on this headset.

Turn on the headset when you pair the headset with a device for the first time after you bought it or after you initialized the headset (the headset has no pairing information). The headset enters pairing mode automatically. In this case, proceed to step 2.

When you pair a second or subsequent device (the headset already has pairing information for other devices), press and hold the  (Bluetooth) button for about 7 seconds to enter pairing mode manually.



The indicator (blue) repeatedly flashes twice in a row. You will hear the voice guidance say, “Bluetooth pairing”.



2 Wake the computer up if the computer is in standby (sleep) or hibernation mode.

3 Pair the headset using the computer.

1. Select [ (System Preferences)] - [Bluetooth] from the Dock at the bottom of the screen.



2. Select [WI-OE600] of the [Bluetooth] screen and click [Connect].



If Passkey (*) input is required, input "0000".

The headset and computer are paired and connected with each other.

You will hear the voice guidance say, "Bluetooth connected".

If they are not connected, see ["Connecting to a paired computer \(Mac\)"](#).

If [WI-OE600] does not appear on the computer screen, try again from the beginning of step 3 .

* A Passkey may be called "Passcode", "PIN code", "PIN number", or "Password".

Hint

- The operation above is an example. For more details, refer to the operating instructions supplied with the computer.
- To delete all Bluetooth pairing information, see ["Initializing the headset to restore factory settings"](#).

Note

- If pairing is not established within 5 minutes, pairing mode is canceled, and the headset turns off. In this case, start the operation again from step ❶.
- Once Bluetooth devices are paired, there is no need to pair them again, except in the following cases:
 - Pairing information has been deleted after repair, etc.
 - When a 9th device is paired.

The headset can be paired with up to 8 devices. If a new device is paired after 8 devices are already paired, the registration information of the paired device with the oldest connection date is overwritten with the information for the new device.
 - When the pairing information for the headset has been deleted from the Bluetooth device.
 - When the headset is initialized.

All of the pairing information is deleted. In this case, delete the pairing information for the headset from the connected device and then pair them again.
- The headset can be paired with multiple devices, but can only play music from 1 paired device at a time.

Related Topic

- [How to make a wireless connection to Bluetooth devices](#)
- [Connecting to a paired computer \(Mac\)](#)
- [Listening to music from a device via Bluetooth connection](#)
- [Making a video call on your computer](#)
- [Disconnecting Bluetooth connection \(after use\)](#)
- [Initializing the headset to restore factory settings](#)

Connecting to a paired computer (Windows 10)

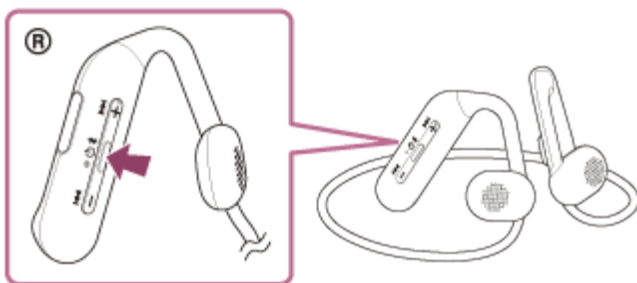
Before starting the operation, make sure of the following:

- Depending on the computer you are using, the built-in Bluetooth adaptor may need to be turned on. If you do not know how to turn on the Bluetooth adaptor or are unsure if your computer has a built-in Bluetooth adaptor, refer to the operating instructions supplied with the computer.

1 Wake the computer up if the computer is in standby (sleep) or hibernation mode.

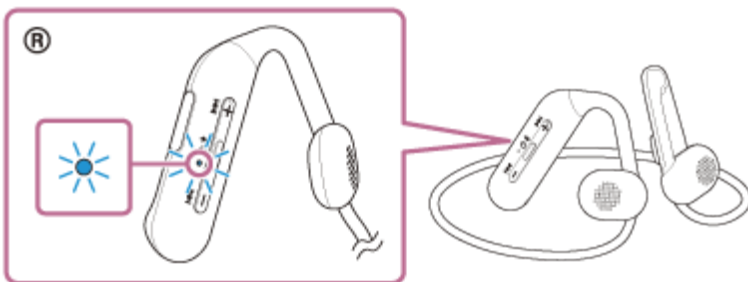
2 Turn on the headset.

Press and hold the  (power) button for about 2 seconds.



You will hear the voice guidance say, "Power on".

The indicator (blue) continues to flash even after you release your finger from the button.

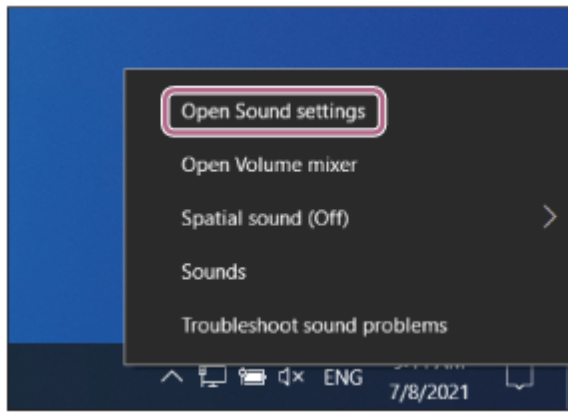


If the headset has automatically connected to the last connected device, you will hear the voice guidance say, "Bluetooth connected".

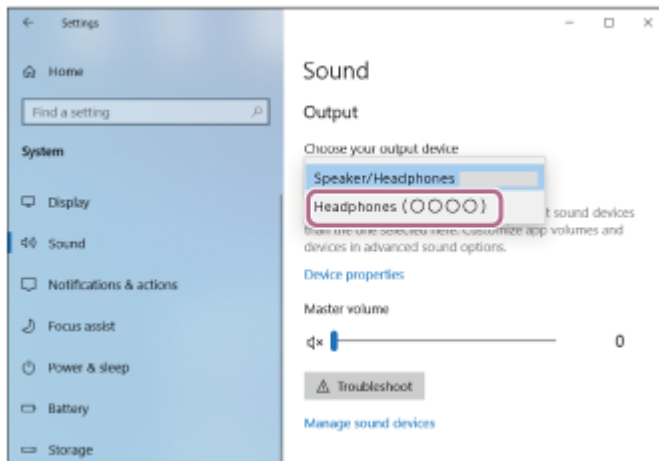
Check the connection status on the computer. If it is not connected, proceed to step **3**.

3 Select the headset using the computer.

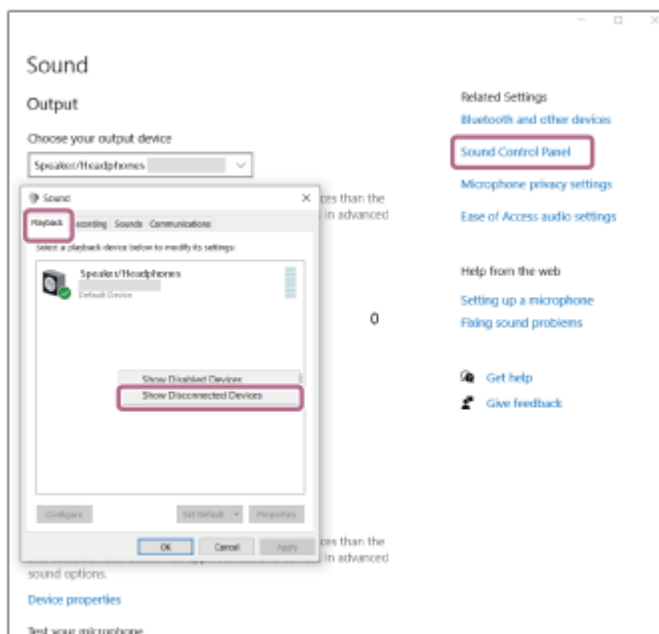
- Right-click the speaker icon on the toolbar, then select [Open Sound settings].



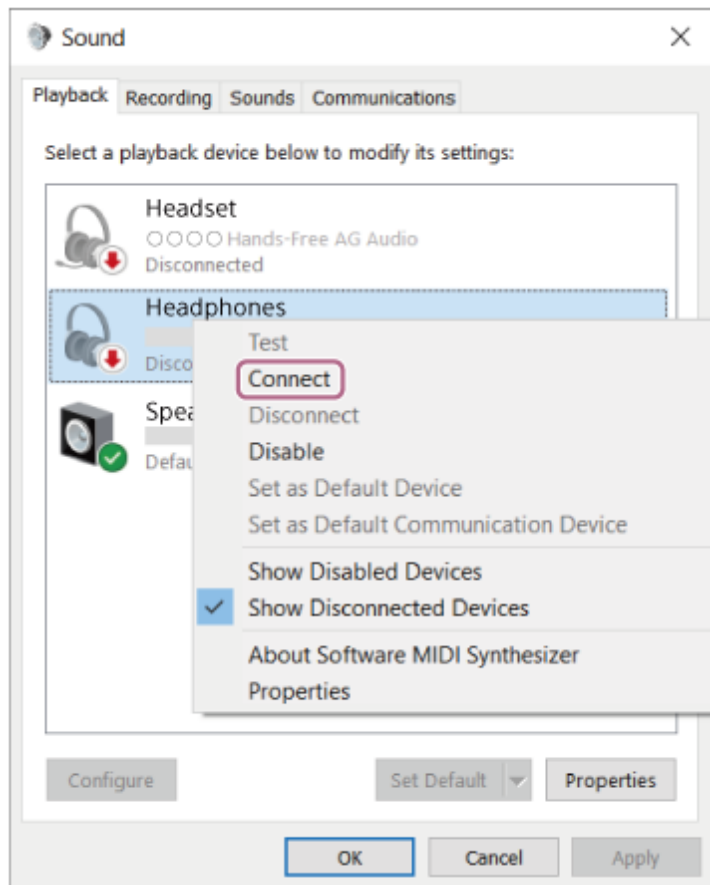
2. From the [Choose your output device] drop-down menu, select [Headphones (WI-OE600 Stereo)].



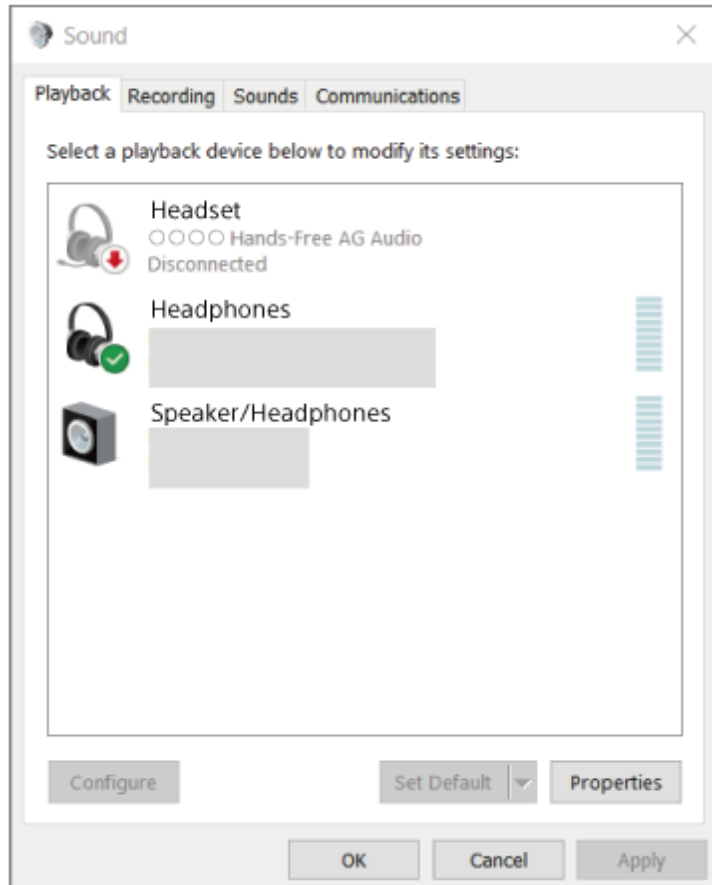
If [Headphones (WI-OE600 Stereo)] is not displayed on the drop-down menu, click [Sound Control Panel] and then right-click on the [Playback] tab of the [Sound] screen to check [Show Disconnected Devices].



3. Select [Connect] from the displayed menu.



The connection is established.
You will hear the voice guidance say, "Bluetooth connected".



- The operation above is an example. For more details, refer to the operating instructions supplied with the computer.

Note

- If the music playback sound quality is poor, check that the A2DP function which supports music playback connections is enabled in the computer settings. For more details, refer to the operating instructions supplied with the computer.
- If the last-connected Bluetooth device is placed near the headset, the headset may connect automatically to the device by simply turning on the headset. If this is the case, deactivate the Bluetooth function on the last-connected device or turn off the power.
- If you cannot connect your computer to the headset, delete the headset pairing information on your computer and perform the pairing again. As for the operations on your computer, refer to the operating instructions supplied with the computer.

Related Topic

- [How to make a wireless connection to Bluetooth devices](#)
- [Pairing and connecting with a computer \(Windows® 10\)](#)
- [Listening to music from a device via Bluetooth connection](#)
- [Disconnecting Bluetooth connection \(after use\)](#)

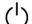
Connecting to a paired computer (Windows 8.1)

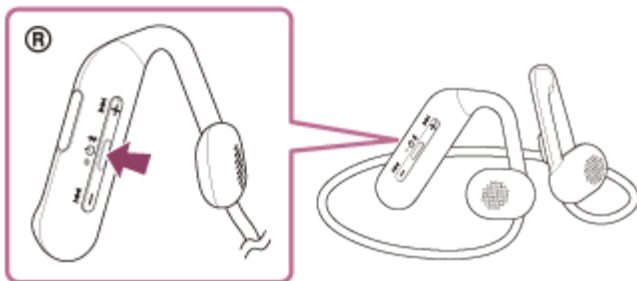
Before starting the operation, make sure of the following:

- Depending on the computer you are using, the built-in Bluetooth adaptor may need to be turned on. If you do not know how to turn on the Bluetooth adaptor or are unsure if your computer has a built-in Bluetooth adaptor, refer to the operating instructions supplied with the computer.

1 Wake the computer up if the computer is in standby (sleep) or hibernation mode.

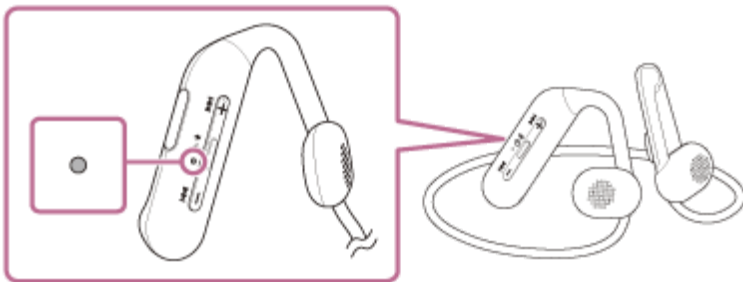
2 Turn on the headset.

Press and hold the  (power) button for about 2 seconds.



You will hear the voice guidance say, "Power on".

The indicator (blue) continues to flash even after you release your finger from the button.

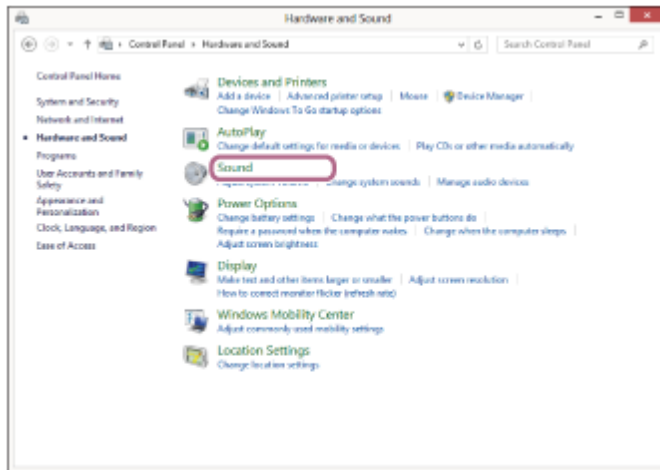
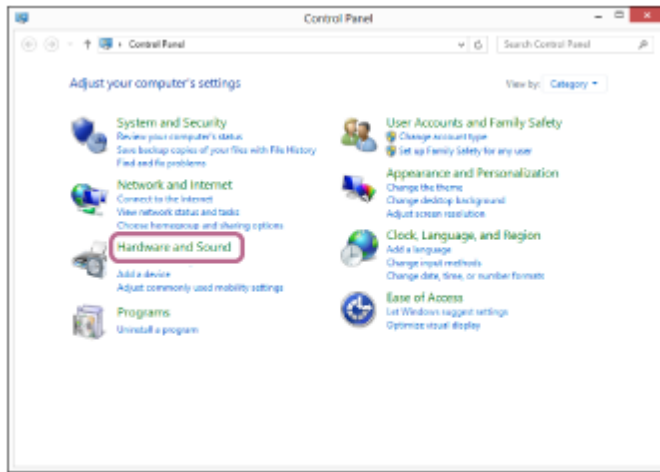


If the headset has automatically connected to the last connected device, you will hear the voice guidance say, "Bluetooth connected".

Check the connection status on the computer. If it is not connected, proceed to step **3**.

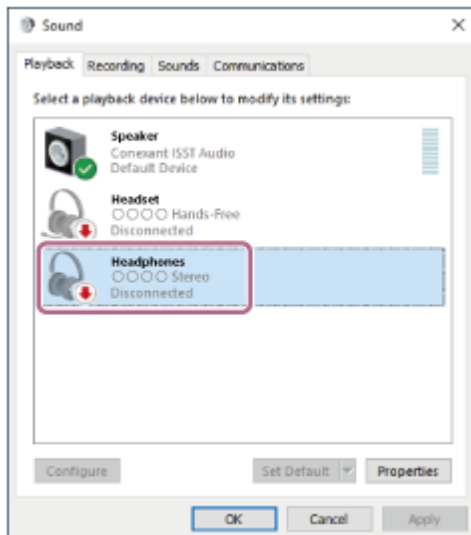
3 Select the headset using the computer.

1. Select [Desktop] on the Start screen.
2. Right-click the [Start] button, then select [Control Panel] from the pop-up menu.
3. Select [Hardware and Sound] - [Sound].

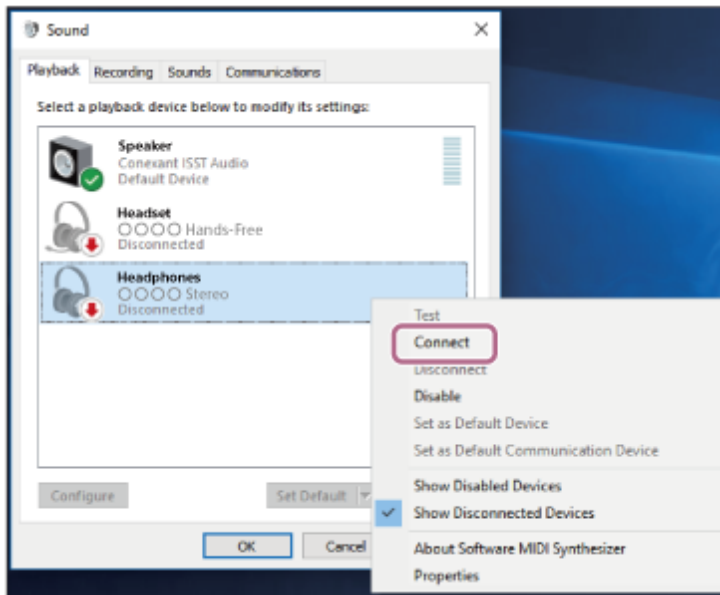


4. Right-click [WI-OE600].

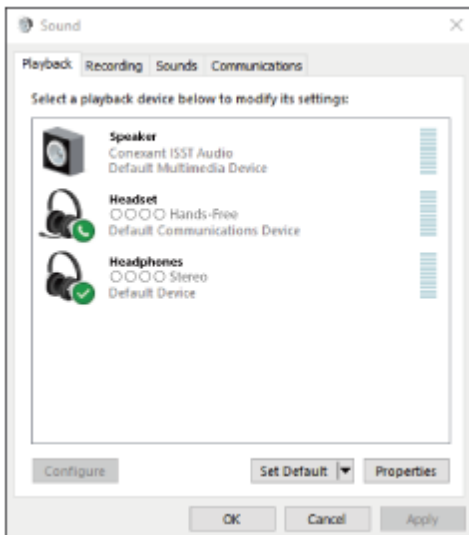
If [WI-OE600] is not displayed on the [Sound] screen, right-click on the [Sound] screen, then check [Show Disconnected Devices].



5. Select [Connect] from the displayed menu.



The connection is established.
You will hear the voice guidance say, “Bluetooth connected”.



Hint

- The operation above is an example. For more details, refer to the operating instructions supplied with the computer.

Note

- If the music playback sound quality is poor, check that the A2DP function which supports music playback connections is enabled in the computer settings. For more details, refer to the operating instructions supplied with the computer.
- If the last-connected Bluetooth device is placed near the headset, the headset may connect automatically to the device by simply turning on the headset. If this is the case, deactivate the Bluetooth function on the last-connected device or turn off the power.
- If you cannot connect your computer to the headset, delete the headset pairing information on your computer and perform the pairing again. As for the operations on your computer, refer to the operating instructions supplied with the computer.

Related Topic

- [How to make a wireless connection to Bluetooth devices](#)
- [Pairing and connecting with a computer \(Windows 8.1\)](#)

- [Listening to music from a device via Bluetooth connection](#)
- [Disconnecting Bluetooth connection \(after use\)](#)

5-043-991-11(1) Copyright 2022 Sony Corporation

Connecting to a paired computer (Mac)

Compatible OS

macOS (version 11 or later)

Before starting the operation, make sure of the following:

- Depending on the computer you are using, the built-in Bluetooth adaptor may need to be turned on. If you do not know how to turn on the Bluetooth adaptor or are unsure if your computer has a built-in Bluetooth adaptor, refer to the operating instructions supplied with the computer.
- Set the computer speaker to the ON mode.

If the computer speaker is set to the  "OFF" mode, no sound is heard from the headset.

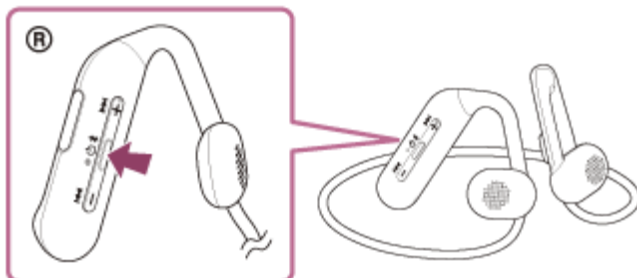
Computer speaker in the ON mode



1 Wake the computer up if the computer is in standby (sleep) or hibernation mode.

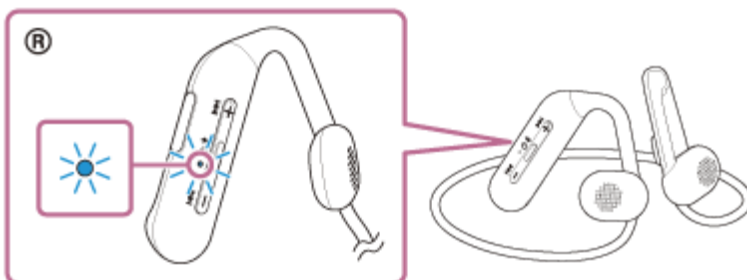
2 Turn on the headset.

Press and hold the  (power) button for about 2 seconds.



You will hear the voice guidance say, "Power on".

The indicator (blue) continues to flash even after you release your finger from the button.

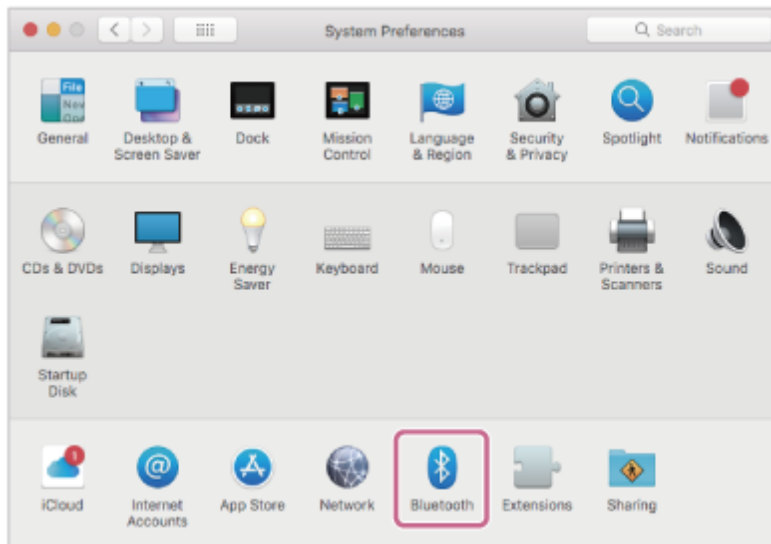


If the headset has automatically connected to the last connected device, you will hear the voice guidance say, "Bluetooth connected".

Check the connection status on the computer. If it is not connected, proceed to step **3**.

3 Select the headset using the computer.

1. Select [ (System Preferences)] - [Bluetooth] from the Dock at the bottom of the screen.



2. Click [WI-OE600] on the [Bluetooth] screen while pressing the computer Control button and select [Connect] from the pop-up menu.



The connection is established.

You will hear the voice guidance say, "Bluetooth connected".

Hint

- The operation above is an example. For more details, refer to the operating instructions supplied with the computer.

Note

- If the music playback sound quality is poor, check that the A2DP function which supports music playback connections is enabled in the computer settings. For more details, refer to the operating instructions supplied with the computer.
- If the last-connected Bluetooth device is placed near the headset, the headset may connect automatically to the device by simply turning on the headset. If this is the case, deactivate the Bluetooth function on the last-connected device or turn off the power.
- If you cannot connect your computer to the headset, delete the headset pairing information on your computer and perform the pairing again. As for the operations on your computer, refer to the operating instructions supplied with the computer.

Related Topic

- [How to make a wireless connection to Bluetooth devices](#)
- [Pairing and connecting with a computer \(Mac\)](#)
- [Listening to music from a device via Bluetooth connection](#)
- [Disconnecting Bluetooth connection \(after use\)](#)

Pairing and connecting with a Bluetooth device


The operation to register the device that you wish to connect to is called “pairing”. First, pair a device to use it with the headset for the first time.

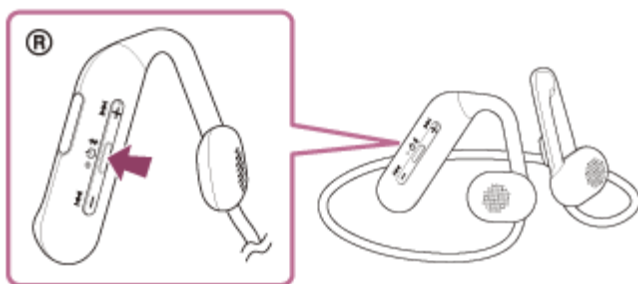
Before starting the operation, make sure of the following:

- The Bluetooth device is placed within 1 m (3 feet) of the headset.
- The headset is charged sufficiently.
- The operating instructions of the Bluetooth device is in hand.

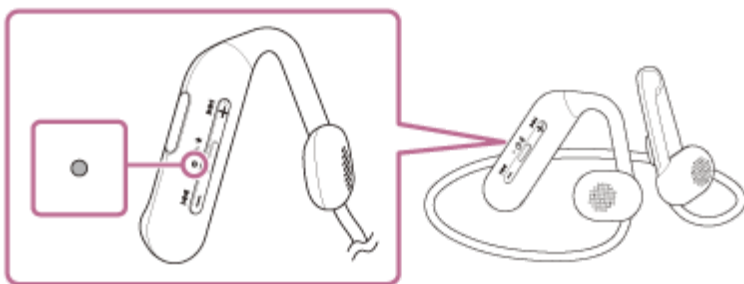
1 Enter pairing mode on this headset.

Turn on the headset when you pair the headset with a device for the first time after you bought it or after you initialized the headset (the headset has no pairing information). The headset enters pairing mode automatically. In this case, proceed to step 2.

When you pair a second or subsequent device (the headset already has pairing information for other devices), press and hold the  (Bluetooth) button for about 7 seconds to enter pairing mode manually.



The indicator (blue) repeatedly flashes twice in a row. You will hear the voice guidance say, “Bluetooth pairing”.



2 Perform the pairing procedure on the Bluetooth device to search for this headset.

[WI-OE600] will be displayed on the list of detected devices on the screen of the Bluetooth device.

If it is not displayed, repeat from step 1.

3 Select [WI-OE600] displayed on the screen of the Bluetooth device for pairing.

If Passkey (*) input is required, input “0000”.

* A Passkey may be called “Passcode”, “PIN code”, “PIN number”, or “Password”.

4 Make the Bluetooth connection from the Bluetooth device.

The headset and the Bluetooth device are paired and connected with each other.

You will hear the voice guidance say, "Bluetooth connected".
If they are not connected, see ["Connecting to a paired Bluetooth device"](#).

Hint

- The operation above is an example. For more details, refer to the operating instructions supplied with the Bluetooth device.
- To delete all Bluetooth pairing information, see ["Initializing the headset to restore factory settings"](#).

Note

- If pairing is not established within 5 minutes, pairing mode is canceled, and the headset turns off. In this case, start the operation again from step ①.
- Once Bluetooth devices are paired, there is no need to pair them again, except in the following cases:
 - Pairing information has been deleted after repair, etc.
 - When a 9th device is paired.
The headset can be paired with up to 8 devices. If a new device is paired after 8 devices are already paired, the registration information of the paired device with the oldest connection date is overwritten with the information for the new device.
 - When the pairing information for the headset has been deleted from the Bluetooth device.
 - When the headset is initialized.
All of the pairing information is deleted. In this case, delete the pairing information for the headset from the connected device and then pair them again.
- The headset can be paired with multiple devices, but can only play music from 1 paired device at a time.

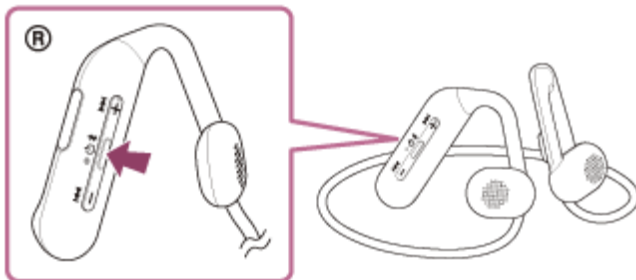
Related Topic

- [How to make a wireless connection to Bluetooth devices](#)
- [Connecting to a paired Bluetooth device](#)
- [Listening to music from a device via Bluetooth connection](#)
- [Disconnecting Bluetooth connection \(after use\)](#)
- [Initializing the headset to restore factory settings](#)

Connecting to a paired Bluetooth device

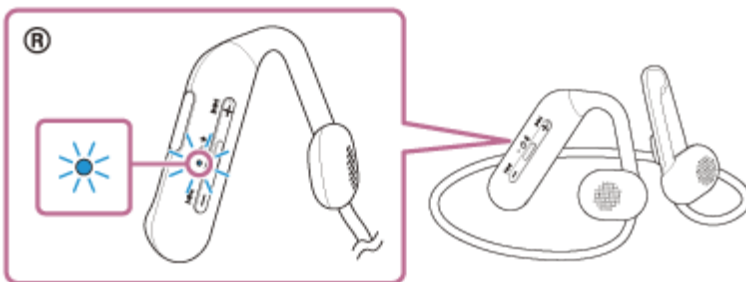
1 Turn on the headset.

Press and hold the  (power) button for about 2 seconds.



You will hear the voice guidance say, "Power on".

The indicator (blue) continues to flash even after you release your finger from the button.



If the headset has automatically connected to the last connected device, you will hear the voice guidance say, "Bluetooth connected".

Check the connection status on the Bluetooth device. If it is not connected, proceed to step **2**.

2 Make the Bluetooth connection from the Bluetooth device.

As for the operations on your Bluetooth device, refer to the operating instructions supplied with the Bluetooth device. When connected, you will hear the voice guidance say, "Bluetooth connected".

Hint

- The operation above is an example. For more details, refer to the operating instructions supplied with the Bluetooth device.

Note

- If the last-connected Bluetooth device is placed near the headset, the headset may connect automatically to the device by simply turning on the headset. If this is the case, deactivate the Bluetooth function on the last-connected device or turn off the power.
- If you cannot connect your Bluetooth device to the headset, delete the headset pairing information on your Bluetooth device and perform the pairing again. As for the operations on your Bluetooth device, refer to the operating instructions supplied with the Bluetooth device.

Related Topic

- [How to make a wireless connection to Bluetooth devices](#)
- [Pairing and connecting with a Bluetooth device](#)
- [Listening to music from a device via Bluetooth connection](#)
- [Disconnecting Bluetooth connection \(after use\)](#)

5-043-991-11(1) Copyright 2022 Sony Corporation

Connecting the headset to both a music player and a smartphone / mobile phone (multipoint connection)

Multipoint is a function which allows you to connect 2 Bluetooth devices to the headset and use one device for music playback (A2DP connection) and the other for calls (HFP/HSP connection).

When you wish to use a music player only for music playback and a smartphone only for calls, use a multipoint connection to the headset for each device. The connecting devices need to support the Bluetooth function.

1 Pair the headset with both the music player and the smartphone/mobile phone in advance.

2 Connect the headset with the music player.

Operate the music player to establish a Bluetooth connection with the headset.

3 Connect the headset to the smartphone/mobile phone.

Operate the smartphone/mobile phone to establish a Bluetooth connection with the headset.

Note

- If the smartphone or mobile phone was connected with the headset last time, an HFP or HSP connection is automatically established when the headset is turned on, and in some cases an A2DP connection is simultaneously established. In that case, connect from step **2** after disconnecting via smartphone/mobile phone operations.

Connecting the headset to 2 Android smartphones (multipoint connection)

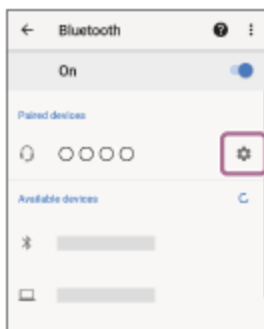
Usually, when you connect the headset to a smartphone, both the music playback function and the phone call function are connected simultaneously.

To make a multipoint connection using 2 smartphones to use one for listening to music and the other for making phone calls, set up to connect to only one function by operating the smartphone.

- 1 Pair the headset with both smartphones in advance.
- 2 Operate one of the smartphones to establish a Bluetooth connection with the headset.
- 3 Operate the smartphone connected to the headset, uncheck either [Call audio] (HFP) or [Media audio] (A2DP).

Operation example: For connecting only through media audio (A2DP)

Touch [Settings] - [Device connection] - [Bluetooth] - the setting icon next to [WI-OE600].



On the [Paired devices] screen, uncheck [Call audio].



- 4 Operate the smartphone to terminate the Bluetooth connection.
- 5 Operate the other smartphone to establish a Bluetooth connection with the headset.
- 6 In the same way as in step 3, uncheck the function that you did not uncheck in step 3.
- 7 Operate the first smartphone to establish a Bluetooth connection with the headset.

Both smartphones are connected to the headset with only one function enabled.

Hint

- The operation above is an example. For more details, refer to the operating instructions supplied with the Android smartphone.

Note

- When using multipoint connection, the remaining battery charge of the headset will not be correctly displayed on the screen of the device that is connected for listening to music (A2DP).

Related Topic

- [Checking the remaining battery charge](#)

5-043-991-11(1) Copyright 2022 Sony Corporation

Connecting the headset to an Android smartphone and an iPhone (multipoint connection)

Usually, when you connect the headset to a smartphone, both the music playback function and the phone call function are connected simultaneously.

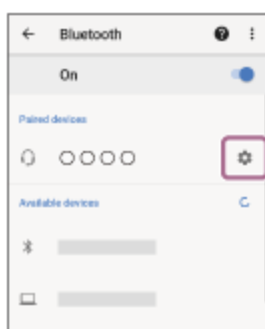
To make a multipoint connection using a smartphone and an iPhone to use one for listening to music and the other for making phone calls, change the settings on the smartphone so that only one of the functions is connected. Connect the smartphone before connecting the iPhone.

You cannot set the iPhone to connect one function only.

- 1 **Pair the headset with both the smartphone and the iPhone in advance.**
- 2 **Operate the smartphone to establish a Bluetooth connection with the headset.**
- 3 **Operate the smartphone connected to the headset, uncheck either [Call audio] (HFP) or [Media audio] (A2DP).**

Operation example: For connecting only through media audio (A2DP)

Touch [Settings] - [Device connection] - [Bluetooth] - the setting icon next to [WI-OE600].



On the [Paired devices] screen, uncheck [Call audio].



- 4 **Operate the iPhone to establish a Bluetooth connection with the headset.**

The iPhone is connected with the function unchecked in step 3 .

Hint

- The operation above is an example. For more details, refer to the operating instructions supplied with the Android smartphone and iPhone.

Note

- When using multipoint connection, the remaining battery charge of the headset will not be correctly displayed on the screen of the device that is connected for listening to music (A2DP).

Related Topic

- [Checking the remaining battery charge](#)

5-043-991-11(1) Copyright 2022 Sony Corporation

Listening to music from a device via Bluetooth connection

If your Bluetooth device supports the following profiles, you can enjoy listening to music and control the device from your headset via Bluetooth connection.

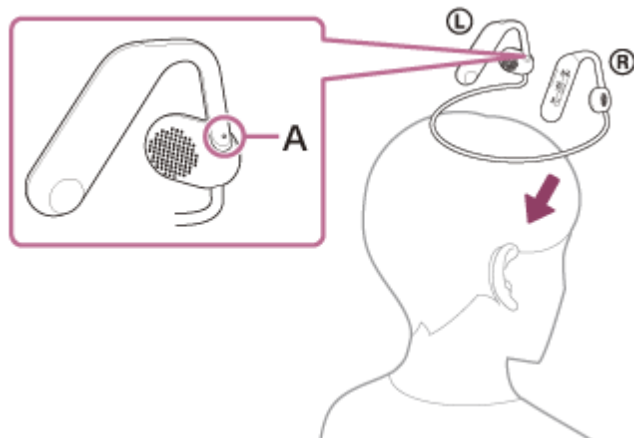
- A2DP (Advanced Audio Distribution Profile)
You can enjoy high-quality music wirelessly.
- AVRCP (Audio Video Remote Control Profile)
You can adjust the volume, etc.

The operation may vary depending on the Bluetooth device. Refer to the operating instructions supplied with the Bluetooth device.

1 Connect the headset to a Bluetooth device.

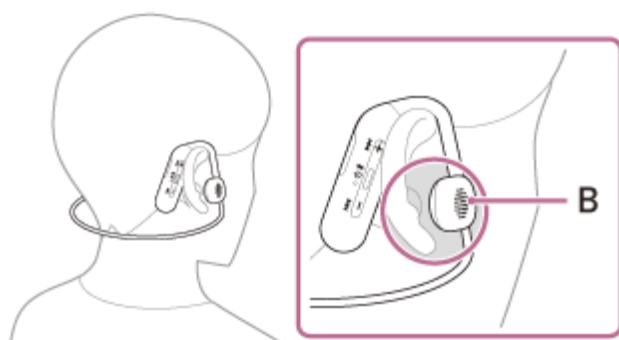
2 Wear the headset on your ears.

1. Position the neckband at the rear of your head so that the remote control component is on your right side, and bring down the headset from above your head.
There is a tactile dot on the left unit.

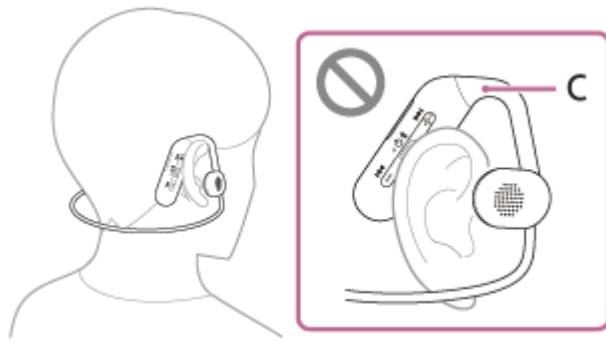


A: Tactile dot

2. Hang the ear hangers of the left and right units firmly on your ears.
When you wear the headset, a certain space is left between the housing and your ear.



B: Housing

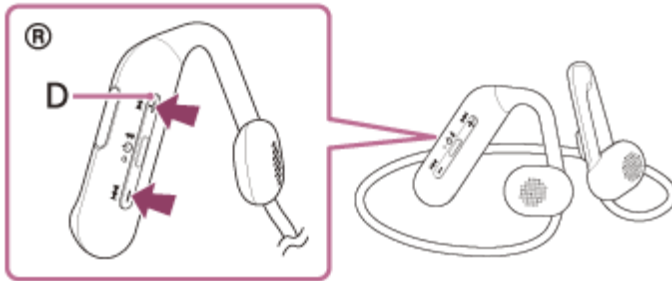


C: Ear hanger

3 Operate the Bluetooth device to start playback and adjust the volume to a moderate level.

4 Adjust the volume by pressing the +/- buttons of the headset.

There is a tactile dot on the + button.



D: Tactile dot

When the volume reaches the maximum or minimum, an alarm sounds.

Hint

- The headset supports SCMS-T content protection. You can enjoy music and other audio on the headset from a device such as a mobile phone or portable TV that supports SCMS-T content protection.
- Depending on the Bluetooth device, it may be necessary to adjust the volume or set the audio output setting on the device.
- The headset volume during a call and during music playback can be independently adjusted. Changing the call volume does not change the volume of music playback and vice versa.

Note

- If the communication condition is poor, the Bluetooth device may react incorrectly to the operation on the headset.

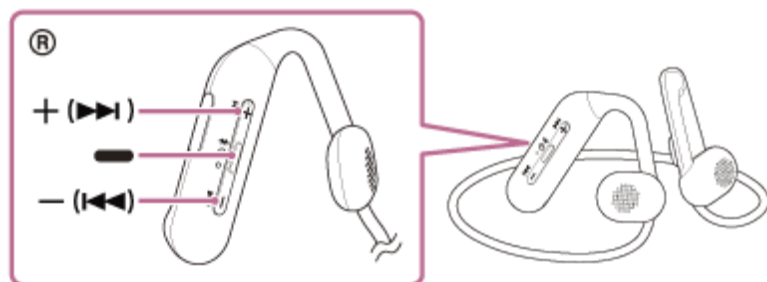
Related Topic

- [How to make a wireless connection to Bluetooth devices](#)
- [Controlling the audio device \(Bluetooth connection\)](#)

Wireless Stereo Headset
WI-OE600

Controlling the audio device (Bluetooth connection)

If your Bluetooth device supports the device operating function (compatible profile: AVRCP), the following operations are available. The available functions may vary depending on the Bluetooth device, so refer to the operating instructions supplied with the device.



Each button has the following function:

— (play)

- Play: Press once while paused.
- Pause: Press once during playback.

– (volume –)/ ◀◀ (previous)

+ (volume +)/ ▶▶ (next)

- Adjust the volume.
- Press and hold until you hear a beep to skip to the beginning of the previous track (or the current track during playback)/beginning of the next track. After releasing the button, press it repeatedly within 1 second to hear a beep and skip to the beginning of the previous/next track.

Note

- If the communication condition is poor, the Bluetooth device may react incorrectly to the operation on the headset.
- The available functions may vary depending on the connected device, the music software, or app used. In some cases, it may operate differently or may not work even when the operations described above are performed.

Disconnecting Bluetooth connection (after use)

1 Disconnect the Bluetooth connection by operating the Bluetooth device.

When disconnected, you will hear the voice guidance say, "Bluetooth disconnected".

2 Turn off the headset.

You will hear the voice guidance say, "Power off".

Hint

- When you finish playing music, the Bluetooth connection may terminate automatically depending on the Bluetooth device.

Related Topic

- [Turning off the headset](#)

Supported codecs

A codec is an “audio coding algorithm” used when transmitting sound wirelessly via Bluetooth connection. The headset supports the following 2 codecs for music playback via an A2DP connection: SBC and AAC.

- SBC

This is an abbreviation for Subband Codec.

SBC is the standard audio coding technology used in Bluetooth devices.

All Bluetooth devices support SBC.

- AAC

This is an abbreviation for Advanced Audio Coding.

AAC is mainly used in Apple products such as iPhone that can provide a higher sound quality than that of SBC.

When music in one of the above codecs is transmitted from a connected device, the headset switches to that codec automatically and plays back the music in the same codec.

If the connected device supports a codec of higher sound quality than SBC, you may need to set the device beforehand to enjoy music with the desired codec from the supported codecs.

Refer to the operating instructions supplied with the device regarding setting the codec.

Receiving a call

You can enjoy a hands-free call with a smartphone or mobile phone that supports the Bluetooth profile HFP (Hands-free Profile) or HSP (Headset Profile), via Bluetooth connection.


- If your smartphone or mobile phone supports both HFP and HSP, set it to HFP.
- The operation may vary depending on the smartphone or mobile phone. Refer to the operating instructions supplied with the smartphone or mobile phone.
- Depending on the connected device or the application you are using, the functions may not work properly even if you try to operate them with the headset.

Ring tone

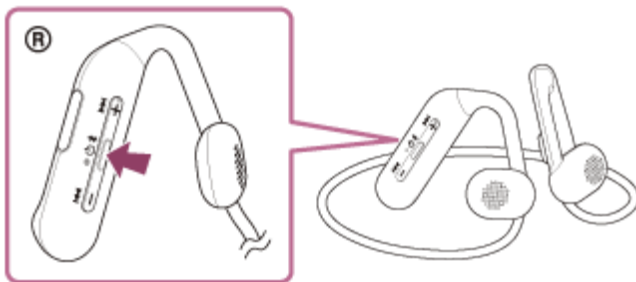
When an incoming call arrives, a ring tone will be heard from the headset, and the indicator (blue) flashes quickly. You will hear either of following ring tones, depending on your smartphone or mobile phone.

- Ring tone set on the headset
- Ring tone set on the smartphone or mobile phone
- Ring tone only for a Bluetooth connection set on the smartphone or mobile phone

1 Connect the headset to a smartphone or mobile phone via Bluetooth connection beforehand.

2 When you hear the ring tone, press the  (call) button on the headset and receive the call.

When you receive an incoming call during music playback, playback pauses and a ring tone will be heard from the headset.



You can talk using the microphone on the headset.



A: Microphone on the remote control component

If no ring tone is heard via the headset

- The headset may not be connected with the smartphone or mobile phone over HFP or HSP. Check the connection status on the smartphone or mobile phone.
- If music playback does not pause automatically, operate the headset to pause playback.

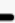
3 Adjust the volume by pressing the +/- buttons of the headset.

When the volume reaches the maximum or minimum, an alarm sounds.

4 When you finish your phone call, press the (call) button on the headset to end the call.

If you received a call during music playback, music playback resumes automatically after ending the call.

Hint

- When receiving a call by operating smartphones or mobile phones, some smartphones or mobile phones may receive a call with the phone instead of the headset. With an HFP or HSP connection, switch the call to the headset by pressing and holding the  (call) button for about 2 seconds or by using your smartphone or mobile phone.
- Volume for a call can be adjusted during a telephone conversation only.
- The headset volume during a call and during music playback can be independently adjusted. Even if you change the volume during a call, the volume of music playback does not change.

Note

- Depending on the connected device or playback application you are using, when you receive an incoming call during music playback, playback may not resume automatically even after you finish the call.
- Use a smartphone or mobile phone at least 50 cm (19.69 in.) away from the headset. Noise may result if the smartphone or mobile phone is too close to the headset.
- If the headset's microphone rubs against your clothing, etc., noise may interfere with your voice on the call. When talking on the phone, be careful not to make the microphone's audio capture hole come in contact with your clothing, etc.

Related Topic

- [How to make a wireless connection to Bluetooth devices](#)
- [Making a call](#)
- [Functions for a phone call](#)

Making a call

You can enjoy a hands-free call with a smartphone or mobile phone that supports the Bluetooth profile HFP (Hands-free Profile) or HSP (Headset Profile), via Bluetooth connection.

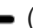
- If your smartphone or mobile phone supports both HFP and HSP, set it to HFP.
- The operation may vary depending on the smartphone or mobile phone. Refer to the operating instructions supplied with the smartphone or mobile phone.
- Depending on the connected device or the application you are using, the functions may not work properly even if you try to operate them with the headset.

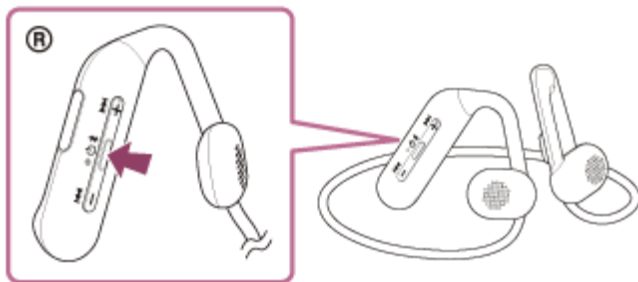
1 Connect the headset to a smartphone or mobile phone via Bluetooth connection.

2 Operate your smartphone or mobile phone to make a call.

When you make a call, the dial tone is heard from the headset.

If you make a call during music playback, playback pauses.

If no dial tone is heard via the headset, switch the call device to the headset by using your smartphone or mobile phone or by pressing and holding the  (call) button for about 2 seconds.



You can talk using the microphone on the headset.



A: Microphone on the remote control component

3 Adjust the volume by pressing the +/- buttons of the headset.

When the volume reaches the maximum or minimum, an alarm sounds.

4 When you finish your phone call, press the (call) button on the headset to end the call.

If you made a call during music playback, music playback resumes automatically after ending the call.

Hint

- Volume for a call can be adjusted during a telephone conversation only.
- The headset volume during a call and during music playback can be independently adjusted. Even if you change the volume during a call, the volume of music playback does not change.

Note

- Depending on the connected device or playback application you are using, when you make a call during music playback, playback may not resume automatically even after you finish the call.
- Use a smartphone or mobile phone at least 50 cm (19.69 in.) away from the headset. Noise may result if the smartphone or mobile phone is too close to the headset.
- If the headset's microphone rubs against your clothing, etc., noise may interfere with your voice on the call. When talking on the phone, be careful not to make the microphone's audio capture hole come in contact with your clothing, etc.

Related Topic

- [How to make a wireless connection to Bluetooth devices](#)
- [Receiving a call](#)
- [Functions for a phone call](#)

Functions for a phone call

The functions available during a call may vary depending on the profile supported by your smartphone or mobile phone. In addition, even if the profile is the same, the available functions may vary depending on the smartphone or mobile phone.

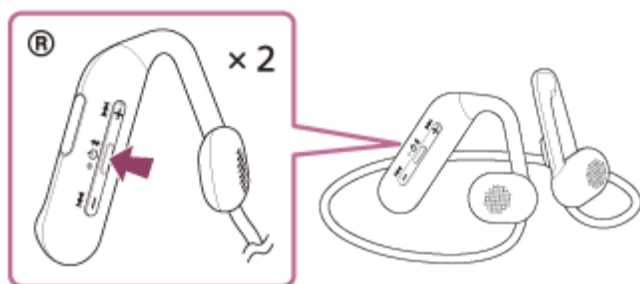
Depending on the connected device or the application you are using, the functions may not work properly even if you try to operate them with the headset.

Refer to the operating instructions supplied with the smartphone or mobile phone.

Supported profile: HFP (Hands-free Profile)

During standby/music playback

- Press the **■** (call) button twice in 0.5 seconds to start up the voice dial function of the smartphone/mobile phone, or activate the Google™ app on the Android smartphone or Siri on the iPhone.



Outgoing call

- Press the **■** (call) button once to cancel an outgoing call.
- Press and hold the **■** (call) button for about 2 seconds to change the call device back and forth from the headset to the smartphone/mobile phone.

Incoming call

- Press the **■** (call) button once to answer a call.
- Press and hold the **■** (call) button for about 2 seconds to reject a call.

During call

- Press the **■** (call) button once to finish a call.
- Press and hold the **■** (call) button for about 2 seconds to change the call device back and forth from the headset to the smartphone/mobile phone.

Supported profile: HSP (Headset Profile)


Outgoing call

- Press the **■** (call) button once to cancel an outgoing call.

Incoming call

- Press the **■** (call) button once to answer a call.

During call

- Press the  (call) button once to finish a call.

Related Topic

- [Receiving a call](#)
- [Making a call](#)

5-043-991-11(1) Copyright 2022 Sony Corporation

Making a video call on your computer

When you make a video call on your computer, you can talk wirelessly from your headset.

- 1 Connect the headset to your computer via Bluetooth connection.**
- 2 Launch the video calling application on your computer.**
- 3 Check the settings (*) of the video calling application.**
 - When you make a video call on your computer, select calling connections (HFP/HSP) and not music playback connections (A2DP). If you select music playback connections, a video call may not be available.
 - On the speaker settings, select calling connections [Headset (WI-OE600 Hands-Free)] (**). ([Headphones (WI-OE600 Stereo)] (**) is for music playback connections.)
 - On the microphone settings, select calling connections [Headset (WI-OE600 Hands-Free)] (**).
 - Depending on the video calling application you are using, calling connections [Headset (WI-OE600 Hands-Free)] (**) or music playback connections [Headphones (WI-OE600 Stereo)] (**) may not be selectable on the speaker or microphone settings, and only [WI-OE600] may be displayed. If this is the case, select [WI-OE600].
 - As for frequently asked questions and answers, refer to the customer support website.

* Depending on the video calling application you are using, this function may not be available.

** Names may vary according to the computer or the video calling application you are using.

Hint

- When the settings of the video calling application cannot be checked or calling connections [Headset (WI-OE600 Hands-Free)] cannot be selected, select [Headset (WI-OE600 Hands-Free)] on the settings of your computer to make connections. See [“Connecting to a paired computer \(Windows 10\)”](#), [“Connecting to a paired computer \(Windows 8.1\)”](#) or [“Connecting to a paired computer \(Mac\)”](#).

Note

- Depending on the computer or application you are using, the headset may not work properly during a video call. This may be improved by restarting the computer.

Related Topic

- [How to make a wireless connection to Bluetooth devices](#)
- [Pairing and connecting with a computer \(Windows® 10\)](#)
- [Pairing and connecting with a computer \(Windows 8.1\)](#)
- [Pairing and connecting with a computer \(Mac\)](#)
- [Connecting to a paired computer \(Windows 10\)](#)
- [Connecting to a paired computer \(Windows 8.1\)](#)
- [Connecting to a paired computer \(Mac\)](#)
- [Disconnecting Bluetooth connection \(after use\)](#)
- [Customer support websites](#)

Disconnecting Bluetooth connection (after use)

1 Disconnect the Bluetooth connection by operating the Bluetooth device.

When disconnected, you will hear the voice guidance say, "Bluetooth disconnected".

2 Turn off the headset.

You will hear the voice guidance say, "Power off".

Hint

- When you finish playing music, the Bluetooth connection may terminate automatically depending on the Bluetooth device.

Related Topic

- [Turning off the headset](#)

Using the voice assist function (Google app)

By using the Google app feature that comes with the Android smartphone, you can speak to the headset's microphone to operate the Android smartphone.

1 Set the assist and voice input selection to the Google app.

On the Android smartphone, select [Settings] - [Apps & notifications] - [Advanced] - [Default apps] - [Assist & voice input], and set [Assist app] to the Google app.

The operation above is an example. For details, refer to the operating instructions of the Android smartphone.

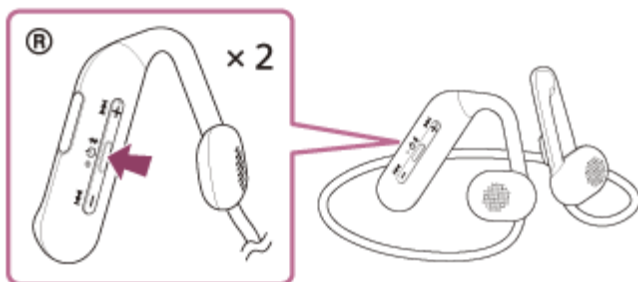
Note: The latest version of the Google app may be required.

For details on the Google app, refer to the operating instructions or the support website of the Android smartphone, or the Google Play store website.

The Google app may not be activated from the headset depending on specifications of the Android smartphone.

2 Connect the headset to the Android smartphone via Bluetooth connection.

3 When the Android smartphone is in standby or playing music, press the **■** (play/call) button on the headset twice in 0.5 seconds.



The Google app is activated.


4 Make a request to the Google app through the headset's microphone.



A: Microphone on the remote control component

For details on the apps which work with the Google app, refer to the operating instructions of the Android smartphone.

After activating the Google app, the voice command is canceled when a certain time has passed without requests.

- The Google app cannot be activated when you say “Ok Google” even when the Android smartphone’s “Ok Google” setting is on.
- If the headset’s microphone rubs against your clothing, etc., noise may interfere with your voice input. When inputting a voice command, be careful not to make the microphone’s audio capture hole come in contact with your clothing, etc.
- The Google app may not be activated depending on specifications of the smartphone or application version.
- The Google app does not work when connected to a device not compatible with the voice assist function.
- Be careful because the headset will turn off when you press and hold the  (play/call) button.

Using the voice assist function (Siri)

By using the Siri feature that comes with iPhone, you can speak to the headset's microphone to operate the iPhone.

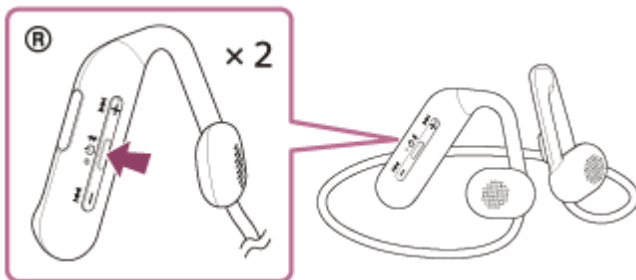
1 Turn Siri on.

On iPhone, select [Settings] - [Siri & Search] to turn [Press Home for Siri] and [Allow Siri When Locked] on. The operation above is an example. For details, refer to the operating instructions of the iPhone.

Note: For details on Siri, refer to the operating instructions or support website of the iPhone.

2 Connect the headset to the iPhone via Bluetooth connection.

3 When the iPhone is in standby or playing music, press the (play/call) button on the headset twice in 0.5 seconds.



Siri is activated.


4 Make a request to Siri through the headset's microphone.



A: Microphone on the remote control component

For details on the apps which work with Siri, refer to the operating instructions of the iPhone.
After activating Siri, when a certain time has passed without requests, Siri will be deactivated.

Note

- Siri cannot be activated when you say "Hey Siri" even when the iPhone's "Hey Siri" setting is on.
- If the headset's microphone rubs against your clothing, etc., noise may interfere with your voice input. When inputting a voice command, be careful not to make the microphone's audio capture hole come in contact with your clothing, etc.
- Siri may not be activated depending on specifications of the smartphone or application version.
- Be careful because the headset will turn off when you press and hold the  (play/call) button.

Precautions

On Bluetooth communications

- Bluetooth wireless technology operates within a range of about 10 m (30 feet). The maximum communication distance may vary depending on the presence of obstacles (people, metal objects, walls, etc.) or the electromagnetic environment.
- Microwaves emitting from a Bluetooth device may affect the operation of electronic medical devices. Turn off the headset and other Bluetooth devices in the following locations, as it may cause an accident:
 - in hospitals, near priority seating in trains, locations where inflammable gas is present, near automatic doors, or near fire alarms.
- This product emits radio waves when used in wireless mode. When used in wireless mode on an airplane, follow flight crew directions regarding permissible use of products in wireless mode.
- The audio playback on the headset may be delayed from that on the transmitting device, due to the characteristics of Bluetooth wireless technology. As a result, the sound may not be in sync with the image when viewing movies or playing games.
- The headset supports security functions that comply with the Bluetooth standard as a means of ensuring security during communication using Bluetooth wireless technology. However, depending on the configured settings and other factors, this security may not be sufficient. Be careful when communicating using Bluetooth wireless technology.
- Sony shall assume no responsibility for any damages or loss resulting from information leaks that occur when using Bluetooth communications.
- Bluetooth connections with all Bluetooth devices cannot be guaranteed.
 - Bluetooth devices connected with the headset must comply with the Bluetooth standard prescribed by Bluetooth SIG, Inc., and must be certified as compliant.
 - Even when a connected device complies with the Bluetooth standard, there may be cases where the characteristics or specifications of the Bluetooth device make it unable to connect, or result in different control methods, display, or operation.
 - When using the headset to perform hands-free talking on the phone, noise may occur depending on the connected device or the communication environment.
- Depending on the device to be connected, it may require some time to start communications.

Note on static electricity

- If you use the headset when the air is dry, you may experience discomfort due to static electricity accumulated on your body. This is not a malfunction of the headset. You can reduce the effect by wearing clothes made of natural materials that do not easily generate static electricity.

Notes on wearing the headset

- After use, remove the headset from your ears slowly.

Other notes

- Do not subject the headset to excessive shock as it is a precision device.
- The Bluetooth function may not work with a mobile phone, depending on the signal conditions and the surrounding environment.
- If you experience discomfort while using the headset, stop using it immediately.
- If water or foreign matter enters the headset, it may result in fire or electric shock. If water or foreign matter enters the headset, stop use immediately and consult your nearest Sony dealer.

Cleaning the headset

- When the headset exterior is dirty, wipe it clean with a soft dry cloth. If the headset is particularly dirty, soak a cloth in diluted neutral detergent, and wring it well before using it to clean the headset. Do not use solvents such as thinner, benzene, or alcohol, as they may damage the finish on the surface of the headset or cause other damages.

Do not use the headset near medical devices

- Radio waves can affect cardiac pacemakers and medical devices. Do not use the headset in crowded places such as crowded trains or inside a medical institution.
- The headset has magnet(s) which may interfere with pacemakers, programmable shunt valves for hydrocephalus treatment, or other medical devices. Do not place the headset close to persons who use such medical devices. Consult your doctor before using the headset if you use any such medical device.

Keep the headset away from the magnetic card

- The headset has magnets. If you bring a magnetic card close to the headset, the card magnet may be affected and become unusable.

Wireless Stereo Headset
WI-OE600

To prevent burning or malfunction due to getting wet

On water resistant performance of the headset

Avoid situations such as the following and be careful not to get moisture or dirt on the headset.

If the headset gets wet or dirty, see [“If the headset gets wet”](#) and clean them as described before use.

- Touching the headset without drying wet hands after doing housework in the kitchen or washing hands in the washroom



- Putting the headset in a bag with a cold PET bottle



- Spilling a drink while eating or drinking



- Washing the headset in water



5-043-991-11(1) Copyright 2022 Sony Corporation

If the headset gets wet

On water resistant performance of the headset

- The water resistant specifications of this headset are equivalent to IPX4 in IEC 60529 "Degrees of protection against ingress of water (IP Code)", which specifies the degree of protection provided against the entry of water. Unless the headset is used correctly, water may get into the headset and cause fire, electrocution, or malfunctions. Note the following cautions carefully and use the headset correctly.
IPX4: Protected against water splashing from any direction.
(Make sure that the USB Type-C port cover is closed securely when you use the headset.)
- The front and rear sides of the headset housings (the perforated parts for sound output and air vent) are not completely watertight.
If any water droplets are left in the perforated parts of the front and rear sides of the headset housings or in the microphone hole, the following symptoms may occur temporarily, but they are not malfunctions.
 - Sounds become difficult to hear.
 - Unusual sounds are heard.
 - Voices during phone calls become difficult to hear.

Liquids that the water resistant performance specifications of the headset apply to

Applicable:	Fresh water, tap water, perspiration
Not applicable:	Liquids other than those above (examples: soapy water, detergent water, water with bath agents, shampoo, hot spring water, hot water, pool water, seawater, etc.)

The water resistant performance of the headset is based on measurements performed by Sony under the conditions described above. Note that malfunctions resulting from water immersion caused by customer misuse are not covered by the warranty.

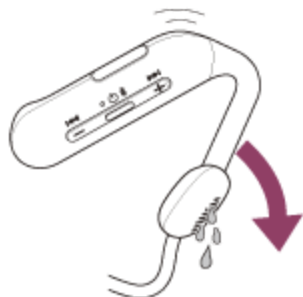
To maintain water resistant performance

Carefully note the precautions below to ensure proper use of the headset.

- Make sure the USB Type-C port cover is closed securely when using the headset. If there is any foreign material on the cover or it is not completely closed, water resistant performance cannot be maintained. Water may get inside and cause the headset to malfunction.
- Make sure the sound output part of the headset does not come in contact with strong splashes of water.
- Do not drop the headset into water, and do not use underwater.
- Do not allow the headset to remain wet in a cold environment, as the water may freeze. To prevent malfunction, make sure to wipe off any water after use.
- Do not place the headset in water or use it in a humid place such as a bathroom.
- Do not drop the headset or expose it to mechanical shock. Doing so may deform or damage the headset, resulting in deterioration of water resistance performance.
- If the headset gets wet,
 1. Use a soft dry cloth to wipe off any water that gets on the headset.
 2. Turn the microphone hole downward and gently tap it about 10 times on a dry cloth, etc. to remove any water collected inside.



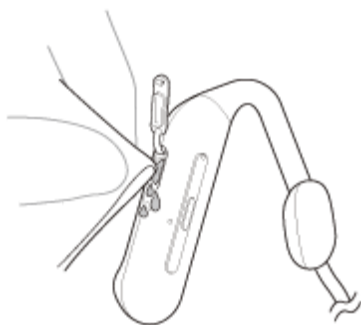
3. Turn the housing downward and tap it about 10 times on a dry cloth, etc. to remove any water collected inside.



4. Leave the headset to dry in room temperature.

- If the headset units are charged while they are wet with sweat, etc., the charging ports will corrode. Before charging, wipe off any moisture with a soft dry cloth and leave to dry in room temperature.

Repairs in case of a malfunction without care are not covered by the free warranty.



- If the charging port of the headset gets dirty, wipe it clean with a soft dry cloth.
- If the headset is cracked or deformed, refrain from using the headset near water, or contact your nearest Sony dealer.

Wireless Stereo Headset
WI-OE600

Licenses

- This product contains software that Sony uses under a licensing agreement with the owner of its copyright. We are obligated to announce the contents of the agreement to customers under requirement by the owner of copyright for the software. Please access the following URL and read the contents of the license.
<https://rd1.sony.net/help/mdr/sl/22/>
- Services offered by third parties may be changed, suspended, or terminated without prior notice. Sony does not bear any responsibility in these sorts of situations.

Wireless Stereo Headset
WI-OE600

Trademarks

- Microsoft and Windows are registered trademarks or trademarks of Microsoft Corporation in the United States and/or other countries.
- iPhone, iPod touch, macOS, Mac and Siri are trademarks of Apple Inc., registered in the U.S. and other countries.
- IOS is a trademark or registered trademark of Cisco in the U.S. and other countries and is used under license.
- Google, Android and Google Play are trademarks of Google LLC.
- The Bluetooth® word mark and logos are registered trademarks owned by Bluetooth SIG, Inc. and any use of such marks by Sony Group Corporation and its subsidiaries is under license.
- USB Type-C® and USB-C® are registered trademarks of USB Implementers Forum.
- All other trademarks and registered trademarks are trademarks or registered trademarks of their respective holders. In this manual, TM and ® marks are not specified.

Wireless Stereo Headset
WI-OE600

Customer support websites

For customers in the U.S.A, Canada, and Latin America:

<https://www.sony.com/am/support>

What can I do to solve a problem?

If the headset does not function as expected, try the following steps to resolve the issue.

- Find the symptoms of the issue in this Help Guide, and try any corrective actions listed.
- Charge the headset.
You may be able to resolve some issues by charging the headset battery.
- Restart the device that is being connected to the headset.
You may be able to resolve some issues by restarting the device being connected such as your computer or smartphone.
- Reset the headset.
- Initialize the headset.
This operation resets volume settings, etc. to the factory settings, and deletes all pairing information.
- Look up information on the issue on the customer support website.

If the operations above do not work, consult your nearest Sony dealer.

Related Topic

- [Charging the headset](#)
- [Customer support websites](#)
- [Resetting the headset](#)
- [Initializing the headset to restore factory settings](#)

Wireless Stereo Headset
WI-OE600

Unable to turn on the headset.

- Make sure the battery is fully charged.
 - The headset cannot be turned on while charging the battery. Remove the USB Type-C cable and turn on the headset.
 - Reset the headset.
 - Initialize the headset, and pair the headset and the device again.
-

Related Topic

- [Charging the headset](#)
- [Checking the remaining battery charge](#)
- [Turning on the headset](#)
- [Resetting the headset](#)
- [Initializing the headset to restore factory settings](#)

Charging cannot be done.

Common

- Be sure to use the supplied USB Type-C cable.
- It is recommended to charge in a place with an ambient temperature between 15 °C and 35 °C (59 °F - 95 °F). Efficient charging may not be possible beyond this range.
- Reset the headset.
- Initialize the headset, and pair the headset and the device again.

When charging with a USB AC adaptor

- Make sure that the USB AC adaptor is firmly connected to the AC outlet.
- When using a commercially available USB AC adaptor, use one capable of supplying an output current of 0.5 A (500 mA) or more.

When charging with a computer

- Check that the supplied USB Type-C cable is properly connected to the USB port of the computer.
- Check that the computer is turned on. Wake the computer up if the computer is in standby (sleep) or hibernation mode.
- Check that the headset and the computer are directly connected, and not via a USB hub.
- There may be a problem with the USB port of the connected computer. Try connecting to another USB port on the computer if one is available.
- Update the OS of the computer.
- Restart the computer and try the USB connection procedure again in cases other than those stated above.

Related Topic

- [Charging the headset](#)
- [Resetting the headset](#)
- [Initializing the headset to restore factory settings](#)

Wireless Stereo Headset
WI-OE600

Charging time is too long.

- When charging with a computer, check that the headset and the computer are directly connected, and not via a USB hub.
- Check that you are using the supplied USB Type-C cable.
- It is recommended to charge in a place with an ambient temperature between 15 °C and 35 °C (59 °F - 95 °F). Efficient charging may not be possible beyond this range.
- Restart the computer and try the USB connection procedure again in cases other than those stated above.

Related Topic

- [Charging the headset](#)

Wireless Stereo Headset
WI-OE600

The available operating time is short (the duration of the battery is short).

- If the headset is not used for a long time, the rechargeable battery usage hours may be reduced. However, the battery life will improve after charging and discharging several times. If you store the headset for a long time, charge the battery once every 6 months to avoid over-discharge.
 - It is recommended to charge in a place with an ambient temperature between 15 °C and 35 °C (59 °F - 95 °F). Efficient charging may not be possible beyond this range. If the problem persists, consult your nearest Sony dealer.
 - If the usage hours of the built-in rechargeable battery decrease significantly, the battery should be replaced. Consult your nearest Sony dealer.
-

Related Topic

- [Available operating time](#)

No sound

- Check that both the headset and the connected device are turned on.
- When playing music, check that the headset and the transmitting Bluetooth device are connected via an A2DP Bluetooth connection.
- When you connect the headset to 2 devices simultaneously with multipoint connection, depending on the connected device, the device may keep sending the silent signal even if the playback of the music or video is stopped. In this case, the headset remains connected with the device, and the connection may not be changed to another device. If the sound from the second device cannot be heard after the playback is stopped on the first device, operate in the following order and check whether the situation has improved.
 - Stop the playback of the application on the first device.
 - Shut down the application on the first device.
- Turn up the volume if it is too low.
- Check that the connected device is playing back.
- If you are connecting a computer to the headset, make sure the audio output setting of the computer is set for a Bluetooth device.
- Pair the headset and the Bluetooth device again.
- Restart the smartphone or the computer you use.
- Reset the headset.
- Initialize the headset, and pair the headset and the device again.

Related Topic

- [How to make a wireless connection to Bluetooth devices](#)
- [Listening to music from a device via Bluetooth connection](#)
- [Making a video call on your computer](#)
- [Resetting the headset](#)
- [Initializing the headset to restore factory settings](#)

Low sound level

- Adjust the volume of the headset and the connected device.
- Connect the Bluetooth device to the headset once again.
- If any water droplets are left inside the front and rear sides of the headset housings (the perforated parts for sound output and air vent), the sound level becomes low temporarily, but this is not a malfunction.
- Reset the headset.
- Initialize the headset, and pair the headset and the device again.

Note

- Depending on the connected device, the volume of the device and the headset may or may not be synced. If the volume on a device is not synced to the volume on the headset, it will not be possible to use the device to turn up the volume on the headset once the volume is turned down on the headset.
In that case, turn up the volume of both the headset and the connected device.

Related Topic

- [Resetting the headset](#)
- [Initializing the headset to restore factory settings](#)

Low sound quality, or noise or unusual sound can be heard.

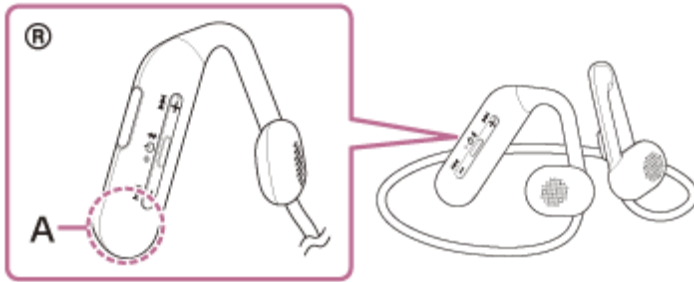
- Turn down the volume of the playback device if it is too loud.
- When playing music, check the connection status of the headset and the transmitting Bluetooth device. When the headset and the transmitting Bluetooth device are connected via an HFP or HSP Bluetooth connection, switch the Bluetooth connection to A2DP with the connected device.
- When using a video calling application on a computer, switch the Bluetooth connection to HFP or HSP by operating the computer.
During a video call, sound quality may become low due to the conditions of the communication line.
- If the headset connects to the previously connected Bluetooth device, the headset may only establish the HFP/HSP Bluetooth connection when it is turned on. Use the connected device to connect via an A2DP Bluetooth connection.
- When listening to music from a computer on the headset, the sound quality may be poor (difficult to hear the singer's voice, etc.) for the first few seconds after a connection is established. This is due to the computer specifications (priority on stable connection at the start of transmission and then switches to priority on sound quality several seconds later) and is not a headset malfunction.
If the sound quality does not improve after a few seconds, use the computer to establish an A2DP connection. As for the operations on your computer, refer to the operating instructions supplied with the computer.

Related Topic

- [Listening to music from a device via Bluetooth connection](#)
- [Making a video call on your computer](#)
- [Supported codecs](#)

Sound skips frequently.

- Remove any obstacles between the antenna of the connecting Bluetooth device and the built-in antenna of the headset. The antenna of the headset is built into the part shown in the dotted line below.




A: Location of the built-in antenna

- Bluetooth communications may be disabled, or noise or audio dropout may occur under the following conditions.
 - When there is a human body between the headset and the Bluetooth device
If this is the case, when you turn the Bluetooth device to face the same direction as the antenna of the headset, the Bluetooth communications may be improved.
 - When there is an obstacle, such as metal or a wall, between the headset and the Bluetooth device
 - In places with wireless LAN, where a microwave oven is used, electromagnetic waves are generated, etc.
 - Where there are other wireless communication audio devices or other people nearby, such as in train station premises or on a crowded train
- If you are enjoying music with your smartphone, the situation may be improved by closing unnecessary apps or restarting your smartphone. If you are enjoying music with your computer, close unnecessary applications or windows and restart the computer.
- Connect the headset and the Bluetooth device once again.
- Reset the headset.
- Initialize the headset, and pair the headset and the device again.

Related Topic

- [Resetting the headset](#)
- [Initializing the headset to restore factory settings](#)

Pairing cannot be done.

- Bring the headset and the Bluetooth device within 1 m (3 feet) from each other.
 - When pairing a device for the first time after purchase or after initializing or repairing the headset, turn on the headset and the headset automatically enters pairing mode. To pair a second or subsequent device, press and hold the  (Bluetooth) button on the headset for about 7 seconds to enter pairing mode.
 - When pairing a device once again after initializing or repairing the headset, you may be unable to pair the device if it retains pairing information for the headset (iPhone or other device). In this case, delete the pairing information for the headset from the device and pair them again.
 - Restart the connected device such as a smartphone or a computer you use, and pair the headset and the device again.
 - Reset the headset.
 - Initialize the headset, and pair the headset and the device again.
-

Related Topic

- [How to make a wireless connection to Bluetooth devices](#)
- [Resetting the headset](#)
- [Initializing the headset to restore factory settings](#)

Unable to make a Bluetooth connection.

- Check that the headset is turned on.
 - Check that the Bluetooth device is turned on and the Bluetooth function is on.
 - If the headset automatically connects to the last connected Bluetooth device, you may fail to connect the headset to other devices via Bluetooth connection. If this is the case, operate the last connected Bluetooth device and disconnect the Bluetooth connection.
 - Check if the Bluetooth device is in sleep mode. If the device is in sleep mode, cancel the sleep mode.
 - Check if the Bluetooth connection has been terminated. If terminated, make the Bluetooth connection again.
 - If the pairing information for the headset has been deleted on the Bluetooth device, pair the headset with the device again.
 - Reset the headset.
 - Initialize the headset, and pair the headset and the device again.
-

Related Topic

- [How to make a wireless connection to Bluetooth devices](#)
- [Resetting the headset](#)
- [Initializing the headset to restore factory settings](#)

Wireless Stereo Headset
WI-OE600


The headset does not operate properly.

- Reset the headset. This operation does not delete pairing information.
 - If the headset does not operate properly even if you reset the headset, initialize the headset.
-

Related Topic

- [Resetting the headset](#)
- [Initializing the headset to restore factory settings](#)

Cannot hear a person during a call/low voice from callers, your voice does not reach the person during a call/your voice is low on the caller's side.

- Check that both the headset and the connected device are turned on.
- Turn up the volume of the connected device and the volume of the headset if they are too low.
- When you use the video calling application, open the settings (*) of the video calling application, and check that the speaker or microphone setting is specified as [Headset (WI-OE600 Hands-Free)](**). When the settings of the video calling application cannot be checked or calling connections [Headset (WI-OE600 Hands-Free)] cannot be selected, select [Headset (WI-OE600 Hands-Free)] on the settings of your computer to make connections.
 - * Depending on the video calling application you are using, this function may not be available.
 - ** Names may vary according to the computer or the video calling application you are using.
- Operate the Bluetooth device to re-establish the connection. Select HFP or HSP for the profile.
- If you are listening to music with the headset, stop playback and press the  (call) button to respond to an incoming call.
- Reset the headset.
- Initialize the headset, and pair the headset and the device again.

Related Topic

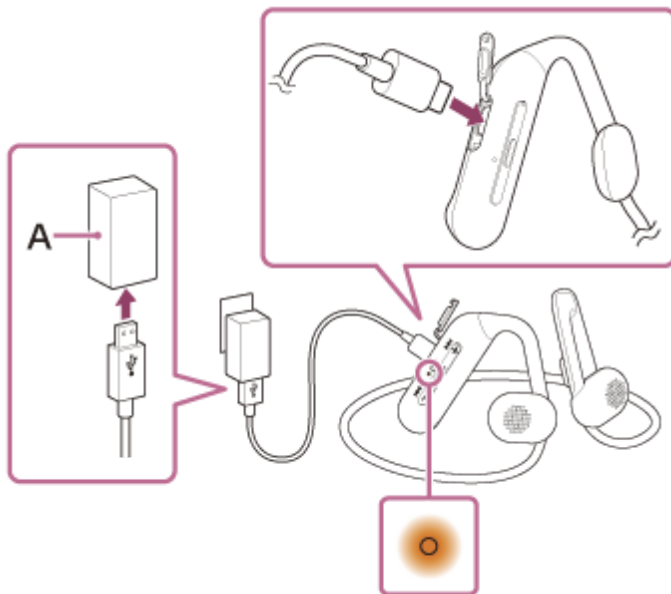
- [How to make a wireless connection to Bluetooth devices](#)
- [Receiving a call](#)
- [Making a call](#)
- [Resetting the headset](#)
- [Initializing the headset to restore factory settings](#)

Resetting the headset

If the headset cannot be turned on or cannot be operated even when it is turned on, reset the headset.

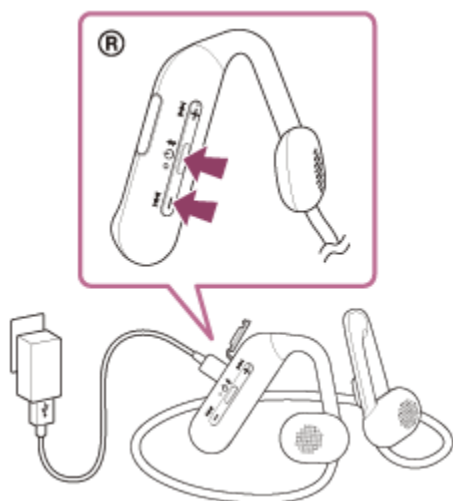
1 Connect the headset to an AC outlet.

Use the supplied USB Type-C cable and a commercially available USB AC adaptor.



A: USB AC adaptor

2 Press the (power) button and the – (volume –) button simultaneously.



The headset will be reset.

The pairing information and other settings are retained.

If the headset does not operate correctly even after resetting, initialize the headset to restore factory settings.

Related Topic

- [Initializing the headset to restore factory settings](#)

5-043-991-11(1) Copyright 2022 Sony Corporation

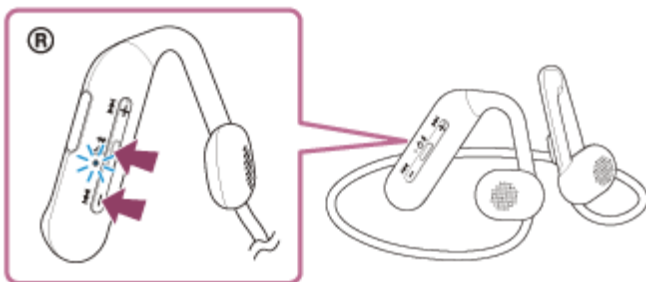
Initializing the headset to restore factory settings

If the headset does not operate correctly even after resetting, initialize the headset.

1 Turn off the headset.

Remove the USB Type-C cable.

2 Press and hold the (power) button and the – (volume –) button for about 7 seconds.



When the initializing is complete, the indicator (blue) flashes 4 times (   ).

This operation resets volume settings, etc. to the factory settings, and deletes all pairing information. In this case, delete the pairing information for the headset from the connected device and then pair them again.

If the headset does not operate correctly even after initializing, consult your nearest Sony dealer.

Related Topic

- [Resetting the headset](#)

Wireless Stereo Headset
WI-OE600

Specifications

Headset

Power source:

DC 3.7 V: Built-in lithium-ion rechargeable battery
DC 5 V: When charged using USB

Operating temperature:

0 °C to 40 °C (32 °F to 104 °F)

Charging time:

Approx. 3 hours

Note

- Charging and usage hours may be different depending on the conditions of use.

Charging temperature:

5 °C to 35 °C (41 °F to 95 °F)

Mass:

Approx. 33 g (1.17 oz)

Communication specification

Communication system:

Bluetooth Specification version 5.0

Output:

Bluetooth Specification Power Class 1

Maximum communication range:

Line of sight approx. 10 m (30 ft)¹⁾

Frequency band:

2.4 GHz band (2.4000 GHz - 2.4835 GHz)

Compatible Bluetooth profiles²⁾:

A2DP
AVRCP
HFP
HSP

Supported Codec³⁾:

SBC

AAC

Transmission range (A2DP):

20 Hz - 20 000 Hz (Sampling frequency 44.1 kHz)

- 1) The actual range will vary depending on factors such as obstacles between devices, magnetic fields around a microwave oven, static electricity, reception sensitivity, antenna's performance, operating system, software application, etc.
- 2) Bluetooth standard profiles indicate the purpose of Bluetooth communications between devices.
- 3) Codec: Audio signal compression and conversion format

Design and specifications are subject to change without notice.

5-043-991-11(1) Copyright 2022 Sony Corporation