

Wireless Noise Canceling Stereo Headset  
1000X THE COLLEXION



Model: YY2998

## Quick Start Guide

### Find your fit

[Wearing the headset](#)

### Download the app, and set up the headset

Many useful features are out there in your device. Download the “Sound Connect” app and get the most out of what you have.

For the main features available with the “Sound Connect” app, see [“Using the “Sound Connect” app”](#).



Sound Connect

### Let's start to use

1

#### Turning on the headset



Press and hold the power button for about 2 seconds or more until the indicator flashes in blue. The headset enters pairing mode automatically when you turn on the headset for the first time after purchase.



## 2 Establishing a BLUETOOTH® connection

Follow the downloaded “Sound Connect” app instructions.



## 3 Operating the headset

You can use the touch sensor control panel to perform the following actions.

Tap twice quickly: Play/Pause

Swipe forward and release: Skip to the beginning of the next track

Swipe backward and release: Skip to the beginning of the previous track (or the current track during playback)

Swipe up and release: Increase the volume

Swipe down and release: Lower the volume

For more details on the operating procedure, refer to “Controlling the audio device (Bluetooth connection)”.

### To prevent burning or malfunction due to getting wet

The headset is not waterproof.

If the headset is charged while it is wet with rain or sweat, this can result in burnout or malfunction.

### Note

- If you put on the headset without adjusting the slider, the headset may not be positioned properly on your head, resulting in discomfort or a weak noise canceling effect.  
The wearing detection function of the headset may also not work properly. Music playback may stop automatically, or the automatic power off function (the battery saving function) may activate and the headset may automatically turn off.

## Related information

[Wearing the headset](#)

[Establishing a Bluetooth connection manually](#)

[Charging the headset](#)

WH-1000XX

What you can do with the headset

[Using the headset](#)

[Using the “Sound Connect” app](#)

Getting started

[About the voice guidance](#)

Supplied accessories

- [Included items](#)

---

- [Setting the headset in the carrying case](#)

---

## Parts and controls

- [Location and function of parts](#)

---

- [About the indicator](#)

---

## Wearing the headset

- [Wearing the headset](#)

---

## Operating the headset

- [About the touch sensor control panel](#)

---

## Power/Charging

- [Charging](#)

---

- [Available operating time](#)

---

- [Checking the remaining battery charge](#)

---

- [Turning on the headset](#)

---

- [Turning off the headset](#)

---

## Making connections

- [How to make a wireless connection to Bluetooth devices](#)

---

### Easy setup with app

- [Connecting with the "Sound Connect" app](#)

---

### Android smartphone

- [Pairing and connecting with an Android smartphone](#)

---

- [Connecting to a paired Android smartphone](#)

---

- [Switching between Classic Audio and LE Audio connections with an Android smartphone](#)

---

### iPhone (iOS devices)

- [Pairing and connecting with an iPhone](#)

---

- [Connecting to a paired iPhone](#)

---

### Computers

- [Pairing and connecting with a computer \(Windows® 11\)](#)

---

- [Pairing and connecting with a computer \(Mac\)](#)

---

- [Connecting to a paired computer \(Windows 11\)](#)

---

- [Connecting to a paired computer \(Mac\)](#)

---

## Other Bluetooth devices

- [Pairing and connecting with a Bluetooth device](#)

---

- [Connecting to a paired Bluetooth device](#)

---

## Multipoint connection

- [Connecting the headset to 2 devices simultaneously \(multipoint connection\)](#)

---

[Switching audio between multiple devices with “audio switch”](#)

---

[Sharing music with “Auracast™ broadcast audio”](#)

---

[Disconnecting Bluetooth connection \(after use\)](#)

---

[Using the supplied headphone cable](#)

---

## Listening to music

### Listening to music via a Bluetooth connection

- [Listening to music from a device via a Bluetooth connection](#)

---

- [Controlling the audio device \(Bluetooth connection\)](#)

---

- [Switching sound settings according to the content or usage scenario \(listening mode\)](#)

---

- [About 360 Reality Audio](#)

---

- [Enjoying seamless playback with speakers \(Auto Switch\)](#)

---

### Noise canceling function

- [What is noise canceling?](#)

---

- [Using the noise canceling function](#)

---

- [Always automatically optimizing the noise canceling performance to suit the wearer and usage environment](#)

---

### Listening to ambient sound

- [Listening to ambient sound during music playback \(Ambient Sound Mode\)](#)

---

- [Listening to ambient sound quickly \(Quick Attention Mode\)](#)

---

- [Speaking with someone while wearing the headset \(Speak-to-Chat\)](#)

---

## Making phone calls

[Receiving a call](#)

---

[Making a call](#)

---

[Functions for a phone call](#)

---

[Making a video call on your computer](#)

---

Using the voice assist function

[Using Google™ Gemini](#)

---

[Using Tencent Xiaowei](#)

---

[Using the voice assist function \(Google app\)](#)

---

[Using the voice assist function \(Siri\)](#)

---

Important information

[Precautions](#)

---

[Supported codecs](#)

---

[How to keep the software up-to-date \(for comfortable use of the headset\)](#)

---

[To prevent burning or malfunction due to getting wet](#)

---

[Licenses](#)

---

[Trademarks](#)

---

Troubleshooting

[Troubleshooting](#)

---

[Resetting the headset](#)

---

[Initializing the headset to restore factory settings](#)

---

Specifications

[Specifications](#)

---

Wireless Noise Canceling Stereo Headset  
1000X THE COLLEXION

## Using the headset

---

The following functions can be operated using the touch sensor control panel on the headset.

For functions with detailed operating procedures described in the Help Guide, refer to the Related Topic at the bottom of the page.

### Bluetooth connection

You can connect to devices such as a smartphone or computer via Bluetooth.

### Playing music from a device via a Bluetooth connection

You can enjoy music wirelessly from Bluetooth-connected devices such as a smartphone or computer.



### Making calls via a Bluetooth-connected device

You can make wireless calls using Bluetooth-connected devices such as a smartphone or computer.



---

### Related Topic

- [How to make a wireless connection to Bluetooth devices](#)
- [Connecting the headset to 2 devices simultaneously \(multipoint connection\)](#)
- [Using the supplied headphone cable](#)
- [Listening to music from a device via a Bluetooth connection](#)
- [Controlling the audio device \(Bluetooth connection\)](#)

TP1002271843

Wireless Noise Canceling Stereo Headset  
1000X THE COLLEXION

## Using the “Sound Connect” app

Install the “Sound Connect” app on your smartphone from the Google Play store or App Store.



### Service information linked with the features of the “Sound Connect” app

<https://www.sony.net/supported-servicelink>  
[sony.net/servicelink](https://www.sony.net/servicelink)

- The services that can be linked differ depending on the countries and regions.
- The specifications of the services that can be linked are subject to change, suspension or termination without notice.

The following functions can be operated and set using the “Sound Connect” app.

For functions with detailed operating procedures described in the Help Guide, refer to the Related Topic at the bottom of the page.

The following can be accessed from the [My Device] tab.

#### Headset controls and status display

- Displaying the remaining battery charge (headset)

#### Adaptive Sound Control

The headset adjusts the noise canceling function automatically based on detected actions.

#### Ambient Sound Control

The modes of the noise canceling function and ambient sound function can be adjusted.

#### Speak-to-Chat

Automatic audio detection for Speak-to-Chat can be enabled or disabled, and its settings can be configured.

#### Listening mode

Sound settings can be switched based on the content or usage scenario. The unique 360 Reality Audio Upmix technology of Sony converts stereo audio into spatial audio. It lets you enjoy immersive sound.

#### Equalizer

Set sound quality from presets. You can also set sound quality customized to your preferences.

#### DSEE Ultimate

Using AI (Artificial Intelligence) technology, the headset improves high-range sound reproduction and the reproduction of subtle sounds. It upscales CD and compressed audio files to high-resolution quality, reproducing a dynamic and clear sound.

## 360 Reality Audio

Set up the 360 Reality Audio.

## Spatial Sound and Head Tracking

The app optimizes the spatial sound by measuring the angle at which your headset is worn. When using Android Head Tracking and spatial sound compatible services, you can enjoy an accurate audio experience.

## Bluetooth Connection Quality

You can set whether to prioritize sound quality or connection stability when using Classic Audio via Bluetooth.

- [Prioritize Sound Quality]: Prioritizes the sound quality.
- [Prioritize Stable Connection]: Select this option when the connection is unstable, such as when frequent sound interruptions occur.

When using Bluetooth connection with LE Audio, select [Low latency]. If [Low latency] is not displayed, set [LE Audio connection setting for headphones].

### Note

- The playback time may shorten depending on the sound quality and the conditions under which you are using the headset.
- Depending on the ambient conditions in the area where you are using the headset, intermittent sound may still occur even if [Prioritize Stable Connection] is selected.

## LE Audio connection setting for headphones

Set this option when using Bluetooth connection with LE Audio. If [LE Audio connection setting for headphones] is not displayed, set [Bluetooth Connection Quality].

## Auto Switch

You can enjoy wireless playback while having the audio output source automatically switched between the headset and the speaker.

## Voice Control/Voice Assistant

You can set voice control, allowing you to operate the headset with voice commands after saying the wake word. You can also check the available languages and voice commands in the app.

## Touch sensor control panel

Enables or disables operation on the touch sensor control panel.

## Operation setting of the [NC/AMB] button

Set the switching pattern for the noise canceling and Ambient Sound Mode on the headset.

## Change Quick Access services (\*)

Set the service to be assigned to Quick Access.

## Head Gesture

Enable or disable headset controls using nodding and shaking gestures.

## Operation setting of [Listening mode]

Set the switching pattern for the listening mode on the headset.

## **Pause when headphones are removed**

Set the function to automatically pause and resume music playback based on wearing-detection.

## **Battery Care**

When enabled, it helps extend the battery lifespan to improve durability.

## **Automatic Power Off**

Set the function to automatically power off based on wearing-detection. When enabled, power consumption increases.

## **Capture Voice During a Phone Call**

The microphone activates to capture external sound, allowing you to hear your own voice more clearly during calls (Sidetone function).

## **Notification & Voice Guide**

Switch the notification sounds and voice guidance on or off. Set the language and volume for the voice guidance as well.

## **Update Software**

Set how to update the headset software.

## **Software version**

Display the headset software version.

The following can be accessed from the [Scene] tab.

## **Scene-based Listening (\*)**

It detects transitions in actions, such as when making calls or walking, and automatically plays music from a linked music service.

The following can be accessed from the [Discover] tab.

## **Listening History**

It records and displays usage history, such as headset activity and the songs you have listened to, allowing you to review your listening experience.

The following can be accessed from the [Menu] tab.

## **Help**

Display support information for the headset.

(\*) Cannot be used during LE Audio connection.

### **Note**

- The operating instructions and screen displays of the “Sound Connect” app are subject to change without prior notice due to future updates.

TP1002271844

5-070-672-11(1) Copyright 2026 Sony Corporation

Wireless Noise Canceling Stereo Headset  
1000X THE COLLEXION

## About the voice guidance

---

You will hear the following voice guidances depending on the operating procedure performed and the headset status. In the factory settings, when you put the headset on your ears, you will hear the voice guidance in English, Chinese, or Japanese.

You can use the “Sound Connect” app to change the following voice guidance settings.

- Language setting
- Volume setting

### “Pairing”

- When you put the headset on your ears and the headset enters pairing mode automatically:  
The headset enters pairing mode automatically in the following cases.
  - When you pair the headset with a device for the first time after purchasing the headset
  - When there is no pairing information, such as after initialization, and you put the headset on your ears
- When you manually set the headset to pairing mode and put the headset on your ears

### “Low battery”

- When the remaining battery charge of the headset is low

### “Battery is empty”

- When automatically turning off due to low battery of the headset

### “Battery about XX %” / “Battery fully charged”

- When informing the remaining battery charge:  
The “XX” value indicates the approximate remaining charge. This is a rough estimate.

### “Voice guidance test”

- When setting the voice guidance volume

### “The Digital assistant is not connected” (\*)

- When Digital assistant is not available on the smartphone connected to the headset even if you operate the headset

### “The Xiaowei is not connected” (\*)

- When Tencent Xiaowei is not available on the smartphone connected to the headset even if you operate the headset

### “The Voice Assistant is not available. Please open the Sound Connect and check the Voice Assistant settings.”

- When operating Voice Assistant while connected in LE Audio

### “Launch the Sound Connect to activate the Service Link.”

- When Service Link is inactive and you try to use Quick Access

**“App assigned to the Quick Access is not launched on the mobile device”**

- When the corresponding app does not start even if the noise canceling/Ambient Sound Mode button is pressed when Quick Access is set to the noise canceling/Ambient Sound Mode button

**“The Quick Access is not available. Please open the Sound Connect and check the Quick Access settings.”**

- When operating Quick Access while connected in LE Audio

**“The Quick Access is not available. Please open the Sound Connect and check the Service settings.”**

- When the usage conditions are not met during Quick Access use

**“The [Safe volume control] limits the volume.”**

- When Safe Volume Control starts

**“Apologies, the command could not be recognized”**

- When Voice Control does not recognize the command after recognizing the wake word

**“The voice assistant on your mobile device is not responding. Please check your settings.”**

- When Voice Control recognizes "Assistant" but the voice assist function does not activate

**“Mic Off”**

- When the headset was operated to turn off the microphone during a call

**“Mic On”**

- When the headset was operated to turn on the microphone during a call

**Liquid detected in the USB port. Do not charge the headset.**

- When using the headset while the USB Type-C port is flooded/When the USB Type-C port is flooded while using the headset

**Liquid detected in the USB port. Battery level is low, but do not charge the headset.**

- When the remaining battery charge of the headset is low while the USB Type-C port is flooded

**Liquid no longer detected in the USB port. You can start charging the headset.**

- When the USB Type-C port is flooded and the remaining battery charge is below 10%, and the flooded state is no longer detected while using the headset

**“Charging stopped. To resume charging, disconnect the USB cable and wait before trying again.”**

- When abnormal charging or abnormal charging temperature occurs while using the headset during charging

**“Standard” (\*\*)**

- When Standard is selected in the listening mode settings

**“Background Music” (\*\*)**

- When Background Music is selected in the listening mode settings

### “Cinema Upmix” (\*\*)

- When Cinema is selected in the listening mode settings

### “Game Upmix” (\*\*)

- When Game is selected in the listening mode settings

### “Music Upmix” (\*\*)

- When Music is selected in the listening mode settings

(\*) May not be supported in some countries and regions.

(\*\*) If you change the setting in the “Sound Connect” app, the voice guidance will not be heard.

#### Note

- Changing the language of the voice guidance takes up to 10 minutes.
- When you initialize the headset to restore to the factory settings after you change the language of the voice guidance, the language will also return to the factory settings.
- If the voice guidance is not heard, turn off the headset. Then, turn it back on again.

TP1002271845

Wireless Noise Canceling Stereo Headset  
1000X THE COLLEXION

## Included items

---

After opening the package, check that all of the items in the list are included. If any items are missing, consult the Sony support contact or your nearest Sony dealer.

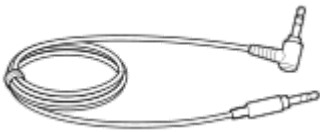
Numbers in parentheses indicate the number of items.

### Wireless Noise Canceling Stereo Headset (1)

### USB Type-C® cable (USB-A to USB-C®) (1) (Models for Chinese mainland only)



### Headphone cable (1)



### Carrying case (1)



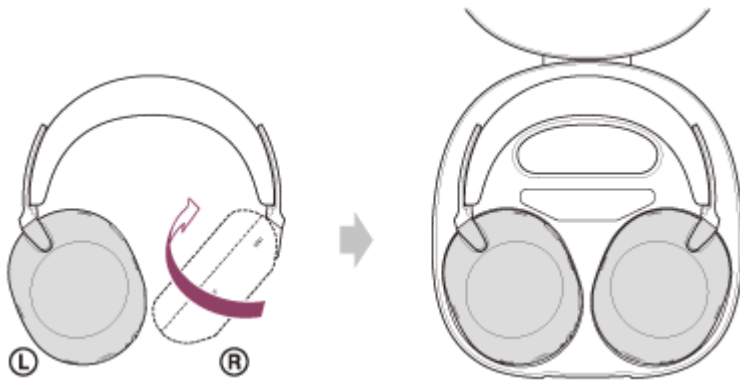
### Documents (1 set)

TP1002085406

Wireless Noise Canceling Stereo Headset  
1000X THE COLLEXION

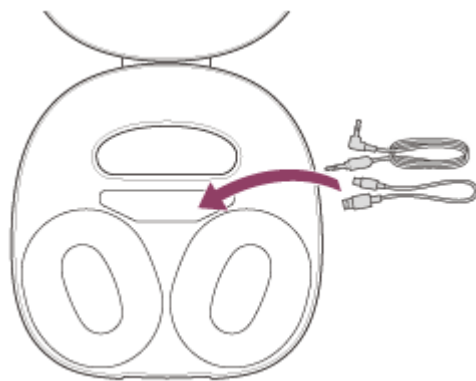
## Setting the headset in the carrying case

When you have finished using the headset, rotate the left and right units to flatten the headset, and put it in the supplied carrying case.



### To store the cables

Put the cables in the holder separated by the divider in the carrying case.



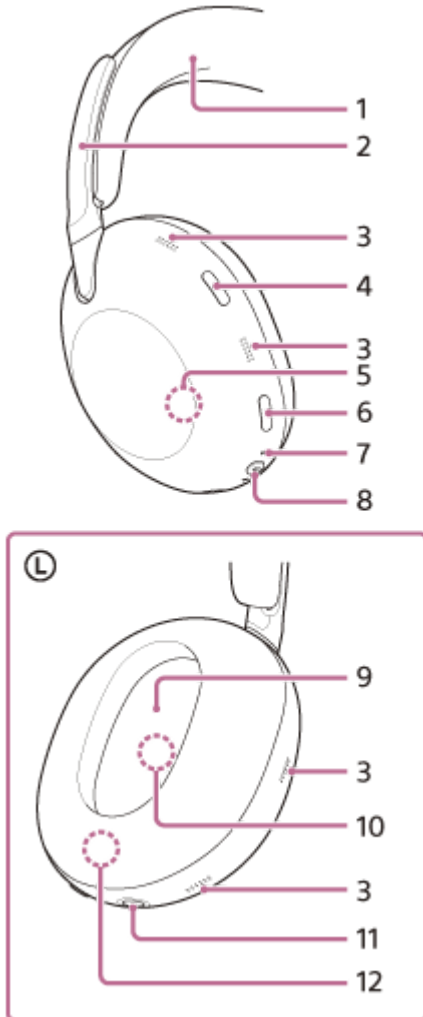
### Note

- External force beyond the range of normal use, such as turning the unit's rotary axis or other moving parts to the opposite side of the normal direction or dropping the headset, may cause damage. The warranty does not cover malfunctions caused by damage due to improper handling.

TP1002085469

## Location and function of parts

### Left unit



1. Headband
2. Headband sliders  
Slide to adjust the length of the headband.
3. Noise canceling function microphones (external) and voice pickup microphones  
Pick up the sound of noise when the noise canceling function is in use and the wearer's voice during a phone call or when the Speak-to-Chat mode is in use.
4. Listening mode button
5. Built-in antenna  
A Bluetooth antenna is built into the headset.
6. Noise canceling/Ambient Sound Mode button
7. Indicator (orange/blue)  
Lights up in orange or blue to indicate the battery or communications status of the headset.

8. Power button/Bluetooth button

⏻ : Power mark

📶 : Bluetooth mark

9. Ⓛ (left) mark

10. Noise canceling function microphones (internal)

Picks up the sound of the noise when the noise canceling function is in use.

11. Headphone cable input jack

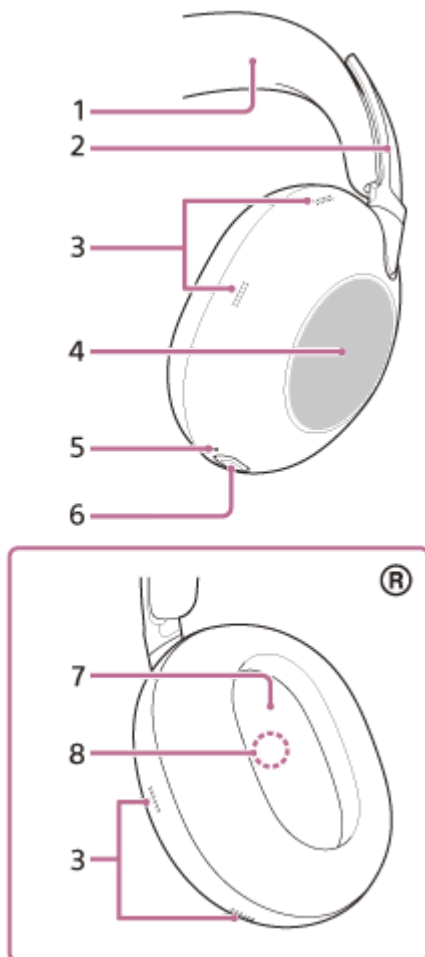
Connect a music player or other device with the supplied headphone cable. Make sure that you insert the cable until it clicks. If the plug is not connected correctly, you may not hear the sound properly.

12. Serial number

Located inside the unit.

See "To check the serial number" below.

**Right unit**



1. Headband

2. Headband sliders

Slide to adjust the length of the headband.

3. Noise canceling function microphones (external) and voice pickup microphones

Pick up the sound of noise when the noise canceling function is in use and the wearer's voice during a phone call or when the Speak-to-Chat mode is in use.

4. Touch sensor control panel

Use the touch sensor control panel to remotely control music playback on a connected Bluetooth device and perform other actions.

5. Charging indicator (orange)

Lights up in orange while charging.

6. USB Type-C port

Connect the headset to an AC outlet with a USB AC adaptor or to a computer with a USB Type-C cable to charge the headset.

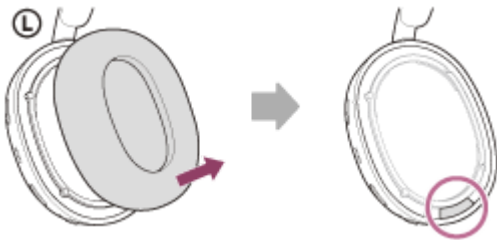
7. ® (right) mark

8. Noise canceling function microphones (internal)

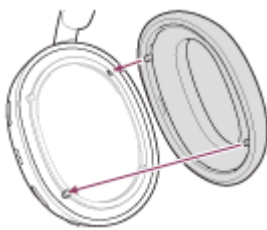
Picks up the sound of the noise when the noise canceling function is in use.

### To check the serial number

- Make sure the headset is turned off and the USB Type-C cable is not connected.
- Remove the earpad from the left unit by pulling it straight off the housing. Avoid pulling it off at an angle. The serial number is located on the lower center of the left unit.



- Attach the removed earpad to the left unit. Make sure that the direction of the two protrusions on the unit and the holes in the earpad are aligned, and firmly insert the six tabs into the unit until you hear a click.



#### Note

- Do not remove the earpad unless necessary.
- Before removing the earpad, make sure the headset is turned off and the USB Type-C cable is not connected.
- Do not remove earpad in the presence of iron sand or other metal objects. Iron sand or other metal objects may adhere to the magnet inside the headset, causing the headset to malfunction.
- Be sure to attach the earpad in the correct direction. If the earpad is not attached in the correct direction, you may not get the desired acoustic performance.
- Any defects caused by failure to follow the above precautions are not covered by the product warranty.

### Related Topic

- [About the indicator](#)
- [Checking the remaining battery charge](#)
- [About the touch sensor control panel](#)



Wireless Noise Canceling Stereo Headset  
1000X THE COLLEXION

## About the indicator

You can check various statuses of the headset by the indicator.

- : Turns on in blue
- : Turns on in orange
- : Turns off

### Power button indicator (blue/orange)

#### Power status

The indicator flashes 2 times in blue.



- When the headset is turned on

The indicator lights up in blue for about 2 seconds.



- When turning off the headset

#### Indication of the remaining battery charge

The indicator flashes 2 times in blue.



- When the remaining battery charge is displayed and the remaining charge is 10% or more

The indicator repeatedly flashes slowly in orange for about 15 seconds.



- When the remaining battery charge is displayed and the remaining charge is less than 10%
- When the remaining battery charge becomes low

#### Bluetooth connection status

The indicator repeatedly flashes twice in blue.



- When in pairing mode

The indicator repeatedly flashes in blue with an interval of about 1 seconds.



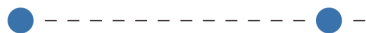
- When the connection is not established

The indicator repeatedly flashes quickly in blue for about 5 seconds.



- When the connection process is completed

**The indicator repeatedly flashes in blue with an interval of about 5 seconds.**



- When the connection is established

**The indicator repeatedly flashes quickly in blue.**

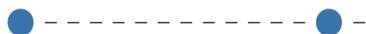


- When a call is incoming

The unconnected and connected status indications automatically turn off after a period of time has passed. They start flashing again for a period of time when an action is performed. When the remaining battery charge becomes low, the indicator starts flashing in orange.

## Other

**The indicator repeatedly flashes in blue with an interval of about 5 seconds.**



- When the headset is turned on while the headphone cable is connected:  
The indicator turns off automatically after a period of time has passed. When the remaining battery charge becomes low, the indicator starts flashing in orange.

**The indicator repeatedly flashes in orange and blue at an interval of about 0.6 seconds.**



- Updating software

**The indicator flashes 4 times in blue.**



- When the initialization process is completed

## USB Type-C port charging indicator (orange)

### Charging status

**The indicator lights up in orange for about 1 minute, and then turns off.**



- When the battery is fully charged when charging starts on the headset
- When battery care is enabled and the remaining battery charge of the headset units is above 80% at the start of charging

**The indicator lights up in orange.**



- When the headset is charging

**The indicator turns off.**



- When the battery becomes fully charged and charging is complete
- When battery care is enabled, and the remaining battery charge of the headset reaches 80% or more

**The indicator repeatedly flashes twice in orange.**



- When the battery temperature of the headset is abnormal

**The indicator repeatedly flashes slowly in orange.**



- When an error occurs while the headset is charging and the headset is not charged

---

---

#### **Related Topic**

- [Checking the remaining battery charge](#)
- [Initializing the headset to restore factory settings](#)

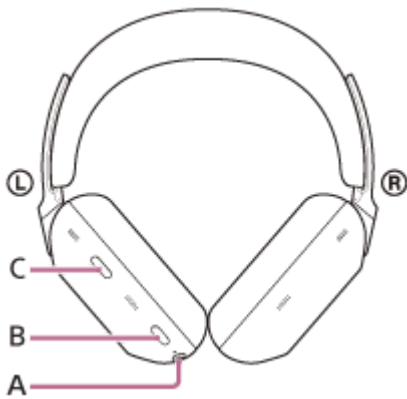
TP1002085449

## Wearing the headset

### 1 Check the left and right units of the headset.

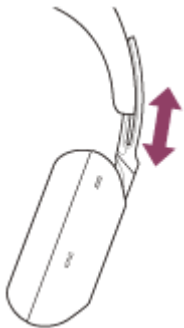
On the left unit, there is the power button (A), the noise canceling/Ambient Sound Mode button (B), and the listening mode button (C).

There are no buttons on the right unit.



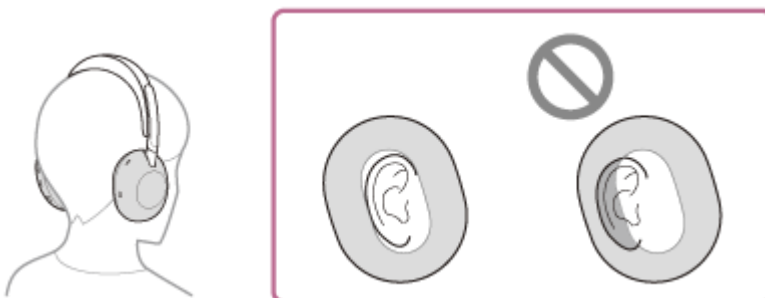
### 2 Extend the slider.

Extend the slider to its full length before putting on the headset.



### 3 Put on the headset.

Put on the headset with the earpads fitting snugly over your ears.



### 4 Adjust the length of the slider.

Adjust the slider to a length where the headband touches the top of your head.



## 5 Adjust the orientation of the units.

Adjust the orientation of the left and right units so that the earpads fit snugly all around your ears.



If you put on the headset without adjusting the slider, the headset may not be positioned properly on your head, resulting in discomfort or a weak noise canceling effect.

The wearing detection function of the headset may also not work properly. Music playback may stop automatically, or the automatic power off function (the battery saving function) may activate and the headset may automatically turn off.

If you feel that the headband does not fit and easily displaces after adjusting the slider, adjust the slider to a shorter length. This may improve the situation.

## When attaching and removing the headset

In the factory settings, the built-in proximity sensor in the left unit detects when the headset is worn on or removed from your ears. When it is detected, the headset automatically controls the touch sensor control panel's action, powering off the headset, pausing music playback, and other functions.

### When the headset is worn

- You can use the touch sensor control panel of the headset to play music, make and receive calls, and other actions.

### When the headset is removed

- When you listen to music while wearing the headset on your ears, the headset will pause music playback automatically if the headset is removed. When the headset is worn again, the headset resumes music playback.
- In order to save the battery, the headset will automatically turn off after 15 minutes of not being worn.
- When the headset is removed, music playback, making and receiving calls, and other actions cannot be performed even if you tap the touch sensor control panel. This is to prevent the headset from reacting incorrectly. The noise canceling function cannot be used even if you press the noise canceling/Ambient Sound Mode button. The listening mode button is also disabled.

### About the instruction manual video

Watch the video to find out how to put the headset on your ears. No audio explanation is available.

Models for countries and regions excluding Chinese mainland and Japan:

[https://rd1.sony.net/help/mdr/mov0109/h\\_zz/](https://rd1.sony.net/help/mdr/mov0109/h_zz/)

Models for Chinese mainland:

<https://rd1.sony.net/help/mdr/mov0109/zh-cn/>

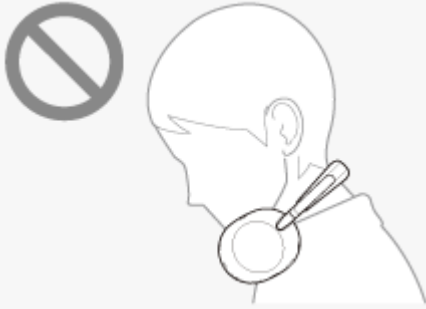
Models for Japan:

## Hint

- You can use the “Sound Connect” app to change the following settings.
  - Wearing detection automatic music playback pause and resume function
  - Wearing detection automatic power off function (the battery saving function)

## Note

- In the following cases, wearing detection may react incorrectly. When you are not using the headset, turn off the headset.
  - With the headset around your neck, your chin goes into the housing



- Your hand is placed inside the earpad of the left unit.



- The headset is inside a container such as a bag.



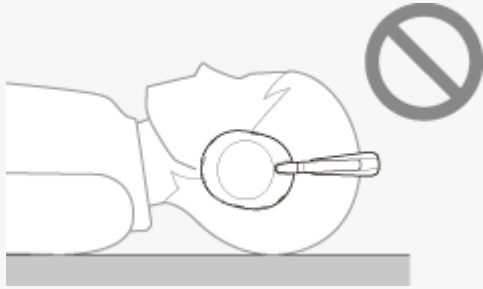
- The headset is hanging on the edge of something such as a bag.



- The headset is on a surface such as a desk.



- When you wear the headset as shown below, you may not be able to operate the touch sensor control panel or the noise canceling/Ambient Sound Mode button. This is because wearing detection does not work properly. Wear the headset correctly while facing forward, or press the power button briefly.
  - Wearing the headset while lying down or with your face up



- Wearing the headset with your face down



- When you wear the headset over a cap, cloth, a scarf, or hair, wearing detection may not work properly, and you may not be able to operate the touch sensor control panel. Wear the headset so that your ears are inside the earpads.
- When the supplied headphone cable is connected to the headset, wearing detection does not work.
- The wearing detection automatic music playback pause and resume function is only available when connected via Bluetooth connection.
- The connected device or playback application you are using may not support the wearing detection automatic music playback pause and resume function.
- External force beyond the range of normal use, such as turning the unit's rotary axis or other moving parts to the opposite side of the normal direction or dropping the headset, may cause damage. The warranty does not cover malfunctions caused by damage due to improper handling.

---

## Related Topic

- [Using the “Sound Connect” app](#)

TP1002089850

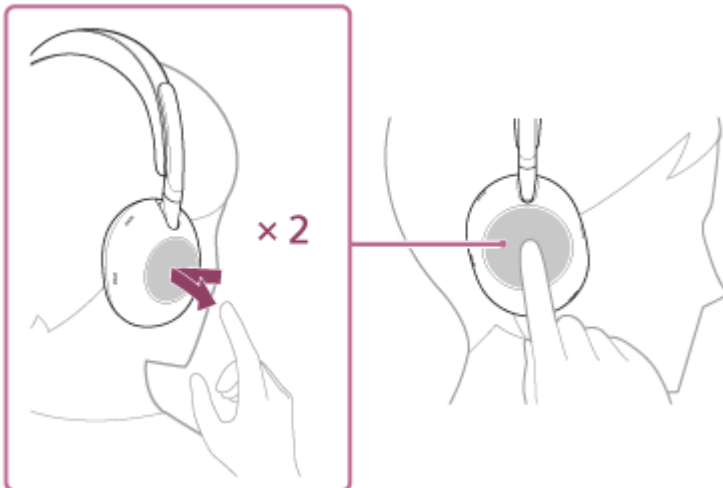
## About the touch sensor control panel

Use the touch sensor control panel (A) on the headset for various actions, such as music playback, phone calls, or switching to the Quick Attention Mode.



### Main actions

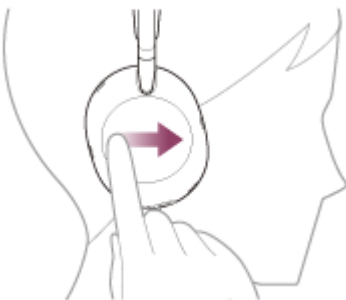
- Tap twice quickly with an interval of about 0.4 seconds between taps.



During music playback: Plays or pauses music.

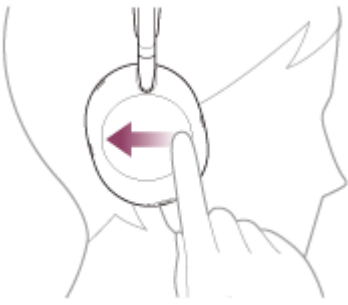
For a phone call: Receives a call when there is an incoming call. Finishes the call during a call.

- Swipe forward and release.



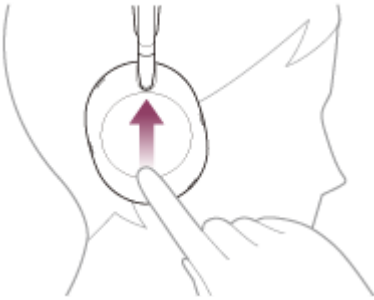
During music playback: Skips to the beginning of the next track. To fast-forward, swipe forward and hold. Release at the desired playback point.

- Swipe backward and release.



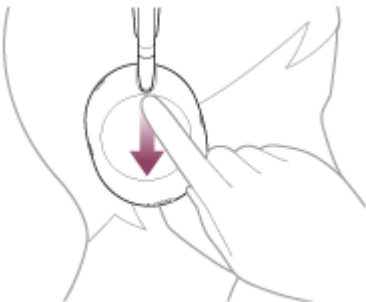
During music playback: Skips to the beginning of the previous track or the current track during playback. To fast-reverse, swipe backward and hold. Release at the desired playback point.

- Swipe up and release.



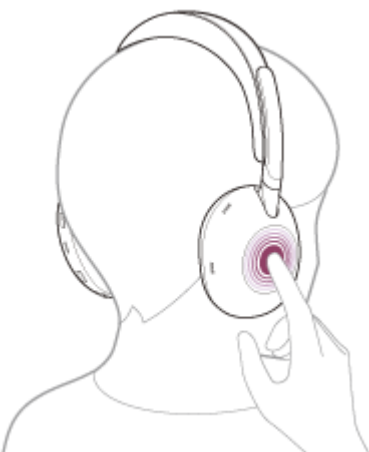
During music playback/a phone call: Increases the volume. Repeat until the volume reaches the desired level. To continue changing the volume, swipe up and hold. Release at the desired level.

- Swipe down and release.



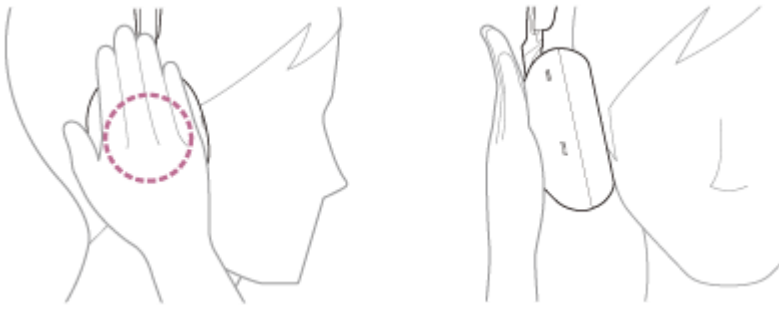
During music playback/a phone call: Lowers the volume. Repeat until the volume reaches the desired level. To continue changing the volume, swipe down and hold. Release at the desired level.

- Hold your finger to the touch sensor



When using the voice assist function: Starts voice input. To finish voice input, release your finger.

- Touch the entire touch sensor control panel with your hand.



Activates the Quick Attention Mode. To deactivate the Quick Attention Mode, release your hand.

#### Hint

- You can switch the touch sensor control panel on/off, using the “Sound Connect” app.

#### Note

- If the communication condition is poor, the Bluetooth device may malfunction in response to the operating procedure on the headset.
- The available functions may vary depending on the connected device, the music software, or app used. In some cases, it may operate differently or may not work even when the operating procedures described above are performed.
- In order to prevent the headset from reacting incorrectly, music playback, making and receiving calls, and other actions cannot be performed when not wearing the headset on your ears, even if you tap the touch sensor control panel.

---

#### Related Topic

- [Using the “Sound Connect” app](#)
- [Controlling the audio device \(Bluetooth connection\)](#)
- [Functions for a phone call](#)
- [Wearing the headset](#)
- [Using Google™ Gemini](#)
- [Using the voice assist function \(Siri\)](#)
- [Listening to ambient sound quickly \(Quick Attention Mode\)](#)
- [Receiving a call](#)
- [Making a call](#)

TP1002096193

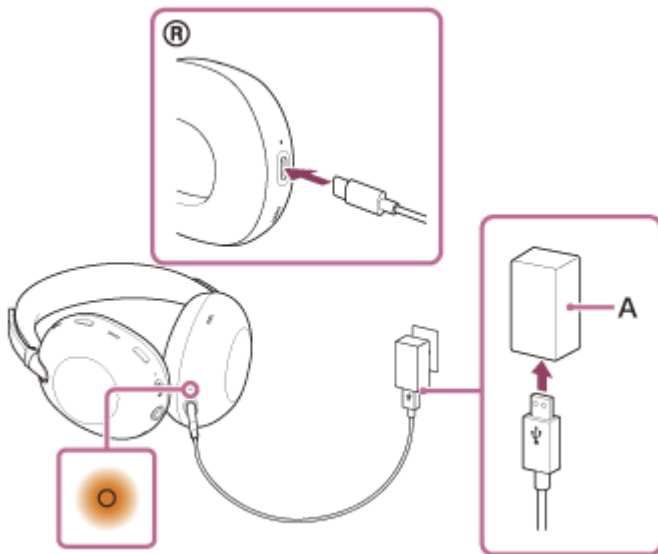
Wireless Noise Canceling Stereo Headset  
1000X THE COLLEXION

## Charging

The headset contains a built-in lithium-ion rechargeable battery. Use the USB Type-C cable to charge the headset before use.

### 1 Connect the headset to an AC outlet.

Use a USB Type-C cable and USB AC adaptor (A).



The charging indicator on the headset lights up in orange.  
When charging is complete, the charging indicator turns off automatically.

After charging is complete, disconnect the USB Type-C cable.

## About the charging time

The required time for fully charging the headset is about 3.5 hours (\*).

(\* ) Time required for charging an empty battery to its full capacity. The charging time may differ depending on the conditions of use.

## About charging while using the headset

You can use the headset while charging.

When using the headset while it is charging, charging will stop at approximately 80% (if the battery level is more than 80%, charging will not start). The value is a rough estimate. The value may vary depending on the ambient environment. Depending on the charging environment (such as the power source or type of USB AC adaptor used), you may hear electrical noise from the headset when it is charging.

Headset functions and operating procedures may not work correctly.

Do not charge the headset when there is liquid such as water or sweat, or dust and other foreign matter on the USB Type-C cable or USB Type-C port. Doing so can cause burns or serious injuries due to fire, electric shock, overheating, or ignition, or can cause a malfunction. Take note of the following when using the headset while charging.

- If you feel any abnormalities, stop using the headset immediately.
- Check that there is no dust or foreign objects in the port.
- If the USB Type-C cable or USB Type-C port gets wet with liquid such as drinking water or sweat while charging, immediately disconnect the USB Type-C cable from the connected device and stop charging.



While connecting the USB cable, do not apply excessive force to the connection part.

When plugging or unplugging the cable, hold the plug and plug it straight into the headphone cable input jack. Pulling on the cable or applying excessive force may cause it to break.

If the USB cable connector is deformed, such as by it being bent, stop use immediately.

### **Water detection in the charging port**

When the headset detects an abnormality, such as water droplets or foreign objects in the USB Type-C port, it will notify you via voice guidance and a notification on the “Sound Connect” app.

While an abnormality is detected, charging is not available. Do not charge the headset.

Note the following.

- Make sure the USB Type-C port is clear of any foreign objects.
- If water droplets are present on the charging port, allow it to dry completely before charging.
- If foreign objects are found in the charging port, carefully remove them with a tool such as an air duster, being careful not to damage the port, and then try charging.

### **System requirements for battery charge using USB**

#### **USB AC adaptor**

A commercially available USB AC adaptor with a Type-C connector capable of supplying an output current of 1.5 A (1 500 mA) or more (Models for countries and regions excluding Chinese mainland)

A commercially available USB AC adaptor capable of supplying an output current of 1.5 A (1 500 mA) or more (Models for Chinese mainland)

#### **USB cable (Models for countries and regions excluding Chinese mainland)**

A commercially available USB Type-C cable (compliant with USB standards)

#### **Computer**

The computer should be equipped with a USB port as standard.

- We do not guarantee that the operating procedures will work on all computers.
- The operating procedures on a self-made computer are not guaranteed.

#### **Hint**

- The headset can be also charged by connecting the headset to a running computer using a commercially available USB Type-C cable.

#### **Note**

- The battery does not fully charge when the headset is on.
- If a USB Type-C cable is supplied, be sure to use it.
- When charging is complete, remove the USB Type-C cable.
- Charging may not be successful depending on the type of USB Type-C cable.

- The water detection function may malfunction depending on the type of USB Type-C cable.
- Charging may not be successful depending on the type of USB AC adaptor.
- The headset cannot be charged when the computer goes into standby (sleep) or hibernation mode. In this case, change the computer settings, and start charging once again.
- If the headset is not used for a long time, the rechargeable battery usage hours may be reduced. However, the battery hours will improve after several charge and discharge cycles. If you store the headset for a long time, charge the battery once every 6 months to avoid over-discharge.
- If the headset is not used for a long time, it may take longer to charge the battery.
- If the headset detects a problem while charging due to the following causes, the charging indicator flashes in orange. In this case, charge once again within the charging temperature range. If the problem persists, consult the Sony support contact or your nearest Sony dealer.
  - Ambient temperature exceeds the charging temperature range of 5 °C to 35 °C (41 °F to 95 °F).
  - There is a problem with the rechargeable battery.
- If the headset is not used for a long time, the charging indicator may not immediately light up in orange when charging. Please wait a moment until the indicator lights up.
- If the usage hours of the built-in rechargeable battery decrease significantly, the battery should be replaced. Consult your nearest Sony dealer.
- Avoid exposure to extreme temperature changes, direct sunlight, moisture, sand, dust, and electrical shock. Never leave the headset in a parked vehicle.
- When connecting the headset to a computer, make sure to connect it directly to the computer with a USB Type-C cable. Charging will not be properly completed when the headset is connected through a USB hub.

---

## Related Topic

- [About the indicator](#)

TP1002085419

## Available operating time

The available operating times of the headset with the battery fully charged are as follows:

### Bluetooth connection

#### Music playback time

Codec	Noise canceling function/Ambient Sound Mode	Available operating time
LDAC™	Noise canceling function: Active	Maximum 20 hours
LDAC	Ambient Sound Mode: Active	Maximum 20 hours
LDAC	Inactive	Maximum 28 hours
AAC	Noise canceling function: Active	Maximum 24 hours
AAC	Ambient Sound Mode: Active	Maximum 24 hours
AAC	Inactive	Maximum 32 hours
SBC	Noise canceling function: Active	Maximum 24 hours
SBC	Ambient Sound Mode: Active	Maximum 24 hours
SBC	Inactive	Maximum 32 hours
LC3	Noise canceling function: Active	Maximum 22 hours
LC3	Ambient Sound Mode: Active	Maximum 22 hours
LC3	Inactive	Maximum 32 hours

- About 90 minutes of music playback is possible after 5 minutes charging.

#### Communication time

Noise canceling function/Ambient Sound Mode	Available operating time
Noise canceling function: Active	Maximum 16 hours
Ambient Sound Mode: Active	Maximum 16 hours
Inactive	Maximum 20 hours

#### Headphone cable connected (power is turned on)

Noise canceling function/Ambient Sound Mode	Available operating time
Noise canceling function: Active	Maximum 20 hours
Ambient Sound Mode: Active	Maximum 20 hours

Noise canceling function/Ambient Sound Mode	Available operating time
Inactive	Maximum 30 hours

### Hint

- By using the “Sound Connect” app, you can check which codec is used for a connection or switch the DSEE Ultimate™ function.

### Note

- Usage hours may be different from the time described above depending on the settings for the headset functions and usage conditions.
- If you set the following functions, the available operating time of the battery becomes shorter than the ones described above.
  - Listening mode
  - Equalizer
  - DSEE Ultimate
  - Speak-to-Chat
  - Service Link
  - Other changes to the default modes and functions made on the “Sound Connect” app

If you run the above settings at the same time, the available operating time of the battery becomes even shorter.

---

### Related Topic

- [Using the “Sound Connect” app](#)
- [Supported codecs](#)

TP1002085413

Wireless Noise Canceling Stereo Headset  
1000X THE COLLEXION

## Checking the remaining battery charge

You can check the remaining battery charge of the rechargeable battery in the following ways.

### Check on your smartphone

- When you are using an iPhone (iOS 13 or later)

When the headset is connected to an iPhone via an HFP (Hands-free Profile) Bluetooth connection, you can check the remaining battery charge of the headset on an iPhone. For details, refer to the operating instructions supplied with the iPhone.

The remaining charge which is displayed may differ from the actual remaining charge in some cases. This is a rough estimate.

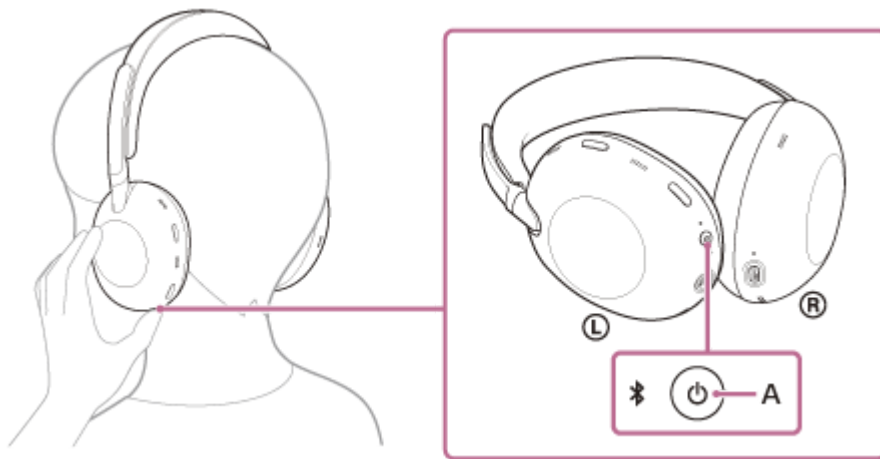
- When you are using an Android™ smartphone (OS 8.1 or later)

When the headset is connected to an Android smartphone via an HFP Bluetooth connection, you can check the remaining battery charge of the headset on the smartphone. For details, refer to the operating instructions supplied with the Android smartphone.

The remaining charge which is displayed may differ from the actual remaining charge in some cases. This is a rough estimate.

### Check with the power button

When you press the power button (A) while the headset is on, a voice guidance indicating the remaining battery charge can be heard.



“Battery about XX %” (The “XX” value indicates the approximate remaining charge.)

“Battery fully charged”

The remaining battery charge indicated by the voice guidance may differ from the actual remaining charge in some cases. This is a rough estimate.

The indicator also flashes in orange for about 15 seconds if the remaining battery charge is 10% or lower when the headset is turned on.

### Check with the voice guidance notification

When the rechargeable battery becomes low, the voice guidance will play in the following cases.

- When the headset is turned on
- When using the headset

When the battery becomes completely empty, an alarm sounds. The voice guidance plays, then the headset automatically turns off.

## Hint

- You can also check the remaining battery charge of the headset with the “Sound Connect” app. Android smartphones and iPhone both support this app.

## Note

- If the headset and smartphone are not connected with HFP, the remaining battery charge will not be correctly displayed.
- If you connect the headset to an iPhone or Android smartphone with Media audio (A2DP) only in a multipoint connection, the remaining battery charge will not be displayed correctly.
- The remaining battery charge may not be properly displayed in the following situations. In that case, repeatedly charge and discharge the battery multiple times. The remaining battery charge will then be properly displayed.
  - When using the headset for the first time after purchase
  - When the headset has not been used for a long period of time
  - Immediately after a software update

---

## Related Topic

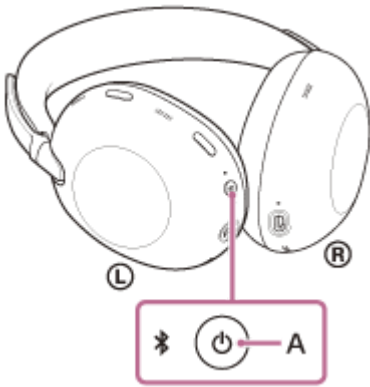
- [Using the “Sound Connect” app](#)
- [About the indicator](#)

TP1002085415

Wireless Noise Canceling Stereo Headset  
1000X THE COLLEXION

## Turning on the headset

- 1 Press and hold the power button (A) for about 2 seconds or more until the indicator flashes in blue.



### Related Topic

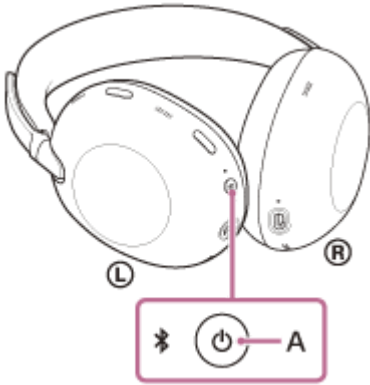
- [Turning off the headset](#)

TP1002085400

Wireless Noise Canceling Stereo Headset  
1000X THE COLLEXION

## Turning off the headset

- 1 Press and hold the power button (A) for about 2 seconds or more until the blue indicator turns off.



### Hint

- You can also turn off the headset with the “Sound Connect” app.
- The headset will automatically turn off after 15 minutes of not being worn. This setting can be changed using the “Sound Connect” app.
- When storing the headset in a bag or similar container, turn off the headset. Wearing detection may react incorrectly.

### Related Topic

- [Using the “Sound Connect” app](#)
- [Turning on the headset](#)

TP1002085396

## How to make a wireless connection to Bluetooth devices

---

You can enjoy music and hands-free calling with the headset wirelessly by using your device's Bluetooth function.

### Pairing

To use the Bluetooth function, you must register both devices that will connect with each other in advance. This process of registration is called "pairing".

Pair the headset and the device manually.

### Connecting to a paired device

Once a device is paired, it is not necessary to pair it again. Connect to devices already paired with the headset using the methods necessary for each device.

For details on pairing or connection methods, refer to the following Related Topic.

---

#### Related Topic

- [Pairing and connecting with an Android smartphone](#)
- [Pairing and connecting with an iPhone](#)
- [Pairing and connecting with a computer \(Windows® 11\)](#)
- [Pairing and connecting with a computer \(Mac\)](#)
- [Pairing and connecting with a Bluetooth device](#)
- [Connecting to a paired Android smartphone](#)
- [Connecting to a paired iPhone](#)
- [Connecting to a paired computer \(Windows 11\)](#)
- [Connecting to a paired computer \(Mac\)](#)
- [Connecting to a paired Bluetooth device](#)

TP1002085430

Wireless Noise Canceling Stereo Headset  
1000X THE COLLEXION

## Connecting with the “Sound Connect” app

Launch the “Sound Connect” app on your Android smartphone/iPhone to connect the headset to a smartphone or iPhone.



Sony Sound Connect 

### Note

- The connection between the headset and some smartphones or iPhones may become unstable when using the “Sound Connect” app. In that case, follow the procedures in [“Connecting to a paired Android smartphone”](#), or [“Connecting to a paired iPhone”](#) to connect to the headset.

### Related Topic

- [Using the “Sound Connect” app](#)
- [Pairing and connecting with an Android smartphone](#)
- [Pairing and connecting with an iPhone](#)
- [Pairing and connecting with a computer \(Windows® 11\)](#)
- [Pairing and connecting with a computer \(Mac\)](#)
- [Connecting to a paired Android smartphone](#)
- [Connecting to a paired iPhone](#)

TP1002087503

Wireless Noise Canceling Stereo Headset  
1000X THE COLLEXION

## Pairing and connecting with an Android smartphone

The operating procedure to register the device that you wish to connect to is called “pairing”. First, pair a device to use it with the headset for the first time.

Before starting the operating procedure, check the following.

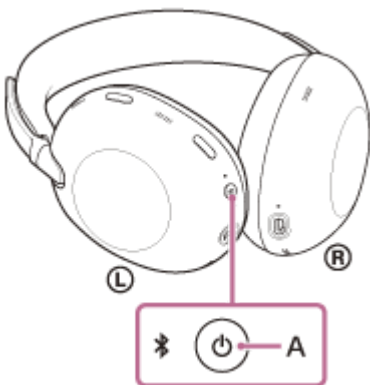
- The Android smartphone is placed within 1 m (3.2 ft) of the headset.
- The headset is charged sufficiently.
- The operating instructions for the Android smartphone are in hand.

### 1 Check the status of the headset.

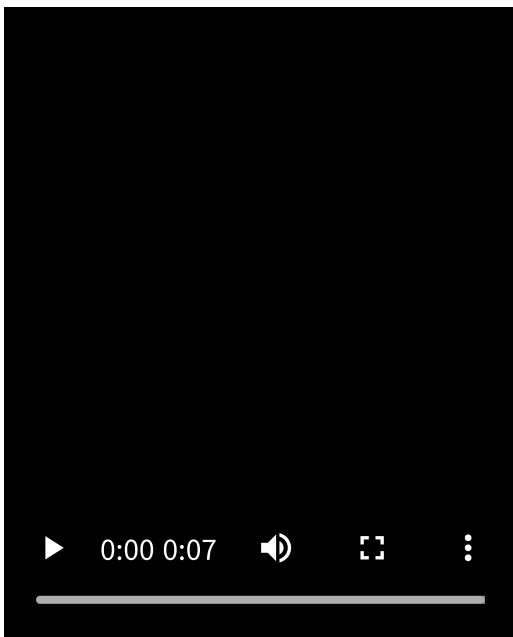
The headset enters pairing mode automatically in the following cases. Proceed to step 2.

- When you pair the headset with a device for the first time after purchasing the headset
- After initializing the headset and clearing all pairing information

When you pair a second or subsequent device, if the headset already has pairing information for other devices, enter pairing mode manually. Press and hold the Bluetooth button (A) for about 5 seconds or more.



The indicator repeatedly flashes in blue twice in a row. You will hear the voice guidance say, “Pairing”.



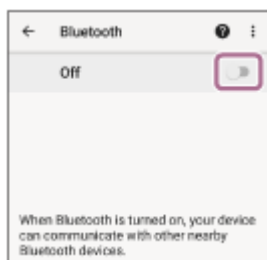
2 Unlock the screen of the Android smartphone if it is locked.

3 On your Android smartphone screen, select the following items.

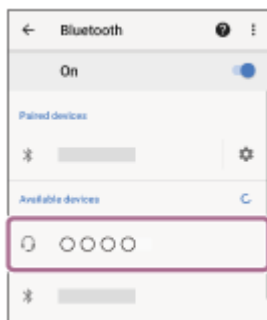
[Settings] - [Device connection] - [Bluetooth]



4 Touch the switch to turn on the Bluetooth function.



5 Touch [1000X THE COLLEXION].



If Passkey (\*) input is required, input "0000".

The headset and smartphone are paired and connected with each other.

You will hear a notification sound indicating that the connection is established.

If they are not connected, see "[Connecting to a paired Android smartphone](#)".

If [1000X THE COLLEXION] does not appear on your Android smartphone screen, try again from step 3.

(\*) A Passkey may be called "Passcode", "PIN code", "PIN number", or "Password".

### Hint

- The above operating procedure is an example. For more details, refer to the operating instructions supplied with the Android smartphone.
- To delete all Bluetooth pairing information, see "[Initializing the headset to restore factory settings](#)".

### Note

- If pairing is not established within 5 minutes, pairing mode is canceled. In this case, turn off the power and start the operating procedure again from step 1.
- Once Bluetooth devices are paired, there is no need to pair them again, except in the following cases:
  - If pairing information is deleted, such as after a repair

- When a 9th device is paired  
The headset can be paired with up to 8 devices. If you pair a 9th device, the pairing information with the oldest connection date and time will be overwritten with the information for the new device.
  - When the pairing information for the headset has been deleted from the connected Bluetooth device
  - When the headset is initialized  
All of the pairing information will be deleted. In this case, delete the pairing information for the headset from the connected device and then pair them again.
- The headset can be paired with multiple devices, but can only play music from 1 paired device at a time.

---

### Related Topic

- [How to make a wireless connection to Bluetooth devices](#)
- [Connecting to a paired Android smartphone](#)
- [Listening to music from a device via a Bluetooth connection](#)
- [Disconnecting Bluetooth connection \(after use\)](#)
- [Initializing the headset to restore factory settings](#)

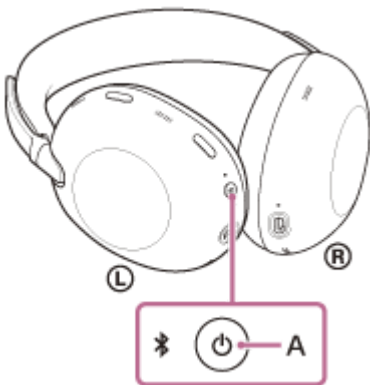
TP1002085450

## Connecting to a paired Android smartphone

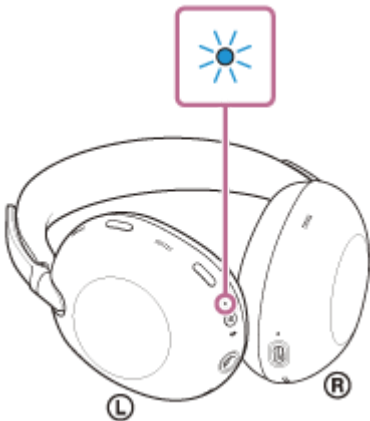
**1** Unlock the screen of the Android smartphone if it is locked.

**2** Turn on the headset.

Press and hold the power button (A) for about 2 seconds or more.



You will hear a notification sound indicating that the headset is turned on.  
The indicator continues to flash in blue even after you release your finger from the button.



If the headset has automatically connected to the last connected device, you will hear a notification sound indicating that the connection is established.

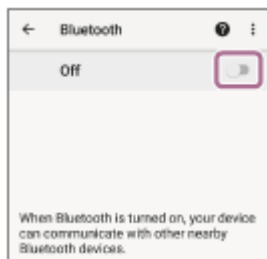
Check the connection status on the Android smartphone. If it is not connected, proceed to step 3.

**3** On your Android smartphone screen, select the following items.

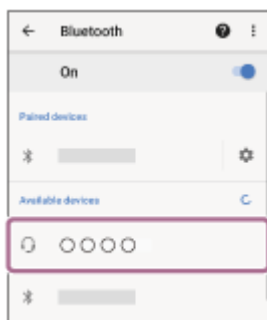
[Settings] - [Device connection] - [Bluetooth]



**4 Touch the switch to turn on the Bluetooth function.**



**5 Touch [1000X THE COLLEXION].**



You will hear a notification sound indicating that the connection is established.

**Hint**

- The above operating procedure is an example. For more details, refer to the operating instructions supplied with the Android smartphone.

**Note**

- When connecting, [1000X THE COLLEXION], [LE\_1000X THE COLLEXION], or both may be displayed on the connecting device. If both are displayed, select [1000X THE COLLEXION].
- If the last-connected Bluetooth device is placed near the headset, the headset may connect automatically to the device by simply turning on the headset. If this is the case, deactivate the Bluetooth function on the last-connected device or turn off the power.
- If you cannot connect your Android smartphone to the headset, delete the headset pairing information on your Android smartphone. Then, pair them again. For the operating procedures on your Android smartphone, refer to the operating instructions supplied with the Android smartphone.

**Related Topic**

- [How to make a wireless connection to Bluetooth devices](#)
- [Pairing and connecting with an Android smartphone](#)
- [Listening to music from a device via a Bluetooth connection](#)
- [Disconnecting Bluetooth connection \(after use\)](#)
- [Initializing the headset to restore factory settings](#)

TP1002085451

Wireless Noise Canceling Stereo Headset  
1000X THE COLLEXION

## Switching between Classic Audio and LE Audio connections with an Android smartphone

When connection is established using LE Audio, you can enjoy music from an Android smartphone with less sound delay. Set up with the “Sound Connect” app.

### Devices supporting LE Audio

The Android smartphone must support LE Audio.  
For the latest information on the compatible devices, refer to the support website.

### About LE Audio

- It supports the “LC3” codec.
- When connected via LE Audio, certain headset features may not work. For details, see “[Using the “Sound Connect” app](#)”.

### Switching to LE Audio connection

- 1 **Connect the headset to the Android smartphone via Bluetooth connection.**
- 2 **Launch the “Sound Connect” app and select the following items to switch the Bluetooth connection method from Classic Audio to LE Audio.**  
**[BLUETOOTH CONNECTION QUALITY] - [Low latency]**  
If [BLUETOOTH CONNECTION QUALITY] is not displayed, select the following items.  
[LE Audio connection setting for headphones] - [LE Audio Priority]
- 3 **Follow the screen displays on the “Sound Connect” app to switch between Classic Audio and LE Audio connections.**

### To switch to Classic Audio connection

Launch the “Sound Connect” app and select the following items.

- For Xperia 1 IV/5 IV  
[LE Audio connection setting for headphones] - [Classic Audio only (conventional connection method)]
- For devices other than Xperia 1 IV/5 IV  
[BLUETOOTH CONNECTION QUALITY] - [Prioritize Sound Quality] / [Prioritize Stable Connection]

#### Hint

- The above operating procedure is an example. For more details, refer to the operating instructions supplied with the Android smartphone.
- If the sound stutters or the connection is unstable, select [Prioritize Stable Connection] from [BLUETOOTH CONNECTION QUALITY].

- Using the “Sound Connect” app
- Connecting with the “Sound Connect” app
- Pairing and connecting with an Android smartphone
- Initializing the headset to restore factory settings

TP1002271846

5-070-672-11(1) Copyright 2026 Sony Corporation

Wireless Noise Canceling Stereo Headset  
1000X THE COLLEXION

## Pairing and connecting with an iPhone

The operating procedure to register the device that you wish to connect to is called “pairing”. First, pair a device to use it with the headset for the first time.

Before starting the operating procedure, check the following.

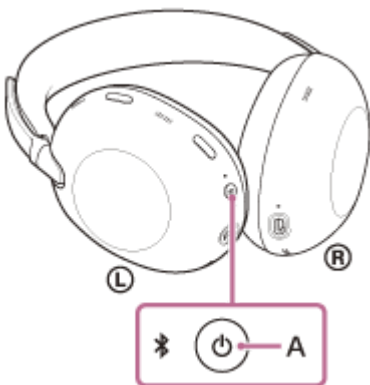
- The iPhone is placed within 1 m (3.2 ft) of the headset.
- The headset is charged sufficiently.
- The operating instructions for the iPhone are in hand.

### 1 Check the status of the headset.

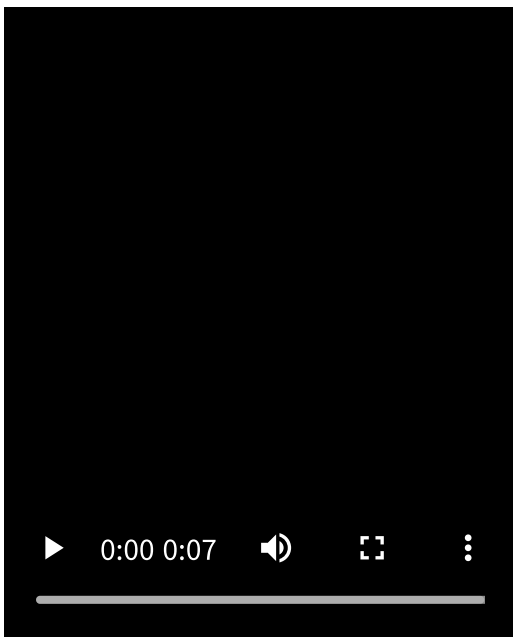
The headset enters pairing mode automatically in the following cases. Proceed to step 2.

- When you pair the headset with a device for the first time after purchasing the headset
- After initializing the headset and clearing all pairing information

When you pair a second or subsequent device, if the headset already has pairing information for other devices, enter pairing mode manually. Press and hold the Bluetooth button (A) for about 5 seconds or more.

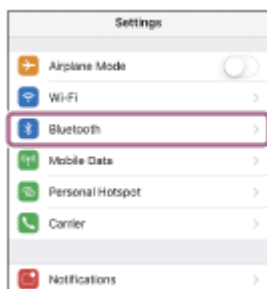


The indicator repeatedly flashes in blue twice in a row. You will hear the voice guidance say, “Pairing”.



2 Unlock the screen of the iPhone if it is locked.

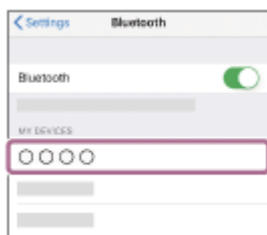
3 On your iPhone screen, go to [Settings] and touch [Bluetooth].



4 Touch the switch to turn on the Bluetooth function.



5 Touch [1000X THE COLLEXION].



If Passkey (\*) input is required, input "0000".

The headset and iPhone are paired and connected with each other.

You will hear a notification sound indicating that the connection is established.

If they are not connected, see ["Connecting to a paired iPhone"](#).

If [1000X THE COLLEXION] does not appear on your iPhone screen, try again from step 3.

(\*) A Passkey may be called "Passcode", "PIN code", "PIN number", or "Password".

## Hint

- The above operating procedure is an example. For more details, refer to the operating instructions supplied with the iPhone.
- To delete all Bluetooth pairing information, see ["Initializing the headset to restore factory settings"](#).

## Note

- If pairing is not established within 5 minutes, pairing mode is canceled. In this case, turn off the power and start the operating procedure again from step 1.
- Once Bluetooth devices are paired, there is no need to pair them again, except in the following cases:
  - If pairing information is deleted, such as after a repair
  - When a 9th device is paired  
The headset can be paired with up to 8 devices. If you pair a 9th device, the pairing information with the oldest connection date and time will be overwritten with the information for the new device.
  - When the pairing information for the headset has been deleted from the connected Bluetooth device

– When the headset is initialized

All of the pairing information will be deleted. In this case, delete the pairing information for the headset from the connected device and then pair them again.

- The headset can be paired with multiple devices, but can only play music from 1 paired device at a time.

---

### Related Topic

- [How to make a wireless connection to Bluetooth devices](#)
- [Connecting to a paired iPhone](#)
- [Listening to music from a device via a Bluetooth connection](#)
- [Disconnecting Bluetooth connection \(after use\)](#)
- [Initializing the headset to restore factory settings](#)

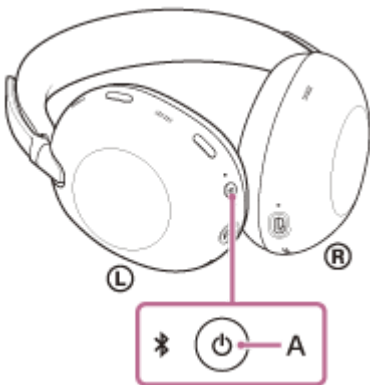
TP1002085506

## Connecting to a paired iPhone

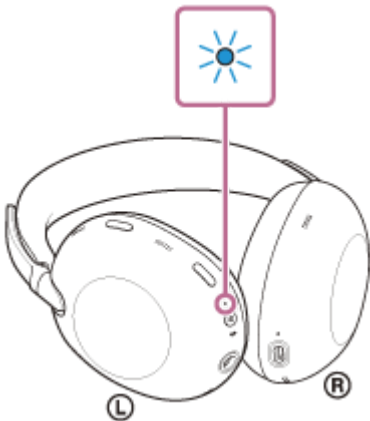
**1** Unlock the screen of the iPhone if it is locked.

**2** Turn on the headset.

Press and hold the power button (A) for about 2 seconds or more.



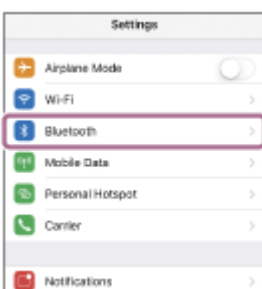
You will hear a notification sound indicating that the headset is turned on. The indicator continues to flash in blue even after you release your finger from the button.



If the headset has automatically connected to the last connected device, you will hear a notification sound indicating that the connection is established.

Check the connection status on the iPhone. If it is not connected, proceed to step 3.

**3** On your iPhone screen, go to [Settings] and touch [Bluetooth].



**4 Touch the switch to turn on the Bluetooth function.**



**5 Touch [1000X THE COLLEXION].**



You will hear a notification sound indicating that the connection is established.

**Hint**

- The above operating procedure is an example. For more details, refer to the operating instructions supplied with the iPhone.

**Note**

- When connecting, [1000X THE COLLEXION], [LE\_1000X THE COLLEXION], or both may be displayed on the connecting device. If both are displayed, select [1000X THE COLLEXION].
- If the last-connected Bluetooth device is placed near the headset, the headset may connect automatically to the device by simply turning on the headset. If this is the case, deactivate the Bluetooth function on the last-connected device or turn off the power.
- If you cannot connect your iPhone to the headset, delete the headset pairing information on your iPhone. Then, pair them again. For the operating procedures on your iPhone, refer to the operating instructions supplied with the iPhone.

**Related Topic**

- [How to make a wireless connection to Bluetooth devices](#)
- [Pairing and connecting with an iPhone](#)
- [Listening to music from a device via a Bluetooth connection](#)
- [Disconnecting Bluetooth connection \(after use\)](#)

TP1002085425

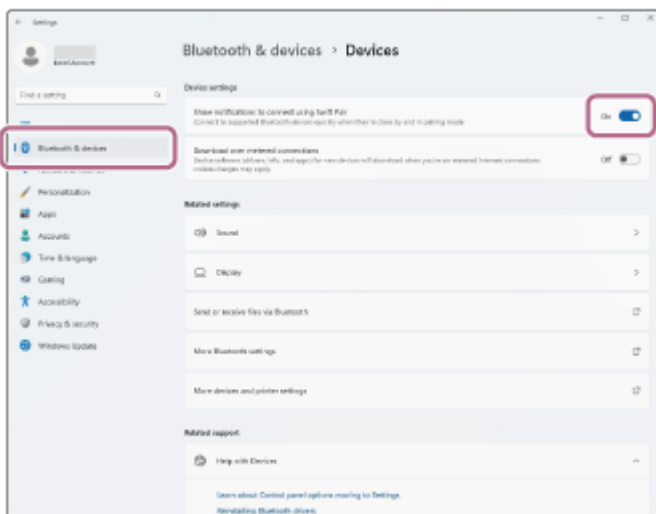
Wireless Noise Canceling Stereo Headset  
1000X THE COLLEXION

## Pairing and connecting with a computer (Windows® 11)

The operating procedure to register the device that you wish to connect to is called “pairing”. First, pair a device to use it with the headset for the first time.

Before starting the operating procedure, check the following.

- Your computer has a Bluetooth function that supports music playback connections (A2DP).
- When you use a video calling application on your computer, your computer has a Bluetooth function that supports calling connections (HFP/HSP).
- The computer is placed within 1 m (3.2 ft) of the headset.
- The headset is charged sufficiently.
- The operating instructions for the computer are in hand.
- Depending on the computer you are using, the built-in Bluetooth adaptor may need to be turned on. In the following cases, refer to the operating instructions supplied with your computer.
  - You do not know how to turn on the Bluetooth adaptor.
  - You want to know if your computer has a built-in Bluetooth adaptor.
- To use the Swift Pair function, click the following button, items, and switch in order to turn on the Swift Pair function. [Start] button - [Settings] - [Bluetooth & devices] - [Show notifications to connect using Swift Pair]

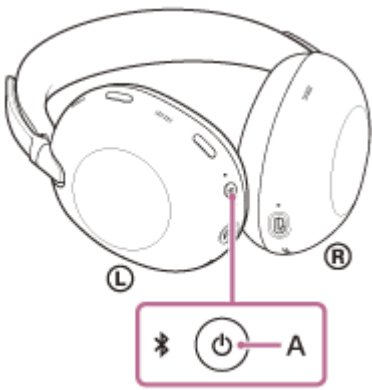


### 1 Check the status of the headset.

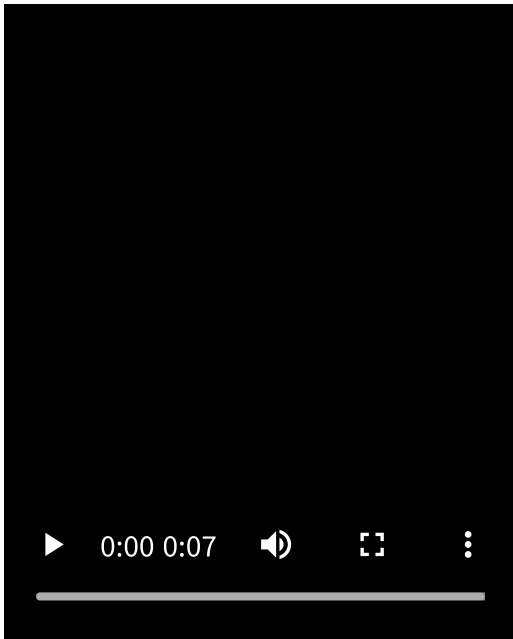
The headset enters pairing mode automatically in the following cases. Proceed to step 2.

- When you pair the headset with a device for the first time after purchasing the headset
- After initializing the headset and clearing all pairing information

When you pair a second or subsequent device, if the headset already has pairing information for other devices, enter pairing mode manually. Press and hold the Bluetooth button (A) for about 5 seconds or more.



The indicator repeatedly flashes in blue twice in a row. You will hear the voice guidance say, "Pairing".

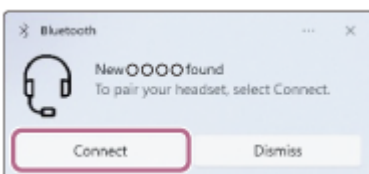


**2 Wake the computer up if the computer is in standby (sleep) or hibernation mode.**

To use the Swift Pair function, proceed to step 3.

To connect without using the Swift Pair function, proceed to step 4 and continue to step 8.

**3 Select [Connect] from the pop-up menu displayed on your computer screen.**

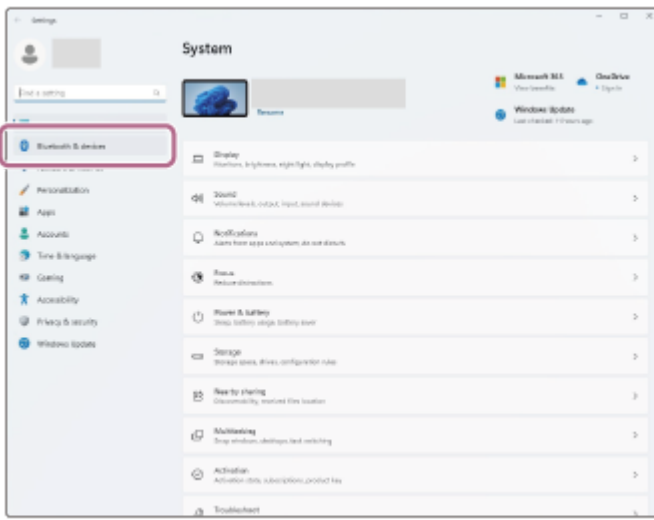


The headset and computer are paired and connected with each other.

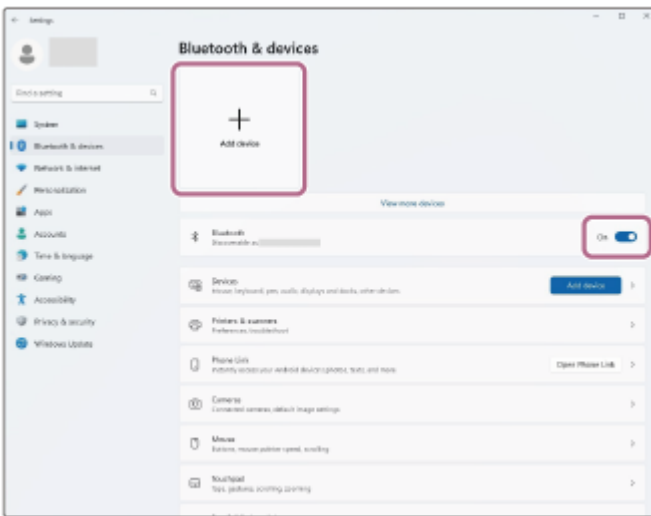
You will hear a notification sound indicating that the connection is established.

**4 On your computer screen, click the [Start] button, then [Settings].**

**5 Click [Bluetooth & devices].**



6 Click the [Bluetooth] switch to turn on the Bluetooth function. Click [Add device].



7 Click [Bluetooth].



8 Click [1000X THE COLLEXION].



If Passkey (\*) input is required, input "0000".

The headset and computer are paired and connected with each other.

You will hear a notification sound indicating that the connection is established.

If they are not connected, see ["Connecting to a paired computer \(Windows 11\)"](#).

If [1000X THE COLLEXION] does not appear on your computer screen, try again from step 4.

(\*) A Passkey may be called "Passcode", "PIN code", "PIN number", or "Password".

## Hint

- The above operating procedure is an example. For more details, refer to the operating instructions supplied with the computer.
- To delete all Bluetooth pairing information, see ["Initializing the headset to restore factory settings"](#).

## Note

- If pairing is not established within 5 minutes, pairing mode is canceled. In this case, turn off the power and start the operating procedure again from step 1.
- Once Bluetooth devices are paired, there is no need to pair them again, except in the following cases:
  - If pairing information is deleted, such as after a repair
  - When a 9th device is paired  
The headset can be paired with up to 8 devices. If you pair a 9th device, the pairing information with the oldest connection date and time will be overwritten with the information for the new device.
  - When the pairing information for the headset has been deleted from the connected Bluetooth device
  - When the headset is initialized  
All of the pairing information will be deleted. In this case, delete the pairing information for the headset from the connected device and then pair them again.
- The headset can be paired with multiple devices, but can only play music from 1 paired device at a time.

---

## Related Topic

- [How to make a wireless connection to Bluetooth devices](#)
- [Connecting to a paired computer \(Windows 11\)](#)
- [Listening to music from a device via a Bluetooth connection](#)
- [Making a video call on your computer](#)
- [Disconnecting Bluetooth connection \(after use\)](#)
- [Initializing the headset to restore factory settings](#)



Wireless Noise Canceling Stereo Headset  
1000X THE COLLEXION

## Pairing and connecting with a computer (Mac)

The operating procedure to register the device that you wish to connect to is called “pairing”. First, pair a device to use it with the headset for the first time.

### Compatible OS

macOS (version 12 or later)

Before starting the operating procedure, check the following.

- Your computer has a Bluetooth function that supports music playback connections (A2DP).
- When you use a video calling application on your computer, your computer has a Bluetooth function that supports calling connections (HFP/HSP).
- The computer is placed within 1 m (3.2 ft) of the headset.
- The headset is charged sufficiently.
- The operating instructions for the computer are in hand.
- Depending on the computer you are using, the built-in Bluetooth adaptor may need to be turned on. In the following cases, refer to the operating instructions supplied with your computer.
  - You do not know how to turn on the Bluetooth adaptor.
  - You want to know if your computer has a built-in Bluetooth adaptor.

- Set the computer speaker to the ON mode.

If the computer speaker is turned off, no sound can be heard from the headset.

🔊 : the icon showing the speaker is off

The icon below shows the computer speaker is turned on.

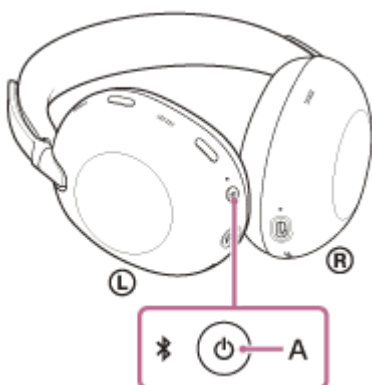


### 1 Check the status of the headset.

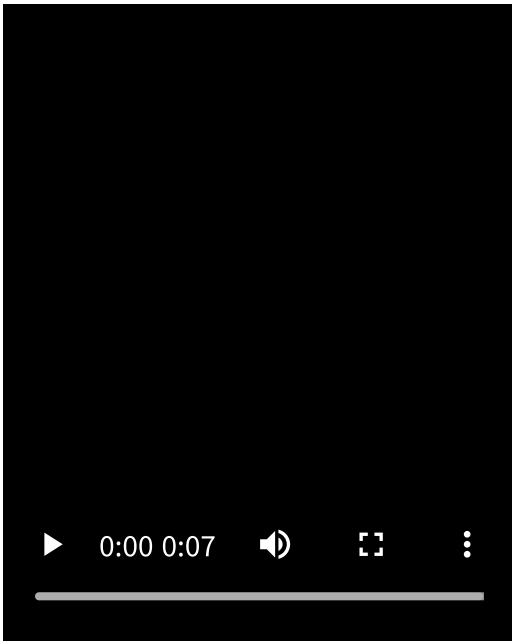
The headset enters pairing mode automatically in the following cases. Proceed to step 2.

- When you pair the headset with a device for the first time after purchasing the headset
- After initializing the headset and clearing all pairing information

When you pair a second or subsequent device, if the headset already has pairing information for other devices, enter pairing mode manually. Press and hold the Bluetooth button (A) for about 5 seconds or more.




The indicator repeatedly flashes in blue twice in a row. You will hear the voice guidance say, "Pairing".



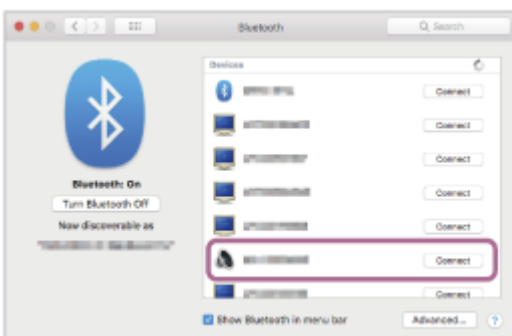
2 Wake the computer up if the computer is in standby (sleep) or hibernation mode.

3 Select the following items from the Dock at the bottom of your computer screen.  
[System Preferences] - [Bluetooth]

 : the system preferences icon



4 Select [1000X THE COLLEXION] on the [Bluetooth] screen and click [Connect].



If Passkey (\*) input is required, input "0000".

The headset and computer are paired and connected with each other.

You will hear a notification sound indicating that the connection is established.

If they are not connected, see ["Connecting to a paired computer \(Mac\)"](#).

If [1000X THE COLLEXION] does not appear on your computer screen, try again from step 3.

(\*) A Passkey may be called "Passcode", "PIN code", "PIN number", or "Password".

### Hint

- The above operating procedure is an example. For more details, refer to the operating instructions supplied with the computer.
- To delete all Bluetooth pairing information, see ["Initializing the headset to restore factory settings"](#).

### Note

- If pairing is not established within 5 minutes, pairing mode is canceled. In this case, turn off the power and start the operating procedure again from step 1.
- Once Bluetooth devices are paired, there is no need to pair them again, except in the following cases:
  - If pairing information is deleted, such as after a repair
  - When a 9th device is paired  
The headset can be paired with up to 8 devices. If you pair a 9th device, the pairing information with the oldest connection date and time will be overwritten with the information for the new device.
  - When the pairing information for the headset has been deleted from the connected Bluetooth device
  - When the headset is initialized  
All of the pairing information will be deleted. In this case, delete the pairing information for the headset from the connected device and then pair them again.
- The headset can be paired with multiple devices, but can only play music from 1 paired device at a time.

---

### Related Topic

- [How to make a wireless connection to Bluetooth devices](#)
- [Connecting to a paired computer \(Mac\)](#)
- [Listening to music from a device via a Bluetooth connection](#)
- [Making a video call on your computer](#)
- [Disconnecting Bluetooth connection \(after use\)](#)
- [Initializing the headset to restore factory settings](#)

TP1002087502

Wireless Noise Canceling Stereo Headset  
1000X THE COLLEXION

## Connecting to a paired computer (Windows 11)

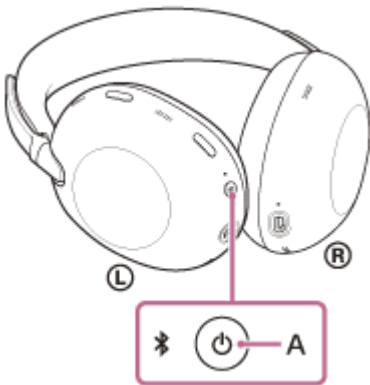
Before starting the operating procedure, check the following.

- Depending on the computer you are using, the built-in Bluetooth adaptor may need to be turned on. In the following cases, refer to the operating instructions supplied with your computer.
  - You do not know how to turn on the Bluetooth adaptor.
  - You want to know if your computer has a built-in Bluetooth adaptor.

**1** Wake the computer up if the computer is in standby (sleep) or hibernation mode.

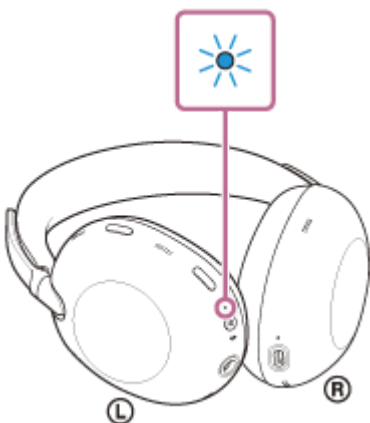
**2** Turn on the headset.

Press and hold the power button (A) for about 2 seconds or more.



You will hear a notification sound indicating that the headset is turned on.

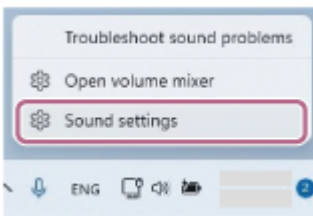
The indicator continues to flash in blue even after you release your finger from the button.



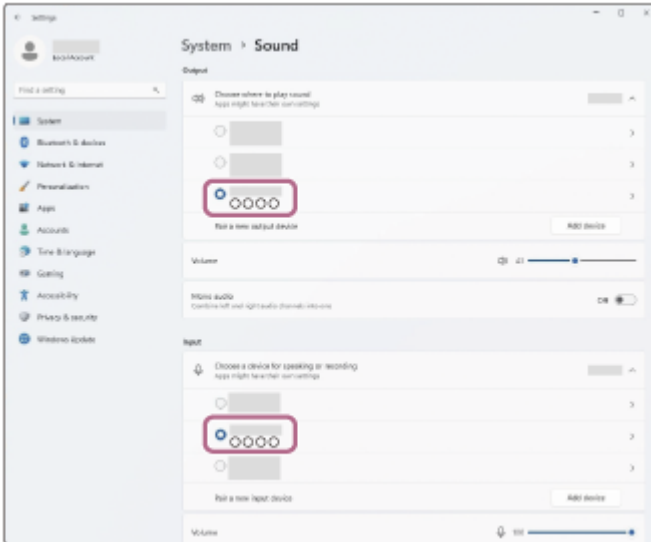
If the headset has automatically connected to the last connected device, you will hear a notification sound indicating that the connection is established.

Check the connection status on the computer. If it is not connected, proceed to step 3.

**3** On your computer screen, right-click the speaker icon on the toolbar, then select [Sound settings].

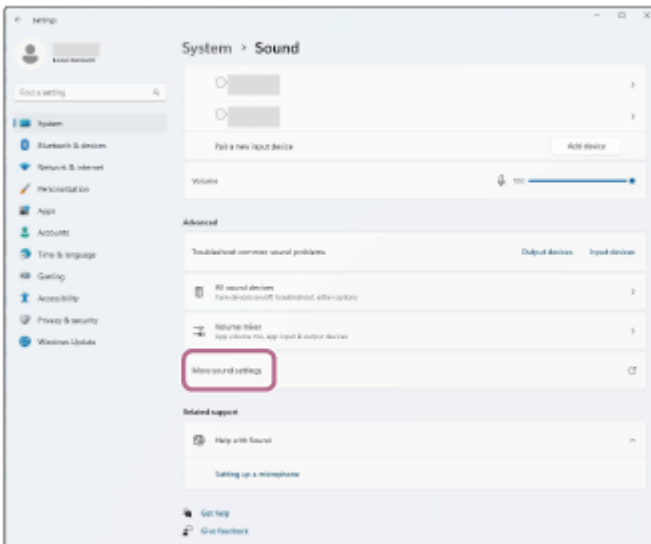


4 On the [Sound] screen, select [1000X THE COLLEXION] for [Output] and [Input].

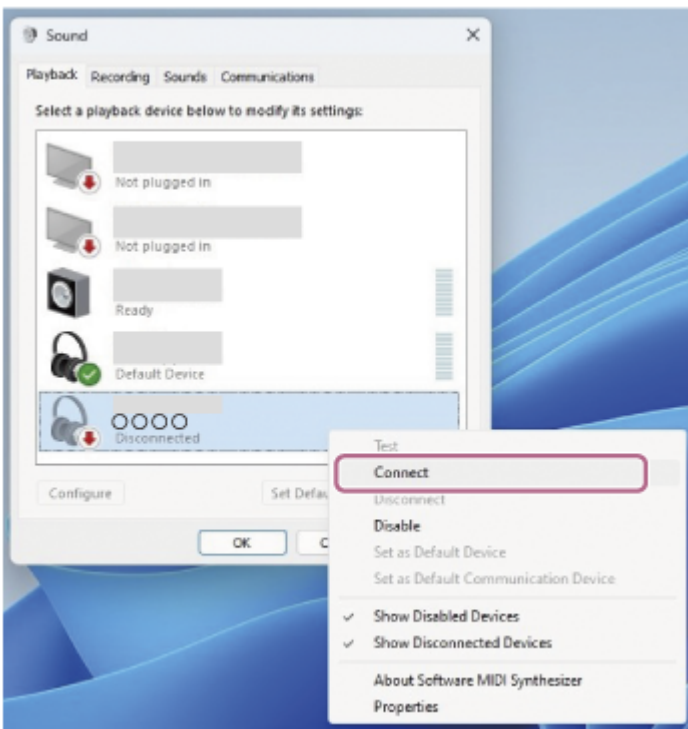


The headset and computer are paired and connected with each other. You will hear a notification sound indicating that the connection is established. If [1000X THE COLLEXION] is not displayed for [Output] and [Input], proceed to step 5.

5 Click [More sound settings].



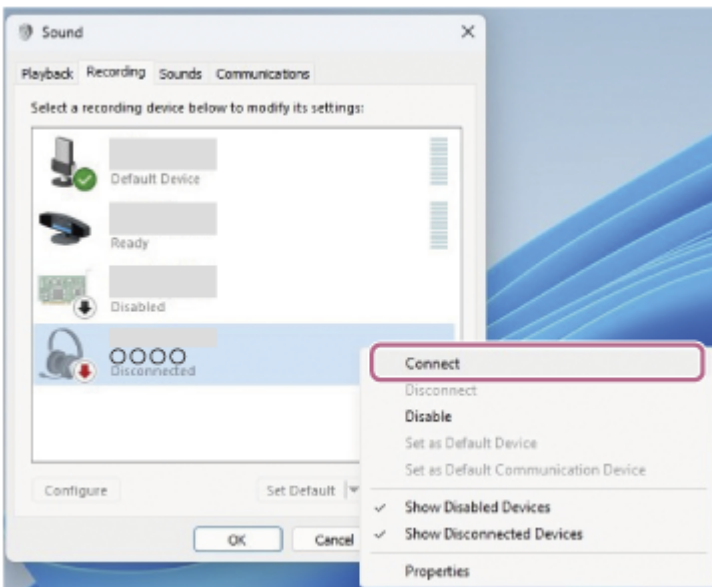
6 On the [Playback] tab on the [Sound] screen, select [1000X THE COLLEXION], right-click it, and select [Connect] from the displayed menu.



The connection is established.

You will hear a notification sound indicating that the connection is established.

- 7** On the [Recording] tab, select [1000X THE COLLEXION], right-click it, and select [Connect] from the displayed menu.



### Hint

- The above operating procedure is an example. For more details, refer to the operating instructions supplied with the computer.

### Note

- If the music playback sound quality is poor, check that the A2DP function which supports music playback connections is enabled in the computer settings. For more details, refer to the operating instructions supplied with the computer.
- If the last-connected Bluetooth device is placed near the headset, the headset may connect automatically to the device by simply turning on the headset. If this is the case, deactivate the Bluetooth function on the last-connected device or turn off the power.

- If you cannot connect your computer to the headset, delete the headset pairing information on your computer. Then, pair them again. For the operating procedures on your computer, refer to the operating instructions supplied with the computer.

---

### Related Topic

- [How to make a wireless connection to Bluetooth devices](#)
- [Pairing and connecting with a computer \(Windows® 11\)](#)
- [Listening to music from a device via a Bluetooth connection](#)
- [Disconnecting Bluetooth connection \(after use\)](#)

TP1002095496

5-070-672-11(1) Copyright 2026 Sony Corporation

Wireless Noise Canceling Stereo Headset  
1000X THE COLLEXION

## Connecting to a paired computer (Mac)

### Compatible OS

macOS (version 12 or later)

Before starting the operating procedure, check the following.

- Depending on the computer you are using, the built-in Bluetooth adaptor may need to be turned on. In the following cases, refer to the operating instructions supplied with your computer.
  - You do not know how to turn on the Bluetooth adaptor.
  - You want to know if your computer has a built-in Bluetooth adaptor.

- Set the computer speaker to the ON mode.

If the computer speaker is turned off, no sound can be heard from the headset.

🔊 : the icon showing the speaker is off

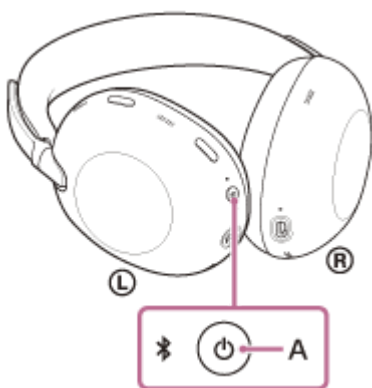
The icon below shows the computer speaker is turned on.



- 1 **Wake the computer up if the computer is in standby (sleep) or hibernation mode.**

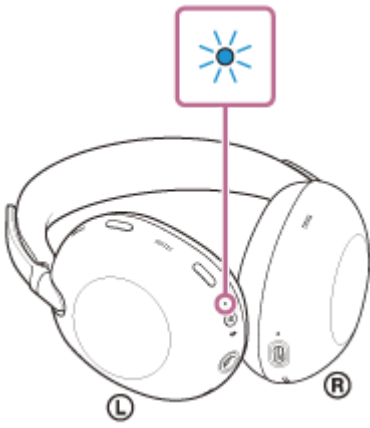
- 2 **Turn on the headset.**

Press and hold the power button (A) for about 2 seconds or more.



You will hear a notification sound indicating that the headset is turned on.


The indicator continues to flash in blue even after you release your finger from the button.



If the headset has automatically connected to the last connected device, you will hear a notification sound indicating that the connection is established.

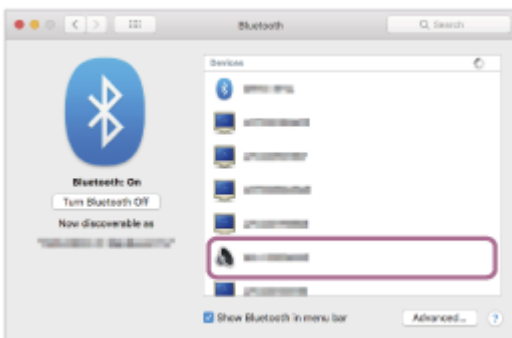
Check the connection status on the computer. If it is not connected, proceed to step 3.

**3 Select the following items from the Dock at the bottom of your computer screen. [System Preferences] - [Bluetooth]**

 : the system preferences icon



**4 Click [1000X THE COLLEXION] on the [Bluetooth] screen while pressing the computer Control button and select [Connect] from the pop-up menu.**



The connection is established. You will hear a notification sound indicating that the connection is established.

**Hint**

- The above operating procedure is an example. For more details, refer to the operating instructions supplied with the computer.

### Note

- If the music playback sound quality is poor, check that the A2DP function which supports music playback connections is enabled in the computer settings. For more details, refer to the operating instructions supplied with the computer.
- If the last-connected Bluetooth device is placed near the headset, the headset may connect automatically to the device by simply turning on the headset. If this is the case, deactivate the Bluetooth function on the last-connected device or turn off the power.
- If you cannot connect your computer to the headset, delete the headset pairing information on your computer. Then, pair them again. For the operating procedures on your computer, refer to the operating instructions supplied with the computer.

---

### Related Topic

- [How to make a wireless connection to Bluetooth devices](#)
- [Pairing and connecting with a computer \(Mac\)](#)
- [Listening to music from a device via a Bluetooth connection](#)
- [Disconnecting Bluetooth connection \(after use\)](#)

TP1002087500

Wireless Noise Canceling Stereo Headset  
1000X THE COLLEXION

## Pairing and connecting with a Bluetooth device

The operating procedure to register the device that you wish to connect to is called “pairing”. First, pair a device to use it with the headset for the first time.

Before starting the operating procedure, check the following.

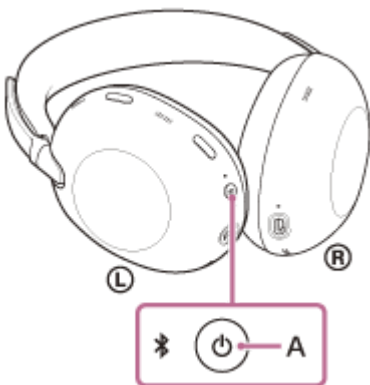
- The Bluetooth device is placed within 1 m (3.2 ft) of the headset.
- The headset is charged sufficiently.
- The operating instructions for the Bluetooth device are in hand.

### 1 Check the status of the headset.

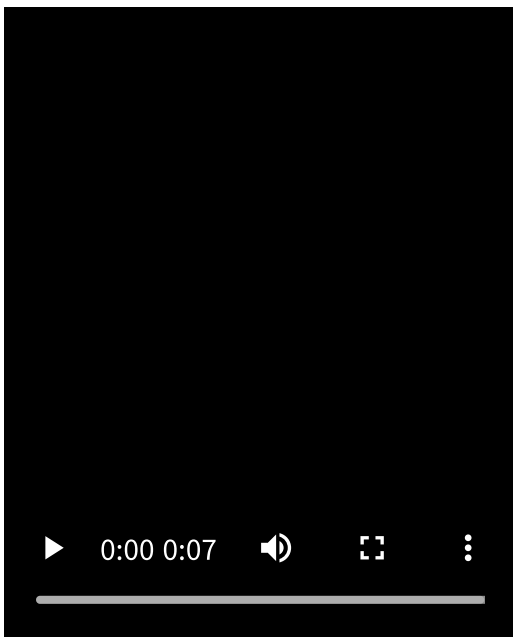
The headset enters pairing mode automatically in the following cases. Proceed to step 2.

- When you pair the headset with a device for the first time after purchasing the headset
- After initializing the headset and clearing all pairing information

When you pair a second or subsequent device, if the headset already has pairing information for other devices, enter pairing mode manually. Press and hold the Bluetooth button (A) for about 5 seconds or more.



The indicator repeatedly flashes in blue twice in a row. You will hear the voice guidance say, “Pairing”.



## 2 Perform the pairing procedure on the Bluetooth device to search for this headset.

[1000X THE COLLEXION] will be displayed on the list of detected devices on the screen of the Bluetooth device. If it is not displayed, repeat from step 1.

## 3 Select [1000X THE COLLEXION] displayed on the screen of the Bluetooth device for pairing.

If Passkey (\*) input is required, input "0000".

(\*) A Passkey may be called "Passcode", "PIN code", "PIN number", or "Password".

## 4 Make the Bluetooth connection from the Bluetooth device.

Some devices automatically connect with the headset when pairing is complete.

You will hear a notification sound indicating that the connection is established.

If they are not connected, see "[Connecting to a paired Bluetooth device](#)".

### Hint

- The above operating procedure is an example. For more details, refer to the operating instructions supplied with the Bluetooth device.
- To delete all Bluetooth pairing information, see "[Initializing the headset to restore factory settings](#)".

### Note

- If pairing is not established within 5 minutes, pairing mode is canceled. In this case, turn off the power and start the operating procedure again from step 1.
- Once Bluetooth devices are paired, there is no need to pair them again, except in the following cases:
  - If pairing information is deleted, such as after a repair
  - When a 9th device is paired  
The headset can be paired with up to 8 devices. If you pair a 9th device, the pairing information with the oldest connection date and time will be overwritten with the information for the new device.
  - When the pairing information for the headset has been deleted from the connected Bluetooth device
  - When the headset is initialized  
All of the pairing information will be deleted. In this case, delete the pairing information for the headset from the connected device and then pair them again.
- The headset can be paired with multiple devices, but can only play music from 1 paired device at a time.

### Related Topic

- [How to make a wireless connection to Bluetooth devices](#)
- [Connecting to a paired Bluetooth device](#)
- [Listening to music from a device via a Bluetooth connection](#)
- [Disconnecting Bluetooth connection \(after use\)](#)
- [Initializing the headset to restore factory settings](#)

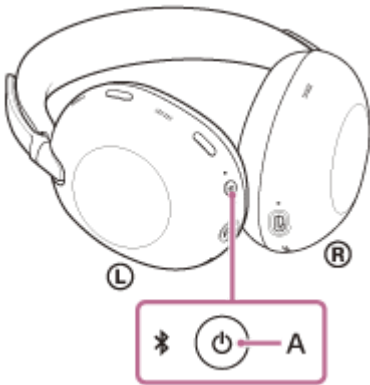
TP1002085444

Wireless Noise Canceling Stereo Headset  
1000X THE COLLEXION

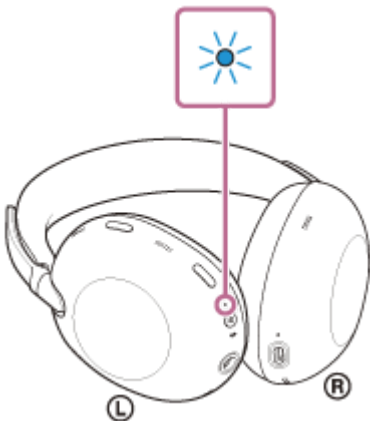
## Connecting to a paired Bluetooth device

### 1 Turn on the headset.

Press and hold the power button (A) for about 2 seconds or more.



You will hear a notification sound indicating that the headset is turned on.  
The indicator continues to flash in blue even after you release your finger from the button.



If the headset has automatically connected to the last connected device, you will hear a notification sound indicating that the connection is established.

Check the connection status on the Bluetooth device. If it is not connected, proceed to step 2.

### 2 Make the Bluetooth connection from the Bluetooth device.

For the operating procedures on your Bluetooth device, refer to the operating instructions supplied with the Bluetooth device.

When connected, you will hear a notification sound indicating that the connection is established.

#### Hint

- The above operating procedure is an example. For more details, refer to the operating instructions supplied with the Bluetooth device.

#### Note

- When connecting, [1000X THE COLLEXION], [LE\_1000X THE COLLEXION], or both may be displayed on the connecting device. If both are displayed, select [1000X THE COLLEXION].
- If the last-connected Bluetooth device is placed near the headset, the headset may connect automatically to the device by simply turning on the headset. If this is the case, deactivate the Bluetooth function on the last-connected device or turn off the power.
- If you cannot connect your Bluetooth device to the headset, delete the headset pairing information on your Bluetooth device. Then, pair them again. For the operating procedures on your Bluetooth device, refer to the operating instructions supplied with the Bluetooth device.

---

## Related Topic

- [How to make a wireless connection to Bluetooth devices](#)
- [Pairing and connecting with a Bluetooth device](#)
- [Listening to music from a device via a Bluetooth connection](#)
- [Disconnecting Bluetooth connection \(after use\)](#)

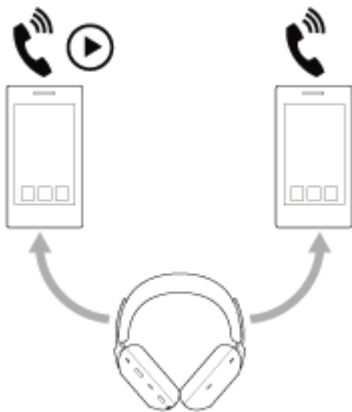
TP1002085445

Wireless Noise Canceling Stereo Headset  
1000X THE COLLEXION

## Connecting the headset to 2 devices simultaneously (multipoint connection)

The headset can be simultaneously connected to 2 devices via Bluetooth connections, allowing you to perform the following.

- **Waiting for an incoming call for 2 smartphones**  
You can listen to music played on one smartphone with the headset, wait for an incoming call for both smartphones, and talk if an incoming call arrives.



- **Switching music playback between 2 devices**  
You can switch the music playback from one device to the other without performing a Bluetooth reconnection.



## Connecting the headset to 2 devices simultaneously via Bluetooth connections

- 1 **Pair the headset with 2 devices, respectively.**
- 2 **Operate the first device to establish a Bluetooth connection with the headset.**
- 3 **Operate the second device to establish a Bluetooth connection with the headset.**

The following occurs when attempting to connect a paired third device to a headset via a Bluetooth connection while 2 devices are already connected via Bluetooth connections.

The Bluetooth connection with the device that was last playing music will be maintained.

The Bluetooth connection with the other device will be disconnected.

Then a Bluetooth connection between the third device and the headset is established.

## Music playback when the headset is connected to 2 devices via Bluetooth connections

- When playing music by operating the headset, the music is played from the device that played last.
- If you start playback by operating the second device while playing music on the first device, the music of the second device will be heard via the headset.

## Talking on the phone when the headset is connected to 2 devices via Bluetooth connections

- When the headset is connected to 2 smartphones via Bluetooth connections simultaneously, both devices will be in standby mode.
- When an incoming call arrives to the first device, a ring tone is heard via the headset.  
When an incoming call arrives to the second device while talking on the headset, a ring tone is heard overlapping the call on the first device. In this case, you can use the headset to answer or reject the second call, but you cannot end the first call.

If you want to end the first call, you will need to operate the connected device.

If the second call is received without finishing the first call, the first call will continue silently. When the second call is finished, the call will return to the first call.

### Note

- If the connected device switches at an unintended time, you may be able to prevent the device from switching by turning off the notification and operation sound on your smartphone or lowering the volume.
- By using the “Sound Connect” app, you can set the device to continue playing music from the previously used audio source.

---

### Related Topic

- [Using the “Sound Connect” app](#)
- [How to make a wireless connection to Bluetooth devices](#)
- [Supported codecs](#)

TP1002092198

Wireless Noise Canceling Stereo Headset  
1000X THE COLLEXION

## Switching audio between multiple devices with “audio switch”

The “audio switch” function is a Google feature that switches audio between Android devices. Headsets that support “audio switch” can connect to multiple devices. When you use your headset on devices with “audio switch” turned on, the audio heard from your headset seamlessly switches between devices. Your device notifies you when the audio has switched devices.

### Compatible smartphones

Android 8.0 or later

For details on “audio switch”, refer to the following URL.

[https://support.google.com/android/?p=switch\\_audio](https://support.google.com/android/?p=switch_audio)

To use this function, you need to connect your headset and device via Google Fast Pair.

For details on Google Fast Pair, refer to the following URL.

<https://support.google.com/android/answer/9417604>

### Note

- The specifications of “audio switch” are subject to change without notice.

TP1002271847

Wireless Noise Canceling Stereo Headset  
1000X THE COLLEXION

## Sharing music with “Auracast™ broadcast audio”

---

“Auracast™ broadcast audio” is a feature of LE Audio.

Headsets that support “Auracast™ broadcast audio” allow you to enjoy the same music simultaneously on multiple headsets from a single smartphone.

### Note

- A connected device that supports “Auracast™ broadcast audio” is required.  
For details, refer to the operating instructions supplied with the connected device.

TP1002271848

Wireless Noise Canceling Stereo Headset  
1000X THE COLLEXION

## Disconnecting Bluetooth connection (after use)

---

**1 Disconnect the Bluetooth connection by operating the Bluetooth device.**

You will hear a notification sound.

**2 Turn off the headset.**

You will hear a notification sound.

### Hint

- When you finish playing music, the Bluetooth connection may terminate automatically depending on the Bluetooth device.

---

### Related Topic

- [Turning off the headset](#)

TP1002085502

Wireless Noise Canceling Stereo Headset  
1000X THE COLLEXION

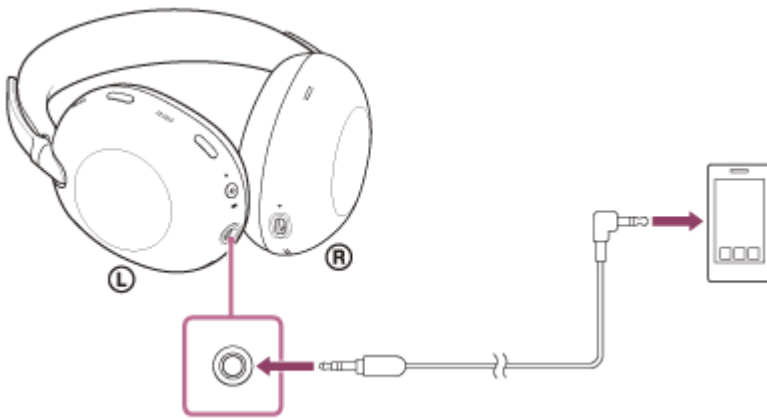
## Using the supplied headphone cable

You can use the headset as noise canceling headphones while the headset is connected to a device via the supplied headphone cable and the headset is turned on.

The headset supports High-Resolution Audio playback.

### 1 Connect a playback device to the headphone cable input jack with the supplied headphone cable.

Be sure to connect the L-shaped plug into the connecting device.



### 2 Turn on the headset.

You will hear a notification sound indicating that the headset is turned on.

#### Hint

- If you disconnect the headphone cable from the headset while the headset is turned on, you can enjoy music and calls wirelessly using the Bluetooth function.
- When an incoming call arrives, a ring tone is heard via the headset. Answer the call using your smartphone, and talk using the microphone of the phone. You can hear the caller's voice from the headset. If you disconnect the headphone cable from the smartphone, you can talk using the microphone and speaker of the phone.

#### Note

- Use the supplied headphone cable only.
- The headset cannot be used when the headset is turned off.
- When plugging or unplugging the cable, hold the plug and plug it straight into the headphone cable input jack. Pulling on the cable or applying excessive force may cause it to break.
- Make sure the plug is fully inserted. If the plug is not fully inserted, sound may not be heard.
- When using the headphone cable, the Bluetooth function cannot be used.
- You can use Quick Attention Mode and Speak-to-Chat while the headset is connected to a device via the headphone cable and the headset is turned on. Perform operating procedures, such as adjusting the volume and play/pause, on the playback device.
- When using a headphone cable, the listening mode setting is disabled. Additionally, the headset controls are disabled.

- When talking on the phone by connecting the headphone cable with the headset, disable Speak-to-Chat. If Speak-to-Chat is enabled, the caller's voice will not be heard from the headset.

---

### Related Topic

- [Using the noise canceling function](#)
- [Listening to ambient sound during music playback \(Ambient Sound Mode\)](#)
- [Listening to ambient sound quickly \(Quick Attention Mode\)](#)
- [Speaking with someone while wearing the headset \(Speak-to-Chat\)](#)

TP1002085493

Wireless Noise Canceling Stereo Headset  
1000X THE COLLEXION

## Listening to music from a device via a Bluetooth connection

If your Bluetooth device supports the following profiles, you can enjoy listening to music and control the device from your headset via a Bluetooth connection.

- A2DP (Advanced Audio Distribution Profile)  
You can enjoy high-quality music wirelessly.
- AVRCP (Audio Video Remote Control Profile)  
You can adjust the volume and other settings.

The operating procedure may vary depending on the Bluetooth device. Refer to the operating instructions supplied with the Bluetooth device.

### 1 Connect the headset to a Bluetooth device.

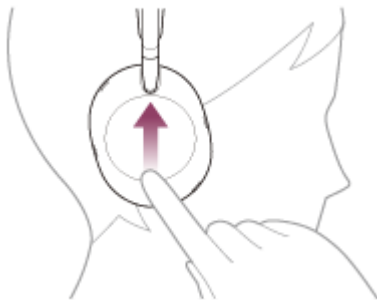
### 2 Put the headset units on your ears.

See "[Wearing the headset](#)" for how to put the headset on your ears.

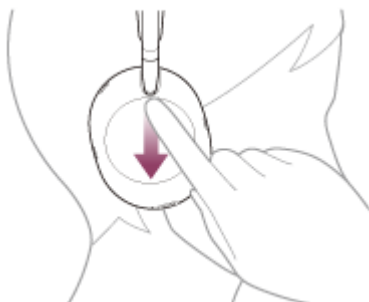
### 3 Operate the Bluetooth device to start playback and adjust the volume to a moderate level.

### 4 Adjust the volume using the touch sensor control panel of the headset.

- To increase the volume:  
Swipe up repeatedly until the volume reaches the desired level.



- To lower the volume:  
Swipe down repeatedly until the volume reaches the desired level.



- To change the volume continuously:  
Swipe up or down and hold. Release at the desired volume level.

When the volume reaches the maximum or minimum, an alarm sounds.

#### Hint

- The headset supports SCMS-T content protection. You can enjoy music and other audio on the headset from a device such as a portable TV that supports SCMS-T content protection.
- Depending on the Bluetooth device, it may be necessary to adjust the volume or set the audio output setting on the device.
- The headset volume during a call and during music playback can be independently adjusted. Even if you change the volume during music playback, the volume of a call does not change.

#### Note

- If the communication condition is poor, the Bluetooth device may malfunction in response to the operating procedure on the headset.

---

#### Related Topic

- [How to make a wireless connection to Bluetooth devices](#)
- [Controlling the audio device \(Bluetooth connection\)](#)
- [Using the noise canceling function](#)

TP1002085442

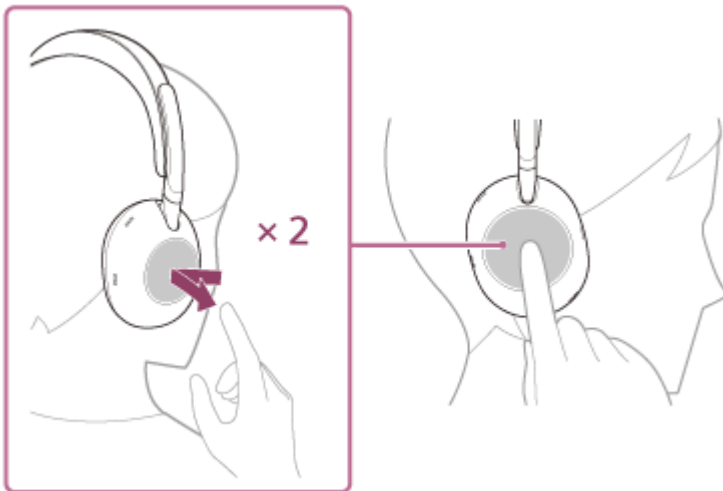
Wireless Noise Canceling Stereo Headset  
1000X THE COLLEXION

## Controlling the audio device (Bluetooth connection)

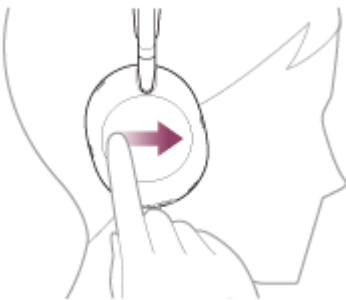
If your Bluetooth device supports the AVRCP profile's operating function, the following operating procedures are available. The available functions may vary depending on the Bluetooth device, so refer to the operating instructions supplied with the device.

You can use the touch sensor control panel to perform the following actions.

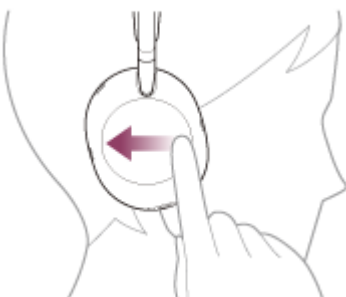
- To play or pause:  
Tap twice quickly with an interval of about 0.4 seconds between taps.



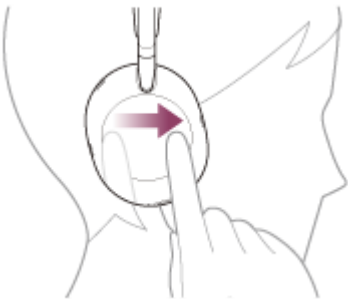
- To skip to the beginning of the next track:  
Swipe forward and release.



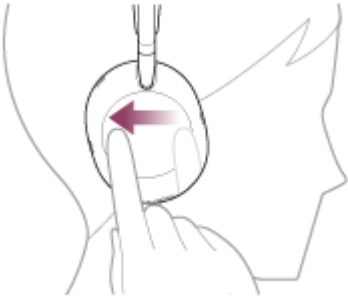
- To skip to the beginning of the previous track or the current track during playback:  
Swipe backward and release.



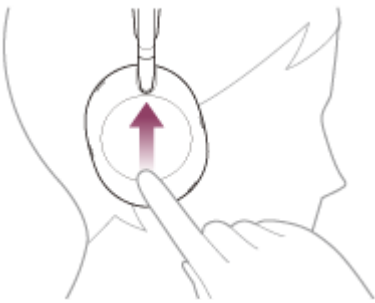
- To fast-forward:  
Swipe forward and hold. It takes a while until fast-forwarding starts. Release at the desired playback point.



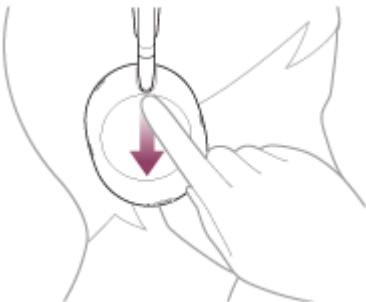
- To fast-reverse:  
Swipe backward and hold. It takes a while until fast-reversing starts. Release at the desired playback point.



- To increase the volume:  
Swipe up repeatedly until the volume reaches the desired level.



- To lower the volume:  
Swipe down repeatedly until the volume reaches the desired level.



- To change the volume continuously:  
Swipe up or down and hold. Release at the desired volume level.

When the volume reaches the maximum or minimum, an alarm sounds.

**Note**

- If the communication condition is poor, the Bluetooth device may malfunction in response to the operating procedure on the headset.
- The available functions may vary depending on the connected device, the music software, or app used. In some cases, the device may function differently or may not work even if the above operating procedures described are performed.



Wireless Noise Canceling Stereo Headset  
1000X THE COLLEXION

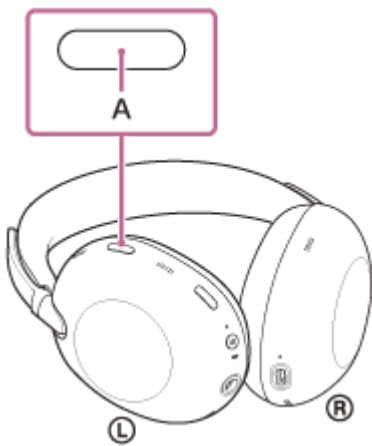
## Switching sound settings according to the content or usage scenario (listening mode)

When the headset is connected via Bluetooth, you can enjoy music in a listening mode suited to the playback content or usage scenario. Listening modes can be switched easily using the headset controls.

### 1 Turn on the headset.

You will hear a notification sound indicating that the headset is turned on.

### 2 Press the listening mode button to switch to your preferred listening mode.



Each time the button is pressed, the settings switch as follows.

You will hear a voice guidance and notification sound each time the setting is changed.

- Standard
- Music
- Cinema
- Game
- Background Music

### Hint

- At the time of purchase, only “Standard,” “Music,” and “Cinema” can be switched using the listening mode button. Setting on the “Sound Connect” app is required for other listening modes.
- You can also switch the listening modes using the “Sound Connect” app.

### Note

- The listening mode setting is disabled in the following cases.
  - During call
  - When using a headset with a headphone cable connected
- The listening mode setting is maintained even after the headset is turned off. When the headset is turned on, you can enjoy the sound with the same setting.



Wireless Noise Canceling Stereo Headset  
1000X THE COLLEXION

## About 360 Reality Audio

---

360 Reality Audio is a new music experience using Sony's 360 three-dimensional audio technology. Positional information is attached to each sound source such as vocals, chorus, and musical instruments, and are placed in a spherical space. Listeners can experience a three-dimensional sound field as if they are immersed in a live performance of the artists.

### Conditions of use

Download and use a music streaming service app that supports 360 Reality Audio on your smartphone or tablet equipped with iOS or Android. The app may require a fee.

By optimizing the sound field and the acoustic feature of headset with the "Sound Connect" app, you can enjoy a more realistic sense of reality.

For details on 360 Reality Audio, refer to the following URL.

<https://www.sony.net/360RA/>

#### Note

- Service is not available in certain countries and regions.

TP1002086611

Wireless Noise Canceling Stereo Headset  
1000X THE COLLEXION

## Enjoying seamless playback with speakers (Auto Switch)

You can enjoy wireless playback while having the audio output source automatically switched between the headset and the speaker without operating the headset or the speaker.

The Auto Switch function requires both the headset and speaker to be compatible with devices that support Auto Switch. Set up with the “Sound Connect” app.

For details on the Auto Switch compatible devices, refer to the following URL.

[https://www.sony.net/asw\\_comp\\_hp](https://www.sony.net/asw_comp_hp)

Before using Auto Switch, make sure of the following:

- Install the “Sound Connect” app on your smartphone.
- Update the software of the speaker and headset to the latest version.

### 1 Pair the Auto Switch compatible speaker with your smartphone that has the “Sound Connect” app installed.

If already paired, connect the speaker to your smartphone.

### 2 Check that the Bluetooth standby function of the speaker is enabled in the “Sound Connect” app.

### 3 Turn off the speaker.

### 4 Connect the headset to your smartphone and follow the on-screen instructions from Auto Switch to enable the linkage with the speaker.

### 5 Start playing music on your smartphone.

Start playing music on the smartphone on which the “Sound Connect” app is installed and the Auto Switch settings are specified.

When you turn off the headset while music playback from the headset is in progress, the audio output source for music playback is automatically switched to the speaker.

If the audio output source is not switched as expected, try bringing the speaker and the headset closer to each other.

When you put on the headset while music playback from the speaker is in progress, the audio output source for music playback is automatically switched to the headset.

## To adjust the volume

Adjust the volume on the headset or speaker during playback. Even if you change the volume, the volume setting on your headset or speaker that is not playing music will not be affected.

## To disable Auto Switch

Cancel the link on the “Sound Connect” app. Initializing the headset or the linked speaker cancels the link as well.

### Hint

- If you do not want to automatically switch the audio output source while the speaker linkage is enabled, pause music playback on the smartphone beforehand.

**Note**

- Auto Switch does not work for the hands-free function of the connected smartphone.

TP1002271850

5-070-672-11(1) Copyright 2026 Sony Corporation

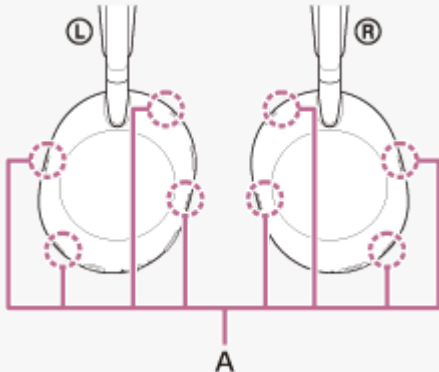
Wireless Noise Canceling Stereo Headset  
1000X THE COLLEXION

## What is noise canceling?

The noise canceling function generates antiphase sound against surrounding noises such as sounds from vehicles or air conditioners indoors. It reduces the surrounding noises by canceling them out.

### Note

- The Auto NC Optimizer function automatically optimizes the noise canceling performance according to changes in the wearing condition and usage environment. Therefore, you may notice fluctuations in the noise canceling effect depending on the situation.
- Depending on the type of noise or if it is used in a very quiet environment, you may not feel the noise canceling effects, or you may feel that some noise is increased.
- When you are wearing the headset, depending on how you wear the headset, the noise canceling effects may be decreased or a beeping sound (feedback) may be heard. In this case, take off the headset and put it on again.
- The noise canceling function works primarily on noise in the low frequency band such as vehicles and air conditioning. While noise is reduced, it is not completely canceled.
- When you use the headset in a car or a bus, noise may occur depending on street conditions.
- Smartphones may cause interference and noise. Should this occur, move the headset further away from the smartphone.
- Do not cover the microphones (A) on the left and right units of the headset with your hands or other objects. The effect of the noise canceling function or Ambient Sound Mode may not work properly or a beeping sound (feedback) may occur. If any of this is the case, remove your hands or other objects from the left and right microphones.



For details on how to use the noise canceling function, refer to the following Related Topic.

### Related Topic

- [Using the noise canceling function](#)

TP1002085505

## Using the noise canceling function

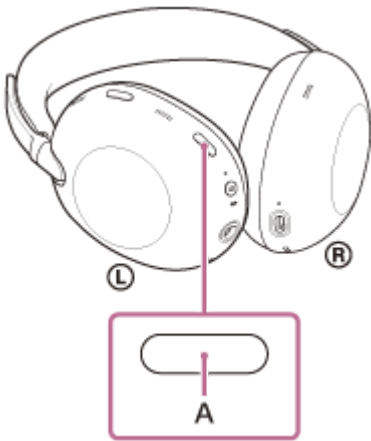
If you use the noise canceling function, you can enjoy music without being disturbed by ambient noise.

### 1 Turn on the headset.

You will hear a notification sound indicating that the headset is turned on.

When you are using the headset for the first time after purchase or just after initializing the headset, the noise canceling function is activated automatically when you turn on the headset. Any changes made to the settings are retained from this point on.

### 2 Press the noise canceling/Ambient Sound Mode button (A) to change the settings of the noise canceling function.



Each time the button is pressed, the function switches as follows.

Ambient Sound Mode is enabled and the noise canceling function is disabled.  
You will hear a notification sound.

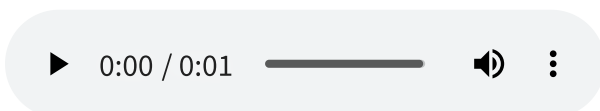


The noise canceling function is enabled and Ambient Sound Mode is disabled.  
You will hear a notification sound.

## Check the notification sound

It may not play on any browsers except the latest ones.

- When Ambient Sound Mode is enabled



- When the noise canceling function is enabled

## About the instruction manual video

Watch the video for how to use the noise canceling function. No audio explanation is available.

Models for countries and regions excluding Chinese mainland and Japan:

[https://rd1.sony.net/help/mdr/mov0107/h\\_zz/](https://rd1.sony.net/help/mdr/mov0107/h_zz/)

Models for Chinese mainland:

<https://rd1.sony.net/help/mdr/mov0107/zh-cn/>

Models for Japan:

<https://rd1.sony.net/help/mdr/mov0107/ja/>

### Hint

- If you connect the supplied headphone cable while using the noise canceling function with a Bluetooth connection, the Bluetooth function is turned off. You can continue to use the noise canceling function.
- You can also change the settings of the noise canceling function and Ambient Sound Mode with the “Sound Connect” app.
- You can select one of the following on the “Sound Connect” app to set how you want the functions to change when you press the noise canceling/Ambient Sound Mode button.
  - Noise canceling function enabled
  - Ambient Sound Mode enabled
  - Noise canceling function and Ambient Sound Mode disabled

---

### Related Topic

- [Using the “Sound Connect” app](#)
- [About the voice guidance](#)
- [Turning on the headset](#)
- [What is noise canceling?](#)
- [Listening to ambient sound during music playback \(Ambient Sound Mode\)](#)

TP1002085456

Wireless Noise Canceling Stereo Headset  
1000X THE COLLEXION

## Always automatically optimizing the noise canceling performance to suit the wearer and usage environment

---

Auto NC Optimizer automatically measures the headset's wearing condition and usage environment to constantly optimize noise canceling characteristics. Automatically provides the ideal noise canceling effect for the wearing condition and usage environment.

### Note

- Because the noise canceling performance is automatically optimized according to changes in the wearing condition and usage environment, you may notice fluctuations in the noise canceling effect.

TP1002271851

## Listening to ambient sound during music playback (Ambient Sound Mode)

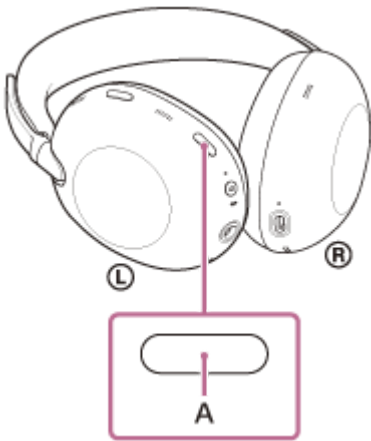
The microphones built into the left and right headset units make it easier to hear ambient sound. You can hear ambient sound while enjoying music.

### 1 Turn on the headset.

You will hear a notification sound indicating that the headset is turned on.

When you are using the headset for the first time after purchase or just after initializing the headset, the noise canceling function is activated automatically when you turn on the headset. Any changes made to the settings are retained from this point on.

### 2 Press the noise canceling/Ambient Sound Mode button (A) to switch to the Ambient Sound Mode.



Each time the button is pressed, the function switches as follows.

The noise canceling function is enabled and Ambient Sound Mode is disabled.  
You will hear a notification sound.

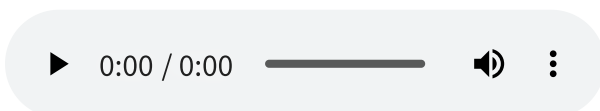


Ambient Sound Mode is enabled and the noise canceling function is disabled.  
You will hear a notification sound.

## Check the notification sound

It may not play on any browsers except the latest ones.

- When the noise canceling function is enabled



- When Ambient Sound Mode is enabled

## About the instruction manual video

Watch the video for how to use Ambient Sound Mode. No audio explanation is available.

Models for countries and regions excluding Chinese mainland and Japan:

[https://rd1.sony.net/help/mdr/mov0107/h\\_zz/](https://rd1.sony.net/help/mdr/mov0107/h_zz/)

Models for Chinese mainland:

<https://rd1.sony.net/help/mdr/mov0107/zh-cn/>

Models for Japan:

<https://rd1.sony.net/help/mdr/mov0107/ja/>

### Hint

- Ambient Sound Mode settings changed with the “Sound Connect” app are stored in the headset. You can enjoy music with the stored settings by enabling Ambient Sound Mode even when the headset is connected to other devices which do not have the “Sound Connect” app installed.
- You can select one of the following on the “Sound Connect” app to set how you want the functions to change when you press the noise canceling/Ambient Sound Mode button.
  - Noise canceling function enabled
  - Ambient Sound Mode enabled
  - Noise canceling function and Ambient Sound Mode disabled

### Note

- Depending on the ambient conditions and the type and volume of audio playback, ambient sounds may not be heard even when using Ambient Sound Mode. Do not use the headset in places where it would be dangerous if you are unable to hear ambient sounds, such as on a road with car and bicycle traffic.
- If the headset is not being worn properly on your ears, the Ambient Sound Mode may not work correctly. Wear the headset properly.
- Depending on the surrounding environment, wind noise may increase when Ambient Sound Mode is activated. In that case, lower the volume of Ambient Sound Mode using the “Sound Connect” app. If the wind noise is still significant, inactive Ambient Sound Mode.
- When Ambient Sound Mode is activated, if your fingers or hair touch the noise canceling function microphones, you may hear a loud sound.

---

### Related Topic

- [Using the “Sound Connect” app](#)
- [About the voice guidance](#)
- [Using the noise canceling function](#)

TP1002091898

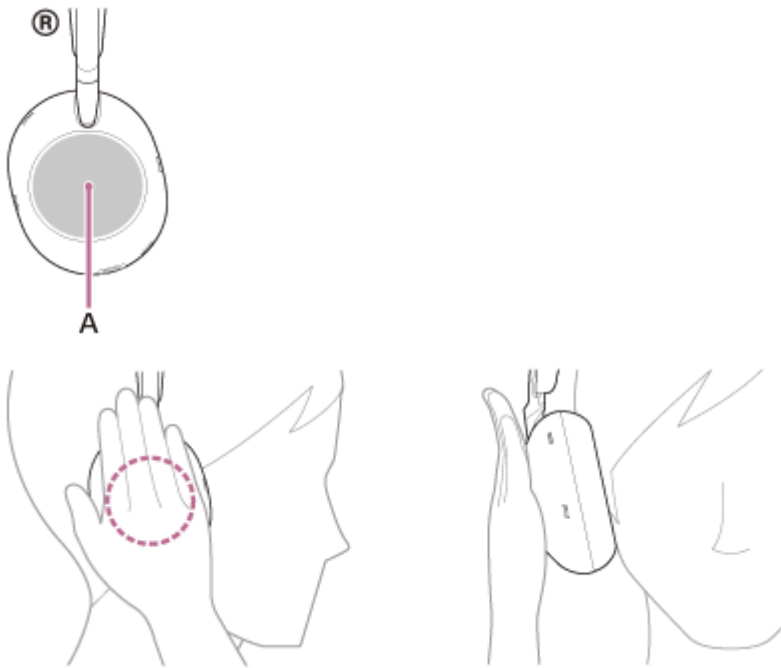
Wireless Noise Canceling Stereo Headset  
1000X THE COLLEXION

## Listening to ambient sound quickly (Quick Attention Mode)

This function turns down music, call sounds, and the ringtone to allow ambient sound to be easily heard. The Quick Attention Mode is useful for quickly listening to train announcements, etc.

### To activate the Quick Attention Mode

Touch the entire touch sensor control panel (A) of the headset. The Quick Attention Mode is activated only when you are touching the touch sensor control panel.



### To deactivate the Quick Attention Mode

Release your hand from the touch sensor control panel.

### About the instruction manual video

Watch the video for how to use the Quick Attention Mode. No audio explanation is available.

Models for countries and regions excluding Chinese mainland and Japan:

[https://rd1.sony.net/help/mdr/mov0108/h\\_zz/](https://rd1.sony.net/help/mdr/mov0108/h_zz/)

Models for Chinese mainland:

<https://rd1.sony.net/help/mdr/mov0108/zh-cn/>

Models for Japan:

<https://rd1.sony.net/help/mdr/mov0108/ja/>

#### Note

- If you touch as follows, the function may not work properly.
  - The whole touch sensor control panel is not covered.



– The touch sensor control panel is not touched.



- Depending on the ambient conditions and the type and volume of audio playback, ambient sounds may not be heard even when using the Quick Attention Mode. Do not use the headset in places where it would be dangerous if you are unable to hear ambient sounds, such as on a road with car and bicycle traffic.
- If the headset is not being worn properly, the Quick Attention Mode may not work correctly. Wear the headset properly.

TP1002085407

Wireless Noise Canceling Stereo Headset  
1000X THE COLLEXION

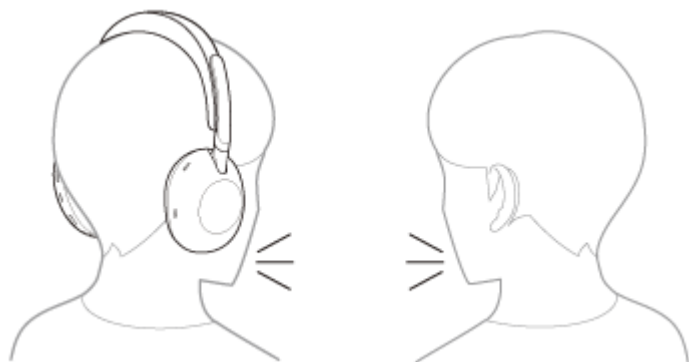
## Speaking with someone while wearing the headset (Speak-to-Chat)

Speak-to-Chat is a feature that makes it easier to hear the voice of your conversation partner while wearing the headset. Set up with the “Sound Connect” app.

While Speak-to-Chat mode is activated, the headset lowers the music volume and captures the voice of the other person through the microphone to make listening easier.

When the headset does not detect the wearer’s voice for a certain period of time, the Speak-to-Chat mode ends automatically.

If you want to end the mode before that, use the headset buttons or touch sensor control panel.



### To enable Speak-to-Chat

To activate the Speak-to-Chat mode, Speak-to-Chat must be enabled in advance.

In the factory settings, Speak-to-Chat is disabled. To enable, change the setting with the “Sound Connect” app.

### To disable Speak-to-Chat

To disable, change the setting with the “Sound Connect” app.

#### Hint

- You can also use the “Sound Connect” app to switch between enabled/disabled, change the sensitivity of the automatic audio detection, and change the time until the Speak-to-Chat mode ends. In the factory settings, the time until the mode ends is set to about 15 seconds.

#### Note

- The Speak-to-Chat mode activates when it detects the speech of the person wearing the headset. In rare cases, the mode may activate unintentionally in response to vibrations caused by actions such as brushing your teeth, coughing, or humming, or by devices such as electric toothbrushes, massagers, or shavers. In cases where Speak-to-Chat frequently activates by accident, set the Speak-to-Chat mode to “L Sensitivity”.
- Due to ambient noise, the speech of the person wearing the headset may not be detected, and the Speak-to-Chat mode may not activate. In this case, try speaking longer or louder. In some cases, the Speak-to-Chat mode may not activate even when speaking longer and with a louder voice in extremely noisy environments such as in an airplane.

#### Related Topic

- [Using the “Sound Connect” app](#)



Wireless Noise Canceling Stereo Headset  
1000X THE COLLEXION

## Receiving a call

You can talk on the phone hands-free via a Bluetooth connection on a smartphone that supports the following Bluetooth profiles.

- HFP : Hands-free Profile
- HSP : Headset Profile
- If your smartphone supports both HFP and HSP, set it to HFP.
- The operating procedure may vary depending on the smartphone. Refer to the operating instructions supplied with the smartphone.
- Depending on the connected device or the application, the functions may not work properly even if you try to operate them with the headset.

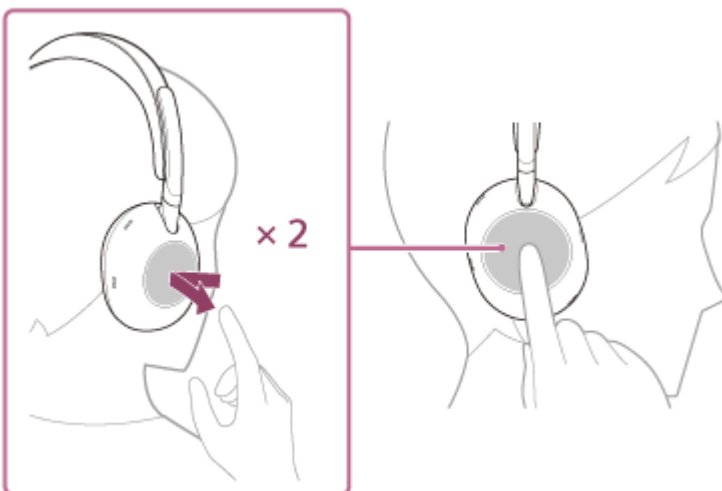
## Ring tone

When an incoming call arrives, a ring tone will be heard from the headset, and the indicator flashes quickly in blue. You will hear either of following ring tones, depending on your smartphone.

- Ring tone set on the headset
- Ring tone set on the smartphone
- Ring tone only for a Bluetooth connection set on the smartphone

- 1 **Connect the headset to a smartphone via a Bluetooth connection beforehand.**
- 2 **When you hear the ring tone, tap the touch sensor control panel twice quickly with an interval of about 0.4 seconds to receive the call.**

When you receive an incoming call during music playback, playback pauses and a ring tone will be heard from the headset.



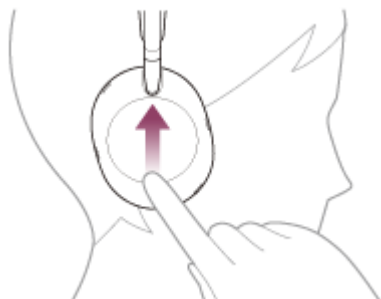
The headset has omnidirectional microphones. You can talk without worrying about the position of the microphone.

### If no ring tone is heard via the headset

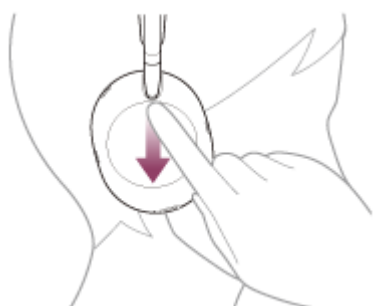
- The headset may not be connected with the smartphone over HFP or HSP. Check the connection status on the smartphone.
- If music playback does not pause automatically, operate the playback device to pause playback.

### 3 Adjust the volume using the touch sensor control panel.

- To increase the volume:  
Swipe up repeatedly until the volume reaches the desired level.



- To lower the volume:  
Swipe down repeatedly until the volume reaches the desired level.



- To change the volume continuously:  
Swipe up or down and hold. Release at the desired volume level.

When the volume reaches the maximum or minimum, an alarm sounds.

### 4 When you finish your phone call, tap the touch sensor control panel twice quickly with an interval of about 0.4 seconds to end the call.

If you received a call during music playback, music playback resumes automatically after ending the call.

#### Hint

- When receiving a call by using a smartphone, some smartphones may receive a call on the phone instead of the headset. Transfer the call to the headset on your smartphone.
- The volume for a call can be adjusted during a telephone conversation only.
- The headset volume during a call and during music playback can be independently adjusted. Even if you change the volume during a call, the volume of music playback does not change.

#### Note

- Depending on the connected device or playback application you are using, when you receive an incoming call during music playback, playback may not resume automatically even after you finish the call.
- Use a smartphone at least 50 cm (19.68 in) away from the headset. Noise may result if the smartphone is too close to the headset.
- In order to make it easier for you to hear your own voice during a phone call, the microphones work to capture ambient sounds (Sidetone function). If your voice is too loud or the sounds of your surroundings are bothering you, you can change the setting with the "Sound Connect" app. Turn off [Capture Voice During a Phone Call].

---

---

## Related Topic

- [How to make a wireless connection to Bluetooth devices](#)
- [Making a call](#)
- [Functions for a phone call](#)

TP1002085453

5-070-672-11(1) Copyright 2026 Sony Corporation

Wireless Noise Canceling Stereo Headset  
1000X THE COLLEXION

## Making a call

You can talk on the phone hands-free via a Bluetooth connection on a smartphone that supports the following Bluetooth profiles.

- HFP: Hands-free Profile
- HSP: Headset Profile
- If your smartphone supports both HFP and HSP, set it to HFP.
- The operating procedure may vary depending on the smartphone. Refer to the operating instructions supplied with the smartphone.
- Depending on the connected device or the application, the functions may not work properly even if you try to operate them with the headset.

### 1 Connect the headset to a smartphone via a Bluetooth connection.

### 2 Operate your smartphone to make a call.

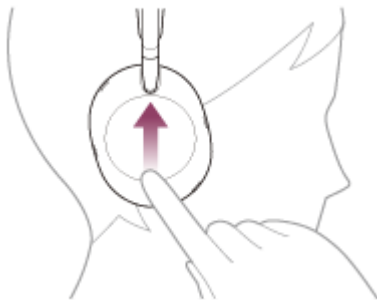
When you make a call, the dial tone is heard from the headset.

If you make a call during music playback, playback pauses.

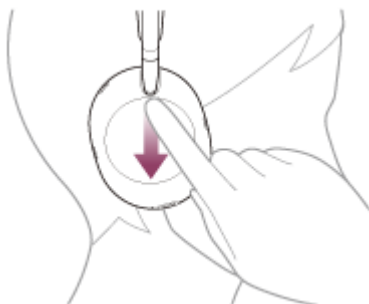
If no dial tone is heard via the headset, switch the call device to the headset using your smartphone.

### 3 Adjust the volume using the touch sensor control panel.

- To increase the volume:  
Swipe up repeatedly until the volume reaches the desired level.



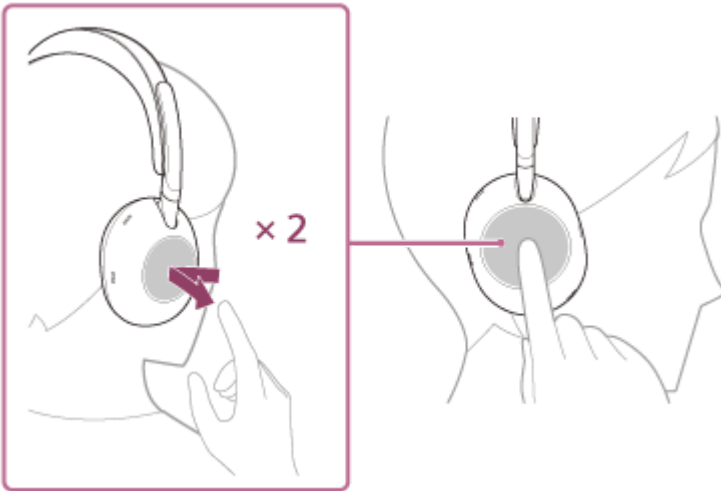
- To lower the volume:  
Swipe down repeatedly until the volume reaches the desired level.



- To change the volume continuously:  
Swipe up or down and hold. Release at the desired volume level.

When the volume reaches the maximum or minimum, an alarm sounds.

- 4 When you finish your phone call, tap the touch sensor control panel twice quickly with an interval of about 0.4 seconds to end the call.



If you made a call during music playback, music playback resumes automatically after ending the call.

#### Hint

- The volume for a call can be adjusted during a telephone conversation only.
- The headset volume during a call and during music playback can be independently adjusted. Even if you change the volume during a call, the volume of music playback does not change.

#### Note

- Depending on the connected device or playback application, when you make a call during music playback, playback may not resume automatically even after you finish the call.
- Use a smartphone at least 50 cm (19.68 in) away from the headset. Noise may result if the smartphone is too close to the headset.
- In order to make it easier for you to hear your own voice during a phone call, the microphones work to capture ambient sounds (Sidetone function). If your voice is too loud or the sounds of your surroundings are bothering you, you can change the setting with the “Sound Connect” app. Turn off [Capture Voice During a Phone Call].

#### Related Topic

- [How to make a wireless connection to Bluetooth devices](#)
- [Receiving a call](#)
- [Functions for a phone call](#)

TP1002085387

Wireless Noise Canceling Stereo Headset  
1000X THE COLLEXION

## Functions for a phone call

---

The functions available during a call may vary depending on the profile supported by your smartphone. In addition, even if the profile is the same, the available functions may vary depending on the smartphone.

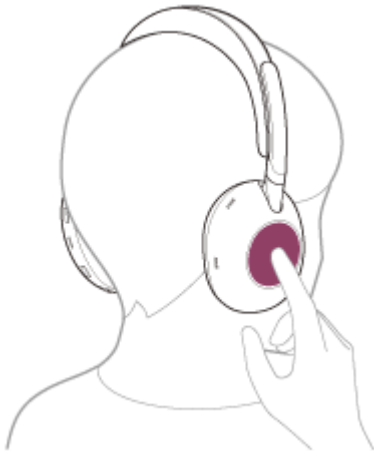
Depending on the connected device or the application you are using, the functions may not work properly even if you try to operate them with the touch sensor control panel.

Refer to the operating instructions supplied with the smartphone.

### When the supported profile is HFP (Hands-free Profile)

#### During standby/music playback

- Hold your finger to the touch sensor control panel to start up the voice dial function of the smartphone or activate the Google app on an Android smartphone or Siri on an iPhone.



#### Outgoing call

- Tap the touch sensor control panel twice quickly with an interval of about 0.4 seconds to cancel an outgoing call.

#### Incoming call

- Tap the touch sensor control panel twice quickly to answer a call.
- Hold your finger to the touch sensor control panel to reject a call.

When the head gesture setting is enabled on the “Sound Connect” app, you can perform the following operating procedures while wearing the headset.

- To receive a call:  
Nod your head.



- To reject a call:  
Shake your head.



### During call

- If you enable the microphone on/off setting during a call on the “Sound Connect” app, you can switch the microphone on/off by quickly pressing the noise canceling/Ambient Sound Mode button twice.
- Tap the touch sensor control panel twice quickly to finish a call.

## When the supported profile is HSP (Headset Profile)

### Outgoing call

- Tap the touch sensor control panel twice quickly to cancel an outgoing call.

### Incoming call

- Tap the touch sensor control panel twice quickly to answer a call.

### During call

- If you enable the microphone on/off setting during a call on the “Sound Connect” app, you can switch the microphone on/off by quickly pressing the noise canceling/Ambient Sound Mode button twice.
- Tap the touch sensor control panel twice quickly to finish a call.

#### Hint

- While the microphone is off, you will hear a notification sound every 7 seconds to indicate the off state. This notification sound can be turned on/off using the “Sound Connect” app.

#### Note

- When [Head Gesture] is enabled on the “Sound Connect” app, the functions may not work properly with the head gesture controls depending on the connected device or the application you are using.
- Depending on the video calling application you are using, it may not be possible to configure the microphone settings.
- The microphone on/off switching is linked only to the headset microphone. It does not work with the microphone settings of your smartphone or computer software.

---

---

**Related Topic**

- [Receiving a call](#)
- [Making a call](#)

TP1002085388

5-070-672-11(1) Copyright 2026 Sony Corporation

Wireless Noise Canceling Stereo Headset  
1000X THE COLLEXION

## Making a video call on your computer

When you make a video call on your computer, you can talk wirelessly from your headset.

- 1 **Connect the headset to your computer via a Bluetooth connection.**
- 2 **Launch the video calling application on your computer.**
- 3 **Check the settings (\*) of the video calling application.**
  - When you make a video call on your computer, select calling connections (HFP/HSP). If you select music playback connections (A2DP), a video call may not be available.
  - On the speaker settings, select calling connections [Headset (1000X THE COLLEXION Hands-Free)] (\*\*). ([Headphones (1000X THE COLLEXION Stereo)] (\*\*)) is for music playback connections.)
  - On the microphone settings, select calling connections [Headset (1000X THE COLLEXION Hands-Free)] (\*\*). When the microphone is not set up, the Speak-to-Chat mode activates when the headset detects the speech of the person wearing the headset, and the sound from the headset is muted.
  - Depending on the video calling application you are using, only [1000X THE COLLEXION] may be displayed. If this is the case, select [1000X THE COLLEXION].
  - As for frequently asked questions and answers, refer to the customer support website.

(\*) Depending on the video calling application you are using, this function may not be available.

(\*\*) Names may vary according to the computer or the video calling application you are using.

### Hint

- In the following cases, select [Headset (1000X THE COLLEXION Hands-Free)] on the settings of your computer to make connections. See "[Connecting to a paired computer \(Windows 11\)](#)" or "[Connecting to a paired computer \(Mac\)](#)".
  - When the video calling application settings cannot be confirmed
  - When you cannot select [Headset (1000X THE COLLEXION Hands-Free)]

### Note

- While Speak-to-Chat is enabled, if the microphone is not set up correctly, the Speak-to-Chat mode is activated when a voice is detected, and the sound from the headset may be muted.
- Depending on the video calling application you are using, it may not be possible to configure the microphone settings. If this is the case, use the "Sound Connect" app to disable Speak-to-Chat.
- Depending on the computer or application you are using, the headset may not work properly during a video call. This may be improved by restarting the computer.

### Related Topic

- [How to make a wireless connection to Bluetooth devices](#)
- [Pairing and connecting with a computer \(Windows® 11\)](#)
- [Pairing and connecting with a computer \(Mac\)](#)
- [Connecting to a paired computer \(Windows 11\)](#)

- Connecting to a paired computer (Mac)
- Disconnecting Bluetooth connection (after use)

TP1002091937

5-070-672-11(1) Copyright 2026 Sony Corporation

Wireless Noise Canceling Stereo Headset  
1000X THE COLLEXION

## Using Google™ Gemini

May not be supported in some countries and regions.

By linking with the Google Gemini feature on your smartphone, you can operate the smartphone by voice or perform a search while wearing the headset.

### 1 Launch the “Sound Connect” app and set the function of touch sensor control panel as the Digital assistant.

The first time you use Google Gemini, make sure that Google Gemini is set as the primary assistant on the connected smartphone.

### 2 Launch Google Gemini using the following methods.

- Say the wake word “Hey Google”
- Operate the touch sensor control panel



- Hold your finger to the touch sensor control panel to input a voice command, and release your finger to finish the voice command.

For details, refer to the following website.

<https://support.google.com/gemini/answer/15456140>

### Compatible smartphones

- Android 13 or later

For more information about Google Gemini, refer to the following.

- The operating instructions or support website for Android smartphones
- The Google Play Store website  
<https://support.google.com/gemini/>

### Hint

- Check or update the software version of the headset with the “Sound Connect” app.

- When Google Gemini is not available for reasons such as not being connected to the network, you will hear a voice guidance indicating unavailability from the headset. Notifications may be displayed on the screen of the connected device, but service specifications may change without notice due to changes made by service providers.
- It is possible not to assign the voice assistant to the touch sensor control panel.

### Note

- Google Gemini and the voice assist function (Google app) cannot be assigned to the headset at the same time.
- Google Gemini and the voice assist function (Siri) cannot be assigned to the headset at the same time.
- The function to operate the headset with Google Gemini depends on the specifications of Google Gemini.
- The specifications of Google Gemini are subject to change without notice.
- For details on the services provided by other companies such as Google Gemini, consult each service provider directly. Sony shall assume no responsibility for any problems such as misunderstandings related to the services provided by other companies.

TP1002087501

5-070-672-11(1) Copyright 2026 Sony Corporation

Wireless Noise Canceling Stereo Headset  
1000X THE COLLEXION

## Using Tencent Xiaowei

This feature is available for models designed for the Chinese mainland.

By using Tencent Xiaowei that comes with the smartphone, you can speak to the headset's microphone to operate the smartphone or perform a search.

### Compatible smartphones

- A smartphone with Android 6.0 or later, or iOS 10 or later installed.
- The latest version of the Tencent Xiaowei app is required.

**1** Launch the “Sound Connect” app and set the function of touch sensor control panel as the Tencent Xiaowei.

**2** Launch the Tencent Xiaowei app.

**3** Operate the touch sensor control panel to use the Tencent Xiaowei app.



- Hold your finger to the touch sensor control panel to input a voice command, and release your finger to finish the voice command.

For details on Tencent Xiaowei, refer to the following website.

<https://xiaowei.tencent.com/guide/index.html?cid=1465>

### Hint

- Check or update the software version of the headset with the “Sound Connect” app.

### Note

- Tencent Xiaowei and the voice assist function cannot be assigned to the headset at the same time.
- Tencent Xiaowei is only available in China.



Wireless Noise Canceling Stereo Headset  
1000X THE COLLEXION

## Using the voice assist function (Google app)

By linking with the Google app on your Android smartphone, you can operate the Android smartphone by voice while wearing the headset.

### 1 Set the assist and voice input selection to the Google app.

On the Android smartphone, select the following menus.

[Settings] - [Apps & notifications] - [Advanced] - [Default apps] - [Assist & voice input]

Then, set [Assist app] to the Google app.

The above operating procedure is an example. For more details, refer to the operating instructions supplied with the Android smartphone.

The latest version of the Google app may be required.

Models for countries and regions excluding Chinese mainland:

For details on the Google app, refer to the operating instructions or the support website of the Android smartphone, or the Google Play store website.

Models for Chinese mainland:

For details on the Google app, refer to the operating instructions or the support website of the Android smartphone.

The Google app may not be activated from the headset depending on specifications of the Android smartphone.

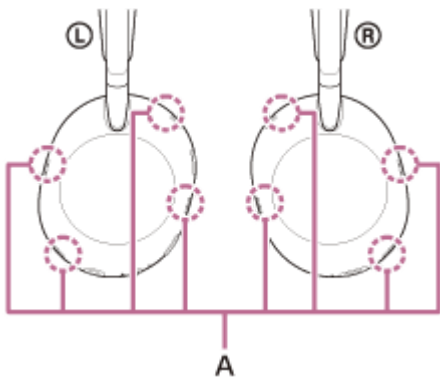
### 2 Connect the headset to the Android smartphone via Bluetooth connection.

### 3 When the Android smartphone is in standby or playing music, hold your finger to the headset's touch sensor control panel.



The Google app is activated.

### 4 Talk to Google through the app while wearing the headset on your ears.



There are microphones (A) on the left and right units of the headset.

For details on the apps which work with the Google app, refer to the operating instructions for the Android smartphone.

After launching the Google app, voice input will be disabled if no speech is recorded for a certain period of time.

### Note

- The voice assist function (Google app) and Google Gemini cannot be assigned to the headset at the same time.
- The voice assist function (Google app) and Tencent Xiaowei/QQ Music cannot be assigned to the headset at the same time.
- Even if "Hey Google" is enabled on your Android smartphone, you cannot use the "Hey Google" voice command to launch the Google app.
- In order to make it easier for you to hear your own voice while using the voice assist function, the microphones work to capture ambient sounds (Sidetone function). In this case, ambient sounds or the sounds of the headset operating procedure may be heard through the headset, but this is not a malfunction. If your voice is too loud or the sounds in your surroundings are bothering you, turn off [Capture Voice During a Phone Call] on the "Sound Connect" app.
- The Google app may not be activated depending on specifications of the smartphone or application version.
- The Google app does not work when connected to a device not compatible with the voice assist function.

TP1002085466

Wireless Noise Canceling Stereo Headset  
1000X THE COLLEXION

## Using the voice assist function (Siri)

By linking with Siri on your iPhone, you can operate the iPhone by voice while wearing the headset.

### 1 Activate Siri.

On an iPhone, select [Settings] - [Siri & Search].

Enable [Press Home for Siri] and [Allow Siri When Locked].

The above operating procedure is an example. For details, refer to the operating instructions supplied with the iPhone.

For details on Siri, refer to the operating instructions or support website of the iPhone.

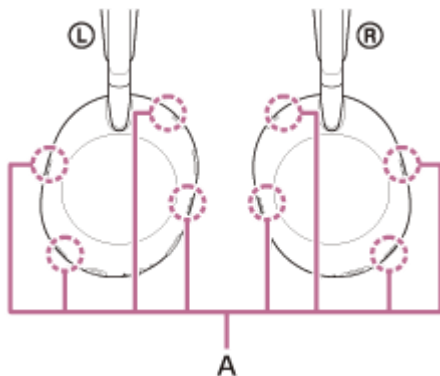
### 2 Connect the headset to the iPhone via Bluetooth connection.

### 3 When the iPhone is in standby or playing music, hold your finger to the headset's touch sensor control panel.



Siri is activated.

### 4 Talk to Siri through the app while wearing the headset on your ears.



There are microphones (A) on the left and right units of the headset.

For details on the apps which work with Siri, refer to the operating instructions for the iPhone.

After activating Siri, Siri will be deactivated if no voice input is detected for a certain period of time.

## Note

- The voice assist function (Siri) and Google Gemini cannot be assigned to the headset at the same time.
- The voice assist function (Siri) and Tencent Xiaowei/QQ Music cannot be assigned to the headset at the same time.
- Siri cannot be activated when you say “Hey Siri” even when the iPhone’s “Hey Siri” setting is enabled.
- In order to make it easier for you to hear your own voice while using the voice assist function, the microphones work to capture ambient sounds (Sidetone function). In this case, ambient sounds or the sounds of the headset operating procedure may be heard through the headset, but this is not a malfunction. If your voice is too loud or the sounds in your surroundings are bothering you, turn off [Capture Voice During a Phone Call] on the “Sound Connect” app.
- Siri may not be activated depending on specifications of the smartphone or application version.

TP1002085460

5-070-672-11(1) Copyright 2026 Sony Corporation

## Precautions

---

### On Bluetooth communications

- Bluetooth wireless technology is a short-range wireless technology that enables communication between digital devices, such as smartphones and computers. The maximum communication distance may vary depending on the presence of obstacles (people, metal objects, walls, etc.) or the electromagnetic environment.
- Depending on the Bluetooth device connected to the headset, the communication environment, and the surrounding conditions, noise or sound cut out may occur.
- The maximum communication distance of the headset is approximately 10 m (32.8 ft). The communication distance may vary depending on the surrounding environment.
- Microwaves emitting from a Bluetooth device may affect the operation of electronic medical devices. Turn off the headset and other Bluetooth devices in the following locations, as it may cause an accident:
  - in hospitals, near priority seating in trains, locations where inflammable gas is present, near automatic doors, or near fire alarms.
- When you use the headset on an airplane, follow flight crew directions. Radio waves may affect instruments, causing risk of accident due to malfunction.
- The audio playback on the headset may be delayed from that on the transmitting device, due to the characteristics of Bluetooth wireless technology. As a result, the sound may not be in sync with the image when viewing movies or playing games.
- The headset supports security functions that comply with the Bluetooth standard as a means of ensuring security during communication using Bluetooth wireless technology. However, depending on the configured settings and other factors, this security may not be sufficient. Be careful when communicating using Bluetooth wireless technology.
- Sony shall assume no responsibility for any damages or loss resulting from information leaks that occur when using Bluetooth communications.
- Bluetooth connections with all Bluetooth devices cannot be guaranteed.
  - Bluetooth devices connected with the headset must comply with the Bluetooth standard prescribed by Bluetooth SIG, Inc., and must be certified as compliant.
  - Even if a connected device complies with the Bluetooth standard described above, the connection may fail depending on the characteristics and specifications of the device. Additionally, differences in operation methods, display, or performance may occur.
  - When using the headset to perform hands-free talking on the phone, noise may occur depending on the connected device or the communication environment.
- Depending on the device to be connected, it may require some time to start communications.

### Note on temperature rise

- The temperature of the headset may rise while charging or when using the headset for a long period of time. This is not a malfunction.

### Note on static electricity

- If you use the headset when the air is dry, you may experience mild tingling in your ears. This is not a malfunction of the headset, but is caused by static electricity accumulated on your body. You can reduce the effect by wearing clothes made of natural materials that do not easily generate static electricity.

### Notes on wearing the headset

- After use, remove the headset from your ears slowly. The headset has a high degree of sealing. If the headset is pressed hard or suddenly removed from the ear, you may risk damaging your eardrum.
- When putting on the headset, noise may be generated from the diaphragm. This is not a malfunction.

- Long-term use of the headset may cause symptoms such as itching and irritation in the ears.  
If you experience any of the above symptoms while the headset is in use, stop using it immediately. Then, consult a doctor, the Sony support contact, or your nearest Sony dealer.

## **Other notes**

- The headset is a precision device, so do not drop it or subject it to strong shocks. This may cause deformation or damage, resulting in reduced performance.
- The touch sensor may not operate properly if you apply stickers or other adhesive items to the touch sensor control panel.
- Depending on the signal conditions of your smartphone or the surrounding environment, you may not be able to use the headset.
- The Bluetooth function may not work with a mobile phone, depending on the signal conditions and the surrounding environment.
- Do not breathe into the driver unit or microphone.
- Do not apply weight or pressure to the headset for long periods, including when it is stored, as it may cause deformation. When storing the headset, do not apply force.
- If you experience discomfort while using the headset, stop using it immediately.
- The earpads are consumables. If they deteriorate or become damaged due to long-term use or storage, consult the Sony support contact or your nearest Sony dealer.
- The headset is not waterproof. If water or foreign matter enters the headset, this can result in burnout or malfunction. If water or foreign matter enters the headset, stop use immediately. Then, consult the Sony support contact or your nearest Sony dealer. In particular, be careful in the following cases.
  - When using the headset near a sink or liquid container  
Be careful that the headset does not fall into a sink or container filled with water.
  - When using the headset in the rain or snow, or in humid locations
  - When using the headset while you are perspiring  
If you touch the headset with wet hands or if the headset come into contact with wet clothing, the headset may get wet.

## **Cleaning the headset**

- Occasionally clean the plug with a soft dry cloth.
- Dust and dirt on the exterior of the headset can be wiped off with pure water type wet wipes. Do not use the following items as they may damage the surface finish and lead to malfunction or breakage.
  - Wet wipes containing alcohol
  - Thinner
  - Benzine and other similar substances

## **Do not use the headset near medical devices**

- Radio waves can affect cardiac pacemakers and medical devices. Do not use the headset in crowded places such as crowded trains or inside a medical institution.
- The headset has magnets. These magnets may interfere with pacemakers, programmable shunt valves for hydrocephalus treatment, or other medical devices. Do not place the headset close to persons who use such medical devices. Consult your doctor before using the headset if you use any such medical devices.

## **Keep the headset away from magnetic cards**

- The headset has magnets. If a magnetic card comes near the headset, the card magnet may be affected or become deactivated.



## Supported codecs

A codec is an “audio coding algorithm” used when transmitting sound wirelessly via a Bluetooth connection.

The headset supports the following codecs.

When the headset is connected using Classic Audio A2DP for music playback, it supports SBC, AAC, and LDAC.

When the headset is connected using LE Audio, it supports LC3.

- **SBC**  
This is an abbreviation for Subband Codec.  
SBC is the standard audio coding technology used in Bluetooth devices.  
All Bluetooth devices support SBC.
- **AAC**  
This is an abbreviation for Advanced Audio Coding.  
AAC is mainly used in Apple products such as iPhone that can provide a higher sound quality than that of SBC.
- **LDAC**  
LDAC is an audio coding technology developed by Sony that enables the transmission of High-Resolution (Hi-Res) Audio content, even over a Bluetooth connection.  
Unlike other Bluetooth-compatible coding technologies such as SBC, it operates without any down-conversion of the High-Resolution Audio content (\*).  
It allows approximately 3 times more data (\*\*) than those other technologies to be transmitted over a Bluetooth wireless network with unprecedented sound quality, employing efficient coding and optimized packetization.
- **LC3**  
This is an abbreviation for Low Complexity Communication Codec.  
LC3 is a codec for LE Audio and achieves low latency transmission.

(\*) excluding DSD format contents.

(\*\*) in comparison with SBC when the bitrate of 990 kbps (96/48 kHz) or 909 kbps (88.2/44.1 kHz) is selected.

When music is transmitted using one of the following codecs from a device connected via Classic Audio, the headset automatically switches to that codec and plays back the music in the same format.

SBC, AAC, LDAC

When you want to play back music with LDAC, use the “Sound Connect” app and set [Bluetooth Connection Quality] to [Priority on Sound Quality]. In [High Reliability] and [Low latency], music cannot be played back with LDAC.

If the connected device supports a codec of higher sound quality than SBC, you may need to set the device beforehand to enjoy music with the desired codec from the supported codecs.

Refer to the operating instructions supplied with the device regarding setting the codec.

When connected to LE Audio, the music playback is performed in LC3 codec. For LE Audio connections, use the “Sound Connect” app and set [Bluetooth Connection Quality] to [Low latency]. The [High Reliability] or [Priority on Sound Quality] setting does not support LE Audio connection.

Refer to the operating instructions supplied with the device you are connecting to, as some settings may be necessary in advance.

Wireless Noise Canceling Stereo Headset  
1000X THE COLLEXION

## How to keep the software up-to-date (for comfortable use of the headset)

Update the headset software to enjoy new functions and resolve certain issues. Update the headset software using the “Sound Connect” app.

For details on the latest headset software and how to update the software, refer to the information on the support website.

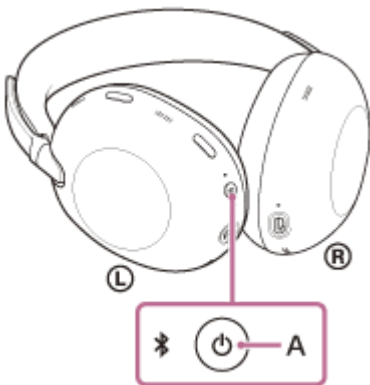
When the update automatically setting is enabled on the “Sound Connect” app and the following conditions are met, the software update starts automatically at around night time when the headset is not in use.

- The software has already transferred.
- The remaining battery charge of the headset is more than 20%.
- The headset is turned off.

You can also update the headset software in the following way.

### 1 Turn on the headset.

Press and hold the power button (A) for about 2 seconds or more.



### 2 Launch the “Sound Connect” app on a mobile device such as a smartphone.

### 3 Update the headset software following the on-screen instructions.

#### Note

- Before performing an update, disconnect any other Bluetooth devices connected to the mobile device being used for the update. Software may not be updated when the mobile device is connected with other devices compatible with Bluetooth Low Energy (such as wearable devices or smart watches).
- Note the following if the update cannot be completed.
  - Close all the apps installed on the mobile device except the “Sound Connect” app.
  - Fully charge the headset and the mobile device.
  - Put the headset and the mobile device being used for the update as close to each other as possible before starting the update.
  - Do not start the update if there are wireless LAN devices or other Bluetooth devices nearby.
  - Turn off the power saving mode (\*) of your mobile device before updating the software. Depending on the OS version of your mobile device, the update may not be completed under the power saving mode.

(\*) Names may vary according to the mobile device you are using.



Wireless Noise Canceling Stereo Headset  
1000X THE COLLEXION

## To prevent burning or malfunction due to getting wet

---

### On waterproof performance of the headset

The headset is not waterproof. If water or foreign matter enters the headset, this can result in burnout or malfunction.

Avoid situations such as the following and be careful not to expose the headset to moisture or dirt.

- Using the headset in the rain or snow.



- Touching the headset without drying wet hands after doing housework in the kitchen or washing hands in the washroom.



- Touching the headset with sweaty hands, or using the headset in situations where the headset may get soaked in sweat.

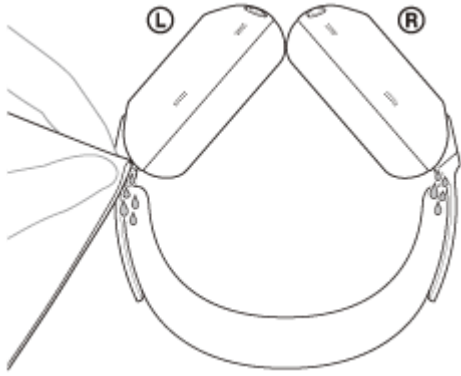


- Putting the headset in a bag with a cold PET bottle.



**If the headset gets wet, or water enters the headset**

If a wet headset is charged or turned on, this can result in burnout or malfunction. Turn the headset over with as little restraint as possible and apply a dry cloth to the headset until no more water comes out of the hole at the base of the slider section. After that, leave the headset in a shaded, well-ventilated place until it is completely dry.



TP1002093417

5-070-672-11(1) Copyright 2026 Sony Corporation

## Licenses

---

- This product contains software that Sony uses under a licensing agreement with the owner of its copyright. We are obligated to announce the contents of the agreement to customers under requirement by the owner of copyright for the software. Please access the following URL and read the contents of the license.  
<https://rd1.sony.net/help/mdr/sl/26/>
- Use of the Made for Apple badge means that an accessory has been designed to connect specifically to the Apple product(s) identified in the badge and has been certified by the developer to meet Apple performance standards. Apple is not responsible for the operation of this device or its compliance with safety and regulatory standards.
- Network services, content and the (operating system and) software of this product may be subject to individual terms and conditions and changed, interrupted or discontinued at any time and may require fees, registration and credit card information.

TP1002090545

## Trademarks

---

- Google, Android, Gemini and Google Play are trademarks of Google LLC.
- Apple, iPhone, macOS, Mac and Siri are trademarks of Apple Inc., registered in the U.S. and other countries and regions.
- App Store is a service mark of Apple Inc., registered in the U.S. and other countries and regions.
- IOS is a trademark or registered trademark of Cisco in the U.S. and other countries and is used under license.
- Microsoft and Windows are registered trademarks or trademarks of Microsoft Corporation in the United States and/or other countries.
- The BLUETOOTH® word mark and logos are registered trademarks owned by Bluetooth SIG, Inc. The Auracast™ word mark and logos are trademarks owned by Bluetooth SIG, Inc. Any use of such marks by Sony Group Corporation and its subsidiaries is under license.
- USB Type-C® and USB-C® are registered trademarks of USB Implementers Forum.
- LDAC and LDAC logo are trademarks of Sony Group Corporation or its affiliates.
- “DSEE” and “DSEE Ultimate” are trademarks or registered trademarks of Sony Group Corporation or its affiliates.
- All other trademarks and registered trademarks are trademarks or registered trademarks of their respective holders. In this manual, ™ and ® marks are not specified.

TP1002085390

Wireless Noise Canceling Stereo Headset  
1000X THE COLLEXION

## Troubleshooting

---

If you have any problems, please follow the process below.

**1. Turn the headset off, charge it, and then turn it on again.**



**2. Restart the device being connected such as your computer or smartphone.**



**3. Access the Sony support site from the menu of the “Sound Connect” app to search for the cause and solution of the issue, or check the support site below.**

<https://www.sony.net/support/WH-1000XX/>



**4. Reset the headset.**



**5. Initialize the headset.**



**6. Should any problems persist, consult the Sony support contact below or your nearest Sony dealer.**

<https://www.sony.net/support-contact>

---

### Related Topic

- [Charging](#)
- [Initializing the headset to restore factory settings](#)
- [Specifications](#)

TP1002271852

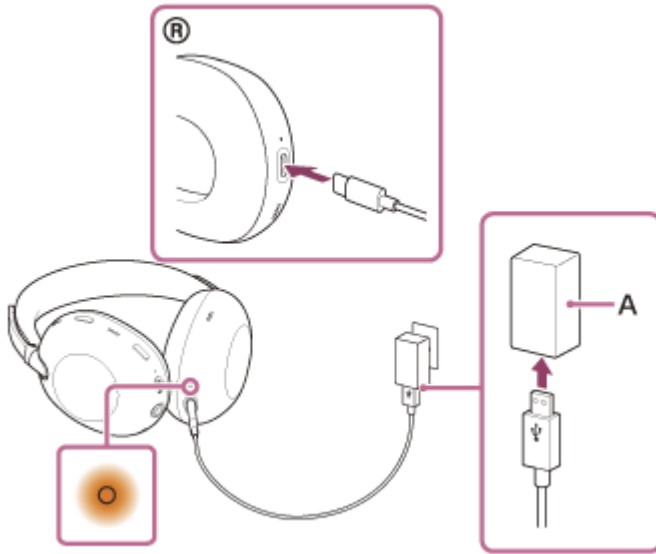
Wireless Noise Canceling Stereo Headset  
1000X THE COLLEXION

## Resetting the headset

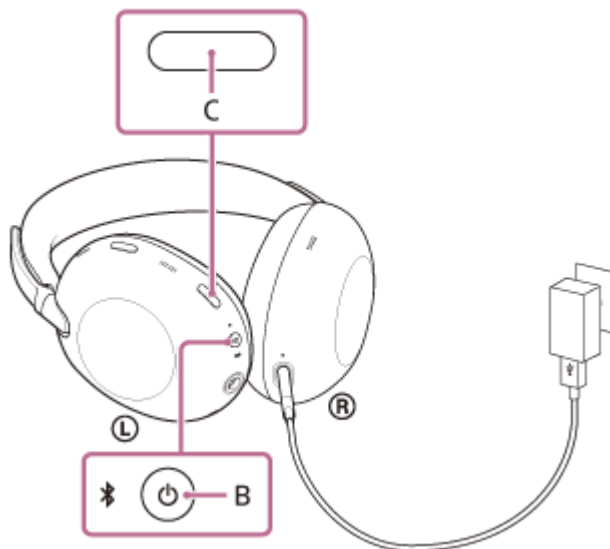
If the headset cannot be turned on or cannot be operated even when it is turned on, reset the headset.

### 1 Connect the headset to an AC outlet.

Use a USB Type-C cable and USB AC adaptor (A).



### 2 Press and hold the power button (B) and the noise canceling/Ambient Sound Mode button (C) for about 5 seconds.



The headset will be reset (the charging indicator turns off and then lights up again).

The pairing information and other settings are retained.

If the headset does not operate correctly even after resetting, initialize the headset to restore factory settings.

---

---

## Related Topic

- [Initializing the headset to restore factory settings](#)

TP1002091901

5-070-672-11(1) Copyright 2026 Sony Corporation

Wireless Noise Canceling Stereo Headset  
1000X THE COLLEXION

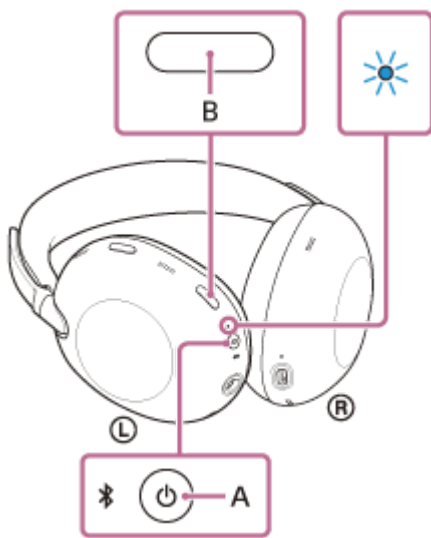
## Initializing the headset to restore factory settings

If the headset does not operate correctly even after resetting, initialize the headset.

### 1 Turn off the headset.

Remove the USB Type-C cable.

### 2 Press and hold the power button (A) and the noise canceling/Ambient Sound Mode button (B) for about 10 seconds.



When initializing is complete, the indicator flashes in blue 4 times.

This operating procedure resets the volume settings and other settings to the factory settings and deletes all pairing information. In this case, delete the pairing information for the headset from the connected device and then pair them again.

If the headset does not operate correctly even after initializing, consult your nearest Sony dealer.

### Related Topic

- [Resetting the headset](#)

TP1002091900

Wireless Noise Canceling Stereo Headset  
1000X THE COLLEXION

## Specifications

---

### Headset

**Power source:**

DC 5 V (Using a commercially available USB AC Adaptor)  
Using built-in lithium-ion batteries (Product Operation Power: DC 3.85 V)

**Charging time:**

Approx. 3.5 hours

**Note**

- Charging hours may be different depending on the conditions of use.

**Charging temperature:**

5 °C to 35 °C (41 °F to 95 °F)

**Operating temperature:**

0 °C to 40 °C (32 °F to 104 °F)

**Mass:**

Approx. 320 g (11.29 oz)

**Impedance:**

48 Ω (1 kHz) (when connecting via the headphone cable with the headset turned on)

**Sensitivity:**

103 dB/mW (when connecting via the headphone cable with the headset turned on)

**Frequency response:**

4 Hz - 40 000 Hz (IEC)<sup>(1)</sup>  
(when connecting via the headphone cable with the headset turned on)

### Communication specification

**Communication system:**

Bluetooth

(1) IEC = International Electrotechnical Commission

Design and specifications are subject to change without notice.

### Compatible iPhone models

iPhone 16 Pro Max  
iPhone 16 Pro  
iPhone 16 Plus

iPhone 16  
iPhone 15 Pro Max  
iPhone 15 Pro  
iPhone 15 Plus  
iPhone 15  
iPhone 14 Pro Max  
iPhone 14 Pro  
iPhone 14 Plus  
iPhone 14  
iPhone SE (3rd generation)  
iPhone 13 Pro Max  
iPhone 13 Pro  
iPhone 13  
iPhone 13 mini  
iPhone 12 Pro Max  
iPhone 12 Pro  
iPhone 12  
iPhone 12 mini  
iPhone SE (2nd generation)  
iPhone 11 Pro Max  
iPhone 11 Pro  
iPhone 11  
iPhone XS Max  
iPhone XS  
iPhone XR

(As of November 2025)

Depending on the iOS supported by the above models, the “Sound Connect” app may not be usable.

TP1002091899

5-070-672-11(1) Copyright 2026 Sony Corporation