

Wireless Stereo Headset  
LinkBuds Clip



Model: YY2999

## Quick Start Guide

 To prevent burning or malfunction due to getting wet

### Download the app, and set up the headset

Many useful features are out there in your device. Download the “Sound Connect” app and get the most out of what you have.

For the main features available with the “Sound Connect” app, see “Using the “Sound Connect” app”.



Sound Connect

### Let's start to use

1

#### Wearing the headset



Hold the headset so that the earcuff body (small) faces toward the ear canal side. Gently pull your earlobe and clamp the headset on the thin edge of your ear, similar to when putting on an ear cuff.

If the headset does not fit securely on your ear, attach the supplied fitting cushions.

2

## Establishing a BLUETOOTH® connection



The headset turns on when it is removed from the charging case.  
Follow the downloaded “Sound Connect” app instructions.

3

## Operating the headset



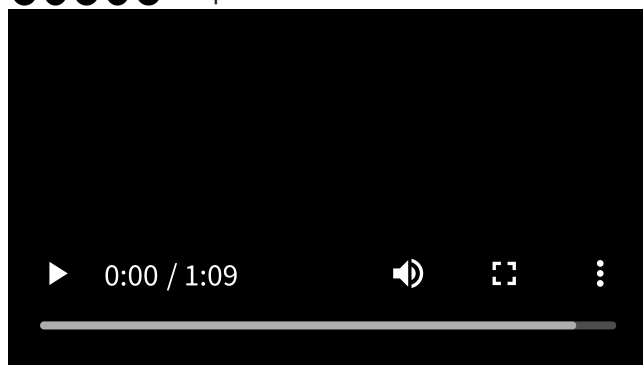
Tap the headset unit.

Left-side headset unit

- ● Tap twice: You can switch between the listening modes.
- ● ● Tap 3 times: You can use Quick Access (settings on the “Sound Connect” app are required).
- ● ● ● ● ...Tap 5 or more times: You can decrease the volume.

Right-side headset unit

- ● Tap twice: You can play or pause music.
- ● ● Tap 3 times: You can skip to the beginning of the next track.
- ● ● ● ● ...Tap 5 or more times: You can increase the volume.



[Operating the headset \(see the video for details\)](#)

## Related information

[Establishing a Bluetooth connection manually](#)

[Charging the headset](#)

WF-LC900

What you can do with the headset

[Using the headset](#)

[Using the “Sound Connect” app](#)

Getting started

[About the voice guidance](#)

Supplied accessories

[Included items](#)

[Attach the fitting cushions](#)

## Parts and controls

- [Location and function of parts](#)

- [About the indicator](#)

## Wearing the headset

- [Wearing the headset](#)

- [Using only one headset unit](#)

## Operating the headset

- [About tap controls](#)

## Power/Charging

- [Charging](#)

- [Available operating time](#)

- [Checking the remaining battery charge](#)

- [Turning on the headset](#)

- [Turning off the headset](#)

## Making connections

### [How to make a wireless connection to Bluetooth devices](#)

#### Easy setup with app

- [Connecting with the “Sound Connect” app](#)

#### Android smartphone

- [Pairing and connecting with an Android smartphone](#)

- [Connecting to a paired Android smartphone](#)

#### iPhone (iOS devices)

- [Pairing and connecting with an iPhone](#)

- [Connecting to a paired iPhone](#)

#### Computers

- [Pairing and connecting with a computer \(Windows® 11\)](#)

- [Pairing and connecting with a computer \(Mac\)](#)

- [Connecting to a paired computer \(Windows 11\)](#)

- [Connecting to a paired computer \(Mac\)](#)

## Other Bluetooth devices

- [Pairing and connecting with a Bluetooth device](#)

- [Connecting to a paired Bluetooth device](#)

## Multipoint connection

- [Connecting the headset to 2 devices simultaneously \(multipoint connection\)](#)

[Disconnecting Bluetooth connection \(after use\)](#)

## Listening to music

### Listening to music via a Bluetooth connection

- [Listening to music from a device via a Bluetooth connection](#)

- [Controlling the audio device \(Bluetooth connection\)](#)

- [Switching sound settings according to the content or usage scenario \(listening mode\)](#)

## Making phone calls

[Receiving a call](#)

[Making a call](#)

[Functions for a phone call](#)

[Making a video call on your computer](#)

## Using the voice assist function

[Using Google™ Gemini](#)

[Using Tencent Xiaowei](#)

[Using the voice assist function \(Google app\)](#)

[Using the voice assist function \(Siri\)](#)

## Important information

[Precautions](#)

[Supported codecs](#)

[How to keep the software up-to-date \(for comfortable use of the headset\)](#)

[When you have finished using the headset](#)

[Maintenance](#)

[To prevent burning or malfunction due to getting wet](#)

[When the headset units or charging case gets wet](#)

[Licenses](#)

[Trademarks](#)

Troubleshooting

[Troubleshooting](#)

[Resetting the headset](#)

[Initializing the headset to restore factory settings](#)

Specifications

[Specifications](#)

Wireless Stereo Headset  
LinkBuds Clip

## Using the headset

---

The following functions can be operated by tapping the headset.

For functions with detailed operating procedures described in the Help Guide, refer to the Related Topic at the bottom of the page.

### Bluetooth connection

You can connect to devices such as a smartphone or computer via Bluetooth.

### Playing music from a device via a Bluetooth connection

You can enjoy music wirelessly from Bluetooth-connected devices such as a smartphone or computer.



### Making calls via a Bluetooth-connected device

You can make wireless calls using Bluetooth-connected devices such as a smartphone or computer.



---

### Related Topic

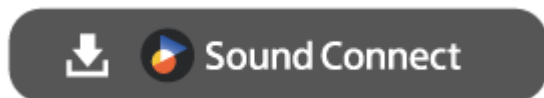
- [How to make a wireless connection to Bluetooth devices](#)
- [Connecting the headset to 2 devices simultaneously \(multipoint connection\)](#)
- [Listening to music from a device via a Bluetooth connection](#)
- [Controlling the audio device \(Bluetooth connection\)](#)

TP1002101641

Wireless Stereo Headset  
LinkBuds Clip

## Using the “Sound Connect” app

Install the “Sound Connect” app on your smartphone from the Google Play store or App Store.



### Service information linked with the features of the “Sound Connect” app

<https://www.sony.net/supported-servicelink>  
[sony.net/servicelink](https://www.sony.net/servicelink)

- The services that can be linked differ depending on the countries and regions.
- The specifications of the services that can be linked are subject to change, suspension or termination without notice.

The following functions can be operated and set using the “Sound Connect” app.

For functions with detailed operating procedures described in the Help Guide, refer to the Related Topic at the bottom of the page.

The following can be accessed from the [My Device] tab.

### Headset controls and status display

- Display the remaining battery life (headset and charging case)

### Listening mode

Sound settings can be switched based on the content or usage scenario.

### Equalizer

Set sound quality from presets. You can also set sound quality customized to your preferences.

### DSEE

It upscales compressed audio files to CD-quality sound for playback.

### 360 Reality Audio Setup

Set up the 360 Reality Audio.

### Bluetooth Connection Quality

You can set whether to prioritize sound quality or connection stability when the headset is connected via Bluetooth.

- [Prioritize Sound Quality]: Prioritizes the sound quality.
- [Prioritize Stable Connection]: Select this option when the connection is unstable, such as when frequent sound interruptions occur.

#### Note

- The playback time may shorten depending on the sound quality and the conditions under which you are using the headset.

- Depending on the ambient conditions in the area where you are using the headset, intermittent sound may still occur even if [Prioritize Stable Connection] is selected.

## **Change the tap operation function**

Change the function of the tap controls for both headset units.

## **Change Quick Access services**

Set the service to be assigned to Quick Access.

## **Notification & Voice Guide**

Set the language and volume for the voice guidance.

## **Update Software**

Set how to update the headset software.

## **Software version**

Display the headset software version.

The following can be accessed from the [Scene] tab.

## **Scene-based Listening**

It detects transitions in actions, such as when making calls or walking, and automatically plays music from a linked music service.

The following can be accessed from the [Discover] tab.

## **Listening History**

It records and displays usage history, such as headset activity and the songs you have listened to, allowing you to review your listening experience.

The following can be accessed from the [Menu] tab.

## **Help**

Display support information for the headset.

### **Note**

- The operating instructions and screen displays of the “Sound Connect” app are subject to change without prior notice due to future updates.

TP1002101642



## About the voice guidance

---

You will hear the following voice guidances depending on the operating procedure performed and the headset status. In the factory settings, you will hear a voice guidance in English, Chinese, or Japanese via the headset. You can use the “Sound Connect” app to change the following voice guidance settings.

- Language setting
- Volume setting

### “Pairing”

- When the headset enters pairing mode automatically:  
The headset enters pairing mode automatically in the following cases.
  - When you pair the headset with a device for the first time after purchasing the headset
  - When there is no pairing information, such as after initialization, and you use the headset units in your ears
- When you manually set the headset to pairing mode

### “Low battery”

- When the remaining battery charge of the headset is low

### “Battery is empty”

- When automatically turning off due to low battery of the headset

### “Voice guidance test”

- When setting the voice guidance volume

### “The Digital assistant is not connected” (\*)

- When Digital assistant is not available on the smartphone connected to the headset even when operating the headset unit to which Digital assistant is assigned

### “The Xiaowei is not connected” (\*)

- When Tencent Xiaowei is not available on the smartphone connected to the headset even when operating the headset unit to which Tencent Xiaowei is assigned

### “Launch the Sound Connect to activate the Service Link.”

- When Service Link is inactive and you try to use Quick Access

### “App assigned to the Quick Access is not launched on the mobile device”

- When you use Quick Access while the app is not launched

### “Standard”

- When standard is selected in the listening mode settings

## “Voice boost”

- When voice boost is selected in the listening mode settings

## “Sound Leakage Reduction”

- When sound leakage reduction is selected in the listening mode settings

(\*) May not be supported in some countries and regions.

### Note

- Changing the language of the voice guidance takes up to 10 minutes.
- The voice guidance language will not change even if you initialize the headset.
- If the voice guidance is not heard, set the headset units into the charging case. Close the charging case lid to turn off the headset units. Then, remove the headset units from the charging case to turn them on again.

TP1002090576

5-071-247-11(1) Copyright 2026 Sony Corporation

Wireless Stereo Headset  
LinkBuds Clip

## Included items

---

After opening the package, check that all of the items in the list are included. If any items are missing, consult the Sony support contact or your nearest Sony dealer.

Numbers in parentheses indicate the number of items.

### **Wireless Stereo Headset (1)**

### **Air Fitting Cushions for LinkBuds Clip (2)**



### **Charging case (1)**



### **Documents (1 set)**

#### **Note**

- There is a risk of small parts being swallowed. After use, keep out of reach of children.

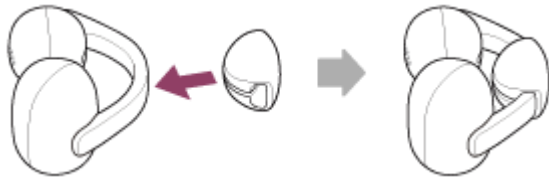
TP1002090574

## Attach the fitting cushions

If the headset does not stay securely on your ear, attach the supplied fitting cushions to the flexible clip of the headset.

### 1 Attach the fitting cushions to the flexible clip of the headset.

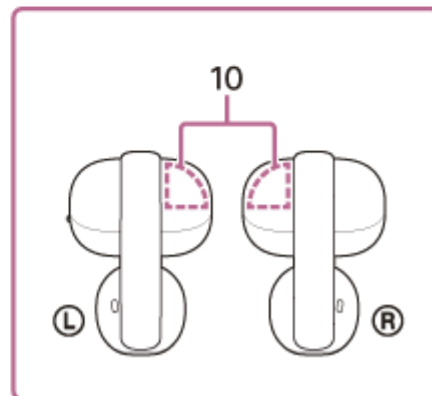
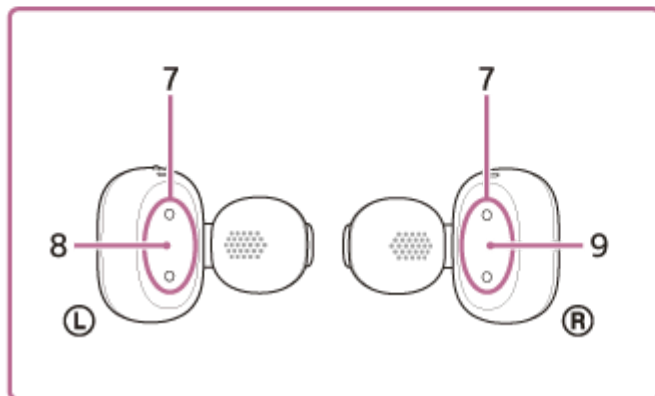
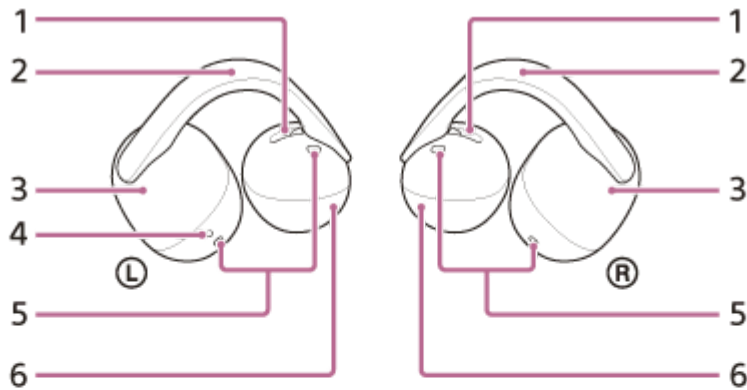
Attach the fitting cushions to your preferred position on the flexible clip.



TP1002101643

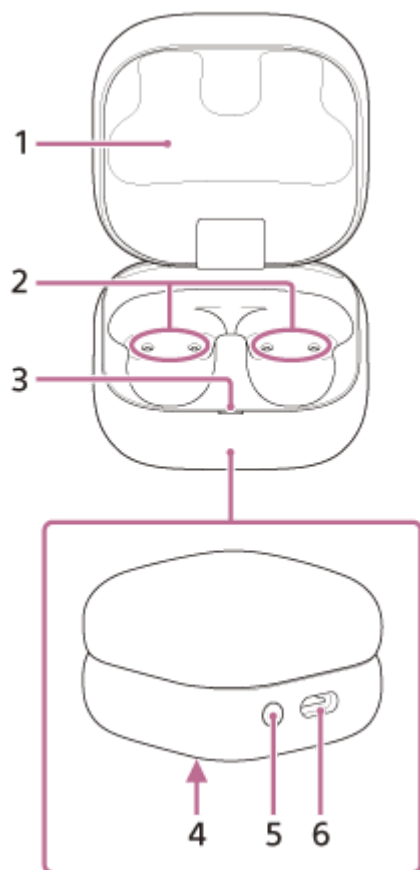
## Location and function of parts

### Headset



1. Air holes (left, right)
2. Flexible clip (left, right)
3. Earcuff body (large) (left, right)
4. Tactile dot  
There is a tactile dot on the left-side headset unit.
5. Microphones (left, right)
6. Earcuff body (small) (left, right)
7. Charging ports (left, right)
8. Ⓛ (left) mark
9. Ⓡ (right) mark
10. Built-in antennas (left, right)  
A Bluetooth antenna is built into both left and right units of the headset.

## Charging case



1. Charging case lid

2. Charging ports (left, right)

3. Indicator (green/orange/blue)

Indicates the remaining battery charge of the headset units and charging case, the charging status, or the status of the pairing mode.

4. Serial number

Located on the bottom of the charging case.

5. Pairing/reset/initialize button

Used when entering pairing mode, resetting or initializing the headset.

6. USB Type-C® port

Charge both the headset and the charging case using one of the following methods with a commercially available USB Type-C cable.

- Connect the charging case to a computer
- Connect the charging case to an AC outlet using a commercially available USB AC adaptor

---

### Related Topic

- [About the indicator](#)
- [Checking the remaining battery charge](#)

TP1002090567

## About the indicator

You can check various statuses of the headset/charging case by the indicator on the charging case.

- : Turns on in green
- : Turns on in orange
- : Turns on in blue
- : Turns off

### Indication of the remaining battery charge

When both headset units are stored in the charging case, the indicator displays the battery level of the headset unit that has the lower remaining battery charge between the left and right units.

When either the left or right headset unit is stored in the charging case, the indicator displays the remaining battery charge of the headset unit stored in the charging case.

When both headset units are removed from the charging case, the indicator displays the remaining battery charge of the charging case.

The remaining battery charge is displayed during the following actions. The remaining battery charge can be checked through the displayed information.

- When the charging case lid is opened
- When the charging case lid is closed
- When charging is complete and USB Type-C cable is disconnected
- When you remove the headset from the charging case
- When you set the headset units into the charging case

### The indicator lights up in green for about 6 seconds.



- When the headset is stored in the charging case and the remaining battery charge of the headset is 95% or higher
- When the headset is not stored in the charging case and the remaining battery charge of the charging case is 31% or higher

### The indicator lights up in orange for about 6 seconds.



- When the headset is stored in the charging case and the remaining battery charge of the headset is between 94% and 1%

### The indicator repeatedly flashes slowly in orange 3 times.



- When the headset is not stored in the charging case and the remaining battery charge of the charging case is between 30% and 1%

### The indicator turns off.



- When the headset is stored in the charging case and the remaining battery charge of the headset is less than 1%
- When the headset is not stored in the charging case and the remaining battery charge of the charging case is less than 1%

## Charging status

### The indicator lights up in orange.



- When charging the headset
- When charging the charging case

### The indicator lights up in orange for about 1 minute, and then turns off.



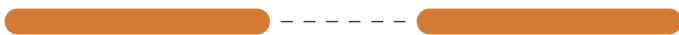
- When the battery is fully charged when charging starts on the headset units/charging case

### The indicator turns off.



- When the battery becomes fully charged and charging is complete

### The indicator lights up in orange while charging. The indicator turns off for about 0.5 seconds, and then lights up in orange again.



- During charging, when the charging case lid is opened or closed
- When the headset is set to or removed from the charging case

### The indicator repeatedly flashes twice in orange at an interval of about 1 second.



- When the charging temperature is abnormal

### The indicator repeatedly flashes slowly in orange at an interval of about 0.5 seconds.



- When an error occurs while charging and charging cannot be performed

### The indicator repeatedly flashes 3 times in orange at an interval of about 1.3 seconds.



- When the left and right headset units are paired incorrectly

## Bluetooth connection status

### The indicator repeatedly flashes twice in blue.



- When in pairing mode

### The indicator flashes 10 times in blue.





- When the connection process is completed:  
It indicates when one or both headset units are stored in the charging case.

## Other

**The indicator repeatedly flashes in orange for up to about 5 seconds at an interval of about 0.7 seconds.**



- When the headset is ready to begin the reset process
- When the headset is ready to begin the initialization process

For details, see [“Resetting the headset”](#) or [“Initializing the headset to restore factory settings”](#).

**The indicator flashes 4 times in green at an interval of about 0.3 seconds.**



- When the initialization process is completed

For details, see [“Initializing the headset to restore factory settings”](#).

---

### Related Topic

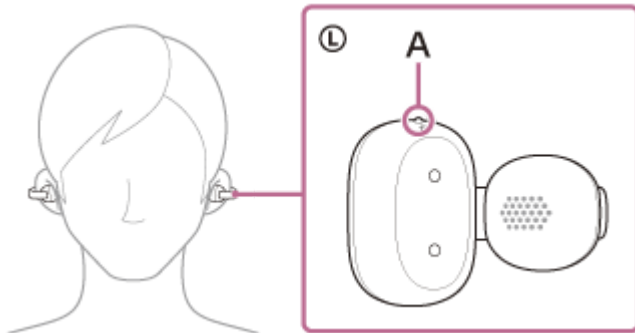
- [Charging](#)
- [Checking the remaining battery charge](#)
- [How to keep the software up-to-date \(for comfortable use of the headset\)](#)
- [Resetting the headset](#)
- [Initializing the headset to restore factory settings](#)

TP1002090566

## Wearing the headset

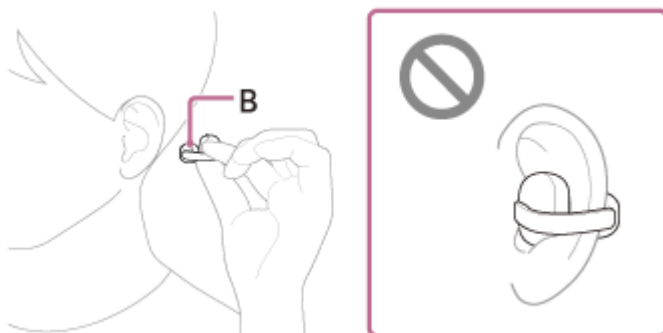
### 1 Check the L-mark and the R-mark on the headset units.

The one with the L-mark is for the left ear and the one with the R-mark is for the right ear. There is a tactile dot (A) on the left headset unit.



### 2 Pinch the headset with your fingers.

Hold the headset so that the earcuff body (small) (B) faces toward the ear canal side.

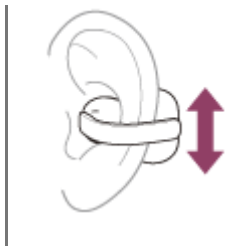


### 3 Clamp the headset to the outside of your ear to put it on.

Gently pull your earlobe and clamp the headset on the thin edge of your ear, similar to when putting on an ear cuff.



### 4 Adjust the headset to your preferred position.



If the headset does not stay securely on your ear, attach the supplied fitting cushions to the flexible clip of the headset.

### **The effects of headset position on sound quality, volume, call sound quality**

The position of the headset affects sound quality, volume, and call quality. If the headset is not positioned correctly, you may feel that the sound quality is not optimal, or there may be a difference in volume between both headset units.

If any of this applies, see step 4 and adjust the headset to a position where sound quality is optimal and the volume is balanced between both headset units.

Attaching and detaching the supplied fitting cushions may help improve the fit of the headset.

### **About the instruction manual video**

Watch the video to find out how to put the headset on your ears. No audio explanation is available.

Models for countries and regions excluding Chinese mainland and Japan:

[https://rd1.sony.net/help/mdr/mov0100/h\\_zz/](https://rd1.sony.net/help/mdr/mov0100/h_zz/)

Models for Chinese mainland:

<https://rd1.sony.net/help/mdr/mov0100/zh-cn/>

Models for Japan:

<https://rd1.sony.net/help/mdr/mov0100/ja/>

#### **Hint**

- You can play music as well as make and receive calls even when you are wearing only one headset unit in your ear.

---

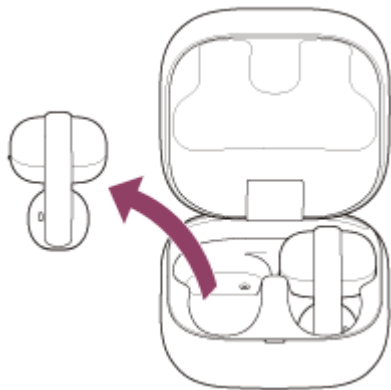
#### **Related Topic**

- [Using the “Sound Connect” app](#)
- [Attach the fitting cushions](#)
- [Using only one headset unit](#)

TP1002086716

## Using only one headset unit

You can remove one headset unit from the charging case and use the headset unit by itself.  
In this case, only the headset unit that has been removed from the charging case will turn on.



### When you remove the other headset unit from the charging case

The connection is automatically established between the left and right headset units, and you will hear the music or other audio on both headset units.

### Assigning functions to the left and right headset units

Depending on the headset unit you are wearing, some functions may not be available in the factory settings. In this case, you can change the function assignments to the left and right units of the headset using the “Sound Connect” app.

#### Hint

- In the factory settings, the music playback function is assigned to the right-side headset unit.  
If you are using only the right-side headset unit, you can play music by tapping it.  
If you are using only the left-side headset unit, operate the connected device to play music.
- When you listen with only one headset unit, you will hear a monaural sound with the left and right channels mixed.
- You can also enjoy hands-free calls even when you are using only one headset unit. When you receive an incoming call, answer the call with the headset unit you are using. If you remove the other headset unit from the charging case while you are talking with only one headset unit, you can talk with both headset units.
- Digital assistant can be assigned to either the left or right headset unit. When Digital assistant is assigned to the headset and you are using only one headset unit, use the headset unit with Digital assistant assigned.
- Tencent Xiaowei/QQ Music can be assigned to either the left or right headset unit. When you are using only one headset unit, use the headset unit with Tencent Xiaowei/QQ Music assigned.

#### Note

- When you are using only one headset unit, be sure to set the other headset unit into the charging case.
- When you are using only one headset unit, the remaining battery charge of the headset may be different on the left and right units.

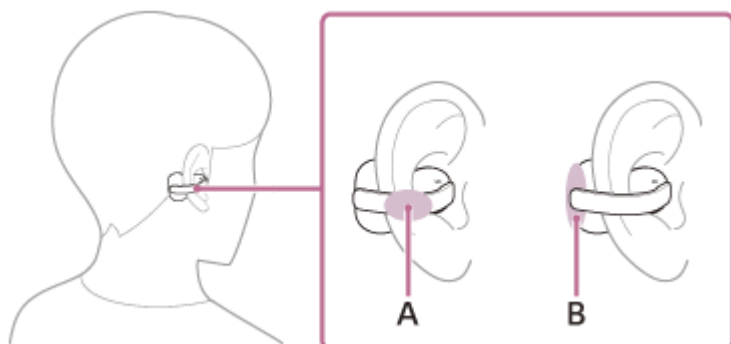
- Using the “Sound Connect” app
- Controlling the audio device (Bluetooth connection)
- Functions for a phone call

TP1002090555

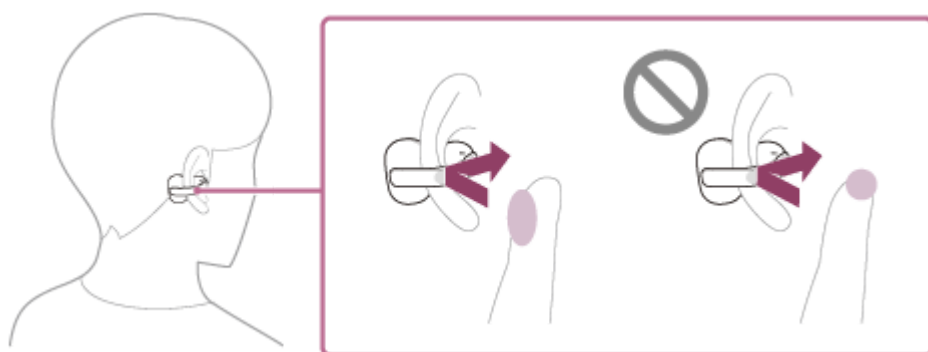
5-071-247-11(1) Copyright 2026 Sony Corporation

## About tap controls

Tap the flexible clip (A) or the earcuff body (large) (B) to control features such as music playback, phone calls, or changing the setting of the listening mode.



To tap the headset, use the pad of your index finger.



## Main actions

	Left	Right
Tap twice	To switch between the listening modes	To play or pause music
Tap 3 times	To receive or end a call To use Quick Access (settings on the “Sound Connect” app are required)	To receive or end a call To skip to the beginning of the next track
Tap 5 or more times	To lower the volume	To increase the volume

### Hint

- If the headset does not respond to tapping, check the following.
  - Ensure that you are tapping firmly  
Light touches may not be recognized.
  - Check whether the tapping intervals are too long or too short  
When you tap the headset multiple times, tap it quickly with an interval of about 0.2 seconds between taps.
  - Check that the tapping strength, location, and direction are consistent

- Make sure that you are not touching the headset or your ear before or after performing the tapping action
- If the headset does not respond, wait for more than one second before trying to tap again
- You can change the function assignments to the left and right headset units using the “Sound Connect” app.
- When you make initial settings for Google Gemini on your smartphone, the function assignments for tapping actions may change automatically.  
Check the function assignments to the headset with the “Sound Connect” app.
- When you make initial settings for Tencent Xiaowei on your smartphone, the function assignments to the headset may change automatically.  
Check the function assignments to the headset with the “Sound Connect” app.

TP1002101644

5-071-247-11(1) Copyright 2026 Sony Corporation

## Charging

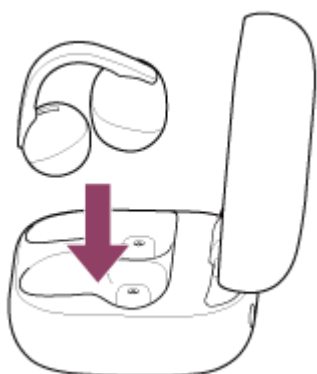
The headset and the charging case contain built-in lithium-ion rechargeable batteries. Use a commercially available USB Type-C cable to charge the headset before use.

### 1 Set the headset units into the charging case.

Put the left-side headset unit back into the left hole of the charging case. Put the right-side headset unit back into the right hole of the charging case. There is a tactile dot on the left-side headset unit.

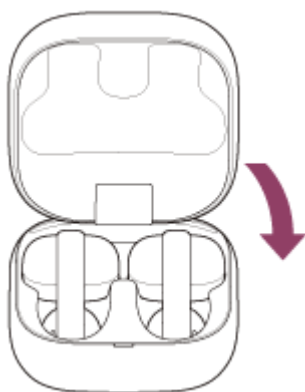
When putting the headset back into the charging case, insert the earcuff body (small) first.

Each headset unit will be set to the correct position in the charging case by the built-in magnet.



When the rechargeable battery of the charging case still has power, the indicator on the charging case lights up in orange or green for about 6 seconds.

The charging starts on the headset. Close the charging case lid.



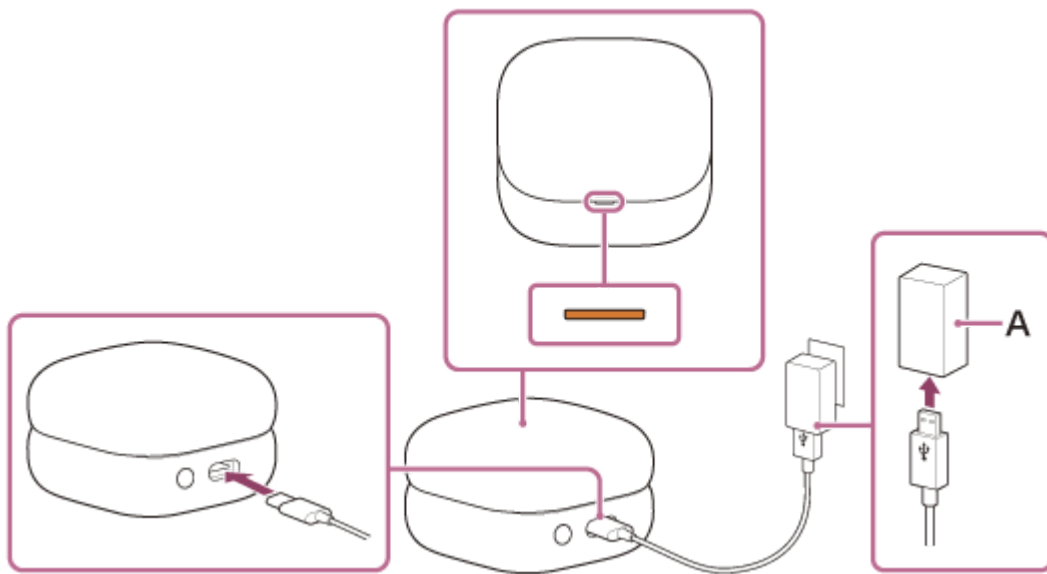
If the headset units are not properly connected to the charging case, they may not charge.

Make sure the headset is stored securely in the charging case.

### 2 Connect the charging case to an AC outlet.

Use a commercially available USB Type-C cable and a commercially available USB AC adaptor (A).





Charging starts on the headset and charging case. The indicator on the charging case lights up in orange. After charging is complete, the indicator on the charging case turns off. Remove the USB Type-C cable.

## About the charging time

The required time for fully charging the headset and the charging case is about 3 hours (\*).

(\*) Time required for charging the empty battery to its full capacity. The charging time may differ depending on the conditions of use.

## Charging the headset when you are outside

A rechargeable battery is built into the charging case. If you charge the charging case in advance, you can use it to charge the headset when you go out without a power supply.

The required time for fully charging the left and right headset units is about 1.5 hours.

## System requirements for battery charge using USB

- **USB AC adaptor**

A commercially available USB AC adaptor capable of supplying an output current of 0.5 A (500 mA) or more

- **USB cable**

Commercially available USB Type-C cable (compliant with USB standards)

- **Computer**

The computer should be equipped with a USB port as standard.

- We do not guarantee that the operating procedures will work on all computers.
- The operating procedures on a self-made computer are not guaranteed.

### Hint

- The headset can be also charged by connecting the charging case to a running computer using a commercially available USB Type-C cable.

### Note

- If a USB Type-C cable is supplied, be sure to use it.
- When charging is complete, remove the USB Type-C cable.
- Charging may not be successful depending on the type of USB AC adaptor.

- The headset cannot be charged when the computer goes into standby (sleep) or hibernation mode. In this case, start charging once again after changing the computer settings.
- When the left and right headset units are removed from the charging case, check the status of the indicator on the charging case. If the indicator on the charging case flashes slowly in orange 3 times, the remaining battery charge of the charging case is low. Charge the charging case.
- If the indicator on the charging case does not turn on even when the left and right headset units are removed from the charging case, the battery charge of the charging case is empty. Charge the charging case.
- If the headset is not used for a long time, the rechargeable battery usage hours may be reduced. However, the battery hours will improve after several charge and discharge cycles. If you store the headset for a long time, charge the battery once every 6 months to avoid over-discharge.
- If the headset is not used for a long time, it may take longer to charge the battery.
- While charging, be sure to keep the charging case lid closed to prevent the battery of the charging case from being wasted.
- If there is a problem with the rechargeable battery of the headset or the charging case during charging, the indicator on the charging case flashes in orange.  
It is recommended to charge in a place with an ambient temperature between 5 °C to 35 °C (41 °F to 95 °F). Efficient charging may not be possible beyond this range.  
If the problem persists, consult the Sony support contact or your nearest Sony dealer.
- If the headset is not used for a long time, the indicator on the charging case may not immediately light up in orange when charging. Wait a moment until the indicator lights up in orange.
- If the usage hours of the built-in rechargeable battery decrease significantly, the battery should be replaced. Consult the Sony support contact or your nearest Sony dealer.
- Avoid exposure to extreme temperature changes, direct sunlight, moisture, sand, dust, and electrical shock. Never leave the headset in a parked vehicle.
- When connecting the headset to a computer, make sure to connect it directly to the computer with a USB Type-C cable. Charging will not be properly completed when the headset is connected through a USB hub.
- If you shake the charging case forcefully, you will hear a rattling sound. This sound is caused by the headset units moving inside the charging case and is not a malfunction.
- The headset and the charging case may become warm during charging or for a while after charging. However, this is not a malfunction.

---

## Related Topic

- [About the indicator](#)
- [Checking the remaining battery charge](#)

TP1002090573

Wireless Stereo Headset  
LinkBuds Clip

## Available operating time

---

The available operating times of the fully charged headset are as follows.

### Bluetooth connection

**Music playback time (AAC):** Maximum 9 hours

**Music playback time (SBC):** Maximum 8 hours

- About 60 minutes of music playback is possible after 3 minutes charging.
- If you make the following settings on the “Sound Connect” app, the available operating time of the battery becomes shorter than the ones described above.
  - Equalizer
  - DSEE™
  - Service Link

If you run the above settings at the same time, the available operating time of the battery becomes even shorter.

### Communication time

**Communication time:** Maximum 4 hours

### Standby time

**Standby time:** Maximum 15 hours

#### Hint

- By using the “Sound Connect” app, you can check which codec is used for a connection.

#### Note

- Usage hours may be different from the time described above depending on the settings for the headset functions and usage conditions.
- While charging, be sure to keep the charging case lid closed to prevent the battery of the charging case from being wasted.

---

### Related Topic

- [Using the “Sound Connect” app](#)
- [Supported codecs](#)

TP1002090572

## Checking the remaining battery charge

You can check the remaining battery charge of the rechargeable batteries in the headset and charging case.

### Checking the remaining battery charge of the headset

#### Check using the voice guidance notification

When the rechargeable battery becomes low, the voice guidance will play in the following cases.

- When you remove the headset from the charging case
- When using the headset

When the battery becomes completely empty, an alarm sounds. The voice guidance plays, then the headset automatically turns off.

#### Check on your smartphone

- When you are using an iPhone (iOS 13 or later)  
When the headset is connected to an iPhone via an HFP (Hands-free Profile) Bluetooth connection, you can check the remaining battery charge of the headset on an iPhone. For details, refer to the operating instructions supplied with the iPhone.  
The remaining charge which is displayed may differ from the actual remaining charge in some cases. This is a rough estimate.
- When you are using an Android™ smartphone (OS 8.1 or later)  
When the headset is connected to an Android smartphone via an HFP Bluetooth connection, you can check the remaining battery charge of the headset on the smartphone. For more details, refer to the operating instructions supplied with the Android smartphone.  
The remaining charge which is displayed may differ from the actual remaining charge in some cases. This is a rough estimate.

### Checking the remaining battery charge of the charging case

When both headset units are removed from the charging case, or when the charging case lid is opened or closed with no headset units stored, you can check the remaining battery charge of the charging case.

- The indicator on the charging case repeatedly flashes slowly in orange 3 times.  
The remaining battery charge of the charging case is about 30% to 1%. The headset cannot be charged sufficiently with the charging case in this case.
- The indicator on the charging case does not light up.  
The remaining battery charge of the charging case is less than 1%. The headset cannot be charged with the charging case in this case.

#### Hint

- The remaining battery charge of the headset may be different on the left and right sides depending on how you use them. The remaining battery charge displayed on the smartphone is as follows.
  - When using both headset units, the remaining battery charge of the unit with less battery charge is displayed.
  - When using only one headset unit, the remaining battery charge of the unit in use is displayed.
- You can also check the remaining battery charge of the headset unit and the charging case with the “Sound Connect” app. Android smartphones and iPhone both support this app.

### Note

- If the headset and smartphone are not connected with HFP, the remaining battery charge will not be correctly displayed.
- If you connect the headset to an iPhone or Android smartphone with Media audio (A2DP) only in a multipoint connection, the remaining battery charge will not be displayed correctly.
- The remaining battery charge may not be properly displayed immediately after a software update or if the headset has not been used for a long time. In this case, repeatedly charge and discharge the battery multiple times to properly display the remaining battery charge.

---

### Related Topic

- [Using the “Sound Connect” app](#)
- [About the indicator](#)

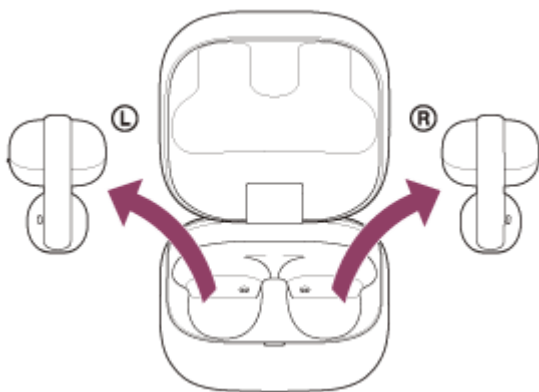
TP1002090571

5-071-247-11(1) Copyright 2026 Sony Corporation

## Turning on the headset

### When the headset is stored in the charging case

- 1 Remove the headset units from the charging case.



The headset turns on automatically. The connection between the left and right units is established. When you remove only one headset unit from the charging case, only the removed unit turns on.

### When the headset is not stored in the charging case

After 15 minutes of disconnection, the headset turns off automatically. In this case, the headset units will also turn on when they are set in the charging case and then removed from the charging case.

### When the headset is turned on

When turning on the headset for the first time after purchase or just after initializing the headset, the headset goes into Bluetooth pairing mode.

#### Related Topic

- [Using the "Sound Connect" app](#)
- [Using only one headset unit](#)
- [Turning off the headset](#)

TP1002090570

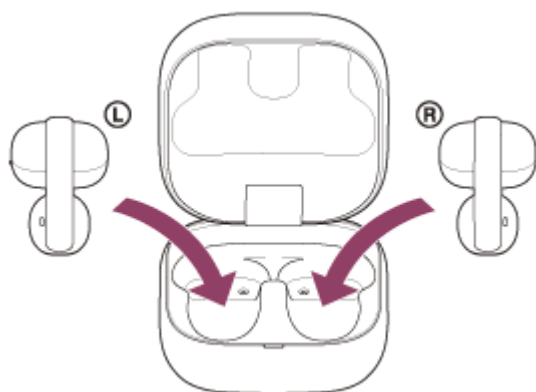
## Turning off the headset

### 1 Set the headset units into the charging case.

Put the left-side headset unit back into the left hole of the charging case. Put the right-side headset unit back into the right hole of the charging case. There is a tactile dot on the left-side headset unit.

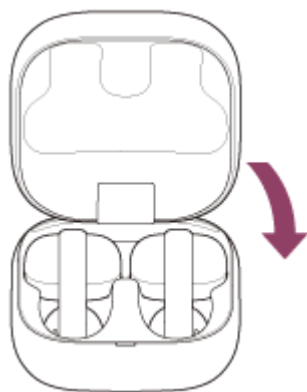
When putting the headset back into the charging case, insert the earcuff body (small) first.

Each headset unit will be set to the correct position in the charging case by the built-in magnet.



When the rechargeable battery of the charging case still has power, the indicator on the charging case lights up in orange or green for about 6 seconds.

The charging starts on the headset. Close the charging case lid.



The headset turns off.

### When the headset is left removed

After 15 minutes of Bluetooth disconnection, the headset turns off automatically.

To turn off the power before the headset turns off automatically, set the headset units into the charging case, and close the charging case lid.

Be sure to close the charging case lid to prevent the battery of the charging case from being consumed.

#### Hint

- You can also turn off the headset with the "Sound Connect" app.

#### Note

- When the remaining battery charge of the charging case is not sufficient, the charging of the headset will not start. Charge the charging case.

---

### Related Topic

- [Using the “Sound Connect” app](#)
- [Charging](#)
- [Turning on the headset](#)

TP1002088585

5-071-247-11(1) Copyright 2026 Sony Corporation



## How to make a wireless connection to Bluetooth devices

---

You can enjoy music and hands-free calling with the headset wirelessly by using your device's Bluetooth function.

### Pairing

To use the Bluetooth function, you must register both devices that will connect with each other in advance. This process of registration is called "pairing".

Pair the headset and the device manually.

### Connecting to a paired device

Once a device is paired, it is not necessary to pair it again. Connect to devices already paired with the headset using the methods necessary for each device.

---

#### Related Topic

- [Pairing and connecting with an Android smartphone](#)
- [Pairing and connecting with an iPhone](#)
- [Pairing and connecting with a computer \(Windows® 11\)](#)
- [Pairing and connecting with a computer \(Mac\)](#)
- [Pairing and connecting with a Bluetooth device](#)
- [Connecting to a paired Android smartphone](#)
- [Connecting to a paired iPhone](#)
- [Connecting to a paired computer \(Windows 11\)](#)
- [Connecting to a paired computer \(Mac\)](#)
- [Connecting to a paired Bluetooth device](#)

TP1002088640

Wireless Stereo Headset  
LinkBuds Clip

## Connecting with the “Sound Connect” app

Launch the “Sound Connect” app on your Android smartphone/iPhone to connect the headset to a smartphone or iPhone.



Sony Sound Connect 

### Hint

- To pair a second or subsequent device, the headset can be entered into pairing mode on the “Sound Connect” app.

### Note

- The connection between the headset and some smartphones or iPhones may become unstable when using the “Sound Connect” app. In that case, follow the procedures in [“Connecting to a paired Android smartphone”](#), or [“Connecting to a paired iPhone”](#) to connect to the headset.

### Related Topic

- [Using the “Sound Connect” app](#)
- [Pairing and connecting with an Android smartphone](#)
- [Pairing and connecting with an iPhone](#)
- [Pairing and connecting with a computer \(Windows® 11\)](#)
- [Pairing and connecting with a computer \(Mac\)](#)
- [Connecting to a paired Android smartphone](#)
- [Connecting to a paired iPhone](#)

TP1002088581

## Pairing and connecting with an Android smartphone

The operating procedure to register the device that you wish to connect to is called “pairing”. First, pair a device to use it with the headset for the first time.

Before starting the operating procedure, check the following.

- The Android smartphone is placed within 1 m (3.2 ft) of the headset.
- The headset is charged sufficiently.
- The operating instructions for the Android smartphone are in hand.

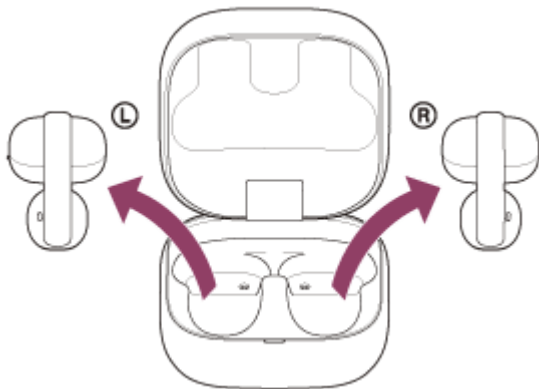
### 1 Check the status of the headset.

The headset enters pairing mode automatically in the following cases. Proceed to step 2.

- When you pair the headset with a device for the first time after purchasing the headset
- After initializing the headset and clearing all pairing information

When you want to pair an additional device, if the headset already has pairing information for other devices, proceed to step 3.

### 2 Remove both headset units from the charging case.



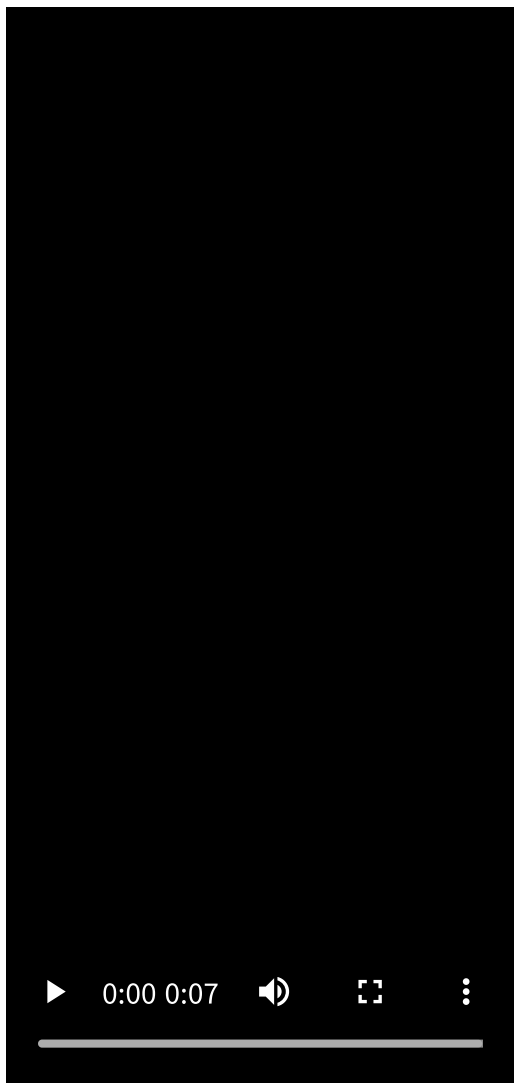
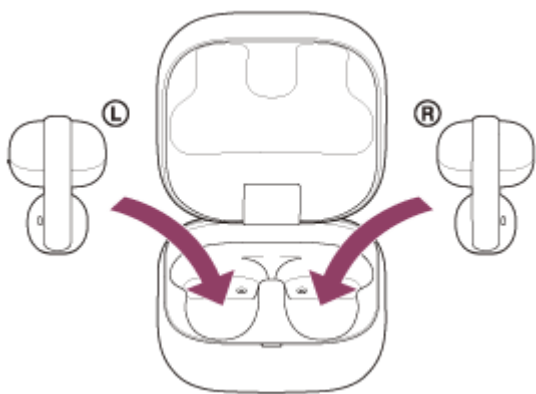
The headset turns on automatically.

The headset enters pairing mode automatically.

You will hear a notification sound and the voice guidance say “Pairing” from the headset units at the same time.

Proceed to step 4.

### 3 Set the headset units into the charging case. With the charging case lid open, press and hold the pairing button on the back of the charging case for about 5 seconds or more.



#### Hint

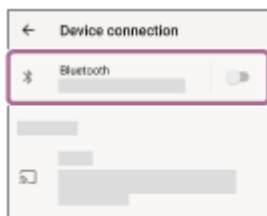
- Leave the charging case lid open. The headset does not enter pairing mode with the charging case lid closed.

The indicator on the charging case repeatedly flashes in blue twice in a row and the headset goes into pairing mode.

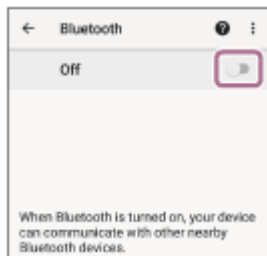
You can remove the headset from the charging case after entering pairing mode.

**4** Unlock the screen of the Android smartphone if it is locked.

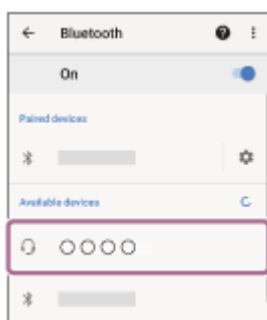
**5** On your Android smartphone screen, select the following items.  
[Settings] - [Device connection] - [Bluetooth]



**6 Touch the switch to turn on the Bluetooth function.**



**7 Touch [LinkBuds Clip].**



If Passkey (\*) input is required, input “0000”.

The headset and smartphone are paired and connected with each other.

When the headset is placed in the charging case, the indicator on the charging case flashes in blue 10 times.

When both headset units are being removed from the charging case, you will hear a notification sound indicating that the connection is established from both headset units at the same time. When only one headset unit is removed from the charging case, you will hear a notification sound from the headset unit that has been removed.

If they are not connected, see “[Connecting to a paired Android smartphone](#)”.

If [LinkBuds Clip] does not appear on your Android smartphone screen, try again from step 5.

(\*) A Passkey may be called “Passcode”, “PIN code”, “PIN number”, or “Password”.

## About the instruction manual video

Watch the video for how to perform pairing for the first time. No audio explanation is available.

Models for countries and regions excluding Chinese mainland and Japan:

[https://rd1.sony.net/help/mdr/mov0096/h\\_zz/](https://rd1.sony.net/help/mdr/mov0096/h_zz/)

Models for Chinese mainland:

<https://rd1.sony.net/help/mdr/mov0096/zh-cn/>

Models for Japan:

<https://rd1.sony.net/help/mdr/mov0096/ja/>

### Hint

- The above operating procedure is an example. For more details, refer to the operating instructions supplied with the Android smartphone.
- To delete all Bluetooth pairing information, see “[Initializing the headset to restore factory settings](#)”.

## Note

- If pairing is not established within 5 minutes, pairing mode is canceled. In this case, start the operating procedure again from step 2 or step 3.
- Once Bluetooth devices are paired, there is no need to pair them again, except in the following cases:
  - If pairing information is deleted, such as after a repair
  - When a 9th device is paired  
The headset can be paired with up to 8 devices. If you pair a 9th device, the pairing information with the oldest connection date and time will be overwritten with the information for the new device.
  - When the pairing information for the headset has been deleted from the connected Bluetooth device
  - When the headset is initialized  
All of the pairing information will be deleted. In this case, delete the pairing information for the headset from the connected device and then pair them again.
- The headset can be paired with multiple devices, but can only play music from 1 paired device at a time.

---

## Related Topic

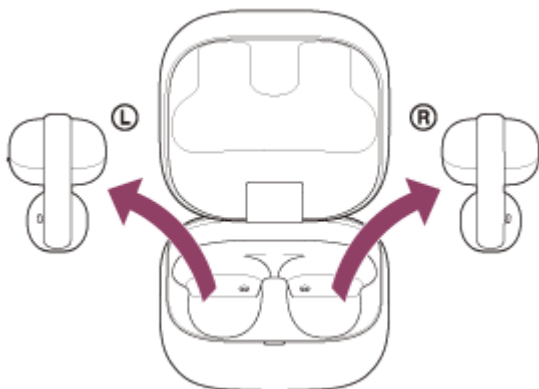
- [Wearing the headset](#)
- [Using only one headset unit](#)
- [How to make a wireless connection to Bluetooth devices](#)
- [Connecting to a paired Android smartphone](#)
- [Listening to music from a device via a Bluetooth connection](#)
- [Disconnecting Bluetooth connection \(after use\)](#)
- [Initializing the headset to restore factory settings](#)

TP1002088980

## Connecting to a paired Android smartphone

**1** Unlock the screen of the Android smartphone if it is locked.

**2** Remove the headset units from the charging case.



The headset turns on automatically.

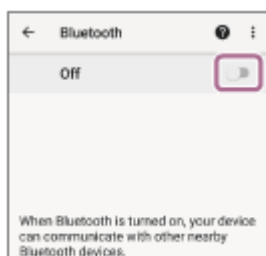
When the headset has automatically connected to the last connected device, you will hear a notification sound indicating that the connection is established from the headset units.

Check the connection status on the Android smartphone. If it is not connected, proceed to step 3.

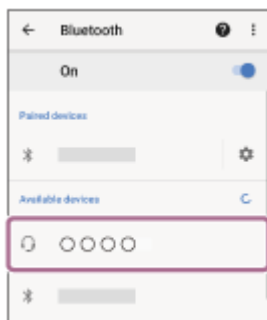
**3** On your Android smartphone screen, select the following items.  
[Settings] - [Device connection] - [Bluetooth]



**4** Touch the switch to turn on the Bluetooth function.



**5** Touch [LinkBuds Clip].



You will hear a notification sound indicating that the connection is established from the headset.

### Hint

- The above operating procedure is an example. For more details, refer to the operating instructions supplied with the Android smartphone.

### Note

- When connecting, [LinkBuds Clip], [LE\_LinkBuds Clip], or both may be displayed on the connecting device. If both are displayed, select [LinkBuds Clip].
- If the last-connected Bluetooth device is placed near the headset, the headset may connect automatically to the device by simply turning on the headset. If this is the case, deactivate the Bluetooth function on the last-connected device or turn off the power.
- If you cannot connect your Android smartphone to the headset, delete the headset pairing information on your Android smartphone. Then, pair them again. For the operating procedures on your Android smartphone, refer to the operating instructions supplied with the Android smartphone.

### Related Topic

- [Wearing the headset](#)
- [Using only one headset unit](#)
- [How to make a wireless connection to Bluetooth devices](#)
- [Pairing and connecting with an Android smartphone](#)
- [Listening to music from a device via a Bluetooth connection](#)
- [Disconnecting Bluetooth connection \(after use\)](#)

TP1002088575



## Pairing and connecting with an iPhone

The operating procedure to register the device that you wish to connect to is called “pairing”. First, pair a device to use it with the headset for the first time.

Before starting the operating procedure, check the following.

- The iPhone is placed within 1 m (3.2 ft) of the headset.
- The headset is charged sufficiently.
- The operating instructions for the iPhone are in hand.

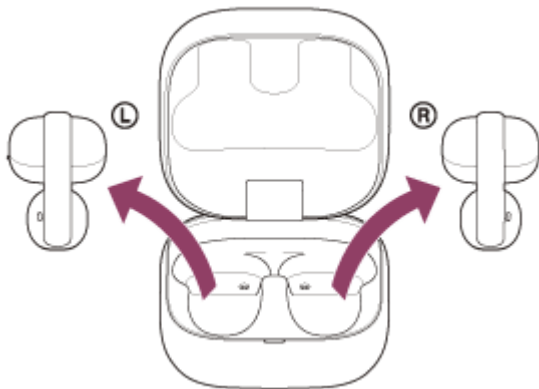
### 1 Check the status of the headset.

The headset enters pairing mode automatically in the following cases. Proceed to step 2.

- When you pair the headset with a device for the first time after purchasing the headset
- After initializing the headset and clearing all pairing information

When you want to pair an additional device, if the headset already has pairing information for other devices, proceed to step 3.

### 2 Remove both headset units from the charging case.



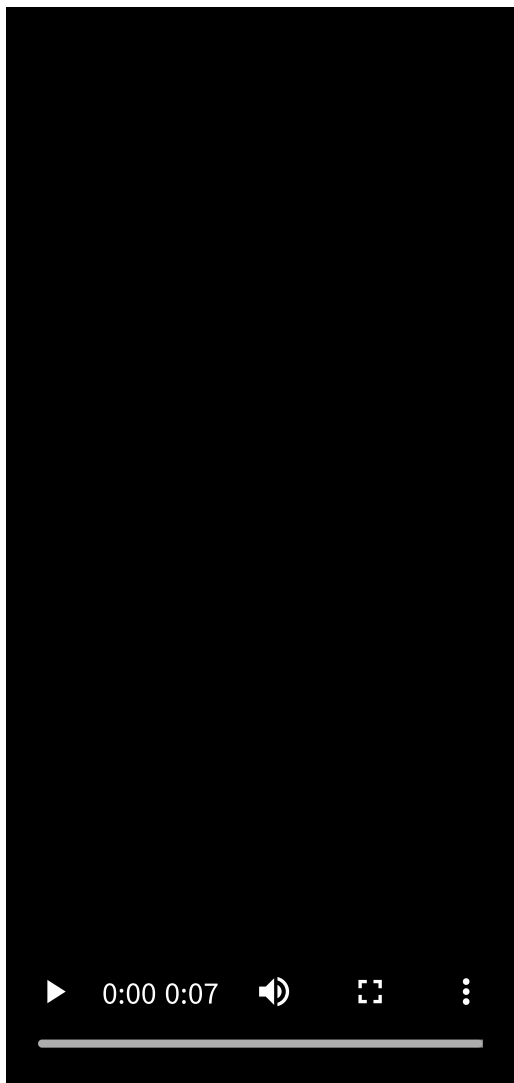
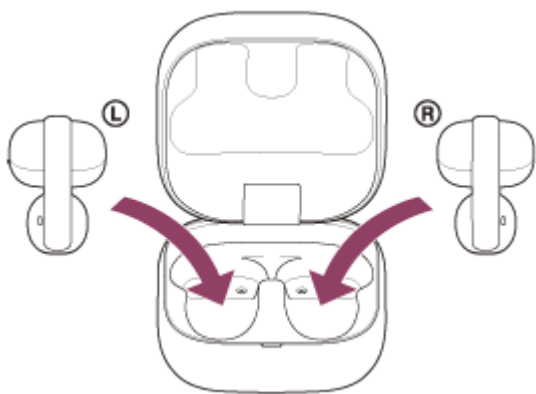
The headset turns on automatically.

The headset enters pairing mode automatically.

You will hear a notification sound and the voice guidance say “Pairing” from the headset units at the same time.

Proceed to step 4.

### 3 Set the headset units into the charging case. With the charging case lid open, press and hold the pairing button on the back of the charging case for about 5 seconds or more.



#### Hint

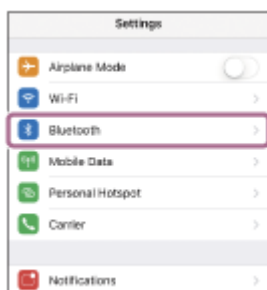
- Leave the charging case lid open. The headset does not enter pairing mode with the charging case lid closed.

The indicator on the charging case repeatedly flashes in blue twice in a row and the headset goes into pairing mode.

You can remove the headset from the charging case after entering pairing mode.

**4** Unlock the screen of the iPhone if it is locked.

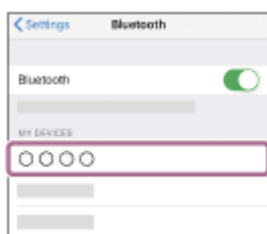
**5** On your iPhone screen, go to [Settings] and touch [Bluetooth].



- 6 Touch the switch to turn on the Bluetooth function.



- 7 Touch [LinkBuds Clip].



If Passkey (\*) input is required, input "0000".

The headset and iPhone are paired and connected with each other.

When the headset is placed in the charging case, the indicator on the charging case flashes in blue 10 times.

When both headset units are being removed from the charging case, you will hear a notification sound indicating that the connection is established from both headset units at the same time. When only one headset unit is removed from the charging case, you will hear a notification sound from the headset unit that has been removed.

If they are not connected, see "[Connecting to a paired iPhone](#)".

If [LinkBuds Clip] does not appear on the display of the iPhone, try again from step 5.

(\*) A Passkey may be called "Passcode", "PIN code", "PIN number", or "Password".

## About the instruction manual video

Watch the video for how to perform pairing for the first time. No audio explanation is available.

Models for countries and regions excluding Chinese mainland and Japan:

[https://rd1.sony.net/help/mdr/mov0096/h\\_zz/](https://rd1.sony.net/help/mdr/mov0096/h_zz/)

Models for Chinese mainland:

<https://rd1.sony.net/help/mdr/mov0096/zh-cn/>

Models for Japan:

<https://rd1.sony.net/help/mdr/mov0096/ja/>

### Hint

- The above operating procedure is an example. For more details, refer to the operating instructions supplied with the iPhone.
- To delete all Bluetooth pairing information, see "[Initializing the headset to restore factory settings](#)".

### Note

- If pairing is not established within 5 minutes, pairing mode is canceled. In this case, start the operating procedure again from step 2 or step 3.
- Once Bluetooth devices are paired, there is no need to pair them again, except in the following cases:
  - If pairing information is deleted, such as after a repair
  - When a 9th device is paired  
The headset can be paired with up to 8 devices. If you pair a 9th device, the pairing information with the oldest connection date and time will be overwritten with the information for the new device.
  - When the pairing information for the headset has been deleted from the connected Bluetooth device
  - When the headset is initialized  
All of the pairing information will be deleted. In this case, delete the pairing information for the headset from the connected device and then pair them again.
- The headset can be paired with multiple devices, but can only play music from 1 paired device at a time.

---

## Related Topic

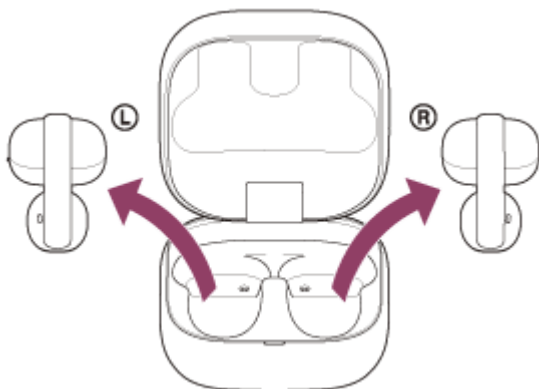
- [Wearing the headset](#)
- [Using only one headset unit](#)
- [How to make a wireless connection to Bluetooth devices](#)
- [Connecting to a paired iPhone](#)
- [Listening to music from a device via a Bluetooth connection](#)
- [Disconnecting Bluetooth connection \(after use\)](#)
- [Initializing the headset to restore factory settings](#)

TP1002088421

## Connecting to a paired iPhone

**1** Unlock the screen of the iPhone if it is locked.

**2** Remove the headset units from the charging case.

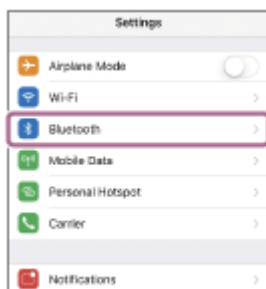


The headset turns on automatically.

When the headset has automatically connected to the last connected device, you will hear a notification sound indicating that the connection is established from the headset units.

Check the connection status on the iPhone. If it is not connected, proceed to step 3.

**3** On your iPhone screen, go to [Settings] and touch [Bluetooth].



**4** Touch the switch to turn on the Bluetooth function.



**5** Touch [LinkBuds Clip].



You will hear a notification sound indicating that the connection is established from the headset.

### Hint

- The above operating procedure is an example. For more details, refer to the operating instructions supplied with the iPhone.

### Note

- When connecting, [LinkBuds Clip], [LE\_LinkBuds Clip], or both may be displayed on the connecting device. If both are displayed, select [LinkBuds Clip].
- If the last-connected Bluetooth device is placed near the headset, the headset may connect automatically to the device by simply turning on the headset. If this is the case, deactivate the Bluetooth function on the last-connected device or turn off the power.
- If you cannot connect your iPhone to the headset, delete the headset pairing information on your iPhone. Then, pair them again. For the operating procedures on your iPhone, refer to the operating instructions supplied with the iPhone.

### Related Topic

- [Wearing the headset](#)
- [Using only one headset unit](#)
- [How to make a wireless connection to Bluetooth devices](#)
- [Pairing and connecting with an iPhone](#)
- [Listening to music from a device via a Bluetooth connection](#)
- [Disconnecting Bluetooth connection \(after use\)](#)

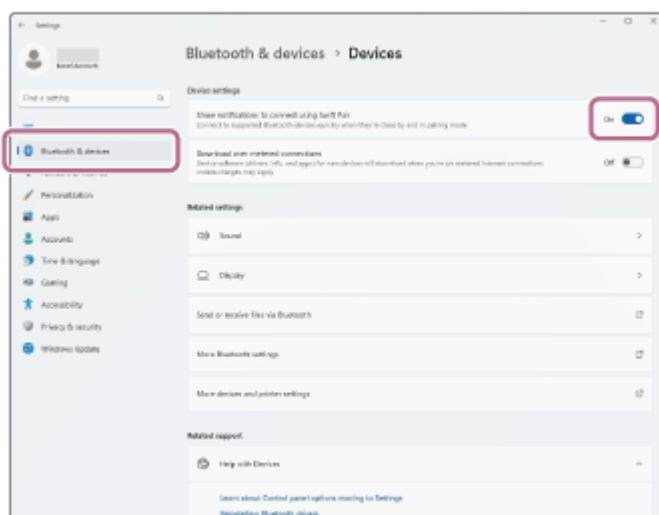
TP1002088418

## Pairing and connecting with a computer (Windows® 11)

The operating procedure to register the device that you wish to connect to is called “pairing”. First, pair a device to use it with the headset for the first time.

Before starting the operating procedure, check the following.

- Your computer has a Bluetooth function that supports music playback connections (A2DP).
- The computer is placed within 1 m (3.2 ft) of the headset.
- The headset is charged sufficiently.
- The operating instructions for the computer are in hand.
- Depending on the computer you are using, the built-in Bluetooth adaptor may need to be turned on. In the following cases, refer to the operating instructions supplied with your computer.
  - You do not know how to turn on the Bluetooth adaptor.
  - You want to know if your computer has a built-in Bluetooth adaptor.
- To use the Swift Pair function, click the following button, items, and switch in order to turn on the Swift Pair function.  
[Start] button - [Settings] - [Bluetooth & devices] - [Devices] - [Show notifications to connect using Swift Pair]



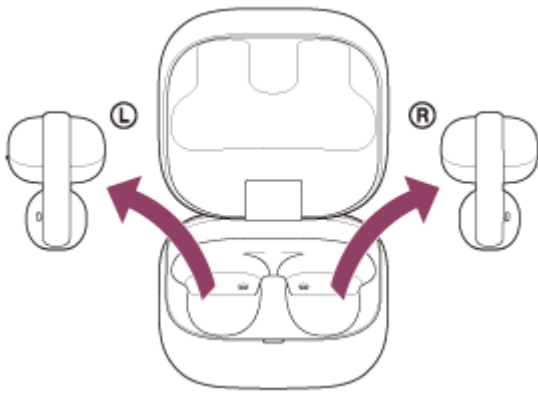
### 1 Check the status of the headset.

The headset enters pairing mode automatically in the following cases. Proceed to step 2.

- When you pair the headset with a device for the first time after purchasing the headset
- After initializing the headset and clearing all pairing information

When you want to pair an additional device, if the headset already has pairing information for other devices, proceed to step 3.

### 2 Remove both headset units from the charging case.



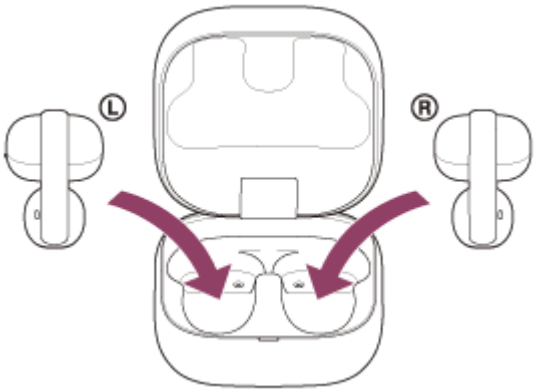
The headset turns on automatically.

The headset enters pairing mode automatically.

You will hear a notification sound and the voice guidance say "Pairing" from the headset units at the same time.

Proceed to step 4.

- 3 Set the headset units into the charging case. With the charging case lid open, press and hold the pairing button on the back of the charging case for about 5 seconds or more.**







#### Hint

- Leave the charging case lid open. The headset does not enter pairing mode with the charging case lid closed.

The indicator on the charging case repeatedly flashes in blue twice in a row and the headset goes into pairing mode.

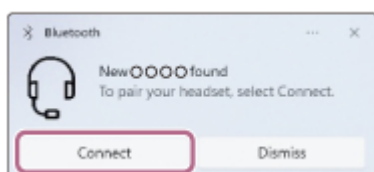
You can remove the headset from the charging case after entering pairing mode.

#### 4 Wake the computer up if the computer is in standby (sleep) or hibernation mode.

To use the Swift Pair function, proceed to step 5.

To connect without using the Swift Pair function, proceed to step 6.

#### 5 Select [Connect] from the pop-up menu displayed on your computer screen.

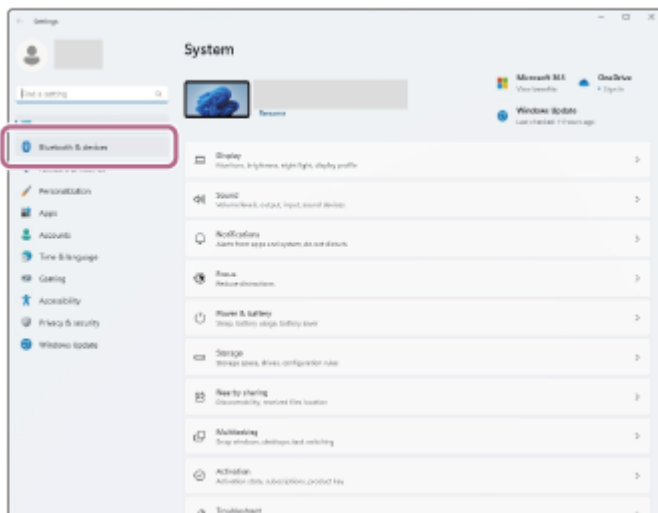


The headset and computer are paired and connected with each other.

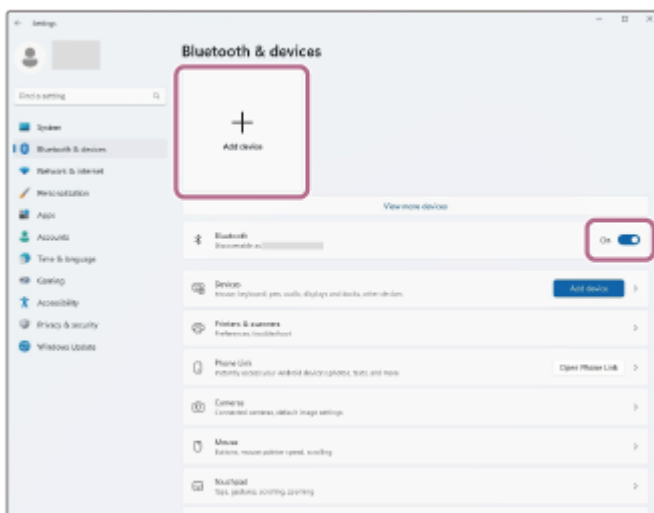
You will hear a notification sound indicating that the connection is established from the headset.

#### 6 On your computer screen, click the [Start] button, then [Settings].

7 Click [Bluetooth & devices].



8 Click the [Bluetooth] switch to turn on the Bluetooth function. Click [Add device].



9 Click [Bluetooth].



10 Click [LinkBuds Clip].



If Passkey (\*) input is required, input "0000".

The headset and computer are paired and connected with each other.

When the headset is placed in the charging case, the indicator on the charging case flashes in blue 10 times.

When both headset units are being removed from the charging case, you will hear a notification sound indicating that the connection is established from both headset units at the same time. When only one headset unit is removed from the charging case, you will hear a notification sound from the headset unit that has been removed.

If they are not connected, see ["Connecting to a paired computer \(Windows 11\)"](#).

If [LinkBuds Clip] does not appear on your computer screen, try again from step 6.

(\*) A Passkey may be called "Passcode", "PIN code", "PIN number", or "Password".

## Hint

- The above operating procedure is an example. For more details, refer to the operating instructions supplied with the computer.
- To delete all Bluetooth pairing information, see ["Initializing the headset to restore factory settings"](#).

## Note

- If pairing is not established within 5 minutes, pairing mode is canceled. In this case, start the operating procedure again from step 2 or step 3.
- Once Bluetooth devices are paired, there is no need to pair them again, except in the following cases:
  - If pairing information is deleted, such as after a repair
  - When a 9th device is paired
 

The headset can be paired with up to 8 devices. If you pair a 9th device, the pairing information with the oldest connection date and time will be overwritten with the information for the new device.
  - When the pairing information for the headset has been deleted from the connected Bluetooth device
  - When the headset is initialized
 

All of the pairing information will be deleted. In this case, delete the pairing information for the headset from the connected device and then pair them again.
- The headset can be paired with multiple devices, but can only play music from 1 paired device at a time.

## Related Topic

- [Wearing the headset](#)
- [Using only one headset unit](#)
- [How to make a wireless connection to Bluetooth devices](#)
- [Connecting to a paired computer \(Windows 11\)](#)
- [Listening to music from a device via a Bluetooth connection](#)

- [Disconnecting Bluetooth connection \(after use\)](#)
- [Initializing the headset to restore factory settings](#)

TP1002095494

5-071-247-11(1) Copyright 2026 Sony Corporation

## Pairing and connecting with a computer (Mac)

The operating procedure to register the device that you wish to connect to is called “pairing”. First, pair a device to use it with the headset for the first time.

### Compatible OS

macOS (version 12 or later)

Before starting the operating procedure, check the following.

- Your computer has a Bluetooth function that supports music playback connections (A2DP).
- The computer is placed within 1 m (3.2 ft) of the headset.
- The headset is charged sufficiently.
- The operating instructions for the computer are in hand.
- Depending on the computer you are using, the built-in Bluetooth adaptor may need to be turned on. In the following cases, refer to the operating instructions supplied with your computer.
  - You do not know how to turn on the Bluetooth adaptor.
  - You want to know if your computer has a built-in Bluetooth adaptor.

- Set the computer speaker to on.

If the computer speaker is turned off, no sound can be heard from the headset.

🔊 : the icon showing the speaker is off

The icon below shows the computer speaker is turned on.



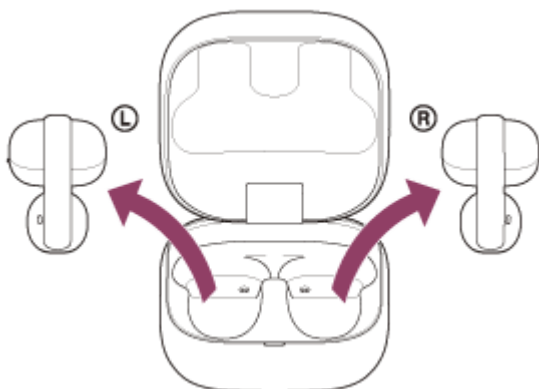
#### 1 Check the status of the headset.

The headset enters pairing mode automatically in the following cases. Proceed to step 2.

- When you pair the headset with a device for the first time after purchasing the headset
- After initializing the headset and clearing all pairing information

When you want to pair an additional device, if the headset already has pairing information for other devices, proceed to step 3.

#### 2 Remove both headset units from the charging case.

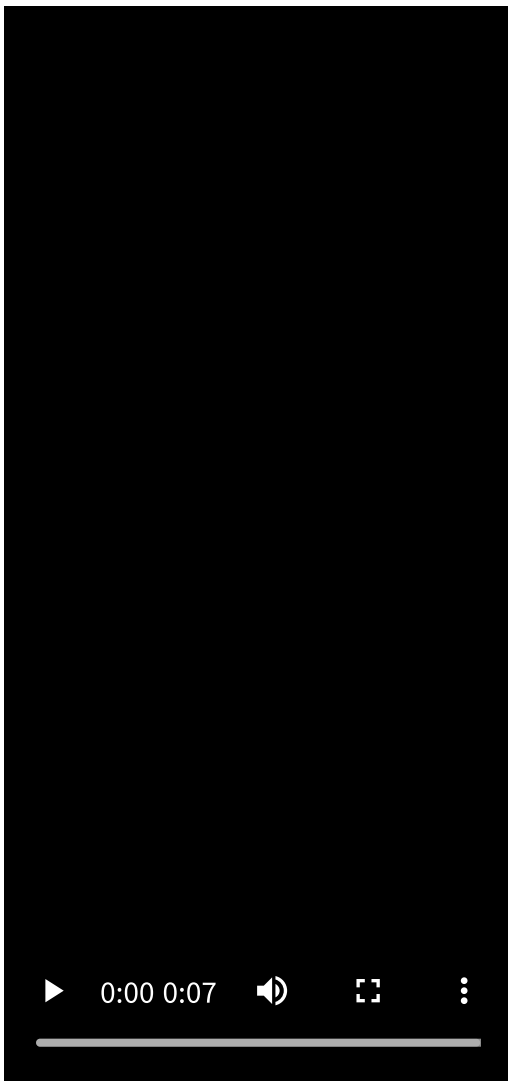
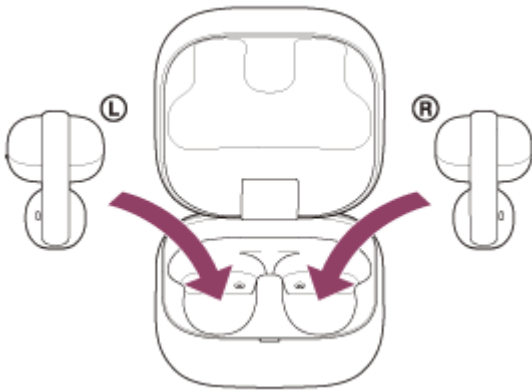


The headset turns on automatically.

The headset enters pairing mode automatically.

You will hear a notification sound and the voice guidance say “Pairing” from the headset units at the same time. Proceed to step 4.

- 3 Set the headset units into the charging case. With the charging case lid open, press and hold the pairing button on the back of the charging case for about 5 seconds or more.**



#### Hint


- Leave the charging case lid open. The headset does not enter pairing mode with the charging case lid closed.

The indicator on the charging case repeatedly flashes in blue twice in a row and the headset goes into pairing mode.

You can remove the headset from the charging case after entering pairing mode.

4 Wake the computer up if the computer is in standby (sleep) or hibernation mode.

5 Select the following items from the Dock at the bottom of your computer screen.  
[System Preferences] - [Bluetooth]

 : the system preferences icon



6 On the [Bluetooth] screen, select [LinkBuds Clip], then click [Connect].



If Passkey (\*) input is required, input "0000".

The headset and computer are paired and connected with each other.

When the headset is placed in the charging case, the indicator on the charging case flashes in blue 10 times.

When both headset units are being removed from the charging case, you will hear a notification sound indicating that the connection is established from both headset units at the same time. When only one headset unit is removed from the charging case, you will hear a notification sound from the headset unit that has been removed.

If they are not connected, see ["Connecting to a paired computer \(Mac\)"](#).

If [LinkBuds Clip] does not appear on your computer screen, try again from step 5.

(\*) A Passkey may be called "Passcode", "PIN code", "PIN number", or "Password".

### Hint

- The above operating procedure is an example. For more details, refer to the operating instructions supplied with the computer.
- To delete all Bluetooth pairing information, see ["Initializing the headset to restore factory settings"](#).

### Note

- If pairing is not established within 5 minutes, pairing mode is canceled. In this case, start the operating procedure again from step 2 or step 3.

- Once Bluetooth devices are paired, there is no need to pair them again, except in the following cases:
  - If pairing information is deleted, such as after a repair
  - When a 9th device is paired  
The headset can be paired with up to 8 devices. If you pair a 9th device, the pairing information with the oldest connection date and time will be overwritten with the information for the new device.
  - When the pairing information for the headset has been deleted from the connected Bluetooth device
  - When the headset is initialized  
All of the pairing information will be deleted. In this case, delete the pairing information for the headset from the connected device and then pair them again.
- The headset can be paired with multiple devices, but can only play music from 1 paired device at a time.

---

## Related Topic

- [Wearing the headset](#)
- [Using only one headset unit](#)
- [How to make a wireless connection to Bluetooth devices](#)
- [Connecting to a paired computer \(Mac\)](#)
- [Listening to music from a device via a Bluetooth connection](#)
- [Disconnecting Bluetooth connection \(after use\)](#)
- [Initializing the headset to restore factory settings](#)

TP1002089983



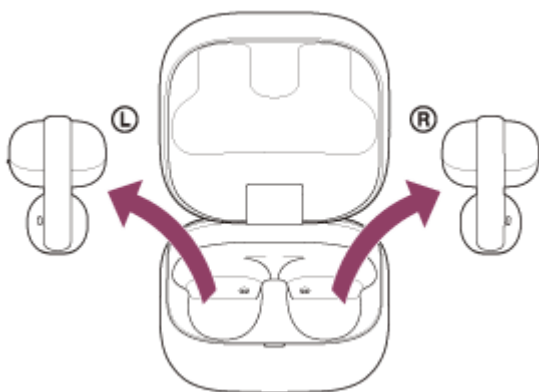
## Connecting to a paired computer (Windows 11)

Before starting the operating procedure, check the following.

- Depending on the computer you are using, the built-in Bluetooth adaptor may need to be turned on. In the following cases, refer to the operating instructions supplied with your computer.
  - You do not know how to turn on the Bluetooth adaptor.
  - You want to know if your computer has a built-in Bluetooth adaptor.

**1 Wake the computer up if the computer is in standby (sleep) or hibernation mode.**

**2 Remove the headset units from the charging case.**

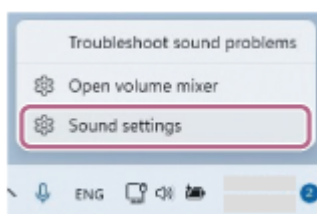


The headset turns on automatically.

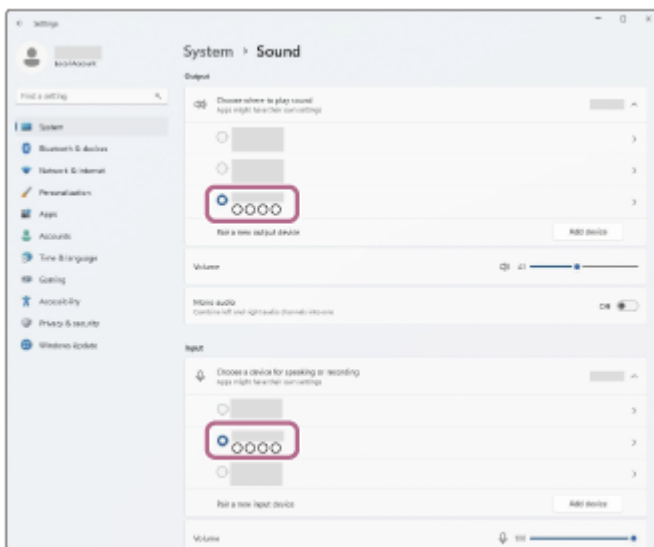
When the headset has automatically connected to the last connected device, you will hear a notification sound indicating that the connection is established from the headset units.

Check the connection status on the computer. If it is not connected, proceed to step 3.

**3 On your computer screen, right-click the speaker icon on the toolbar, then select [Sound settings].**

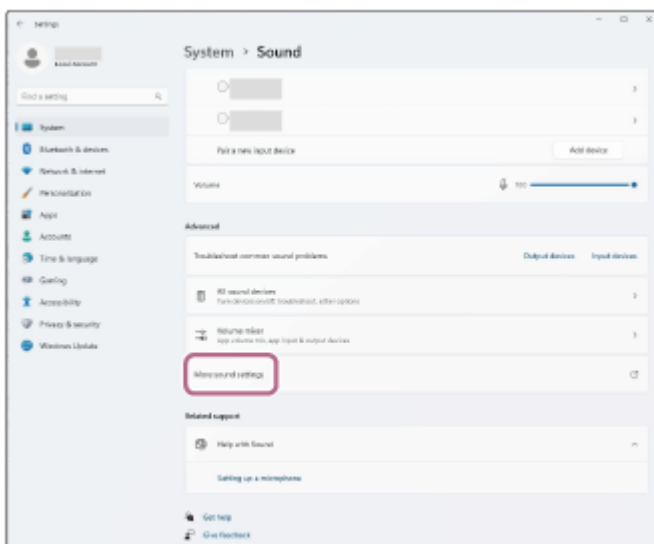


**4 On the [Sound] screen, select [LinkBuds Clip] for [Output] and [Input].**

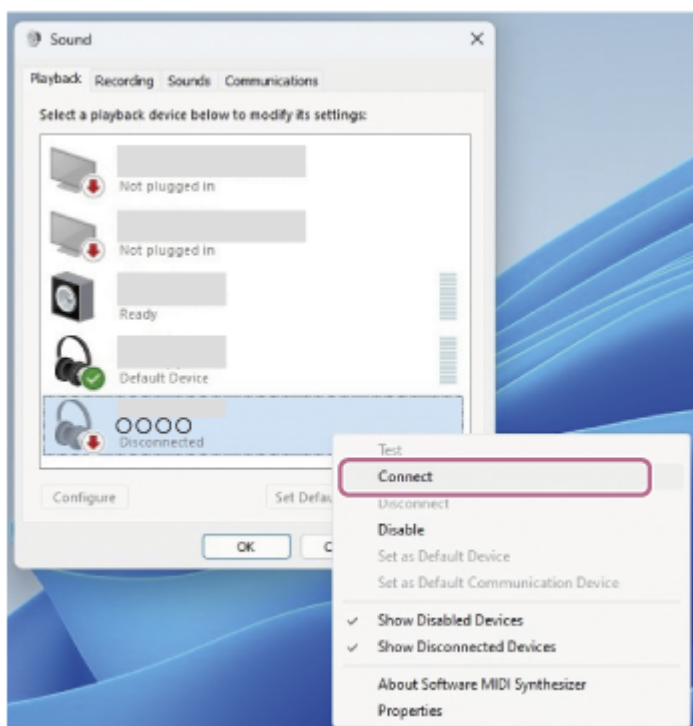


If [LinkBuds Clip] is not displayed for [Output] and [Input], proceed to step 5.

**5 Click [More sound settings].**

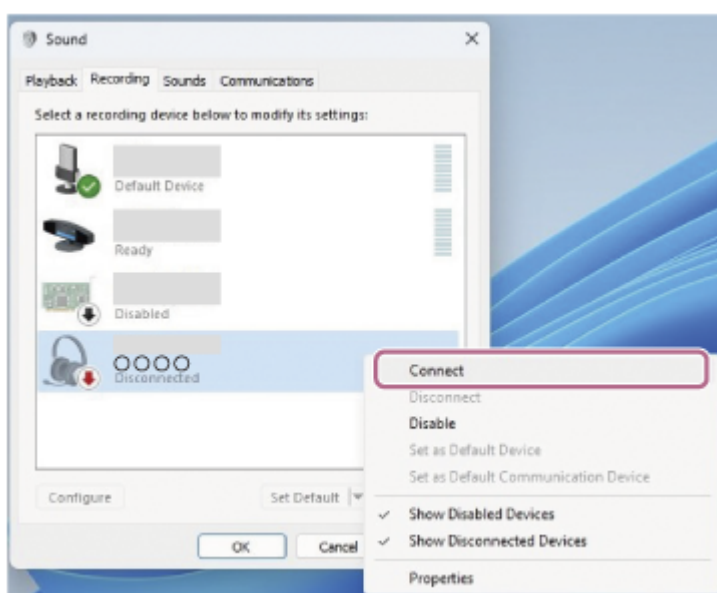


**6 On the [Playback] tab on the [Sound] screen, select [LinkBuds Clip] and right-click it. Select [Connect] from the displayed menu.**



You will hear a notification sound indicating that the connection is established from the headset.

- 7 On the [Recording] tab, select [LinkBuds Clip], right-click it, and select [Connect] from the displayed menu.



### Hint

- The above operating procedure is an example. For more details, refer to the operating instructions supplied with the computer.

### Note

- If the music playback sound quality is poor, check that the A2DP function which supports music playback connections is enabled in the computer settings. For more details, refer to the operating instructions supplied with the computer.
- If the last-connected Bluetooth device is placed near the headset, the headset may connect automatically to the device by simply turning on the headset. If this is the case, deactivate the Bluetooth function on the last-connected device or turn off the power.
- If you cannot connect your computer to the headset, delete the headset pairing information on your computer. Then, pair them again. For the operating procedures on your computer, refer to the operating instructions supplied with the computer.

---

## Related Topic

- [Wearing the headset](#)
- [Using only one headset unit](#)
- [How to make a wireless connection to Bluetooth devices](#)
- [Pairing and connecting with a computer \(Windows® 11\)](#)
- [Listening to music from a device via a Bluetooth connection](#)
- [Disconnecting Bluetooth connection \(after use\)](#)
- [Making a video call on your computer](#)

TP1002095493

5-071-247-11(1) Copyright 2026 Sony Corporation

## Connecting to a paired computer (Mac)

### Compatible OS

macOS (version 12 or later)

Before starting the operating procedure, check the following.

- Depending on the computer you are using, the built-in Bluetooth adaptor may need to be turned on. In the following cases, refer to the operating instructions supplied with your computer.
  - You do not know how to turn on the Bluetooth adaptor.
  - You want to know if your computer has a built-in Bluetooth adaptor.
- Set the computer speaker to on.

If the computer speaker is turned off, no sound can be heard from the headset.

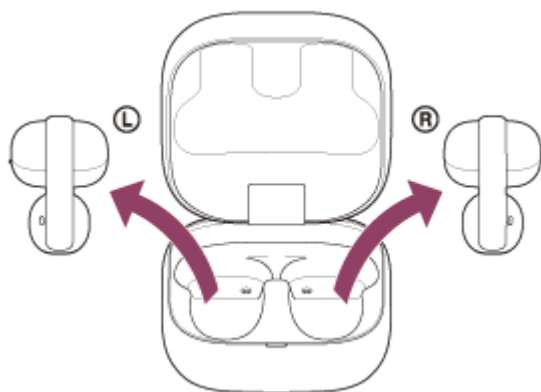
🔊 : the icon showing the speaker is off

The icon below shows the computer speaker is turned on.



**1** Wake the computer up if the computer is in standby (sleep) or hibernation mode.

**2** Remove the headset units from the charging case.



The headset turns on automatically.

When the headset has automatically connected to the last connected device, you will hear a notification sound indicating that the connection is established from the headset units.

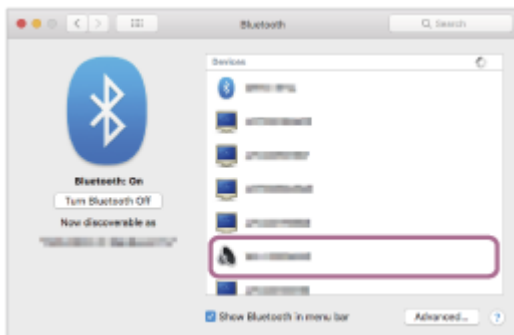
Check the connection status on the computer. If it is not connected, proceed to step 3.

**3** Select the following items from the Dock at the bottom of your computer screen.  
[System Preferences] - [Bluetooth]

⚙️ : the system preferences icon



- 4 Click [LinkBuds Clip] on the [Bluetooth] screen while pressing the computer Control button and select [Connect] from the pop-up menu.



You will hear a notification sound indicating that the connection is established from the headset.

### Hint

- The above operating procedure is an example. For more details, refer to the operating instructions supplied with the computer.

### Note

- If the music playback sound quality is poor, check that the A2DP function which supports music playback connections is enabled in the computer settings. For more details, refer to the operating instructions supplied with the computer.
- If the last-connected Bluetooth device is placed near the headset, the headset may connect automatically to the device by simply turning on the headset. If this is the case, deactivate the Bluetooth function on the last-connected device or turn off the power.
- If you cannot connect your computer to the headset, delete the headset pairing information on your computer. Then, pair them again. For the operating procedures on your computer, refer to the operating instructions supplied with the computer.

### Related Topic

- [Wearing the headset](#)
- [Using only one headset unit](#)
- [How to make a wireless connection to Bluetooth devices](#)
- [Pairing and connecting with a computer \(Mac\)](#)
- [Listening to music from a device via a Bluetooth connection](#)

- [Disconnecting Bluetooth connection \(after use\)](#)
- [Making a video call on your computer](#)

TP1002089856

5-071-247-11(1) Copyright 2026 Sony Corporation

## Pairing and connecting with a Bluetooth device

The operating procedure to register the device that you wish to connect to is called “pairing”. First, pair a device to use it with the headset for the first time.

Before starting the operating procedure, check the following.

- The Bluetooth device is placed within 1 m (3.2 ft) of the headset.
- The headset is charged sufficiently.
- The operating instructions for the Bluetooth device are in hand.

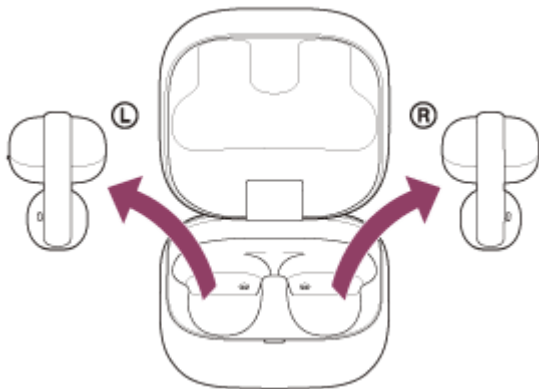
### 1 Check the status of the headset.

The headset enters pairing mode automatically in the following cases. Proceed to step 2.

- When you pair the headset with a device for the first time after purchasing the headset
- After initializing the headset and clearing all pairing information

When you want to pair an additional device, if the headset already has pairing information for other devices, proceed to step 3.

### 2 Remove both headset units from the charging case.



The headset turns on automatically.

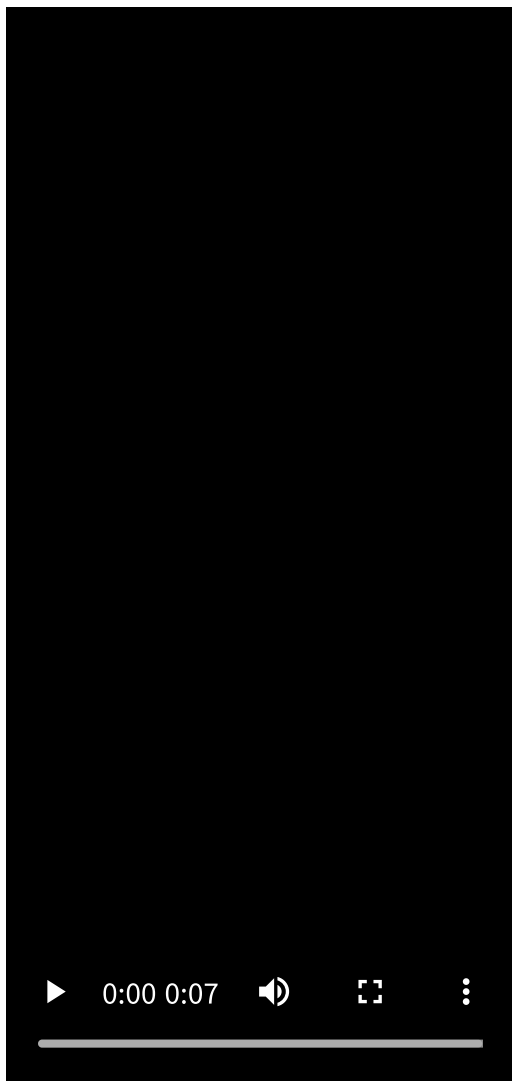
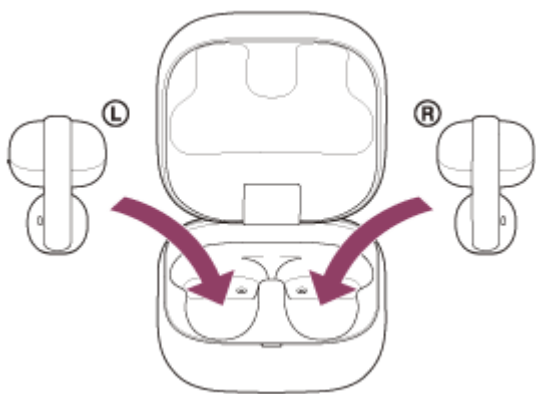
The headset enters pairing mode automatically.

You will hear a notification sound and the voice guidance say “Pairing” from the headset units at the same time.

Proceed to step 4.

### 3 Set the headset units into the charging case. With the charging case lid open, press and hold the pairing button on the back of the charging case for about 5 seconds or more.





#### Hint

- Leave the charging case lid open. The headset does not enter pairing mode with the charging case lid closed.

The indicator on the charging case repeatedly flashes in blue twice in a row and the headset goes into pairing mode.

You can remove the headset from the charging case after entering pairing mode.

#### 4 Perform the pairing procedure on the Bluetooth device to search for this headset.

[LinkBuds Clip] will be displayed on the list of detected devices on the screen of the Bluetooth device.

If [LinkBuds Clip] is not displayed, try again from step 2 or step 3.

#### 5 Select [LinkBuds Clip] displayed on the screen of the Bluetooth device for pairing.

If Passkey (\*) input is required, input "0000".

(\*) A Passkey may be called "Passcode", "PIN code", "PIN number", or "Password".

## 6 Make the Bluetooth connection from the Bluetooth device.

The headset and Bluetooth device are connected to each other.

Some devices automatically connect with the headset when pairing is complete.

When the headset is placed in the charging case, the indicator on the charging case flashes in blue 10 times.

When both headset units are being removed from the charging case, you will hear a notification sound indicating that the connection is established from both headset units at the same time. When only one headset unit is removed from the charging case, you will hear a notification sound from the headset unit that has been removed.

If they are not connected, see ["Connecting to a paired Bluetooth device"](#).

### Hint

- The above operating procedure is an example. For more details, refer to the operating instructions supplied with the Bluetooth device.
- To delete all Bluetooth pairing information, see ["Initializing the headset to restore factory settings"](#).

### Note

- If pairing is not established within 5 minutes, pairing mode is canceled. In this case, start the operating procedure again from step 2 or step 3.
- Once Bluetooth devices are paired, there is no need to pair them again, except in the following cases:
  - If pairing information is deleted, such as after a repair
  - When a 9th device is paired  
The headset can be paired with up to 8 devices. If you pair a 9th device, the pairing information with the oldest connection date and time will be overwritten with the information for the new device.
  - When the pairing information for the headset has been deleted from the connected Bluetooth device
  - When the headset is initialized  
All of the pairing information will be deleted. In this case, delete the pairing information for the headset from the connected device and then pair them again.
- The headset can be paired with multiple devices, but can only play music from 1 paired device at a time.

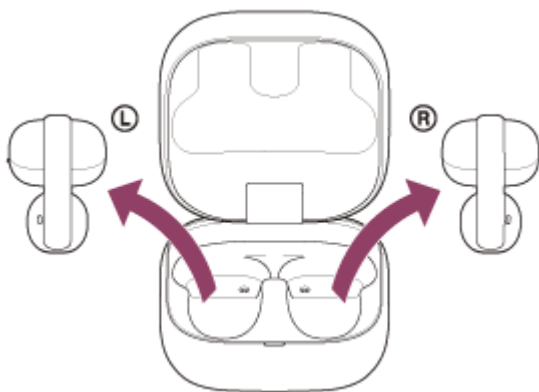
### Related Topic

- [Wearing the headset](#)
- [Using only one headset unit](#)
- [How to make a wireless connection to Bluetooth devices](#)
- [Connecting to a paired Bluetooth device](#)
- [Listening to music from a device via a Bluetooth connection](#)
- [Disconnecting Bluetooth connection \(after use\)](#)
- [Initializing the headset to restore factory settings](#)

TP1002089859

## Connecting to a paired Bluetooth device

### 1 Remove the headset units from the charging case.



The headset turns on automatically.

When the headset has automatically connected to the last connected device, you will hear a notification sound indicating that the connection is established from the headset units.

Check the connection status on the Bluetooth device. If it is not connected, proceed to step 2.

### 2 Make the Bluetooth connection from the Bluetooth device.

For the operating procedures on your Bluetooth device, refer to the operating instructions supplied with the Bluetooth device.

You will hear a notification sound indicating that the connection is established from the headset.

#### Note

- When connecting, [LinkBuds Clip], [LE\_LinkBuds Clip], or both may be displayed on the connecting device. If both are displayed, select [LinkBuds Clip].
- If the last-connected Bluetooth device is placed near the headset, the headset may connect automatically to the device by simply turning on the headset. If this is the case, deactivate the Bluetooth function on the last-connected device or turn off the power.
- If you cannot connect your Bluetooth device to the headset, delete the headset pairing information on your Bluetooth device. Then, pair them again. For the operating procedures on your Bluetooth device, refer to the operating instructions supplied with the Bluetooth device.

#### Related Topic

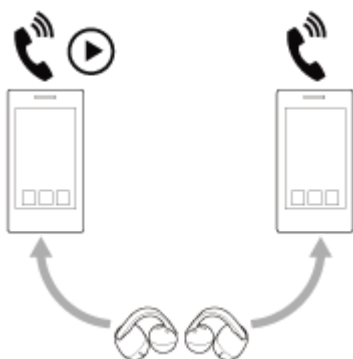
- [Wearing the headset](#)
- [Using only one headset unit](#)
- [How to make a wireless connection to Bluetooth devices](#)
- [Pairing and connecting with a Bluetooth device](#)
- [Listening to music from a device via a Bluetooth connection](#)
- [Disconnecting Bluetooth connection \(after use\)](#)



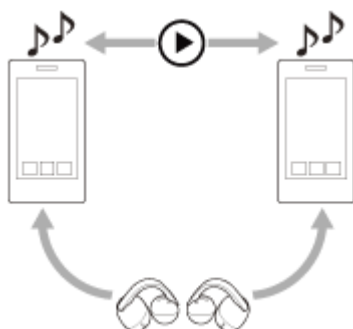
## Connecting the headset to 2 devices simultaneously (multipoint connection)

The headset can be simultaneously connected to 2 devices via Bluetooth connections, allowing you to perform the following.

- Waiting for an incoming call for 2 smartphones  
You can listen to music played on one smartphone with the headset, wait for an incoming call for both smartphones, and talk if an incoming call arrives.



- Switching music playback between 2 devices  
You can switch the music playback from one device to the other without performing a Bluetooth reconnection.



## Connecting the headset to 2 devices simultaneously via Bluetooth connections

- 1 Pair the headset with 2 devices, respectively.
- 2 Operate the first device to establish a Bluetooth connection with the headset.
- 3 Operate the second device to establish a Bluetooth connection with the headset.

The following occurs when attempting to connect a paired third device to a headset via a Bluetooth connection while 2 devices are already connected via Bluetooth connections.

The Bluetooth connection with the device that was last playing music will be maintained.

The Bluetooth connection with the other device will be disconnected.

Then a Bluetooth connection between the third device and the headset is established.

## Music playback when the headset is connected to 2 devices via Bluetooth connections

- When playing music by operating the headset, the music is played from the device that played last.

- If you want to play music from the other device, stop playback on the device that is playing the music, and start playback by operating the other device.  
Even if you start playback by operating the second device while playing music on the first device, the music from the first device will continue to be heard via the headset.

## **Talking on the phone when the headset is connected to 2 devices via Bluetooth connections**

- When the headset is connected to 2 smartphones via Bluetooth connections simultaneously, both devices will be in standby mode.
- When an incoming call arrives to the first device, a ring tone is heard via the headset. When an incoming call arrives to the second device while talking on the headset, a ring tone is heard via the second device.  
If you finish the call on the first device, the ring tone from the second device will be heard via the headset.

---

### **Related Topic**

- [Using the “Sound Connect” app](#)
- [How to make a wireless connection to Bluetooth devices](#)
- [Listening to music from a device via a Bluetooth connection](#)
- [Controlling the audio device \(Bluetooth connection\)](#)
- [Receiving a call](#)
- [Functions for a phone call](#)

TP1002095741

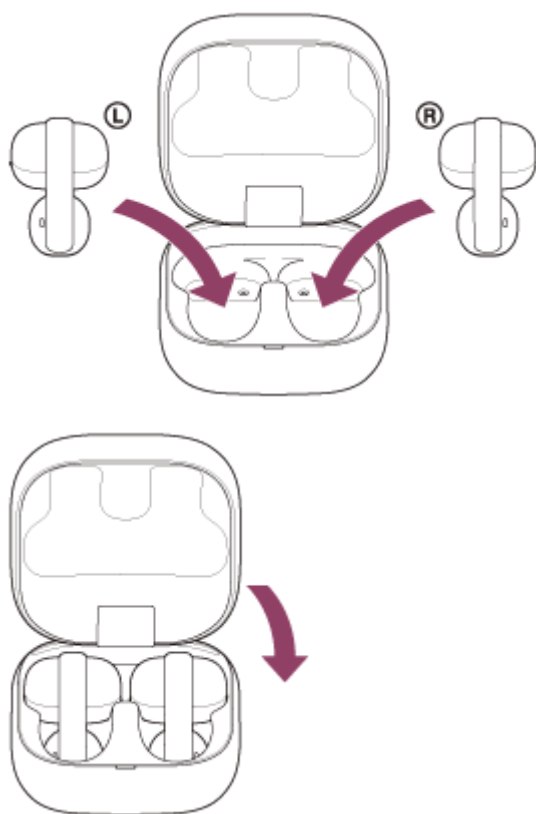
## Disconnecting Bluetooth connection (after use)

### 1 Disconnect the Bluetooth connection by operating the Bluetooth device.

You will hear a notification sound from the headset, indicating that the connection has been disconnected.

### 2 Set the headset units into the charging case, and close the charging case lid.

Put the left-side headset unit back into the left hole of the charging case. Put the right-side headset unit back into the right hole of the charging case. There is a tactile dot on the left-side headset unit. Each headset unit will be set to the correct position in the charging case by the built-in magnet.



The headset turns off.

#### Hint

- When you finish playing music, the Bluetooth connection may terminate automatically depending on the Bluetooth device.

#### Related Topic

- [Turning off the headset](#)





## Listening to music from a device via a Bluetooth connection

You can enjoy listening to music and control the device from your headset via a Bluetooth connection. Check if your Bluetooth device supports the following profiles.

- A2DP (Advanced Audio Distribution Profile)  
You can enjoy high-quality music wirelessly.
- AVRCP (Audio Video Remote Control Profile)  
You can adjust the volume and other settings.

The operating procedure may vary depending on the Bluetooth device. Refer to the operating instructions supplied with the Bluetooth device.

### 1 Put the headset units on your ears.

See "[Wearing the headset](#)" for how to put the headset units on your ears.

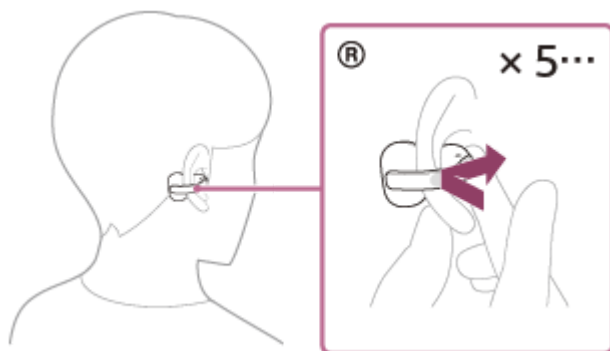
### 2 Connect the headset to a Bluetooth device.

### 3 Operate the Bluetooth device to start playback and adjust the volume to a moderate level.

Adjust the position of the earcuff body (small) on the headset for optimal sound clarity.

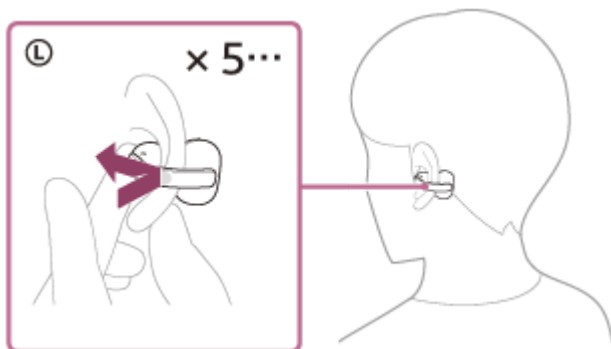
### 4 Tap the left or right unit of the headset to adjust the volume.

- Increase the volume: Tap the right-side headset unit 5 or more times quickly with an interval of about 0.2 seconds between taps during music playback.



As you repeatedly tap the headset, a notification sound is emitted and the volume increases by 1 step every 0.4 seconds, regardless of the number of times you tap.

- Lower the volume: Tap the left-side headset unit 5 or more times quickly with an interval of about 0.2 seconds or less between taps during music playback.



As you repeatedly tap the headset, a notification sound is emitted and the volume lowers by 1 step every 0.4 seconds, regardless of the number of times you tap.

When the volume reaches the maximum or minimum, an alarm sounds.

For details on tap controls, refer to [“About tap controls”](#).

### Hint

- The headset supports SCMS-T content protection. You can enjoy music and other audio on the headset from a device such as a portable TV that supports SCMS-T content protection.
- Depending on the Bluetooth device, it may be necessary to adjust the volume or set the audio output setting on the device.
- The volume can also be adjusted on the “Sound Connect” app.  
The headset volume during a call and during music playback can be independently adjusted. Even if you change the volume during music playback, the volume of a call does not change.
- You can also listen to music by removing only one headset unit from the charging case and putting it on your ear.  
When you are listening to music with only one headset unit, if you put the other headset unit on the other ear, you can listen to music with both headset units.

### Note

- You cannot adjust the volume with the headset when no music is playing.
- If the communication condition is poor, the Bluetooth device may malfunction in response to the operating procedure on the headset.
- If you are concerned about sound quality, adjust the headset to a position where the sound quality feels most optimal.
- If you notice a difference in volume between both headset units, adjust the headset to a position where the volume is balanced on both sides.

### Related Topic

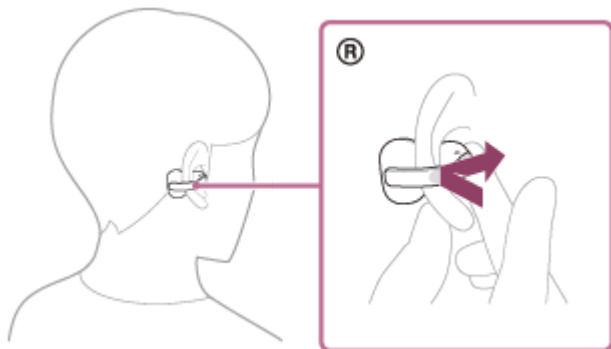
- [Wearing the headset](#)
- [Using only one headset unit](#)
- [About tap controls](#)
- [How to make a wireless connection to Bluetooth devices](#)
- [Controlling the audio device \(Bluetooth connection\)](#)

TP1002088422

## Controlling the audio device (Bluetooth connection)

If your Bluetooth device supports the AVRCP profile's operating function, the following operating procedures are available. The available functions may vary depending on the Bluetooth device, so refer to the operating instructions supplied with the device.

You can use the right-side headset unit to perform the following operating procedures.

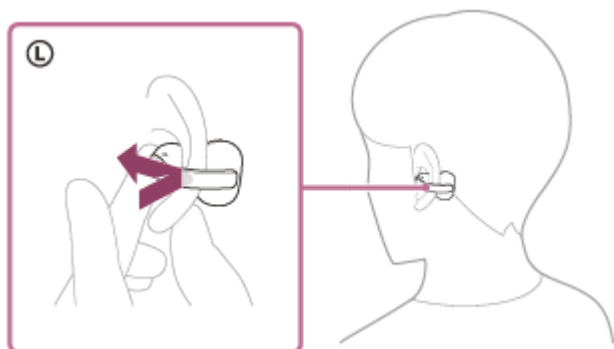


- Play/Pause: Tap the headset unit twice quickly with an interval of about 0.2 seconds.
- Skip to the beginning of the next track: Tap the headset unit 3 times quickly with an interval of about 0.2 seconds.
- Increase the volume: Tap the headset unit 5 or more times quickly with an interval of about 0.2 seconds between taps during music playback.

As you repeatedly tap the headset, a notification sound is emitted and the volume increases by 1 step every 0.4 seconds, regardless of the number of times you tap.

When the volume reaches the maximum, an alarm sounds.

You can use the left-side headset unit to perform the following operating procedures.



- Switch the listening mode: Tap the headset unit twice quickly with an interval of about 0.2 seconds during music playback.  
The modes switch in the order of standard, voice boost, and sound leakage reduction.
- Quick Access: Tap the headset unit 3 times quickly with an interval of about 0.2 seconds. Settings on the "Sound Connect" app are required.
- Lower the volume: Tap the headset unit 5 or more times quickly with an interval of about 0.2 seconds between taps during music playback.

As you repeatedly tap the headset, a notification sound is emitted and the volume lowers by 1 step every 0.4 seconds, regardless of the number of times you tap.

When the volume reaches the minimum, an alarm sounds.

For details on tap controls, refer to “[About tap controls](#)”.

#### Note

- You cannot adjust the volume with the headset when no music is playing.
- If the communication condition is poor, the Bluetooth device may malfunction in response to the operating procedure on the headset.
- The available operating procedures may vary depending on the connected device, the music software, or the app being used. In some cases, the device may function differently or may not work even if the above operating procedures described are performed.

---

#### Related Topic

- [About tap controls](#)

TP1002088441

5-071-247-11(1) Copyright 2026 Sony Corporation

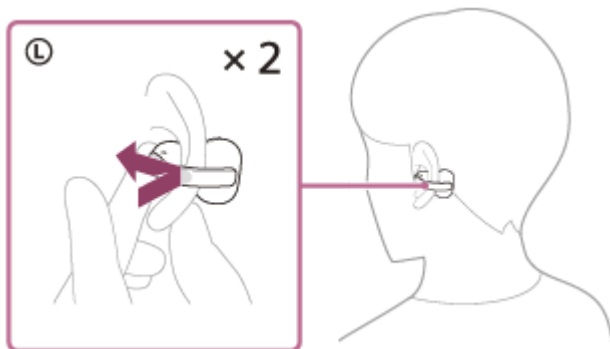
## Switching sound settings according to the content or usage scenario (listening mode)

When the headset is connected via Bluetooth, you can enjoy music in a listening mode suited to the playback content or usage scenario. Listening modes can be switched easily using the headset controls.

### 1 Put the headset units on your ears.

See "[Wearing the headset](#)".

### 2 Tap the left-side headset unit twice to switch the listening mode.



Each time the headset unit is tapped twice, the settings switch as follows.

You will hear a voice guidance and notification sound each time the setting is changed.

- Standard: A setting suitable for a wide range of contents and usage scenarios.
- Voice Boost: A setting to increase the voice volume in the content.
- Sound Leakage Reduction: A setting to reduce sound leakage to the surroundings.

#### Hint

- You can also switch the listening modes using the "Sound Connect" app.

#### Note

- The listening mode setting is maintained even after the headset is turned off. When the headset is turned on, you can enjoy the sound with the same setting.
- The listening mode setting is disabled during calls.
- If you change the settings using the "Change the tap operation function", the operation method may differ, and some functions may not be available.

## Receiving a call

You can talk on the phone hands-free via a Bluetooth connection on a smartphone that supports the following Bluetooth profiles.

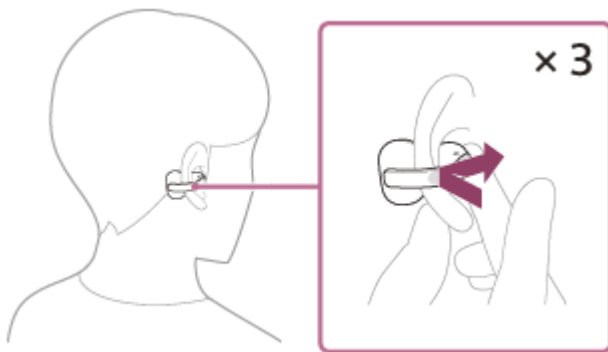
- HFP: Hands-free Profile
  - HSP: Headset Profile
- 
- If your smartphone supports both HFP and HSP, set it to HFP.
  - The operating procedure may vary depending on the smartphone. Refer to the operating instructions supplied with the smartphone.
  - Depending on the connected device or the application, the functions may not work properly even if you try to operate them with the headset.

## Ring tone

When you receive an incoming call, a ring tone will be heard from the headset.  
You will hear either of following ring tones, depending on your smartphone.

- Ring tone set on the headset
- Ring tone set on the smartphone
- Ring tone only for a Bluetooth connection set on the smartphone

- 1 Connect the headset to a smartphone via a Bluetooth connection beforehand.**
- 2 When you hear a ring tone, tap the left or right unit of the headset 3 times quickly with an interval of about 0.2 seconds to receive the call.**

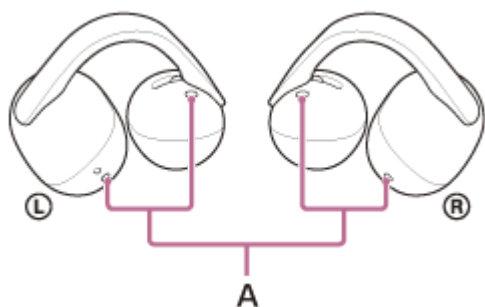


Sound will be heard from the headset.

When you receive an incoming call while listening to music, playback pauses automatically and a ring tone will be heard from the headset.

If playback is not paused, operate the headset to pause playback.

You can talk using the microphones (A) on the left and right headset units.



### If no ring tone is heard via the headset

The headset may not be connected with the smartphone over HFP or HSP. Check the connection status on the smartphone.

**3** Operate the smartphone to adjust the volume.

**4** When you finish talking, tap the left or right unit of the headset 3 times quickly with an interval of about 0.2 seconds to end the call.

If you received a call during music playback, music playback resumes automatically after ending the call.

For details on tap controls, refer to [“About tap controls”](#).

#### Hint

- When receiving a call by using a smartphone, some smartphones may receive a call on the phone instead of the headset. When using HFP connection, transfer the call to the headset by using your smartphone.
- The volume can also be adjusted on the “Sound Connect” app. The headset volume during a call and during music playback can be independently adjusted. Even if you change the volume during a call, the volume of music playback does not change.
- You can also enjoy hands-free calls even when you are using only one headset unit. When you receive an incoming call, answer the call with the headset unit you are using. If you remove the other headset unit from the charging case while you are talking with only one headset unit, you can talk with both headset units.

#### Note

- Depending on the connected device or playback application, playback may not pause even when you receive an incoming call while playing back music. When you received an incoming call while playing back music, playback may not resume automatically even if you finish the call.
- Use a smartphone at least 50 cm (19.68 in) away from the headset. Noise may result if the smartphone is too close to the headset.
- The volume during calls cannot be adjusted with the headset. Adjust the volume on the connected device or the “Sound Connect” app.
- When you are using only one headset unit, be sure to set the other headset unit into the charging case.
- Depending on the caller’s voice characteristics or the ambient environmental noises, the audio signal processing that is mounted on the headset may not work well and the call sound quality may be reduced.

#### Related Topic

- [Using the “Sound Connect” app](#)
- [Using only one headset unit](#)

- [About tap controls](#)
- [How to make a wireless connection to Bluetooth devices](#)
- [Making a call](#)
- [Functions for a phone call](#)

TP1002090575

5-071-247-11(1) Copyright 2026 Sony Corporation



## Making a call

You can talk on the phone hands-free via a Bluetooth connection on a smartphone that supports the following Bluetooth profiles.

- HFP: Hands-free Profile
  - HSP: Headset Profile
- 
- If your smartphone supports both HFP and HSP, set it to HFP.
  - The operating procedure may vary depending on the smartphone. Refer to the operating instructions supplied with the smartphone.
  - Depending on the connected device or the application, the functions may not work properly even if you try to operate them with the headset.

### 1 Connect the headset to a smartphone via a Bluetooth connection.

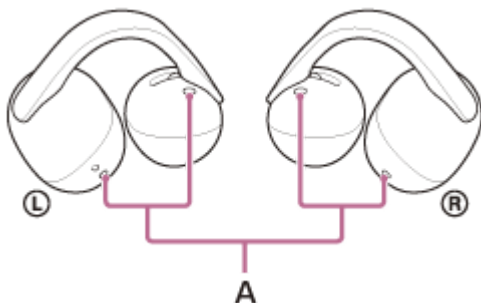
### 2 Operate your smartphone to make a call.

When you make a call, the dial tone is heard from the headset.

If you make a call while listening to music, playback pauses automatically.

If playback is not paused, operate the headset to pause playback.

You can talk using the microphones (A) on the left and right headset units.

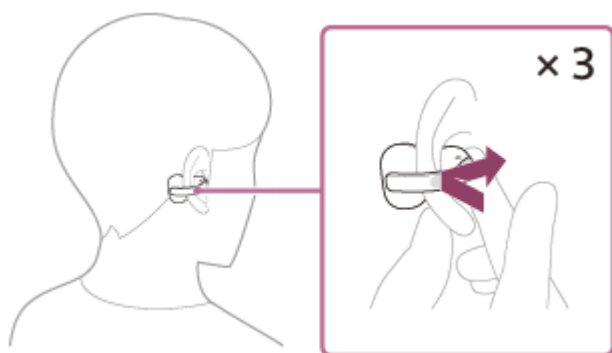


### If no dial tone is heard via the headset

Use your smartphone to transfer the call to the headset.

### 3 Operate the smartphone to adjust the volume.

### 4 When you finish talking, tap the left or right unit of the headset 3 times quickly with an interval of about 0.2 seconds to end the call.



If you made a call during music playback, music playback resumes automatically after ending the call.

For details on tap controls, refer to [“About tap controls”](#).

#### Hint

- The volume can also be adjusted on the “Sound Connect” app. The headset volume during a call and during music playback can be independently adjusted. Even if you change the volume during a call, the volume of music playback does not change.
- You can also enjoy hands-free calls even when you are using only one headset unit. If you remove the other headset unit from the charging case while you are talking with only one headset unit, you can talk with both headset units.

#### Note

- Depending on the connected device or playback application, when you make a call during music playback, playback may not resume automatically even after you finish the call.
- Use a smartphone at least 50 cm (19.68 in) away from the headset. Noise may result if the smartphone is too close to the headset.
- The volume during calls cannot be adjusted with the headset. Adjust the volume on the connected device or the “Sound Connect” app.
- When you are using only one headset unit, be sure to set the other headset unit into the charging case.
- Depending on the caller’s voice characteristics or the ambient environmental noises, the audio signal processing that is mounted on the headset may not work well and the call sound quality may be reduced.

#### Related Topic

- [Using the “Sound Connect” app](#)
- [Using only one headset unit](#)
- [About tap controls](#)
- [How to make a wireless connection to Bluetooth devices](#)
- [Receiving a call](#)
- [Functions for a phone call](#)

TP1002090559

## Functions for a phone call

The functions available during a call may vary depending on the profile supported by your smartphone. In addition, even if the profile is the same, the available functions may vary depending on the smartphone.

Depending on the connected device or the application, the functions may not work properly even if you try to operate them with the headset.

Refer to the operating instructions supplied with the smartphone.

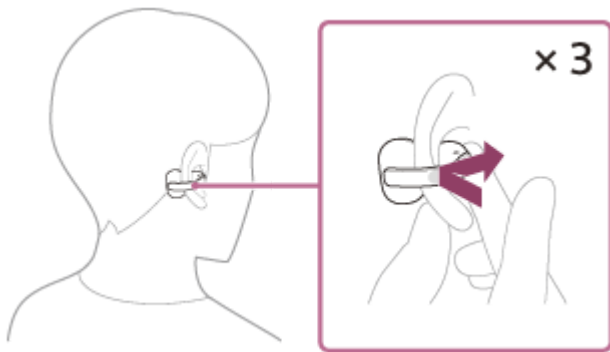
### When the supported profile is HFP (Hands-free Profile) or HSP (Headset Profile)

You can use either the left or right headset unit to perform the following operating procedures.

When using only one headset unit, operate the headset unit you are using.

#### Outgoing call

- Tap the headset unit 3 times quickly with an interval of about 0.2 seconds between taps to cancel an outgoing call.



#### Incoming call

- Tap the headset unit 3 times quickly with an interval of about 0.2 seconds between taps to answer a call.

#### During call

- Tap the headset unit 3 times quickly with an interval of about 0.2 seconds between taps to finish a call.

For details on tap controls, refer to "[About tap controls](#)".

#### Note

- When you are using only one headset unit, be sure to set the other headset unit into the charging case.

#### Related Topic

- [Using only one headset unit](#)
- [About tap controls](#)
- [Receiving a call](#)
- [Making a call](#)



## Making a video call on your computer

When you make a video call on your computer, you can talk wirelessly from your headset.

- 1 **Connect the headset to your computer via a Bluetooth connection.**
- 2 **Launch the video calling application on your computer.**
- 3 **Check the settings (\*) of the video calling application.**
  - When you make a video call on your computer, select calling connections (HFP/HSP). If you select music playback connections, a video call may not be available.
  - On the speaker settings, select calling connections [Headset (LinkBuds Clip Hands-Free)] (\*\*). When connecting to play music, select [Headphones (LinkBuds Clip Stereo)] (\*\*).
  - On the microphone settings, select calling connections [Headset (LinkBuds Clip Hands-Free)] (\*\*).
  - Depending on the video calling application you are using, calling connections [Headset (LinkBuds Clip Hands-Free)] (\*\*) or music playback connections [Headphones (LinkBuds Clip Stereo)] (\*\*) may not be selectable on the speaker or microphone settings, and only [LinkBuds Clip] may be displayed. If this is the case, select [LinkBuds Clip].
  - As for frequently asked questions and answers, refer to the customer support website.

(\*) Depending on the video calling application you are using, this function may not be available.

(\*\*) Names may vary according to the computer or the video calling application you are using.

### Hint

- When the settings of the video calling application cannot be checked or calling connections [Headset (LinkBuds Clip Hands-Free)] cannot be selected, select [Headset (LinkBuds Clip Hands-Free)] on the settings of your computer to make connections. See [“Connecting to a paired computer \(Windows 11\)”](#) or [“Connecting to a paired computer \(Mac\)”](#).

### Related Topic

- [How to make a wireless connection to Bluetooth devices](#)
- [Pairing and connecting with a computer \(Windows® 11\)](#)
- [Pairing and connecting with a computer \(Mac\)](#)
- [Connecting to a paired computer \(Windows 11\)](#)
- [Connecting to a paired computer \(Mac\)](#)
- [Disconnecting Bluetooth connection \(after use\)](#)

TP1002092368

## Using Google™ Gemini

May not be supported in some countries and regions.

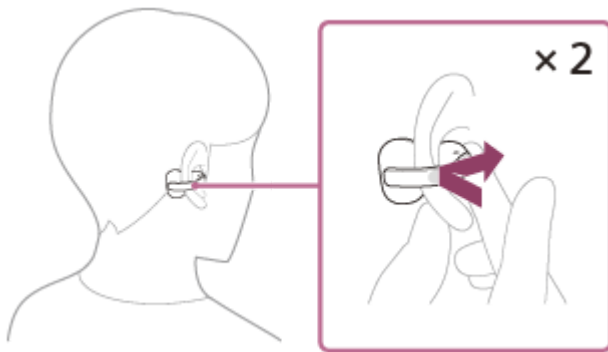
By linking with the Google Gemini feature on your smartphone, you can operate the smartphone by voice or perform a search while wearing the headset.

### 1 Open the “Sound Connect” app and set the function of either the left or right headset unit as Digital assistant.

The first time you use Google Gemini, make sure that Google Gemini is set as the primary assistant on the connected smartphone.

### 2 Operate the headset unit to which you assigned Digital assistant to use Digital assistant.

- Tap the headset unit twice quickly at an interval of about 0.2 seconds to start voice input.



For details on tap controls, refer to “[About tap controls](#)”.

For details, refer to the following website.

<https://support.google.com/gemini/answer/15456140>

### Compatible smartphones

Android 13 or later

For more information about Google Gemini, refer to the following.

- The operating instructions or support website for Android smartphones
- The Google Play Store website  
<https://support.google.com/gemini/>

### Hint

- Check or update the software version of the headset with the “Sound Connect” app.
- When Google Gemini is not available for reasons such as not being connected to the network, you will hear a voice guidance indicating unavailability from both units of the headset. When you are wearing only one unit of the headset, you will hear the voice guidance indicating unavailability from the headset unit you are wearing. Notifications may be displayed on the screen of the connected device, but service specifications may change without notice due to changes made by service providers.

### Note

- Google Gemini and the voice assist function (Google app) cannot be assigned to the headset at the same time.
- Google Gemini and the voice assist function (Siri) cannot be assigned to the headset at the same time.
- The function to operate the headset with Google Gemini depends on the specifications of Google Gemini.
- The specifications of Google Gemini are subject to change without notice.
- For details on the services provided by other companies such as Google Gemini, consult each service provider directly. Sony shall assume no responsibility for any problems such as misunderstandings related to the services provided by other companies.

---

### Related Topic

- [About tap controls](#)

TP1002090562

## Using Tencent Xiaowei

This feature is available for models designed for the Chinese mainland.

By using Tencent Xiaowei that comes with the smartphone, you can speak to the headset's microphone to operate the smartphone or perform a search.

### Compatible smartphones

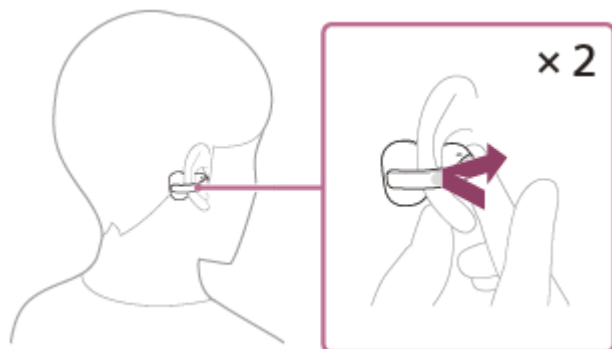
- A smartphone with Android 6.0 or later, or iOS 10 or later installed.
- The latest version of the Tencent Xiaowei app is required.

**1** Open the “Sound Connect” app and set the function of either the left or right headset unit as Tencent Xiaowei.

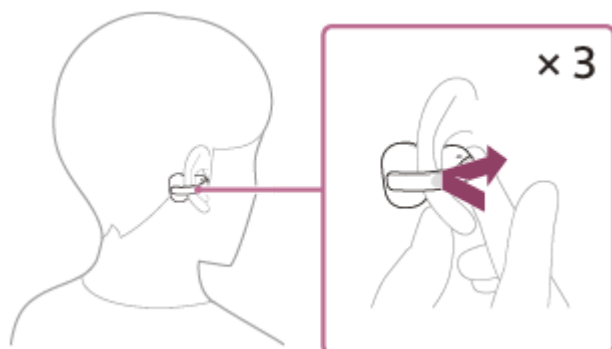
**2** Launch the Tencent Xiaowei app.

**3** Operate the headset unit to which you assigned Tencent Xiaowei to use the Tencent Xiaowei app.

- Tap the headset unit twice quickly with an interval of about 0.2 seconds to input a voice command.



- If there is no voice, it will be automatically canceled.
- Tap the headset unit twice quickly with an interval of about 0.2 seconds while Tencent Xiaowei is responding to cancel the response.
- Tap the headset unit 3 times quickly with an interval of about 0.2 seconds to use QQ Music Quick Access.



For details on tap controls, refer to “[About tap controls](#)”.

For details on Tencent Xiaowei, refer to the following website.



### Hint

- You can use Tencent Xiaowei when you are wearing only one unit to which Tencent Xiaowei is assigned on your ear. When Tencent Xiaowei is assigned to the headset and you are using only one headset unit, use the headset unit with Tencent Xiaowei assigned. Check the setting of the headset with the “Sound Connect” app.
- Check or update the software version of the headset with the “Sound Connect” app.
- When Tencent Xiaowei is not available for reasons such as not being connected to the network, you will hear a voice guidance indicating unavailability from both units of the headset. When you are wearing only one unit of the headset, you will hear the voice guidance indicating unavailability from the headset unit you are wearing. Notifications may be displayed on the screen of the connected device, but service specifications may change without notice due to changes made by service providers.

### Note

- Tencent Xiaowei and the voice assist function cannot be assigned to the headset at the same time.
- Tencent Xiaowei is only available in China.

---

### Related Topic

- [About tap controls](#)

TP1002090546

## Using the voice assist function (Google app)

By linking with the Google app on your Android smartphone, you can operate the Android smartphone by voice while wearing the headset.

### 1 Set the assist and voice input selection to the Google app.

On the Android smartphone, select the following menus.

[Settings] - [Apps & notifications] - [Advanced] - [Default apps] - [Assist & voice input]

Then, set [Assist app] to the Google app.

The above operating procedure is an example. For more details, refer to the operating instructions supplied with the Android smartphone.

The latest version of the Google app may be required.

Models for countries and regions excluding Chinese mainland:

For details on the Google app, refer to the operating instructions or the support website of the Android smartphone, or the Google Play store website.

Models for Chinese mainland:

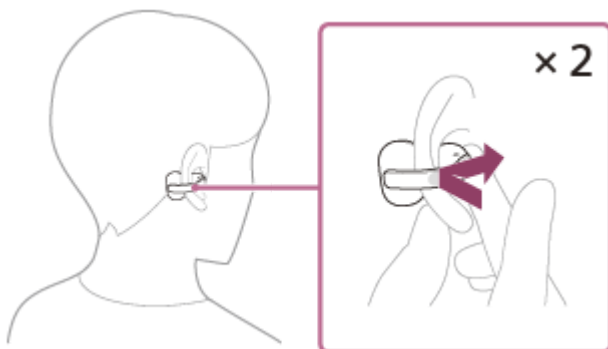
For details on the Google app, refer to the operating instructions or the support website of the Android smartphone.

The Google app may not be activated from the headset depending on specifications of the Android smartphone.

### 2 Put the headset units on your ears and connect the headset to the Android smartphone via a Bluetooth connection.

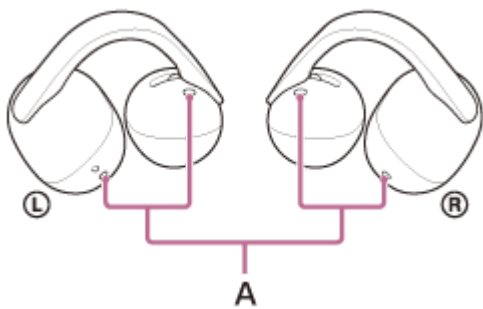
### 3 Open the "Sound Connect" app and set the function of either the left or right headset unit as [Voice Assist Function].

### 4 When the Android smartphone is in standby or playing music, tap the headset to which you assigned the voice assist function twice quickly with an interval of about 0.2 seconds.



The Google app is activated.

### 5 Talk to Google through the app using the headset's microphones (A).



For details on the apps which work with the Google app, refer to the operating instructions for the Android smartphone.

After launching the Google app, voice input will be disabled if no speech is recorded for a certain period of time.

For details on tap controls, refer to “[About tap controls](#)”.

#### Note

- The voice assist function (Google app) and Google Gemini cannot be assigned to the headset at the same time.
- The voice assist function (Google app) and Tencent Xiaowei/QQ Music cannot be assigned to the headset at the same time.
- The Google app may not be activated depending on specifications of the smartphone or application version.
- The Google app does not work when connected to a device not compatible with the voice assist function.

#### Related Topic

- [About tap controls](#)

TP1002090556

## Using the voice assist function (Siri)

By linking with Siri on your iPhone, you can operate the iPhone by voice while wearing the headset.

### 1 Activate Siri.

On an iPhone, select [Settings] - [Siri & Search].

Enable [Press Home for Siri] and [Allow Siri When Locked].

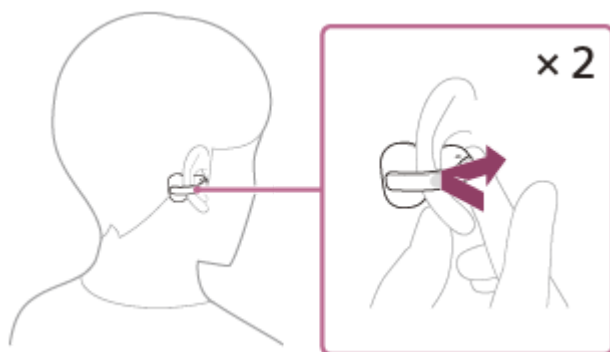
The above operating procedure is an example. For details, refer to the operating instructions supplied with the iPhone.

For details on Siri, refer to the operating instructions or support website of the iPhone.

### 2 Put the headset units on your ears and connect the headset to the iPhone via a Bluetooth connection.

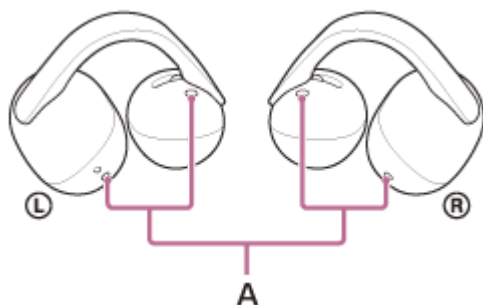
### 3 Open the "Sound Connect" app and set the function of either the left or right headset unit as [Voice Assist Function].

### 4 When the iPhone is in standby or playing music, tap the headset to which you assigned the voice assist function twice quickly with an interval of about 0.2 seconds.



Siri is activated.

### 5 Talk to Siri through the headset's microphones (A).



For details on the apps which work with Siri, refer to the operating instructions for the iPhone.

After activating Siri, Siri will be deactivated if no voice input is detected for a certain period of time.

The voice command can also be canceled. Tap the headset unit assigned with the voice assist function 3 times quickly with an interval of about 0.2 seconds.

For details on tap controls, refer to “[About tap controls](#)”.

#### Note

- The voice assist function (Siri) and Google Gemini cannot be assigned to the headset at the same time.
- The voice assist function (Siri) and Tencent Xiaowei/QQ Music cannot be assigned to the headset at the same time.
- Siri cannot be activated when you say “Hey Siri” even when the iPhone’s “Hey Siri” setting is enabled.

---

#### Related Topic

- [About tap controls](#)

TP1002090558

5-071-247-11(1) Copyright 2026 Sony Corporation

## Precautions

---

### On Bluetooth communications

- Bluetooth wireless technology is a short-range wireless technology that enables communication between digital devices, such as smartphones and computers. The maximum communication distance may vary depending on the presence of obstacles (people, metal objects, walls, etc.) or the electromagnetic environment.
- Depending on the Bluetooth device connected to the headset, the communication environment, and the surrounding conditions, noise or sound cut out may occur.
- The maximum communication distance of the headset is approximately 10 m (32.8 ft). The communication distance may vary depending on the surrounding environment.
- Microwaves emitting from a Bluetooth device may affect the operation of electronic medical devices. Turn off the headset and other Bluetooth devices in the following locations, as it may cause an accident:
  - in hospitals, near priority seating in trains, locations where inflammable gas is present, near automatic doors, or near fire alarms.
- When you use the headset on an airplane, follow flight crew directions. Radio waves may affect instruments, causing risk of accident due to malfunction.
- The audio playback on the headset may be delayed from that on the transmitting device, due to the characteristics of Bluetooth wireless technology. As a result, the sound may not be in sync with the image when viewing movies or playing games.
- The headset supports security functions that comply with the Bluetooth standard as a means of ensuring security during communication using Bluetooth wireless technology. However, depending on the configured settings and other factors, this security may not be sufficient. Be careful when communicating using Bluetooth wireless technology.
- Sony shall assume no responsibility for any damages or loss resulting from information leaks that occur when using Bluetooth communications.
- Bluetooth connections with all Bluetooth devices cannot be guaranteed.
  - Bluetooth devices connected with the headset must comply with the Bluetooth standard prescribed by Bluetooth SIG, Inc., and must be certified as compliant.
  - Even if a connected device complies with the Bluetooth standard described above, the connection may fail depending on the characteristics and specifications of the device. Additionally, differences in operation methods, display, or performance may occur.
  - When using the headset to perform hands-free talking on the phone, noise may occur depending on the connected device or the communication environment.
- Depending on the device to be connected, it may require some time to start communications.

### Note on temperature rise

- The temperature of the headset and the charging case may rise while charging or when using the headset for a long period of time. This is not a malfunction.

### Note on sound leakage

- When the volume is increased, sound may leak due to the structure of the driver unit part of the headset. Be careful not to raise the volume too much.

### Note on static electricity

- If you use the headset when the air is dry, you may experience mild tingling in your ears. This is not a malfunction of the headset, but is caused static electricity accumulated on your body. You can reduce the effect by wearing clothes made of natural materials that do not easily generate static electricity.

## Notes on wearing the headset

- Long-term use of the headset may cause symptoms such as itching and irritation in the ears.  
If you experience any of the above symptoms while the headset is in use, stop using it immediately. Then, consult a doctor, the Sony support contact, or your nearest Sony dealer.
- For long-term use, it is recommended that you remove the headset from your ears on a regular basis.

## Other notes

- The headset is a precision device, so do not drop it or subject it to strong shocks. This may cause deformation or damage, resulting in reduced performance.
- Depending on the signal conditions of your smartphone or the surrounding environment, you may not be able to use the headset.
- The Bluetooth function may not work with a mobile phone, depending on the signal conditions and the surrounding environment.
- Do not blow on the driver unit.
- If you experience discomfort while using the headset, stop using it immediately.
- The headset is not waterproof. If water or foreign matter enters the headset, this can result in burnout or malfunction. If water or foreign matter enters the headset, stop use immediately. Then, consult the Sony support contact or your nearest Sony dealer. In particular, be careful in the following cases.
  - When using the headset near a sink or liquid container  
Be careful that the headset does not fall into a sink or container filled with water.
  - When using the headset in the rain or snow, or in humid locations
  - When using the headset while you are perspiring  
If you touch the headset with wet hands, or put the headset in the pocket of a damp article of clothing, the headset may get wet.
- When the charging ports of the headset units or charging case get dirty, wipe them clean with a soft dry cloth.

## Cleaning the headset

- Dust and dirt on the exterior of the headset can be wiped off with pure water type wet wipes. Do not use the following items as they may damage the surface finish and lead to malfunction or breakage.
  - Wet wipes containing alcohol
  - Thinner
  - Benzine and other similar substances

## Do not use the headset units and charging case near medical devices

- Radio waves can affect cardiac pacemakers and medical devices. Do not use the headset and charging case in crowded places such as crowded trains or inside a medical institution.
- The headset units and charging case use magnets. These magnets may interfere with pacemakers, programmable shunt valves for hydrocephalus treatment, or other medical devices. Do not place the headset units and charging case close to persons who use such medical devices. Consult your doctor before using the headset if you use any such medical devices.

## Keep the headset units and charging case away from magnetic cards

- The headset units and charging case use magnets. If a magnetic card comes near the headset and charging case, the card magnet may be affected or become deactivated.

TP1002088471

## Supported codecs

---

A codec is an “audio coding algorithm” used when transmitting sound wirelessly via a Bluetooth connection. When the headset is connected using A2DP for music playback, it supports SBC and AAC.

- SBC

This is an abbreviation for Subband Codec.

SBC is the standard audio coding technology used in Bluetooth devices.

All Bluetooth devices support SBC.

- AAC

This is an abbreviation for Advanced Audio Coding.

AAC is mainly used in Apple products such as iPhone that can provide a higher sound quality than that of SBC.

When music in one of the above codecs is transmitted from a connected device, the headset switches to that codec automatically and plays back the music in the same codec.

If the connected device supports a codec of higher sound quality than SBC, you may need to set the device beforehand to enjoy music with the desired codec from the supported codecs.

Refer to the operating instructions supplied with the device regarding setting the codec.

TP1002090550



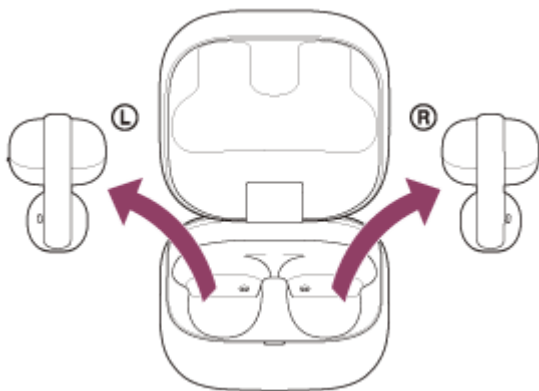
## How to keep the software up-to-date (for comfortable use of the headset)

Update the headset software to enjoy new functions and resolve certain issues. Update the headset software using the “Sound Connect” app.

For details on the latest headset software and how to update the software, refer to the information on the support website.

You can update the headset software in the following way.

### 1 Remove the headset units from the charging case.



The headset turns on automatically.

### 2 Update your headset software by following the on-screen instructions of the “Sound Connect” app.

#### Note

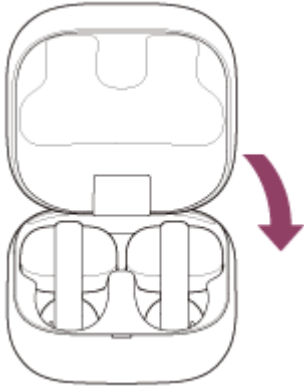
- Before performing an update, disconnect any other Bluetooth devices connected to the mobile device being used for the update. Software may not be updated when the mobile device is connected with other devices compatible with Bluetooth Low Energy (such as wearable devices or smart watches).
- Note the following if the update cannot be completed.
  - Close all the apps installed on the mobile device except the “Sound Connect” app.
  - Fully charge the headset and the mobile device.
  - Put the headset and the mobile device being used for the update as close to each other as possible before starting the update.
  - Do not start the update if there are wireless LAN devices or other Bluetooth devices nearby.
  - Turn off the power saving mode (\*) of your mobile device before updating the software.Depending on the OS version of your mobile device, the update may not be completed under the power saving mode.

(\*) Names may vary according to the mobile device you are using.

TP1002089844

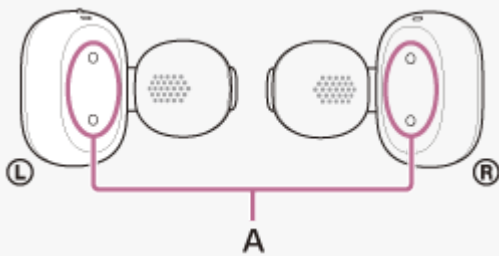
## When you have finished using the headset

When you have finished using the headset, be sure to set the headset units into the charging case. Close the charging case lid.



### Note

- If perspiration or water is left on the charging port, it may impair the ability to charge the headset. Immediately wipe off any perspiration or water on the charging port after use. When the charging ports on the headset units (A) or the charging ports on the charging case (B) become dirty, wipe them clean with a soft dry cloth.



- Also see the [“Maintenance”](#), [“To prevent burning or malfunction due to getting wet”](#), and [“When the headset units or charging case gets wet”](#) sections.

### Related Topic

- [Maintenance](#)

- To prevent burning or malfunction due to getting wet
- When the headset units or charging case gets wet

TP1002090568

5-071-247-11(1) Copyright 2026 Sony Corporation

## Maintenance

Perform regular maintenance by following the procedures below.

### 1 Clean the headset.

#### Cleaning the headset units

Dust and dirt on the exterior of the headset can be wiped off with pure water type wet wipes. Do not use wet wipes such as those containing alcohol, thinner, or benzene as they may damage the finish on the surface of the headset or cause other damages.

Use a soft dry cloth to wipe off any water that gets on the headset units.

Do not allow the headset to remain with water droplets attached in a cold environment as the water may freeze.

#### Cleaning the charging ports

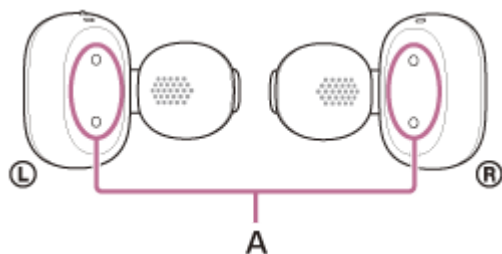
If foreign matter or moisture, such as sweat, is left on the charging ports (A) of the headset or the charging ports (B) of the charging case, charging port corrosion may occur and prevent charging.

When you have finished using the headset, make sure to gently clean the charging ports with a soft dry cloth or cotton swab.

When the headset cannot be charged, it may help to try thoroughly cleaning the charging ports.

#### Charging ports that need maintenance

- Headset



- Charging case



#### Note

- Do not use an air duster or similar products to remove dust or debris.  
Dust and other debris may enter the sound output holes and cause malfunction.

### Cleaning the driver unit part

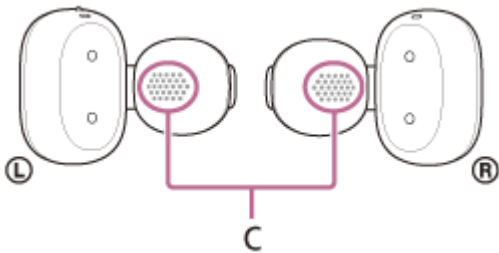
If foreign material such as earwax becomes attached to the sound output hole (C), the sound may become muffled or difficult to hear.

To prevent foreign material such as earwax from attaching, regularly clean using one of the following methods.

- Tissue
- Pure water wet wipes
- Cloth moistened with water and wrung out tightly

If dirt is already lodged in the sound output hole (C) and cannot be removed using the above methods, use a clean, soft brush. When using a brush, gently sweep the surface to remove dirt.

Do not use wet wipes containing alcohol, thinner, benzene, etc. as they may cause malfunction or damage.



#### Note

- To prevent damage to internal components, do not insert the brush deeply into the hole.
- Do not push dirt further into the sound output hole.

### Cleaning the holes of the charging case

Clean the holes (D) where the earcuff body (large) fits with a cotton swab, etc.



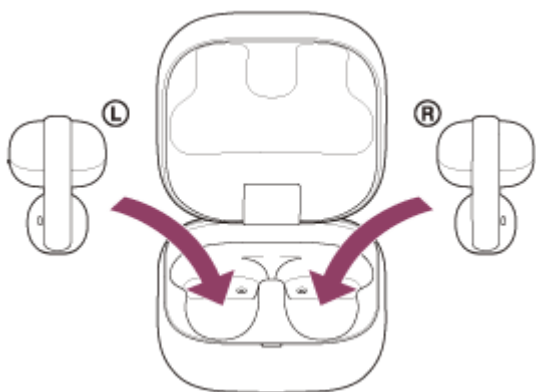
### Drying the headset

After cleaning is complete, leave the headset to dry thoroughly at room temperature.

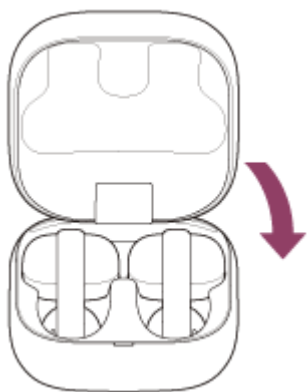


## 2 Set the headset in the charging case.

After maintenance as well as after cleaning and drying the headset, be sure to set the headset units in the charging case.



Be sure to close the charging case lid.



TP1002093403

## To prevent burning or malfunction due to getting wet

### Be sure to clean after use

Do not charge the headset when there is liquid such as water or sweat, or foreign matter such as dust on the USB Type-C port of the charging case or charging port of the headset. Doing so may result in accidents such as burns or serious injury due to fire, electric shock, overheating, smoke, or ignition.

Avoid the following situations and be careful not to expose the headset units or charging case to moisture or dirt.

If the headset units or charging case gets wet or dirty, see [“When the headset units or charging case gets wet”](#) and clean them as described before use.

- Touching the headset units or charging case without drying wet hands after doing housework in a kitchen or washing your hands in a washroom.



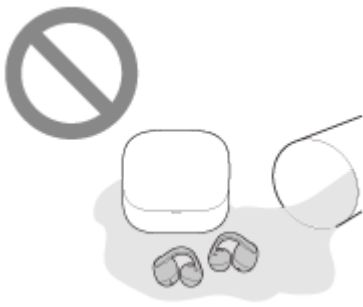
- Putting the headset in the chest pocket of a damp article of clothing.



- Putting the headset in a bag with a cold PET bottle.



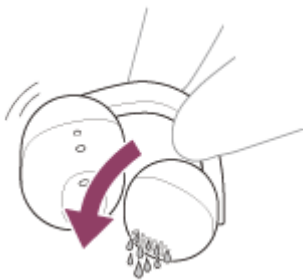
- Spilling a drink while eating or drinking.



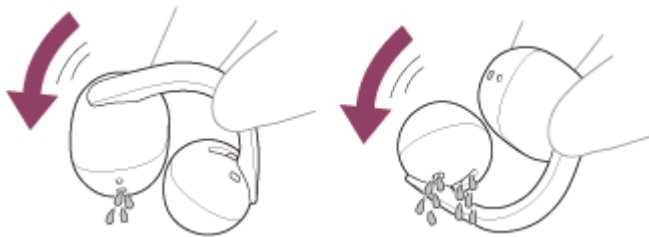
## To protect the headset units and charging case from damage

Carefully note the precautions below to ensure proper use of the headset.

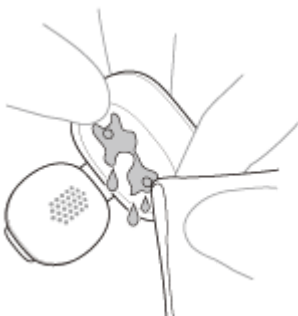
- Do not force water onto the sound output of the headset.
- Do not drop the headset into water or use it underwater.
- In cold regions, there is a risk of freezing. Be sure to wipe off any water droplets after use.
- Do not place the headset in water or use it in a humid place such as a bathroom.
- When the headset units get wet,
  1. Use a soft dry cloth to wipe off any water that gets on the headset units.
  2. Turn the sound output part downward and gently tap it about 10 times on a dry cloth or similar material to remove any water collected inside.



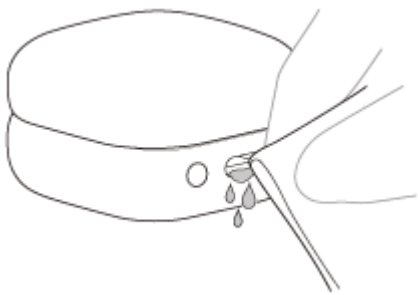
3. Turn the microphone hole or air hole part downward and gently tap it about 10 times on a dry cloth or similar material to remove any water collected inside.



4. Avoid putting the headset into the charging case and dry it thoroughly at room temperature.
- If the headset units and charging case are charged while they are wet with sweat or other liquids, the charging ports will corrode. Before charging, wipe off any moisture with a soft dry cloth and leave to dry at room temperature. Repairs in the case of malfunction due to negligence are not covered by the free warranty.







- Do not wash pants or shirts with the headset units or charging case left in the pockets.



- If the headset is cracked or deformed, refrain from using the headset near water, or consult the Sony support contact or your nearest Sony dealer.

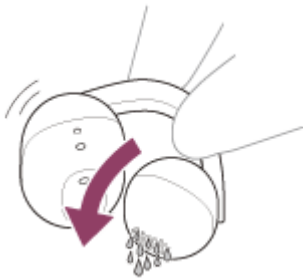
TP1002091922

5-071-247-11(1) Copyright 2026 Sony Corporation

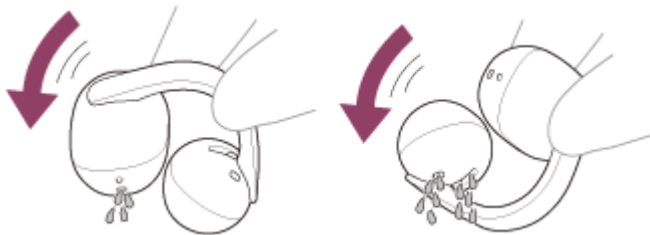
## When the headset units or charging case gets wet

### When the headset units get wet

1. Use a soft dry cloth to wipe off any water that gets on the headset units.
2. Turn the sound output part downward and gently tap it about 10 times on a dry cloth or similar material to remove any water collected inside.



3. Turn the microphone hole or air hole part downward and gently tap it about 10 times on a dry cloth or similar material to remove any water collected inside.



4. Avoid putting the headset into the charging case and dry it thoroughly at room temperature.
  - If the headset units are charged while they are wet with water or sweat, the charging ports will corrode. Before charging, wipe off any moisture with a soft dry cloth and leave to dry at room temperature. Repairs in the case of malfunction due to negligence are not covered by the free warranty.



### On water resistant performance of the headset

- The charging case is not water resistant.
- The headset complies with IPX4 under IEC 60529 "Degrees of Protection Provided by Enclosures (IP Code)" for "Protection Against Water Ingress". The headset cannot be used in water. Unless the headset is used correctly, water may get into the headset and cause fire, electrocution, or malfunctions.

Note the following cautions carefully and use the headset correctly.

IPX4: Protected against water splashing from any direction.

- The inside of the sound output parts, air holes, and microphone parts on the headset are not completely watertight. If any water droplets are left inside the sound output parts, air holes or microphone parts on the headset, the following issues may occur temporarily. However, they are not malfunctions.
  - Sounds become difficult to hear.
  - Unusual sounds are heard.
  - Voices during phone calls become difficult to hear.

### Liquids that the water resistant performance specifications of the headset apply to

Applicable:	Fresh water, tap water, perspiration
Not applicable:	Liquids other than those listed above For example: soapy water, detergent water, water with bath agents, shampoo, hot spring water, hot water, pool water, seawater, and similar substances.

The water resistant performance of the headset is based on measurements performed by Sony under the conditions described above. Note that malfunctions resulting from water immersion caused by customer misuse are not covered by the warranty.

TP1002089857

5-071-247-11(1) Copyright 2026 Sony Corporation

## Licenses

---

- This product contains software that Sony uses under a licensing agreement with the owner of its copyright. We are obligated to announce the contents of the agreement to customers under requirement by the owner of copyright for the software. Please access the following URL and read the contents of the license.  
<https://rd1.sony.net/help/mdr/sl/26/>
- Use of the Made for Apple badge means that an accessory has been designed to connect specifically to the Apple product(s) identified in the badge and has been certified by the developer to meet Apple performance standards. Apple is not responsible for the operation of this device or its compliance with safety and regulatory standards.
- Network services, content and the (operating system and) software of this product may be subject to individual terms and conditions and changed, interrupted or discontinued at any time and may require fees, registration and credit card information.

TP1002090564

## Trademarks

---

- Google, Android, Gemini and Google Play are trademarks of Google LLC.
- Apple, iPhone, macOS, Mac and Siri are trademarks of Apple Inc., registered in the U.S. and other countries and regions.
- App Store is a service mark of Apple Inc., registered in the U.S. and other countries and regions.
- IOS is a trademark or registered trademark of Cisco in the U.S. and other countries and is used under license.
- Microsoft and Windows are registered trademarks or trademarks of Microsoft Corporation in the United States and/or other countries.
- The Bluetooth® word mark and logos are registered trademarks owned by Bluetooth SIG, Inc. and any use of such marks by Sony Group Corporation and its subsidiaries is under license.
- USB Type-C® and USB-C® are registered trademarks of USB Implementers Forum.
- DSEE is a trademark or registered trademark of Sony Group Corporation or its affiliates.
- All other trademarks and registered trademarks are trademarks or registered trademarks of their respective holders. In this manual, ™ and ® marks are not specified.

TP1002088489

## Troubleshooting

If you have any problems, please follow the process below.

**1. Set the headset units into the charging case, close the charging case lid once, then open it again and remove the headset units from the charging case.**



**2. Restart the device being connected such as your computer or smartphone.**



**3. Access the Sony support site from the menu of the “Sound Connect” app to search for the cause and solution of the issue, or check the support site below.**  
<https://www.sony.net/support/WF-LC900/>



**4. Reset the headset.**



**5. Initialize the headset.**



**6. Should any problems persist, consult the Sony support contact below or your nearest Sony dealer.**  
<https://www.sony.net/support-contact>

### Related Topic

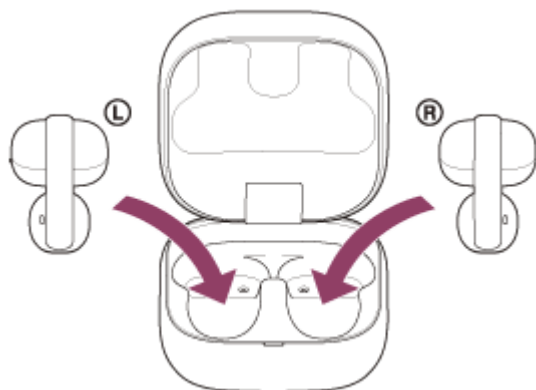
- [Charging](#)
- [Resetting the headset](#)
- [Initializing the headset to restore factory settings](#)

## Resetting the headset

If the headset cannot be turned on or cannot be operated even when it is turned on, reset the headset.

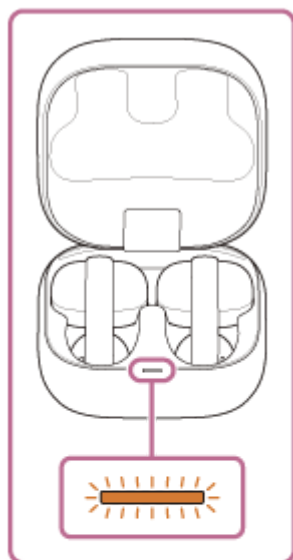
### 1 Set the headset units into the charging case.

Leave the charging case lid open.



### 2 Press and hold the reset button on the back of the charging case for about 20 seconds or more.

After about 15 seconds, the indicator on the charging case flashes in orange for about 5 seconds.



Then, the indicator on the charging case turns off and the headset will be reset.

### Note

- Do not release your finger from the reset button on the charging case while the indicator is flashing in orange. If you release your finger, the headset will be initialized.

### 3 Check that the indicator turns off and then release your finger.

The pairing information and other settings are retained.

If the headset does not operate correctly even after resetting, initialize the headset to restore factory settings.

### About the instruction manual video

Watch the video for how to reset. No audio explanation is available.

Models for countries and regions excluding Chinese mainland and Japan:

[https://rd1.sony.net/help/mdr/mov0098/h\\_zz/](https://rd1.sony.net/help/mdr/mov0098/h_zz/)

Models for Chinese mainland:

<https://rd1.sony.net/help/mdr/mov0098/zh-cn/>

Models for Japan:

<https://rd1.sony.net/help/mdr/mov0098/ja/>

---

### Related Topic

- [Initializing the headset to restore factory settings](#)

TP1002092366

5-071-247-11(1) Copyright 2026 Sony Corporation

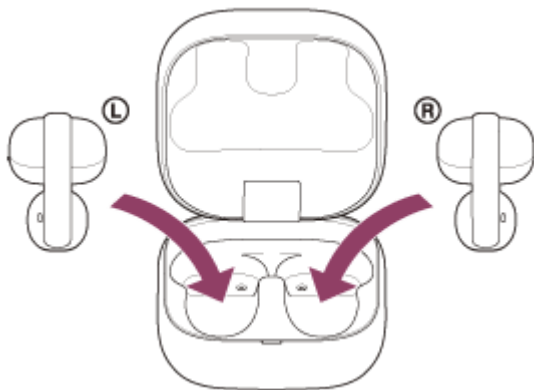


## Initializing the headset to restore factory settings

If the headset does not operate correctly even after resetting, initialize the headset.

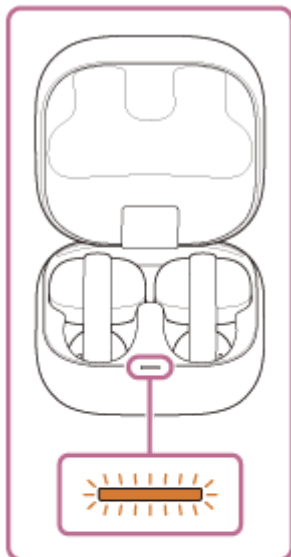
### 1 Set the headset units into the charging case.

Leave the charging case lid open.



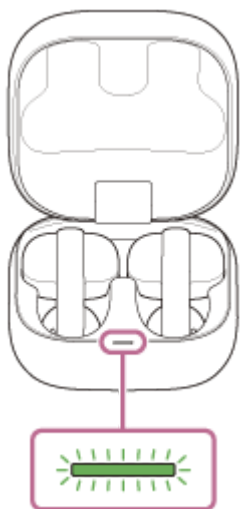
### 2 Press and hold the initialize button on the back of the charging case for about 15 seconds or more.

After about 15 seconds, the indicator on the charging case flashes in orange for about 5 seconds.



### 3 Release your finger within 5 seconds after the indicator on the charging case starts flashing in orange.

When the initializing is complete, the indicator on the charging case flashes in green 4 times.



This operating procedure resets the volume settings and other settings to the factory settings and deletes all pairing information. In this case, delete the pairing information for the headset from the connected device and then pair them again.

If the headset does not operate correctly even after initializing, consult the Sony support contact or your nearest Sony dealer.

### About the instruction manual video

Watch the video for how to initialize. No audio explanation is available.

Models for countries and regions excluding Chinese mainland and Japan:

[https://rd1.sony.net/help/mdr/mov0099/h\\_zz/](https://rd1.sony.net/help/mdr/mov0099/h_zz/)

Models for Chinese mainland:

<https://rd1.sony.net/help/mdr/mov0099/zh-cn/>

Models for Japan:

<https://rd1.sony.net/help/mdr/mov0099/ja/>

#### Note

- When the remaining battery charge of the charging case is not sufficient, the headset will not start initializing. Charge the charging case.
- If the indicator on the charging case does not flash in green 4 times after performing step 3, the headset has not been initialized. Try again from step 2.
- If you have updated the software after purchasing the headset, the software is retained updated even if you initialize the headset.
- When you initialize the headset to restore to the factory settings after you change the language of the voice guidance, the language will not return to the factory settings.

TP1002092365

Wireless Stereo Headset  
LinkBuds Clip

## Specifications

---

### Headset

#### Power source:

DC 5 V (Using a commercially available USB AC Adaptor)  
Using built-in lithium-ion batteries (Product Operation Power: DC 3.85 V)

#### Charging time:

Approx. 1.5 hours (Headset)  
Approx. 3 hours (Charging case)

#### Note

- Charging hours may be different depending on the conditions of use.

#### Charging temperature:

5 °C to 35 °C (41 °F to 95 °F)

#### Operating temperature:

0 °C to 40 °C (32 °F to 104 °F)

#### Mass:

Approx. 6.4 g × 2 (0.23 oz × 2) (Headset)  
Approx. 42 g (1.48 oz) (Charging case)

### Communication specification

#### Communication system:

Bluetooth

Design and specifications are subject to change without notice.

### Compatible iPhone models

iPhone 16 Pro Max  
iPhone 16 Pro  
iPhone 16 Plus  
iPhone 16  
iPhone 15 Pro Max  
iPhone 15 Pro  
iPhone 15 Plus  
iPhone 15  
iPhone 14 Pro Max  
iPhone 14 Pro  
iPhone 14 Plus  
iPhone 14  
iPhone SE (3rd generation)  
iPhone 13 Pro Max

iPhone 13 Pro  
iPhone 13  
iPhone 13 mini  
iPhone 12 Pro Max  
iPhone 12 Pro  
iPhone 12  
iPhone 12 mini  
iPhone SE (2nd generation)  
iPhone 11 Pro Max  
iPhone 11 Pro  
iPhone 11  
iPhone XS Max  
iPhone XS  
iPhone XR

(As of September 2025)

Depending on the iOS supported by the above models, the “Sound Connect” app may not be usable.

---

## Related Topic

- [Supported codecs](#)

TP1002092364

5-071-247-11(1) Copyright 2026 Sony Corporation