

The Help Guide describes the operating procedures for the Virtual Webcam Driver for Remote Camera (VWD 1.2) (hereinafter referred to as the “software”).

[Overview](#)

[Operating Environment](#)

[Getting Ready](#)

Usage

[Configuring Camera Settings](#)

[Installing the Software](#)

[Screen Configuration](#)

[Registering Cameras](#)

[Using a Registered Camera with a Web Conferencing Tool](#)

Troubleshooting

[Status List](#)

[Error Messages](#)

[Frequently Asked Questions](#)

[Open Source Software License \(OSS\)](#)

[Other](#)

Overview

This software is an application for installation and use on a computer. The software allows you to use an RTSP stream received from a Sony network camera in a computer application (such as a web conferencing tool).

Operating Environment

This topic describes the computers and cameras supported by this software.

Computer

- Supported operating system
 - Windows 10/11 64-bit
 - macOS 11/12/13
- CPU: Intel Core 8th generation (Coffee Lake) or later (recommended)
- Memory: 8 GB or higher (recommended)
- Ethernet port for receiving RTSP stream
- Monitor with 1366×768 or higher resolution

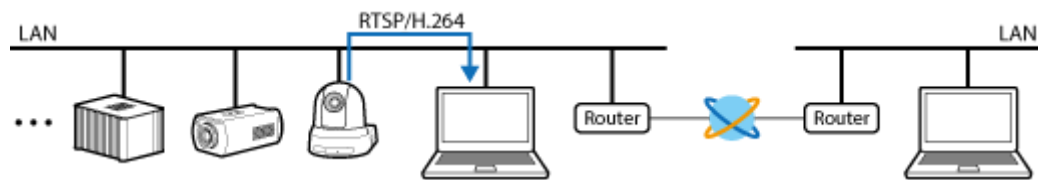
Camera (including Edge Analytics Appliance)

- BRC-X400/X401
- SRG-A40/A12/X400/X402/201M2/X120/HD1M2/XB25/XP1
- REA-C1000
- ILME-FR7

Note

- BRC-X401 and SRG-X402/201M2/HD1M2 are China models.

Getting Ready



1 Configure camera settings.

For details, see "[Configuring Camera Settings.](#)"

2 Install the software on a computer.

For details, see "[Installing the Software.](#)"

3 Register cameras in the software.

For details, see "[Registering Cameras.](#)"

4 Use registered cameras.

For details, see "[Using a Registered Camera with a Web Conferencing Tool.](#)"

Configuring Camera Settings

This topic describes the settings required for using cameras with the software.

Camera settings are configured by accessing the camera from a web browser and displaying the setup menu.

Note

- See the camera manual for instructions on how to operate the camera.
- For each setup item <n>, select the codec number you intend to use in this software.

For BRC-X400/X401 or SRG-X400/X402/201M2/X120/HD1M2

Note

- BRC-X401 and SRG-X402/201M2/HD1M2 are China models.

Required settings

Menu	Tab	Item	Options
Icon in the top right of the live viewer screen			Power on
[Streaming]	[Streaming]	[Streaming mode] ^{*1}	[RTSP] ^{*1}
[Video]	[Video codec]	[Image <n>] > [Codec <n>]	[H.264]
[Security]	[SSL]	[SSL] > [Function]	[Disable] or [Enable (Allow HTTP connection for some clients)] ^{*2}

^{*1} For cameras running v2.1 and earlier, place a check mark in [RTSP setting] > [Enable]

^{*2} BRC-X400 and SRG-X400/X120 only

Recommended settings for web conferencing tools

Menu	Tab	Item	Options
[Video]	[Video codec]	[Image <n>] > [Size <n>]	[1280×720]
[Video]	[Video codec]	[Image <n>] > [Frame rate <n>]	[30]
[Audio]	[Audio]	[Send] > [Enable]	On

For SRG-XB25/XP1

Required settings

Menu	Tab	Item	Options
Icon in the top right of the live viewer screen			Power on

Menu	Tab	Item	Options
[Streaming]	[Streaming]	[Unicast streaming] > [Enable]	On
[Video]	[Video codec]	[Image <n>] > [Image codec <n>]*	[H.264]

* Select [Image codec 2] or [Image codec 3].

Recommended settings for web conferencing tools

Menu	Tab	Item	Options
[Video]	[Video codec]	[Image <n>] > [Size <n>]	[1280×720]
[Video]	[Video codec]	[Image <n>] > [Frame rate <n>]	[29.97]
[Audio]	[Audio]	[Send] > [Enable]	On

For REA-C1000

Required settings

Menu	Tab	Item	Options
Run the application.			
[Streaming]	[Streaming]	[Streaming Service]	[RTSP Server]
[Security]	[SSL]	[SSL Function]	[Disable] or [Enable (Allow HTTP connection for some clients)]

Recommended settings for web conferencing tools

Menu	Tab	Item	Options
[Streaming]	[Codec]	[Streaming Output <n>]	[HDMI OUT 1] or [HDMI OUT 2]*
[Streaming]	[Codec]	[Image Size <n>]	[1280×720]
[Streaming]	[Codec]	[Frame rate <n>]	[29.97p]
[Audio]	–	[Send]	[Enable]

* Select according to the application being used.
For details about the image output destination, refer to the REA-C1000 manual.

For SRG-A40/A12 or ILME-FR7

Required settings

Menu	Tab	Item	Options
Power switch at the top of the live viewer screen			Power on
[Stream]	[Streaming]	[Stream Setting] > [Setting]	[RTSP]
[Stream]	[Video Stream]	[Video Stream <n>] > [Codec <n>]	[H.264]

Menu	Tab	Item	Options
SRG-A40/A12: [Security] ILME-FR7: [Network]	[SSL]	[SSL] > [Function]	[Disable] or [Enable (Allow HTTP connection for some clients)]

Recommended settings for web conferencing tools

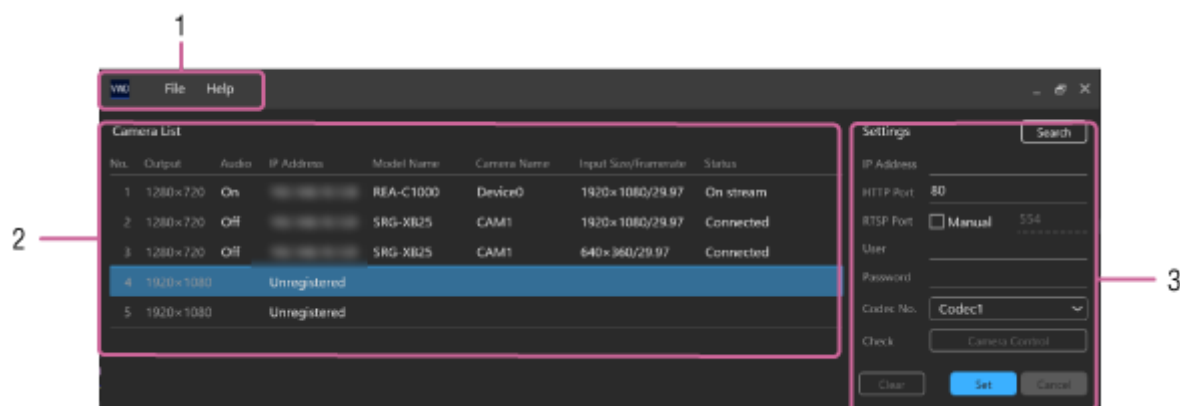
Menu	Tab	Item	Options
[Stream]	[Video Stream]	[Video Stream <n>] > [Size <n>]	[1280×720]
[Stream]	[Video Stream]	[Video Stream <n>] > [Frame Rate <n>]	[30]
[Stream]	[Audio Stream]	[Audio Stream] > [Setting]	On

Installing the Software

Installers are available for Windows and for macOS. Download the installer according to your operating environment. Launch the downloaded installer and follow the procedure to install the software.

Screen Configuration

Main window



1. Menu bar

- **[File]**
 - **[Exit]**: Exit this software.
 - **[Delete All Settings]**: Delete the configuration file saved by the software.
- **[Help]**
 - **[Help]**: Open the Help for the software in a web browser.
 - **[About]**: Display the version information.

2. [Camera List]

Displays the information about the cameras registered in the software. Select and double-click a camera to open the setup screen of the camera in a web browser. You can also right-click a camera and select [Delete] to delete a registered camera.

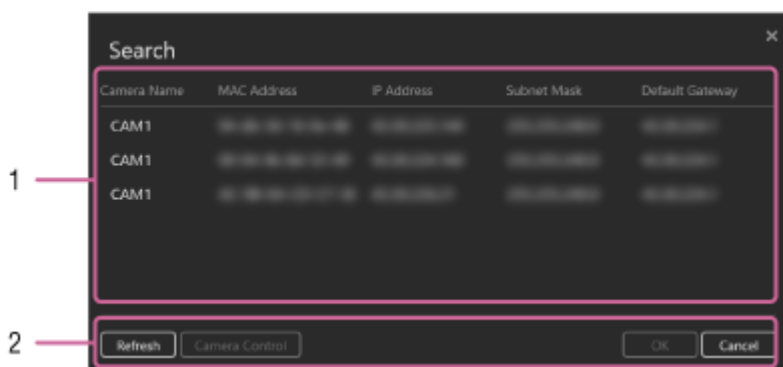
- **[Output]**: Displays the output image size. The size is set to 1280×720 (fixed) for No. 1 to No. 3, and to 1920×1080 (fixed) for No. 4 and No. 5.
- **[Audio]**: Displays the camera audio output status ([On]/[Off]/[Mute]). When using macOS, [Mute] is displayed only when another user is logged in and using this software on the same computer.
- **[IP Address]**: Displays the IP address that was configured when the camera was registered. If an address is not set, "Unregistered" is displayed.
- **[Model Name]**: Displays the model name acquired from the camera. If the IP address is not set or the model name cannot be acquired from the camera, this field is blank.
- **[Camera Name]**: Displays the camera name acquired from the camera. You can open the setup menu of the camera in a web browser and change the setting. If the IP address is not set or the camera name cannot be acquired from the camera, this field is blank.
- **[Input Size/Framerate]**: Displays the image size and frame rate acquired from the camera. If the IP address is not set, this field is blank.
- **[Status]**: Displays the camera connection status. If the IP address is not set, this field is blank.
For details, see "[Status List](#)."

3. [Settings]

This is used to configure cameras registered in the software. Each item displays the settings for the camera in the selected row in [Camera List].

- **[Search] button:** Opens the [Search] window.
- **[IP Address]:** Enter the IP address for the camera you want to register. When a camera is selected in the [Search] window, the IP address of the selected camera is entered automatically.
- **[HTTP Port]:** Enter the HTTP port number used to connect to the camera.
- **[RTSP Port]:** Enter the RTSP port number used to connect to the camera.
If you place a check mark in [Manual], enter the RTSP port number in the entry field.
If you do not place a check mark in [Manual], the RTSP server port number acquired from the camera is displayed in the entry field.
- **[User]:** Enter a user name (from among the user names registered in the camera beforehand) for use with this software.
- **[Password]:** Enter the password for the camera user name entered in [User].
- **[Codec No.]:** Select a codec number. If “Codec1” is selected for an SRG-XB25/XP1 camera, it will automatically be changed to “Codec2” upon registration. If “Codec3” is selected for an REA-C1000/SRG-A12/SRG-A40/ILME-FR7 camera, it will automatically be changed to “Codec1” upon registration.
- **[Check]:** Pressing the [Camera Control] button will display the setup screen of the camera in a web browser. This is only enabled if the camera IP address is set. You can also select and double-click the camera in [Camera List] to display the setup screen of the camera in a web browser.
- **[Clear] button:** Resets all items in the [Settings] area to default values. If you want to delete a registered camera, first clear all settings to default values and then press the [Set] button and confirm. You can also select and right-click a camera in [Camera List] and select [Delete] to delete the camera.
- **[Set] button:** Registers the settings configured in the [Settings] area for the camera.
- **[Cancel] button:** Cancels the changes made in the [Settings] area and returns to the current values.

[Search] window



1. Search results display area

Detects cameras supported by this software using the network camera IP Setup Protocol and displays the information for each camera.

Click [Camera Name] to sort the list display in ascending or descending order.

Double-click a displayed camera to copy the camera IP address to the [Settings] area of the main window and close the [Search] window.

2. Button area

- **[Refresh] button:** Conducts a camera search again and updates the details in the search results display area.
- **[Camera Control] button:** Displays the setup screen of the camera selected in the search results display area in a web browser.
- **[OK] button:** Copies the IP address of the camera selected in the search results display area to the [Settings] area of the main window, and closes [Search] window.
- **[Cancel] button:** Closes the [Search] window.

Registering Cameras

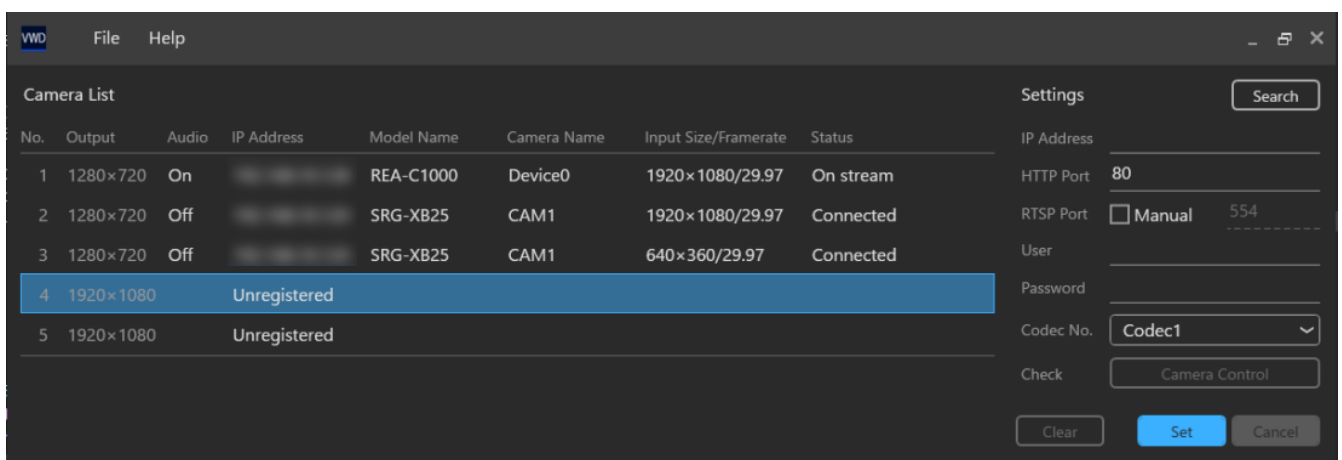
Install the software and configure camera settings beforehand.

When registering a camera in the software, you can use a Sony network camera RTSP stream as a virtual USB device.

1 Double-click “Virtual Webcam Driver for Remote Camera.”

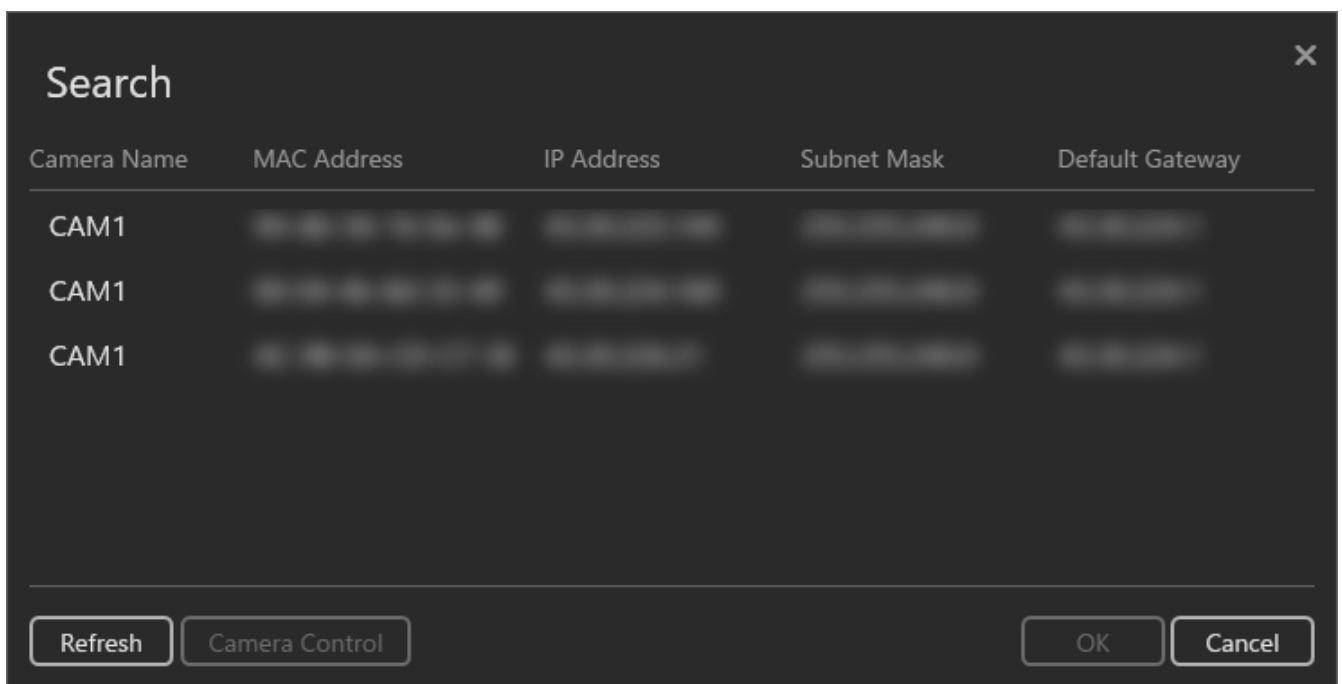
The software launches.

2 Select a camera you want to register in [Camera List].



3 Enter the information for the camera you want to register in the [Settings] area.

1. To search for a camera and automatically set the IP address using the software, click the [Search] button.
2. When the [Search] window appears, select the camera you want to register and click [OK].



4 Click [Set].

The camera is registered using the configured settings.

To register multiple cameras, repeat the above procedure for the cameras you want to register.

5 Exit the software.

When the software and cameras are on different network segments

If the computer on which this software is installed and the cameras you want to register are connected to different network segments, use NAPT (Network Address Port Translator) to connect the software and cameras.

In this case, a check mark must be placed in [Manual] for [RTSP Port] and a value entered manually.

In each of the [IP Address], [HTTP Port], and [RTSP Port] fields, set values as viewed from the network to which the computer running this software is connected.

Note

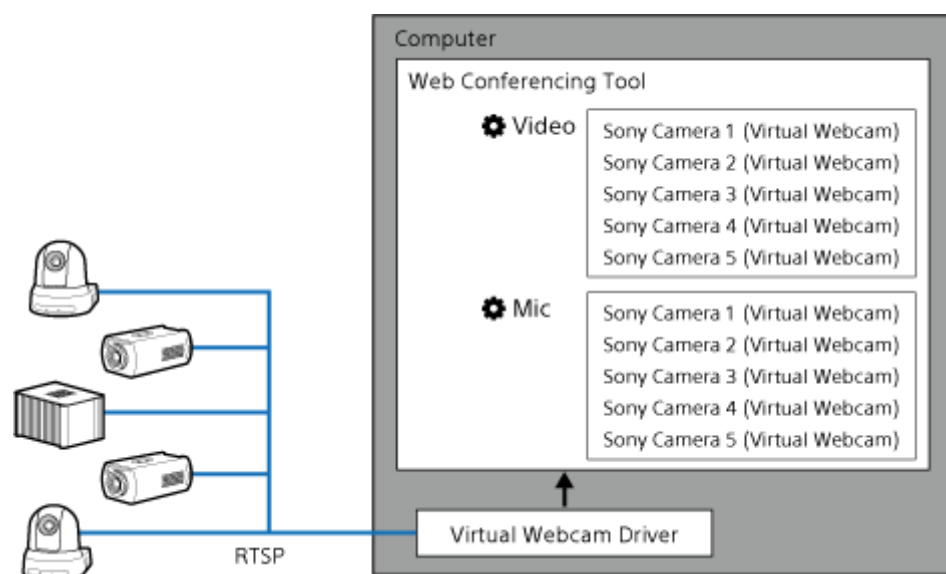
- This software cannot automatically obtain IP addresses and port numbers translated using NAPT. For this reason, place a check mark in [Manual] and set [RTSP Port] manually. If you configure settings without a check mark in [Manual], the RTSP stream from the camera cannot be acquired using this software.

Using a Registered Camera with a Web Conferencing Tool

Cameras registered in the software are recognized by the computer as virtual USB devices “Sony Camera 1 (Virtual Webcam)” to “Sony Camera 5 (Virtual Webcam).” Once a camera is registered, it can subsequently be used without registering it again.

Names 1 to 5 correspond to the cameras registered in the rows in [Camera List] in the software.

To use one of these cameras, select a camera from “Sony Camera 1 (Virtual Webcam)” to “Sony Camera 5 (Virtual Webcam)” in the web conferencing tool.



Status List

This topic describes information displayed in the [Status] field in [Camera List].

- **[Connected]**
Communication with cameras is possible and the RTSP stream can be acquired from the camera.
- **[On stream]**
The camera RTSP stream is being received and the image is being output to a web conferencing tool or other application.
- **[Not Confirmed]**
This is displayed when you press the [Set] button and an RTSP stream cannot be received from the camera. See [“Frequently Asked Questions”](#).
- **[Unknown camera]**
The camera is not supported by the software. Register a camera supported by the software.
- **[Camera standby]**
The camera is in standby state. Release from standby state.
- **[Not running]**
The application is not running on the REA-C1000.
- **[Unsupported codec]**
The camera image codec is not set to H.264. Set the image codec to H.264.
- **[RTSP setting disabled]**
The RTSP streaming function of the camera is turned off. Turn on the RTSP streaming function.
When using an REA-C1000 with general user privileges, this error is not displayed when the RTSP streaming function is turned off.
- **[Connection failed]**
The camera is not responding to CGI commands.
Check the camera connection status and camera information registered in the software.
 - Power is not being supplied to the camera.
 - The camera is not connected to the network.
 - The camera IP address or HTTP port set in the software is incorrect.
- **[Connection refused]**
Connection was denied by the camera. The maximum number simultaneous connections with the camera was exceeded, or the user information (user name and password) registered in the camera may have been changed.
- **[Unknown error]**
The RTSP stream cannot be acquired due to an unknown reason. See [“Frequently Asked Questions”](#).

Error Messages

- **[It's already running.]**

This appears if you try to launch another instance of the software. Use the software that is already running.

- **[Do you want to discard the changes?]**

This appears if you try to exit the software while editing camera information. To exit the software, click the [OK] button. To continue editing, click the [Cancel] button.

- **[Enter the IP Address in IPv4 format.]**

This appears if the [IP Address] field is not in IPv4 address format or when it is blank when registering camera information. Enter the IP address in IPv4 format in the [IP Address] field.

- **[Enter a number between 0 and 65535 for HTTP Port.]**

This appears if the [HTTP Port] field value is not between 0 and 65535 when registering camera information. Enter a value between 0 and 65535 in the [HTTP Port] field.

- **[Authentication error. RTSP Port query requires administrator privileges. Please configure the RTSP Port manually.]**

This appears when the RTSP port value cannot be acquired automatically from the camera due to an authentication error when registering camera information. Place a check mark in [Manual] and enter the RTSP port value manually.

- **[Unable to connect to the camera. Please check the following settings.]**

- IP Address
- HTTP Port
- User
- Password

Also, if your camera has an SSL communication function, make sure that it is set to allow non-SSL communication.]

This appears when the RTSP port value cannot be acquired automatically from the camera due to an error, other than an authentication error, when registering camera information. Check that appropriate values have been set for [IP Address], [HTTP Port], [User], and [Password].

If SSL is not enabled on the camera, change the setting to allow non-SSL communication.

- **[Enter a number between 0 and 65535 for RTSP Port.]**

This appears if the [RTSP Port] field value is not between 0 and 65535 when registering camera information. Enter a value between 0 and 65535 in the [RTSP Port] field.

- **[This camera is in use. Do you want to change the settings?]**

This appears if a camera is being used in web conferencing tool when you try to confirm changes made to the camera registration information. To confirm the changes, click the [OK] button. To discard the changes and cancel editing, click the [Cancel] button.

- **[This camera is already registered.]**

This appears if you try to register a camera that is already registered. Either use the registered camera or register a different camera.

- **[Camera Standby. Check camera's settings.]**

This appears if a camera is in standby state when registering camera information. Release the camera from standby state and then register the information.

- **[Unsupported codec. Check camera's settings.]**

This appears if the image codec of the camera is not set to H.264 when registering camera information. Set the image codec of the camera to H.264 and then register the information.

- **[RTSP setting disabled. Check camera's settings.]**

This appears if the RTSP streaming function of the camera is turned off when registering camera information. Turn on the RTSP streaming function and then register the information.

- **[Authentication failed. Check User/Password. Or, all the RTSP sessions of the camera are used.]**

This appears if the RTSP stream reception test failed when registering camera information. Check that appropriate values have been set for [User] and [Password].

If appropriate values have been set, the maximum number of connections supported by the camera may have been exceeded. Disconnect other devices from the camera and then register the information.

- **[Unknown camera. Make sure that the camera you are connecting is a supported model.]**

This appears if you try to register a camera that is not supported by the software. Register a camera supported by the software.

- **[Connection failed. Check camera's condition.]**

This appears if a connection with the camera could not be established when registering camera information. See [“Frequently Asked Questions”](#).

- **[%d cameras (more than maximum number) are detected.]**

This appears if 113 or more cameras were detected in the [Search] window.

* “%d” indicates the number of detected cameras.

Frequently Asked Questions

- **The camera image is not displayed in a web conferencing tool.**

- Check that the settings described in [“Configuring Camera Settings”](#) are set correctly on the camera.
- Check that another logged-in user on the same computer is not using the same camera.
- The same camera cannot be used with multiple web conferencing tools simultaneously on the same computer. To use a camera that is currently being used by another web conferencing tool, first change the camera settings in the other web conferencing tool.
- If the camera is being accessed from multiple computers, the camera will not be accessible if the maximum number of simultaneous connections is exceeded.
- The web conferencing tool may not be compatible with the software. If the web conferencing tool has a dedicated application and a web browser version, try both.

- **The camera image does not move smoothly. Or there is a delay in the image.**

Use a computer equipped with a higher-performance CPU and check the operation.
Reduce the image size, frame rate, and bit rate of the H.264 stream on the camera.
If using multiple camera images simultaneously, reduce the number of cameras being used.
If the web conferencing tool has a hardware-acceleration setting, try enabling it and disabling it.

- **There is not audio output from the camera.**

Audio is not output when a microphone is not connected to the camera and when sending of audio is not enabled in the camera settings. Also, audio is not output when not using video in a web conferencing tool.

- **The image from the camera appears intermittently, and the audio is not stable.**

Reduce the bit rate of the image in the camera settings, and try again.

- **“Sony Camera 1 (Virtual Webcam)” to “Sony Camera 5 (Virtual Webcam)” are displayed in the camera list of other applications even though cameras are not registered in this software.**

When the software is installed, “Sony Camera 1 (Virtual Webcam)” to “Sony Camera 5 (Virtual Webcam)” are always displayed as selection options even if cameras are not registered.

- **Are administrator privileges required to access cameras?**

You can use cameras with this software if you have permission to acquire the stream, even if you do not have camera administrator privileges. However, administrator privileges are required to change the settings on the camera for use with this software. To change camera settings, access the camera from a web browser.
For details about changing camera permissions and settings, refer to the operating instructions for your camera.

- **Can I connect to third-party devices using this software?**

Third-party devices are not supported. Only Sony cameras listed in [“Operating Environment”](#) can be used with this software.

- **Why do the images of “Sony Camera 1 (Virtual Webcam)” to “Sony Camera 5 (Virtual Webcam)” appear inverted when viewed with a web conferencing tool when the camera is not connected?**

This is dependent on the settings of the web conferencing tool. Images transmitted by this software are not inverted.

- **How can I discard the user name and password of a camera registered in this software?**

Delete the configuration file saved by the software. The file is not deleted if the software is uninstalled.

Open Source Software License (OSS)

- This software is based in part on the work of the Independent JPEG Group.
- libjpeg-turbo

Copyright (C)2009-2021 D. R. Commander. All Rights Reserved.

Copyright (C)2015 Viktor Szathm  ry. All Rights Reserved.

Redistribution and use in source and binary forms, with or without modification, are permitted provided that the following conditions are met:

- Redistributions of source code must retain the above copyright notice, this list of conditions and the following disclaimer.
- Redistributions in binary form must reproduce the above copyright notice, this list of conditions and the following disclaimer in the documentation and/or other materials provided with the distribution.
- Neither the name of the libjpeg-turbo Project nor the names of its contributors may be used to endorse or promote products derived from this software without specific prior written permission.

THIS SOFTWARE IS PROVIDED BY THE COPYRIGHT HOLDERS AND CONTRIBUTORS "AS IS", AND ANY EXPRESS OR IMPLIED WARRANTIES, INCLUDING, BUT NOT LIMITED TO, THE IMPLIED WARRANTIES OF MERCHANTABILITY AND FITNESS FOR A PARTICULAR PURPOSE ARE DISCLAIMED. IN NO EVENT SHALL THE COPYRIGHT HOLDERS OR CONTRIBUTORS BE LIABLE FOR ANY DIRECT, INDIRECT, INCIDENTAL, SPECIAL, EXEMPLARY, OR CONSEQUENTIAL DAMAGES (INCLUDING, BUT NOT LIMITED TO, PROCUREMENT OF SUBSTITUTE GOODS OR SERVICES; LOSS OF USE, DATA, OR PROFITS; OR BUSINESS INTERRUPTION) HOWEVER CAUSED AND ON ANY THEORY OF LIABILITY, WHETHER IN CONTRACT, STRICT LIABILITY, OR TORT (INCLUDING NEGLIGENCE OR OTHERWISE) ARISING IN ANY WAY OUT OF THE USE OF THIS SOFTWARE, EVEN IF ADVISED OF THE POSSIBILITY OF SUCH DAMAGE.

- OpenCV

Apache License

Version 2.0, January 2004

<http://www.apache.org/licenses/>

TERMS AND CONDITIONS FOR USE, REPRODUCTION, AND DISTRIBUTION

1. Definitions.

"License" shall mean the terms and conditions for use, reproduction, and distribution as defined by Sections 1 through 9 of this document.

"Licensor" shall mean the copyright owner or entity authorized by the copyright owner that is granting the License.

"Legal Entity" shall mean the union of the acting entity and all other entities that control, are controlled by, or are under common control with that entity. For the purposes of this definition, "control" means (i) the power, direct or indirect, to cause the direction or management of such entity, whether by contract or otherwise, or (ii) ownership of fifty percent (50%) or more of the outstanding shares, or (iii) beneficial ownership of such entity.

"You" (or "Your") shall mean an individual or Legal Entity exercising permissions granted by this License.

"Source" form shall mean the preferred form for making modifications, including but not limited to software source code, documentation source, and configuration files.

"Object" form shall mean any form resulting from mechanical transformation or translation of a Source form, including but not limited to compiled object code, generated documentation, and conversions to other media types.

"Work" shall mean the work of authorship, whether in Source or Object form, made available under the License, as indicated by a copyright notice that is included in or attached to the work (an example is provided in the Appendix below).

"Derivative Works" shall mean any work, whether in Source or Object form, that is based on (or derived from) the Work and for which the editorial revisions, annotations, elaborations, or other modifications represent, as a whole, an original work of authorship. For the purposes of this License, Derivative Works shall not include works that remain separable from, or merely link (or bind by name) to the interfaces of, the Work and Derivative Works thereof.

"Contribution" shall mean any work of authorship, including the original version of the Work and any modifications or additions to that Work or Derivative Works thereof, that is intentionally submitted to Licensor for inclusion in the Work by the copyright owner or by an individual or Legal Entity authorized to submit on behalf of the copyright owner. For the purposes of this definition, "submitted" means any form of electronic, verbal, or written communication sent to the Licensor or its representatives, including but not limited to communication on electronic mailing lists, source code control systems, and issue tracking systems that are managed by, or on behalf of, the Licensor for the purpose of discussing and improving the Work, but excluding communication that is conspicuously marked or otherwise designated in writing by the copyright owner as "Not a Contribution."

"Contributor" shall mean Licensor and any individual or Legal Entity on behalf of whom a Contribution has been received by Licensor and subsequently incorporated within the Work.

2. **Grant of Copyright License.** Subject to the terms and conditions of this License, each Contributor hereby grants to You a perpetual, worldwide, non-exclusive, no-charge, royalty-free, irrevocable copyright license to reproduce, prepare Derivative Works of, publicly display, publicly perform, sublicense, and distribute the Work and such Derivative Works in Source or Object form.
3. **Grant of Patent License.** Subject to the terms and conditions of this License, each Contributor hereby grants to You a perpetual, worldwide, non-exclusive, no-charge, royalty-free, irrevocable (except as stated in this section) patent license to make, have made, use, offer to sell, sell, import, and otherwise transfer the Work, where such license applies only to those patent claims licensable by such Contributor that are necessarily infringed by their Contribution(s) alone or by combination of their Contribution(s) with the Work to which such Contribution(s) was submitted. If You institute patent litigation against any entity (including a cross-claim or counterclaim in a lawsuit) alleging that the Work or a Contribution incorporated within the Work constitutes direct or contributory patent infringement, then any patent licenses granted to You under this License for that Work shall terminate as of the date such litigation is filed.
4. **Redistribution.** You may reproduce and distribute copies of the Work or Derivative Works thereof in any medium, with or without modifications, and in Source or Object form, provided that You meet the following conditions:
 - (a) You must give any other recipients of the Work or Derivative Works a copy of this License; and
 - (b) You must cause any modified files to carry prominent notices stating that You changed the files; and
 - (c) You must retain, in the Source form of any Derivative Works that You distribute, all copyright, patent, trademark, and attribution notices from the Source form of the Work, excluding those notices that do not pertain to any part of the Derivative Works; and
 - (d) If the Work includes a "NOTICE" text file as part of its distribution, then any Derivative Works that You distribute must include a readable copy of the attribution notices contained within such NOTICE file, excluding those notices that do not pertain to any part of the Derivative Works, in at least one of the following places: within a NOTICE text file distributed as part of the Derivative Works; within the Source form or documentation, if provided along with the Derivative Works; or, within a display generated by the Derivative Works, if and wherever such third-party notices normally appear. The contents of the NOTICE file are for informational purposes only and do not modify the License. You may add Your own attribution notices within Derivative Works that You distribute, alongside or as an addendum to the NOTICE text from the Work, provided that such additional attribution notices cannot be construed as modifying the License.

You may add Your own copyright statement to Your modifications and may provide additional or different license terms and conditions for use, reproduction, or distribution of Your modifications, or for any such Derivative Works as a whole, provided Your use, reproduction, and distribution of the Work otherwise complies with the conditions stated in this License.

5. **Submission of Contributions.** Unless You explicitly state otherwise, any Contribution intentionally submitted for inclusion in the Work by You to the Licensor shall be under the terms and conditions of this License, without any additional terms or conditions. Notwithstanding the above, nothing herein shall supersede or modify the terms of any separate license agreement you may have executed with Licensor regarding such Contributions.
6. **Trademarks.** This License does not grant permission to use the trade names, trademarks, service marks, or product names of the Licensor, except as required for reasonable and customary use in describing the origin of the Work and reproducing the content of the NOTICE file.

7. Disclaimer of Warranty. Unless required by applicable law or agreed to in writing, Licensor provides the Work (and each Contributor provides its Contributions) on an "AS IS" BASIS, WITHOUT WARRANTIES OR CONDITIONS OF ANY KIND, either express or implied, including, without limitation, any warranties or conditions of TITLE, NON-INFRINGEMENT, MERCHANTABILITY, or FITNESS FOR A PARTICULAR PURPOSE. You are solely responsible for determining the appropriateness of using or redistributing the Work and assume any risks associated with Your exercise of permissions under this License.
8. Limitation of Liability. In no event and under no legal theory, whether in tort (including negligence), contract, or otherwise, unless required by applicable law (such as deliberate and grossly negligent acts) or agreed to in writing, shall any Contributor be liable to You for damages, including any direct, indirect, special, incidental, or consequential damages of any character arising as a result of this License or out of the use or inability to use the Work (including but not limited to damages for loss of goodwill, work stoppage, computer failure or malfunction, or any and all other commercial damages or losses), even if such Contributor has been advised of the possibility of such damages.
9. Accepting Warranty or Additional Liability. While redistributing the Work or Derivative Works thereof, You may choose to offer, and charge a fee for, acceptance of support, warranty, indemnity, or other liability obligations and/or rights consistent with this License. However, in accepting such obligations, You may act only on Your own behalf and on Your sole responsibility, not on behalf of any other Contributor, and only if You agree to indemnify, defend, and hold each Contributor harmless for any liability incurred by, or claims asserted against, such Contributor by reason of your accepting any such warranty or additional liability.

END OF TERMS AND CONDITIONS

APPENDIX: How to apply the Apache License to your work.

To apply the Apache License to your work, attach the following boilerplate notice, with the fields enclosed by brackets "[]" replaced with your own identifying information. (Don't include the brackets!) The text should be enclosed in the appropriate comment syntax for the file format. We also recommend that a file or class name and description of purpose be included on the same "printed page" as the copyright notice for easier identification within third-party archives.

Copyright [yyyy] [name of copyright owner]

Licensed under the Apache License, Version 2.0 (the "License"); you may not use this file except in compliance with the License.

You may obtain a copy of the License at

<http://www.apache.org/licenses/LICENSE-2.0>

Unless required by applicable law or agreed to in writing, software distributed under the License is distributed on an "AS IS" BASIS, WITHOUT WARRANTIES OR CONDITIONS OF ANY KIND, either express or implied. See the License for the specific language governing permissions and limitations under the License.

- johnboiles/coremediaio-dal-minimal-example

MIT License

Copyright (c) 2020 John Boiles

Permission is hereby granted, free of charge, to any person obtaining a copy of this software and associated documentation files (the "Software"), to deal in the Software without restriction, including without limitation the rights to use, copy, modify, merge, publish, distribute, sublicense, and/or sell copies of the Software, and to permit persons to whom the Software is furnished to do so, subject to the following conditions:

The above copyright notice and this permission notice shall be included in all copies or substantial portions of the Software.

THE SOFTWARE IS PROVIDED "AS IS", WITHOUT WARRANTY OF ANY KIND, EXPRESS OR IMPLIED, INCLUDING BUT NOT LIMITED TO THE WARRANTIES OF MERCHANTABILITY, FITNESS FOR A PARTICULAR PURPOSE AND NONINFRINGEMENT. IN NO EVENT SHALL THE AUTHORS OR COPYRIGHT HOLDERS BE LIABLE FOR ANY CLAIM, DAMAGES OR OTHER LIABILITY, WHETHER IN AN ACTION OF CONTRACT, TORT OR OTHERWISE, ARISING FROM, OUT OF OR IN CONNECTION WITH THE SOFTWARE OR THE USE OR OTHER DEALINGS IN THE SOFTWARE.

- nlhmann/json

MIT License

Copyright (c) 2013-2021 Niels Lohmann

Permission is hereby granted, free of charge, to any person obtaining a copy of this software and associated documentation files (the "Software"), to deal in the Software without restriction, including without limitation the rights to use, copy, modify, merge, publish, distribute, sublicense, and/or sell copies of the Software, and to permit persons to whom the Software is furnished to do so, subject to the following conditions:

The above copyright notice and this permission notice shall be included in all copies or substantial portions of the Software.

THE SOFTWARE IS PROVIDED "AS IS", WITHOUT WARRANTY OF ANY KIND, EXPRESS OR IMPLIED, INCLUDING BUT NOT LIMITED TO THE WARRANTIES OF MERCHANTABILITY, FITNESS FOR A PARTICULAR PURPOSE AND NONINFRINGEMENT. IN NO EVENT SHALL THE AUTHORS OR COPYRIGHT HOLDERS BE LIABLE FOR ANY CLAIM, DAMAGES OR OTHER LIABILITY, WHETHER IN AN ACTION OF CONTRACT, TORT OR OTHERWISE, ARISING FROM, OUT OF OR IN CONNECTION WITH THE SOFTWARE OR THE USE OR OTHER DEALINGS IN THE SOFTWARE.

-- ffmpeg

GNU LESSER GENERAL PUBLIC LICENSE

Version 2.1, February 1999

Copyright (C) 1991, 1999 Free Software Foundation, Inc. 51 Franklin Street, Fifth Floor, Boston, MA 02110-1301 USA

Everyone is permitted to copy and distribute verbatim copies of this license document, but changing it is not allowed.

[This is the first released version of the Lesser GPL. It also counts as the successor of the GNU Library Public License, version 2, hence the version number 2.1.]

Preamble

he licenses for most software are designed to take away your freedom to share and change it. By contrast, the GNU General Public Licenses are intended to guarantee your freedom to share and change free software--to make sure the software is free for all its users.

This license, the Lesser General Public License, applies to some specially designated software packages--typically libraries--of the Free Software Foundation and other authors who decide to use it. You can use it too, but we suggest you first think carefully about whether this license or the ordinary General Public License is the better strategy to use in any particular case, based on the explanations below.

When we speak of free software, we are referring to freedom of use, not price. Our General Public Licenses are designed to make sure that you have the freedom to distribute copies of free software (and charge for this service if you wish); that you receive source code or can get it if you want it; that you can change the software and use pieces of it in new free programs; and that you are informed that you can do these things.

To protect your rights, we need to make restrictions that forbid distributors to deny you these rights or to ask you to surrender these rights. These restrictions translate to certain responsibilities for you if you distribute copies of the library or if you modify it.

For example, if you distribute copies of the library, whether gratis or for a fee, you must give the recipients all the rights that we gave you. You must make sure that they, too, receive or can get the source code. If you link other code with the library, you must provide complete object files to the recipients, so that they can relink them with the library after making changes to the library and recompiling it. And you must show them these terms so they know their rights.

We protect your rights with a two-step method: (1) we copyright the library, and (2) we offer you this license, which gives you legal permission to copy, distribute and/or modify the library.

To protect each distributor, we want to make it very clear that there is no warranty for the free library. Also, if the library is modified by someone else and passed on, the recipients should know that what they have is not the original version, so that the original author's reputation will not be affected by problems that might be introduced by others.

Finally, software patents pose a constant threat to the existence of any free program. We wish to make sure that a company cannot effectively restrict the users of a free program by obtaining a restrictive license from a patent holder. Therefore, we insist that any patent license obtained for a version of the library must be consistent with the full freedom of use specified in this license.

Most GNU software, including some libraries, is covered by the ordinary GNU General Public License. This license, the GNU Lesser General Public License, applies to certain designated libraries, and is quite different from the ordinary General Public License. We use this license for certain libraries in order to permit linking those libraries into non-free programs.

When a program is linked with a library, whether statically or using a shared library, the combination of the two is legally speaking a combined work, a derivative of the original library. The ordinary General Public License therefore permits such linking only if the entire combination fits its criteria of freedom. The Lesser General Public License permits more lax criteria for linking other code with the library.

We call this license the "Lesser" General Public License because it does Less to protect the user's freedom than the ordinary General Public License. It also provides other free software developers Less of an advantage over competing non-free programs. These disadvantages are the reason we use the ordinary General Public License for many libraries. However, the Lesser license provides advantages in certain special circumstances.

For example, on rare occasions, there may be a special need to encourage the widest possible use of a certain library, so that it becomes a de-facto standard. To achieve this, non-free programs must be allowed to use the library. A more frequent case is that a free library does the same job as widely used non-free libraries. In this case, there is little to gain by limiting the free library to free software only, so we use the Lesser General Public License.

In other cases, permission to use a particular library in non-free programs enables a greater number of people to use a large body of free software. For example, permission to use the GNU C Library in non-free programs enables many more people to use the whole GNU operating system, as well as its variant, the GNU/Linux operating system. Although the Lesser General Public License is less protective of the users' freedom, it does ensure that the user of a program that is linked with the Library has the freedom and the wherewithal to run that program using a modified version of the Library.

The precise terms and conditions for copying, distribution and modification follow. Pay close attention to the difference between a "work based on the library" and a "work that uses the library". The former contains code derived from the library, whereas the latter must be combined with the library in order to run.

TERMS AND CONDITIONS FOR COPYING, DISTRIBUTION AND MODIFICATION

0. This License Agreement applies to any software library or other program which contains a notice placed by the copyright holder or other authorized party saying it may be distributed under the terms of this Lesser General Public License (also called "this License"). Each licensee is addressed as "you".

A "library" means a collection of software functions and/or data prepared so as to be conveniently linked with application programs (which use some of those functions and data) to form executables.

The "Library", below, refers to any such software library or work which has been distributed under these terms. A "work based on the Library" means either the Library or any derivative work under copyright law: that is to say, a work containing the Library or a portion of it, either verbatim or with modifications and/or translated straightforwardly into another language. (Hereinafter, translation is included without limitation in the term "modification".)

"Source code" for a work means the preferred form of the work for making modifications to it. For a library, complete source code means all the source code for all modules it contains, plus any associated interface definition files, plus the scripts used to control compilation and installation of the library.

Activities other than copying, distribution and modification are not covered by this License; they are outside its scope. The act of running a program using the Library is not restricted, and output from such a program is covered only if its contents constitute a work based on the Library (independent of the use of the Library in a tool for writing it). Whether that is true depends on what the Library does and what the program that uses the Library does.

1. You may copy and distribute verbatim copies of the Library's complete source code as you receive it, in any medium, provided that you conspicuously and appropriately publish on each copy an appropriate copyright notice and disclaimer of warranty; keep intact all the notices that refer to this License and to the absence of any warranty; and distribute a copy of this License along with the Library.

You may charge a fee for the physical act of transferring a copy, and you may at your option offer warranty protection in exchange for a fee.

2. You may modify your copy or copies of the Library or any portion of it, thus forming a work based on the Library, and copy and distribute such modifications or work under the terms of Section 1 above, provided that you also meet all of these conditions:

- a) The modified work must itself be a software library.
- b) You must cause the files modified to carry prominent notices stating that you changed the files and the date of any change.
- c) You must cause the whole of the work to be licensed at no charge to all third parties under the terms of this License.
- d) If a facility in the modified Library refers to a function or a table of data to be supplied by an application program that uses the facility, other than as an argument passed when the facility is invoked, then you must make a good faith effort to ensure that, in the event an application does not supply such function or table, the facility still operates, and performs whatever part of its purpose remains meaningful.

(For example, a function in a library to compute square roots has a purpose that is entirely well-defined independent of the application. Therefore, Subsection 2d requires that any application-supplied function or table used by this function must be optional: if the application does not supply it, the square root function must still compute square roots.)

These requirements apply to the modified work as a whole. If identifiable sections of that work are not derived from the Library, and can be reasonably considered independent and separate works in themselves, then this License, and its terms, do not apply to those sections when you distribute them as separate works. But when you distribute the same sections as part of a whole which is a work based on the Library, the distribution of the whole must be on the terms of this License, whose permissions for other licensees extend to the entire whole, and thus to each and every part regardless of who wrote it.

Thus, it is not the intent of this section to claim rights or contest your rights to work written entirely by you; rather, the intent is to exercise the right to control the distribution of derivative or collective works based on the Library.

In addition, mere aggregation of another work not based on the Library with the Library (or with a work based on the Library) on a volume of a storage or distribution medium does not bring the other work under the scope of this License.

3. You may opt to apply the terms of the ordinary GNU General Public License instead of this License to a given copy of the Library. To do this, you must alter all the notices that refer to this License, so that they refer to the ordinary GNU

General Public License, version 2, instead of to this License. (If a newer version than version 2 of the ordinary GNU General Public License has appeared, then you can specify that version instead if you wish.) Do not make any other change in these notices.

Once this change is made in a given copy, it is irreversible for that copy, so the ordinary GNU General Public License applies to all subsequent copies and derivative works made from that copy.

This option is useful when you wish to copy part of the code of the Library into a program that is not a library.

4. You may copy and distribute the Library (or a portion or derivative of it, under Section 2) in object code or executable form under the terms of Sections 1 and 2 above provided that you accompany it with the complete corresponding machine-readable source code, which must be distributed under the terms of Sections 1 and 2 above on a medium customarily used for software interchange.

If distribution of object code is made by offering access to copy from a designated place, then offering equivalent access to copy the source code from the same place satisfies the requirement to distribute the source code, even though third parties are not compelled to copy the source along with the object code.

5. A program that contains no derivative of any portion of the Library, but is designed to work with the Library by being compiled or linked with it, is called a "work that uses the Library". Such a work, in isolation, is not a derivative work of the Library, and therefore falls outside the scope of this License.

However, linking a "work that uses the Library" with the Library creates an executable that is a derivative of the Library (because it contains portions of the Library), rather than a "work that uses the library". The executable is therefore covered by this License. Section 6 states terms for distribution of such executables.

When a "work that uses the Library" uses material from a header file that is part of the Library, the object code for the work may be a derivative work of the Library even though the source code is not. Whether this is true is especially significant if the work can be linked without the Library, or if the work is itself a library. The threshold for this to be true is not precisely defined by law.

If such an object file uses only numerical parameters, data structure layouts and accessors, and small macros and small inline functions (ten lines or less in length), then the use of the object file is unrestricted, regardless of whether it is legally a derivative work. (Executables containing this object code plus portions of the Library will still fall under Section 6.)

Otherwise, if the work is a derivative of the Library, you may distribute the object code for the work under the terms of Section 6. Any executables containing that work also fall under Section 6, whether or not they are linked directly with the Library itself.

6. As an exception to the Sections above, you may also combine or link a "work that uses the Library" with the Library to produce a work containing portions of the Library, and distribute that work under terms of your choice, provided that the terms permit modification of the work for the customer's own use and reverse engineering for debugging such modifications.

You must give prominent notice with each copy of the work that the Library is used in it and that the Library and its use are covered by this License. You must supply a copy of this License. If the work during execution displays copyright notices, you must include the copyright notice for the Library among them, as well as a reference directing the user to the copy of this License. Also, you must do one of these things:

a) Accompany the work with the complete corresponding machine-readable source code for the Library including whatever changes were used in the work (which must be distributed under Sections 1 and 2 above); and, if the work is an executable linked with the Library, with the complete machine-readable "work that uses the Library", as object code and/or source code, so that the user can modify the Library and then relink to produce a modified executable containing the modified Library. (It is understood that the user who changes the contents of definitions files in the Library will not necessarily be able to recompile the application to use the modified definitions.)

b) Use a suitable shared library mechanism for linking with the Library. A suitable mechanism is one that (1) uses at run time a copy of the library already present on the user's computer system, rather than copying library functions into the executable, and (2) will operate properly with a modified version of the library, if the user installs one, as long as the modified version is interface-compatible with the version that the work was made with.

c) Accompany the work with a written offer, valid for at least three years, to give the same user the materials specified in Subsection 6a, above, for a charge no more than the cost of performing this distribution.

d) If distribution of the work is made by offering access to copy from a designated place, offer equivalent access to copy the above specified materials from the same place.

e) Verify that the user has already received a copy of these materials or that you have already sent this user a copy. For an executable, the required form of the "work that uses the Library" must include any data and utility programs needed for reproducing the executable from it. However, as a special exception, the materials to be distributed need not include anything that is normally distributed (in either source or binary form) with the major components (compiler, kernel, and so on) of the operating system on which the executable runs, unless that component itself accompanies the executable.

It may happen that this requirement contradicts the license restrictions of other proprietary libraries that do not normally accompany the operating system. Such a contradiction means you cannot use both them and the Library together in an executable that you distribute.

7. You may place library facilities that are a work based on the Library side-by-side in a single library together with other library facilities not covered by this License, and distribute such a combined library, provided that the separate distribution of the work based on the Library and of the other library facilities is otherwise permitted, and provided that you do these two things:

- a) Accompany the combined library with a copy of the same work based on the Library, uncombined with any other library facilities. This must be distributed under the terms of the Sections above.
- b) Give prominent notice with the combined library of the fact that part of it is a work based on the Library, and explaining where to find the accompanying uncombined form of the same work.

8. You may not copy, modify, sublicense, link with, or distribute the Library except as expressly provided under this License. Any attempt otherwise to copy, modify, sublicense, link with, or distribute the Library is void, and will automatically terminate your rights under this License. However, parties who have received copies, or rights, from you under this License will not have their licenses terminated so long as such parties remain in full compliance.

9. You are not required to accept this License, since you have not signed it. However, nothing else grants you permission to modify or distribute the Library or its derivative works. These actions are prohibited by law if you do not accept this License. Therefore, by modifying or distributing the Library (or any work based on the Library), you indicate your acceptance of this License to do so, and all its terms and conditions for copying, distributing or modifying the Library or works based on it.

10. Each time you redistribute the Library (or any work based on the Library), the recipient automatically receives a license from the original licensor to copy, distribute, link with or modify the Library subject to these terms and conditions. You may not impose any further restrictions on the recipients' exercise of the rights granted herein. You are not responsible for enforcing compliance by third parties with this License.

11. If, as a consequence of a court judgment or allegation of patent infringement or for any other reason (not limited to patent issues), conditions are imposed on you (whether by court order, agreement or otherwise) that contradict the conditions of this License, they do not excuse you from the conditions of this License. If you cannot distribute so as to satisfy simultaneously your obligations under this License and any other pertinent obligations, then as a consequence you may not distribute the Library at all. For example, if a patent license would not permit royalty-free redistribution of the Library by all those who receive copies directly or indirectly through you, then the only way you could satisfy both it and this License would be to refrain entirely from distribution of the Library.

If any portion of this section is held invalid or unenforceable under any particular circumstance, the balance of the section is intended to apply, and the section as a whole is intended to apply in other circumstances.

It is not the purpose of this section to induce you to infringe any patents or other property right claims or to contest validity of any such claims; this section has the sole purpose of protecting the integrity of the free software distribution system which is implemented by public license practices. Many people have made generous contributions to the wide range of software distributed through that system in reliance on consistent application of that system; it is up to the author/donor to decide if he or she is willing to distribute software through any other system and a licensee cannot impose that choice.

This section is intended to make thoroughly clear what is believed to be a consequence of the rest of this License.

12. If the distribution and/or use of the Library is restricted in certain countries either by patents or by copyrighted interfaces, the original copyright holder who places the Library under this License may add an explicit geographical distribution limitation excluding those countries, so that distribution is permitted only in or among countries not thus excluded. In such case, this License incorporates the limitation as if written in the body of this License.

13. The Free Software Foundation may publish revised and/or new versions of the Lesser General Public License from time to time. Such new versions will be similar in spirit to the present version, but may differ in detail to address new problems or concerns.

Each version is given a distinguishing version number. If the Library specifies a version number of this License which applies to it and "any later version", you have the option of following the terms and conditions either of that version or of any later version published by the Free Software Foundation. If the Library does not specify a license version number, you may choose any version ever published by the Free Software Foundation.

14. If you wish to incorporate parts of the Library into other free programs whose distribution conditions are incompatible with these, write to the author to ask for permission. For software which is copyrighted by the Free Software Foundation, write to the Free Software Foundation; we sometimes make exceptions for this. Our decision will be guided by the two goals of preserving the free status of all derivatives of our free software and of promoting the sharing and reuse of software generally.

NO WARRANTY

15. BECAUSE THE LIBRARY IS LICENSED FREE OF CHARGE, THERE IS NO WARRANTY FOR THE LIBRARY, TO THE EXTENT PERMITTED BY APPLICABLE LAW. EXCEPT WHEN OTHERWISE STATED IN WRITING THE COPYRIGHT HOLDERS AND/OR OTHER PARTIES PROVIDE THE LIBRARY "AS IS" WITHOUT WARRANTY OF ANY KIND, EITHER EXPRESSED OR IMPLIED, INCLUDING, BUT NOT LIMITED TO, THE IMPLIED WARRANTIES OF MERCHANTABILITY AND FITNESS FOR A PARTICULAR PURPOSE. THE ENTIRE RISK AS TO THE QUALITY AND PERFORMANCE OF THE LIBRARY IS WITH YOU. SHOULD THE LIBRARY PROVE DEFECTIVE, YOU ASSUME THE COST OF ALL NECESSARY SERVICING, REPAIR OR CORRECTION.

16. IN NO EVENT UNLESS REQUIRED BY APPLICABLE LAW OR AGREED TO IN WRITING WILL ANY COPYRIGHT HOLDER, OR ANY OTHER PARTY WHO MAY MODIFY AND/OR REDISTRIBUTE THE LIBRARY AS PERMITTED ABOVE, BE LIABLE TO YOU FOR DAMAGES, INCLUDING ANY GENERAL, SPECIAL, INCIDENTAL OR CONSEQUENTIAL DAMAGES ARISING OUT OF THE USE OR INABILITY TO USE THE LIBRARY (INCLUDING BUT NOT LIMITED TO LOSS OF DATA OR DATA BEING RENDERED INACCURATE OR LOSSES SUSTAINED BY YOU OR THIRD PARTIES OR A FAILURE OF THE LIBRARY TO OPERATE WITH ANY OTHER SOFTWARE), EVEN IF SUCH HOLDER OR OTHER PARTY HAS BEEN ADVISED OF THE POSSIBILITY OF SUCH DAMAGES.

END OF TERMS AND CONDITIONS

How to Apply These Terms to Your New Libraries

If you develop a new library, and you want it to be of the greatest possible use to the public, we recommend making it free software that everyone can redistribute and change. You can do so by permitting redistribution under these terms (or, alternatively, under the terms of the ordinary General Public License).

To apply these terms, attach the following notices to the library. It is safest to attach them to the start of each source file to most effectively convey the exclusion of warranty; and each file should have at least the "copyright" line and a pointer to where the full notice is found.

one line to give the library's name and an idea of what it does.

Copyright (C) year name of author

This library is free software; you can redistribute it and/or modify it under the terms of the GNU Lesser General Public License as published by the Free Software Foundation; either version 2.1 of the License, or (at your option) any later version.

This library is distributed in the hope that it will be useful, but WITHOUT ANY WARRANTY; without even the implied warranty of MERCHANTABILITY or FITNESS FOR A PARTICULAR PURPOSE. See the GNU Lesser General Public License for more details.

You should have received a copy of the GNU Lesser General Public License along with this library; if not, write to the Free Software Foundation, Inc., 51 Franklin Street, Fifth Floor, Boston, MA 02110-1301 USA

Also add information on how to contact you by electronic and paper mail.

You should also get your employer (if you work as a programmer) or your school, if any, to sign a "copyright disclaimer" for the library, if necessary. Here is a sample; alter the names:

Yoyodyne, Inc., hereby disclaims all copyright interest in the library 'Frob' (a library for tweaking knobs) written by James Random Hacker.

signature of Ty Coon, 1 April 1990

Ty Coon, President of Vice

That's all there is to it!

- Json.NET

The MIT License (MIT)

Copyright (c) 2007 James Newton-King

Permission is hereby granted, free of charge, to any person obtaining a copy of this software and associated documentation files (the "Software"), to deal in the Software without restriction, including without limitation the rights to use, copy, modify, merge, publish, distribute, sublicense, and/or sell copies of the Software, and to permit persons to whom the Software is furnished to do so, subject to the following conditions:

The above copyright notice and this permission notice shall be included in all copies or substantial portions of the Software.

THE SOFTWARE IS PROVIDED "AS IS", WITHOUT WARRANTY OF ANY KIND, EXPRESS OR IMPLIED, INCLUDING BUT NOT LIMITED TO THE WARRANTIES OF MERCHANTABILITY, FITNESS FOR A PARTICULAR PURPOSE AND NONINFRINGEMENT. IN NO EVENT SHALL THE AUTHORS OR COPYRIGHT HOLDERS BE LIABLE FOR ANY CLAIM, DAMAGES OR OTHER LIABILITY, WHETHER IN AN ACTION OF CONTRACT, TORT OR OTHERWISE, ARISING FROM, OUT OF OR IN CONNECTION WITH THE SOFTWARE OR THE USE OR OTHER DEALINGS IN THE SOFTWARE.

Other

Usage precautions

- SONY WILL NOT BE LIABLE FOR DAMAGES OF ANY KIND RESULTING FROM A FAILURE TO IMPLEMENT PROPER SECURITY MEASURES ON TRANSMISSION DEVICES, UNAVOIDABLE DATA LEAKS RESULTING FROM TRANSMISSION SPECIFICATIONS, OR SECURITY PROBLEMS OF ANY KIND.
- Depending on the operating environment, unauthorized third parties on the network may be able to access the system.
We strongly recommend configuring all of the passwords for security purposes.

Trademarks

- Windows is a registered trademark of Microsoft Corporation in the United States and other countries.
- macOS is a trademark of Apple Inc. in the U.S. and other countries.
- Intel, the Intel logo, and Intel Core are trademarks or registered trademarks of Intel Corporation in the U.S. and other countries.