

Wireless Speaker
SRS-XV900

The following explains how to use this speaker. Select a topic from the navigation pane.
Design and specifications are subject to change without notice.
Use the latest versions of the software pre-installed on the speaker and “Sony | Music Center.”

Getting Started

[Parts and controls](#)

[Carrying the speaker](#)

Power source/charging

[Charging the speaker](#)

[Turning the power on](#)

[Turning the power off](#)

[Using the BLUETOOTH standby \(auto power on\) function](#)

[Charging a USB device such as a smartphone or iPhone](#)

[Auto Standby \(power saving\) function](#)

Lighting function

└ [Turning on/off the speaker's light \(Lighting function\)](#)

Making connections

TV

└ [Connecting the speaker with a TV](#)

USB device

└ [Connecting with a USB device](#)

BLUETOOTH device

└ [Pairing and connecting with BLUETOOTH® devices](#)

└ [Connecting with a computer via a BLUETOOTH connection \(Windows®\)](#)

└ [Connecting with a computer via a BLUETOOTH connection \(Mac\)](#)

Multipoint connection

└ [Connecting the speaker concurrently with 2 BLUETOOTH devices \(multipoint connection\)](#)

Listening to TV audio

[Listening to TV audio \(with use of the TV Sound Booster function\)](#)

[Listening to TV audio \(without use of the TV Sound Booster function\)](#)

Listening to music

USB device

└ [Listening to music of a USB device](#)

BLUETOOTH device

└ [Listening to music of a device via BLUETOOTH connection](#)

└ [Selecting the quality for music playback via BLUETOOTH connection \(Codec\)](#)

└ [Terminating the BLUETOOTH connection \(After use\)](#)

└ [Turning on or off the BLUETOOTH function](#)

[Listening to music of a portable audio device, etc.](#)

[Enjoying switching the sound effects](#)

Stereo Pair function

└ [Listening to music wirelessly with 2 speakers \(Stereo Pair function\)](#)

Party Connect function

└ [Enjoying wireless playback using multiple speakers \(Party Connect function\)](#)

Additional features

- [Using an external microphone](#)

- [Enjoying sound from a guitar](#)

Using “Sony | Music Center”

- [What you can do with “Sony | Music Center”](#)

- [Installing “Sony | Music Center”](#)

Using “Fiestable”

- [What you can do with “Fiestable”](#)

- [Installing “Fiestable”](#)

Information

- [About the indicators](#)

- [Updating the pre-installed software](#)

Notes on use

- [Precautions](#)

- [Notes on charging](#)

- [How to care for the speaker](#)

- [About the BLUETOOTH wireless technology](#)

- [Licenses](#)

- [Trademarks](#)

Troubleshooting

- [What can I do to solve a problem?](#)

Power supply

- [Unable to charge the speaker](#)

- [Unable to turn on the speaker or the speaker suddenly turns off](#)

Sound

- [No sound/Sound from only one speaker/Distorted sound/Humming or noise in the speaker output](#)

- [The sound volume is low](#)

- [Sound becomes low while in use](#)

TV Sound Booster

- [No sound comes out from the speaker](#)
- [Video and audio are not synchronized; or audio sounds duplicated](#)
- [The sound volume is low](#)
- [Neither the Karaoke function nor the DJ Control function are available for use while the TV Sound Booster function is activated](#)

USB device

- [The USB device is not detected; playback with an audio source fails; no sound comes out of the speaker; playback does not start with the first track](#)
- [The sound from the speaker contains noise, skips, or is distorted](#)
- [It takes a long time before playback starts](#)

BLUETOOTH device

- [Unable to pair the speaker with a BLUETOOTH device](#)
- [Speaker output is interrupted](#)
- [Unable to connect a BLUETOOTH device with the speaker for the Stereo Pair function](#)
- [Unable to connect with a speaker for the Party Connect function](#)
- [Unable to add a speaker for the Party Connect function](#)
- [Unable to connect the speaker concurrently with 2 devices \(multipoint connection\)](#)

Microphone

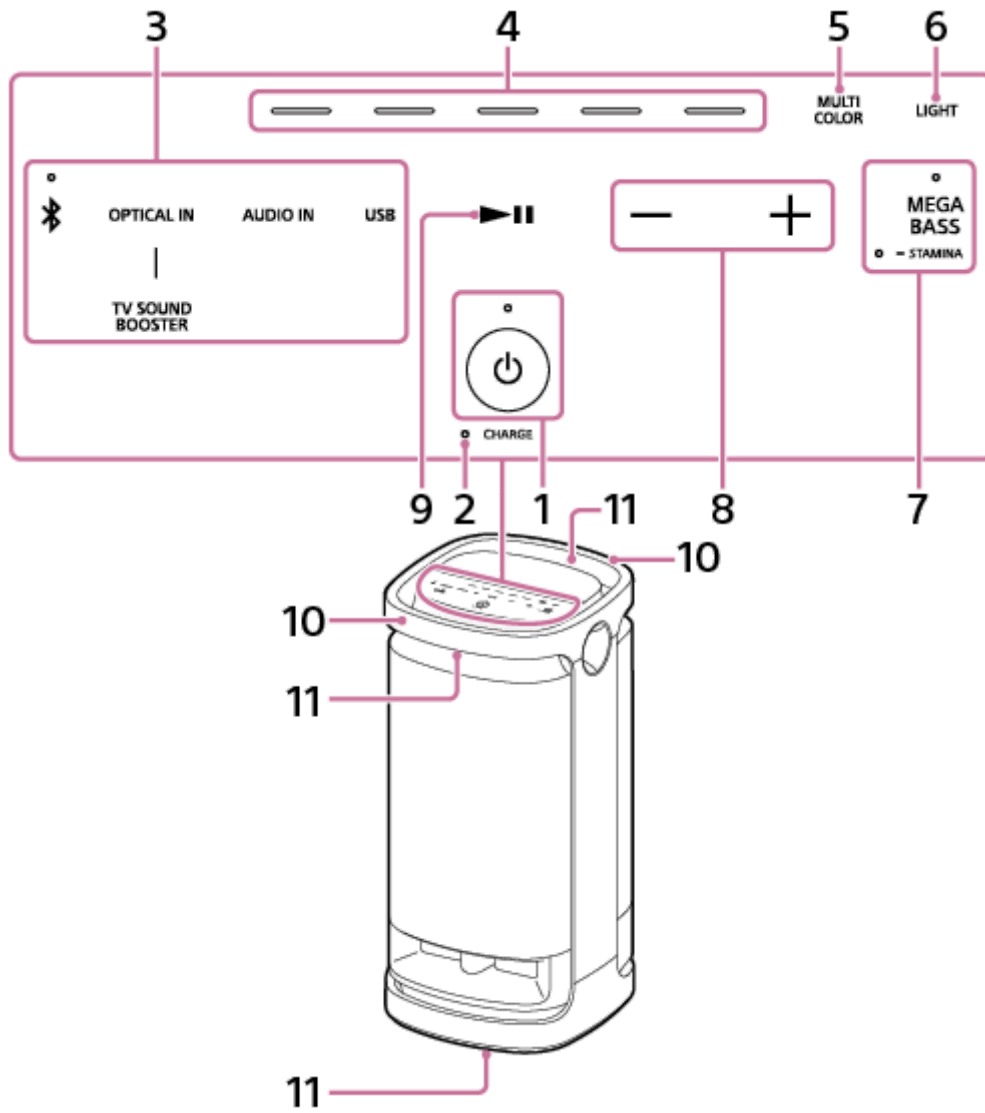
- [There is no microphone sound](#)
- [There is acoustic feedback](#)

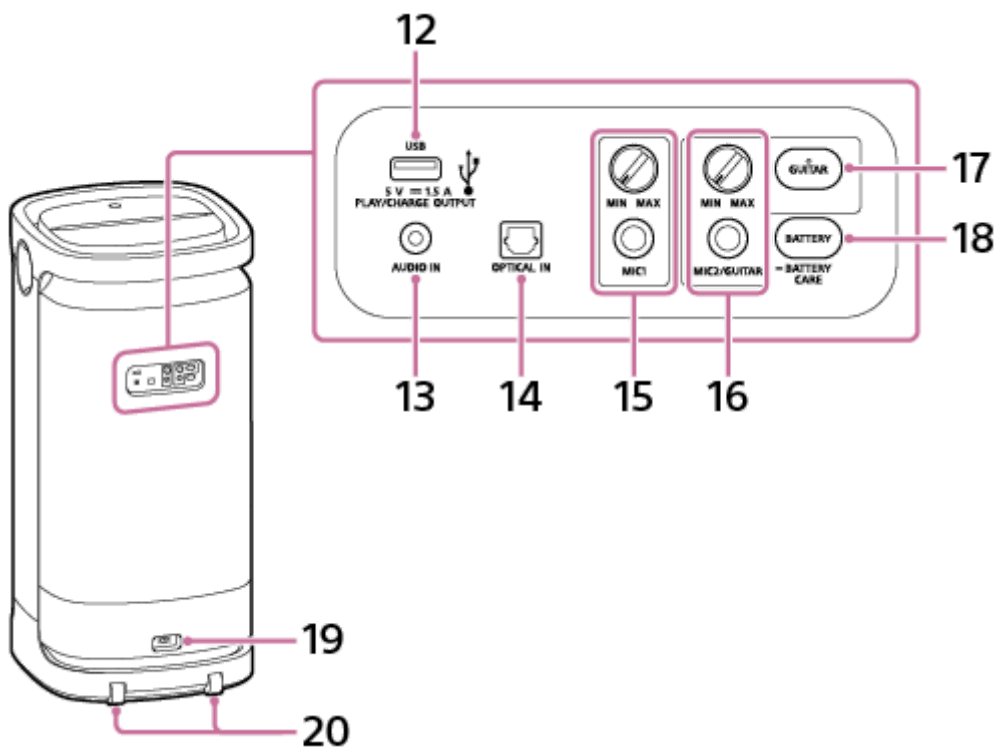
Reset

- [Restarting the speaker](#)
- [Initializing the speaker](#)

Wireless Speaker
SRS-XV900

Parts and controls





1. ⏻ (power) button with indicator
2. CHARGE indicator
3. Direct function keys
Touch one of the keys that is associated with the function you want to activate.

- 📶 (BLUETOOTH) with indicator
- OPTICAL IN
- AUDIO IN
- USB
- TV SOUND BOOSTER

4. Lighting color selectors (red/yellow/green/blue/purple)
5. MULTI COLOR
6. LIGHT
7. MEGA BASS with indicator/ ■ STAMINA with indicator

8. +/- (volume)
9. ▶|| (play)


10. Handles

11. Lights

12. PLAY/CHARGE OUTPUT (DC power output only) port (USB)

13. AUDIO IN jack (Φ 3.5 mm)

14. OPTICAL IN (optical digital audio input) connector

15. MIC level (MIN/MAX) knob
MIC1 jack (Φ 6.3 mm)
16. MIC and GUITAR level (MIN/MAX) knob
MIC2/GUITAR jack (Φ 6.3 mm)
17. GUITAR button with indicator
18. BATTERY button/  BATTERY CARE button
19. AC IN jack
20. Caster wheels

Related Topic

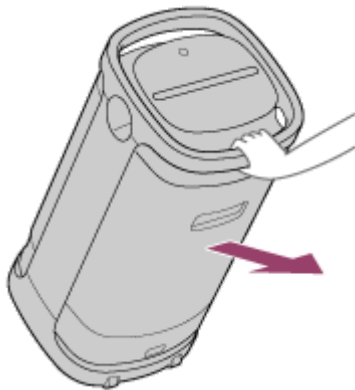
- [About the indicators](#)

Wireless Speaker
SRS-XV900

Carrying the speaker

The speaker has caster wheels so that you can roll it easily.

To move the speaker, grasp the center of the handle, which is on the same side of the speaker as the caster wheels, with one hand and tug the speaker while making sure that it rolls on the caster wheels.



On such a surface that makes the speaker wobble while being moved, grab the handle with both hands and push the speaker.



The caster wheels can be used only on flat surfaces.

Lift the speaker by two people on uneven surfaces using the handles on the speaker. The correct hand placement for carrying the speaker is very important to avoid personal injuries and/or property damage.

Before carrying the speaker, disconnect all the cables.

Note

- To avoid personal injury or damage to surrounding household goods, hold the speaker properly as illustrated above to carry the speaker.
- Exercise extreme caution when carrying the speaker on a slope.
- Do not carry the speaker with a person, luggage, etc. on it.
- Do not let children or infants be near when carrying the speaker.

Wireless Speaker
SRS-XV900

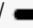

Charging the speaker

The speaker is capable of running on power either from an AC outlet connected by the supplied AC power cord (mains lead) or from the rechargeable built-in lithium-ion battery.

When using the speaker for the first time, be sure to charge the built-in battery for more than 1 hour before turning on the speaker.

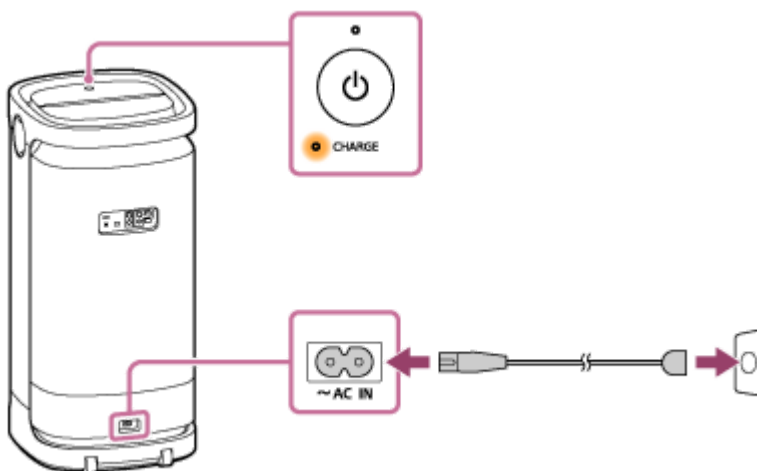
With the built-in battery charged in advance, you can use the speaker solely with battery power.

Hint

- For charging the built-in battery of the speaker, the Battery Care mode option is available in addition to the normal charging method. Battery Care mode limits the maximum charge capacity to approximately 90% and makes the battery life last longer. The playback time available in Battery Care mode is shorter than the time available when the built-in battery is charged by the normal charging method. At the time of purchase, the speaker is not in Battery Care mode.
- While the speaker is turned on, pressing and holding the BATTERY button/  BATTERY CARE button on the rear side of the speaker for about 2 seconds places the speaker into Battery Care mode and you hear voice guidance (Battery Care mode, ON) from the speaker. Pressing and holding the BATTERY button/  BATTERY CARE button once again for about 2 seconds brings the speaker out of Battery Care mode and you hear voice guidance (Battery Care mode, OFF) from the speaker.
- You can place/bring the speaker into/out of Battery Care mode with “Sony | Music Center” as well.

1 Connect the speaker to an AC outlet to charge it.

Connect the AC IN jack on the speaker and an AC outlet with the supplied AC power cord (mains lead).



Battery charging starts and the CHARGE indicator lights up in orange. Charging will complete in about 3 hours* and the indicator will turn off.

* Time that is required to charge the empty built-in battery to its full capacity while the speaker is turned off.

Checking the charging completion

If the built-in battery is fully charged when you connect the speaker to an AC outlet, the CHARGE indicator lights up in orange then turns off after about 1 minute.

Checking the built-in battery level of the rechargeable built-in battery

After pressing the BATTERY button on the rear side of the speaker, when the speaker is turned on, the voice guidance listed below is output from the speaker depending on the remaining built-in battery power.

91% - 100%: "Battery fully charged"

81% - 90% (Battery Care mode): "Battery Care Mode, Fully Charged, Battery About 90%"

81% - 90%: "Battery about 90%"

71% - 80%: "Battery about 80%"

61% - 70%: "Battery about 70%"

51% - 60%: "Battery about 60%"

41% - 50%: "Battery about 50%"

31% - 40%: "Battery about 40%"

21% - 30%: "Battery about 30%"

11% - 20%: "Battery about 20%"

1% - 10%: "Low Battery, Please Recharge Speaker"

Hint

- By using "Sony | Music Center," you can activate/deactivate the voice guidance associated with the remaining battery power that you hear when you turn on the speaker.

Built-in battery life (while the speaker is not in Battery Care mode and a BLUETOOTH connection is established)

- Approx. 25 hours
 - Volume level: 16
 - Sound: MEGA BASS on
 - Lighting: off
- Approx. 12 hours (default)
 - Volume level: 16
 - Sound: MEGA BASS on
 - Lighting: on
- Approx. 5 hours
 - Volume level: 50 (MAX.)
 - Sound: MEGA BASS on
 - Lighting: off
- Approx. 4 hours
 - Volume level: 50 (MAX.)
 - Sound: MEGA BASS on
 - Lighting: on

Built-in battery life (after the built-in battery is charged for 10 minutes)

10 minutes of charging provide approximately 3 hours of music playback. (Provided that the volume level is set to 16, the MEGA BASS sound effect is activated, and the lighting function is deactivated.)

The built-in battery life above is measured using our specified music source.

Actual performance time may vary from the listed time due to the volume, songs played, surrounding temperature, and usage conditions.

When the built-in battery is running low

When the voice guidance says “Low Battery, Please Recharge Speaker” and the CHARGE indicator flashes slowly, the built-in battery is running low and needs to be charged. In this state, the speaker cannot supply power to other devices. When the remaining battery decreases to such a level that the speaker cannot be turned on, you hear voice guidance (Please Recharge Speaker. Power Off.) and the speaker automatically turns off. In such a case, charge the speaker. If the CHARGE indicator flashes in orange 3 times and goes out when you turn on the speaker, the built-in battery is empty and needs to be charged.

Note

- When you use the speaker at a loud volume, the built-in battery may run low even if the speaker is connected to an AC outlet. If you want to use the speaker while charging, lower the volume of the speaker. Otherwise, turn off the speaker and charge the built-in battery sufficiently.
- The maximum power output will be lower when the built-in battery is running low.
- If the ambient temperature is extremely low or high, the speaker will stop charging the built-in battery for safety reasons. It may also stop charging if charging continues for a long period of time. If such an event occurs, bring the temperature up or down to an operating temperature between 5 °C and 35 °C (41 °F and 95 °F), disconnect and reconnect the supplied AC power cord (mains lead), and then let the speaker charge the built-in battery once again.
- Do not charge the speaker's built-in battery in places where the speaker is likely to have water splashed on it. Neither the supplied AC power cord (mains lead) nor the speaker is waterproof.
- Even if you do not intend to use the speaker for a long time, charge the built-in battery sufficiently once every 6 months to maintain its performance.
- When the Android™ smartphone is configured to use only A2DP (Advanced Audio Distribution Profile) for establishing BLUETOOTH connections, the remaining battery power of the speaker is not displayed on the smartphone.

Related Topic

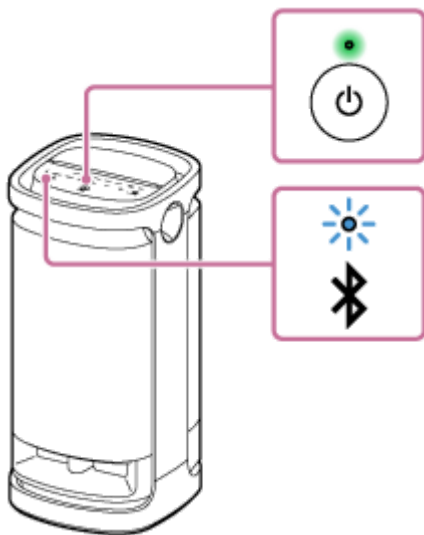
- [Turning the power on](#)
- [Notes on charging](#)
- [What you can do with “Sony | Music Center”](#)


Wireless Speaker
SRS-XV900

Turning the power on

1 Press the (power) button.

The  (power) indicator lights up in green and the  (BLUETOOTH) indicator flashes slowly in blue.



When the speaker has no pairing information, for example when you use the BLUETOOTH function for the first time after purchase, the  (BLUETOOTH) indicator keeps double flashing in blue.



Note

- When the voice guidance says “Low Battery, Please Recharge Speaker” and the CHARGE indicator flashes slowly, the built-in battery is running low and needs to be charged. In this state, the speaker cannot supply power to other devices.
- When the remaining battery decreases to such a level that the speaker cannot be turned on, you hear voice guidance (Please Recharge Speaker. Power Off.) and the speaker automatically turns off. In such a case, charge the speaker.
- If the CHARGE indicator flashes in orange 3 times and goes out when you turn on the speaker, the built-in battery is empty and needs to be charged.

Related Topic

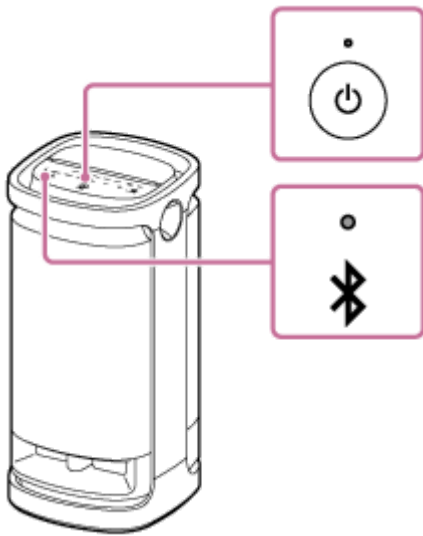
- [Turning the power off](#)
- [Charging the speaker](#)
- [Turning on/off the speaker's light \(Lighting function\)](#)

Wireless Speaker
SRS-XV900

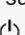
Turning the power off

1 Press the (power) button.

The  (power) indicator and  (BLUETOOTH) indicator turn off.



Hint

- While the speaker is connected to an AC outlet by the supplied AC power cord (mains lead) and the BLUETOOTH standby function is activated, turning off the speaker lights the  (power) indicator in orange and activates the BLUETOOTH standby function*.

* At the time of purchase, the BLUETOOTH standby function is deactivated.

Related Topic

- [Auto Standby \(power saving\) function](#)
- [Using the BLUETOOTH standby \(auto power on\) function](#)

Wireless Speaker
SRS-XV900

Using the BLUETOOTH standby (auto power on) function

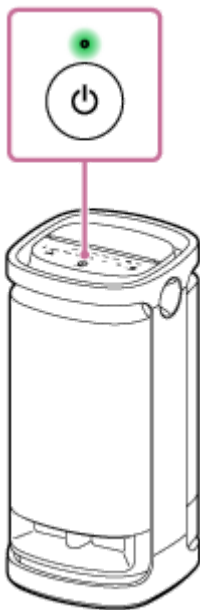
When the BLUETOOTH standby function is activated, the speaker turns on automatically when you operate a BLUETOOTH device, and starts the BLUETOOTH connection.

Before operating the speaker, note the following:

- The BLUETOOTH standby function is activated only while the speaker is connected to an AC outlet by the supplied AC power cord (mains lead). While the speaker is running only on power from the rechargeable built-in battery, the BLUETOOTH standby function is deactivated.
- Pair the speaker with a BLUETOOTH device in advance. If pairing information is not stored in the speaker, such as when the speaker is used for the first time after purchase, the speaker will not enter BLUETOOTH standby mode.

1 Turn on the speaker.

The  (power) indicator lights up in green.



2 Tap [Music Center] on your smartphone, etc. to start up the application.



Music Center

3 Tap [SRS-XV900].



4 Tap [Settings].



5 Tap [Power Option].

6 Tap the check box for [Bluetooth Standby] to select the check box.

The selected check box indicates that the BLUETOOTH standby function is activated.

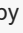
7 Go back to the top screen for the speaker (the screen in step 4).

The change to the settings is put in effect.

To deactivate the BLUETOOTH standby function

In step 6 above, tap the check box for [Bluetooth Standby] to deselect the check box. Going back to the top screen for the selected speaker (the screen in step 4) deactivates the BLUETOOTH standby function.

Hint

- When the BLUETOOTH standby function is activated, the  (power) indicator lights up in orange while the speaker is turned off. (Provided that the speaker is connected to an AC outlet by the supplied AC power cord (mains lead).)

Related Topic

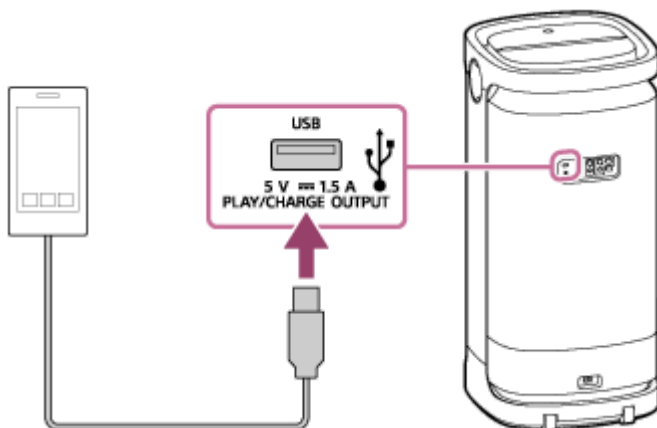
- [Charging the speaker](#)
- [Turning the power on](#)
- [About the indicators](#)

Wireless Speaker
SRS-XV900


Charging a USB device such as a smartphone or iPhone

You can charge a USB device, such as a smartphone or iPhone, by connecting it to the speaker via USB. Even if the speaker is not connected to an AC outlet, its built-in battery can supply power to a USB device.

- 1 **Connect a USB device, such as a smartphone or an iPhone, to the PLAY/CHARGE OUTPUT port (USB) with a USB cable (commercially available).**



- 2 **Turn on the speaker.**

The  (power) indicator lights up in green and the speaker starts supplying power to the connected USB device for battery charging.

Note

- While the speaker is supplying power to the other device, the Auto Standby function is turned off.
- Turning off the speakers stops power supply to the connected USB device.
- The slowly flashing CHARGE indicator indicates that the built-in battery is running low. In this state, the speaker cannot supply power to other devices. Charge the speaker.
- Do not charge the speaker's built-in battery in places where the speaker is likely to have water splashed on it. Neither the supplied AC power cord (mains lead) nor the speaker is waterproof.

Related Topic

- [Charging the speaker](#)
- [Turning the power on](#)
- [Auto Standby \(power saving\) function](#)

Wireless Speaker
SRS-XV900

Auto Standby (power saving) function

In the event of the following, the speaker automatically turns off in 15 minutes to conserve the power of the rechargeable built-in battery.

At the time of purchase, the Auto Standby function is set to on.

When the speaker is in BLUETOOTH mode

- No operation on the speaker.
- The connected BLUETOOTH device is not playing music (audio), nor is it being operated.

When the speaker is in AUDIO IN mode

- No operation on the speaker.
- No music (sound) is played on an audio device connected to the AUDIO IN jack or the music (sound) of an audio device connected to the AUDIO IN jack is too small.

When the speaker is in USB mode

- No operation on the speaker.
- No music (sound) is played on a USB device connected to the PLAY/CHARGE OUTPUT port (USB).

When the speaker is in OPTICAL IN mode

- No operation on the speaker.
- The device connected to the OPTICAL IN connector is turned off.

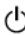
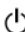
Hint

- You can turn on or off the Auto Standby function by using "Sony | Music Center."

Note

- While a microphone or a guitar is connected to the speaker, the Auto Standby function is turned off.
- While the speaker is supplying power to the other device, the Auto Standby function is turned off.

Turning on/off the Auto Standby function

- 1 Turn on the speaker.
- 2 Touch and hold **▶||** (play) and **-** (volume) on the speaker simultaneously for about 5 seconds.
 - When the Auto Standby function is turned off, the  (power) indicator flashes 3 times in orange.
 - When the Auto Standby function is turned on, the  (power) indicator flashes twice in orange.

Related Topic

- [What you can do with "Sony | Music Center"](#)


5-042-061-11(1) Copyright 2022 Sony Corporation

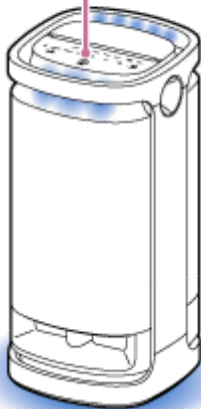
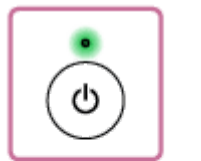
Wireless Speaker
SRS-XV900

Turning on/off the speaker's light (Lighting function)

The speaker lights up with the music to liven up the atmosphere. When you purchase the speaker, the lighting function is set to on.

1 Turn on the speaker.

The  (power) indicator lights up in green.
The speaker lights up.

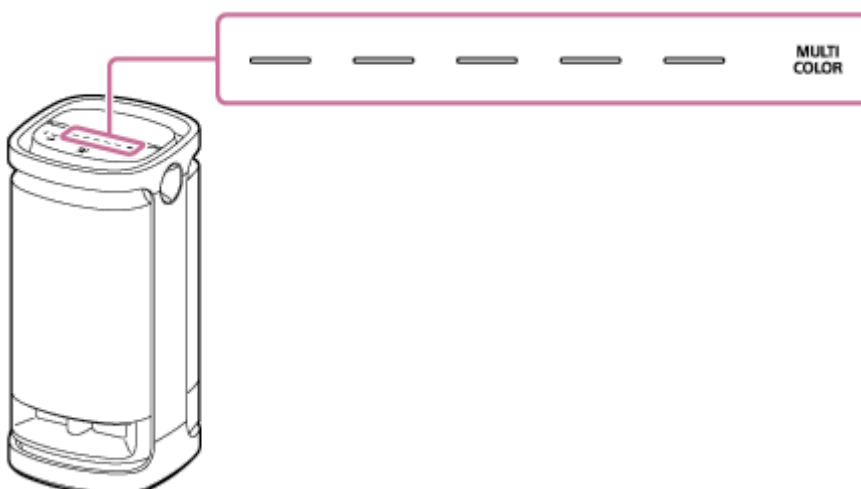


To change the lighting color of the speaker's light

Touch one of the lighting color selectors (red/yellow/green/blue/purple) on the speaker to change the lighting color to the associated one.

Touching MULTI COLOR on the speaker resets the lighting color selected by the lighting color selector to the default setting that makes the speaker's light illuminate in multiple colors.

When the speaker is turned on, this MULTI COLOR setting is selected for the lighting function by default.



To turn off (light off)/turn on (light on) the lighting function

Touch LIGHT on the speaker to turn off/on the lighting function.



Hint

- By using the "Illumination" function on "Sony | Music Center," you can turn on/off the lighting function or choose the various lighting modes.
- By using the "Illumination" function on "Fiestable," you can change the lighting color of the speaker's light as well.

Note

- When the speaker's light seems bright or glaring, turn up the room lights or turn off the lighting function.

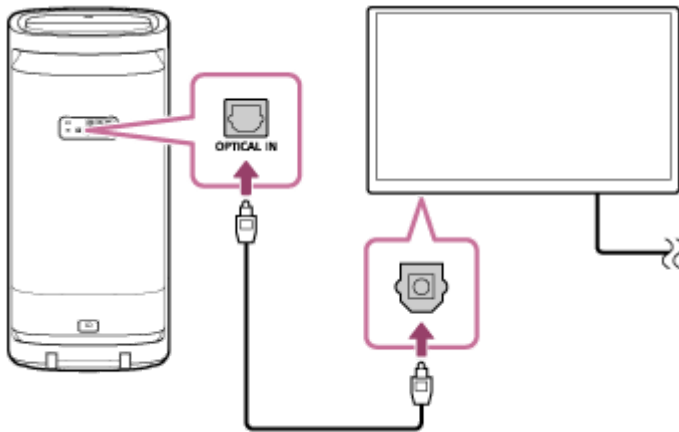
Related Topic

- [What you can do with "Sony | Music Center"](#)

Wireless Speaker
SRS-XV900

Connecting the speaker with a TV

- 1 Connect an optical out jack on your TV and the OPTICAL IN connector on the speaker with the supplied optical digital cable.



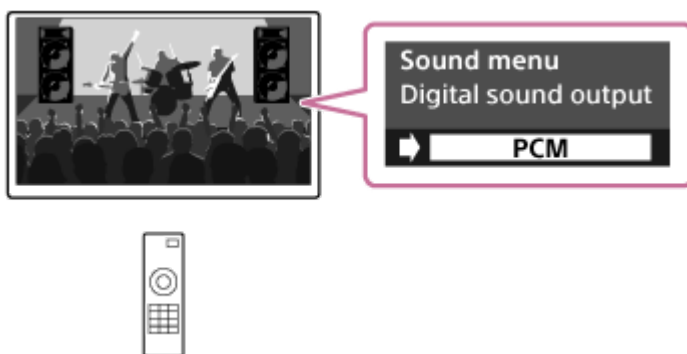
Note

- Check the plugs (📺) of the optical digital cable for the shape and insert them into the respective connector and jack.

- 2 Turn on the TV.

- 3 Change the TV settings.

Specify PCM as the digital audio output method on the TV.



Hint

- For TV operations, refer to the instruction manual supplied with your TV.
- While any method other than PCM is specified as the digital audio output method on the TV, the audio of TV programs, such as movies and sports broadcasting programs, may not be successfully output.

- Listening to TV audio (with use of the TV Sound Booster function)
- Listening to TV audio (without use of the TV Sound Booster function)

5-042-061-11(1) Copyright 2022 Sony Corporation

Wireless Speaker
SRS-XV900

Connecting with a USB device

Compatible USB devices

- USB devices compliant with USB Mass Storage Class
- USB devices formatted with the FAT (except exFAT) file system

Some USB devices may not work with the speaker even if the devices meet the above conditions.
Using iPhone devices via USB connection is not supported.

Note

- When USB cable connection is necessary, use the USB cable supplied with the USB device. See the operating instructions supplied with the USB device for details on the operation method.
- Do not connect the speaker and the USB device through a USB hub.
- When the USB device is connected, the speaker reads all the files on the USB device. If there are many folders or files on the USB device, it may take a long time to finish reading the USB device.
- With some connected USB devices, there may be a delay before an operation is performed by this speaker.
- Compatibility with all encoding/writing software cannot be guaranteed. If audio files on the USB device were originally encoded with incompatible software, those files may produce noise or interrupted audio, or may not play at all.
- This speaker does not necessarily support all the functions provided in a connected USB device.

- 1 Touch USB on the speaker.
- 2 Connect a USB device to the PLAY/CHARGE OUTPUT port (USB).

Related Topic

- [Listening to music of a USB device](#)

Wireless Speaker
SRS-XV900

Pairing and connecting with BLUETOOTH® devices

Pairing is the process required to mutually register the information on BLUETOOTH devices to be connected wirelessly. To pair with a second or subsequent BLUETOOTH device, perform the following pairing procedure for each device. The pairing information is stored on the speaker when the speaker is turned off.

Before operating the speaker, be sure to do the following:

- Place the BLUETOOTH device within 1 m (3.2 ft) of the speaker.
- Connect the speaker to an AC outlet with the supplied AC power cord (mains lead). Or charge the rechargeable built-in battery sufficiently.
- To avoid any sudden loud sound output from the speaker, turn down the volume of both the BLUETOOTH device and the speaker or stop music playback.
Depending on the BLUETOOTH device, the volume of the device may be synchronized with the speaker volume when music playback starts after a BLUETOOTH connection is established between the BLUETOOTH devices and the speaker.
- Prepare the operating instructions supplied with the BLUETOOTH device for reference.

1 Turn on the speaker.



2 Touch (BLUETOOTH) on the speaker.

3 Check the status of the (BLUETOOTH) indicator.

When the indicator is double flashing



In the event that the speaker is paired with a BLUETOOTH device for the first time after purchase or in the event after the speaker is initialized (the speaker has no pairing information), the speaker automatically enters pairing mode when it is turned on. Proceed to step 5 .

When the indicator is flashing slowly



The speaker is searching for BLUETOOTH connections.

- To pair the speaker with a second or subsequent BLUETOOTH device (when the speaker has pairing information of other BLUETOOTH devices), proceed to step 4 .
- To reconnect the speaker with one of the BLUETOOTH devices that have been paired with the speaker before, proceed to step 5 .
The speaker will automatically be connected just by turning on the BLUETOOTH function on the BLUETOOTH device. Depending on the BLUETOOTH device, the speaker may be reconnected with the device right after it is turned on. For details, refer to the operating instructions supplied with your BLUETOOTH device.

When the indicator stays lit



The speaker has been connected to the BLUETOOTH device.

To connect to other BLUETOOTH devices, follow one of the procedures below.

- To pair the speaker with a second or subsequent BLUETOOTH device (when the speaker has pairing information of other BLUETOOTH devices), proceed to step **4**.
- To reconnect the speaker with one of the BLUETOOTH devices that have been paired with the speaker before, proceed to step **5**. The speaker will automatically be connected just by turning on the BLUETOOTH function on the BLUETOOTH device.

4 Touch and hold  (BLUETOOTH) on the speaker until you hear voice guidance (BLUETOOTH pairing) from the speaker and the  (BLUETOOTH) indicator starts double flashing (pairing mode).




5 Perform the pairing procedure on the BLUETOOTH device to detect the speaker.

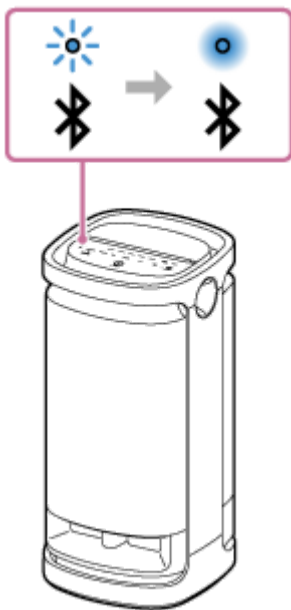
When a list of detected devices appears on the display of the BLUETOOTH device, select “SRS-XV900.”

If a passkey* is required on the display of the BLUETOOTH device, enter “0000.”

* The passkey may be called a “passcode,” “PIN code,” “PIN number,” or “password.”

6 Make the BLUETOOTH connection from the BLUETOOTH device.

When the BLUETOOTH connection is established, you hear voice guidance (BLUETOOTH connected) from the speaker and the activity of the  (BLUETOOTH) indicator changes from flashing to lit.

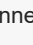


If the BLUETOOTH connection is not established, repeat from step **4**.

Hint

- As long as the BLUETOOTH function is activated on a BLUETOOTH device that has previously been connected with the speaker, the speaker is reconnected with the device right after the speaker is turned on.
- The above instructions on the BLUETOOTH device are provided as an example. For details, refer to the operating instructions supplied with the BLUETOOTH device.
- You can perform operations including establishment and disconnection of BLUETOOTH connections by using “Sony | Music Center.”
- You can connect the speaker concurrently with up to 2 BLUETOOTH devices. (Multipoint connection)

Note

- For Apple iOS devices, the speaker is compatible with iOS 10.0 or later. A BLUETOOTH connection is not available on the devices with iOS 9.x or earlier.
- The pairing mode of the speaker is released after about 5 minutes and the  (BLUETOOTH) indicator flashes slowly. However, when the speaker has no pairing information, such as at the factory settings, the pairing mode is not released. If the pairing mode is released before finishing the process, repeat from step **4**.
- The passkey of the speaker is “0000.” If a passkey besides “0000” is set on the BLUETOOTH device, pairing cannot be done with the speaker.
- Once the BLUETOOTH devices are paired, there is no need to pair them again, except in the following cases:
 - Pairing information has been deleted after repair, etc.
 - The speaker is already paired with 8 devices and another device is to be paired.
The speaker can be paired with up to 8 devices. When a new device is paired in addition to 8 paired devices, the pairing information of the earliest device connected via a BLUETOOTH connection is replaced by the information of the new one.
 - The pairing information of the speaker has been deleted from the BLUETOOTH device.
 - The speaker is initialized.
All pairing information will be deleted. If you initialize the speaker, it may not be able to connect your BLUETOOTH device. In this case, erase the pairing information of the speaker on your BLUETOOTH device, and then perform the pairing procedure

again.

- The speaker can be paired with multiple devices, but can only play music from one paired device at a time.
- When using the Stereo Pair function or the Party Connect function, you cannot use the multipoint connection capability.

Related Topic

- [Connecting the speaker concurrently with 2 BLUETOOTH devices \(multipoint connection\)](#)
- [Listening to music of a device via BLUETOOTH connection](#)
- [Terminating the BLUETOOTH connection \(After use\)](#)

5-042-061-11(1) Copyright 2022 Sony Corporation

Wireless Speaker
SRS-XV900

Connecting with a computer via a BLUETOOTH connection (Windows®)


Pairing is the process required to mutually register the information on BLUETOOTH devices to be connected wirelessly. It is necessary to pair a device with the speaker to be able to make a BLUETOOTH connection for the first time. Perform the same procedures to pair to other devices.

The pairing information is stored on the speaker when the speaker is turned off.

Supported operation systems

Windows 10, Windows 8.1

Do the following before starting.

- Place your computer within 1 m (3.2 ft) of the speaker.
- Connect the speaker to an AC outlet with the supplied AC power cord (mains lead). Or charge the rechargeable built-in battery sufficiently.
- Prepare the operating instructions supplied with the computer for reference.
- To avoid any sudden loud sound output from the speaker, turn down the volume of both the BLUETOOTH device and the speaker or stop music playback.
- Set the speaker of your computer to on.
If the speaker of your computer is set to  (mute), sound does not output on the BLUETOOTH speaker.

– When the speaker of your computer is set to on:



1 Turn on the speaker.



2 Touch (BLUETOOTH) on the speaker.

3 Check the  (BLUETOOTH) indicator for activity.

When the indicator is double flashing



After you pair the speaker with a BLUETOOTH device for the first time since purchase or initialize the speaker (the speaker has no pairing information), the speaker automatically enters pairing mode when it is turned on. Proceed to step **5**.

When the indicator is flashing slowly



The speaker is searching for BLUETOOTH connections.

- To pair the speaker with a second or subsequent BLUETOOTH device (when the speaker has pairing information of other BLUETOOTH devices), proceed to step **4**.
- To reconnect the speaker with one of the BLUETOOTH devices that have been paired with the speaker before, proceed to step **5**.
Depending on the BLUETOOTH device, the speaker may be reconnected with the device right after it is turned on. For details, refer to the operating instructions supplied with your BLUETOOTH device.

When the indicator stays lit



The speaker is already connected with one of the BLUETOOTH devices.

To connect the speaker with another BLUETOOTH device, do either of the following:

- To pair the speaker with a second or subsequent BLUETOOTH device (when the speaker has pairing information of other BLUETOOTH devices), proceed to step **4** .
- To reconnect the speaker with one of the BLUETOOTH devices that have been paired with the speaker before, proceed to step **5** .

4 Touch and hold **⌘** (BLUETOOTH) on the speaker until you hear voice guidance (BLUETOOTH pairing) from the speaker and the **⌘** (BLUETOOTH) indicator starts double flashing (pairing mode).

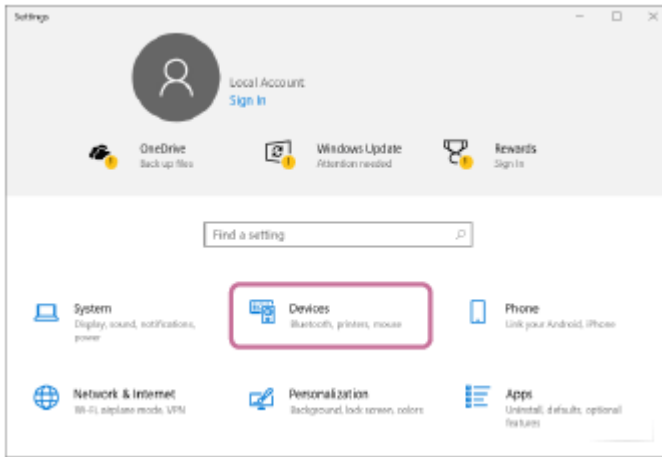


5 Wake the computer up if the computer is in standby (sleep) or hibernation mode.

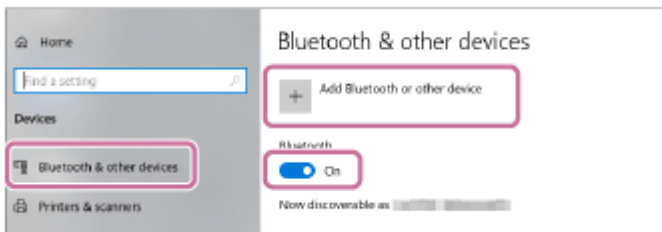
6 Register the speaker to the computer.

For Windows 10

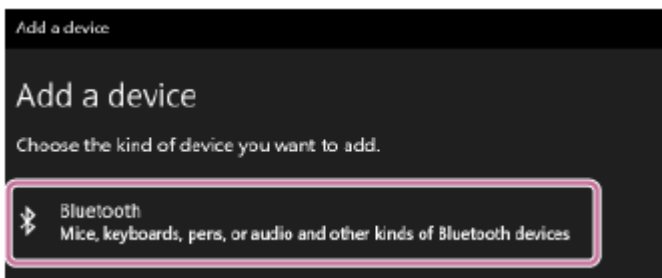
1. Click the [Start] button, then [Settings].
2. Click [Devices].



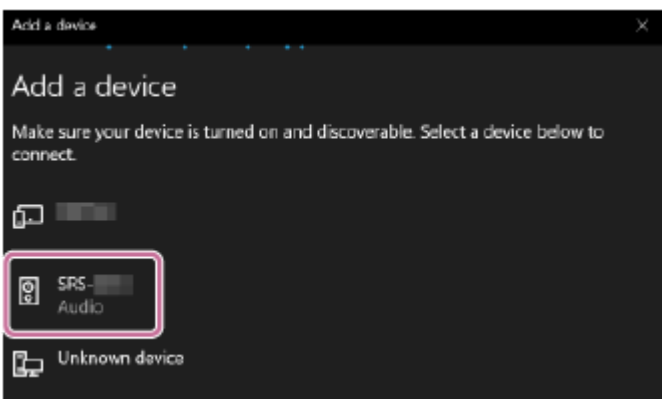
3. Click the [Bluetooth & other devices] tab, click the “Bluetooth” switch to turn on the BLUETOOTH function, and then click [Add Bluetooth or other device].



4. Click [Bluetooth].



5. Select [SRS-XV900].

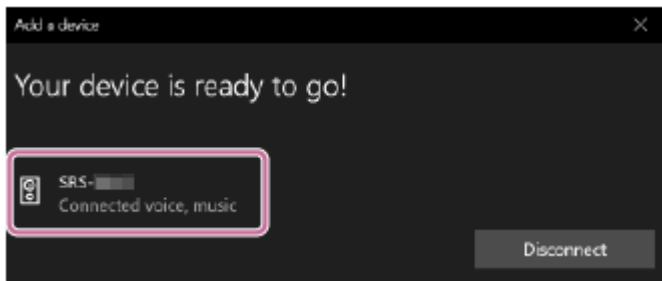


If a passkey* is required, enter “0000.”

If [SRS-XV900] does not appear, perform the operation again from step 4 .

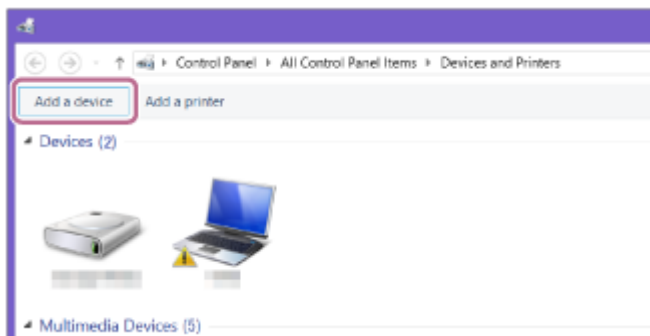
* The passkey may be called a “passcode,” “PIN code,” “PIN number,” or “password.”

6. After pairing, the BLUETOOTH connection establishes automatically and [Connected music] or [Connected voice, music] will be displayed on the screen. Proceed to step 7 .

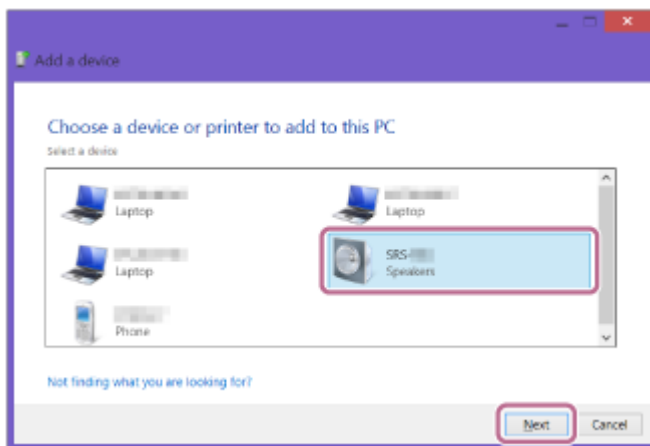


For Windows 8.1

1. Right-click on [Start], and then click [Control Panel].
When [All Control Panel Items] is displayed, select [Devices and Printers].
If the [Control Panel] screen appears instead of [All Control Panel Items], select [Large icons] or [Small icons] from the [View by] menu in the top right corner of the screen.
2. Click [Add a device].



3. Select [SRS-XV900] and click [Next].

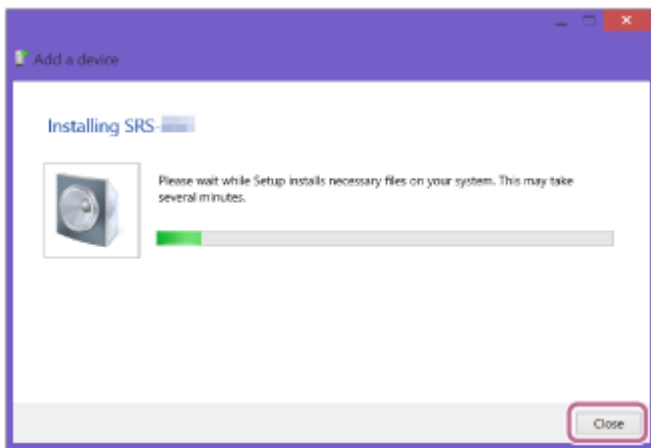


If a passkey* is required, enter "0000."

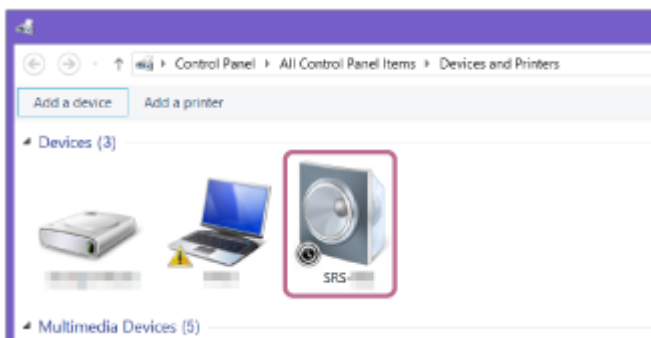
If [SRS-XV900] does not appear, perform the operation again from step 4 .

* The passkey may be called a "passcode," "PIN code," "PIN number," or "password."

4. When the following screen appears, click [Close].
The computer begins installing the driver.

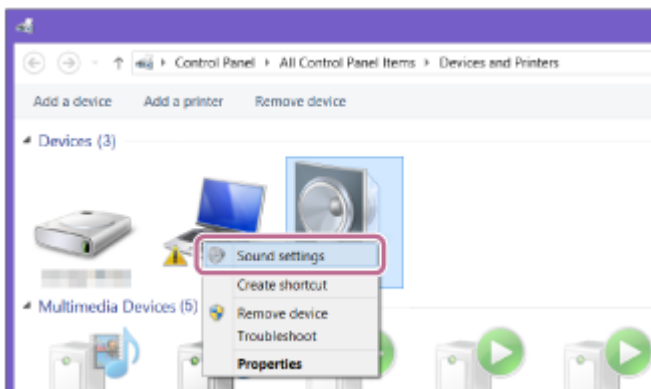


The “Ⓢ” mark will appear in the bottom left of the [SRS-XV900] icon during installation. When the “Ⓢ” mark disappears, driver installation is complete. Proceed to step 6-5.



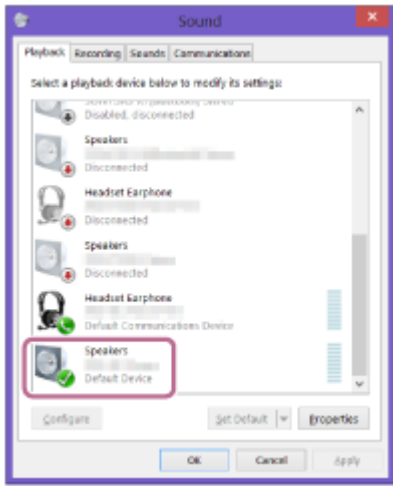
Depending on the computer, installation may take time. If driver installation takes too much time, the Auto Standby function of the speaker will cause it to turn off automatically. If this happens, turn on the speaker again.

5. Right-click on [SRS-XV900] in [Devices] and select [Sound settings] from the menu that appears.

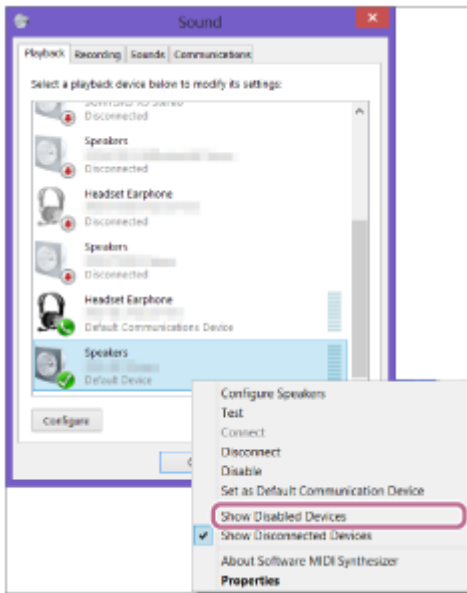


6. Confirm [SRS-XV900 Stereo] on the [Sound] screen.

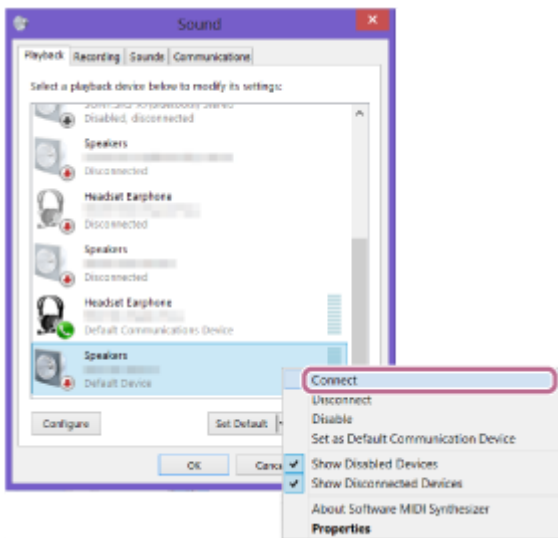
- If there is a checkmark (green) on [SRS-XV900 Stereo], proceed to step 7.



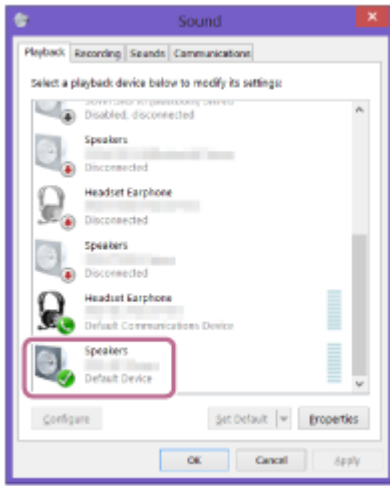
- If there is not a checkmark (green) on [SRS-XV900 Stereo], proceed to step 6 -7.
- If [SRS-XV900 Stereo] does not appear, right-click on the [Sound] screen, and select [Show Disabled Devices] from the menu that appears. Then proceed to step 6 -7.



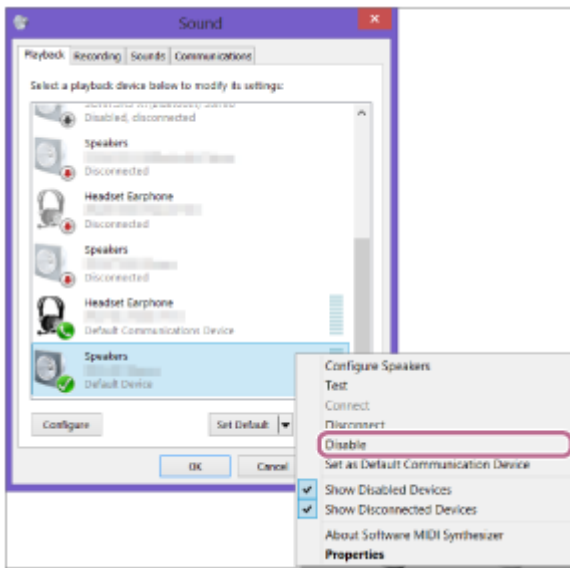
7. Right-click on [SRS-XV900 Stereo], and select [Connect] from the menu that appears.




When the speaker is connected, a checkmark will appear on [SRS-XV900 Stereo] on the [Sound] screen. Proceed to step 7 .

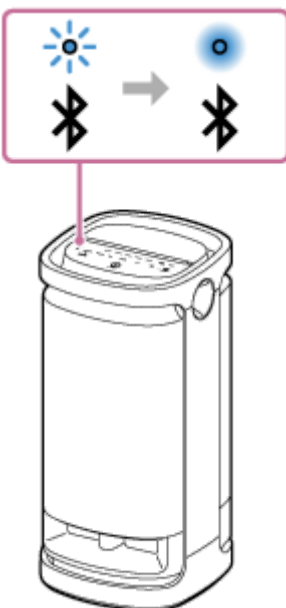


If you cannot click [Connect] for [SRS-XV900 Stereo], select [Disable] for the [Default Device] that currently has a checkmark (green).



7 Follow the on-screen instructions to establish a BLUETOOTH connection.

When the BLUETOOTH connection is established, you hear voice guidance (BLUETOOTH connected) from the speaker and the activity of the  (BLUETOOTH) indicator changes from flashing to lit.




If the connection attempt fails, repeat the procedure from step **4**.

Hint

- The above instructions on the computer are provided as an example. For details, refer to the operating instructions supplied with your computer. In addition, not all the computers are tested and found compatible with the above procedure and the procedure is not applicable to home-built computers.
- You can connect the speaker concurrently with up to 2 BLUETOOTH devices. (Multipoint connection)

Note

- The pairing mode of the speaker is released after about 5 minutes and the  (BLUETOOTH) indicator flashes slowly. However, when the speaker has no pairing information, such as at the factory settings, the pairing mode is not released. If the pairing mode is released before finishing the process, repeat from step ④.
- Once BLUETOOTH devices are paired, there is no need to pair them again, except in the following cases:
 - Pairing information has been deleted after repair, etc.
 - The speaker is already paired with 8 devices and another device is to be paired.
The speaker can be paired with up to 8 devices. When a new device is paired in addition to 8 paired devices, the pairing information of the earliest device connected via a BLUETOOTH connection is replaced by the information of the new one.
 - The pairing information with the speaker has been deleted from the BLUETOOTH device.
 - The speaker is initialized.
All pairing information will be deleted. If you initialize the speaker, it may not be able to connect your computer. In this case, erase the pairing information of the speaker on your computer, and then perform the pairing procedure again.
- The speaker can be paired with multiple devices, but can only play music from one paired device at a time.
- The passkey of the speaker is "0000." If a passkey besides "0000" is set on the BLUETOOTH device, pairing cannot be done with the speaker.
- When using the Stereo Pair function or the Party Connect function, you cannot use the multipoint connection capability.

Related Topic

- [Connecting the speaker concurrently with 2 BLUETOOTH devices \(multipoint connection\)](#)
- [Listening to music of a device via BLUETOOTH connection](#)
- [Terminating the BLUETOOTH connection \(After use\)](#)

Wireless Speaker
SRS-XV900

Connecting with a computer via a BLUETOOTH connection (Mac)


Pairing is the process required to mutually register the information on BLUETOOTH devices to be connected wirelessly. It is necessary to pair a device with the speaker to be able to make a BLUETOOTH connection for the first time. Perform the same procedures to pair to other devices.

The pairing information is stored on the speaker when the speaker is turned off.

Supported operation systems

macOS Catalina (version 10.15)

Do the following before starting.

- Place your computer within 1 m (3.2 ft) of the speaker.
- Connect the speaker to an AC outlet with the supplied AC power cord (mains lead). Or charge the rechargeable built-in battery sufficiently.
- Prepare the operating instructions supplied with the computer for reference.
- To avoid any sudden loud sound output from the speaker, turn down the volume of both the BLUETOOTH device and the speaker or stop music playback.
- Set the speaker of your computer to on.
If the speaker of your computer is set to  (mute), sound does not output on the BLUETOOTH speaker.

– When the speaker of your computer is set to on:



1 Turn on the speaker.



2 Touch (BLUETOOTH) on the speaker.

3 Check the  (BLUETOOTH) indicator for activity.

When the indicator is double flashing



After you pair the speaker with a BLUETOOTH device for the first time since purchase or initialize the speaker (the speaker has no pairing information), the speaker automatically enters pairing mode when it is turned on. Proceed to step **5**.

When the indicator is flashing slowly



The speaker is searching for BLUETOOTH connections.

- To pair the speaker with a second or subsequent BLUETOOTH device (when the speaker has pairing information of other BLUETOOTH devices), proceed to step **4**.
- To reconnect the speaker with one of the BLUETOOTH devices that have been paired with the speaker before, proceed to step **5**.
Depending on the BLUETOOTH device, the speaker may be reconnected with the device right after it is turned on. For details, refer to the operating instructions supplied with your BLUETOOTH device.



When the indicator stays lit



The speaker is already connected with one of the BLUETOOTH devices.


To connect the speaker with another BLUETOOTH device, do either of the following:

- To pair the speaker with a second or subsequent BLUETOOTH device (when the speaker has pairing information of other BLUETOOTH devices), proceed to step **4** .
- To reconnect the speaker with one of the BLUETOOTH devices that have been paired with the speaker before, proceed to step **5** .

4 Touch and hold  (BLUETOOTH) on the speaker until you hear voice guidance (BLUETOOTH pairing) from the speaker and the  (BLUETOOTH) indicator starts double flashing (pairing mode).

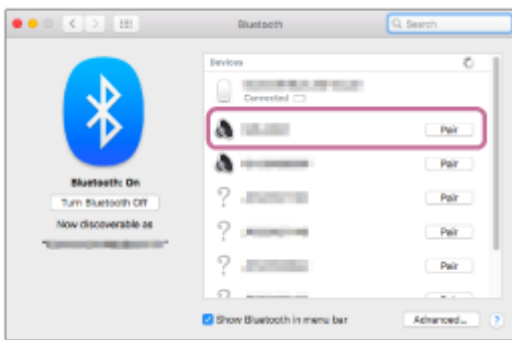


5 Search for the speaker on the computer.


1. Click [ (System Preferences)] - [Bluetooth] in the taskbar on the right-bottom of the screen.

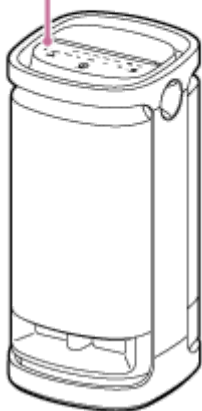


2. Select [SRS-XV900] from the Bluetooth screen, then click [Pair].



6 Follow the on-screen instructions to establish a BLUETOOTH connection.

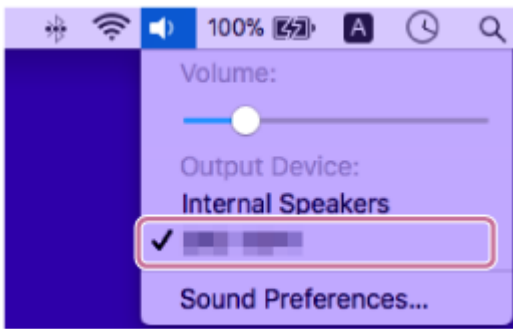
When the BLUETOOTH connection is established, you hear voice guidance (BLUETOOTH connected) from the speaker and the activity of the  (BLUETOOTH) indicator changes from flashing to lit.



If the connection attempt fails, repeat the procedure from step 4 .

7 Click the speaker icon in the top-right of the screen and select [SRS-XV900].


You can enjoy playing back music, etc. from your computer.



Hint

- The above instructions on the computer are provided as an example. For details, refer to the operating instructions supplied with your computer. In addition, not all the computers are tested and found compatible with the above procedure and the procedure is not applicable to home-built computers.
- You can connect the speaker concurrently with up to 2 BLUETOOTH devices. (Multipoint connection)

Note

- The pairing mode of the speaker is released after about 5 minutes and the  (BLUETOOTH) indicator flashes slowly. However, when the speaker has no pairing information, such as at the factory settings, the pairing mode is not released. If the pairing mode is released before finishing the process, repeat from step 4.
- Once BLUETOOTH devices are paired, there is no need to pair them again, except in the following cases:
 - Pairing information has been deleted after repair, etc.
 - The speaker is already paired with 8 devices and another device is to be paired.
The speaker can be paired with up to 8 devices. When a new device is paired in addition to 8 paired devices, the pairing information of the earliest device connected via a BLUETOOTH connection is replaced by the information of the new one.
 - The pairing information with the speaker has been deleted from the BLUETOOTH device.
 - The speaker is initialized.
All pairing information will be deleted. If you initialize the speaker, it may not be able to connect your computer. In this case, erase the pairing information of the speaker on your computer, and then perform the pairing procedure again.
- The speaker can be paired with multiple devices, but can only play music from one paired device at a time.
- The passkey of the speaker is "0000." If a passkey besides "0000" is set on the BLUETOOTH device, pairing cannot be done with the speaker.
- When using the Stereo Pair function or the Party Connect function, you cannot use the multipoint connection capability.

Related Topic

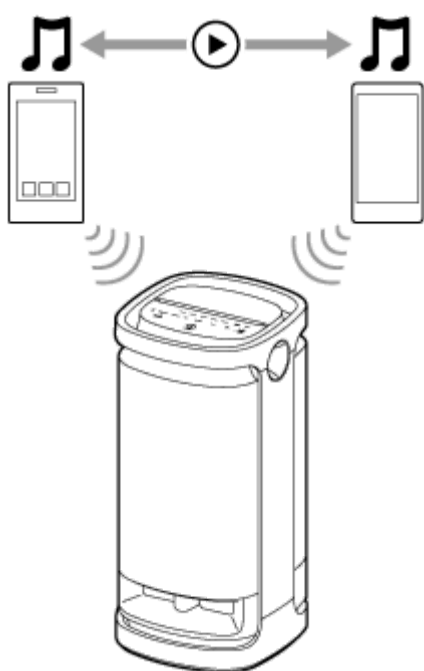
- [Connecting the speaker concurrently with 2 BLUETOOTH devices \(multipoint connection\)](#)
- [Listening to music of a device via BLUETOOTH connection](#)
- [Terminating the BLUETOOTH connection \(After use\)](#)

Wireless Speaker
SRS-XV900

Connecting the speaker concurrently with 2 BLUETOOTH devices (multipoint connection)

While the speaker is connected concurrently with 2 BLUETOOTH devices via BLUETOOTH connection, you can do the following:

- **Switching the music playback source between 2 devices**
You can switch the music playback source from one device to the other without reestablishing the BLUETOOTH reconnection.




Connecting the speaker concurrently with 2 devices via BLUETOOTH connection

1 Connect the speaker with the first BLUETOOTH device.

For details about the BLUETOOTH connection procedure, see one of the following that is applicable to your device.

- [Pairing and connecting with BLUETOOTH® devices](#)
- [Connecting with a computer via a BLUETOOTH connection \(Windows®\)](#)
- [Connecting with a computer via a BLUETOOTH connection \(Mac\)](#)


2 While keeping the speaker connected with the first BLUETOOTH device, touch and hold (BLUETOOTH) on the speaker.

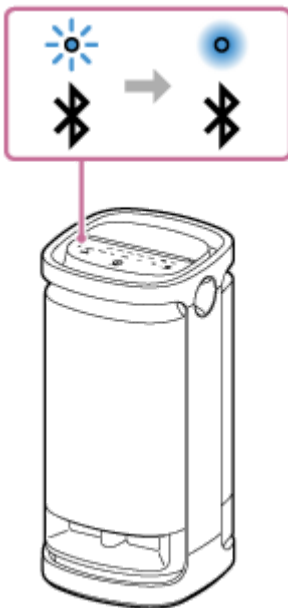
You hear voice guidance (BLUETOOTH pairing) from the speaker and the  (BLUETOOTH) indicator starts double flashing (pairing mode).



3 Operate the second BLUETOOTH device to search for the speaker.

4 Follow the on-screen instructions to establish a BLUETOOTH connection.

When the BLUETOOTH connection is established, you hear voice guidance (BLUETOOTH 2nd Device Connected) from the speaker and the activity of the  (BLUETOOTH) indicator changes from flashing to lit.



Changing the BLUETOOTH devices in multipoint connection

While keeping the speaker connected with 2 devices in multipoint connection, you can attempt to connect another device via BLUETOOTH connection.

When you operate the speaker and the third device in an attempt to establish a BLUETOOTH connection, the BLUETOOTH connection with one of the 2 devices used for the previous music playback is retained and the BLUETOOTH connection with the other device is disconnected. Then, a BLUETOOTH connection is established between the speaker and the third device.

Music playback while the speaker is connected with 2 devices in multipoint connection

- When you operate the speaker to play music, music starts playing on one of the devices in multipoint connection that was used for the previous playback.

- To play music on the other (second) device in multipoint connection, operate the second one to start music playback. Depending on the condition, you may still hear music playing on the same (first) device from the speaker after you operate the second device to start playback. In such a case, stop the playback on the first one. Then, you can listen to music playing on the second one.

About voice guidance

While the speaker is connected with devices in multipoint connection, you hear the following voice guidance from the speaker in accordance with the conditions.

- When a BLUETOOTH connection is established between the speaker and the first device: "BLUETOOTH Device1 Connected"
- When a BLUETOOTH connection is established between the speaker and the second device: "BLUETOOTH Device2 Connected"
- When the BLUETOOTH connection with the first device is disconnected: "BLUETOOTH Device1 Disconnected"
- When the BLUETOOTH connection with the second device is disconnected: "BLUETOOTH Device2 Disconnected"
- When the BLUETOOTH connection with the first device is disconnected and replaced by the BLUETOOTH connection established with the third device: "BLUETOOTH Device1 Replaced"
- When the BLUETOOTH connection with the second device is disconnected and replaced by the BLUETOOTH connection established with the third device: "BLUETOOTH Device2 Replaced"

Hint

- As long as the BLUETOOTH function is activated on a BLUETOOTH device that has previously been connected with the speaker, the speaker is reconnected with the device right after the speaker is turned on.
- You can perform operations including establishment and disconnection of BLUETOOTH connections by using "Sony | Music Center."

Note

- When using the Stereo Pair function or the Party Connect function, you cannot use the multipoint connection capability.
- Depending on the BLUETOOTH device, you may not be able to use the multipoint connection capability.
- The multipoint connection cannot be disabled.

Related Topic

- [Pairing and connecting with BLUETOOTH® devices](#)
- [Connecting with a computer via a BLUETOOTH connection \(Windows®\)](#)
- [Connecting with a computer via a BLUETOOTH connection \(Mac\)](#)

Wireless Speaker
SRS-XV900

Listening to TV audio (with use of the TV Sound Booster function)

Sony's unique function, "TV Sound Booster," lets you enjoy the enhanced sound of audio visual contents, such as live performance videos and movies. Owing to the deep bass and realistic high-pitched sounds spreading around, you can taste a true audio visual experience that makes you feel as if you are attending a live performance.


Use the "Sony | Music Center" to make setup of the TV Sound Booster function.

Be sure to install "Sony | Music Center" on your mobile device, such as a smartphone, in advance.

1 Connect the speaker with a TV.

For details, refer to [Connecting the speaker with a TV](#).

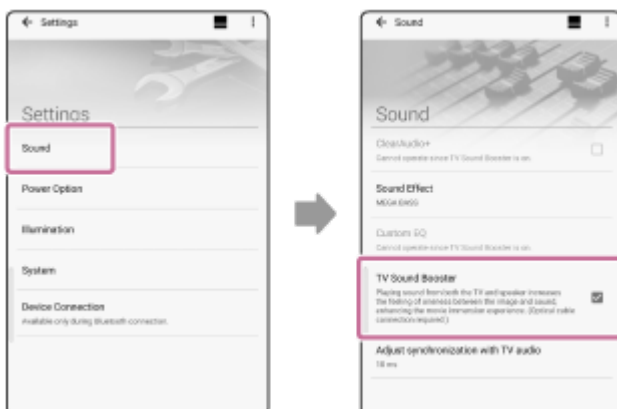
2 Activate the TV Sound Booster function of the speaker.

1. Press the  (power) button to turn on the speaker.
2. Pair the speaker with your BLUETOOTH device, such as a smartphone, and establish a connection.
When a BLUETOOTH connection is established, you hear voice guidance (BLUETOOTH connected) from the speaker.
3. Tap [Music Center] on your smartphone, etc. to start up the application.



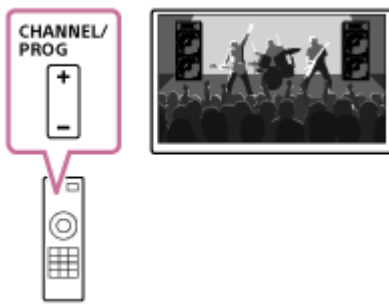
Music Center

4. Tap [SRS-XV900].
5. Tap [Settings] - [Sound], and then activate [TV Sound Booster].




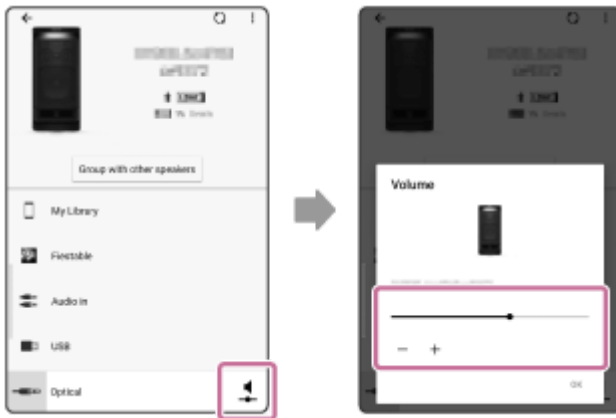
3 Perform TV operations.

View/play contents. Adjust the TV volume to your preference using the remote control supplied with your TV.



4 Adjust the sound volume of the speaker.

Tap  and then adjust the sound volume.



5 Adjust synchronization between the TV audio and the speaker audio.

On “Sony | Music Center,” tap [SRS-XV900] – [Settings] - [Sound] - [Adjust synchronization with TV audio], and then select the optimal delay adjustment time length.

Note

- If calibration of synchronization by “Sony | Music Center” does not solve the issue of audio delay between the TV and the speaker, see [Video and audio are not synchronized; or audio sounds duplicated](#).
- While the TV Sound Booster function is activated, the 4 speaker components at the front top (2 tweeter speakers and 2 midrange speakers) are disabled to optimize the audio output for the combined use with a connected TV.
- Making setup of the TV Sound Booster function with “Sony | Music Center” places the speaker automatically into OPTICAL IN mode.
If OPTICAL IN on the speaker is flashing, the device connected to the OPTICAL IN connector is not compatible. In such a case, refer to the instruction manual supplied with your device.

Hint

- Instead of using “Sony | Music Center,” you can use the touch panel on the speaker to activate/deactivate the TV Sound Booster function or adjust the sound volume as well. Touch TV SOUND BOOSTER or +/- (volume) on the speaker.
- When the bass sound seems too strong or weak, adjust the sound volume of the speaker.
- When the human voice, such as the singing or speaking voice, seems hard to understand, adjust the TV volume.

Related Topic

- Connecting the speaker with a TV
- Pairing and connecting with BLUETOOTH® devices
- What you can do with “Sony | Music Center”
- Installing “Sony | Music Center”
- No sound comes out from the speaker
- The sound volume is low
- Neither the Karaoke function nor the DJ Control function are available for use while the TV Sound Booster function is activated

5-042-061-11(1) Copyright 2022 Sony Corporation

Wireless Speaker
SRS-XV900

Listening to TV audio (without use of the TV Sound Booster function)

1 Connect the speaker with a TV.

For details, refer to [Connecting the speaker with a TV](#).

2 Turn on the speaker.



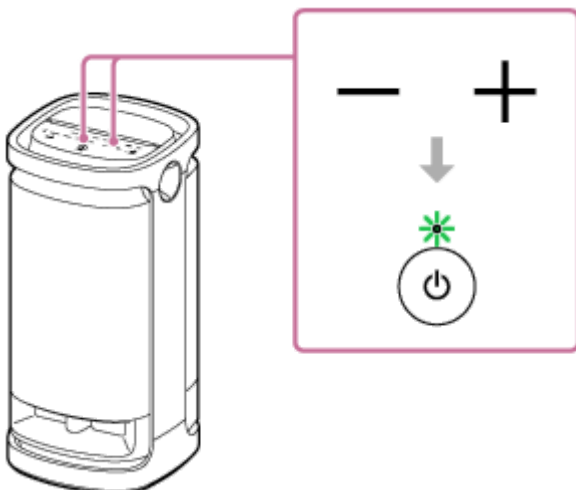
3 Touch OPTICAL IN on the speaker.

4 Perform TV operations.

View/play contents.

5 Adjust the sound volume of the speaker.

Use +/- (volume) on the speaker for sound volume adjustment.



Note

- To output TV audio in OPTICAL IN mode without using the TV Sound Booster function, turn off the sound volume of the TV.
- If OPTICAL IN on the speaker is flashing, the format of the output signals from the device, which is connected to the OPTICAL IN connector, is not compatible. In such a case, refer to the instruction manual supplied with your device.

Hint

- When sound comes out both from the speaker and the TV, turn off the sound volume of the TV.
- You can adjust the sound volume with “Sony | Music Center” as well.

Related Topic

- [Connecting the speaker with a TV](#)
- [Pairing and connecting with BLUETOOTH® devices](#)
- [What you can do with “Sony | Music Center”](#)
- [Installing “Sony | Music Center”](#)

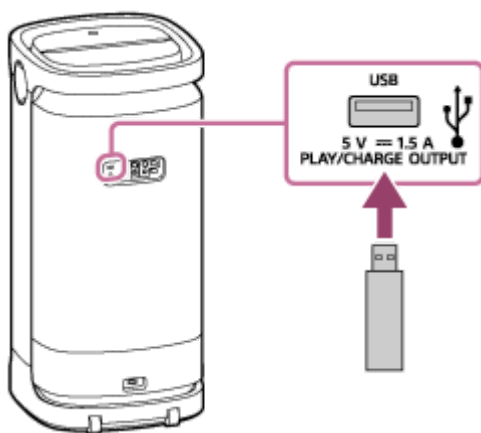
Wireless Speaker
SRS-XV900

Listening to music of a USB device

The speaker supports the following audio file formats.

- MP3: file extension [.mp3]
- WMA: file extension [.wma]
- WAV: file extension [.wav]

1 Connect a USB device to the PLAY/CHARGE OUTPUT port (USB).



2 Touch USB on the speaker.

3 Touch ► (play) on the speaker to start playback.

You can use “Sony | Music Center” for playback operations or effortless music selection from the music list on the USB device.

With ► (play) on the speaker, you can perform the following operations as well.

- Pausing the playback
While playback is in progress, touch ► (play) on the speaker. To restart the playback, touch it once again.
- Skipping to the next track
While playback is in progress, touch ► (play) on the speaker twice in a quick succession.
- Skipping to the beginning of the current or previous track
While playback is in progress, touch ► (play) on the speaker 3 times in a quick succession.

4 Touch +/- (volume) on the speaker to adjust the volume.

Hint

- While loading from the connected device is in progress, USB on the speaker keeps flashing.

Note

- The speaker is unable to play audio files on the USB device in the event of the following:
 - The total number of audio files on the connected USB device exceeds 2 000.
 - The number of folders on the connected USB device exceeds 300, including the “ROOT” folder.
The above figures vary depending on the file and folder structure. On the USB device containing audio files, do not save files of different types or unnecessary folders.
- The speaker is capable of playing audio files contained in up to the 8th level sub-folders.
- Folders containing no audio files are skipped for playback.
- If the actual content of a file with the supported file extension is not what it should be, playing the file may cause the speaker to emit noises or to malfunction.

Related Topic

- [Connecting with a USB device](#)

Wireless Speaker
SRS-XV900

Listening to music of a device via BLUETOOTH connection

You can enjoy listening to music of a BLUETOOTH device and operate it by the speaker via BLUETOOTH connection if it supports the following BLUETOOTH profiles.

A2DP (Advanced Audio Distribution Profile)

Enables you to enjoy high-quality audio contents wirelessly.


AVRCP (Audio Video Remote Control Profile)

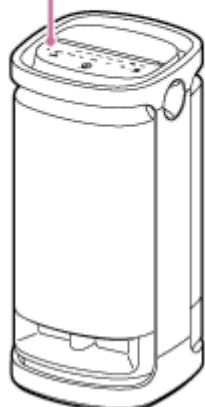
Enables you to adjust the volume and operate to play, pause or skip to the beginning of the next/current track. Operations may vary depending on the BLUETOOTH device. Refer also to the operating instructions supplied with the BLUETOOTH device.

Note

- Make sure beforehand that the volume on the BLUETOOTH device and speaker are set to a moderate level to avoid sudden loud sound output from the speaker. Depending on the BLUETOOTH device, adjusting the volume of the speaker may not be possible on the BLUETOOTH device while playback on the device is stopped/paused.

1 Connect the speaker with the BLUETOOTH device.

When the BLUETOOTH connection is established, you hear voice guidance (BLUETOOTH connected) from the speaker and the activity of the  (BLUETOOTH) indicator changes from flashing to lit.



2 If the speaker is in any mode other than BLUETOOTH mode for audio source selection, touch (BLUETOOTH).

Note

- Even after a connection is established with a BLUETOOTH device, audio from the connected BLUETOOTH device does not come out from the speaker unless the speaker is in BLUETOOTH mode.

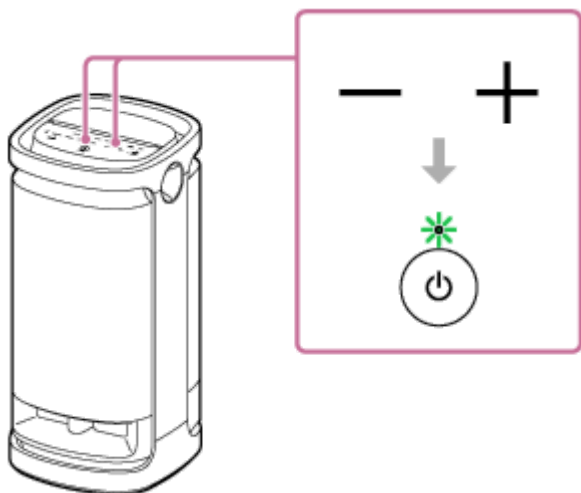
3 Start playback on the BLUETOOTH device.

4 Adjust the volume by touching $-/+$ (volume) on the speaker or operating the BLUETOOTH device.

When you touch $-/+$ (volume) on the speaker or adjust the volume on the BLUETOOTH device, the ⏻ (power) indicator flashes once or 3 times.

Depending on the BLUETOOTH device you are using, the ⏻ (power) indicator on the speaker may not flash even if you adjust the volume on the BLUETOOTH device.

Touch and hold $-/+$ (volume) on the speaker for rapid adjustments.



During playback, you can use $\blacktriangleright\parallel$ (play) on the speaker to perform the following operations.

Pause

Touch $\blacktriangleright\parallel$ (play) on the speaker during playback to pause. Touch it again to cancel pause.

Skip to the beginning of the next track

Touch $\blacktriangleright\parallel$ (play) on the speaker twice quickly during playback.


Skip to the beginning of the current or previous track^{*}

Touch $\blacktriangleright\parallel$ (play) on the speaker 3 times quickly during playback.

^{*} Operations vary depending on the BLUETOOTH device in use.



Hint

- As long as the speaker is connected to an AC outlet by the AC power cord (mains lead) (supplied), the speaker's built-in battery is capable of charging itself even while music playback from the speaker is in progress. Depending on the usage of the speaker, however, it may take a long time before charging completes. When you intend to use the speaker while charging the battery, turn down the speaker volume, or turn off the speaker and let the battery fully charge itself before using the speaker.
- The speaker supports content protection by the SCMS-T method. You can listen to music (or audio) from the smartphone or mobile phone, which supports the SCMS-T method, through the speaker.
- When you set the volume to the maximum or minimum level on the speaker, the  (power) indicator flashes 3 times.

Note

- For Apple iOS devices, the speaker is compatible with iOS 10.0 or later. A BLUETOOTH connection is not available on the devices with iOS 9.x or earlier.
- If the communication condition is poor, the BLUETOOTH device may react incorrectly to the operations on the speaker.
- When using in a place with a high temperature, the volume may decrease to protect the built-in battery.
- The maximum power output will be lower when the built-in battery is running low.
- Depending on the BLUETOOTH device, it may be necessary to adjust the volume or set the audio output setting on the connected device.
- Noise or sound interruption may occur depending on the BLUETOOTH device connected with the speaker, the communication environment or the usage environment.

Related Topic

- [Terminating the BLUETOOTH connection \(After use\)](#)
- [Charging the speaker](#)

Wireless Speaker
SRS-XV900


Selecting the quality for music playback via BLUETOOTH connection (Codec)


The “Priority on Sound Quality” and “Priority on Stable Connection” preferences are available on the speaker for the BLUETOOTH connection quality. The “Priority on Sound Quality” preference provides compatibility not only with SBC but also with AAC and LDAC for music playback of high sound quality, whereas the “Priority on Stable Connection” preference enables music playback via more stable BLUETOOTH connections. At the time of purchase, the “Priority on Sound Quality” preference is selected.

Supported Codecs

- Priority on Sound Quality (default setting): Optimal codec is automatically selected from AAC, LDAC, and SBC.
- Priority on Stable Connection: SBC is selected.





1 Turn on the speaker.

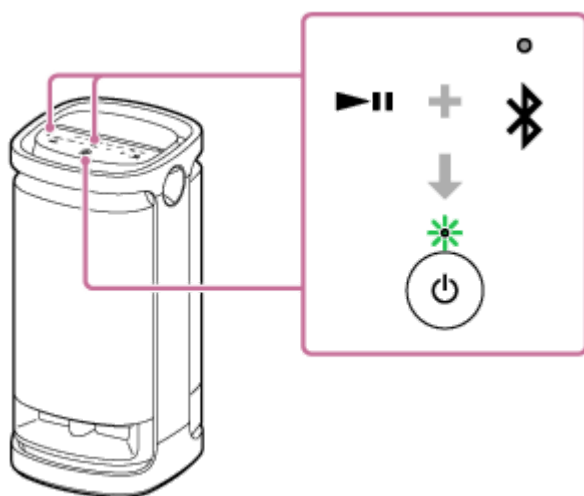
The  (BLUETOOTH) indicator flashes* in blue.

* If the BLUETOOTH device that has previously been connected with the speaker is located nearby, the speaker may be connected automatically with the device. In such a case, the  (BLUETOOTH) indicator on the speaker lights up in blue.

2 Change the BLUETOOTH connection quality.

When operating the speaker

1. Touch and hold  (play) and  (BLUETOOTH) on the speaker simultaneously for about 2 seconds.
When the setting is changed to the “Priority on Stable Connection” preference, the  (power) indicator flashes 3 times in green.
When the setting is changed to the “Priority on Sound Quality” preference, the  (power) indicator flashes twice in green.
When the speaker is connected with BLUETOOTH devices, all the connections are automatically disconnected and then reestablished and the new setup is applied.



When using “Sony | Music Center”

1. Pair the speaker with a BLUETOOTH device, such as a smartphone.
When a BLUETOOTH connection is established, you hear voice guidance (BLUETOOTH connected) from the speaker.
2. Tap [Music Center] on your smartphone, etc. to start up the application.



Music Center

3. Tap [SRS-XV900].
4. Tap [Settings] - [Sound] - [Bluetooth Connection Quality], and then select [Priority on Sound Quality] or [Priority on Stable Connection].
5. Disconnect the connection with the BLUETOOTH device and then establish it once again.
The preference turns effective.

Hint

- When using the Stereo Pair function or the Party Connect function, the codec automatically switches to SBC.

Note

- While the “Priority on Sound Quality” preference is selected, noise or sound interruption may occur depending on the setting of your BLUETOOTH device and ambient conditions. In such a case, change the BLUETOOTH connection quality to the “Priority on Stable Connection” preference.

Related Topic

- [Using the BLUETOOTH standby \(auto power on\) function](#)
- [What you can do with “Sony | Music Center”](#)

Wireless Speaker
SRS-XV900

Terminating the BLUETOOTH connection (After use)

When you finish playing music with the BLUETOOTH device, perform any of the following operations to terminate the BLUETOOTH connection.

When the BLUETOOTH connection is disconnected, you hear voice guidance (BLUETOOTH disconnected) from the speaker.

- Turn off the BLUETOOTH function on the BLUETOOTH device.
For details, refer to the operating instructions supplied with the device.
- Turn off the BLUETOOTH device.
- Turn off the speaker.

Hint

- When using the Stereo Pair function, if you turn off one speaker, the other speaker is automatically turned off. The BLUETOOTH connection between them is disconnected.
- When you finish playing music, the BLUETOOTH connection may terminate automatically depending on the BLUETOOTH device.

Related Topic

- [Turning the power off](#)
- [What you can do with “Sony | Music Center”](#)
- [Auto Standby \(power saving\) function](#)


Wireless Speaker
SRS-XV900

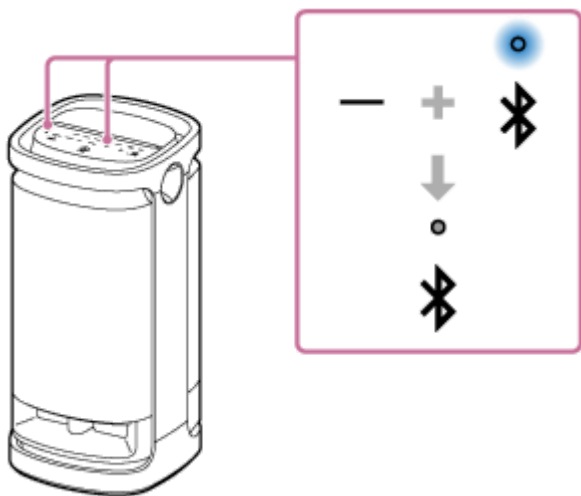
Turning on or off the BLUETOOTH function



You can connect to the speaker from a paired BLUETOOTH device when the speaker's BLUETOOTH function is set to on.

At the time of purchase, this setting is set to on.

1 Touch and hold - (volume) and (BLUETOOTH) on the speaker for 5 seconds.

The  (BLUETOOTH) indicator turns off and the BLUETOOTH function is set to off.



When you touch and hold - (volume) and  (BLUETOOTH) on the speaker for 5 seconds once again, the  (BLUETOOTH) indicator turns on and the BLUETOOTH function is set to on.

Hint

- With the device previously connected via a BLUETOOTH connection, the speaker is reconnected when its BLUETOOTH function turns on as long as the BLUETOOTH function of the device remains active.

Note

- You cannot perform the following operations when BLUETOOTH function is set to off:
 - Pair and/or connect with BLUETOOTH device.
 - Use “Sony | Music Center.”

Wireless Speaker
SRS-XV900

Listening to music of a portable audio device, etc.

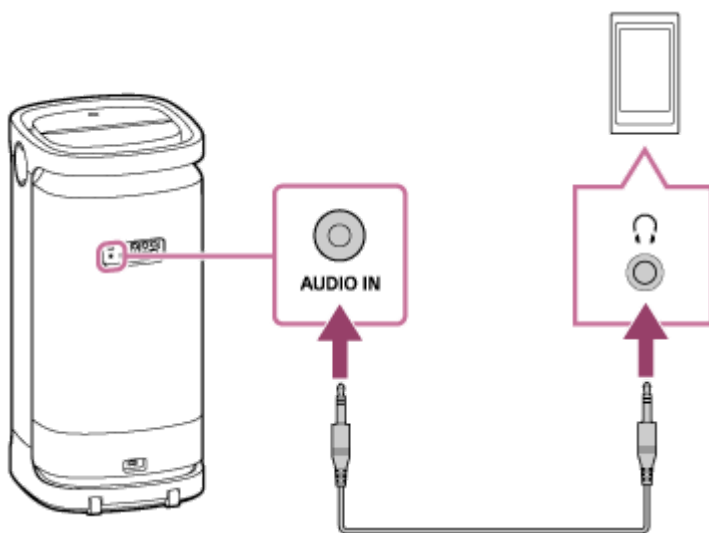
You can use the speaker by connecting a portable audio device, etc., to the speaker using an audio cable (commercially available).

Note

- Before establishing a connection between the speaker and a portable audio device, turn down the volume of the speaker and the device to avoid any sudden loud sound output from the speaker.

1 Connect a device to the AUDIO IN jack with an audio cable (commercially available).

For connection, use an audio cable with a stereo mini plug (no resistance)* at both ends.



* If you use an audio cable (with stereo mini plugs) with significant resistance, the sound may be lower. Therefore, make sure you use a cable (with stereo mini plugs) without resistance.

2 Turn on the speaker.


The  (power) indicator lights up in green.




3 Touch **AUDIO IN** on the speaker.

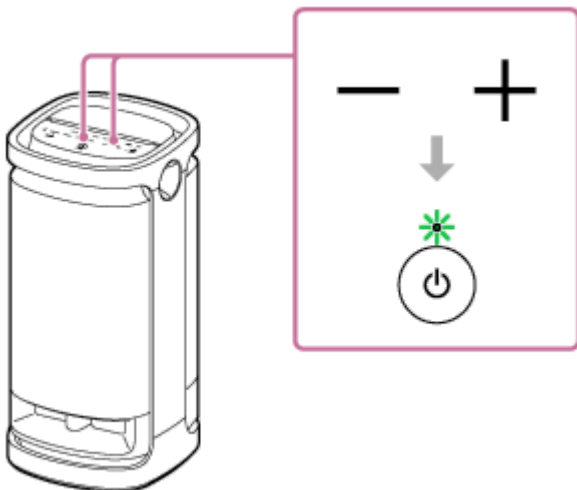
4 Turn on and start playback on the connected device.

5 Adjust the volume to a moderate level on the connected device.

If the volume is adjusted by operations on the connected portable audio device, the  (power) indicator on the speaker will not flash.

6 Touch **-/+ (volume)** on the speaker to adjust the volume.

When you touch **-/+ (volume)** on the speaker to adjust the volume, the  (power) indicator flashes once or 3 times.



Hint

- When you cannot hear the sound, raise the volume on the connected device.

Note

- While a portable audio device is connected to the AUDIO IN jack and music playback is in progress, operations on the speaker, for example, to pause, to skip to the beginning of the next track, and to skip to the beginning of the current track are disabled.

Related Topic

- [Auto Standby \(power saving\) function](#)

5-042-061-11(1) Copyright 2022 Sony Corporation

Wireless Speaker
SRS-XV900

Enjoying switching the sound effects

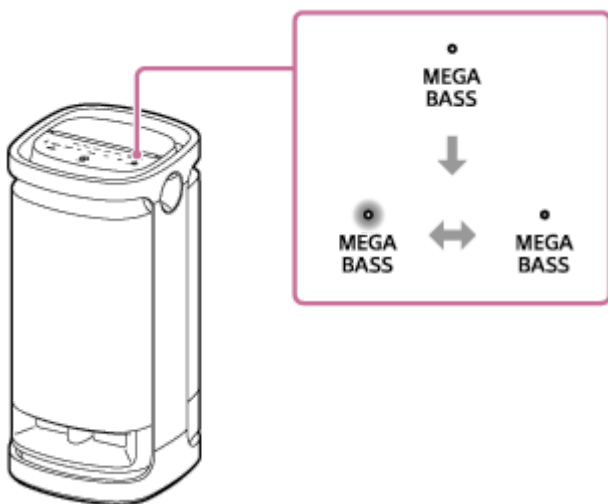
You can enjoy switching the sound effects on the speaker.

Enjoying more dynamic sound (MEGA BASS effect)

You can take either of the following procedures for setup.

At the time of purchase, the MEGA BASS sound effect is activated.

- On “Sony | Music Center,” tap [SRS-XV900] - [Settings] - [Sound] - [Sound Effect] - [MEGA BASS].
- Touch MEGA BASS on the speaker.
Each time you touch MEGA BASS on the speaker, the MEGA BASS sound effect is activated or deactivated.



Enjoying the feeling of being at a live performance (LIVE SOUND effect)

On “Sony | Music Center,” tap [SRS-XV900] - [Settings] - [Sound] - [Sound Effect] - [LIVE SOUND].



Setting the equalizer setting to your preference (CUSTOM)

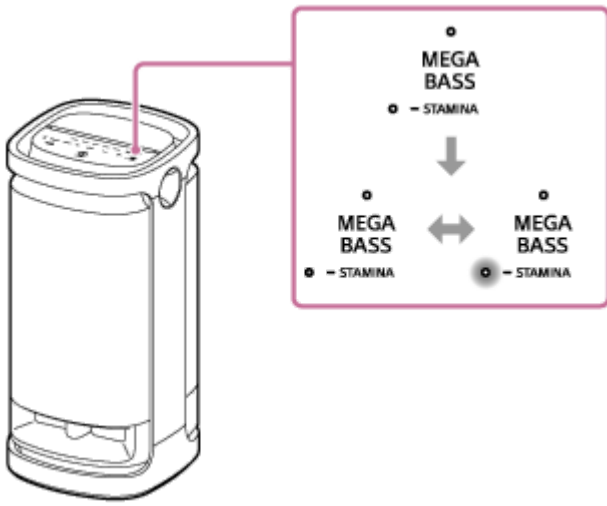
1. On “Sony | Music Center,” tap [SRS-XV900] - [Settings] - [Sound].
2. Do the following.
 - Tap [Sound Effect] - [CUSTOM].
 - Tap [Custom EQ], and then adjust the equalizer setting to suit your preference.

To use the speaker with less power consumption of the rechargeable battery (STAMINA)

You can take either of the following procedures for setup.

At the time of purchase, the STAMINA power option is deactivated.

- Touch and hold MEGA BASS/  STAMINA on the speaker for about 2 seconds.
The STAMINA indicator lights up in white to indicate that the STAMINA power option is activated.
To deactivate the STAMINA power option, touch and hold MEGA BASS/  STAMINA on the speaker once again for about 2 seconds.



- On “Sony | Music Center,” tap [SRS-XV900] - [Settings] - [Power Option], and then select [STAMINA].

While the STAMINA power option is activated, the lighting function and the sound effects, including MEGA BASS, are deactivated.

Wireless Speaker
SRS-XV900

Listening to music wirelessly with 2 speakers (Stereo Pair function)

To use the Stereo Pair function, 2 SRS-XV900 speakers are required. By connecting 2 speakers via BLUETOOTH connection, you can enjoy more powerful sound.

2 speakers connected via BLUETOOTH connections play sounds in stereo, where 1 speaker plays the sound on the right channel (right side) and the other plays the sound on the left channel (left side).

Before operating the speaker, make sure of the following:

- Update the pre-installed software to the latest version on each and every speaker to connect for the function. (For details about the update procedure, see [Updating the pre-installed software.](#))
- Make sure that the 2 speakers to connect for the function are located within 1 m (3.2 ft) from each other.
- Stop music playback if it is in progress.

You can establish or disconnect a connection for the Stereo Pair function with “Sony | Music Center.”

For details about “Sony | Music Center,” refer to the following URL:

<https://www.sony.net/smcqa/>

Note

- While the speaker is in OPTICAL IN, AUDIO IN, or USB mode, you can set it up for the Stereo Pair function with “Sony | Music Center” as well. Upon completion of the setup, however, the speaker is automatically placed into BLUETOOTH mode.
- Deactivating the Stereo Pair function gives no effect on the established BLUETOOTH connection and the speaker remains in BLUETOOTH mode. To place the speaker into OPTICAL IN, AUDIO IN, or USB mode, a respective touch operation on the speaker is required.
- To avoid any sudden loud sound output from the speaker, turn down the volume of the speaker and a BLUETOOTH device or stop the playback on the BLUETOOTH device before establishing a connection with the BLUETOOTH device.

Hint

- Use of the Stereo Pair function automatically switches the codec to SBC.
- Turning off the speakers does not turn off the Stereo Pair function. When one of the speakers is turned back on, it attempts to establish a connection for the Stereo Pair function. To use the Stereo Pair function, turn on the other speaker within 1 minute. When the BLUETOOTH standby function remains active* on both of the speakers, however, turning on either of the speakers automatically turns on the other and establish a connection for the Stereo Pair function between the speakers.

* The BLUETOOTH standby function is activated only while the speaker is connected to an AC outlet by the supplied AC power cord (mains lead).

Related Topic

- [Using the BLUETOOTH standby \(auto power on\) function](#)
- [Installing “Sony | Music Center”](#)
- [Updating the pre-installed software](#)

Wireless Speaker
SRS-XV900

Enjoying wireless playback using multiple speakers (Party Connect function)

You can connect multiple speakers (up to 100 speakers) compatible with the Party Connect function via BLUETOOTH connections and enjoy music playback.

Devices compatible with the Wireless Party Chain function are not applicable for connection.

Devices* compatible with the Party Connect function:

LSPX-S3, SRS-XP700, SRS-XP500, SRS-XG500, SRS-XG300, SRS-XB43, SRS-XB33, SRS-XB23, SRS-XE300, SRS-XE200, SRS-XV900

* Depending on your country or region, some of the compatible devices are not available for purchase.

Before operating the speaker, make sure of the following:

- Update the pre-installed software to the latest version on each and every speaker to connect for the function. (For details about the update procedure, see [Updating the pre-installed software.](#))
- Make sure that all of the speakers to connect for the function are located within 1 m (3.2 ft).
- Stop music playback if it is in progress.

1 Use “Sony | Music Center” to set up the speaker for the Party Connect function.

For details about “Sony | Music Center,” refer to the following URL:
<https://www.sony.net/smcqa/>

2 Start playback on the BLUETOOTH device, and adjust the volume to moderate level.

The same music is played from all speakers.

When adjusting the volume on the BLUETOOTH device or the speaker connected with the device (the speaker set up as the first one), the volumes of all speakers are automatically adjusted. For other speakers (the second or later speaker set), you can also adjust the volume on each other.

To change the connected BLUETOOTH device or speaker or to terminate the Party Connect function

Stop music playback in advance.

Hint

- The lighting mode of the speaker varies depending on the type of the speaker that is set up as the first speaker.
- When using the Party Connect function, the codec automatically switches to SBC.

Note

- While the speaker is in OPTICAL IN, AUDIO IN, or USB mode, you can set it up for the Party Connect function with “Sony | Music Center” as well. Upon completion of the setup, however, the speaker is automatically placed into BLUETOOTH mode.
- Deactivating the Party Connect function gives no effect on the established BLUETOOTH connection and the speaker remains in BLUETOOTH mode. To place the speaker into OPTICAL IN, AUDIO IN, or USB mode, a respective touch operation on the speaker is required.

- When watching movies using the Party Connect function, there may be a gap between video and audio.

Related Topic

- [Installing “Sony | Music Center”](#)
- [Updating the pre-installed software](#)

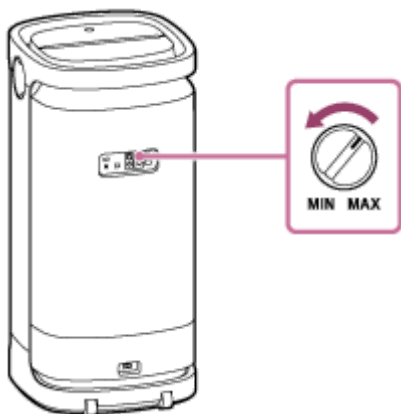
5-042-061-11(1) Copyright 2022 Sony Corporation

Wireless Speaker
SRS-XV900

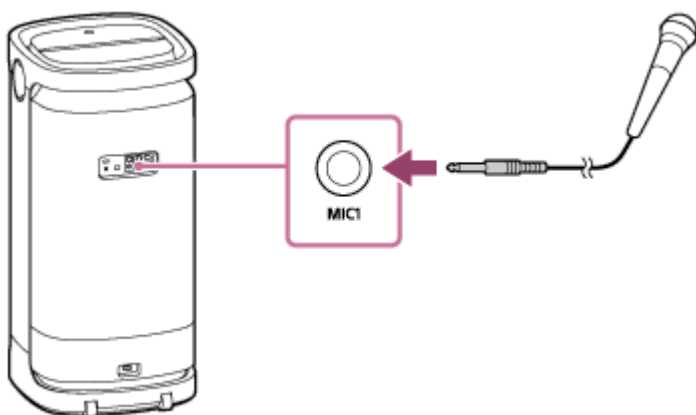
Using an external microphone

You can output your voice from the speaker by connecting a dynamic microphone with a normal plug (Φ 6.3 mm) (commercially available).

- 1 Turn the MIC level knob or the MIC and GUITAR level knob to MIN to reduce the microphone volume level.



- 2 Connect an external microphone to the MIC1 jack or MIC2/GUITAR jack on the rear side of the speaker.



- 3 Adjust the volume using the MIC level knob or the MIC and GUITAR level knob.

- 4 Speak or sing into the connected microphone.

Note

- When using the Party Connect or Stereo Pair function, sound from the microphone is only output from the speaker to which the microphone is connected.

Related Topic

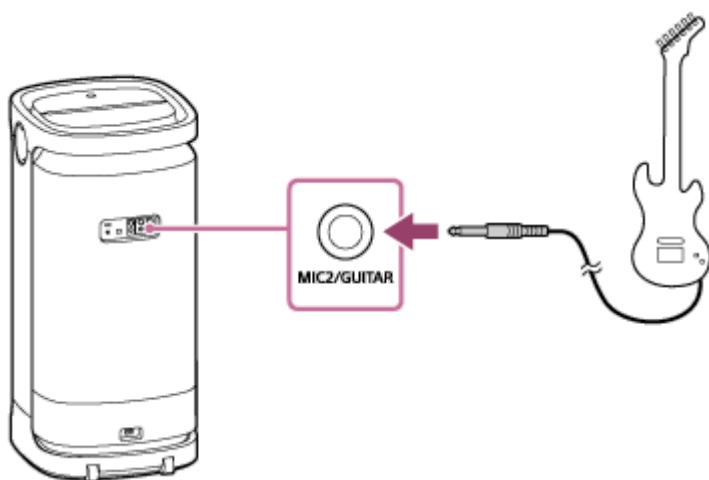
- [Neither the Karaoke function nor the DJ Control function are available for use while the TV Sound Booster function is activated](#)

Wireless Speaker
SRS-XV900

Enjoying sound from a guitar

You can listen to sound from your guitar by connecting it to the MIC2/GUITAR jack (Φ 6.3 mm) on the speaker. By connecting an external microphone to the MIC1 jack (Φ 6.3 mm) on the speaker, you can play the guitar and sing along as well.

- 1 Turn the MIC and GUITAR level knob toward MIN to turn down the guitar volume.
- 2 Connect the guitar to the MIC2/GUITAR jack on the rear side of the speaker with an instrument cable for guitar wiring (commercially available).



- 3 Press the GUITAR button on the rear side of the speaker.
The GUITAR indicator lights in white.
- 4 Adjust the guitar volume while playing the guitar.
The guitar sound is output from the speaker.

To bring the speaker out of guitar mode

Press the GUITAR button on the rear side of the speaker once again.

Note

- Before disconnecting the guitar from the speaker, turn the MIC and GUITAR level knob toward "MIN" to turn down the guitar volume.
- While a microphone or a guitar is connected to the speaker, the Auto Standby function is turned off.

Related Topic

- [Neither the Karaoke function nor the DJ Control function are available for use while the TV Sound Booster function is activated](#)

Wireless Speaker
SRS-XV900

What you can do with “Sony | Music Center”

“Sony | Music Center” is an app for controlling Sony audio devices which are compatible with “Sony | Music Center” using your smartphone, etc.

For details about “Sony | Music Center,” refer to the following URL:

<https://www.sony.net/smcqa/>

Operations that can be performed on a speaker with “Sony | Music Center”

- Setting up the Party Connect function
- Setting up the Stereo Pair function, swapping the right (right side) and left (left side) audio channels
- Sound quality setting and equalizer adjustment
- Viewing the remaining battery power of the speaker's built-in rechargeable battery, the remaining battery charging time, and the remaining time available for playback
- Power Option settings (STAMINA, Battery Care mode, the Auto Standby function, the Bluetooth Standby function, Battery Level (Voice), and Power On/Off Sound)
- Lighting (Illumination) setting (switching the Lighting Mode)
- Switching of the audio source among the device connected via BLUETOOTH connection, the device connected to the OPTICAL IN connector, the device connected to the AUDIO IN jack, and the device connected to the USB port for playback
- Activating/deactivating the TV Sound Booster function
- Adjusting synchronization with the TV audio
- Switching Bluetooth Connection Quality (Priority on Sound Quality/Priority on Stable Connection)
- Multipoint connection (concurrent connection with 2 BLUETOOTH devices) management
- Viewing the update or version of the speaker's software
- Operations including establishment and disconnection of connections with BLUETOOTH devices

etc.

Note

- What you can control with “Sony | Music Center” varies depending on the connected device. The specifications and design of the app may change without notice.
- For Apple iOS devices, the speaker is compatible with iOS 10.0 or later. A BLUETOOTH connection is not available on the devices with iOS 9.x or earlier.
- Be sure to use the latest version of “Sony | Music Center.” If you cannot connect the speaker and a BLUETOOTH device via a BLUETOOTH connection, or if there is a problem such as no sound being emitted, uninstall “Sony | Music Center” and try to connect via the BLUETOOTH connection again. For details about “Sony | Music Center,” refer to Google Play (Play Store) or the App Store.
- Be aware that “Sony | Music Center” and “Music Center for PC” are different apps.

Related Topic

- [Installing “Sony | Music Center”](#)
- [Charging the speaker](#)
- [Turning on/off the speaker’s light \(Lighting function\)](#)
- [Connecting the speaker concurrently with 2 BLUETOOTH devices \(multipoint connection\)](#)
- [Listening to TV audio \(with use of the TV Sound Booster function\)](#)
- [Listening to TV audio \(without use of the TV Sound Booster function\)](#)
- [Selecting the quality for music playback via BLUETOOTH connection \(Codec\)](#)
- [Listening to music wirelessly with 2 speakers \(Stereo Pair function\)](#)
- [Enjoying wireless playback using multiple speakers \(Party Connect function\)](#)
- [Updating the pre-installed software](#)

Wireless Speaker
SRS-XV900

Installing “Sony | Music Center”

Install “Sony | Music Center” on your smartphone, etc. from Google Play (Play Store) or the App Store. For Apple iOS devices, “Sony | Music Center” can be installed on the devices with iOS 11.0 or later. Installation is not available on the devices with iOS 10.x or earlier.

- 1 Download “Sony | Music Center” from Google Play (Play Store) or the App Store and install it.



Sony Music Center 

- 2 When the installation is complete, start “Sony | Music Center.”

Note

- Be aware that “Sony | Music Center” and “Music Center for PC” are different apps.
- Be sure to use the latest version of “Sony | Music Center.” If you cannot connect the speaker and a BLUETOOTH device via a BLUETOOTH connection, or if there is a problem such as no sound being emitted, uninstall “Sony | Music Center” and try to connect via the BLUETOOTH connection again. For details about “Sony | Music Center,” refer to Google Play (Play Store) or the App Store.

Related Topic

- [What you can do with “Sony | Music Center”](#)

Wireless Speaker
SRS-XV900

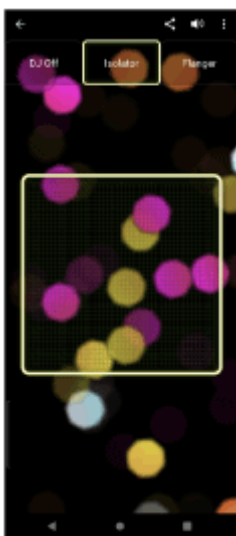
What you can do with “Fiestable”

“Fiestable” is an app for operating Sony audio devices compatible with “Fiestable” from smartphones, etc.

Available controls

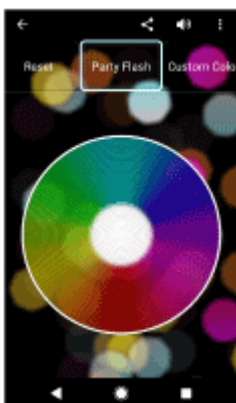
- DJ Control

You can include sound effects (Isolator, etc.) or sampling sounds (drum/cheering sounds, etc.) in the music being played.



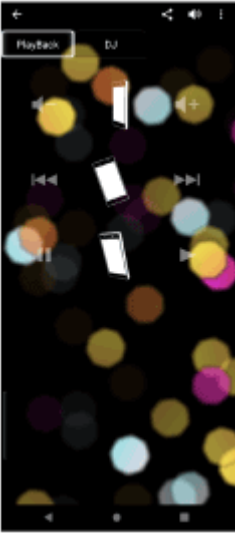
- Illumination

You can set the lighting function.



- Motion Control

You can perform sound operations by shaking the smartphone.



- Karaoke
You can enjoy various Karaoke features, such as Voice Changer, Echo, Key Control, etc.
- Voice Control
You can operate the speaker by speaking preset voice commands into smartphone/iPhone microphone.
- Party Light
You can synchronize the screen illumination of multiple smartphones/iPhone with the lighting of this speaker.
- Party Playlist
You and your guests can add favorite songs to a playlist from multiple BLUETOOTH devices.

Hint

- What you can control with “Fiestable” varies depending on the connected device. The specification and design of the app may change without notice.

Note

- For Apple iOS devices, the speaker is compatible with iOS 10.0 or later. A BLUETOOTH connection is not available on the devices with iOS 9.x or earlier.

Wireless Speaker
SRS-XV900

Installing “Fiestable”

Install “Fiestable” on your smartphone, etc. from Google Play (Play Store) or the App Store. For Apple iOS devices, “Fiestable” can be installed on the devices with iOS 11.0 or later. Installation is not available on the devices with iOS 10.x or earlier.

- 1 Download “Fiestable” from Google Play (Play Store) or the App Store and install it.



Fiestable 

- 2 When the installation is completed, start “Fiestable” from the “Sony | Music Center” screen.



Note

- Be sure to use the latest version of “Fiestable.”

Related Topic

- [What you can do with “Fiestable”](#)

Wireless Speaker
SRS-XV900

About the indicators

CHARGE indicator (orange)

Unlit	The speaker has completed charging.
Lit	The speaker is being charged.
Slow flashing	The built-in battery is running at 10% or less and needs to be charged.
Flashes 3 times and turns off	If the CHARGE indicator flashes 3 times and turns off when you turn on the speaker, the built-in battery is empty and needs to be charged.

Note

- While the speaker is turned on, it charges the built-in battery as long as the speaker is connected to an AC outlet by the supplied AC power cord (mains lead). Depending on the usage of the speaker, however, it may take a long time before charging completes. It is recommended that you turn off the speaker before battery charging.
- If the ambient temperature is extremely low or high, the speaker will stop charging the built-in battery for safety reasons. It may also stop charging if charging continues for a long period of time. If such an event occurs, bring the temperature up or down to an operating temperature between 5 °C and 35 °C (41 °F and 95 °F), disconnect and reconnect the AC power cord (mains lead), and then let the speaker charge the built-in battery once again.

⏻ (power) indicator

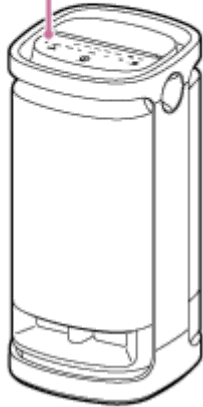
Unlit	The speaker is turned off.
Lit (green)	The speaker is turned on.
Lit (orange)	The speaker is turned off. The speaker is in BLUETOOTH standby mode.
Flashes (green or orange)	<ul style="list-style-type: none"> Each time you touch +/- (volume) on the speaker, the indicator flashes once in green. When you operate +/- (volume) on the speaker and the volume is set at the lowest (0) or highest (50 for music playback) level, the indicator flashes 3 times in green. When the color of the light is changed by one of the lighting color selectors on the speaker, the indicator flashes once in green. When the current color is selected by the lighting color selector on the speaker, the indicator flashes 3 times in green. When ► (play) and - (volume) on the speaker are touched and held simultaneously for about 5 seconds and the Auto Standby function is turned off, the indicator flashes 3 times in orange. When ► (play) and - (volume) on the speaker are touched and held simultaneously for about 5 seconds and the Auto Standby function is turned on, the indicator flashes twice in orange.

	<ul style="list-style-type: none"> ● When ► (play) and ✎ (BLUETOOTH) on the speaker are touched and held simultaneously for about 2 seconds and the “Priority on Stable Connection” preference is selected for the BLUETOOTH connection quality, the indicator flashes 3 times in green. ● When ► (play) and ✎ (BLUETOOTH) on the speaker are touched and held simultaneously for about 2 seconds and the “Priority on Sound Quality” preference is selected for the BLUETOOTH connection quality, the indicator flashes twice in green. ● As the software update progresses, the activity of the green ⏻ (power) indicator changes (from 5 flashes to 4 flashes, a single flash, and then unlit*). ● When the speaker is turned on for the first time after software update, the indicator flashes 3 times in green along with the blue flashing ✎ (BLUETOOTH) indicator to inform you that the update is complete.
Double flashing (orange)	An error is detected during battery charging. Stop charging immediately, wait for a while, and then charge the built-in battery all over again. For details, see Notes on charging .
Triple flashing (orange)	An abnormality, such as an invalid touch operation or disconnection of a BLUETOOTH connection, is detected (an electric circuit error). Follow the steps described in Restarting the speaker to restart the speaker.
Quadruple flashing (orange)	<ul style="list-style-type: none"> ● The software update was canceled by “Sony Music Center.” ● The software update failed.

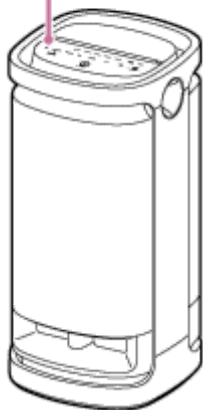
* Depending on the situation, you may not be able to see all flashing patterns.

✎ (BLUETOOTH) indicator (blue)

Unlit	BLUETOOTH function is not activated.
Lit	The speaker is connected to a BLUETOOTH device.
Flashes	<ul style="list-style-type: none"> ● The software update was canceled by “Sony Music Center.” ● The software update failed. ● When the speaker turns on for the first time after the software update, the indicator flashes 3 times along with the green flashing ⏻ (power) indicator to inform you that the update is complete.
Double flashing	The speaker is in pairing mode.



The speaker is waiting for a BLUETOOTH device to connect to.



Slow flashing

MEGA BASS indicator (white)

Unlit	The sound effect is set to other than MEGA BASS.
Lit	The sound effect is set to MEGA BASS.

STAMINA indicator (white)

Unlit	The sound effect is set to other than STAMINA.
Lit	The sound effect is set to STAMINA.

GUITAR indicator (white)

Unlit	The speaker is not in guitar mode.

Lit	The speaker is in guitar mode.
-----	--------------------------------

Related Topic

- [Parts and controls](#)
- [What you can do with “Sony | Music Center”](#)

5-042-061-11(1) Copyright 2022 Sony Corporation

Wireless Speaker
SRS-XV900

Updating the pre-installed software

When a new version of the software is released, you can update your speaker's pre-installed software by using the following methods.

By updating the software, new features will be added enabling you to experience more convenient and stable use.

1 Connect the speaker to an AC outlet with the supplied AC power cord (mains lead).

Software updates cannot be performed when using with the built-in battery.

2 Turn on the speaker.

The  (power) indicator lights up in green.



3 Tap [Music Center] on your smartphone, etc. to start up the application.

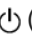


Music Center



4 Tap [SRS-XV900].

When a new version of the software is released, an update notice is displayed on the "Sony | Music Center" screen.

5 Follow the instructions on the screen to update.

As the software update progresses, the activity of the green  (power) indicator changes (from 5 flashes to 4 flashes, a single flash, and then unlit).

Depending on the situation, you may not be able to see all flashing patterns.

When the speaker turns on for the first time after the software update, the  (power) and  (BLUETOOTH) indicators flash 3 times to inform you that the update has completed.

6 Confirm the version of the speaker's software.

On "Sony | Music Center," tap [SRS-XV900] – [Settings] – [System].
"XXXXXXX" displayed under "SRS-XV900" indicates the software version.

Hint

- When the software update fails, turn off the speaker and then turn it back on. The speaker will recover from the error state.

Note

- When an attempt to update the software fails, charge the rechargeable built-in battery until it is charged 40% or more.

Related Topic

- [Charging the speaker](#)
- [About the indicators](#)

Wireless Speaker
SRS-XV900

Precautions

On safety

- Refer to the Reference Guide supplied with the speaker.

About the power cord

- If the speaker is not used for an extended period, unplug the AC power cord from the AC outlet. When unplugging the speaker, be sure to grasp the plug. Never pull on the cord itself.

On placement

- Do not insert foreign objects from the opening of the speaker unit.
- Do not splash water onto this product and the supplied accessories. Those are not waterproof.
- To eliminate the risk of malfunctions, avoid the following locations when placing or leaving this speaker.
 - A place subject to high temperatures, such as under direct sunlight or lighting equipment, near a heat source, or in a sauna
 - Inside a vehicle with the windows closed (especially in summertime)
 - A place subject to excessive dust
 - A place subject to strong vibration
- Place this speaker on a flat, level surface. When placed on a sloped surface, the speaker may fall over or fall off the surface due to its own vibration, resulting in injuries, malfunctions, or performance degradation.
- Depending on the conditions where this speaker is placed, it may fall over or fall off the surface. Do not leave any valuables near the speaker.
- This speaker is not anti-magnetic. Keep objects susceptible to magnetism (recorded tapes, watches, cash cards and credit cards with magnetic coding, etc.) away from the speaker. When you carry around the speaker, keep this in mind as well.

Other notes

- Do not use or leave the speaker in an extremely cold or hot environment (temperature outside the range of 5 °C – 35 °C (41 °F – 95 °F)). If the speaker is used or left in outside the above range, the speaker may automatically stop to protect internal circuitry.
- If you use this speaker for a long time, the temperature of this speaker may rise, but it is not a malfunction.
- At high temperature, the charging may stop or the volume may reduce to protect the battery.
- When the speaker's light seems bright or glaring, turn up the room lights or turn off the lighting function.
- Put your fingertip directly onto the touch sensor for operations.

- Do not operate the touch sensor with a wet hand to avoid a malfunction.
- Even if you do not intend to use the speaker for a long time, charge the battery to its full capacity once every 6 months to maintain its performance.

5-042-061-11(1) Copyright 2022 Sony Corporation

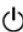
Wireless Speaker
SRS-XV900

Notes on charging

Life span of the built-in lithium ion battery

- Even if you do not intend to use the speaker for a long time, charge the built-in battery sufficiently once every 6 months to maintain its performance.
- If the speaker is not used for a long time, it may take longer to charge the built-in battery.
- The rechargeable built-in battery has a life span. As time passes and the number of times that the built-in battery is used increases, the capacity of the rechargeable built-in battery slowly decreases. When the amount of time that the built-in battery can be used seems significantly shorter, despite having been fully charged, contact your nearest Sony dealer.
- When the amount of time that the built-in battery can be used seems significantly shorter, it could mean that the rechargeable built-in battery has expired.
- The life span of the rechargeable built-in battery differs depending on the usage, environment, and storage method.

Caution

When the speaker detects an abnormality such as the following while charging the built-in battery, the  (power) indicator starts double flashing in orange.

- Ambient temperature exceeds the range of 5 °C – 35 °C (41 °F – 95 °F).
- When charging to the built-in battery continues for a long time.



When an abnormality of the built-in battery has been detected, stop charging immediately, wait for a while, and then charge the built-in battery again. If the problem persists, contact your nearest Sony dealer.

Note

- Charging time varies depending on built-in battery usage conditions.

- Charge the speaker in an ambient temperature between 5 °C and 35 °C (41 °F and 95 °F). Be aware that the room temperature may fall to 5 °C (41 °F) or lower depending on the season, for example, especially in wintertime.
- The speaker becomes warm during charging. This is not a malfunction.
- Avoid exposure to rapid temperature change, direct sunlight, mist, sand, dust, or mechanical shock. Also, never leave the speaker in a car parked in the sun.
- As long as the speaker is connected to an AC outlet by the supplied AC power cord (mains lead), the speaker's built-in battery is capable of charging itself even while the speaker is turned on. However, it may take a long time before charging completes depending on the usage of the speaker. It is recommended that you turn off the speaker before battery charging.
- You can charge the speaker's built-in battery by connecting the speaker to a computer that comes equipped with a USB charging port as well. However, not all the computers are tested and found compatible with this procedure and the procedure is not applicable to home-built computers.
- In an extremely cold or hot environment, charging stops for safety. If charging takes a long time, it also makes charging of the speaker stop. To resolve these issues, disconnect the AC power cord (mains lead) from the speaker and connect it again within an operating temperature between 5 °C and 35 °C (41 °F and 95 °F).
- At high temperature, the charging may stop or the volume may reduce to protect the battery.
- Charging from a USB hub is only guaranteed when you use a self-powered USB hub that carries an authorized logo.
- While the speaker is connected with a computer that is not connected to an AC outlet, the speaker consumes the battery power of the computer. Do not leave the computer with the speaker connected for a long period of time to prevent the computer's battery from running out of power.

Related Topic

- [Charging the speaker](#)

Wireless Speaker
SRS-XV900

How to care for the speaker

You can use the speaker more comfortably and for a longer period of time by following the maintenance procedure below.

- To clean the speaker, use a soft cloth slightly moistened with neutral detergent. Do not use polishing agent, scrubbing brush, thinner, benzine, alcohol, etc.

Note

- In cold or hot locations, condensation can occur which may cause the speaker to malfunction. If condensation occurs, wipe off with a dry, soft cloth.

Wireless Speaker
SRS-XV900

About the BLUETOOTH wireless technology

The BLUETOOTH wireless technology operates within a range of about 30 m (about 98 ft).

Supported version and profiles of the BLUETOOTH standard

A profile is a set of functions standardized for every characteristic of BLUETOOTH devices. The speaker supports the following version and profiles of the BLUETOOTH standard.

Supported BLUETOOTH version: BLUETOOTH standard, version 5.2

Supported BLUETOOTH profiles:

- A2DP (Advanced Audio Distribution Profile): Enables transmission and reception of high-quality music contents.
- AVRCP (Audio Video Remote Control Profile): Enables volume adjustment and operations to play/pause music and skip to the beginning of the next/current track.

Maximum communication range

Use the BLUETOOTH wireless technology between the speaker and a device that are located within 30 m (about 98 ft) from each other.

Maximum communication range may shorten under the following conditions.

- There is an obstacle such as a person, metal, or wall between the speaker and BLUETOOTH device.
- A wireless LAN device is in use near the speaker.
- A microwave oven is in use near the speaker.
- A device that generates electromagnetic radiation is in use near the speaker.

Interference from other devices

Because BLUETOOTH devices and wireless LAN (IEEE802.11b/g) use the same frequency (2.4 GHz), microwave interference may occur and result in communication speed deterioration, noise, or invalid connection if the speaker is used near a wireless LAN device.

Interference to other devices

Microwaves emitted from a BLUETOOTH device may affect the operation of electronic medical devices. Turn off the speaker and other BLUETOOTH devices in the following locations, as it may cause an accident.

- Where inflammable gas is present, in a hospital, train, airplane, or a gas station
- Near automatic doors or a fire alarm

Note

- To be able to use the BLUETOOTH function, the BLUETOOTH device to be connected requires the same profile as the speaker's. Note also that even if the same profile exists, devices may vary in function depending on their specifications.
- Due to the characteristic of BLUETOOTH wireless technology, the sound played on the speaker is slightly delayed from the sound played on the BLUETOOTH device while listening to music.
- The speaker supports security capabilities that comply with the BLUETOOTH standard to provide a secure connection when the BLUETOOTH wireless technology is used, but security may not be enough depending on the setting. Be careful when communicating using BLUETOOTH wireless technology.
- We do not take any responsibility for the leakage of information during BLUETOOTH communication.

- A device featuring the BLUETOOTH function is required to conform to the BLUETOOTH standard specified by Bluetooth SIG, Inc. and be authenticated. Even if the connected device conforms to the above mentioned BLUETOOTH standard, some devices may not be connected or work correctly, depending on the features or specifications of the device.
- Noise or sound interruption may occur depending on the BLUETOOTH device connected with the speaker, the communication environment or the usage environment.
- A device with a built-in radio or tuner cannot be connected to the speaker via BLUETOOTH since noise may occur in broadcasts.
- Locate the speaker farther away from a TV, radio or tuner, etc. since noise may occur in broadcasts.

Wireless Speaker
SRS-XV900

Licenses

- This product contains software that Sony uses under a licensing agreement with the owner of its copyright. We are obligated to announce the contents of the agreement to customers under requirement by the owner of copyright for the software. Please access the following URL and read the contents of the license.
<https://rd1.sony.net/help/speaker/sl/22v/>
- The software included in this product contains copyrighted software that is licensed under the GPL/LGPL and other licenses which may require access to source code. You may find a copy of the relevant source code as required under the GPL/LGPL (and other licenses) at the following URL.
You may obtain the source code as required by the GPL/LGPL on a physical medium from us for a period of three years after our last shipment of this product by applying through the form at the following URL.
This offer is valid to anyone in receipt of this information.
<https://oss.sony.net/Products/Linux/>
Please note that Sony cannot answer or respond to any inquiries regarding the content of this source code.
- Use of the Made for Apple badge means that an accessory has been designed to connect specifically to the Apple product(s) identified in the badge, and has been certified by the developer to meet Apple performance standards. Apple is not responsible for the operation of this device or its compliance with safety and regulatory standards. Please note that the use of this accessory with an Apple product may affect wireless performance.
- This product is protected by certain intellectual property rights of Microsoft Corporation. Use or distribution of such technology outside of this product is prohibited without a license from Microsoft or an authorized Microsoft subsidiary.

Disclaimer regarding services offered by third parties

- Services offered by third parties may be changed, suspended, or terminated without prior notice. Sony does not bear any responsibility in these sorts of situations.

Wireless Speaker
SRS-XV900

Trademarks

- Google™, Android and Google Play are trademarks of Google LLC.
- The LDAC™ name is a trademark of Sony Group Corporation or its affiliates.
- The BLUETOOTH® word mark and logos are registered trademarks owned by Bluetooth SIG, Inc. and any use of such marks by Sony Group Corporation and its subsidiaries is under license.
- Apple, the Apple logo, iPhone, iPod, iPod touch, Mac, and macOS are trademarks of Apple Inc., registered in the U.S. and other countries.
App Store is a service mark of Apple Inc., registered in the U.S. and other countries.
- IOS is a trademark or registered trademark of Cisco in the U.S. and other countries and is used under license.
- MPEG Layer-3 audio coding technology and patents licensed from Fraunhofer IIS and Thomson.
- Windows Media is either a registered trademark or trademark of Microsoft Corporation in the United States and/or other countries.
- Microsoft, Windows, and Windows Media are registered trademarks or trademarks of Microsoft Corporation in the United States and/or other countries.

All other trademarks and registered trademarks are trademarks or registered trademarks of their respective holders. In this manual, ™ and ® marks are not specified.

Wireless Speaker
SRS-XV900

What can I do to solve a problem?

If the speaker does not function as expected, try the following steps to resolve the issue.

- Find the symptoms of the issue in this Help Guide and try any corrective actions listed.
- Charge the speaker.
You may be able to resolve some issues by charging the built-in battery.
- Restart the speaker.
- Initialize the speaker.
This operation restores the settings such as volume, etc. to the default settings, and deletes all pairing information.
- Look up information on the issue on the customer support website.
- Access the following support home pages to get support information about your speaker:
 - For customers in Americas:
<https://www.sony.com/am/support>
 - For customers in Europe:
<https://www.sony.eu/support>
 - For customers in China:
<https://service.sony.com.cn>
 - For customers in other countries/regions:
<https://www.sony-asia.com/support>

If the operations above do not work, consult your nearest Sony dealer.

Related Topic

- [Restarting the speaker](#)
- [Initializing the speaker](#)

Wireless Speaker
SRS-XV900

Unable to charge the speaker

- Make sure that the AC power cord (mains lead) is connected securely to the speaker. Then, make sure that the AC power cord (mains lead) is connected securely to an AC outlet.
 - Charge the speaker in an ambient temperature between 5 °C and 35 °C (41 °F and 95 °F). Be aware that the room temperature may fall to 5 °C (41 °F) or lower depending on the season, for example, especially in wintertime.
-

Related Topic

- [Charging the speaker](#)
- [About the indicators](#)
- [Notes on charging](#)

Wireless Speaker
SRS-XV900

Unable to turn on the speaker or the speaker suddenly turns off


- The rechargeable built-in battery may be empty or running low. Connect the speaker to an AC outlet with the supplied AC power cord (mains lead) for battery charging.
 - The Auto Standby function may have been activated. Deactivate the Auto Standby function.
-

Related Topic

- [Charging the speaker](#)
- [Auto Standby \(power saving\) function](#)

Wireless Speaker
SRS-XV900

No sound/Sound from only one speaker/Distorted sound/Humming or noise in the speaker output

- Check that both the speaker and the connected device are turned on.
- Turn up the volume of the speaker and the connected device.
- Depending on the connected BLUETOOTH device, volume adjustment on the BLUETOOTH device may not change the volume level of the speaker (i.e. the  (power) indicator does not flash).
When the volume of the speaker sounds low, adjust the volume level of the BLUETOOTH device to an appropriate one, and then adjust the volume level of the speaker with +/- (volume) on the speaker.
- Check that the connected device is playing.
- Select BLUETOOTH, OPTICAL IN, AUDIO IN, or USB mode in accordance with the desired audio source for playback.
- Make sure the audio cable is firmly connected to the AUDIO IN jack during playback in AUDIO IN mode.
- If the speaker is in OPTICAL IN mode and playback is in progress, make sure that the optical digital audio cable is firmly plugged in the OPTICAL IN connector.
- If you are connecting a computer to the speaker, make sure the audio output setting of the computer is set for a BLUETOOTH device.
- Check that the speaker has established BLUETOOTH connection with the BLUETOOTH device.
- Pair the speaker and the BLUETOOTH device again.
- Before connecting multiple speakers via BLUETOOTH connection for the Stereo Pair function or the Party Connect function, update the pre-installed software to the latest version on each and every speaker.
- If the device that is connected to the AUDIO IN jack is monaural, sound may only be output from the left speaker component (left channel).
- If the connected device has an equalizer function, set it to off.
- Keep the speaker away from a microwave oven, wireless LAN, etc.
- Bring the BLUETOOTH device closer to the speaker. If there is any obstacle between the speaker and the BLUETOOTH device, move it out of the way.
- If the CHARGE indicator flashes slowly, turn off the speaker and charge the built-in battery sufficiently.
- A device with a built-in radio or tuner cannot be connected to the speaker via BLUETOOTH since noise may occur in broadcasts.
- Locate the speaker farther away from a TV, radio or tuner, etc. since noise may occur in broadcasts.
- When using the Stereo Pair function or Party Connect function, if any other BLUETOOTH device(s) such as a BLUETOOTH mouse or BLUETOOTH keyboard is connected to the BLUETOOTH device, terminate the connection between them.

- There are some BLUETOOTH devices that can have the BLUETOOTH connection quality changed. If your device is compatible with this function, select “Priority on Stable Connection (SBC)” for the BLUETOOTH connection quality. For details, refer to the operating instructions supplied with the device.
- Select “Priority on Stable Connection (SBC)” for the BLUETOOTH connection quality of the speaker.
- Install the latest version of “Sony | Music Center” on the connected device. If you cannot use the latest version of “Sony | Music Center” or you cannot connect the speaker and a BLUETOOTH device via BLUETOOTH connection, uninstall “Sony | Music Center” and install it again.
- Depending on the app being used on the connected BLUETOOTH device, you may hear no sound. In such a case, close the app and start it once again. This may help for solving the issue.

Related Topic

- [Charging the speaker](#)
- [Pairing and connecting with BLUETOOTH® devices](#)
- [Listening to music of a device via BLUETOOTH connection](#)
- [Selecting the quality for music playback via BLUETOOTH connection \(Codec\)](#)
- [About the indicators](#)

Wireless Speaker
SRS-XV900

The sound volume is low

- Turn up the volume of the speaker and the connected device.
- Check that the connected device is playing.

5-042-061-11(1) Copyright 2022 Sony Corporation

Wireless Speaker
SRS-XV900

Sound becomes low while in use

- The sound may become low in the following cases. This is not a malfunction.
 - While the speaker is running on power from the rechargeable built-in battery, the sound may become low in the event that the rechargeable built-in battery is running out of power and the CHARGE indicator flashes slowly. This, however, does not indicate a malfunction.
 - When the ambient temperature of the speaker is high.
- If the sound becomes low while in use, follow the procedure below.
 1. Turn off the speaker.
 2. Charge the built-in battery sufficiently.

Related Topic

- [Charging the speaker](#)

Wireless Speaker
SRS-XV900

No sound comes out from the speaker

- Make sure that the optical out jack on the TV and the OPTICAL IN connector on the speaker are properly connected.
- Make sure that PCM is specified as the digital audio output method on the TV. For TV operations, refer to the instruction manual supplied with your TV.
- Check the TV for sound volume. While the TV Sound Booster function is activated, the combined audio from the TV and the speaker is used for content playback. Adjust the sound volume independently on the TV and the speaker.
- The TV Sound Booster function enables content playback with the combined audio from the TV and the speaker. If no sound comes out from the TV, refer to the instruction manual supplied with your TV for the audio output settings.
- Check the speaker for sound volume. While the TV Sound Booster function is activated, the speaker outputs only the bass and high-pitched sounds for content playback. Use “Sony | Music Center” to adjust the sound volume of the speaker in accordance with the TV sound volume.
- While the TV Sound Booster function is activated, the 4 speaker components at the front top (2 tweeter speakers and 2 midrange speakers) are disabled to optimize the audio output for the combined use with a connected TV.

Wireless Speaker
SRS-XV900

Video and audio are not synchronized; or audio sounds duplicated

- Make sure that your TV is updated with the latest software.
- Adjust synchronization between the TV audio and the speaker audio with “Sony | Music Center.”
 1. Tap [Music Center] on your smartphone, etc. to start up the application.
 2. Tap [SRS-XV900].
 3. Tap [Settings] - [Sound] - [Adjust synchronization with TV audio], and then select the optimal delay adjustment time length.
- Refer to the instruction manual supplied with your TV to find out if the TV has the delay setting function. If it does, adjust the setting value to the adequate one.
- Audio effects of the TV Sound Booster function may be affected by the placement of the speaker and TV. If audio sounds duplicated, move the speaker as close as possible to the TV.
- Adjust the sound volume of the speaker with “Sony | Music Center.”
- As the amount of audio delay caused by the TV Sound Booster function depends on the performance of TVs, it is not guaranteed that the TV Sound Booster function works for every TV.

Wireless Speaker
SRS-XV900

The sound volume is low

- Check the TV for sound volume. While the TV Sound Booster function is activated, the combined audio from the TV and the speaker is used for content playback. Adjust the sound volume independently on the TV and the speaker.
- Check the speaker for sound volume. While the TV Sound Booster function is activated, the speaker outputs only the bass and high-pitched sounds for content playback. Use “Sony | Music Center” to adjust the sound volume of the speaker in accordance with the TV sound volume.
- While the TV Sound Booster function is activated, the speaker is capable of only outputting audio from the connected TV. For music playback while no TV is connected, deactivate the TV Sound Booster function.

Wireless Speaker
SRS-XV900

Neither the Karaoke function nor the DJ Control function are available for use while the TV Sound Booster function is activated

- While the TV Sound Booster function is activated, microphone/guitar input, the DJ Control function, and the Sampler function are disabled. To use any of them, deactivate the TV Sound Booster function.

Wireless Speaker
SRS-XV900

The USB device is not detected; playback with an audio source fails; no sound comes out of the speaker; playback does not start with the first track

- Make sure that the speaker is in USB mode.
- Turn off the speaker, disconnect and reconnect the USB device, and then turn the speaker back on.
- The connected USB device is not compatible with the speaker. Check on the information about the compatible devices.
- Check the USB device for the file format. The speaker does not support USB devices formatted with any file system other than FAT16 or FAT32.*
 - * While the speaker supports the FAT16 and FAT32 file systems, some USB devices may not support these FAT file systems. For details, refer to the operating instructions provided with your USB device or contact its manufacturer.
- Use “Sony | Music Center” to resume normal playback mode.
- When the connected USB device has partitioned storage space, the speaker is only capable of playing the audio files stored in the first partition.
- The speaker is not capable of playing any encrypted or password-protected files.
- The speaker is not capable of playing any files protected with the DRM (Digital Rights Management) technology.
- When the connected USB device does not work correctly, refer to the operating instructions provided with your USB device.

Related Topic

- [Connecting with a USB device](#)
- [Listening to music of a USB device](#)

Wireless Speaker
SRS-XV900

The sound from the speaker contains noise, skips, or is distorted

- The connected USB device is not compatible with the speaker. Check on the information about the compatible devices.
 - Turn off the speaker, disconnect and reconnect the USB device, and then turn the speaker back on.
 - Make sure that the audio file itself does not contain noise or distortion. Noise may be generated while an audio file is encoded. If this is the case, delete the audio file and encode the original audio file all over again. If the sound from the speaker contains noise or is distorted always at the same point in playback, this suggests that the file itself has a problem.
 - The bit rate setting for creating or encoding audio files is low. Increase the bit rate and encode the original audio file on the USB device.
-
-

Related Topic

- [Connecting with a USB device](#)

Wireless Speaker
SRS-XV900





It takes a long time before playback starts

In the event of the following, it may take some time for the speaker to load audio data.

- The USB device has many folders or files.
- The USB device has a highly complicated structure.
- The USB device has a memory capacity that is too large for the speaker to handle.
- The internal memory of the USB device is fragmented.

Wireless Speaker
SRS-XV900

Unable to pair the speaker with a BLUETOOTH device

- Place the speaker and the BLUETOOTH device within 1 m (3.2 ft) of each other.
- For Apple iOS devices, the speaker is compatible with iOS 10.0 or later. A BLUETOOTH connection is not available on the devices with iOS 9.x or earlier.
- To use the Stereo Pair function or Party Connect function, pair with the speaker in which the  (BLUETOOTH) indicator flashes in blue.
- If the  (BLUETOOTH) indicator is not double flashing in blue, touch and hold  (BLUETOOTH) on the speaker. You hear voice guidance (BLUETOOTH pairing) and the  (BLUETOOTH) indicator starts double flashing (pairing mode).
- Once the speaker is initialized, an iPhone may not be able to connect to the speaker. In this case, delete pairing information on the iPhone, then pair them again.
- Check that the BLUETOOTH device is turned on and the BLUETOOTH function is activated on the device.
- If the speaker is not displayed on the BLUETOOTH device, turn off the device, and then turn on the device again. It may improve symptoms.
- Depending on the specifications of the TV, no BLUETOOTH connection may be established between the speaker and the TV even though the TV has the BLUETOOTH function.

Related Topic

- [Pairing and connecting with BLUETOOTH® devices](#)
- [About the indicators](#)
- [Initializing the speaker](#)

Wireless Speaker
SRS-XV900

Speaker output is interrupted

While the “Priority on Sound Quality” preference is selected for the BLUETOOTH connection quality, signal reception on the speaker may fluctuate depending on the combination of the setup on your BLUETOOTH device and the ambient conditions. In such a case, the following may help for solving the issue.

- Move the speaker away from a device such as a microwave oven and a wireless LAN access point.
 - There are some BLUETOOTH devices that can have the BLUETOOTH connection quality changed. If your device is compatible with this function, select “Priority on Stable Connection (SBC)” for the BLUETOOTH connection quality. For details, refer to the operating instructions supplied with the device.
 - Select “Priority on Stable Connection (SBC)” for the BLUETOOTH connection quality of the speaker.
-

Related Topic

- [Selecting the quality for music playback via BLUETOOTH connection \(Codec\)](#)

Wireless Speaker
SRS-XV900

Unable to connect a BLUETOOTH device with the speaker for the Stereo Pair function

- Update the pre-installed software to the latest version on each and every speaker to connect for the function. (For details about the update procedure, see [Updating the pre-installed software.](#))
 - Update “Sony | Music Center” to the latest version before setting up the Stereo Pair function. For details about “Sony | Music Center,” refer to the following URL: <https://www.sony.net/smcqa/>
 - Make sure that the 2 speakers to connect for the function are located within 1 m (3.2 ft) from each other.
 - While music playback is in progress, stop the playback before setting up the Stereo Pair function.
-

Related Topic

- [Listening to music wirelessly with 2 speakers \(Stereo Pair function\)](#)
- [What you can do with “Sony | Music Center”](#)
- [Updating the pre-installed software](#)

Wireless Speaker
SRS-XV900

Unable to connect with a speaker for the Party Connect function

- Check if the device is compatible with the Party Connect function. Devices compatible with the Wireless Party Chain function are not applicable for connection.
 - Update the pre-installed software to the latest version on each and every speaker to connect for the function. (For details about the update procedure, see [Updating the pre-installed software](#).)
 - Update “Sony | Music Center” to the latest version before setting up the Party Connect function. For details about “Sony | Music Center,” refer to the following URL:
<https://www.sony.net/smcqa/>
 - Make sure that all of the speakers to connect for the function are located within 1 m (3.2 ft).
 - While music playback is in progress, stop the playback before setting up the Party Connect function.
-

Related Topic

- [Enjoying wireless playback using multiple speakers \(Party Connect function\)](#)
- [What you can do with “Sony | Music Center”](#)
- [Updating the pre-installed software](#)

Wireless Speaker
SRS-XV900

Unable to add a speaker for the Party Connect function

- To any group set up with “Sony | Music Center,” use “Sony | Music Center” to add a new speaker.
For details about “Sony | Music Center,” refer to the following URL:
<https://www.sony.net/smcqa/>
 - While music playback is in progress, stop the playback before setting up the Party Connect function.
-

Related Topic

- [Enjoying wireless playback using multiple speakers \(Party Connect function\)](#)

Wireless Speaker
SRS-XV900

Unable to connect the speaker concurrently with 2 devices (multipoint connection)

- When using the Stereo Pair function or the Party Connect function, you cannot use the multipoint connection capability.
 - Depending on the BLUETOOTH device, you may not be able to use the multipoint connection capability.
-

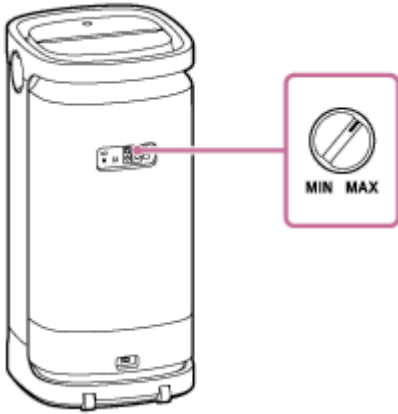
Related Topic

- [Connecting the speaker concurrently with 2 BLUETOOTH devices \(multipoint connection\)](#)

Wireless Speaker
SRS-XV900

There is no microphone sound

- Turn the MIC level knob or the MIC and GUITAR level knob to adjust the microphone volume.



- Make sure that the microphone is turned on.

Wireless Speaker
SRS-XV900


There is acoustic feedback

- Reduce the volume.
- Move the microphone and guitar away from the speaker or change the direction of the microphone.

5-042-061-11(1) Copyright 2022 Sony Corporation

Wireless Speaker
SRS-XV900

Restarting the speaker

In the event of the following, among others, press and hold the  (power) button for about 8 seconds to restart the speaker.

- You cannot operate the speaker after you turn it on.
- You cannot operate the speaker after you troubleshoot pairing issues.

etc.

The speaker is turned off during the restart process, and then turned back on upon completion of the process.



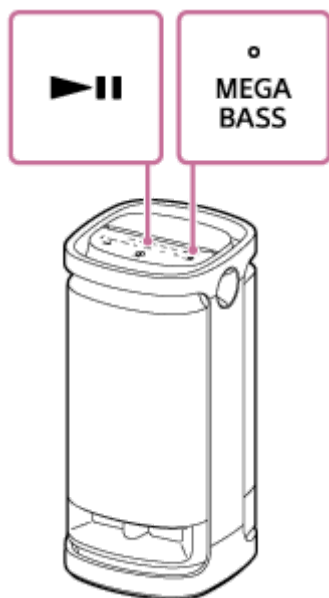
Note

- Restarting the speaker does not delete its pairing information. The pairing information, however, is stored on the speaker when the speaker is turned off. After pairing the speaker with a new device, turn off the speaker and turn it back on, and then restart the speaker.
- Restarting the speaker may change its volume, function, or sound settings.

Wireless Speaker
SRS-XV900

Initializing the speaker

If the speaker fails to operate successfully after you restart it, initialize the speaker to resume its default settings. While the speaker is turned on, touch and hold **▶||** (play) and MEGA BASS on the speaker until the speaker turns off (5 seconds or more).



The speaker is initialized. Settings such as volume, etc., are restored to the default settings, and all pairing information is deleted.

Note

- The speaker cannot be initialized while the power is off.

Related Topic

- [Pairing and connecting with BLUETOOTH® devices](#)
- [Restarting the speaker](#)